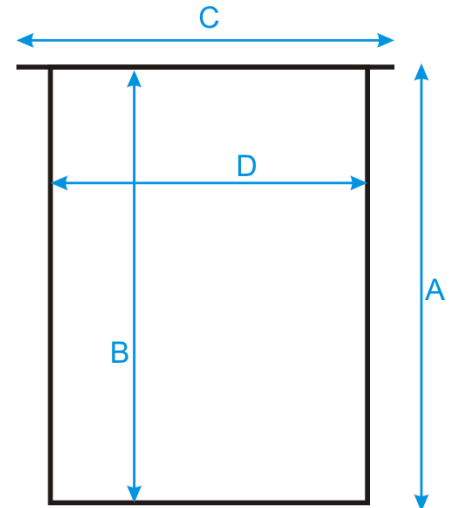


**1. Part Number:** A434-2

**2. Photograph:**



A = 175 mm  
B = 170 mm  
C = 160 mm  
D = 130 mm

### 3. Product Information:

Description:	Mini-Drum 2L
Method of Construction:	Body welds ground and polished Patch plates for swing handle and lid handle are spot welded
Material of Construction:	304 Stainless Steel
Nominal Volume:	2L
Nominal Weight:	750g (body & lid)
Surface Finish:	Bright Polish (Ra < 0.5 microns)
Recommended Storage Conditions:	Dry and ambient temperature

### 4. Approval:

Signed:



Name: Kuldeep Flora  
Position: Quality Manager  
Date: 20-Nov-20