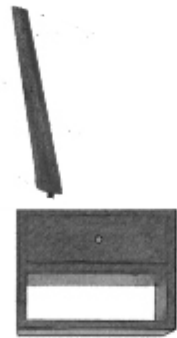


# ASSEMBLY INSTRUCTIONS

ITEM CODE : IN 1689

ITEM DESCRIPTION : **BEDSIDE WITH BRICK RED DRAWER FRONTS**



**1**

Reverse the Bedside top & place the leg as shown & align the leg to match the apron.



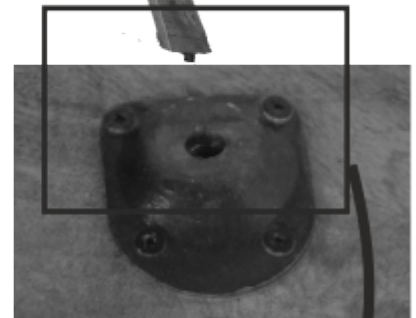
**2**

Twist the leg into the iron fitting slot by rotating it.



**3**

Fix the other legs in the similar way



**4**

Reverse the Bedside straight. Now your Bedside is ready for use

