

Sample Received: 10/8/2020 Report Date: 10/10/2020 Report: Interim-12007

SUVER HAZE

Potency Analysis Report

Sample: **74403H-P** PLANTS

Item Notes:

CANNABINOID LEVELS

	%	mg/gram
THC	N/D	N/D
THC-A	0.91	9.10
CBD	< LLOQ	< LLOQ
CBD-A	22.78	227.85
CBN	N/D	N/D
CBG	N/D	N/D
CBG-A	0.82	8.21
CBC	N/D	N/D
THCV	N/D	N/D
Total	24.52	245.16

ADDITIONAL INFORMATION

**THC Conversion 0.00%

**CBD Conversion 0.00%

***Total THC** is calculated using the equation $THC + (THC-A \cdot 0.877)$. This accounts for the weight lost by THC-A when it is decarboxylated to become active THC. An equivalent formula is used to determine Total CBD.

****THC/CBD Conversion** indicates the percentage of total cannabinoid that was already converted to active cannabinoid at the time of testing. 100% indicates that all cannabinoid present was in the active, decarboxylated form at the time of testing.

N/D = Not Detected. The level of analyte was below the detection threshold for this test.

LLOQ = Lower Limit of Quantitation. <LLOQ signifies that the analyte was detected at a concentration below the calibrated range of the method and could not be accurately measured.

METRC No. 1A4000D00037D5D000000591

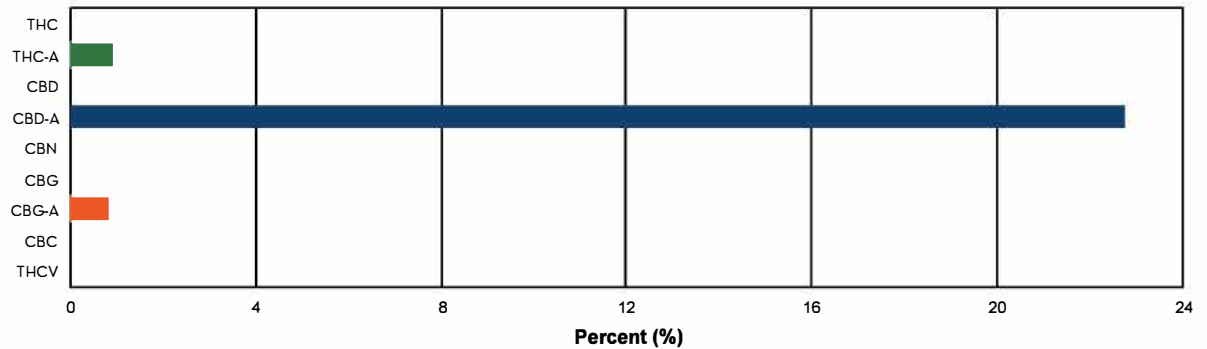
Batch:

TOTAL THC*: 0.80 %

THC + THC-A*: % by weight

TOTAL CBD*: 19.99 %

CBD + CBD-A*: % by weight



Authorized by: Roy Turton, Lab Director

Page 32 of 35

ISO/IEC 17025:2017

