

## DIRECTIONS FOR USE

SITUATION	PESTS	RATE	CRITICAL COMMENTS
Warehouses, Factories, Kitchens, Industrial buildings, Domestic residences	Mosquitoes, biting midges, flies, cockroaches (adults only)	20 to 30 mL per 1000 m <sup>3</sup> applied in a suitable oil-based diluent or water.	Using thermal fogging or cold aerosol generating ULV equipment or hand held knapsack sprayer, spray into the air or onto surfaces used as harboursages by the target pests.
Outdoor areas including refuse tips, picnic areas, sports grounds, recreation areas, reserves, vector control and biting midge programs.		200 to 300 mL/ha applied neat or in a suitable oil-based diluent or water.	For best results apply when pests are active. Use the higher rate when environmental conditions are suboptimal, such as low humidity, high temperature, lack of breeze or dense vegetation. <b>Midges</b> - for effective control, DIPHOTHOR DUO must be mixed with a suitable oil based diluent such as DC Tron and not applied neat. Repeat when necessary as determined by management practices and environmental conditions.

**NOT TO BE USED FOR ANY PURPOSE, OR IN ANY MANNER, CONTRARY TO THIS LABEL UNLESS AUTHORISED UNDER APPROPRIATE LEGISLATION.  
WITHHOLDING PERIOD: NOT REQUIRED WHEN USED AS DIRECTED.  
DO NOT SPRAY OVER WATER INTENDED FOR HUMAN CONSUMPTION**

## GENERAL INSTRUCTIONS MIXING

Dilute DIPHOTHOR DUO Insecticide with a suitable volume of oil (e.g. DC Tron), kerosene or water according to the equipment manufacturer's recommendations for the output rates required. Do not store diluted insecticide. Prepare fresh spray as required.

## APPLICATION

Diluted DIPHOTHOR DUO Insecticide should be applied uniformly using calibrated conventional ground-based or hand application equipment. These include thermal fogging equipment, cold aerosol generating ULV equipment, hand-held or knapsack sprayers. Applications should be in response to high target insect numbers, disease risk and pro-active pesticide management.

## Insecticide Resistance Warning

**GROUP 3A INSECTICIDE**

For insecticide resistance management DIPHOTHOR DUO Insecticide is a Group 3A insecticide. Some naturally-occurring insect biotypes resistant to DIPHOTHOR DUO Insecticide and other Group 3A insecticides may exist through normal genetic variability in any insect population. The resistant individuals can eventually dominate the insect population if DIPHOTHOR DUO Insecticide or other Group 3A insecticides are used repeatedly. The effectiveness of DIPHOTHOR DUO Insecticide on resistant individuals could be significantly reduced. Since occurrence of resistant individuals is difficult to detect prior to use, Ensystem Australasia Pty Ltd accepts no liability for any losses that may result from the failure of DIPHOTHOR DUO Insecticide to control resistant insects.

DIPHOTHOR DUO Insecticide may be subject to specific resistance management strategies. For further information contact Ensystem Australasia Pty Ltd or your local agricultural department agronomist.

Contents:  
**1 Litre**

ENSYSTEX AUSTRALASIA PTY LTD  
ABN 53 102 221 965

Warehouse D, Building 6, The Switchyard  
161 Manchester Road Auburn NSW 2144

[www.Ensystem.com.au](http://www.Ensystem.com.au)

**CUSTOMER SERVICE AND  
EMERGENCY RESPONSE  
(ALL HOURS) 13 35 36**

® Registered trademarks of  
Ensystem, Inc. used by licence to  
Ensystem Australasia Pty Ltd.

APVMA Approval No:  
61559/0609

## CAUTION

KEEP OUT OF REACH OF CHILDREN  
READ SAFETY DIRECTIONS BEFORE OPENING OR USING

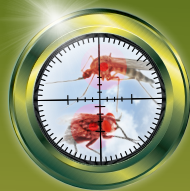
# DIPHOTHOR<sup>®</sup> DUO INSECTICIDE

ACTIVE CONSTITUENT:  
25 g/L CYPERMETHRIN

SOLVENT:  
741 g/L LIQUID HYDROCARBON

**GROUP 3A INSECTICIDE**

**For the knockdown control of adult mosquitoes, biting midges, flies and cockroaches in and around domestic, public service areas, agricultural buildings, commercial and industrial areas, refuse tips and breeding areas, as per the directions for use table.**



## PRECAUTIONS

Do not allow spray to contact food, food preparation surfaces or utensils. Do not spray directly on humans, exposed food or food utensils. Never repack from this container.

## RE-ENTRY PERIOD

DO NOT allow entry into area where chemical fog is still present. When prior entry is necessary, wear cotton overalls (or equivalent clothing), a washable hat, elbow length PVC gloves and respirator. Clothing must be washed after each day's use. In enclosed buildings, wait until chemical fog clears after treatment, then thoroughly ventilate treated area. Clean thoroughly before food processing/serving resumes.

## PROTECTION OF WILDLIFE, FISH, CRUSTACEANS AND ENVIRONMENT:

Dangerous to fish and aquatic invertebrates. Do not use over or immediately next to any water body or water course. DO NOT contaminate streams, rivers or waterways with the chemical or used containers. Remove or cover fish tanks and ponds before use.

## PROTECTION OF LIVESTOCK

Dangerous to bees. DO NOT spray any plants in flower while bees are foraging. Spray in the night or early morning when bees are not actively foraging.

## STORAGE AND DISPOSAL:

Store in the closed, original container, in a cool well-ventilated area away from children, animals, food and feedstuffs. Do not store for prolonged periods in direct sunlight. In case of spillage, confine and absorb spilled product with absorbent material such as sand, clay or cat litter and dispose of waste as indicated below or according to Australian Standard 2507 for Storage and Handling of Pesticides. DO NOT allow spilled product to enter sewers, drains, creeks or any other waterways.

Triple or preferably pressure rinse containers before disposal. Add rinsings to spray tank. Do not dispose of undiluted chemicals on site. If recycling, replace cap and return clean containers to recycler or designated collection point. If not recycling, break, crush or puncture and bury empty containers in a local authority landfill. If no landfill is available, bury the containers below 500 mm in a disposal pit

specifically marked and set up for this purpose clear of waterways, desirable vegetation and tree roots. Empty containers and product should not be burnt.

## SAFETY DIRECTIONS

Harmful if inhaled. May irritate the eyes and skin. Facial skin contact may cause temporary facial numbness. Sensitive workers should use protective clothing. Do not inhale spray mist. Avoid contact with eyes and skin. When using the product wear cotton overalls buttoned to the neck and wrist, washable hat, elbow-length PVC gloves and face shield or goggles and half facepiece respirator. If product in eyes, wash it out immediately with water. Wash hands after use. After each day's use, wash gloves, respirator and if rubber wash with detergent and warm water, face shield or goggles and contaminated clothing.

## FIRST AID:

If poisoning occurs, contact a doctor or Poisons Information Centre.  
Phone Australia 13 11 26.

## SDS:

Additional information is listed in the Safety Data Sheet.

## NOTICE:

Ensystem Australasia Pty Ltd (Ensystem) warrants that this product conforms to its chemical description and is reasonably fit for the purposes stated on the label when used in accordance with Directions for Use under normal conditions of use. No warranty of merchantability or fitness for a particular purpose, express or implied, extends to the use of the product contrary to label instructions or under offlabel permits not endorsed by Ensystem, or under abnormal conditions.

Batch Number:

Date of Manufacture:

ENSYSTEX<sup>®</sup>

ENSYSTEX<sup>®</sup>

L-AU-CHEDI1010 1.04 05.23 R