

ENTRAP™

– NATURAL INSECTICIDE –



NATURAL & POISON-FREE
Kills by Physical Mode of Action



DERIVED FROM PLANTS
Only Uses Ingredients Approved
for Use in Food



BROAD SPECTRUM
All Crawling & Flying Insects



FAST KNOCKDOWN
Rapid Kill by Immobilising Insects



PROTECT YOUR PROFITS WITH POISON-FREE CONTROL OF POULTRY PESTS INCLUDING LITTER BEETLES REDUCES STRESS IN YOUR BIRDS AND IMPROVES WELFARE



- ◎ **SUPER FAST KNOWDOWN OF MITES & OTHER PESTS**
- ◎ **DUST PENETRATING FORMULATION**
- ◎ **EFFECTIVE ON SPECIES RESISTANT TO CHEMICAL INSECTICIDES**
- ◎ **FOOD-GRADE ACTIVE NATURALLY DERIVED FROM PINE TREES**
- ◎ **POISON-FREE FORMULATION**
- ◎ **IMMOBILISES PESTS**

ECOTHOR ENTRAP improves overall poultry health and welfare by reducing stress caused by ectoparasites, and is recommended for use in all housing systems. ECOTHOR ENTRAP has a purely physical mode of action (external immobilisation) and contains NO neurotoxic constituents. Every component of the formulation is food-grade.

ECOTHOR ENTRAP contains a food-grade cellulose polymer (derived from pine trees) to trap and swiftly immobilise a wide range of insects and arachnids. It works just like a sprayable spider's web, to encase and rapidly immobilise the pests with the death/killing effect arising from the pest being immobilised. Since it has a purely physical mode of action, it is highly effective against mites resistant to chemical insecticides.

ECOTHOR ENTRAP is a patented formulation that has been optimised to penetrate the dusty layers typically found within poultry houses and grain stores to spread deep into the cracks and crevices that harbour mites and other insect pests.

Due to ENTRAP's physical mode of action, it offers fast control of mites and stops them in their tracks. This means birds are mite-free up to 48 hours faster than with some alternative chemical controls.



LITTER BEETLES



MITES

BIRD WELFARE IS KEY IN ACHIEVING GOOD PROFITS



THE USE OF ECOTHOR ENTRAP TO GAIN EFFECTIVE CONTROL OF POULTRY PESTS PROVIDES A HUGE AMOUNT OF BENEFITS, INCLUDING; REDUCED STRESS, IMPROVED HEALTH, IMPROVED MEAT AND EGG QUALITY AND IMPROVED PRODUCTIVITY.

Poultry pests can cause various problems that lead to reduced growth rates of poultry and lower production levels of eggs. Poultry pests can also lead to lesions in meat, poor egg shell integrity and egg spotting.

Due to ECOTHOR ENTRAP's physical mode of action, it offers fast control of mites and other pests, stopping them in their tracks. This means birds are mite-free up to 48 hours faster than with some alternative chemical controls. ECOTHOR ENTRAP does not need certification for application or a vet prescription.

REDUCED STRESS

- > Stops mites in their tracks
- > Less skin irritation due to reduced biting
- > No removal of birds required


IMPROVED HEALTH

- > Poultry red mite carry *Salmonella*, *E. coli*, *Listeria*
- > Reduced spread of poultry related pathogens



KEY BENEFITS: ECOTHOR ENTRAP, THE NATURAL INSECTICIDE...



 **HEALTHIER FLOCK**



 **BETTER QUALITY MEAT & EGGS**



 **PROTECTED PROFITS**

ENTRAP is made from the same **plant-derived cellulose polymer** that is used to coat **pharmaceutical capsules**, as well as in the **food industry** as a filler in processed foods.



EASE OF USE

> Can be used at any stage in the flock cycle – after clean down, before restocking or to treat first signs of infestation in flocks.

IMPROVED MEAT QUALITY

- > Reduced lesions in meat
- > Aids live weight gain

IMPROVED PRODUCTIVITY

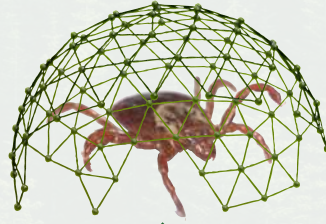
- > Improved egg and meat production levels
- > Higher marketable yields

IMPROVED EGG QUALITY

- > Reduced shell thinning
- > Reduced egg spotting

HOW DOES IT WORK?

Death arises from the insect having been immobilised, just as if it were caught in a spider web.



1

SPRAY ONTO PESTS OR INTO CREVICES WHERE THEY HIDE

2

WATCH THEM STOP IN THEIR TRACKS!

3

INSECTS ARE ENCAPSULATED AS THE WEB COATING HARDENS

- > Ideal product for producers concerned about pesticide contamination
- > Can be used at any stage in the flock cycle - after clean down, before restocking or to treat first signs of infestation in flocks
- > Does not act systemically
- > Can be applied in the presence of birds (*diluted spray*)

**100%
POISON
FREE**



**Certified
Allowed
Input**

ACO CERT. NO. 11839

Approved for poultry farms which require an **ORGANIC INPUT PRODUCT** and who care about the environment.

RESISTANCE MANAGEMENT

ECOTHOR ENTRAP gives you versatility because it can be used at any stage in the flock cycle after clean-down, before restocking or to treat the first signs of infestation in flocks. ECOTHOR ENTRAP can be used either as a stand-alone treatment or in sequence with conventional insecticides. ECOTHOR ENTRAP is highly effective against mites and insects that are resistant to chemical insecticides.

With no residual effect, ECOTHOR ENTRAP is the ideal product for egg producers concerned about pesticide contamination. ECOTHOR ENTRAP can also be used as a pre-treatment when planning to introduce integrated control strategies such as biological control programmes based on predatory mites.



BROAD SPECTRUM CONTROL

ECOTHOR ENTRAP immobilises infestations of litter beetles including lesser meal worm (*Alphitobius diaperinus*), poultry red mites (*Dermanyssus gallinae*), rat mite (*Ornithonyssus bacoti*), scaly leg mite (*Knemidokoptes mutans*), temperate poultry mite (*Ornithonyssus sylviarum*), and other pests in poultry farming.



– DIRECTION FOR USE –

	POULTRY HOUSES	GRAIN STORES
BEFORE SPRAYING	Ensure all chicken eggs are removed before spraying ECOTHOR ENTRAP. To improve spray contact with mites, where practical remove belt covers, shrouds etc. to expose mite harbourage areas.	Before spraying ECOTHOR ENTRAP, thoroughly clean the empty store using an industrial vacuum. Remove as much dust and debris from ducts, conveyors, and other potential areas of mite infestations.
RATE OF USE	ECOTHOR ENTRAP is a concentrate and therefore needs to be diluted in the ratio of 1 part ECOTHOR ENTRAP to 7.5 parts of clean water.	
PREPARING THE SPRAYER & SPRAY SOLUTION	Wash out sprayer with water and detergent before use. Half fill the sprayer with water, add the required amount of ECOTHOR ENTRAP and make up to the final volume with water. Close the sprayer and ensure contents are thoroughly mixed before use. Shake or re-agitate sprayer before use if spraying is interrupted.	
APPLICATION	Pressurise spray vessel and apply spray as a coarse, low pressure spray directed over clusters of mites and crevices/dusty sections where pests hide or live. Application should be applied to runoff. Absorbent surfaces require higher rates. ECOTHOR ENTRAP should not be sprayed directly onto hens.	Pressurise spray vessel and apply spray as a coarse, low pressure spray onto the fabric of empty grain stores. Ensure good coverage of conveyors, ducts and other potential areas of mite harbourage. Surfaces should appear wet just after application. ECOTHOR ENTRAP should not be applied directly onto the grain.
COVERAGE	8.5 litres of dilute solution will treat approximately 200 m ²	
NOTES	It is recommended to re-apply ECOTHOR ENTRAP to flare up areas as needed and re-apply 6 - 8 weeks later, or when pests reappear.	If beetle or weevil species are the major pest we recommend the use of a surface residual spray.

Ensystem New Zealand Ltd
17C Corinthian Drive Albany Auckland 0752
www.Ensystem.co.nz
CUSTOMER SERVICE: 0800 ENSYSTEM (0800 367 978)

Approved pursuant to the HSNO Act 1996.
 Approval Code HSR101510
 MPI Approved Type A (All animal product except dairy)
 © TM Trademarks of Ensystem, Inc. used by licence to Ensystem New Zealand Ltd.
 BROET1001 1.01 02.22