

World Class Innovation & Product Discovery



Product Guide
2024/2025

ENSYSTEX[®]
THE INNOVATORS

Who We Are



Ensystem is a global, research-based company focused on providing environmentally responsible, effective, urban pest management solutions and has achieved a high international reputation for these products.

Our commitment to the pest management industry is displayed through the team of dedicated professionals employed in Australia and New Zealand. Ensystem now has the largest technical sales support team of any innovation based company in Australia. We are here to assist you should problems ever arise. Ensystem has specialists in New Zealand and all states of Australia, and you also have the support of our Australian laboratory complex for soil testing, chemical analysis, etc.

Ensystem develops and owns all its own formulations, performs QA and batch analysis checks on all batches of chemicals and guarantees the consistent quality of all materials sold. Ensystem is a true specialist in professional pest management for the urban and public health environment.

You Call - We Jump!

We're all aware that working in today's tough, demanding, fast forward environment, when a problem comes up, it can make life very difficult. That's why Ensystem has a strong "help" line, dedicated to our valued clients.

If you have any technical questions or require technical support all you have to do is call **13 35 36** and follow any prompts. We then guarantee that one of our technical support specialists will call you back within 2 hours of your call being placed to assist with the matter.

This support is available 24 hours a day, 365 days a year!



Your On Time Delivery Guarantee...



Ensystem makes this commitment to you:

Ensystem delivers your products, door to door, using leading courier services to optimise prompt receipt of goods.

AUSTRALIA: If you place your order before 2-00 pm AEST, or for pallet orders, before 12-00 pm AEST, your order will leave the same day. If you place your order after these times, your order will leave the next day.

NEW ZEALAND: If you place your order before 12-00 pm NZST your order will leave the same day. If you place your order after this, your order will leave the next day.

Your Ensystem Guarantees



- ✓ **MONEY-BACK GUARANTEE :** If any Ensystem product fails to meet or exceed your expectations, return the unused portion in the container, at our expense, and we will issue you with a full refund.
- ✓ **SOLUTION GUARANTEE :** If you have a challenging situation, Ensystem guarantees to assist you with the matter and, where required, send one of our trained technical support specialists to visit the site with you.
- ✓ **PREMIUM PRODUCT GUARANTEE :** Ensystem always uses the highest quality materials to ensure optimal efficacy and safety. SDS to international standards are available for all Ensystem products and, where relevant, AQIS Approval Certificates for product use in Export Meat Production Facilities. We can also provide Certificates for compliance to HACCP.



Ensystem Formulations



Ensystem is a world leader in bait technologies and the development of aqueous (water-based) suspension concentrates. Ensystem guarantees all formulations are the best-of-the-best.



Order all your product needs online.

www.Ensystem.com.au

www.Ensystem.co.nz

Contents

INSECTICIDES 5

AEROTHOR.....	6
ATTRATHOR.....	7
BITHOR.....	8
BLATTATHOR ULTRA.....	9
ACCUTHOR GEL GUN.....	9
CULITHOR.....	10
CYPERTHOR.....	11
DELTATHOR.....	12
DIPHTHOR DUO.....	13
FUMITHOR DELTA.....	14
HYMENOPTHOR ULTRA.....	15
MAXXTHOR.....	16
MAXXTHOR SAND GRANULE.....	17
MAXXTHOR TURBO.....	18
PERMETHOR DUST.....	19
PROTHOR.....	20
ULTRATHOR X.....	21
VECTOTHOR IN2CARE.....	22
ZENITHOR GEL COCKROACH BAIT.....	23

FUMIGANTS 24

ZYTHOR GAS.....	25
-----------------	----

ECOTHOR ACTIVE NATURE 26

ENTRAP.....	27
FLY-FREE TRAP.....	28
INSECT TRAP - DISPOSABLE 3-IN-1.....	29
INSECT MONITOR.....	30
NATURAL SNAIL & SLUG KILLER.....	31

INVASIVE PEST SOLUTIONS 32

APITHOR HIVE BEETLE HARBOURAGE.....	33
HOPSTOP - FOR CANE TOADS.....	34

EXTERRA TERMITE BAITING 35

EXTERRA.....	36
EXTERRA EVER-READY.....	37

PRE-CONSTRUCTION PROTECTION 38

TRITHOR TERMITE PROTECTION.....	39
NOVITHOR- PESTICIDE FREE.....	40

HYGIENE TREATMENT 41

FUMITHOR HYGIENE.....	42
-----------------------	----

AVITHOR BIRD CONTROL 43

AVITHOR FLOCK OFF.....	44
AVITHOR BIRD AWAY.....	45
AVITHOR NET.....	46
AVITHOR DADDI LONG LEGS.....	46
AVITHOR E-TRACK.....	47
AVITHOR EAGLE EYE & PRO-PELLER.....	48
AVITHOR E4 DETERRENT SPIKES.....	49
AVITHOR GUANAWAY.....	50

RODENTHOR RODENT CONTROL 51

RODENTHOR DIGITAL.....	52
GORILLA RODENT TRAPS & NARA LURES.....	53
NARA SPRAY.....	54
MUSKIL DUAL ACTIVE BLOCKS.....	55
MUSKIL SOFT BAIT.....	56
RODENTHOR BLOCK.....	57
RODENTHOR SOFT BAIT.....	58
RODENTHOR GEL.....	59
RODENTHOR RAT & MOUSE STATIONS.....	60

VECTOTHOR FLYING INSECT CONTROL LIGHT TRAPS 63

LED RANGE.....	64
VECTOTHOR LED OMNIVEO.....	65
VECTOTHOR OSPREY LED.....	66
VECTOTHOR FALCON LED.....	66
VECTOTHOR PEREGRINE ³ LED.....	67
VECTOTHOR BUZZARD LED.....	67
HARRIER NOVA LED.....	68
TRADITIONAL FLUORESCENT LIGHT TRAPS.....	69
FALCON.....	70
OSPREY.....	70
SEA EAGLE 150 EX.....	71
CONDOR 40 HT.....	71
BUZZARD.....	72
PEREGRINE ³	72
HARRIER NOVA.....	73
BLUETOOTH UV-TESTER.....	73

EQUIPMENT 74

DUAL POWERLIGHT.....	74
URBAN POWERLIGHT.....	75

Insecticides



AEROTHOR™

Extra Strength Crawling Insect Spray

Extra strength, super fast kill aerosol spray.

Key Features

- ◆ **Superfast knockdown of cockroaches;** Quite Simply, nothing is faster than AEROTHOR in terms of speed of performance for flushing and killing cockroaches. In fact AEROTHOR will knockdown cockroaches in just a few seconds!
- ◆ **Extra Strength;** To give you the performance you expect as a professional pest manager.
- ◆ **Two Way Nozzle;** This specialised aerosol stainless steel extension nozzle allows you to spray a powerful blast covering a larger area; or alternatively, flip the targeted stainless steel straw application nozzle into place for accurate treatment into cracks and crevices.
- ◆ **Labelled for the control of ALL Crawling Insects;** So you can use it against all common pest species.
- ◆ **Two Pyrethroid Actives;** AEROTHOR contains two actives. Imiprothrin provides super-fast knockdown and kill of crawling pests while the cypermethrin provides long-lasting residual performance.
- ◆ **Will not harm plants;** Safe to use around plants or garden areas.
- ◆ **Low toxic;** So you can use AEROTHOR in schools, kitchens, hospitals, domestic residences, offices, etc.
- ◆ **Low odour;** Newly formulated to make it more pleasant in use.

Directions for Use

Shake can well before using. Keep can as upright as possible and hold about 15-20 cm from the surface. Avoid using on plastic surfaces. Treating surface with AEROTHOR Extra Strength Crawling Insect Spray will kill and protect against a large range of crawling insects. For direct kill, spray in the direction of the crawling insect.



SCAN QR OR
CLICK HERE



Product Details

Active Ingredients:	2 g/kg cypermethrin, 1.4 g/kg imiprothrin
Insecticide Group:	Pyrethroid
Formulation Type:	Aerosol
Pests Controlled:	Crawling insects including bed bugs, cockroaches, silverfish, ants, carpet beetles, fleas, spiders, millipedes and clothes moths
Pack Size / Code:	350 g can (CHEAX1006.004) 12 x 350 g cans (CHEAX1006.003)
Resistance Group:	3A

ATTRATHOR™

Targeted Insecticide

A world first LIQUID BAIT with advanced micro-encapsulated attractant combined with micro-encapsulated FIPRONIL, the active you know and trust.

Key Features

- **Quick-release Insect Attractant Micro-capsules™;** Tiny, 2 µm, solid-core capsules which contain the cockroach food attractant are in a matrix within a polymer shell. These tiny Micro-capsules have a large surface area relative to their volume, which allows for the quick-release of the attractant. The attractant diffuses out through the polymer shell, quickly luring the cockroaches to the ATTRATHOR Target Zone™.
- **Controlled-release Active Micro-capsules™;** Larger, 35 – 55 µm, liquid-core capsules contain the active fipronil. These capsules have a finer polymer shell and, trapped within the liquid fipronil core, are tiny bubbles of CO². These pressurise the capsules, ensuring that when the insect makes contact with them, the capsules burst open, releasing the deadly fipronil within. These Micro-capsules control the release of the fipronil to ensure maximum residual performance. The larger size also ensures improved performance on porous surfaces.
- **Quick Elimination;** Within 48 hours there will be a significant reduction in pest numbers.
- **Attractive Betrayal;** Insects are lured to the ATTRATHOR Target Zone™ by the Quick-release Insect Attractant Micro-capsules™ where they unknowingly pick up the deadly Controlled-release Active Micro-capsules.
- **Easy Application;** Through traditional spray equipment targeted into cockroach harbourages. ATTRATHOR can partner, or replace gel bait technology.
- **Kills More Cockroaches;** Cockroaches passing over the film pick-up the Active Micro-capsules, loaded with fipronil. When they later socialise, they unknowingly pass the toxicant on. This creates the Viral Transfer Effect™ leading to the kill of more cockroaches.

Performance

ATTRATHOR is unique since it provides both active and passive control of cockroaches.

ACTIVE CONTROL is achieved when the Quick-release Insect Attractant Micro-capsules™ lure the cockroaches to the ATTRATHOR Target Zone™ where they break the Controlled-release Active Micro-capsules™ containing the deadly fipronil. Due to fipronil's non-repellent chemistry, with its presence



SCAN QR OR
CLICK HERE



further concealed by the polymer coating of the Micro-capsules, the cockroaches remain totally unaware of the presence of the fipronil.

Death occurs through either Contact Action - as the fipronil passes into the cockroach through the cuticle; Stomach Action - as the cockroach grooms itself and breaks or removes the Active Micro-capsules laced with fipronil; or through the Viral Transfer Effect™ - where the cockroaches pass the Active Micro-capsules onto other cockroaches.

PASSIVE CONTROL is achieved through the effects of the liquid film forming a residual defence zone. ATTRATHOR is applied as a targeted surface spray into cockroach harbourages and areas where cockroaches frequent. Here it works like any other residual surface spray, except there is a very big benefit because ATTRATHOR is powered by fipronil's non-repellent insecticidal chemistry, that protects the fipronil, slowly releasing it over time; providing up to three months of passive control.



Product Details

Active Ingredients:	26 g/L fipronil
Insecticide Group:	Phenylpyrazole
Formulation Type:	ATTRACT & KILL - Liquid bait
Pests Controlled:	Cockroaches and ants
Pack Size / Code:	250 mL (CHEAT1013) 500 mL (CHEAT1001)
Resistance Group:	2B

BITHOR®

Dual Action Insecticide

Two actives, two different modes of action combine into the unstoppable non-repellent.

Key Features

- ◆ **Two Actives;** Each with a totally different mode of attack combine into one unstoppable insecticide that is stronger than its individual components.
- ◆ **Non Repellent;** Bifenthrin is combined with the non-repellent imidacloprid, to create a combination product that is effectively non-repellent.
- ◆ **Blended Active Concentrate (BAC) Technology;** The two actives are milled and blended together so they meld into one to disguise their presence.
- ◆ **Long term;** Residual action is provided through the intensified effects of two well known and trusted actives.
- ◆ **Power From Synergy;** By combining two actives from two totally different chemical groups we create a unique product that kills the toughest pests. The two actives combine together to create a synergistic effect with each actively intensifying the effects of the other, to create a more potent solution than either alone.
- ◆ **Two Different Modes of Action;** Imidacloprid is a neonicotinoid insecticide that acts as a synaptic toxin. It mimics the actions of the naturally occurring neurotransmitter, acetylcholine. In contrast, bifenthrin is a pyrethroid insecticide that acts as an axonic toxin affecting the sodium : potassium gate.

Performance

BITHOR DUAL ACTION blends two actives, bifenthrin and imidacloprid, together to form a micro-suspension concentrate, where the particle size is optimised to penetrate the insect cuticle more readily, whilst providing improved residual performance on a wide range of surfaces and under a wide range of weather conditions.



SCAN QR OR
CLICK HERE



Product Details

Active Ingredients:	45 g/L bifenthrin, 55 g/L imidacloprid
Insecticide Group:	Bifenthrin (pyrethroid), imidacloprid (neonicotinoid)
Formulation Type:	Odourless, water-based micro-suspension concentrate
Pests Controlled:	Bed bugs, spiders, ants, cockroaches, mosquitoes, fleas, flies, biting midges & paper nest wasps
Pack Size / Code:	1 L (CHMBI1007) 3 L (CHMBI1008)
Resistance Group:	3A, 4A

BLATTATHOR[®] ULTRA Cockroach Gel Bait

A gel bait formulated with FIPRONIL,
the active you know and trust!

Key Features

- Highly palatable mix of attractants, nutrients and feeding stimulants;** A clear winner with its SUPERSONIC speed of kill and elimination of pest cockroaches, even nymphs - which means greater customer satisfaction and fewer call-backs!
- Supersonic knockdown;** The Viral Feed Through Effect™ ensures supersonic control of cockroaches, and with its high moisture retention, it keeps on killing.
- Highly palatable;** It is unique blend of several highly palatable cockroach foods and proprietary feeding attractants combine to ensure that cockroaches readily feed, giving you great results.
- Professional strength;** Fuelled by fipronil at 0.5 g/kg BLATTATHOR ULTRA ensures cockroaches start to vanish quickly, meaning greater customer satisfaction and fewer call-backs.



SCAN QR OR
CLICK HERE



Product Details

Active Ingredients:	Professional strength 0.5 g/kg fipronil
Insecticide Group:	Fipronil is a broad spectrum phenylpyrazole insecticide
Formulation Type:	Translucent cockroach gel
Pests Controlled:	Cockroaches
Pack Size / Code:	4 x 30 g tubes (CHEBG1002)
Resistance Group:	2B

ACCUTHOR GEL GUN

High Performance, Adjustable, Stainless Steel Gel Gun

The uniquely designed ACCUTHOR Gel Gun sucks the gel out of your gel tubes, ensuring a more accurate distribution and NO dripping.

Key Features: The ACCUTHOR Gel Gun is fully adjustable so you can control the amount of product dispensed, and it comes complete with a range of different tip sizes to give you total control over droplet sizes. It is a rugged design, constructed from stainless steel to give you many years of accurate use when used with 30 g or 35 g classic professional gel tubes, 5 positions for accurate dosage are available to give you just the right amount of gel for the treatment, ensuring the most precise and cost-effective placement. **Product Code: (EQPA1000)**



SCAN QR OR
CLICK HERE



CULITHOR™

Granular Mosquito Growth Regulator

Regulate mosquito emergence for long-term mosquito management.

Key Features

CULITHOR Granular Mosquito Growth Regulator uniquely uses our Intelligent Granular Microencapsulation Technology™ to provide controlled, long-term prevention of adult mosquito emergence. CULITHOR is an innovative approach to mosquito larval management programs providing effective control of both surface feeding and bottom feeding larvae. Intelligent Granular Microencapsulation Technology™ is a cutting edge process. A grain of sand is coated with carbon and gypsum containing our unique Controlled Release Active Micro-capsules™ (CRAM-capsules). The CRAM-capsules are 5.5 µm diameter, liquid core capsules with a natural chitosan shell. These contain the active ingredient, (S)-methoprene, which stops the growth of mosquito larvae to prevent adult mosquito emergence.

Performance

CULITHOR can be used in freshwater swamps and marshes, salt and freshwater lagoons, salt marshes, mangrove swamps, estuarine areas, woodland pools, or any natural water-holding features; in both open water situations or where water is obscured by vegetation. In fact anywhere where mosquito breeding is a current or potential problem.

◆ METHOD 1: Added to flood prone areas

CULITHOR can be applied prior to flooding by rain or tides. It will not be triggered into action until the water floods over it. Since the CRAM-capsules are protected by UV-filters, the CULITHOR will remain viable for up to three months, even in strong sunlight.

◆ METHOD 2: Directly to water bodies

CULITHOR can be added directly to the water where the mosquitoes are breeding for quick and effective control.



SCAN QR OR
CLICK HERE



Product Details

Active Ingredients:	12 g/kg-METHOPRENE
Insecticide Group:	Mosquitoes and Larvae
Formulation Type:	Granular mosquito growth regulator
Pests Controlled:	<i>Aedes</i> , <i>anophlets</i> , <i>culex</i> and <i>ochleratus</i> spp
Pack Size / Code:	1 kg (CHECL1001)
Resistance Group:	Group 7A Insecticide

CYPERTHOR[®]

Insecticide

The high performance, quality insecticide that combines the powerful residual action of an alternative pyrethroid active.

Key Features

- ◆ **Withstands degradation by sunlight, heat & once dry is unaffected by rain;** To give you a better result and fewer call-backs.
- ◆ **Highest quality micro-fine suspension formulation;** This ensures CYPERTHOR stays in suspension in your tank longer to give you optimal results. More importantly it ensures the particles of alpha-cypermethrin penetrate the insect cuticle more effectively resulting in faster control.
- ◆ **High quality water-based suspension concentrate;** To give you improved residual performance, odourless and no visible residues.
- ◆ **No hydrocarbon solvents;** Which means no worries about staining, no odour and no damage to your equipment, seals or pumps.
- ◆ **Approved for use indoors and outdoors, in food handling premises, hospitals, etc;** To give you maximum flexibility in your use of CYPERTHOR.
- ◆ **Rapidly metabolised in plants and mammals;** Making it safe to use in even the most sensitive environments

Performance

CYPERTHOR contains alpha-cypermethrin which offers you an alternative pyrethroid formulation for use in your accounts. Different chemical isomers perform differently, and the blend in CYPERTHOR is designed to give you premium performance.

The high performance, quality insecticide that combines the powerful residual action of an alternative pyrethroid active whilst providing flush-out and knock down in the toughest situations.



SCAN QR OR
CLICK HERE



Product Details

Active Ingredients:	50 g/L alpha-cypermethrin
Insecticide Group:	Pyrethroid
Formulation Type:	Microfine suspension concentrate
Pests Controlled:	Cockroaches, spiders, ants, flies, fleas, silverfish
Pack Size / Code:	20 L - 4 x 5 L (CHECY1000.002) 5 L (CHECY1000.001)
Resistance Group:	3A



DELTATHOR[®]

Insecticide

The proven, high performance, quality insecticide that combines the most powerful residual action with the safety features you demand for long lasting control of insects.

Key Features

- ◆ **Micro-fine Suspension Concentrate;** Most suspension concentrates use particle sizes closer to 10 - 20 microns. DELTATHOR has a uniform particle size of less than 5 microns. The micro-fine particle size gives you faster kill effects on insects and spiders. This is because the smaller particles penetrate the insect's cuticle quicker for fast control.
- ◆ **Withstands degradation by sunlight, heat & once dry is unaffected by rain;** To give you a better result and fewer call-backs.
- ◆ **Highest quality suspension formulation;** This ensures DELTATHOR stays in suspension in your tank longer to give you optimal results.
- ◆ **High quality water-based suspension concentrate;** To give you improved residual performance and no visible residues.
- ◆ **No hydrocarbon solvents;** Which means no worries about staining, no odour and no damage to your equipment, seals or pumps.
- ◆ **Approved for use indoors and outdoors, in food handling premises, hospitals, etc;** To give you maximum flexibility in your use of DELTATHOR.
- ◆ **Rapidly metabolised in plants and mammals;** Making it safe to use in even the most sensitive environments

Performance

DELTATHOR contains deltamethrin which remains arguably the most active of all the residual pyrethroids. This is because the deltamethrin in DELTATHOR is a pure, single isomer blend (Simplistically, an isomer is how the chemical is shaped). Different chemical isomers perform differently, and the blend in DELTATHOR is the most pure and insecticidally active giving you premium performance.

Deltamethrin has been registered in Australia for use by Pest Management Professionals since 1984, and personnel at



SCAN QR OR
CLICK HERE



Product Details

Active Ingredient:	10 g/L deltamethrin
Insecticide Group:	Pyrethroid
Formulation Type:	Micro-fine suspension concentrate
Pests Controlled:	All species of insects, including cockroaches, spiders, ants, fleas, silverfish, bed bugs, bird mites, carpet beetles, clothes moths, stored product insects, quarantine pests, five-spined bark beetles, furniture beetles, auger beetles, powderpost beetles, flies and mosquitoes
Pack Size / Code:	5 L (CHEDE1000)
Resistance Group:	3A

DELTATHOR is the ideal product for treating pests of timber and stored product insects.

Ensyslex have been associated with the development and support of deltamethrin since before then, so you can be sure of quality advice and care. The high performance, quality insecticide that combines the powerful residual action of an alternative pyrethroid active whilst providing flush-out and knock down in the toughest situations.



DIPHTHOR[®] DUO

Insecticide

Insecticide for public health. A ULV or Fogging spray for FAST action in the knockdown and kill of flying insect pests and cockroaches, DIPHTHOR DUO is simply the best for integrated pest management campaigns.

Key Features

- ◆ **Unique Formulation - mixes with oil or water;** Can be used for all situations due to flexible formulation options.
- ◆ **Extremely rapid knockdown and control of flying insect pests and cockroaches;** To give you a better result and fewer call-backs.
- ◆ **Packaged in easy pour, fluorinated, plastic containers;** This makes it more convenient to use DIPHTHOR DUO and enables you to measure required volumes more easily without spillage.
- ◆ **Highly active pyrethroid;** This ensures low application rates, minimal risk and highly successful control programs.
- ◆ **Label worded to allow for flexible application rates;** This puts you in total control and ensures DIPHTHOR DUO provides you with optimal levels of control in all types of application equipment, from ULV to thermal fogging to hand spray.
- ◆ **Scientifically proven and developed for use throughout Australia and SE Asia;** DIPHTHOR DUO has been independently tested to give you the confidence you need for large public health control programs.
- ◆ **Approved for use indoors and outdoors, around refuse tips, agricultural buildings, etc;** DIPHTHOR DUO is designed for use in applications in public health pest management programs, local council and Defence force programs and in the private sector. Wherever the pests are a problem, DIPHTHOR DUO is available.



SCAN QR OR
CLICK HERE



Product Details

Active Ingredients:	25 g/L cypermethrin
Insecticide Group:	Pyrethroid
Formulation Type:	Space spray
Pests Controlled:	Cockroaches, flies, biting midges and mosquitoes
Pack Size / Code:	1 L (CHED1001) 5 L (CHED1004)
Resistance Group:	3A

Performance

DIPHTHOR DUO is designed to be used at significantly lower levels of active ingredient than other competing products and still provide optimum control. This is due to the high potency of the active ingredient used in DIPHTHOR DUO. This means your public health pest management programs are much more cost effective when you use DIPHTHOR DUO and it means reduced insecticide load in the environment.

In independent Australian University trials, DIPHTHOR DUO provided 100% kill in all situations.

FUMITHOR™ DELTA

Insecticide Smoke Generator

A revolutionary new way of eliminating a wide range of flying and crawling insect pests, even in previously inaccessible places.

Key Features

- FUMITHOR DELTA uses smoke to reach inaccessible areas, penetrating deep into the tiniest cracks and crevices where the pests hide.
- With particle sizes down to just 1 micron the smoke can penetrate into places that are simply not reached by thermal fogs or ULV sprays.
- The active constituent, deltamethrin, is deposited on vertical, horizontal and underside of horizontal surfaces ensuring the most thorough treatment possible.
- There is nowhere for pests to hide from FUMITHOR DELTA!

POWERED BY DELTAMETHRIN:

FUMITHOR DELTA is the only insecticide smoke generator to use deltamethrin, a broad spectrum pyrethroid, as the active constituent:

- FUMITHOR DELTA is proven in independent trials to be up to 10 times more potent than other smoke generators.
- Less insecticide per m³ means it's more economical while reducing operator exposure to poison.
- Deltamethrin has been proven to have a good toxicological and environmental profile

Performance

The FUMITHOR DELTA generator is ignited to fill the air with advanced smoke technology.

MINIMAL IMPACT ON THE ENVIRONMENT: Smoke vapour is the optimal method of transmission when targeting large areas due to the minimal quantities of pesticide required - protecting your property and the environment.



SCAN QR OR CLICK
PRODUCT
VIDEO



Product Details

Active Ingredients:	20 g/kg deltamethrin
Formulation Type:	Ready to use smoke generator
Registered to kill:	Ants, cockroaches, caterpillars, cockroaches, fleas, flies, mosquitoes, hide beetles, silverfish, bed bugs, spiders, stored product insects, bird mites, carpet beetles, clothes moths, aphids.
Pack Size / Code:	FUMITHOR™ DELTA 40 g x 6 Generators (CHEFD1011)

Where to Use

Ideal for enclosed areas: such as storage sheds, warehouses, shipping containers, commercial buildings, industrial facilities and public spaces. Protects agricultural areas: including grain silos, glasshouses, animal housing and agricultural buildings.

Rapid clean-out of insect pests: in commercial and domestic situations that need protecting quickly and effectively.

HYMENOPTHOR® ULTRA

Granular Ant & Cockroach Bait

Targeted to kill all species of ants and cockroaches, including nymphal stages.

Key Features

- ◆ **Eliminates;** All species of ants and cockroaches, including large and small cockroach species.
- ◆ **Liquid Oil Phase Release™;** Technology ensures uptake of the fipronil, and produces results equal to, or better than, those of gel baits for cockroaches - including nymphal stages.
- ◆ **Viral Feed Through Effect™;** Of fipronil further ensures its rapid spread throughout ant colonies. Since fipronil is a quick acting insecticide, it is important to use it at a low rate to ensure it is spread throughout the entire colony.
- ◆ **Advanced Bait Technology™;** Provides a unique composite of proteins, sugars and oils to target sugar feeding species, oil feeding species and protein feeding species.
- ◆ **Ultra Strong;** Performance is particularly spectacular when targeting cockroach nymphal stages, the most difficult life-stage to control.

Product Details

Active Ingredients:	0.1 g/kg fipronil
Insecticide Group:	Phenylpyrazole
Formulation Type:	Granular bait - ready-to-use
Pests Controlled:	Ants and cockroaches, all species
Pack Size / Code:	450 g (CHEHU1000)
Resistance Group:	2B

HYMENOPTHOR® Ant Bait Station

This durable device has been created for professional pest managers as an attractive and cost effective way to contain your ant baits at sensitive sites.



SCAN QR OR
CLICK HERE



Performance

As a granular bait, efficacy is enhanced by the ant's feeding behaviour. Worker ants are generally liquid feeders and cannot ingest solid baits. So they use their legs and mouthparts to physically carry the solid bait granules back to the nest for the larvae to digest and feed to the colony.

Therefore the bait is not diluted when it reaches the nest. In contrast, with liquid or gel baits, the ants ingest the bait and then pass it through to nest mates by trophallaxis, which means there is some dilution of the toxicant as it is passed from one ant to the next. More importantly though, with the Liquid Oil Phase Release™ technology, the workers are also able to feed directly on the HYMENOPTHOR ULTRA and receive a toxic dose of the active, as well as feeding on the pre-digested liquid from the larvae.

Cockroaches have an exceptionally high preference for solid based foods, with bread ranking higher than most cockroach gels as a preferred food. HYMENOPTHOR ULTRA optimally satisfies cockroaches preference for a cereal based diet leading to aggressive feeding and a speed of kill better than that achieved with gel baits. The Liquid Oil Phase Release ensures the fipronil is readily digested by the cockroaches.



SCAN QR OR
CLICK HERE



MAXXTHOR®

Termiticide & Insecticide

High performance termiticide and insecticide for indoors & outdoors. Superior soil penetration, powerful performance, odourless, professional strength, water-based and long-term residual.

Key Features

- **A unique professional strength, water-based formulation containing 100 g/L bifenthrin that is priced to perform;** This gives you premium quality at a price you can truly afford.
- **MAXXTHOR is labelled for the long-term control of a wide range of pests including urban insect pests, vectors, spiders, ticks, turf insects and termites;** So when you carry MAXXTHOR with you it is a total solution for all your pest control needs.
- **MAXXTHOR Mosquito Protection Zone;** A Special program providing your clients with up to eight weeks of freedom from mosquitoes and other biting insects.
- **Odourless;** No need to worry about smells. Since this is a water-based product it is gentle on the nose.
- **Water-based;** No staining, no corrosion of your equipment.
- **Tested in Australian soils and through reticulation systems;** Since MAXXTHOR was the primary registrant we had to prove its performance in a wide range of soils. So you can be sure it offers the best quality termite barrier possible.
- **Withstands degradation by sunlight, rain and heat;** So you have fewer call backs.
- **Non-sensitising;** This means you are less likely to experience the skin tingling associated with most pyrethroids.
- **Safe to plants and rapidly metabolised by plants and animals;** In fact MAXXTHOR is designed for direct application to foliage. And the active ingredient is in widespread use on a wide range of food crops.
- **Approved for use indoors and outdoors, in the most sensitive areas;** So you can take it anywhere with you.
- **No hydrocarbon solvents;** So you have no worries about staining, odours, or equipment corrosion.



SCAN QR OR
CLICK HERE



- **Approved for both pre-construction and post-construction termite management;** A total termite solution.
- **Long term residual;** There is no product on the market with a longer label claim for termite management. MAXXTHOR claims protection for ten years or more.
- **Contains Ensystex's unique Microbial Protection Blend™;** To ensure the product remains fresh out in the field and in the back of your truck.

Product Details

Active Ingredients:	100 g/L bifenthrin
Insecticide Group:	Pyrethroid
Formulation Type:	Micro-fine suspension concentrate (water-based)
Pests Controlled:	Controls a wide range of pests as per the product label
Pack Size / Code:	5 L (CHEMX2010)
Resistance Group:	3A

Performance

MAXXTHOR also comes with the Ensystex Ten Year Performance Guarantee.*

MAXXTHOR®

Sand Granule Insecticide

Penetrates deep for more effective control. The perfect choice for the toughest outdoor jobs. No odour, high performance, and long-term residual action.

Key Features

- **Heavy sand granule formulation penetrates the densest foliage to get the insecticide to where the pests are;** This makes MAXXTHOR SAND GRANULE INSECTICIDE the optimal product for external control of ants, fleas and ticks in gardens, lawns, around BBQ's, the perimeter of properties, etc.
- **Withstands degradation by sunlight & heat;** To give you better results and fewer call-backs.
- **Not affected by rain;** In fact MAXXTHOR SAND GRANULES can be activated by spraying with water. This also means you can apply it in rainy weather so there is no need to cancel jobs due to inclement weather.
- **Not noticeable on most target surfaces;** Your clients see little evidence of your actual treatment, simply a reduction in their ant problems.
- **Non-sensitising;** No skin sensitivity issues under normal usage.
- **Safe to plants;** Can be safely applied to plants, lawns, shrubs for tick or ant control in particular, without any adverse effects.
- **Can be applied around EXTERRA Monitoring Stations;** This can help you resolve problems in-ground with ants infesting your EXTERRA program. This is the only granular product approved for this usage. It can also be placed underneath the EXTERRA Termite Baiting Station. NB: DO NOT apply directly to station or interceptors.
- **Not classified as a scheduled poison;** So you can use MAXXTHOR SAND GRANULE INSECTICIDE with confidence in even the most sensitive environments.
- **No mixing, no dilution;** Makes MAXXTHOR SAND GRANULE INSECTICIDE quick and convenient to use and speeds up your treatment process.
- **Rapidly metabolised in plants and mammals;** Making it safe to use in even the most sensitive environments.



SCAN QR OR
CLICK HERE



Product Details

Active Ingredients:	2 g/kg bifenthrin
Insecticide Group:	Pyrethroid
Formulation Type:	Sand granules
Pests Controlled:	Ants, fleas, ticks and lawn pests
Pack Size / Code:	4 x 5 kg (CHEMX1021)
Resistance Group:	3A

Performance

MAXXTHOR SAND is a pyrethroid insecticide. MAXXTHOR SAND GRANULE INSECTICIDE was developed and formulated specifically for professional pest management treatments. Ideal for use as a repellent barrier on lawns, garden beds, in between pavers or any other external situation.

MAXXTHOR SAND GRANULE INSECTICIDE will reactivate each time moisture is introduced and remain active for longer. Since bifenthrin is a pyrethroid insecticide it displays relatively low levels of mammalian and avian (bird) toxicity.

MAXXTHOR® TURBO

Targeted Insecticide

Turbo charge your clients into the future, today. STOP Callbacks, increase client satisfaction through Superfast knockdown, Long term residual performance, Resistance Fighter.

Key Features

- **Revolutionary;** New suspo-emulsion formulation combines three active ingredients together to work better than anything you have experienced before.
- **Turbo Kill;** The turbo charged oil phase enters rapidly through the insect's spiracles; allowing the oil phase insecticides to instantly halt the insect nervous system.
- **Long Term;** The micro-particles of bifenthrin are evenly spread by the TURBO organic phase ensuring long-term protection.
- **Resistance Fighter;** Piperonyl butoxide works to inhibit the enzymes that breakdown and detoxify pyrethroids, thus restoring their effectiveness against resistant or tolerant insects. Moreover it has also been proven to delay resistance development. Piperonyl butoxide is a specific inhibitor of microsomal oxidases, and has also been shown to inhibit resistance-associated esterases. Both these modes of action serve to enhance and potentiate the power of MAXXTHOR TURBO to ensure you get the best results.

Performance

A real problem with pyrethroid insecticides is the way they can scatter the insects, especially cockroaches. This in turn can lead to a spread of the problem. MAXXTHOR TURBO provides a total solution through the super fast action of imiprothrin, and its exceptional activity against cockroaches.

This speed of action arises as a consequence of imiprothrin acting much faster at the target site, the insect nervous system, than any other pyrethroid. When imiprothrin is applied directly to the cockroach nervous system, there is a rapid decline in spontaneous firing, followed by the rapid and complete disappearance of any charge.



SCAN QR OR
CLICK HERE



Product Details

Active Ingredients:	100 g/L bifenthrin, 10 g/L imiprothrin, 120 g/L piperonyl butoxide
Insecticide Group:	Synergised pyrethroid
Formulation Type:	Suspo-emulsion
Pests Controlled:	Controls a wide range of pests as per the product label
Pack Size / Code:	1 L (CHEMT1002)
Resistance Group:	3A

PERMETHOR®

Insecticidal Dust

The finest dust for professional pest managers. Your Number One choice for ready-to-use, broad spectrum control in roofs and wall voids. Flows deeper into cracks and voids to give you optimal results.

Key Features

- **Exceptionally light dust formulation;** To flow further and deeper into cracks, crevices and voids where pests are found. This ensures you are easily able to get the product where it will be most effective.
- **Odourless;** This means that, when correctly applied, your clients see little evidence of your actual treatment, simply a reduction in their pest problems.
- **Wide use;** A broad label that even includes control of European wasps and feral honey bees so you can target the broadest spectrum of pests.
- **Withstands heat;** Very low degradation in high temperatures to give you better results and fewer call-backs.
- **Finer dust;** To give you superior coverage to apply the finest of coatings to surfaces. The finer the dust coating the more likely the pests are to make contact and pick-up the insecticidal deposit providing you with long term effective control.
- **Non-sensitising;** Under normal usage conditions you can expect no sensitivity issues.
- **Long residual activity;** Of up to 6 months or more so you can provide your clients with long-term insect control and minimise call-backs.

Performance

PERMETHOR dust is ideal for areas where liquid based formulations are not suitable. This includes large voids or areas where there is a risk of corrosion or spray drift to electrical equipment. For best results in roof or wall voids apply using a power duster. PERMETHOR is most effective when a fine coating only is applied. Ensure you use the lightest application of dust and avoid "mounds" of dust as insects will not pass through these.



SCAN QR OR
CLICK HERE



Product Details

Active Ingredients:	10 g/kg permethrin
Insecticide Group:	Pyrethroid
Formulation Type:	Ready to use dust
Pests Controlled:	Cockroaches, silverfish, ants, fleas, carpet beetles, bed bugs, spiders, bird mites, hide beetles, mushroom sciarid flies, potato moths, subterranean termites, European wasps and feral honey bees
Pack Size / Code:	5 kg (CHEPE1003)
Resistance Group:	3A

PERMETHOR is a pyrethroid insecticide. PERMETHOR was developed and formulated specifically for professional pest managers.



PERMETHOR is also ideal for use as a flushing agent during inspections to identify cockroach and other pest harbourages.

For the most effective control use PERMETHOR in association with a liquid spray to other pest harbourages and surfaces using products such as BITHOR, CYPERTHOR or MAXXTHOR.

PROTHOR™

200 SC Termiticide

The protector providing a professional standard for protecting buildings against termites.

Key Features

- **Innovative Formulation;** Ensystem have taken the formulation of imidacloprid as a termiticide to the next level. With a micro-fine suspension concentrate ensuring particle sizes of less than 5 microns for better soil penetration and viral transfer. PROTHOR is also blended to protect it better from degradation in your vehicles.
- **PROTHOR is undetectable;** Some soil treatment termite control products do not kill termites, instead they repel them. These products are effective when applied in a perfect and continuous gap-free termite barrier, but if there are any gaps in the barrier through which termites can enter, its 'hello termites'.
- **Minimal impact on the environment and you;** Studies have shown that during applications of PROTHOR, airborne residues of PROTHOR in the structure are minimal. This means it is safe to remain at home while PROTHOR is being applied under and around your home. This is unlike some other termiticides which require you to vacate your home while they are being applied.
- **PROTHOR is easy on the nose;** In fact PROTHOR is almost odourless since it is a water-based product.
- **Non-sensitising;** This means no unpleasant sensations as often caused by other termiticides.
- **Safe to plants and rapidly metabolised;** Indeed the active in PROTHOR is widely used on agricultural food crops, in orchards, nurseries and in products applied directly to pets.
- **Approved for post-construction and pre-construction treatments;** For pre-construction PROTHOR should be applied through a reticulation system.
- **Employs Ensystem's unique Microbial Protection Blend™;** To ensure the product remains fresh out in the field and in the back of your truck.

Performance

When applied to soil at recommended rates, PROTHOR is undetectable by termites as they tunnel through it. Since termites can't detect PROTHOR treated soil, they can't avoid it and are killed by their contact with it. We call this the PROTHOR Termite Defence Zone™.



SCAN QR OR
CLICK HERE



When termites unknowingly tunnel through PROTHOR treated soil, they accumulate PROTHOR on the outside of their bodies. PROTHOR does not immediately kill termites exposed to it. The delayed toxicity of PROTHOR allows contaminated termites to interact with non-exposed termite nestmates. This interaction can take place over three days. This ensures greater transfer and kills more termites than similar products. Non-affected termites that clean and groom other termites recently exposed to PROTHOR are themselves secondarily exposed and killed. This transmission of PROTHOR from termite to termite which cannot be detected or avoided by termites is referred to as the PROTHOR Viral Effect™.

The active ingredient in PROTHOR has some very special and unique soil binding properties. Chemists call these properties Hysteretic Binding. This unique chemistry means that PROTHOR is relatively slow to bind to soil particles, but once it does bind, it grips very tightly to ensure the PROTHOR Termite Defence Zone remains in place for a long time to keep on killing termites. This hysteretic binding effect is important because it ensures that the PROTHOR Defence Shield™ created around your clients home is as complete and continuous as possible.

Product Details

Active Ingredients:	200 g/L imidacloprid
Insecticide Group:	Neonicotinoid
Formulation Type:	Water-based, micro-fine suspension concentrate
Pests Controlled:	Termites
Pack Size / Code:	3 L (CHEPR1000)

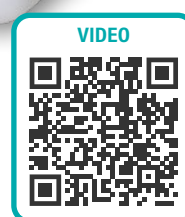
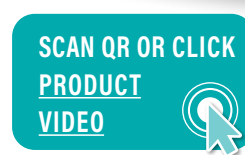
ULTRATHOR X™

ADVANCED FLOW Water-Based Termiticide and Insecticide

Next Generation Termite Protection & Insect Control

Key Features

- The ULTRATHOR X difference lies in our exclusive Advanced Flow Micro-suspension Formulation™ that provides improved flow characteristics to better penetrate the soil and create a more complete and continuous Termite Defence Zone™.
- ULTRATHOR X has been tested and proven to provide improved soil penetration, which has resulted in a class-leading APVMA registered label that allows for rod injection with injection holes approved to be spaced 350 mm apart in clay soils and 450 mm apart in other soil types.
- ULTRATHOR X provides fast elimination of termites and any other insect pests attacking your property together with highly effective, long-term residual termite control. With its unique mode of action, we guarantee that ULTRATHOR X will provide proven protection against termite entry for up to 8 years or more. ULTRATHOR X is uniquely labelled to control all species of crawling insect pests.
- ULTRATHOR X is non-repellent. This means that insects are totally unaware of its presence around your home. So, they continue their normal activities, totally unaware that it is slowly building up in their bodies, until it reaches a lethal dose. And no more termites or other insects!
- ULTRATHOR X is toxic to insects by contact or ingestion. It causes death by disrupting their nervous system. It binds to three types of calcium-channels on the membranes of insect neurons, preventing calcium ion influx into the cell. One of these channels is controlled by the neurotransmitter gamma-aminobutyric acid (GABA) and the other two are controlled by glutamate. The presence of three different target sites accounts for ULTRATHOR X's high potency.
- ULTRATHOR X displays selective activity due, in part, to the fact that glutamate-mediated chloride channels are unique to invertebrates, like insects and termites. Also, fipronil binds more tightly to the GABA controlled chloride channel of insects than to that of mammals or birds. This increases the margin of safety for people, pets and other animals. Fipronil is also non-toxic to earthworms.



Product Details

Active Ingredients:	100 g/L FIPRONIL
Insecticide Group:	Fipronil is a broad spectrum phenylpyrazole insecticide
Formulation Type:	Water based termiticide and insecticide
Pests Controlled:	Subterranean termites, various insect pests
Pack Size / Code:	1 L (CHEUL1000) 3 L (CHEUL1017)
Resistance Group:	Group 2B insecticide

- ULTRATHOR X binds tightly to soil, has low solubility in water, and a low vapour pressure, as do its environmental degradates. Low application rates, combined with the unique ULTRATHOR X formulation also reduces the risk of run-off.

Performance

ULTRATHOR X is the only fipronil-based product in the market that has an APVMA (Australian Pesticides & Veterinary Medicines Authority) approval for control of ALL species of crawling insects together with rod injection spacings at up to 450 mm. So, one product, ULTRATHOR X, does it all!

VECTOTHOR™ IN2CARE®

Mosquito Station

Exploiting mosquito behaviour
to eliminate mosquitoes safely.

Key Features

Dengue, chikungunya, yellow fever and Zika virus are rapidly spreading mosquito-borne viral diseases. They are difficult to diagnose and treat, and mosquito control is the only option to stop transmission. These mosquito-borne diseases are the most significant public health risks globally, with dengue fever one of the most important arboviral diseases in humans.

The VECTOTHOR IN2CARE MOSQUITO STATION provides the scientific way to combat *Aedes* mosquitoes that transmit dengue, chikungunya, yellow fever and Zika virus.

- Kills all mosquito larvae in the Station
- Kills all mosquito larvae in surrounding breeding sites
- Kills exposed adult mosquitoes
- Stops virus development!

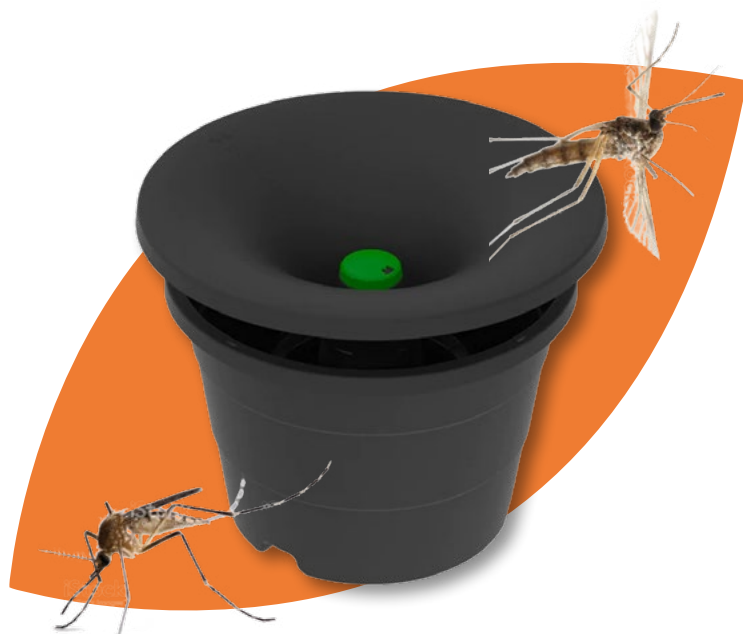
Performance

Only female mosquitoes bite people. This is to secure a blood feed, which is required for egg laying, after which they can transmit the deadly viruses (male mosquitoes do not bite).

Aedes mosquitoes are difficult to control as they lay their eggs in water in very small and hard-to-find cryptic breeding sites (e.g. spathes of plants and artificial containers such as pots, earthen jars, drums, concrete tanks, coconut shells, vases, old tyres, rubbish and more).

The VECTOTHOR IN2CARE MOSQUITO STATION attracts and kills the blood-sucking *Aedes* females using two bioactive agents, to target both the mosquito larvae and adults. It is a multi-impact, auto-dissemination Station that provides effective kill of mosquito larvae in breeding sites in a wide area surrounding the Station. The Station will also target other 'pot' breeding species such as *Culex pipiens Linnaeus* (common house mosquito).

Insecticide resistance has become a major problem. Large scale insecticide fogging programs show limited efficacy and major impacts on non-target organisms. This necessitates a switch to more sustainable, environmentally friendly vector control. The VECTOTHOR IN2CARE MOSQUITO STATION uses a natural, US-EPA approved, fungus to kill adult mosquitoes; and the Insect Growth Regulator is a WHO recommended ingredient that can even be used in drinking water. Both bioactives have short half-lives in the environment and are classified as low risk for non-target organisms.



SCAN QR OR
CLICK HERE



Product Details

Active Ingredients:	750 g/kg pyriproxyfen, 100 g/kg <i>Beauveria bassiana</i> in the form of a dustable powder. Insect growth regulator with fungal spore
Insecticide Group:	6.5A, 6.5B, 9.1A, 9.4A
Formulation Type:	Powder
Pests Controlled:	<i>Aedes</i> mosquitoes
Resistance Group:	7C

ONLY AVAILABLE IN NEW ZEALAND

How to Use

- 1. CONFIRM TARGET SPECIES**
Dengue + Asian tiger mosquito
- 2. MAP THE TARGET AREA**
One Station per 400 m²
- 3. PLACE AND SECURE STATIONS**
Shaded, vegetated places
- 4. MONTHLY MAINTENANCE**
Top up with water + sachet
- 5. MONITOR AND RECORD RESULTS**
- 6. SIT BACK AND RELAX...**

ZENITHOR™

Gel Cockroach Bait

A LEGEND EMERGES... ZENITHOR was developed with the view of creating a legendary cockroach gel bait, a gel bait that outperforms all others.

Key Features

- ◆ **Ensures Faster Kill;** In trials with the German cockroach (*Blattella germanica* Linnaeus), ZENITHOR killed more than 80% of the cockroaches within 24 hours and 100% mortality occurred after 72 hours. It well out-performed even the leading fipronil based cockroach gel bait.
- ◆ **Enhanced Palatability;** To ensure optimal feeding, ZENITHOR's fine dining recipe provides a complete nutrient source including novel ingredients to ensure it is eaten in preference to competing foods in the environment.
- ◆ **Synergised High-Consumption Bait Technology™;** Provides a unique and novel range of natural sensory attractants to draw the cockroaches to the bait spots, together with some carefully selected feeding stimulants to promote increased consumption of gel baits, leading to improved performance.
- ◆ **Viral Excretion Transfer™;** ZENITHOR intoxicated cockroaches contaminate their harbourages and the surrounding environment with ZENITHOR-enriched vomitus and faeces to create the most potent Transfer Effect. Viral Excretion Transfer is critical for passing the toxicant on to early instar nymphs, that do not venture far for their food resources.
- ◆ **ZENITHOR Enzyme Bio-activation™;** Following consumption, ZENITHOR is metabolised into a deadly insect neurotoxin, causing gradual death. This requirement for the conversion of the active provides a safety factor since it is effectively 'activated' by the insect.
- ◆ **Eliminates bait adverse cockroaches;** It is well documented that populations of the German cockroach have rapidly evolved an adaptive behavioural aversion to glucose, a component of most commercial baits. ZENITHOR does not use glucose in the formulation, so it can effectively tackle the toughest cockroach jobs.



SCAN QR OR
CLICK HERE



Product Details

Active Ingredients:	6.0 g/kg (S)-indoxacarb
Insecticide Group:	Oxadiazine
Formulation Type:	Gel bait - ready-to-use
Pests Controlled:	Cockroaches
Pack Size / Code:	4 x 30 g (CHEZA1002)
Resistance Group:	22A

Performance

ZENITHOR's outstanding performance arises from our most complex cockroach gel formulation to date. Employing the most sophisticated gel chemistry, ZENITHOR provides improved physical performance; giving you the functional features you demand in terms of ease of application, with the gel spots staying put, whilst still retaining their high moisture content to provide improved flavour for cockroaches - and longer-lasting results.

But there is even more to this legend, ZENITHOR introduces more than ten feeding stimulants and sensory attractants to maximise cockroach feeding, deliver faster kill and ensure total elimination of all cockroach aggregates.

ZENITHOR Gel Cockroach Bait has been formulated to provide a stable gel, even in hot kitchens and tropical environments, whilst retaining a moist, viscous presentation at all times to ensure superior consumption by cockroaches for an extended time frame.



Fumigants



ZYTHOR® GAS FUMIGANT

Provides broad-spectrum control of stored product pests and quarantine pests.

Key Features

The premium broad-spectrum fumigant with superior penetration, for the control of insect pests of stored products, timber, shipping containers and furnishings. With its unique mode of action, it is also the perfect rotation fumigant to break the resistance cycle reported with other fumigants such as phosphine.

- ZYTHOR rapidly penetrates porous materials.
- ZYTHOR more rapidly aerates from materials and commodities.
- ZYTHOR shows lower sorption on fumigated materials.
- ZYTHOR does not react with materials to form unpleasant odours or off-flavours.
- ZYTHOR is suitably toxic to all target insect species and rodents.
- ZYTHOR is not explosive at any concentration in the air.
- ZYTHOR is not an ozone depleter.

FUMICALC™ for Targeted Results

FUMICALC is our computer-based program that has been developed to ensure the accurate use of ZYTHOR. Designed specifically for use in Australia, but incorporating the heritage developed over 15-years of use in the USA, Fumicalc offers options for:

- UNIQUE resistance management grain fumigation based on the latest Australian resistance data
- Commodity food and commodity storage fumigation
- Structural fumigation
- User Defined CT
- Rodent control only

FUMICALC is cloud based and can be used on any smart phone, tablet, or computer regardless of the Operating System to make fumigation calculations simpler and faster.



SCAN QR OR
CLICK HERE



Product Details

Active Ingredients:	998.0 g/kg sulfuryl fluoride
Pesticide Group:	Fumigant
Formulation Type:	Gas under pressure
Pests Controlled:	Rodents and insects such as borers, bed bugs, cockroaches, clothes moths, carpet beetles, drywood termites and all life-stages of stored product pests.
Pack Size / Code:	56.5 kg (CHFZY1001)
Resistance Group:	8C

Performance

Numerous peer-reviewed efficacy studies have been published in Australia and around the world to define effective dosages and fumigation practices to optimise the control of key insect pests with sulfuryl fluoride.

ECOTHOR

ACTIVE NATURE®



ENTRAP

Poison-Free Pest Management

Poison-free solution for the control of all species of crawling and flying insects.

Key Features

ENTRAP employs a purely physical mode of action to trap and immobilise a wide range of insects and arachnids. It contains NO neurotoxic components. It works like a sprayable sticky spider's web to encase and rapidly immobilise the insects. Death arises from the insect having been immobilised (caught in the web) and left unable to move, just as if it were entrapped in a spider's web.

ENTRAP is sprayed directly on to the target pest, where the unique polymer structure of the cellulose encases the insect and restricts its ability to move. This rapid immobilisation then leads to the death of the insect.

ENTRAP provides professional pest managers the opportunity to offer clients a poison-free pest management solution. More and more often, we hear people demanding that they want low-toxic, natural pest solutions. ENTRAP enables you to deliver on this premise. ENTRAP is widely used in Europe by professional pest managers for this very reason.

- Poison-free
- Food-grade - All ingredients are approved for use in foods for human consumption
- Naturally derived from pine trees grown in sustainable forests
- Rapidly immobilises pest insects which leads to their subsequent death
- Works like a sprayable spider's web
- Kills insects resistant to traditional insecticides
- Water-based spray
- Certified for organic use
- Concentrate and Ready-to-use formulation



Product Details

Active Ingredients:	37 g/L Hydroxypropyl Methylcellulose
Insecticide Group:	Physical mode of action
Formulation Type:	Liquid concentrate / Ready to use pump pack
Pests Controlled:	Crawling and flying insects
Pack Size / Code:	1 L liquid concentrate (ENCET1004) 500 mL Ready to use pump pack (PROTAR2071)
Resistance Group:	N/A

Performance

Since ENTRAP is poison-free and has a purely physical mode of action, entrapping and immobilising the insect, it will also just as quickly kill those insects that are resistant to traditional pesticides. ENTRAP has no residual performance, so it quickly disappears from the environment.



FLY-FREE TRAP

Fly Control that Really Works

Perfect for any outdoor area where flies are a problem.



Key Features

Control flies in any outdoor area... resorts, holiday parks, around commercial food processing and food handling establishments, around livestock, municipal waste sites and more. You can even enjoy the outdoor spaces around your home fly-free!

ECOTHOR ACTIVE NATURE FLY-FREE uses a pesticide-free 100% natural approach to fly control, employing a unique and highly attractive, food-based lure to draw the flies into the proprietary FLY-FREE Traps, from which there is no escape. Quite simply, FLY-FREE becomes their final resting place in this ecological approach to fly control. It's also simple and easy to set up and maintain!

Performance

FLY-FREE Granules are 100% food-based. The granules come in a water-dispersible sachet, so there is no messy preparation, just fill the FLY-FREE Trap with water and throw in the sachets. The sachets slowly dissolve and release the granules into the water. Over the next few days, the granules activate in the water and start to emit a highly attractive odour that flies just adore. After 2-3 days you will see many flies buzzing around the Traps.

The Traps contain our unique Unidirectional Cones. These Cones allow the flies to easily enter the FLY-FREE Trap. Since they cannot escape, the FLY-FREE trap, quickly becomes the flies' final resting place. You will likely be amazed just how many flies you will catch!



SCAN QR OR CLICK
PRODUCT
VIDEO



Product Details

Active Ingredients:	Pesticide-free, unique food-based lure
Formulation Type:	Trap with bait
Pests Controlled:	Common species of nuisance flies including house flies (<i>Musca domestica</i>), flesh flies (<i>Sarcophaga</i> spp), blow flies (Calliphoridae family), lesser house flies (<i>Fannia canicularis</i>) and horse flies (Tabanidae family).
Pack Size / Code:	5 L with 2 lure sachets, or 10 L bucket with 4 lure sachets (ENFF1016 / ENFF1015)
Resistance Group:	N/A

INSECT TRAP

Disposable 3-in-1 Cardboard Trap

Setting the standard for cockroach and stored product Insect attraction.



Key Features

This attractive, disposable 3-in-1 cardboard trap has a low profile making it easy to place in a variety of situations.

Ensystem spent a great deal of time researching cockroach behaviour and optimising the perfect blend of cockroach attractants to ensure premium results. We have then bench-marked this trap to ensure it is the best performing lure trap on the market. This has resulted from improvements to both the glue and the attractants used.

Cockroach behavioural studies by researchers such as Durier and Rivault at Université de Rennes, Professor Raubenheimer from the University of Sydney, SA Jones from Oxford University and Appel and Rust at the University of California, Riverside have revealed a great deal about cockroach feeding and foraging behaviour. This knowledge has been developed into the latest versions of this product to provide outstanding performance characteristics.

The attractants are incorporated into the glue, which better suits the requirements of HACCP programs. However, the release technology and attractants used ensure the traps keep attracting cockroaches and stored product insects for a good three months or more. The glueboard will catch and retain nymphs and adults of all important pest species, including *Periplaneta* cockroach species.

SCAN QR OR
CLICK HERE



Product Details

Active Ingredients:	Natural plant oil lure
Insecticide Group:	N/A
Formulation Type:	Sticky base impregnated with food lure
Pests Controlled:	Adult & nymph cockroaches including <i>Periplaneta</i> cockroach species and stored product insects
Pack Size / Code:	CHEBT1000
Resistance Group:	N/A

Performance

Each ECOTHOR Insect Trap is versatile and can be used as either a single large trap, in areas of higher infestation; or it can be separated to form three small monitor traps, allowing you the opportunity to make more placements, which is particularly useful when monitoring to determine the effectiveness of your control programs.



INSECT MONITOR

Heavy-duty Reusable Monitor / Trap with Glueboard

Powerful natural plant oil lure.



SCAN QR OR
CLICK HERE



Key Features

This is a heavy-duty, plastic Monitor and Trap. The ECOTHOR ACTIVE NATURE Insect Monitor has been designed for use in any position with angled entry ramps that ensure insects enter first time. Use your ECOTHOR ACTIVE NATURE Insect Monitor over and over again with a glueboard that is easily replaced.

- Early detection of pests, even when low levels of infestation are present.
- Information on the distribution and extent of pest problems throughout a location to enable you to pinpoint the source of an infestation.
- Data for optimum timing and location of pesticide applications, which assists in reducing the number of treatments.
- Assessment of the efficacy of control measures when used post-treatment.
- Continuous monitoring of pest populations.
- As a population reduction measure in premises where chemical treatments are not possible.
- Professional presentation enhances your image with your clients.

Performance

Designed for use in any position, even on its side, or upside down in a cupboard. Angled entry ramps ensure insects enter first time. This re-usable Monitor can be used again and again, in fact we recommend it.

When cockroaches gather they release pheromones which attract even more cockroaches. These natural aggregation pheromones account for a complex cocktail of more than 150 chemicals, so mimicking this effect is almost impossible.

Product Details

Active Ingredients:	Natural plant oils (attractant)
Pesticide Group:	N/A
Formulation Type:	Hard trap with glueboard and lure
Pests Controlled:	Cockroaches and stored product insects
Pack Size / Code:	CHEBI1014 Refills: Pack of 100 CHEBI1015
Resistance Group:	N/A

Research shows that cockroach deposits are the main repository for the pheromones and they continue to be attractive for a year or more.

The ECOTHOR ACTIVE NATURE Insect Monitor ensures that by replacing only the glueboard these very effective, natural aggregation pheromones remain; so you have the dual action of a powerful natural plant oil lure combined with the additional attractiveness of natural pheromones.

NATURAL SNAIL AND SLUG KILLER

With Elemental Iron

The Only Certified Organic Input
to kill Snail and Slugs

Key Features

A more effective, natural alternative, to toxic chemical baits such as metaldehyde and methiocarb, with similar or better levels of control and protection.

All the ingredients are used in either food for human consumption, nutraceuticals or pharmaceuticals for human applications.

- Highly effective
- The only Organic Approved Input snail and slug killer
- Ready to use pelletised bait optimised for Australian snails and slugs.
- Designed to blend in with the environment
- ENVIRONMENT FRIENDLY: Breaks down to natural nutrients for soils and plants.
- Specially formulated for use by people who care about their pets, native birds, fauna and earthworms.
- Can be used where there are dogs, cats, birds, possums and other fauna.

Performance

MINERAL SNAIL & SLUG KILLER uniquely uses food grade elemental iron, as used in human dietary supplements; with a separate, free form, chelating agent that is widely used in human pharmaceuticals and cosmetics. Each on their own have no effect on snails or slugs. They are kept quite separate in the Mineral Snail & Slug Killer bait and do not react with each other, even if the bait pellets are soaked by rain. Only when the bait is eaten by the snails do the two compounds join and activate, in the low pH environment of the snail's gut, resulting in the death of the snails. The snails or slugs simply lose their appetite and crawl off to seek shelter and protection where they die.

This means it is low-toxic to earthworms, soil micro-organisms, birds, fish, reptiles, and most importantly people and pets.



SCAN QR OR
CLICK HERE



Product Details

Active Ingredients:	10 g/kg iron powder
Pesticide Group:	Natural Mineral
Formulation Type:	Food-based pellet
Pests Controlled:	Snails and slugs
Pack Size / Code:	5 kg (PROT1023) 1 kg (PROT1024)
Resistance Group:	N/A



**THE ONLY APPROVED ORGANIC
CONTROL OPTION**

**Approved for use with
EXTERRA Termite Stations and
RODENTHOR Bait Stations.**

Invasive Pest Solutions



APITHOR™

Hive Beetle Harborage

A simple and successful way to save your hives from the damaging effects of the invasive small hive beetle.

Key Features

This single use, disposable device controls invasive small hive beetles, without harming you, your bees or your honey.

The APITHOR Hive Beetle Harborage is a novel invention designed as a single use, disposable device that can be easily inserted and removed from standard hives without the need to open or dismantle the hives.

You can be confident that APITHOR has been fully evaluated for its safety to bee hives - you simply can't go wrong with this product!

- Rigid plastic design that fits on the hive bottom board to ensure beetles enter the harborage.
- Tamper-resistant for added safety.
- Precise size opening that allows beetles to enter while excluding bees.
- Insecticide impregnated cardboard in harborage is set back from the openings to ensure bees cannot make any contact at all.
- Compatible with silicone adhesives.
- Can be used for three months in the hive.
- Dispose of used Harborage by wrapping in paper, placing in a plastic bag and place in a garbage bin.
- No user access to the insecticide treated insert for added safety.
- Highly effective in independent trials conducted by Industry & Investment NSW, Primary Industries.
- No residues in honey as confirmed in trials performed in accord with the APVMA Guideline # 28 - Residues in honey.

Directions for Use

Simply place the APITHOR Harborage on to the hive bottom board so that it sits flat.



SCAN QR OR
CLICK HERE



Product Details

Active Ingredients:	0.48 g/kg fipronil
Insecticide Group:	Fipronil is a broad spectrum phenylpyrazole insecticide
Formulation Type:	Harborage
Pests Controlled:	Small hive beetle (<i>Aethina tumida</i>)
Pack Size	Carton 5 harbourages (APIH1001) Carton 20 harbourages (APIH1000)
Resistance Group:	2B

Performance

Considerable research by the Industry & Investment NSW, Primary Industries with financial support provided by the Rural Industries Research and Development Corporation (RIRDC) has led to the development of the APITHOR Hive Beetle Harborage that has proved to be both safe and highly effective in controlling beetles in the hive. Development was based on three equally important cornerstones:

- Selection of an insecticide that combines excellent toxicity to beetles
- A delivery system that takes advantages of the beetle's behavioural vulnerabilities
- Safety to bees and bee products.

HOPSTOP®

Spray Control for Cane Toads

A unique product, developed in Australia, that kills cane toads safely, effectively and humanely.

Key Features

If you love your pets, Australia's environment, and wildlife, then HOPSTOP is simply the best and most humane toad control product you will find. HOPSTOP is recommended by the Queensland Schools Animal Ethics Committee for euthanising toads for school laboratory studies and referenced by the RSPCA as a humane method of killing cane toads.

- ◆ Humane Spray Control for Cane Toads
- ◆ Easy to use
- ◆ Anaesthetises toads within seconds, and kills them humanely in 30-60 minutes

Performance

Three locations were selected where toad densities facilitated collection of sufficient numbers of toads across a range of sizes for use in tests. These locations were in the Mareeba and Townsville areas of far north Queensland and in the Samford Valley just west of Brisbane, in south-eastern Queensland. Selected toads had weights recorded and were then treated with either one spray (duration of approximately 2-3 seconds) or two sprays ('dual spray', comprising one short spray of 1-2 seconds, followed by another 2-3 second spray when the toad had stopped moving). Previous dose selecting trials in laboratory and field trial situations had demonstrated that large toads require a higher dose for maximum product effect.

Toads became (on average) immobilised less than one minute after treatment, progressively losing responsiveness to external stimuli thereafter, and dying about 45 minutes after treatment. All observable indications suggested that the product provides a humane method for lethal control of toads.

Tests of the dual spray method showed 100% control efficacy against a sample of toads that included large individuals of greater than 200 g weight.



SCAN QR OR
CLICK HERE



Product Details

Active Ingredients:	40 g/kg chloroxylenol
Formulation Type:	Aerosol
Pests Controlled:	Cane toads
Pack Size / Code:	300 g (CHEHS1000)
Resistance Group:	Not applicable

HOPSTOP is recommended by the Queensland Schools Animal Ethics Committee for euthanising toads for school laboratory studies and referenced by the RSPCA as a humane method of killing cane toads.

EXTERRA[®] Termite Baiting



EXTERRA[®]

Termite Colony Elimination with REQUIEM[®] Termite Bait

The World's Number One Termite Baiting System, Total Elimination of Termites - GUARANTEED.



Key Features

- ◆ **Environmentally friendly;** EXTERRA is different. A truly safe, environmentally friendly way to eliminate termites, EXTERRA uses a termite's natural instincts against them, eliminating the attacking termites AND their whole colony.
- ◆ **Total Security;** Protects from the invasion of termites, continually. Even after the colony is eliminated, EXTERRA Stations guard using the natural power of CO₂, monitoring for future invasions without the ongoing need to reapply chemicals. EXTERRA provides a long term termite solution that's easy on both you and the environment.
- ◆ **EXTERRA and Australian Wildlife Conservancy;** Partners for Life. When you install the environmentally friendly EXTERRA Termite Interception and Baiting System, you will be supporting Australian Wildlife Conservancy.
- ◆ **REQUIEM[®];** is the most palatable termite bait in the world, it is truly irresistible to termites. Housed within the EXTERRA Station, it is this greatly superior palatability that makes EXTERRA the number one system in the world.
- ◆ **EXTERRA;** is safe for you, your family, pets and nature. EXTERRA focuses on total termite colony elimination without chemicals, guaranteeing the most effective results.
- ◆ **FOCUS Termite Attractant[™];** EXTERRA is the only system that uses naturally generated CO₂ to attract the termites into the Stations to guarantee quicker interception and better results.
- ◆ **Larger Stations;** Preferred by termites to further improve performance.



Product Details

Active Ingredients:	1.0 g/kg chlorfluazuron
Insecticide Group:	Insect growth regulator
Formulation Type:	Cellulose based bait
Pests Controlled:	Subterranean termites

Performance

In-ground Stations containing hardwood timber interceptors are placed in-ground to intercept foraging termites and protect the property. Above-ground Stations are the preferred approach when termites are already active in the property. REQUIEM[™] Termite Bait is placed in the sealed station when it is installed. Above-ground Stations speed up the process of colony elimination. After the termite colony is eliminated, the Above-ground Stations are removed.

When the termites are intercepted, they are easily detected in the EXTERRA Stations. The unique (patented) design allows for termites to be seen without disturbing them. And the termites are not disturbed when the REQUIEM Termite Bait is added either. REQUIEM Termite Bait is highly palatable and consumed in preference to timber. In fact, termites can't resist REQUIEM, leading to the colony's quick demise.

EXTERRA EVER-READY®

Termite Colony Defence System

Advanced Elimination of Termite Colonies



Key Features

EXTERRA EVER-READY is the latest advance in termite colony elimination. EXTERRA EVER-READY is designed to continuously safeguard properties, always ready and able to intercept and eliminate termite colonies - from the moment of install, and every moment of every day thereafter.

EXTERRA EVER-READY is a unique, environmentally responsible solution, defending against termite infestations with its EVER-READY EZ Stations linked together, forming a complete Termite Interception Zone™, providing a protective shield right around the property.

EXTERRA EVER-READY uses the World's Number One Termite Bait, REQUIEM®, present in a natural Termite Bait Disk Sack, to provide this extended, continuously active protection.

Performance

THE EVER-READY DEFENCE SHIELD

A REQUIEM EVER-READY Termite Bait Disk Sack is placed in each EZ Station. Containing the most palatable termite bait on the market, this means the EXTERRA EVER-READY Termite Defence System is active from the start. Any termites present in the vicinity are going to be actively intercepted. The colony elimination process will commence as soon as the termites start feeding at the Station.

The worker termites will feed the REQUIEM through the entire colony, ensuring the entire colony, including the queen (and king) termites, are eliminated. There are more than a dozen, peer-reviewed, published, scientific papers from leading researchers, that confirm the efficacy and palatability of REQUIEM Termite Bait. That's clever science that other systems can't show!



EVER-READY
EZ STATION &
BAIT SACK

PRODUCT PAGE



SCAN QR OR CLICK
PRODUCT
VIDEO



VIDEO



Product Details

Active Ingredients:	1.0 g/kg chlorfluazuron
Insecticide Group:	Insect growth regulator
Formulation Type:	Cellulose-based bait
Pests Controlled:	Subterranean termites
Pack Size / Code:	4.8 kg - 20 x EZ Stations with 20 x Disk Sacks (EXEV1000) 4.8 kg - 20 x Disk Sacks for EZ Stations (EXEV1001) 4 kg - 10 x 400 g Disk Sacks for QUATERRA Stations (EXEV1002)

The EZ Stations are periodically inspected and replenished as required. EXTERRA EVER-READY provides the added security of knowing that, even if a scheduled inspection is delayed, the EZ Stations are always actively charged with termite killing bait.

After eliminating any attacking colonies, fresh REQUIEM EVER-READY Termite Bait Disk Sacks are placed in the EXTERRA EZ Stations, so they continue to defend against future invasions, offering a long-term termite protection system that's easy on the environment.



Pre-Construction Protection



TRITHOR[®] TERMITE PROTECTION

Australia's Trusted Number One Termite Security System

TRITHOR has you covered for up to 50 years!



SCAN QR OR
CLICK HERE



Key Features

- **A Physical Termite Protection System;** That deters concealed entry by termites. This is because termites can not get through TRITHOR.
- **Safer to Use;** The deltamethrin is thermally embedded deep in the inner core, ensuring it is safer to use, better for the environment and cannot leach out.
- **Actively Kills Termites too;** Unlike many other physical termite protection systems, TRITHOR contains crystals of a highly potent termite control agent so it actively kills and deters termites.
- **Flexible;** TRITHOR is a flexible termite management system that may be installed in many difficult and complicated situations including multiple penetrations, step downs, etc.
- **The ONLY proven GREEN termite protection product**
- **TRITHOR is better for your health with two peak qualifications;** The **ONLY** termite protection system that is green rate level A under the Global GreenTag Sustainability Certification Program and Platinum Health (PHD Asthma & Allergy) qualification, and better for the environment with its peak GreenRate Level A Sustainability rating.
- **Tough;** TRITHOR is the most rugged and durable termite sheet material on the market.
- **Building Code Compliant;** TRITHOR holds a CodeMark Certificate of Conformity, CM40255, confirming compliance with the Building Code of Australia Volume One BP1.1 & BP1.2, and Volume Two P2.1.1 including state addition QLD 2.1.3.
- **Guaranteed;** Up to 50-Year Termite Damage Warranty.

Product Details

Active Ingredients:	2.0 g/kg deltamethrin
Insecticide Group:	Pyrethroid
Formulation Type:	Sheet material
Pests Controlled:	Subterranean termites
Resistance Group:	3A



NOVITHOR™

The Pesticide Free Termite Protection System

Termites will be turned away
from your property every time.

Key Features

- ◆ **Pesticide Free;** The NOVITHOR System consists of three pesticide free elements which, in combination, ensure any construction type can be securely protected.
 - NOVITHOR TERMITE PROOFING RESIN
 - NOVITHOR TERMITE PROOF CEMENTITIOUS PARGE
 - NOVITHOR TERMITE PROOF FLEXI-GEL
- ◆ **Impenetrable;** Creates an impenetrable barrier to prevent the ingress of subterranean termites.
- ◆ **Pre or Post construction;** All three elements work by creating an impregnable barrier that termites cannot chew through or damage, and that is resistant to their secretions. In fact, NOVITHOR Termite Proofing Resin and NOVITHOR Termite Proof Cementitious Parge are granite-like when set.
- ◆ **Quality;** Ensystem are able to confirm its presence through analytical methods to ensure Quality Control at installations.
- ◆ **Liquid protection;** NOVITHOR Termite Proofing Resin is a liquid formulation containing a specially formulated blend of resins. It is applied to masonry mortar joints and masonry surfaces.
- ◆ **Microscopic technology;** An untreated property is vulnerable to attack by termites. Termites burrow into cracks, removing sediment as they travel and their secretions break down normal mortar over time. NOVITHOR Termite Proofing Resin locks together with sand and cement particles to form an impenetrable termite proof barrier, working at microscopic levels.
- ◆ **Termite Proof sealant;** NOVITHOR Termite Proof Cementitious Parge contains the unique resins that solidify to turn it into a granite-like barrier that is impenetrable to termites.
- ◆ **Neutral Cure Silicone;** NOVITHOR Termite Proof Flexi-Gel is a high performance neutral cure silicone sealant and adhesive, specifically formulated for termite proofing buildings during construction. It is suitable for use indoors, outdoors or in confined spaces.



SCAN QR OR
CLICK HERE



Product Details

- Formulation Type:** Consists of three pesticide free elements used in combination
- NOVITHOR TERMITE PROOFING RESIN
 - NOVITHOR TERMITE PROOF CEMENTITIOUS PARGE
 - NOVITHOR TERMITE PROOF FLEXI-GEL

Performance

The NOVITHOR Pesticide Free Termite Protection System stops termites entering a property by sealing all entry points with a granite-like barrier.

- It is used to protect:
- Mortar joints between bricks
 - Joints in concrete slabs and walls, including basement walls, CBP walls, diaphragm walls, RC walls, etc.
 - Around penetrations through concrete walls and floors
 - Around conduits and / or service pipe openings
 - Around major plant boxes
 - On retaining walls
 - On selected masonry surfaces
 - On rendered and concrete surfaces.



Hygiene Treatment



FUMITHOR™ HYGIENE

Disinfectant Smoke Generator

A highly effective and unique method for improved sterilisation, used extensively throughout Europe. It's a low toxic, dry smoke disinfectant with potent bactericidal, virucidal and fungicidal properties, the perfect hygiene solution for modern industry and society.



Key Features

- Uniquely uses two different active ingredients for improved results.
- A broad-spectrum microbicide, effective against all vegetative bacteria, fungi, and viruses, it is also sporicidal.
- Optimal effective use of small quantities of disinfectant which minimises any impact on the environment while maximising results.
- Disinfectant is deposited everywhere (vertical, horizontal and underside of horizontal surfaces) which ensures a more thorough treatment.
- Easy to treat inaccessible areas - roofs, false roofs, nooks and crannies, etc.
- Lower operator and worker exposure to disinfectants makes it safer.
- It does not increase the humidity of the treated rooms meaning fungal growth is not encouraged.
- Effective treatment of any enclosed area.

Product Details

Active Ingredients:	35 g/kg glutaraldehyde 200 g/kg ortho-phenylphenol
Formulation Type:	Smoke generator
Pack Size / Code:	400 g generator treats 800 - 1600 m ³ , 6 x 400 g (CHEFS1002)
	100 g generator treats 200 - 400 m ³ , 6 x 100 g (CHEFS1001)
	25 g generator treats 50 - 100 m ³ , 6 x 25 g (CHEFS1000)

Pests Controlled:

Viruses including: avian reovirus, avian rotavirus, infectious bronchitis, Pseudorabies virus, infectious bursal disease, avian influenza, Newcastle disease, porcine reproductive respiratory syndrome, hog cholera = HC, avian laryngotracheitis, Marek's disease virus, human Corona virus.

Bacteria including: *Aeromonas punctata*, *Bacillus mycoides*, *Bacillus subtilis*, *Desulfovibrio desulfuricans*, *Enterobacter aerogenes*, *Escherichia coli*, *Leuconostoc mesenteroides*, *Proteus mirabilis*, *Pseudomonas fluorescens*, *Pseudomonas aeruginosa*, *Staphylococcus aureus*, *Listeria monocytogenes*, *Mycobacterium tarrae*, *Propionibacterium acnes*, *Salmonella choleraesuis*, *Bacillus cereus*, *Legionella pneumophila*, *Klebsiella aerogenes*, *Klebsiella pneumoniae*, *Desulphovibrio desulphuricans*.

Yeasts & fungi including: *Candida albicans*, *Candida krusei*, *Rhodotorula mucilaginosa*, *Rhodotorula rubra*, *Saccharomyces bailii*, *Saccharomyces cerevisiae*, *Torula utilis*, *Alternaria tenuis*, *Aspergillus flavus*, *Aspergillus niger*, *Aspergillus terreus*, *Aspergillus ustus*, *Chaetium globosum*, *Mucor racemosus*, *Penicillium brevicale*, *Rhizopus stolonifer*, *Thiopyton mentagrophytes*, *Thiopyton rubrum*, *Stachybotrys atra*, *Penicillium funiculosum*, *Trichoderma viridae*.

SCAN QR OR
CLICK HERE



Performance

Glutaraldehyde is an organic compound that is highly effective as a disinfectant/sterilant and widely used in medical and surgical fields. Ortho-phenylphenol is an organic compound and a powerful biocide with strong bactericidal and fungicidal properties. It is commonly used as a general surface disinfectant in households, hospitals, nursing homes, farms, laundries, barber shops, and food processing plants. Together they provide a complete solution to your needs for a germ free environment.

FUMITHOR HYGIENE is ideal for enclosed areas in ANIMAL HEALTH poultry, egg production, animal breeding facilities, kennels; PUBLIC HEALTH health institutions and premises, medical centres, clinics, surgery areas, ambulances, saunas, gyms, pools, schools, hotels, cinemas, theatres, libraries, warehouses, offices, homes; FOOD INDUSTRY bakeries, mills, slaughter houses, food processing areas, food and vegetable storage; CROP PROTECTION post-harvest, silos, warehouses, ships, greenhouses, cold stores, containers, etc.

AVITHOR™ Bird Control



AVITHOR™ FLOCK OFF

Innovative Bird Control

A revolutionary technology that stops birds from landing on structures
IMMEDIATELY & PERMANENTLY

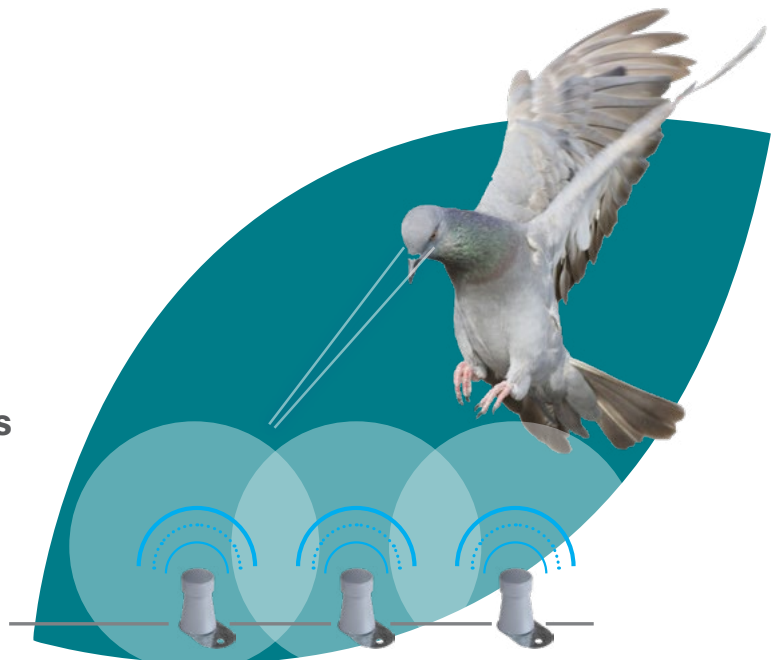
Key Features

FLOCK OFF, an innovative solution in bird control, was designed to address the challenges of bird infestations in a humane and effective way, utilising advanced science and intelligent mechanisms to safeguard your premises.

Conceived by a Quantum Physicist, and developed by experts in Ornithology and Entomology, FLOCK OFF uses applied science to disrupt the migratory physiology of birds.

Birds decode information about the Earth's magnetic field through a protein in their retina and use this data to guide and direct their flight. FLOCK OFF generates silent, invisible electromagnetic pulses, which disrupt their ability to navigate and land. Birds are deterred as they approach the system and turn away.

- **SAFE & HUMANE:** The FLOCK OFF system does not emit problematic radio frequency (RF) nor ultrasound waves. It operates at 2,500 Volts AC at 0.021 amps, has a power consumption of 25 Watts and an output frequency in the audio frequency (AF) spectrum. This frequency is converted into an electromagnetic pulse and is not audible or harmful in any way. It will never interfere with electrical systems, Wi-Fi, electronic communications or other systems. Birds and people should NEVER be harmed by FLOCK OFF.
- **PROVEN HUMANE, GREEN & EFFECTIVE:** FLOCK OFF was recently studied by the highly rated University of Arizona's College of Agriculture and Life Sciences Department of Entomology in conjunction with Oregon State University. Their published findings show a virtually 100% efficacy rate for bird abatement while simultaneously doing NO harm to the birds. FLOCK OFF is a 100% eco-friendly solution!
- **CERTIFICATION:** The FLOCK OFF system has obtained FCC, Industry of Canada, CE and UKCA compliance that validate its compliance with health and safety standards for safe operation around humans and other electronic devices. FLOCK OFF is registered under the Australian Electrical Equipment Safety System (EESS).



Product Details

STANDARD KIT COMPONENTS	IP 65 Power Control Unit 160 m Stainless Steel Wire 25 m Double Insulated Wire 100 Capacitors - Available in Roof, Clip, or Magnetic style 20 Connection Rings 20 Connector Springs 4 Warning Stickers 2 Year Manufacturer Warranty
Pests Controlled:	Works for ALL BIRDS

Performance

FLOCK OFF creates a low-intensity magnetic pulse which directly affects the bird's navigational ability. Birds will not land and divert elsewhere. FOREVER.

Each FLOCK OFF system can cover up to 180 linear metres.

AVITHOR™ BIRD AWAY

Visual and Olfactory Bird Repellent

A totally new concept in the effective management of pest bird species.

Key Features

- ◆ **100% natural and pesticide free;** It is discreet, non-harmful and highly effective at repelling birds from buildings and other structures.
- ◆ **Flame Shield Gel Technology™;** Reflects light as a sparkle in the UV-A light spectrum. Since birds see light in the UV-A spectrum, they see the sparkle which resembles flames. This virtual 'flame shield' visually deters the birds from landing.
- ◆ **Herbal Extracts;** The olfactory component of the gel comes into play when birds try to land. Bird Away contains herbal extracts in a natural product base. If the bird gets close, it is repelled by the strong herbal odour.
- ◆ **Non-toxic and non-harmful to birds;** Birds do not make any contact with the gel at all. It works purely by visual and olfactory cues. The gel is discreetly applied in UV-stabilised, low-profile AVITHOR Dishes for placement. It does not kill or trap birds, but immediately changes their behaviour so that they fly away. Birds will completely desert a habitat they have been using for years once it is placed.
- ◆ **Works indoors or outside;** And has been tested successfully against pigeons, common mynahs, starlings, sparrows, swallows, willie wagtails, gulls, crows and corellas; with birds deterred for up to three years or more.



SCAN QR OR
CLICK HERE



Product Details

Active Ingredients:	30 g/kg peppermint oil, 50 g/kg white pepper.
Insecticide Group:	Herbal
Formulation Type:	Gel
Pack Size / Code:	15 x 15 g Dishes (AVIBA1005)
Resistance Group:	Not applicable

Performance

All components appear on the United States Food and Drug Administration's (FDA) lists of products that are Generally Regarded As Safe (GRAS); and are listed in the European Pharmacopoeia Standards, (Europe's legal and scientific benchmark for pharmacopoeial standards, designed to deliver high quality medicines in Europe and beyond), for direct application to, or consumption by people.

AVITHOR™ NET

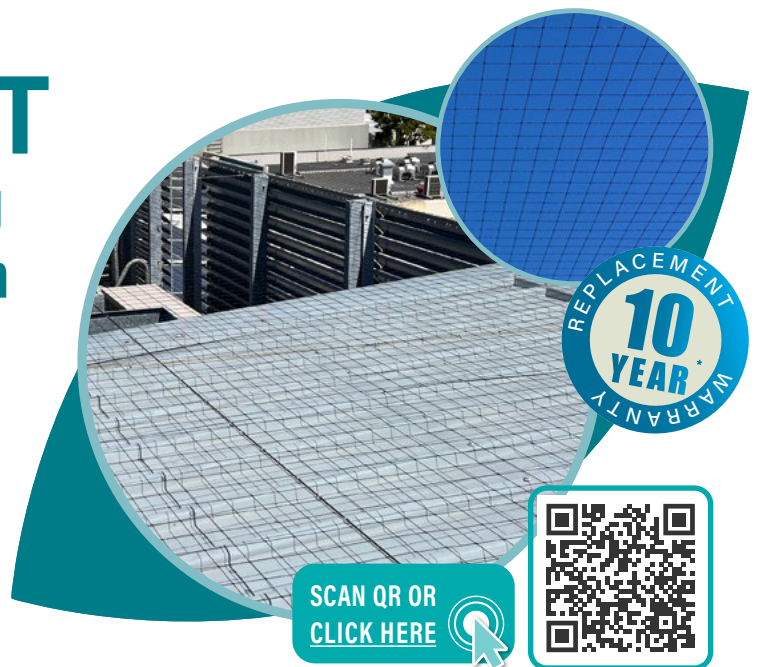
Cost Effective, Long Lasting Anti-Bird Protection System

Key Features

AVITHOR NET comes in black, used in most situations; or by special order, stone colouration for historical buildings.

In Australia it is available in 50 mm (for gulls and pigeons) and 19 mm (for starlings and sparrows) mesh sizes. In use it is almost invisible. Made of UV stabilised polyethylene it is chemically inert, rot proof, and highly resistant to weathering and a wide range of chemicals.

- AVITHOR NET is:
- ◆ Long-lasting
 - ◆ Ecological
 - ◆ Inconspicuous
 - ◆ Cost effective



SCAN QR OR
CLICK HERE

Pack Size / Code:	AVIN1001, 19 mm, 10 x 10 m
	AVIN1002, 19 mm, 10 x 20 m
	AVIN1033, 19 mm, 10 x 5 m
	AVIN1020, 19 mm, 20 x 20 m
	AVIN1003, 50 mm, 10 x 20 m
	AVIN1004, 50 mm, 10 x 10 m
	Other sizes available on special order.

AVITHOR DADDI LONG LEGS™

Bird Deterrent System

Key Features

Protects against most large bird species in low or medium pressure areas.

The AVITHOR DADDI LONG LEGS™ Bird Deterrent is designed to prevent birds from landing in hard to protect areas. Ideal for open spaces such as flat roofs or air conditioning units, as well as other situations such as domed or pointed roof peaks, and other areas where alternatives such as spiking or netting are too difficult or not possible.

The thin, stainless steel rods rotate in the breeze and wave menacingly, interfering with birds as they attempt to land. Designed to be as discrete as possible DADDI LONG LEGS is almost invisible from a distance of 20 m or more. Being inconspicuous the DADDI LONG LEGS can be installed in high traffic or public areas with little risk of it causing offense by its appearance.



SCAN QR OR
CLICK HERE

Sizes Available	1.2 m / 1.8 m / 2.4 m
------------------------	-----------------------

The DADDI LONG LEGS is for the safety conscious, the stainless steel rods are fitted with plastic tips to ensure no injury to birds, humans or other animals.

AVITHOR™ E-TRACK

Electrical Bird Deterrent System

Bird-proof any building with the bird-safe AVITHOR E-TRACK

Key Features

AVITHOR E-TRACK has changed the face of the bird control industry. One product is able to protect a wide variety of surfaces from all bird species, while at the same time being virtually invisible, and incredibly durable.

AVITHOR E-TRACK is a comprehensive family of parts that make up a fully integrated system to bird-proof any building. Special connectors, wires, charger units and the track itself can be customized to protect both regular and irregular shaped surfaces. E-TRACK will provide total exclusion of all bird species, even in high pressure roosting situations; while at the same time being virtually invisible, and incredibly durable. At only 6mm high, AVITHOR E-TRACK is even hard to see close-up once installed.

One row of E-TRACK can protect the same width ledge as multiple rows of other products. Labour and material costs are therefore much less. Often just one row on the outer edge is enough! It is simple to install and Ensystex provides full hands-on training as required. E-TRACK is a humane system and does not harm or injure the birds. AVITHOR E-TRACK is long-lasting since it is made from UV-stabilized virgin PVC, and stainless steel, so it will be in service far longer than its five-year warranty.

Performance

AVITHOR E-TRACK is a comprehensive family of parts that make up a fully integrated system.

Bird-proofing any building is possible. Can be installed on any surface where total exclusion is the goal, and low visibility is key; parapets, roof peaks, beams, ledges. Special connectors, wires, charger units and the track itself can be customized to protect both regular and irregular shaped surfaces.

AVITHOR E-TRACK protects straight ledges, and curves easily to protect sign letters. Jumpers snap quickly to the track, making it easy to power multiple tracks. A charger unit mounts to the building and sends intermittent power down the two conductors. E-Quick Connectors are used every 15 m, or as required. E-Quick Corner Connectors can be curved to any angle.



* CONDITIONS APPLY

SCAN QR OR
CLICK HERE



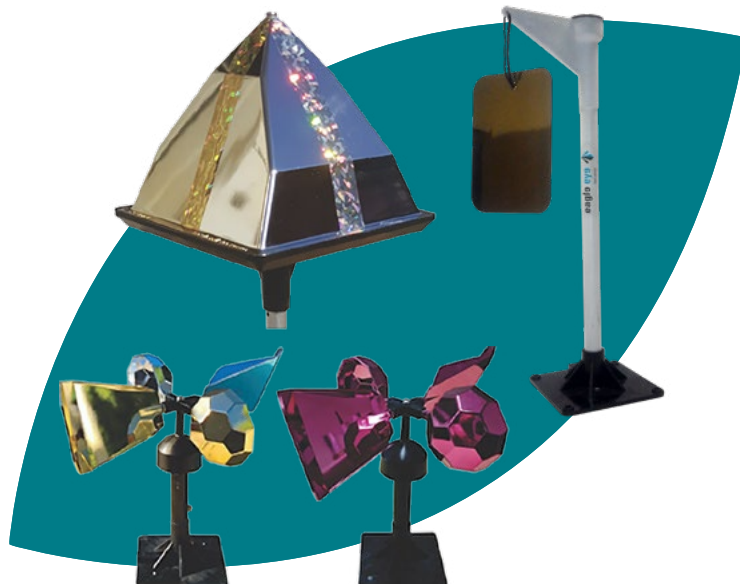
Product Details

Materials / Size:	UV-stabilized PVC and Stainless Steel
Pests Controlled:	All species of bird including sparrows, starlings, pigeons, gulls, seagulls, etc. with all pressure levels.
Pack Size / Code:	<p>AVIT1001 15 m Grey (Available in Stock)</p> <p>AVIT1000 15 m Beige (Special order)</p> <p>AVIT1055 15 m Black (Special order)</p> <p>AVIT1054 15 m Brick red (Special order)</p>

AVITHOR™ EAGLE EYE & PRO-PELLER

Effective Open Space Bird Control

The AVITHOR EAGLE EYE bird chaser is the most effective open area bird deterrent in the world today.



SCAN QR OR CLICK
PRODUCT
VIDEO



SCAN QR OR CLICK
PRODUCT
VIDEO



EAGLE EYE

Protects against most bird species in low to medium pressure areas in combination with other bird management systems.

The AVITHOR EAGLE EYE bird scarer uses reflected light beams that flash at various angles from the rotating Eagle Eye units to disorientate and irritate the birds.

The EAGLE EYE is fitted with a 12 V DC motor to make it turn at a specific speed, reflecting the light beams at constant intervals.

The EAGLE EYE functions optimally in direct sunlight. Artificial light can be used for indoor application or shady areas but is not as effective as direct sunlight and more units will be needed to cover the same area.

The reflective surface of the EAGLE EYE is manufactured from durable ABS plastics and will not break even during hailstorms. Animal welfare institutions are in favour of the EAGLE EYE because it is not harmful to any animals or the environment.

PRO-PELLER

The PRO-PELLER was designed to provide a durable, cost effective, reflective unit to complement the EAGLE EYE system. The PRO-PELLER rotates by means of it's double bearing system and the wings have been designed to rotate with the slightest of breeze. The PRO-PELLER is totally wind-driven and no power is needed.

The wings are made out of aluminium and the mounting bracket is 304-grade stainless steel.

This ensures longevity, even in coastal environments. The unit requires servicing every 4 months to ensure optimal reflections. The PRO PELLER carries a 2 year guarantee.

It is available in two colour variants: Silver and Gold for land birds, or Red and Gold for marine birds.

The PRO-PELLER is intended to be used in conjunction with the EAGLE EYE system. Each PRO-PELLER has an effective radius of 15 m. Place one unit every 30 m in large open areas.

Always place the units in direct sunlight and in areas with a light breeze. Place the EAGLE EYE units on the highest points of the building and near the key problem areas. The PRO-PELLER is intended to be used in conjunction with the EAGLE EYE system every 30 m between the EAGLE EYE units.

AVITHOR™ E4 DETERRENT SPIKES

Deters birds from landing or nesting on protected surfaces.

Key Features

Protects against most bird species in medium or high pressure areas.

Once fitted, AVITHOR E4 DETERRENT SPIKES form a virtually invisible barrier to deter birds from landing or nesting on the protected surfaces, while causing them no harm.

Protects all types of buildings, any type of surface. Ledges, roosting spots, chimneys, windows, etc.

Effective protection against pigeons, gulls, sea gulls and other medium to large sized birds.

Major benefits of AVITHOR E4 DETERRENT SPIKES include;

- Easy to fit
- Economical
- Discreet
- Proven success

Performance

With an effective protection width up to 160 mm they are suited to protect against pigeons, gulls, sea gulls and other medium to large sized birds.

AVITHOR E4 DETERRENT SPIKES are made of the highest-quality Stainless Steel, with a Spike Diameter of 1.3 mm and a UV Stabilized Polycarbonate Base.

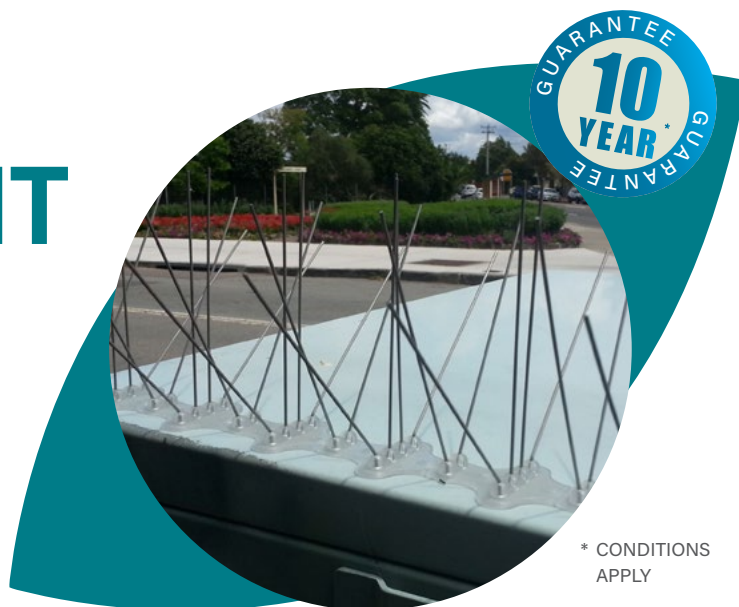
Spike dimensions are: 85 mm Low Height, 125 mm High Height, 130 mm Width, 500 mm Length.

They are jointly pliable to avoid injuring birds whilst preventing landing.

For site preparation we recommend cleaning first with AVITHOR GUANAWAY™. Remove all bird droppings, dust, dirt and grease and allow surfaces to dry.

Secure with AVITHOR AVIS2001 Selffixing Silicone Sealant. If required, apply a primer on porous surfaces.

Alternatively, the spikes can be secured with screws or nails.



* CONDITIONS APPLY

SCAN QR OR
CLICK HERE



Product Details

Materials / Size: Spikes in stainless-steel / Steelinox® / Steelinox®+ Highest-quality Stainless Steel, Spike Diameter 1.3 mm; with UV Stabilized Polycarbonate Base.
85 mm Low Height
125 mm High Height
130 mm Width
500 mm Length

AVITHOR DETERRENT SPIKES are manufactured using non-corroding materials.

Pests Controlled: Most bird species

Pack Size / Code: Carton contains 120 x 500 mm runs (total 60 m), weight approx 12 kg.

AVITHOR™ GUANAWAY

Heavy Duty Alkaline Cleaner for the Cleanup of Bird Waste

Complementing Ensystemx's extensive range of bird control products.



Key Features

AVITHOR GUANAWAY provides effective and safer cleaning of surfaces for bird management programs and can be used as part of any bird management program.

AVITHOR GUANAWAY controls micro-organisms associated with the clean-up of bird waste.

AVITHOR GUANAWAY complements Ensystemx's extensive range of bird control products, including AVITHOR E4 Bird Spikes, AVITHOR Net, AVITHOR E-Track, AVITHOR Spider, and AVITHOR Eagle Eye.

Performance

AVITHOR GUANAWAY is a heavy duty alkaline cleaner disinfectant, designed specifically for high risk areas. It is ideal for heavy duty cleaning and disinfecting, the removal of bird droppings, the treatment of dead birds, collected nests and other such materials, and cleaning contaminated equipment e.g. boots, goggles, gloves, shovels and bins.

AVITHOR GUANAWAY is suitable for use in and around Commercial, Industrial, Rural and Residential Buildings.

AVITHOR GUANAWAY is a powerful alkaline cleaner degreaser which also neutralises the acidic by-products associated with bird droppings. This reduces corrosion to stone work and increases safety by removing the slippery greasy waste.

SCAN QR OR
CLICK HERE



Product Details

Active Ingredients:	12 g/L Didecyldimethylammonium Chloride
Formulation Type:	Heavy duty alkaline cleaner
Pack Size / Code:	1 L



RODENTHOR® Rodent Control



RODENTHOR[®] DIGITAL

Premium Back to Base Monitoring System

Permanent and intelligent
remote monitoring of rodents.

Key Features

Change from manual inspections to automatic, more efficient, greener inspections.

With a goal towards advancing food security and more sustainable pest management practices, RODENTHOR DIGITAL is powered by the internationally acclaimed GreenTrapOnline (GTO) system to provide intelligent, 24/7 monitoring of rodents.

RODENTHOR DIGITAL is constantly monitoring and notifying you of rodent activity and catches in real-time. This allows prompt action to be taken, speeding up root cause analysis and thus reducing the risk of infestations growing.

Digital solutions allow professional pest managers to receive an early warning of pest activity and provide quick treatment to avoid risks of infestation, reduce the use of rodenticides, and reduce labour costs.

Built on LoRa (long range private network) communication from the sensors to the GT Gateway. The GT Gateway can run any number of sensors. The GT Gateway connects over the 4G network, ensuring the widest coverage and high data security.

- 24/7 – 365 automatic & permanent monitoring.
- Early warning & opportunity for quick treatment, also speed up root cause analysis.
- Avoid risks of infestation and reduce the use of rodenticides.
- Immediate alarm with rodent activity from both mice & rats.
- Plug & play – easy to install and operate.
- Unique multi-sensor capabilities.
- Avoid frequent inspections of empty bait stations.
- Monitor difficult to reach and high security areas.
- Less business disruption.
- Delivers documentation, Intelligent reporting, data analysis, and improved audit readiness.



SCAN QR OR
CLICK HERE



Product Details

GT SENSOR

ABS plastic
60 x 64 x 22 mm
57 g
LoRa: 433 mHz
Replaceable 3.6 V Lithium AA
Battery life up to 7 years
External antenna
Temperature: -20 to +85°C

GTO GATEWAY

ABS plastic
146.31 x 95.91 x 38 mm
163 g
4G External Communication
LoRa: 433 mHz to Sensor
USB for internal modem (included),
and LAN for internet
100 - 240 V AC power adapter
External antenna
Temperature: -20 to +85°C

Performance

RODENTHOR DIGITAL has plug-and-play simplicity, easy set-up, and great flexibility. It's as simple as 1, 2, 3, 4...

1. Monitor & Detect: The multi-sensor system can detect rodent movements, as well as detecting snap trap releases.

2. Send & Notify: When the sensor detects rodent activity it sends an email notification immediately, so appropriate action can be taken.

3. Document & Report: All rodent activity is securely stored on the webportal, documented, and analyzed.

4. Treat: Use your preferred bait station, bait, and traps.

GORILLA RODENT TRAPS & NARA® LURES

World's Toughest & Most Humane Traps with Allergen-Free Monitor

Many food standards prohibit the use of anticoagulants for monitoring purposes. Most common baits are prone to mould formation in damp areas. NARA BLOCS and STICS solve these problems and GORILLA TRAPS, with CE certification, provide a unique humane control solution.

Key Features

- ◆ **Strongest mouse traps;** Bait socket made especially for NARA® STIC. High quality springs delivering most humane capture of mice.
- ◆ **Most humane rat trap;** Strongest springs available for humane kill of rats. Compliant with BANANA adapter for eMitter BEEP.
- ◆ **Bait;** socket made especially for NARA® STIC.
- ◆ **Emitter Beep;** Pest control often requires traps to be placed in difficult to reach rodent harbourages that are costly to inspect and the client needs instant notification of a rodent capture. One easy answer is the eMitter BEEP. A super simple but highly reliable and effective audio warning sounds when a rodent trap has potentially caught a rodent.
- ◆ **Traps fit most Stations;** Place traps stand alone or in a RODENTHOR Station.
- ◆ **NARA STICS;** are designed to fit into the GORILLA TRAPS. NARA STICS have from 3 months up to 12 months long lasting efficacy in a variety of different aromas. Professionals now rely upon NARA STIC, the most hygienic and long-lasting way to bait traps. No cleaning up afterwards and no fast decrease of efficient monitoring with up to 12 months of non-stop activity.
- ◆ **NARA BLOCS;** monitor for rodent activity and determine the rodent species present. NARA BLOCS are the first allergen free non-toxic rodent monitor. Allergen-management has become a major topic in many food production companies. Food-based monitoring blocks have a critical disadvantage as they serve as food for rodents, helping them to survive and increase the risk of rising



Product Details

Pests Controlled:	Rats & Mice
Product / Code:	GORILLA TRAP - Rat (RDTF1011) GORILLA TRAP - Mouse (RDTF1012) NARA BLOC Choco-Nut Pack 20 (RDTF1009) NARA BLOC Fish Pack 20 (RDTF1006) NARA BLOC Meat Pack 20 (RDTF1007) NARA BLOC Vanilla Pack 20 (RDTF1008) NARA STIC Choco-Nut Pack 100 (RDTF1005) NARA STIC Fish Pack 100 (RDTF1002) NARA STIC Meat Pack 100 (RDTF1003) NARA STIC Vanilla Pack 100 (RDTF1004) eMitter BEEP (RDTF1013)

reproduction. Moreover, they are prone to mould formation in damp areas and are often infested by non-target organisms, e.g. flour beetles, cockroaches, ants and snails. This simply makes it impossible to determine the rodent species present. With NARA BLOCS from Ensystem you can identify the species present according to visible bite marks on the BLOCS. In an idealised rodent management program, we should be minimising the use of toxic baits. Only after the determination of rodent activity should rodenticides be used. Thus NARA BLOCS should be your product of choice for rodent maintenance programs. NARA BLOCS come in a range of flavours and last up to 12-months..

Performance

The safest most effective options for the food industry.

NARA[®] SPRAY

Attractive Spray - Monitoring for Rats & Mice

Spray NARA Spray onto your stations and lay a trail towards them in order to improve your results.

Key Features

- ◆ **Supports non-toxic monitoring;** By allowing you to leave a trail to lure rodents to traps and mask the smell of plastic stations.
- ◆ **Highly attractive;** For all commensal rodents.
- ◆ **Beneficial monitor;** Can be used to spray any station to mask smells of plastic or human odours and make the stations more attractive.
- ◆ **With handy holster and belt;** So you can always have it with you when doing rodent work.

Performance

Rodent stations and traps are made of plastic. Plastic has its own chemical smell. If you hold a lighter to anything plastic it smells extremely toxic. This can be compared to what rodents smell when entering a rodent station. Rodents sense of smell is many times better than humans.

NARA Spray seals away the plastic smell, making stations attractive to rodents. The scent lasts around 2-3 months and needs to be renewed, but after repeated application it will slowly soak into stations. Renewing the scent every few months adds fresh attraction to stations luring in new generations of pests.

NARA Spray can also be used to spray a bait-line towards stations, to lure rodents from the bushes or holes into the station. The theory comes from hunting, where hunters drag a dead rabbit to a trap to catch foxes. Scientific trials showed that rodents are curious and follow the smell over large distances, even up to 40 m, with their sensitive noses - like an irresistible cookie trail.

The spray is not only an aroma scent, but it also feeds them with a nutritious vegetable oil, so they feel the desire for more. It consists of 100% vegetable rapeseed oil which is super nutritious for rats and mice and has its own natural scent that is refined with an added meat/beef aroma mixture.



SCAN QR OR
CLICK HERE



Product Details

Pack Size / Code:	NARA Spray Meat Each (RDTF1001)
--------------------------	---------------------------------

MUSKIL[®] DUAL ACTIVE RODENTICIDE BLOCKS

A Generational Breakthrough in
Rodenticide Technology Kills Rats &
Mice Faster Than Other Rodenticides

First rodenticide to include fluorescent
tracking with palatability optimised to the
the rodent's senses of sight, smell and taste.

Key Features

Contains 15 g Blocks so your bait goes further.

- ◆ **Two actives;** MUSKIL blends two different Second Generation Anticoagulant Rodenticides (SGARs), difenacoum and bromadiolone, together to create a rodenticide that outperforms any other product in the market in terms of speed of kill and reduced risk to pets.
- ◆ **MUSKIL has also been uniquely formulated;** To provide improved palatability. MUSKIL's FLUO-NP Technology helps overcome Bait Shyness and allows you to track rodents and bait consumption for improved monitoring and higher standards of safety in HACCP managed food establishments.
- ◆ **Power from synergy;** By combining two actives we create a unique product that kills the toughest rodents, including those resistant to other anti-coagulant rodenticides. The two actives combine together to create a synergistic effect with each dynamically intensifying the effects of the other, to create a more potent solution than either alone, yet at the same time achieving reduced risk to people and pets.
- ◆ **Cost Effective;** MUSKIL kills rodents faster, so often less bait is consumed, which helps reduce the costs of your management programs. Plus the neophobic response to MUSKIL is much lower than with traditional baits using standard dyes, therefore bait is accepted more quickly, more palatable and more efficient in use.
- ◆ **FLUO-NP Technology;** is an abbreviation of Fluorescent No Phobia. The No Phobia aspect is in reference to how MUSKIL overcomes the rodent's natural neophobia, which relates to the commonly observed behaviour of bait shyness, where rodents are reticent to feed on a bait. Numerous field trials and commercial results have proven that MUSKIL can defeat bait shyness.



SCAN QR OR
CLICK HERE



Product Details

Active Ingredients:	0.025 g/kg bromadiolone, 0.025 g/kg difenacoum
Insecticide Group:	Hydroxycoumarins
Formulation Type:	All weather block
Pests Controlled:	Rats and mice
Pack Size / Code:	10 kg (RDTB1173) 3 kg (RDTB1032)

Performance

The FLUO-NP contributes to the primary bait acceptance of MUSKIL, thereafter, the formulated ingredients enhance the palatability. MUSKIL has been prepared specifically for Australian and Asian markets and provides improved palatability for our local rats and mice, especially the black rat (*Rattus rattus*). MUSKIL employs high quality aromatic ingredients to entice rodents to the bait coupled with high grade proteins to ensure optimal feeding.

All rodenticides have added colour dyes to deter feeding by birds and other animals with full colour vision. However all the usual dyes used in rodent baits can be detected by rodents and do slightly deter feeding. University trials have shown that the FLUO-NP dyes used in MUSKIL are non-detectable to rodents providing for further improvements in palatability.



MUSKIL[®] SOFT BAIT WITH TWO ACTIVES RODENTICIDE

**Faster Kill - Super Potent -
Kills Rats & Mice Faster**

Higher moisture content creates
increased palatability.

Key Features

Contains 15 g Sachets so your bait goes further.

- **Two actives;** MUSKIL blends two different Second Generation Anticoagulant Rodenticides (SGARs), difenacoum and bromadiolone, together to create a rodenticide that outperforms any other product in the market in terms of speed of kill and reduced risk to pets.
- **MUSKIL has also been uniquely formulated;** An economical and extremely potent 15 g moist pasta bait, produced to be more palatable than block baits - killing rodents faster.
- **Premium palatability;** Porous teabag sachet allows the release of aromatics to lure rodents effectively. Combines vegetable fats, grains and proteins in a way that is exceptionally attractive to rats and mice. Much lower neophobic response than traditional baits ensures fast acceptance of MUSKIL SOFT BAIT.
- **Power from synergy;** By combining two actives we create a unique product that kills the toughest rodents, including those resistant to other anti-coagulant rodenticides. The two actives combine together to create a synergistic effect with each dynamically intensifying the effects of the other, to create a more potent solution than either alone, yet at the same time achieving reduced risk to people and pets.
- **Cost Effective;** Small 15 g sachets help reduce the costs of your management programs, allowing up to twice as many bait placements as other products. One sachet is enough to kill up to five rats. Sachets can be placed on rods in a bait station.
- **FLUO-NP Technology;** is an abbreviation of Fluorescent No Phobia. The No Phobia aspect is in reference to how MUSKIL overcomes the rodent's natural neophobia, which relates to the commonly observed behaviour of bait shyness, where rodents are reticent to feed on a bait. Numerous field trials and commercial results have proven that MUSKIL can defeat bait shyness.

FLUO-NP[™]

UV TRACKING TECHNOLOGY



USING SUSTAINABLE
RECYCLED PACKAGING

SCAN QR OR
CLICK HERE



Product Details

Active Ingredients:	0.025 g/kg bromadiolone, 0.025 g/kg difenacoum
Insecticide Group:	Hydroxycoumarins
Formulation Type:	Soft pasta bait in 15 g edible sachet
Pests Controlled:	Rats and mice
Pack Size / Code:	10 kg (RDTB1174) 3 kg (RDTB1037)

Performance

The MUSKIL recipe uses high quality aromatic ingredients to entice rodents to the bait coupled with high grade proteins to ensure optimal feeding. This fast-acting, moist pasta-based bait is irresistible to rodents. A single edible sachets allows the release of the carefully selected aromas which draw rodents to the bait. They then readily feed on the high protein bait which provides both a high quality food source, and moisture.

Our 10 kg carton contains 667 sachets. MUSKIL SOFT BAIT is the obvious choice for fast, cost-effective rodent control.

One of the most remarkable attributes of MUSKIL is that whilst displaying faster kill of rodents, it displays a lower toxicology profile against non-target animals including family pets, when compared to most other rodenticide baits.



RODENTHOR® BLOCK RODENTICIDE

A True Single Feed Rodenticide

For use in all situations, against
all pest species of rats & mice.



Key Features

Contains 15 g Blocks so your bait goes further.

- ◆ **Ready to use block bait;** Suitable for use in damp or dry situations in and around industrial, commercial, public services, agricultural and domestic buildings.
- ◆ **Works in the toughest situations;** Controls rodents resistant to other anticoagulants, including warfarin, coumatetralyl and bromadiolone.
- ◆ **Clever design;** The block has been designed with a central hole for easy mounting in various situations and several sharp corners to increase its attractiveness to rodents by providing numerous gnawing edges.
- ◆ **Economical block size;** The 15 g block allows more placements, reduces wastage and provides for more effective control of rats and mice.
- ◆ **Irresistible to mice and rats;** This highly palatable extruded block uses the highest quality ingredients to ensure it is irresistible to rats and mice.

SCAN QR OR
CLICK HERE



Product Details

Active Ingredients:	0.05 g/kg brodifacoum
Insecticide Group:	Hydroxycoumarin
Formulation Type:	All weather block
Pests Controlled:	Rats and mice
Pack Size / Code:	10 kg (RDTB1052) 3 kg (RDTB1008)

Performance

RODENTHOR Block Rodenticide is a tough, efficient eliminator of rats and mice. The extruded block has effective weather resistance to make it survive in most environments. One feed is all that is required to kill a rodent. The 15 g block uses the most potent rodenticide on the market, brodifacoum, and is optimised to tackle rodents without using excessive bait, so your purchase goes further.



RODENTHOR® SOFT BAIT

Fatal Attraction

Irresistible to rodents, and a single feed is lethal to every rodent, every time.

Key Features

Contains 15 g Sachets so your bait goes further.

- ◆ **Made from the finest ingredients;** RODENTHOR's soft pasta base is by far the most palatable bait presentation for rodents.
- ◆ **Each 15 g sachet is enough to kill a rat;** Whilst ensuring your purchase goes further.
- ◆ **Attractive;** The edible sachets allow the release of the carefully selected aromas which draw rodents to the bait. They then readily feed on the high protein, moist pasta-based bait which provides both a high quality food source, and moisture.



SCAN QR OR
CLICK HERE



Product Details

Active Ingredients:	0.05 g/kg brodifacoum
Insecticide Group:	Hydroxycoumarin
Formulation Type:	Soft paste bait in an edible sachet
Pests Controlled:	Rats and mice
Pack Size / Code:	10 kg (RDTB1053) 3 kg (RDTB1054)

Performance

RODENTHOR Soft Bait is a tough, efficient eliminator of rats and mice. One feed is all that is required to kill a rodent. The 15 g bait uses the most potent rodenticide on the market, brodifacoum, and is optimised to tackle rodents without using excessive bait, so your purchase goes further. Due to it being the most palatable bait formulation on the market, this should always be considered as your first choice for rodent baiting programs, especially at difficult sites.



RODENTHOR® GEL

With New Lipogel Technology™

A new dimension in Rodenticide Baits.

Key Features

LIPOGEL TECHNOLOGY allows us to blend the finest food ingredients, together with specially derived Lurent Aromatics™, to create a gel bait which retains high qualities of long-term stability, attraction, moisture retention and palatability.

RODENTHOR® GEL Rodenticide brings a new dimension to the rodenticide market through its innovative formulation exploiting Ensystem's pioneering LipoGel Technology™. This technology allows us to blend, in a balanced and stable manner, various vegetable fats and proteins, enriched with cereals and sugars, together with specially derived Lurent Aromatics™, to create a soft, creamy bait which retains high qualities of long-term stability, attraction, moisture retention and palatability.

Since rats in particular are driven more by scent than taste, RODENTHOR GEL contains a unique blend of distinctive aromas that Norway and roof rats find exceptionally inviting. These aromas draw the rodents to the LipoGel placements.



SCAN QR OR
CLICK HERE



Product Details

Active Ingredients:	0.5 g/kg brodifacoum
Pesticide Group:	Rodenticide
Formulation Type:	Bait
Pests Controlled:	Rats and mice
Pack Size / Code:	300 g caulk tube (RDTG1000)

Performance

Brodifacoum was selected as the active since it is the most potent of agent for killing rats and mice. It is a true single-feed active.

THE BEST ITALIAN CUISINE for Maximum Palatability. RODENTHOR GEL is produced in our state-of-the-art rodent food production facility in Italy, using only the finest food ingredients, including durum wheat, to our exacting Australian specifications. This is one of the largest rodent food production facilities in Europe. Of course, RODENTHOR GEL is blended specially to suit the taste palette of Australian rats and mice, which you may be surprised to learn are quite different to those of their European and American 'cousins'!

RODENTHOR[®]

Rat & Mouse Stations

All Stations can be personalised with your logo printed directly onto the Station.



Bora Station

HIGH-DOMED STATIONS IS PERFECT WHEN USING TRAPS FOR RATS.

This Station is ideally suited for use with our high-power, humane GORILLA TRAPS and features a child-resistant, double lock system, two horizontal wires to hold the bait, two inner trays, key and a wall adapter. Made of sturdy polypropylene.

- ◆ Dimensions: 155 x 255 x 325 mm



SCAN QR OR
CLICK HERE



Beta Rodent Station

COMPACT STATION FOR RATS AND MICE

Our most popular model with child-resistant features, double lock system, steel rod and a removable tray for easy cleaning. This station also comes with a wall mounting bracket kit.

- ◆ Dimensions: 230 x 190 x 95 mm



Coral Station

ULTRA COMPACT STATION FOR RATS AND MICE

Very cost effective, durable, versatile and ultra compact to fit just about anywhere. The side opening lid offers greater installation flexibility and single locking mechanism provides ease of operation. Comes with steel rod, wall mounting bracket kit and removable tray for easy cleaning.

- ◆ Dimensions: 230 x 125 x 75 mm



Neptuno Rodent Station

VERSATILE MID-SIZE STATION FOR RATS AND MICE

A truly multi-purpose station for use in many different configurations. Available with feeding trays, vertical and horizontal feeding rods for bait, water container, large snap trap and more.

- ◆ Dimensions: 235 x 185 x 90 mm

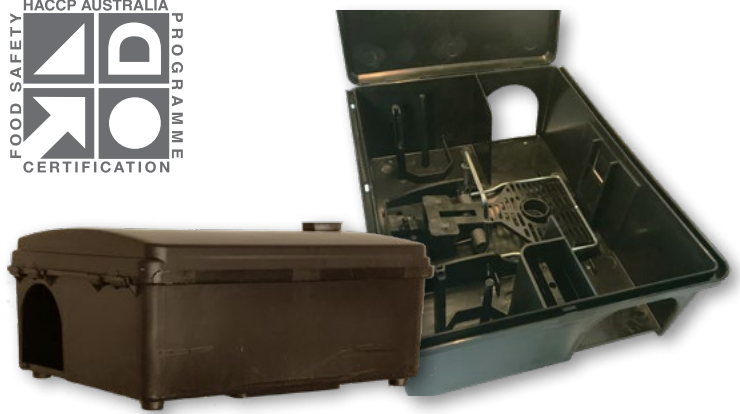


RODENTHOR Maxx – Flat

COMPACT STATION FOR RATS AND MICE

This might be considered the perfect rodent station. Full size for rats and mice, fully lockable, it comes with a seal to protect the lock. Wall security mount included. Fits rodenticide Blocks or sachets on vertical or horizontal rods, includes tray. Fits RODENTHOR GORILLA Humane Rat Trap. Also available with clear lid.

◆ Dimensions: 230 x 182 x 98 mm



RODENTHOR Maxx – Curve

COMPACT STATION FOR RATS AND MICE

A curved lid gives more room for rodents to feed. Full size for rats and mice, fully lockable, it comes with a seal to protect the lock. Wall security mount included. Fits rodenticide Blocks or sachets on vertical or horizontal rods, includes tray. Fits RODENTHOR GORILLA Humane Rat Trap. Also available with clear lid.

◆ Dimensions: 230 x 182 x 120 mm



Peti Mouse Station

COMPACT STATION FOR MICE

Highly durable mouse station capable of housing 2 blocks or soft bait sachets with single key lock for safety.

◆ Dimensions: 125 x 100 x 40 mm



Alpha Rodent Station

TUNNEL BAIT STATION

Sturdy, long lasting station is suitable for both rats and mice and is a cost-effective professional and long-lasting alternative to cardboard rodent boxes. Ideal for placement in roof voids, behind large appliances, etc. Comes fitted with bait rod holder and single key locking system. Rats in particular like to 'run-through' stations of this nature since they can clearly see the exit.

◆ Dimensions: 240 x 105 x 95 mm



Pilot Rodent Station

OUR LARGEST RODENT STATION

This large size station comes with all the trimmings you expect of a premium station. Features include an optional secure wall mounting bracket, horizontal bait rods, vertical posts to hold even more bait, a removable tray for easy cleaning or to hold liquid bait and a spring-loaded dual lock system.

Designed to be positioned along walls or fit snugly into corners. It comes with 2 lid options, black or translucent (see-through).

◆ Dimensions: 350 x 275 x 95 mm



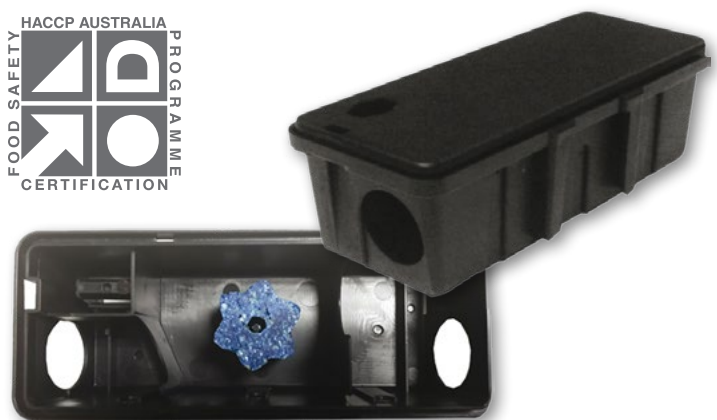
Eris Mouse Station

SECURE MOUSE STATION

This is a small, discreet, water-proof, Station with same secure locking system as our other Stations that comes together with our patented security wall mount adapter.

Rodenticide blocks can be secured vertically with the lid opening laterally for easier servicing.

◆ Dimensions: 173 x 69 x 52 mm



Rock Station

ROCK STATION

Placed around the perimeter of your landscaped gardens, you might never notice this wasn't a natural rock. Designed for baiting both rats and mice, it blends in with the outdoor environment.



Multi-Catch Mouse

MULTI-CATCH BAIT STATION

Heavy duty, rugged metal trap for mice. Multi-catch traps should be inspected every 24-hours, and this model comes with a clear lid to allow for quick and easy checking.

◆ Dimensions: 270 x 170 x 50 mm





VECTOTHOR™

FLYING INSECT CONTROL

VECTOTHOR Flying Insect Control Light Traps



STOP PRESS!

Ensystem is actively developing **FLY IDENTIFICATION SOFTWARE** to complement our Fly Counting Software. This means Real Time information on numbers of insects caught and the species caught!
THAT'S SMART SCIENCE.

ASTRON™ ECO-LED LAMPS

ASTRON^{UV} LED II 9 Watt Lamp

Lighting up the future for Insect Control.



MERCURY
FREE

LEAD
FREE



Key Features

VECTOTHOR DYNAMIC OSCILLATION PULSE TECHNOLOGY™

This unique technology provides class-leading fly trapping performance.

A highly proprietary logarithm has been developed to cause fluctuations in the light beam that are imperceptible by people, but that greatly influence and improve fly catch rates.

Early in the development process of producing high-performance LED lamps, it became clear that since, unlike fluorescent lamps, LED lights produce a constant flow of light; fly landing behaviour was negatively impacted by LED lights and, as a direct consequence, kill rates were reduced. This led to the development of our VECTOTHOR Dynamic Oscillation Pulse Technology™ to provide class leading fly killing performance.

Lifespan of 3 years (25,000 hrs) which means significantly less landfill when compared to fluorescent lamps that are replaced annually.

- Environmentally friendly: no restricted chemicals used in the lamps.
- RoHS / REACH / ISO and CB compliant

Technical Specifications

ASTRON UV LED II 9 WATT Performance

LED technology has been developed by the lighting industry over the past two decades. This innovative technology offers 50% energy savings over traditional lighting technologies, such as the well-known fluorescent lamps.

Working at the cutting-edge of LED UV-A lamp technology Ensystem is pleased to bring the next generation of class-leading LED UV-A lamps to the market - the ASTRON UV LED II 9 Watt lamp.

A special diffusor on the inside of the lamp ensures that the UV-A light is emitted homogeneously, which provides for better insect attraction. It also uses class A LEDs which comply to the highest standards. This ensures trouble free usage.

The ASTRON UV LED II 9 Watt lamp is executed in a full shatterproof design (no glass is used). It is designed for 100% of the light to be projected to the front of the unit making it twice as effective as other lamps on the market.

ENVIRONMENTALLY RESPONSIBLE:
Use 50% less power than traditional lamps, with big savings in energy bills.

	TYPICAL ENERGY CONSUMPTION PER HOUR (W)	ENERGY CONSUMPTION PER YEAR (kW) (8760 HRS)	ENERGY SAVING OF THE ASTRON ^{UV} LED II 9 WATT LAMP (kW)
1. Traditional fluorescent 15 Watt lamp and high frequency ballast	16.5	145	66
2. Traditional 15 Watt lamp and magnetic ballast	20	175	96
3. ASTRON ^{UV} LED II 9 Watt lamp (with internal driver)	9	79	

VECTOTHOR™ LED OMNIVEO™ With Smart Control

A new generation of insect control units for real time monitoring and elimination of flying insects.

Key Features

Each model is available as either IP20 (dust-proof) or IP65 (hose-proof). They are easy to service, stylish and effective.

SMART CONTROL

The optional OMNIVEO SMART CONTROL™ works through new innovations. By means of a high-speed camera. The camera records insects which are lured into the trap onto a glueboard by an ultraviolet light source. The data is immediately forwarded to the user.

This is thanks to worldwide connectivity over the LTE-M network and the IoT platform Cockpit. **Real-time monitoring of insects is a huge leap forward.**

GLUEBOARDS

Insects are caught on a glue layer, which preserves them over time. The caught insects can be counted, and insect species can be analysed, which offers clear advantages in an IPM approach.

ASTRON II LED LAMPS

LED technology offers clear advantages in terms of efficiency (lower energy consumption) and performance.



SCAN QR OR
CLICK HERE



New Generation Range with
REAL TIME MONITORING

Product Details

OMNIVEO 2 lamps LED IP20	VECL3001	2x ASTRON 9 W LED SP
OMNIVEO 2 lamps LED IP65	VECL3003	2x ASTRON 9 W LED SP
OMNIVEO 3 lamps LED IP20	VECL3005	3x ASTRON 9 W LED SP
OMNIVEO 3 lamps LED IP65	VECL3007	3x ASTRON 9 W LED SP



VECTOTHOR™ OSPREY LED

Residential & Professional Use

Product Details

Area coverage:	100+ m ²
Light source:	2 x 9 W ASTRON II LED lamps
Catch type:	Temperature optimised glueboard with silicone paper cover
Weight:	approx. 4 kg with light tubes fitted
Protection rating:	IP 20
Dimensions (LxWxD):	470 x 325 x 100 mm
Mounting position:	Wall mounted
Guarantee:	Two (2) years



Key Features

With its discreet design, the VECTOTHOR OSPREY LED has a 30% improved performance over conventional units due to its unique attraction grid, which reflects the light onto the landing spot thereby stimulating the landing behaviour of flying insects. For use in kitchens, hotels, food production, offices, cafés, restaurants and shops.



VECTOTHOR™ FALCON LED

Residential & Professional Use

Product Details

Area coverage:	50+ m ²
Light source:	1 x 9 W ASTRON II LED lamps
Catch type:	Temperature optimised glueboard with silicone paper cover
Weight:	approx. 2 kg with light tube fitted
Protection rating:	IP 20
Dimensions (LxWxD):	494 x 147 x 165 mm
Mounting position:	Wall mounted
Guarantee:	Two (2) years



Key Features

The VECTOTHOR FALCON LED's unique design directs UV-A light upwards, providing discreet protection in areas where your patrons are present. For use in offices, cafés, restaurants and shops.



VECTOTHOR™ PEREGRINE³ LED

Industrial & Large Commercial Use

Product Details

Area coverage:	150+ m ²
Light source:	3 x 9 W ASTRON II LED lamps
Catch type:	Temperature optimised glueboard with silicone paper cover
Weight:	approx. 6 kg with light tubes fitted
Protection rating:	IP 20
Dimensions (LxWxD):	520 x 150 x 365 mm
Mounting position:	Wall mounted
Guarantee:	Two (2) years



Key Features

With its unique design and powerful insect trapping features, the VECTOTHOR PEREGRINE³ LED is designed for the most severe flying insect problems. For use in kitchens, hotels, food production, offices, cafés, restaurants and shops.

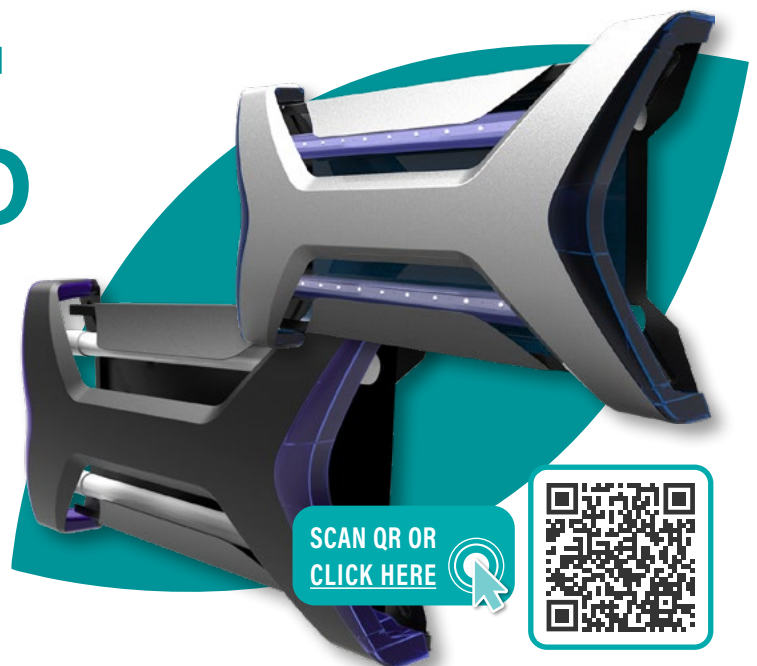


VECTOTHOR™ BUZZARD LED

Residential & Professional Use

Product Details

Area coverage:	100+ m ²
Light source:	2 x 9 W ASTRON II LED lamps
Catch type:	Temperature optimised glueboard with silicone paper cover
Weight:	Approx. 4 kg with light tubes fitted
Protection rating:	IP 20
Dimensions (LxWxD):	520 x 150 x 365 mm
Mounting position:	Wall mounted
Guarantee:	Two (2) years



Key Features

Easy to service, stylish and effective, the VECTOTHOR BUZZARD LED offers it all. Its discreet design enables fast and simple maintenance. Designed for the most severe flying insect problems. For use in kitchens, hotels, food production, offices, cafés, restaurants and shops.



HARRIER NOVA™ LED

Insect Control Unit

Ceiling mounted for use in supermarkets, warehouses & stores.

Product Details

Area coverage:	200+ m ²
Light source:	4 x 9 Watt ASTRON II LED lamps
Catch type:	By means of long life glueboard
Lamp life time:	25,000 hrs (*)
Protection rating:	IP20 / IP65
Dimensions (LxWxD):	500 x 360 x 170 mm
Mounting position:	Ceiling mounted



Key Features

With its discreet design, the HARRIER NOVA™ LED is recommended for ceiling mounting in supermarkets, warehouses, stores and industrial environments. Easy to service, stylish and effective; the HARRIER NOVA™ LED offers it all.

The HARRIER NOVA has 2 LED lamps on each side to allow it to attract flies from both sides when ceiling mounted.

VECTOTHOR HAWK LED

Insect Light Trap

Ceiling mounted system

Product Details

Area coverage:	90 m ²
Light source:	2 x 9 Watt ASTRON UV-A LED II lamp
Catch type:	By means of long life glueboard
Lamp life time:	25,000 hrs (*)
Protection rating:	IP 20 (drip proof)
Dimensions (LxWxD):	500 x 90 x 370 mm
Mounting position:	Ceiling or wall mounted



Key Features

With its innovative design, the VECTOTHOR HAWK is recommended for use in dry environments like supermarkets, warehouses and stores. The VECTOTHOR HAWK is constructed in such a way that the UV-A light is directed upwards

TRADITIONAL FLUORESCENT LIGHT TRAPS

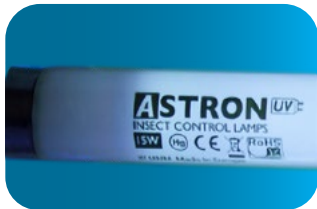
Fly Control Range



VECTOTHOR delivers European design excellence in combination with university proven performance benefits to create the most effective flying insect management system on the market.

Leading edge solutions that guarantee the highest catch rates make VECTOTHOR Flying Insect Killer Light Traps the premium choice for HACCP food management programs, the hospitality industry, hospitals, indeed for anyone who wants peak performance in their flying insect management program.

ASTRON UV-A Lamps



With the UV-A light output optimised to perfectly match the house fly's vision spectrum, ASTRON lamps guarantee you catch more flies more quickly.

- ◆ CE-Approved.
- ◆ acc. IEC 60.335-259 International Standard for Insect Exterminators through TUV-Rheinland.
- ◆ Compliant with RoHS Standards (Removal of Hazardous Substances).
- ◆ Approved for use in HACCP (Hazard Analysis at Critical Control Points) Approved Food facilities.
- ◆ Shatter-proof coating from DuPont.

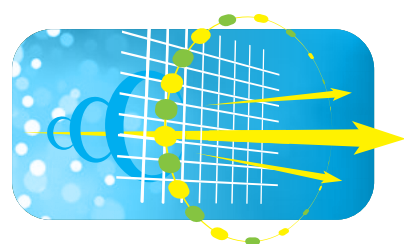
Natural UV-A SUNLIGHT Technology™

VECTOTHOR uses an electronic ballast at 10,000 cycles per second so the lamp is indistinguishable from natural sunlight, thus providing greater attraction. Other lamps feature a mechanical starter and ballast that operates at 50 cycles per second. This means flies see the UV-A light as a rapidly flickering light which is unlike natural sunlight.



Natural Contrast Grid™

This provides 30% improved performance over conventional units since it reflects light onto the landing spot thereby stimulating the natural landing behaviour of flying insects.

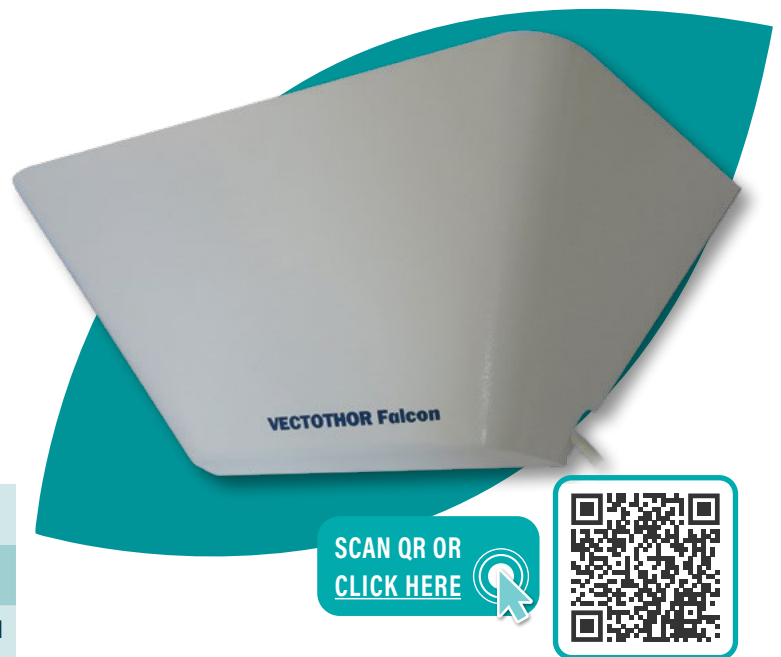


FALCON

Recommended for use in homes, offices, shops and restaurants.

Product Details

Area coverage:	35+ m ²
Light source:	1 x 18 W ASTRON PL UV-A lamp
Catch type:	Temperature Optimised glueboard
Lamp life time:	9,000 hrs
Protection rating:	IP 20 (dust proof)
Dimensions (LxWxD):	440 x 190 x 200 mm
Mounting position:	Wall mounted



Key Features

The FALCON is constructed in such a way that the UV-A light is directed upwards. The FALCON has an all metal housing and uses a powerful UV-A lamp to lure insects into its trap. **Product code: (VECL1015)**



OSPREY

Recommended for use in shops and restaurants and dry industrial environments.

Product Details

Area coverage:	50 - 80 m ²
Light source:	2 x 15 W shatterproof ASTRON UV-A lamps
Catch type:	By means of Temperature Optimised glueboard
Lamp life time:	17,500 hrs
Protection rating:	IP 20 (dust proof)
Dimensions (LxWxD):	470 x 325 x 100 mm
Mounting position:	Wall mounted



Key Features

The unit can be wall mounted; The separate mounting strip offers easy maintenance & service. The OSPREY has a housing made of durable ABS plastic and white powder coated steel. **Product code: (VECL1016)**

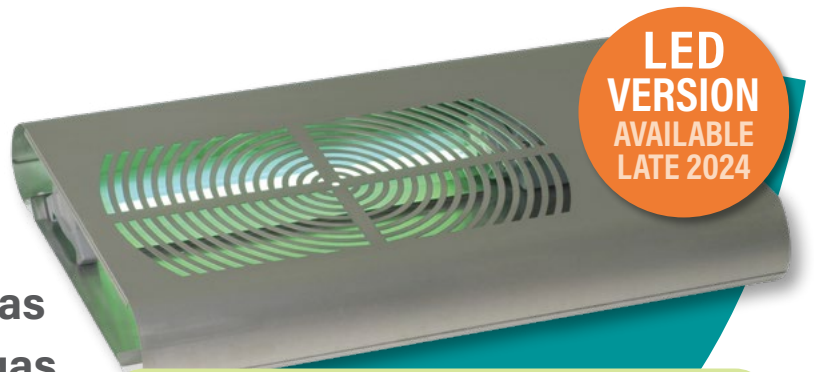


SEA EAGLE 150 EX

Recommended for use in areas with a potential danger of a gas or dust explosion.

Product Details

Area coverage:	100 - 150 m ²
Light source:	2 x 18 Watt shatterproof Philips Longlife UV-A lamps
Catch type:	Temperature Optimised glueboard
Lamp life time:	17,500 hrs
Protection rating:	IP 67 (hose proof/explosion proof)
Dimensions (LxWxD):	770 x 165 x 600 mm
Mounting position:	Wall mounted



LED VERSION AVAILABLE LATE 2024

THE ONLY LIGHT TRAP APPROVED FOR USE IN EXPLOSIVE ENVIRONMENTS - WORLDWIDE!

SCAN QR OR CLICK HERE



Key Features

The SEA EAGLE 150 EX is hose-proof and explosion proof IP rating of 68 and specially designed stainless steel front grid which optimises the attraction potential. The unit can be wall mounted in situations where there is risk of explosion. **Product code: (VECL1013)**



CONDOR 40 HT

Recommended for use in offices, non-food shops and non-food warehouses.

Product Details

Area coverage:	40 m ²
Light source:	1 x 22 W Phillips UV-A lamp
Catch type:	Short circuit proof high tension grid
Lamp life time:	9,000 hrs
Protection rating:	IP 21 (drip proof)
Dimensions (LxWxD):	370 x 370 x 140 mm
Mounting position:	Wall mounted, ceiling mounted or free standing



SCAN QR OR CLICK HERE



Key Features

The unit is constructed in such a way that the UV-A light emission is 360 degrees around the unit. The CONDOR 40 HT has an all metal housing and uses a powerful UV-A lamp to lure insects into its trap. **Product code: (VECL1006)**

BUZZARD

Recommended for use in shops and restaurants and dry industrial environments.

Product Details

Area coverage:	90+ m ²
Light source:	2 x 15 W ASTRON UV-A lamps
Catch type:	Temperature Optimised glueboard
Lamp life time:	9,000 hrs
Protection rating:	IP 20 (dust proof)
Dimensions (LxWxD):	538 x 103 x 311 mm
Mounting position:	Wall mounted



SCAN QR OR
CLICK HERE



Key Features

Wall mounting insect control unit suitable for trapping flying insects by means of 2 powerful UV-A lamps.

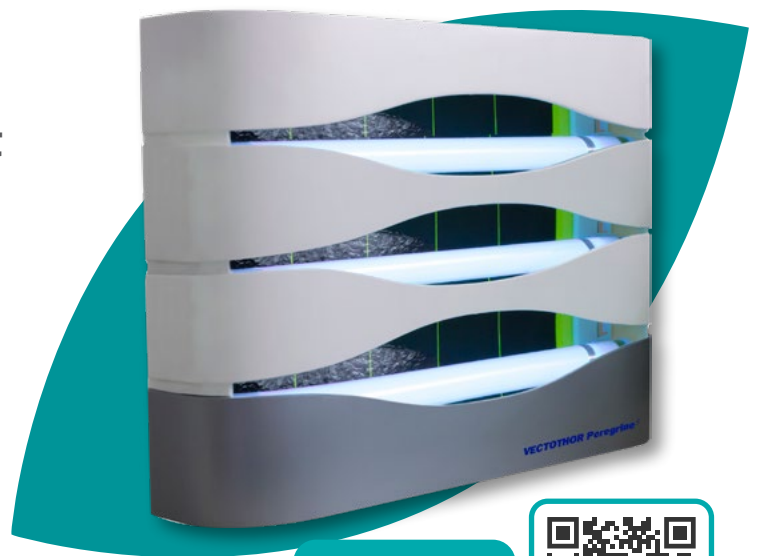
Product code: (VECL2019)

PEREGRINE³

Recommended for the toughest conditions and most severe fly problems in kitchens, food production areas, and more.

Product Details

Area coverage:	120 m ²
Light source:	3 x 15 W shatterproof ASTRON UV-A lamps
Catch type:	Temperature optimised glueboard
Lamp life time:	17,500 hrs
Protection rating:	IP 20 (dust-proof)
Dimensions (LxWxD):	470 x 325 x 100 mm
Mounting position:	Ceiling and wall mounted



SCAN QR OR
CLICK HERE



Key Features

With its totally unique, world first design and fly trapping features, the PEREGRINE³ is easy to service, stylish and effective, featuring European design build standards and a diffuse light output. **Product code: (VECL1027)**



HARRIER NOVA™ FLUORESCENT

HARRIER NOVA™: IP 20

HARRIER NOVA™ WP: IP65

The powerful 160+ m² ceiling mounted insect control units.

Key Features

With its discreet design, the HARRIER NOVA™ is recommended for use in supermarkets, warehouses, stores and industrial environments.

The unit can be ceiling mounted with 2 metal chains and offers easy maintenance and service. Easy to service, stylish and effective; the HARRIER NOVA™ offers it all.

- Effective and proven design
- The ABS plastic housing offers a light but strong body, easy to handle.
- Glueboard placed discreetly behind the lamp, which offers optimised performance.
- 4 x ASTRON 15 Watt SP UV lamps
- Effective coverage of areas up to 160+ m².
- Easy to service with direct access to lamps and glueboards.
- Meets ISO 9001 / RoHS & the CE standard. Unit is HACCP compliant.
- Durable quality components, industrial design.
- The HARRIER NOVA™ is executed with a high frequency ballast. The electronic ballast also offers a high frequency light pulse which means the insect cannot distinguish the lamp from natural UV-A light so providing greater attraction.
- 2-years full guarantee on the mechanical aspects.



SCAN QR OR
CLICK HERE



Product Details

Area coverage:	160+ m ² effective coverage
Light source:	4 x 15 Watt ASTRON shatterproof UV-A lamps T8
Catch type:	By means of temperature optimised glueboard
Lamp life time:	9,000 hrs
Protection rating:	HARRIER NOVA™: IP 20 / HARRIER NOVA™ WP: IP65
Dimensions (LxWxD):	500 x 360 x 170 mm
Mounting position:	Ceiling mounted

VECTOTHOR BLUETOOTH UV-TESTER

The latest UV innovation works with both
LED & Fluorescent Lamps.

The new VECTOTHOR BLUETOOTH UV-A tester has been developed to check the status of UV-A lamps out in the field. It can be used by service technicians, sales persons, and also by clients and auditors. It works for LED lamps and fluorescent lamps.

This is a great tool for showing potential clients just how much more powerful the VECTOTHOR ASTRON lamps are when compared to other lamps in the market.



DUAL POWERLIGHT

Rechargeable Dual Flashlight - UV-A / White Light

The most powerful flashlight available for the pest control industry offering both white light and black light.

Key Features

The powerful white light is ideal for most of your professional inspection needs, whilst the second black light is perfect for scorpion, rodent, bed bug and hygiene inspections, to reveal urine stains, and the presence of insect eggs and more that glow under the UV-A rays of the black light.

This torch is as rugged as they come, protected against water immersion to 1 m, drops from 1.5 m, scratch-proof, temperature-resistant to 100 degrees Celsius and manufactured to ISO9001 - this is a torch for professionals.

CONTENTS:

- DUAL POWERLIGHT
- Li-ion rechargeable battery
- Multi-charger for mains or in-car charging
- Belt holster



SCAN QR OR
CLICK HERE



Specification

Light Source	5 W white Cree LED XPG2 + 5 W UV-A LED
Battery	18650 Li-ion rechargeable battery
Specs	Rated for 20,000 hours (5 years)
Brightness	300 lumens
Working time	5 - 6 hours
Night Reflector	Green Strip lights up in the dark
Weight	184 g
Colour	Black
IP Rating	IPX8 - Protected against water submersion
Body	Aluminum T6061, Premium Type III hard-anodized abrasive finish; scratch-proof.
Electrical supply charger	110-240 V / 50-60 Hz
Dimensions	150 x 35 mm (L x D)

URBAN POWERLIGHT

The Most Powerful Ultra Focus Flashlight

Water resistant and rechargeable featuring 20 W white LED and resistant to the toughest conditions.

Key Features

The URBAN POWERLIGHT is a USB-C rechargeable flashlight equipped with ULTRA FOCUS, making the lamp versatile for various uses. With an Ingress Protection rating of 66 (IP66), the URBAN POWERLIGHT is resistant to the toughest conditions.

The URBAN POWERLIGHT features a powerful 20 Watt LED that delivers 1,300 lumens of dazzling white light through the lens. With ULTRA FOCUS, you can adjust the light to your needs, from a powerful laser beam that extends hundreds of metres to a broad beam reminiscent of a floodlight, illuminating everything in your immediate surroundings.

The URBAN POWERLIGHT is the ultimate light for Professionals.

Do you want to use different light modes? It's easy with the 3 in 1 switch!



SCAN QR OR
CLICK HERE



Specification

Light Source	1 x 20 Watt Laser LED - White 6,500 K
Battery	Rechargeable with USB-C port
Warranty	2 years (on mechanical defects)
Brightness	3 modes - 100 / 800 / 1300 lumens
Working time	4 - 16 hours
Beam Distance	50 / 200 / 350 metre with ULTRA FOCUS
Weight	292 g
Colour	Black
IP Rating	IP 66 - Waterproof
Body	Aluminium T6061TIII hard-anodized finish
Power Supply	1 x Battery 21,700 3.7 V 5,000 mAh
Dimensions	165 mm x 30-42 mm (L x D)



ENSYSTEX[®]
THE INNOVATORS



BROA3000 5.1 04.24

™ ® Trademarks of Ensystem Inc. used under
licence by Ensystem Australasia Pty Ltd

ENSYSTEX AUSTRALIA

Call 13 35 36

www.Ensystem.com.au

ENSYSTEX NEW ZEALAND

Call 0800 ENSYSTEX (0800 367 978)

www.Ensystem.co.nz