

18650 Battery Charger Specifications of the 18650DC

Input voltage	100-240 V	Working temperature	-10 °C to +40 °C
Voltage range	Humidity	Working Humidity	5 % - 90 %
Working frequency	50-60 Hz	Material	Plastic
Output voltage	4.2V DC	Dimensions	105 x 42 x 42.5 mm
Rated operating current	400 mA	Electrical Characteristics	Constant voltage/ constant current/ turn lights/short-circuit protection
Power Range	5 VA	LED indicator	Red: Charging Green: Ready for charging or Fully Charged
Efficiency	80 %	Application areas	Worldwide countries

1. Perfect safety performance, high reliability, produced in accordance with international Standards and procedures of safety certification for production.
2. Low altitude and standby energy loss, in line with energy efficiency Standards in all countries.
3. Perfect jamming performance, with built in EMI filter.
4. Wide input voltage range, 100-240 V, in line with international Standards.
5. Perfect first-class insulation performance, high frequency transformer 100 % vacuum saturated.
6. Full load burn-in temperature, 100 % burn-in testing
7. With constant voltage, constant current, turn lights, short circuit protection (automatic recovery) functions.

ENSYSTEX™

Ensysstex, Inc. 2175 Village Drive, Fayetteville, NC 28304, USA
 Ensysstex Australasia Unit 3 The Junction Estate, 4-6 Junction Street, Auburn NSW 2144, AUSTRALIA



DUAL POWERLIGHT

The most powerful UV-A & White flashlight for professionals

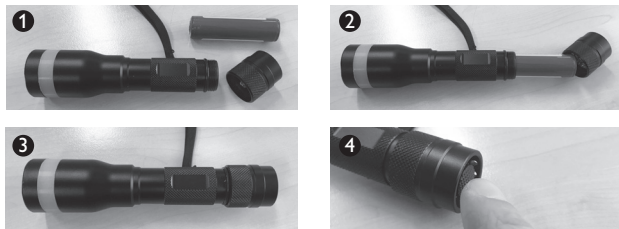
DUAL POWERLIGHT - MANUAL

ENSYSTEX™

VECD1000 1.01 11.17

User instructions

1. Unscrew end cap.
2. Place provided Li-ion battery into chamber.
Positive pole towards the head.
3. Replace end cap.
4. Press end button to operate.



Power on: When off, press the button switch at the base to turn on.

2 different light modes:

1. Press button firmly, so you hear a click, to power on in White Light Mode.
2. Press button gently, whilst in White Light Mode, to activate UV-A Black Light Mode.

Power off: Press button firmly, so you hear a click, to turn power off.



Warranty

24 months warranty on mechanical and electrical failures. Damage due to misuse and negligence falls outside the scope of the warranty.

Maintenance and attention points:

1. Only the supplied high performance rechargeable Li-ion battery **MUST** be used.
2. Avoid contact between chemicals and corrosive gasses. The DUAL POWERLIGHT is water resistant.
3. Users should lubricate the end cap screw thread 2-3 times per year to ensure smooth operation.
4. Use a soft brush and alcohol to clean, when required.
5. If the DUAL POWERLIGHT is opened for repair; the warranty is void. In case of a technical problem, please contact Ensystemx.
6. If the battery needs to be recharged, use only the supplied charger. Make sure that the battery polarity is not reversed, when placed in the charger. *Battery charging time takes from 4 to 8 hours.*

Safety Precautions

1. Avoid direct exposure to eyes, as the high intensity UV-A and White light beams, may harm your eyes.
2. This DUAL POWERLIGHT is not a toy, please keep children away from it.
3. Only use Li-ion batteries sourced from Ensystemx and designed for this DUAL POWERLIGHT. Use of other batteries may cause permanent damage to the DUAL POWERLIGHT.
4. Remove the battery if unused for a long time, to avoid battery leakage which may damage other components.

Specifications

Light source	: 5 watt white Cree LED XPG2 + 5 watt UV-A LED
Power Supply	: Rechargeable Li-ion battery, type 18650
Size	: 150 mm x 27-35 mm / 5.9 x 1-1.4 inch
Weight	: 134 g. (excluding battery)
Switch	: Base switch (sealed silicon) in black color
Colour/Material	: Black / Aluminium T6061TIII hard-anodized finish
Night reflector	: Green reflection strip, which glows in the dark
Treatment	: Anti-abrasive finish
Protection level	: IPX8 (Protected against water submersion)
Drop test	: 1.5 m / 5 ft
Belt holster	: Included