



## **INSTALLATION INSTRUCTIONS**

### **2021-2024 Chevy Suburban | GMC Yukon XL**

All products built and designed by Baseline Overland are intended for off-road use and should be assembled, installed, and used according to Baseline Overland's recommendations. Baseline Overland products should be used safely with good judgment towards others and surroundings. By installing Baseline Overland products on your vehicle, you assume all liability. Baseline Overland will not be held liable for damages or loss associated with the installation or use of its products. It is recommended that you inspect your roof rack within the first 100 miles of installation and every 500 miles after.

## 2021-2024 Chevy Suburban | GMC Yukon XL

### HARDWARE CHECKLIST

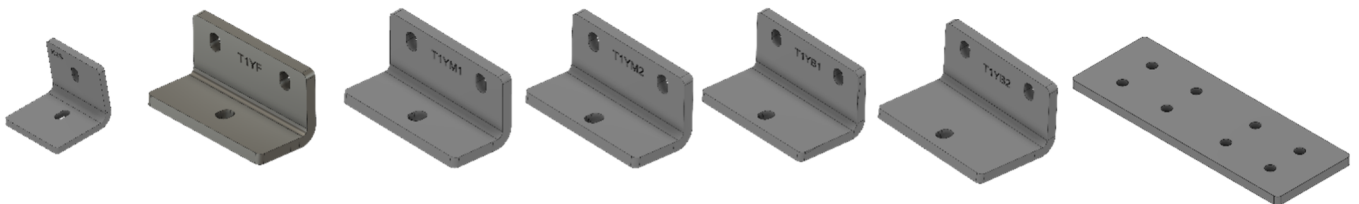
<b>74</b>		18-8 Stainless Steel Button Head Hex Drive Screws, Black-Oxide, 1/4"-20 Thread Size, 1" long
<b>6</b>		18-8 Stainless Steel Button Head Hex Drive Screws, Black-Oxide, 1/4"-20 Thread Size, 5/8" Long
<b>116</b>		Black-Oxide 18-8 Stainless Steel Washer For 1/4" Screw Size
<b>10</b>		18-8 Stainless Steel Washer, Oversized, Number 12 Screw Size, 0.25" Id, 1" Od
<b>36</b>		High-Strength Steel Nylon-Insert Locknut, Black Oxide, 1/4"-20 Thread Size
<b>1</b>		Edge Trim
<b>6</b>		Drop in t-nut
<b>10</b>		18-8 Stainless M6 Bolt – 40mm long
<b>1</b>		Thread locker
<b>9</b>	CROSS BARS	BLACK - 1" x 2" x 52" T-Slotted Aluminum Extrusion- 52"

## Stock Roof Rail Removal Instructions

**\*If you do not feel comfortable with the process outlined in this manual, please seek professional installation assistance**

The factory roof rails are bolted through the roof with a nut on the inside of the roof panel. The headliner will need to be lowered to allow access to remove the nuts and reinstall the new mounting brackets included with your rack. Care should be taken with the airbag system that is in the pillars and along the perimeter of the roof.

Begin by removing the visors, overhead handles, dome light, rearview mirror trim, clothes hooks, and front and rear door pillar trim panels. Pull down and/ or pry with trim tool around perimeter of headliner to release plastic clips. Remove the stock roof rail nuts.



2x K2S  
FEET

2X T1YF  
FRONT

2X T1YM1  
FRONT-MID

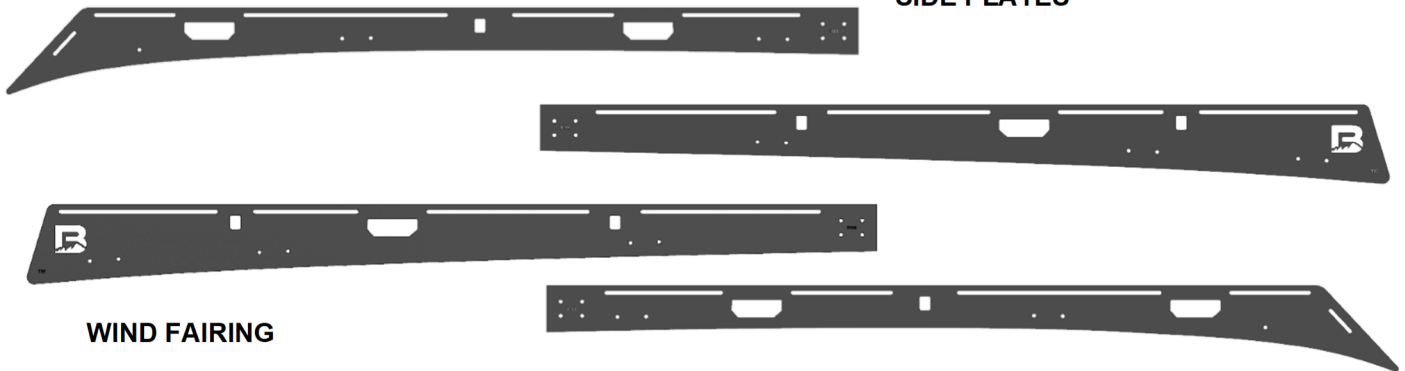
2X T1YM2  
BACK-MID

2X T1YB1  
FRONT-BACK

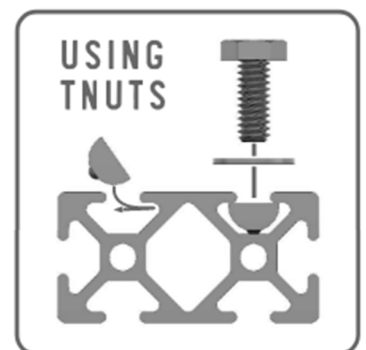
2X T1YB2  
VERY BACK

2XSPLICE  
PLATES

SIDE PLATES



WIND FAIRING



## SIDE RAILS PRE-ASSEMBLY

### Required Components:

16x 1/4"-20 x 1" button head bolts  
32x 1/4" Flat Washers  
2x splice plates

Using 1/4-20x1" bolts, flat washers, and locking nuts, attach the splice plate to connect the front and rear section of the side rails. Ensure ends of rails are tight and square to each other. Securely tighten all nuts. **Pay attention to the "B" logo at the rear install the splice plate on the inboard side of the rail.**

## FRONT FAIRING PRE-ASSEMBLY

### Required Components:

6x 1/4"-20 x 5/8" button head bolts  
6x 1/4" Flat Washers  
6x Tnuts  
1x edge trim

Slide the 6 tnuts into the slots on the cross member from the end, and line them up with the holes in the fairing. Secure with 6 bolts and washers.

Install the edge trim on the curve of the fairing and cut to length at antennae notch and ends of fairing. The bulb seal should face down toward the roof of the vehicle.

## INSTALL ROOF BRACKETS (loosely)

### Required Components:

2X T1YF Front Brackets  
2X T1YM1 Front-Middle Brackets  
2X T1YM2 Back-Middle- Brackets  
2X T1YB1 Front-Back Brackets.  
2X T1YB2 Back Brackets.  
10x M6 bolts  
10x Rubber spacers  
10x Jack Nuts (optional)

### NO DRILL INSTALLATION:

Apply Silicon or appropriate sealant below rubber spacers and around holes. You may wish to dry fit your rack and mounts to the roof prior to applying sealant. Position rubber spacers in roof channel and align holes with factory holes.

### ALTERNATE METHOD:

You may wish to install Jack Nuts in existing holes vs re-attaching with factory nuts to suit your preference. Advantages include allowing the rack mounts to be serviced or removed in the future without dropping the headliner. Improved sealing around enlarged factory holes. This will however prevent re-installation of factory roof rack without first removing the jack nuts and may

require enlarging the factory holes.

Install brackets with vertical leg of the bracket toward the side of the vehicle. Attach the bracket to the roof using the M6 Roof Rack bolts and factory nuts. Hand-tighten the bolts for now to allow for adjustment during assembly and final positioning of roof rack. Bolts should be securely tightened at the end of the installation.

THIS RACK MAY BE FULLY ASSEMBLED OFF OF THE VEHICLE AND PLACED ON THE ROOF OF THE VEHICLE WITH THE HELP OF A SAFE NUMBER OF PEOPLE, OR YOU MAY BOLT ON THE SIDE RAILS TO THE BRACKETS AND ASSEMBLE IN PLACE. EITHER WAY, CARE SHOULD BE TAKEN TO KEEP RACK SQUARE DURING ASSEMBLY. POSITION CROSS BARS ALL THE WAY FORWARD OR BACK IN THE SLOTS ON BOTH SIDES TO MAINTAIN SQUARE ALIGNMENT AND ADJUST TO SUITE AFTER INSTALLTION IS COMPLETE

## **SIDE RAILS INSTALLATION**

**Required Components:**

**20x 1/4"-20 x 1" button head bolts**

**40x 1/4" Flat Washers**

**20x 1/4" lock nuts**

Align the holes of the side rails with the holes in the vertical leg of the brackets and install using the flat washers with the locking nut on the inboard side of the bracket. Assemble loosely to until all bracket bolts, front fairing, and some intermediate crossbars are in place to allow for final adjustment of side rails.

## **WIND FAIRING INSTALLATION**

**Required Components:**

**4x 1/4"-20 x 1"**

**4x 1/4" Flat Washers**

Position the cross bar (with the wind fairing installed) in line with the diagonal slot at the front of the rack. Align the top of the fairing with the top of the roof rack and secure it using 4 bolts and washers. Use of Loctite on bolts is recommended.

## **CROSS BAR INSTALLATION**

**Required Components:**

**32x 1/4"-20 x 1"**

**32x 1/4" Flat Washers**

Secure all the cross members to the rack system. Position according to your load requirements. When supporting heavy loads, ensure that it is evenly supported by the rack system and the crossbars are spaced accordingly. Use of Loctite on bolts is recommended.

Use of power tools – especially impact drivers - to tighten bolts is NOT recommended. This could damage threads in the extrusions and strip out the hex head of the bolt making future removal/adjustment difficult.

## **FINAL INSTALLATION**

Once you have everything tied together, align the rack in the desired final position and securely tighten the lock nuts at each bracket while holding the bolts with an Allen wrench. Standard practice is to tighten the nut while holding the bolt still to not damage the threads or the bolt head. Nuts should be securely tightened. Tighten all factory roof rack bolts to vehicle. Torque to manufacture's specifications

Adjust Fairing if required. It is recommended that some space be left between the edge trim and roof to avoid paint damage.

## **INSTALL SUPPORT FEET**

Required Components:

2x K2S Feet

2x 1/4"-20 x 1" button head bolts

4x 1/4" Flat Washers

2x 1/4" lock nuts

Install the feet with the rubber pad flat against the roof and align with the front hole in the side rail. Install with 1" bolts, washers, and locknut. Press Foot down tight to roof panel to aid in supporting the front end of the rack and tighten lock nut. The slot in the bottom of the foot is not used for this application. Some customers wish to drill and install a nut insert and bolt this to the roof, but this is not required.

# ENJOY!

Thank you so much for your purchase!

I would love to see your rig and hear from you! Email your photos, tips and tricks, and feedback to [peter@baselineoverland.com](mailto:peter@baselineoverland.com)

Tag, message, and follow us on Instagram [@baseline.overland](https://www.instagram.com/baseline.overland) and facebook [@BaselineOverland](https://www.facebook.com/BaselineOverland)

We are working hard to bring products to an underserved market, and your support is very much integral to that work and much appreciated. We hope you love your rack and tell all your friends. In addition to making racks, we source, carry, and are dealers for a wide range of accessories, recovery equipment, and vehicle-based travel gear that is not on our website. If you are in the market for anything, feel free to drop us a line, and let us take care of you.

Best,  
**Peter**



**Peter Clark | Owner**

[peter@baselineoverland.com](mailto:peter@baselineoverland.com)

[www.baselineoverland.com](http://www.baselineoverland.com)

