



INSTALLATION INSTRUCTIONS

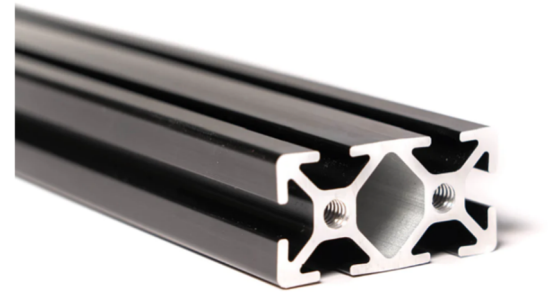
1973-1991 Chevy Blazer | GMC Jimmy

All products built and designed by Baseline Overland are intended for off-road use and should be assembled, installed, and used according to Baseline Overland's recommendations. Baseline Overland products should be used safely with good judgment towards others and surroundings. By installing Baseline Overland products on your vehicle, you assume all liability. Baseline Overland will not be held liable for damages or loss associated with the installation or use of its products. It is recommended that you inspect your roof rack within the first 100 miles of installation and every 500 miles after.

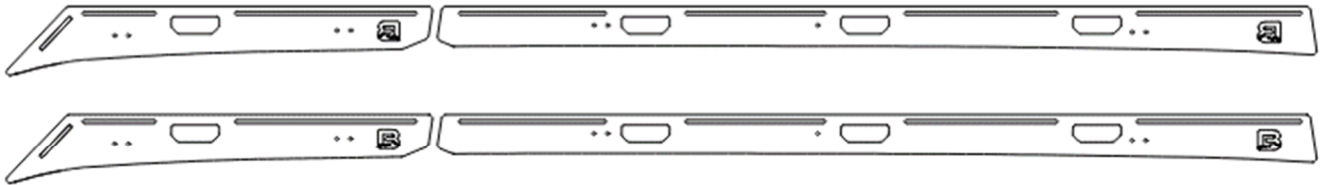
HARDWARE CHECKLIST

50		18-8 Stainless Steel Button Head Hex Drive Screws, Black-Oxide, 1/4"-20 Thread Size, 1" long
6		18-8 Stainless Steel Button Head Hex Drive Screws, Black-Oxide, 1/4"-20 Thread Size, 5/8" Long
74		Black-Oxide 18-8 Stainless Steel Washer For 1/4" Screw Size
18		Stainless Washer, Oversized, 1" Od FOR TOP OF BRACKETS
18		High-Strength Steel Nylon-Insert Locknut, Black Oxide, 1/4"-20 Thread Size
1		Edge Trim
10		18-8 Stainless M6 Bolt x 40 mm
10		High-Strength Steel Nylon-Insert Flange Locknut, Zinc Plated M6 x 1
8		18-8 Stainless M6 Bolt x 20 mm
8		Zinc-Plated Steel Heavy-Duty Rivet Nut, M6x1.0
6		Slide in T Nut 1/4"-20" thread size PACKED W/ CROSSBARS
4		Drop in T-Nut 1/4"-20 Thread (optional accessory) PACKED W/ CROSSBARS
4		Drop in 1/4"-20 Stud (optional accessory) PACKED W/ CROSSBARS
4		Eyes Bolts 1/4" Thread (optional accessory)

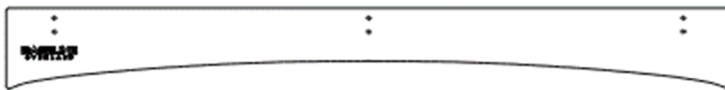
9 Cross Bars



side rails



fairing



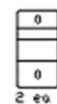
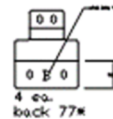
cab brackets



4 front brackets



shell brackets



4 back brackets
2 mid brackets

Please note that Aluminum may bow when cut from panels or when heated during the powder coating process. This won't affect the performance or look of your rack, and it will straighten out when it is assembled with the cross rails. If bowing is present it is recommended to arrange the side sections to oppose each other like: () or () when possible.

SIDE RAILS PRE-ASSEMBLY

Required Components:
28x 1/4"-20 x 1" button head bolts
32x 1/4" Flat Washers

Using 1/4-20x1" bolts, flat washers, attach the cross bars to the side rails. Apply Loctite to bolts prior to assembly. Justify cross bars to the front or back of the slots for assembly to ensure everything remains square. Pay attention to the "B" logo at the rear of the rails to ensure they are on the correct side.

FRONT FAIRING PRE-ASSEMBLY

Required Components:

6x 1/4"-20 x 5/8" button head bolts
6x 1/4" Flat Washers
6x Tnuts
1x edge trim

Slide the 6 tnuts into the slots on the cross member from the end, and line them up with the holes in the fairing. Secure with 6 bolts and washers.

Install the edge trim on the curve of the fairing and cut to length at ends of fairing. The bulb seal should face down toward the roof of the vehicle.

INSTALL ROOF BRACKETS

Required Components:

4x Front Brackets (for cab section)
4x Rear Brackets (for shell section)
2x Intermediate Brackets (for shell section)
18x 1/4"-20 x 1" button head bolts
36x 1/4" Flat Washers
18x 1/4" lock nuts

Position brackets with rubber feet facing down to the roof and vertical leg of the bracket inside the side rails. Assemble using 1" bolts and lock nuts with a washer on either side. Nuts may be left loose at this step to allow for final height adjustment.

INSTALL ROOF RACK

8x M6x20 roof rack bolts for cab section
8x "rivnut" nut inserts
1x "rivnut" tool (not included)
10x M6x40 roof rack bolts for shell section
10x M6 Lock Nuts
6x rectangular aluminum "washers" for inner side of shell
18x fender washers for top side of brackets

IT IS RECOMMENDED THAT THIS RACK BE FULLY ASSEMBLED OFF OF THE VEHICLE AND PLACED ON THE ROOF OF THE VEHICLE WITH THE HELP OF A SAFE NUMBER OF PEOPLE IN ORDER TO PROPERLY LOCATE RIVNUT NUT INSERTS AND HOLES IN THE ROOF. AFTER CENTERING AND ALIGNING THE ROOF RACK, MARK HOLE LOCATIONS, MOVE THE ROOF RACK, DRILL HOLES FOR THE RIVNUTS (10 mm suggested drill size) AND INSTALL WITH NUT INSERT TOOL. IT IS HIGHLY RECOMMENDED THAT A SMALL PILOT HOLE BE DRILLED TO PREVENT THE LARGER BIT FROM "WALKING". IT IS IMPORTANT TO MAKE SURE ALL HOLES ARE DRILLED IN THE PROPER LOCATION. INSTALLING A STOP ON THE DRILL BIT IS RECOMMENDED TO PREVENT OVER DRILLING THE ROOF PANEL AND DAMAGING THE HEADLINER.

The circular head of the nut insert should sit inside the hole of the rubber foot. Attach the bracket to the roof using the M6x20 Roof Rack bolts and fender washers. **WHILE THE RUBBER FOOT AIDS IN CUSHONING AND SEALING AROUND NUT INSERTS, THE USE OF SILICONE AROUND BOLT/ INSIDE BRACKET IS RECOMMENDED TO AVOID LEAKES.** Hand tighten the M6X20 bolts for now to allow for final adjustment and positioning of roof rack. Bolts should be securely tightened at the end of the installation.

Follow the same process for locating holes for shell section. Pay special attention to centering roof rack. There is a long inner “rib”, about 1 inch wide, that runs the length of the shell. Holes should be as close to center of this rib as possible. Use a small pilot bit to drill your first hole. It may be desirable to adjust your hole location if it is not centered and seal the original hole or incorporate into the larger hole. After drilling all 10 pilot holes, use a 6mm or ¼” drill bit, and drill the 10 holes through the fiberglass shell. Install M6x40 bolts and fender washers from through the tops of the brackets and through the shell. Apply silicone inside holes and around bolts to prevent water leaking. Use rectangular washers inside the shell, and secure with M6 lock nuts.

WIND FAIRING INSTALLATION

Required Components:

4x 1/4”-20 x 1”

4x 1/4” Flat Washers

Position the cross bar (with the wind fairing installed) in line with the diagonal slot at the front of the rack. Align the top of the fairing with the top of the roof rack and secure it using 4 bolts and washers. Use of Loctite on bolts is recommended.

FINAL INSTALLATION

Once you have everything tied together, lift the rack to its desired position in the adjustable range and align front and rear racks to be level with each other. It may be helpful to place blocks or wedges under the bars to hold it in the desired position. Once you are satisfied with its position, securely tighten the lock nuts at each bracket while holding the bolts with an Allen wrench. Standard practice is to tighten the nut while holding the bolt still to not damage the threads or the bolt head. Nuts should be securely tightened. Tighten all factory roof rack bolts to vehicle. Torque to manufacturer’s specifications. Do not use impact driver type of drills. Heads of bolts are easily damaged and can make removal difficult or impossible.

Adjust Fairing if required. We recommend keeping a small gap between the edge trim and roof to avoid paint damage from friction or dust or water being trapped against the surface. Alternately a strip of 3M Paint Protection film may be applied below the fairing.

ENJOY!

Thank you so much for your purchase!

SEND US PICTURES! We would love to see your rig and hear from you! Email your photos, tips and tricks, and feedback to peter@baselineoverland.com

Tag us, message us, and follow us on Instagram [@baseline.overland](https://www.instagram.com/baselineoverland) and Facebook [@BaselineOverland](https://www.facebook.com/BaselineOverland)

We are working hard to bring products to an underserved market, and your support is very much integral to that work and much appreciated. We hope you love your rack and tell all your friends. In addition to making racks, we source, carry, and are dealers for a wide range of accessories, recovery equipment, and vehicle-based travel gear. Some of which may not be on our website yet. If you are in the market for anything, feel free to drop us a line, and let us take care of you.

Best,
Peter



Peter Clark | Owner

peter@baselineoverland.com

www.baselineoverland.com

