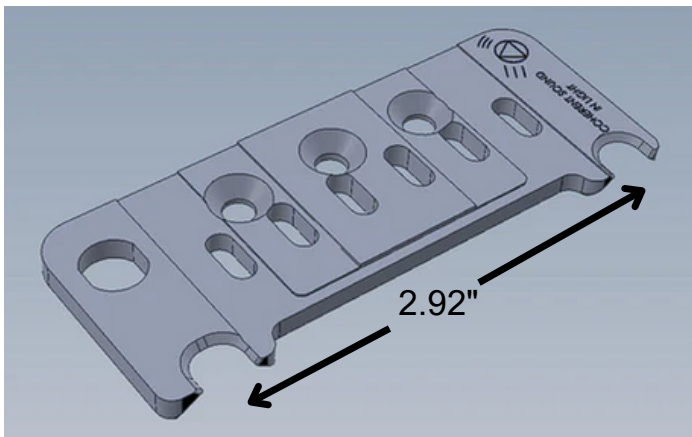


# SOPHIA TREMOLO HARDWARE BUYER'S GUIDE

## 1. CHOOSING A TREMOLO BASEPLATE

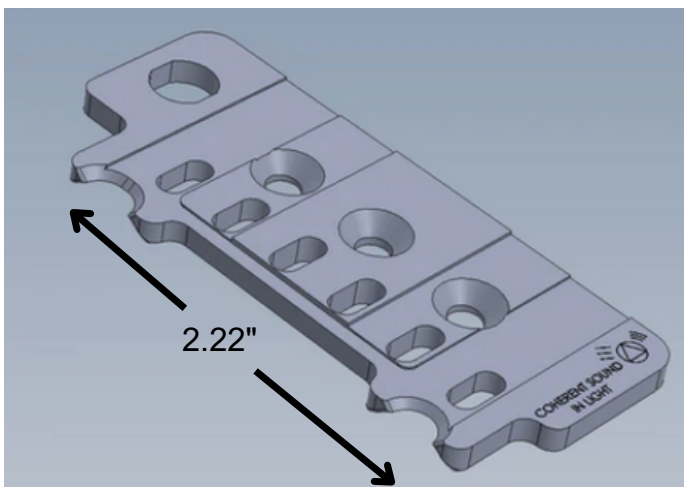
### The 2:92:

Features the same 2.92" tremolo post spacing as Floyd Rose



### The 2:22:

Features the same 2.22" tremolo post spacing as Fender tremolo specs

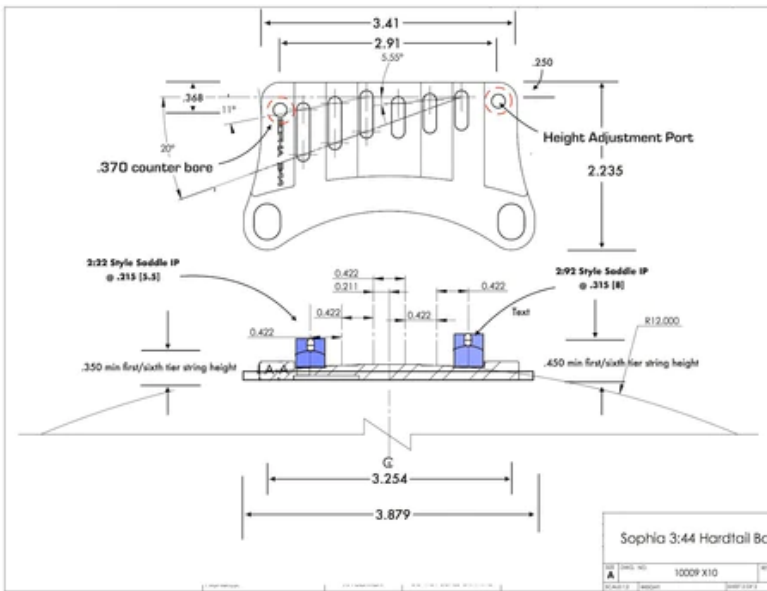


# SOPHIA TREMOLO HARDWARE BUYER'S GUIDE

## 2. CHOOSING A HARDTAIL BASEPLATE

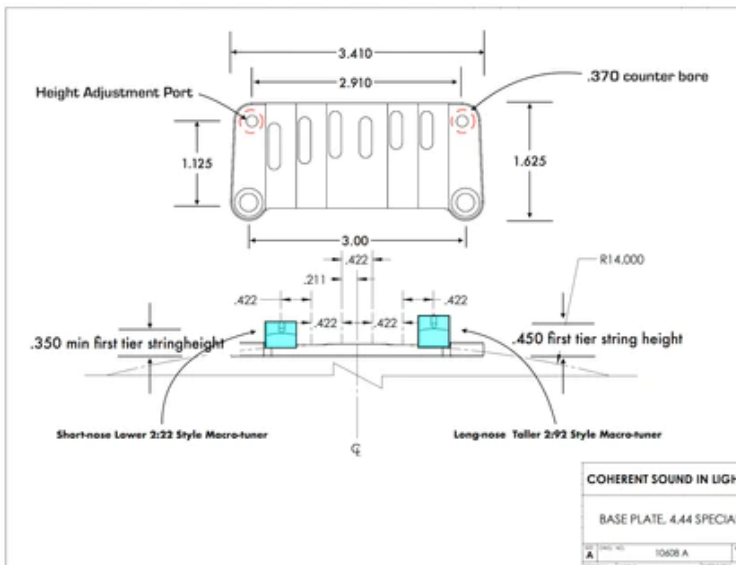
### The 3:44:

Drop-in fit for Tune-O-Matic setups



### The 4:44:

Lower profile design for Fender-type construction where strings run parallel to the body



# SOPHIA TREMOLO HARDWARE BUYER'S GUIDE

## 3. CHOOSING THE SADDLES

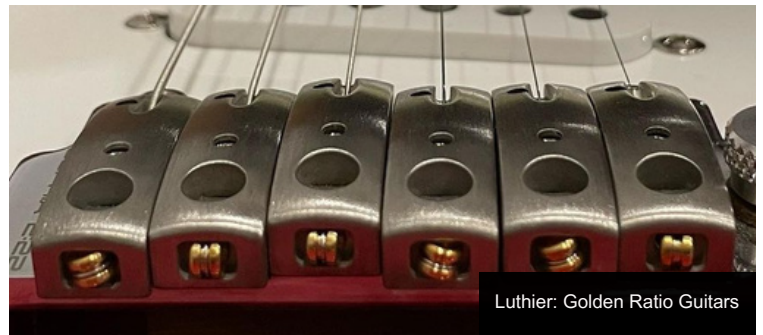
### Standard

Can be top-loaded or strung through the tremolo block



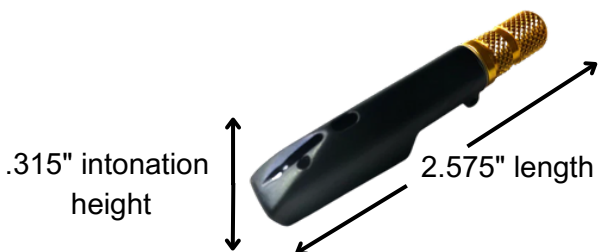
### Deluxe

Can be top-loaded or strung through the tremolo block



### 2:92 Macro-Tuners

Longer length, higher intonation point



Recommended for the 3:44 baseplate TOM setup due to higher intonation point

### 2:22 Macro-Tuners

Shorter length, lower saddle height

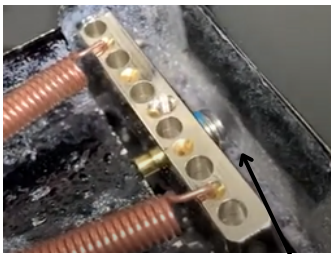


# SOPHIA TREMOLO HARDWARE BUYER'S GUIDE

## 4. CHOOSING YOUR TREMOLO BLOCK

### The Sophia StopBlock

- CNC bell brass mid-sized tremolo block
- Choose from standard Tremstop (adjustable hard stop, not spring loaded) or the Sophia UNO spring-loaded, adjustable stabilizer
- Comes in 42, 37, 34 and 32mm heights



Sophia UNO

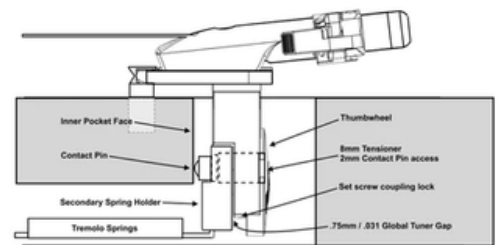


Standard Tremstop

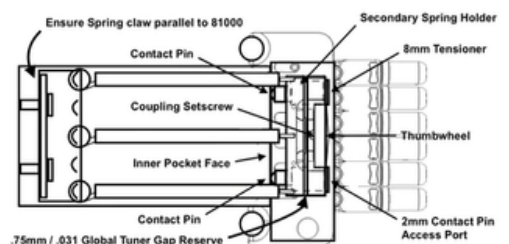


### The Sophia Global Tuner Pro

- Global tuning wheel allows for spring adjustment on the fly without needed to adjust tremolo claw screws
- Dual spring-loaded stabilizers
- Comes in 42, 37, 34 and 32mm heights



Profile setup: base plate is 90° to Riser Posts and Contact Pins just touching Inner Pocket Face



.75mm / .031 Global Tuner Gap Reserve