



Smart Portable Sound Machine User Guide

Model: HMNL-03



Make your sleep warm and fuzzy

Smart Portable Sound Machine User Guide

Thank you for choosing Hotmoon. Hotmoon initiates unprecedented sleep therapy compounded of lights and sounds, improving sleep in a safe and natural way. We offer hundreds of sleep-inducing sounds to soothe your brain and nerves. We also offer rich color options of light to meet various needs. For instance, low warm-white light could strengthen people's sense of security; soft red light stimulates the generation of melatonin, an essential sleep-promoting hormone. Our exclusive sound-light therapy, as it were, could impress users with restful sleep experience.

Its model name is Omini. On the smart mode, Omini works with the free companion Hotmoon app, and makes it easy to personalize your bedtime routine and exclusive sound scene. While on the stand-alone mode, you can still enjoy the built-in sound and light on Omini without phone and network.

Safety Warning

- Please always keep the device at least one meter away from children as the cord can pose a strangulation hazard.
- This product is not waterproof. Do not use it near or place in water.
- Do not place this device aloft. When placing it on the table, please avoid the edges to prevent it from falling down, which might damage the device and also get potential hurt.

Part One – Basic Information of Device2 – 3

Part Two – Stand-alone Mode3 – 5

Part Three – Smart Mode6 – 15

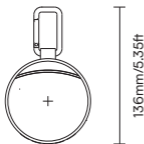
Part Four – FAQ.....16 – 17

Part One - Basic Information of Device

1. Specification

P/N	HMNLO3-W-1	HMNLO3-B-1
Model Number	HMNL-03	
FCC ID	2A3V3HMNL-03	
Wattage	5W (Max)	
Color	RGB+White(3000K)	
Input	DC 5V $\overline{\text{---}}$ 1A	
Working Voltage	5V	
Connector Type	USB Type C	
Working Temperature	0°C-40°C	
Loudness	90 dB	
Ta	40°C	
Mercury Content	No	
Discharge time	8H(Max)	
Charging time	2.5H	
Rated Useful Luminous Flux	6lm (Max)	
Battery capacity	600mAh (Polymer Battery)	
Rated CRI	80	
Dimmable(Y/N)	Y	
Package Includes	Sound Machine x 1, USB-C Cable x 1	
Operating Frequency	BT: -1.59dBm, BLE: -2.71dBm	
EIRP	2402 MHz - 2480 MHz	
Wireless Application Protocol	BT and BLE	

2. Dimension



3. Components



Part Two - Stand-alone Mode

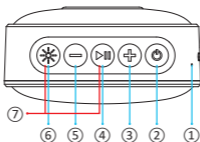
1. Device charging

Step 1: Connect the device to a power adapter with an output voltage of 5V1A with the USB-C cable. Kindly note the power adapter is not included in the package.

Step 2: The functions of the buttons are as below.

On the stand-alone mode, every time you press and hold the power button to turn on the device, the light will light up and flash. It is the signal of reminding you to switch to smart mode. You can press any key to return to the setting of the last time if you want to keep on the stand-alone mode.





① Charging indicator

- Green light: Charging.
- Off: Fully charged.
- Red light flashes: Low battery warning.

② Timer / Power / Reset

- Press: Switch the preset timer from 30, 60, 90 minutes.
- Press over 3 seconds: Power on / off.
- Press over 8 seconds: Reset the device.

③ Brightness / Volume up

- Press: Volume up.
- Press over 3 seconds: Brightness up.

④ Sound

- Press: Switch the built-in sounds.
- Press over 3 seconds: Sound on / off.

⑤ Brightness / Volume down

- Press: Volume down.
- Press over 3 seconds: Brightness down.









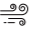











⑥ Light

- Press: Turn on the light when light is off, switch the color when light is on.
- Press over 3 seconds: Light on / off.

⑦ Device Pairing

- Press both two buttons over 3 seconds: To be paired.

Playlist of built-in sounds

1	 Rain	12	 Crowd
2	 Wave	13	 White Noise
3	 Crickets	14	 Pink Noise
4	 Birds	15	 Brown Noise
5	 Fireplace	16	 Relaxing Melody-1
6	 Wind	17	 Relaxing Melody-2
7	 Clothes Dryer	18	 Singing Bowl
8	 Brook	19	 Chimes
9	 Underground Drips	20	 Meditation Melody
10	 Heartbeat	21	 Lullaby-1
11	 Fan	22	 Lullaby-2

Part Three – Smart Mode

1. Download the hotmoon app

To download Hotmoon App, please scan the QR code or search for "Hotmoon" in Apple App Store® (iOS) or Google Play Store (Android).



APP download

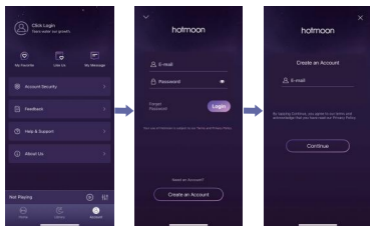


NOTE:

- Due to the requirements of the Android system, it is necessary for the OS below 12 to obtain the geographic location permission when connecting via Bluetooth. It won't be used to record personal private information.
- The Hotmoon App is continually being improved and may change over time. If there is any difference, follow the in-app instructions.

2. Create/login your own hotmoon account

Open the Hotmoon App. If you already have an account, tap "Log In". If not, tap "Create an Account".

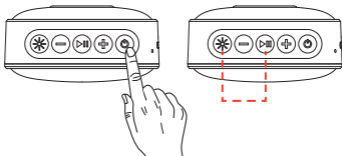


NOTE:

Only the account which is being paired with Omini can unlock the VIP content.

If account A gives Omini to account B after pairing, then account B can unlock the VIP content after pairing, while account A could just enjoy other features except unlocking the VIP content.

Step 1: Press and hold the power button to turn on the device. If it's the first time to use, the white light will flash. If not, you need to press and hold these two buttons ("*" + "▶||") until white light flashes.

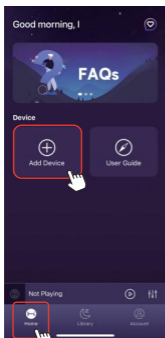


Step 2: Connect Omini to your iPhone

The process of connection varies on iPhone and Android phone. If yours is Android phone, please move to step 4 directly.

2.1. Select Device

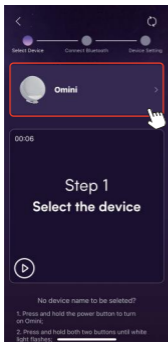
Keep your Omini and your phone next to each other.



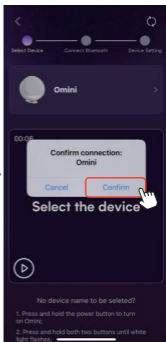
Tap "Add Device"



Tap "Omini"

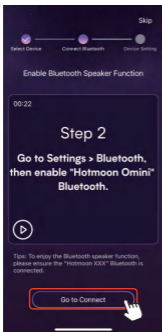


Tap "Omini"

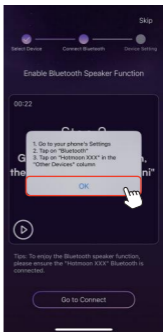


Tap "Confirm"

2.2. Connect Bluetooth

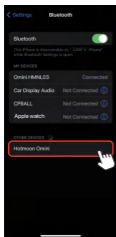


Tap "Go to Connect"

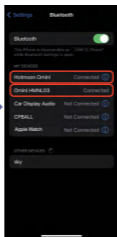


Tap "OK"
Go to "Settings" of
your phone
Tap "Bluetooth"

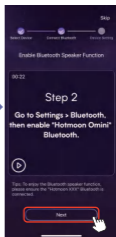
Please kindly note that Omini adopts Dual-mode Bluetooth, one is for controlling the device and another is for playing sounds. You can enjoy the full functions of Omini and Hotmoon APP after both "Hotmoon Omini" and "HMNLO3" are connected.



Tap "Hotmoon Omini" in the "other devices" column.

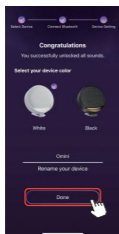


Check if both "Hotmoon Omini" and "HMNLO3" are connected

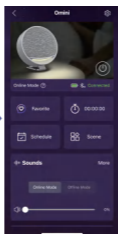


Tap "Next"

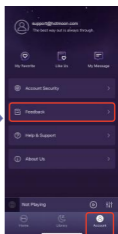
2.3 Set Up



Give it a name if you want.
Tap "Done"



Finish your setup



Contact us via "Feedback" if any query

NOTE:

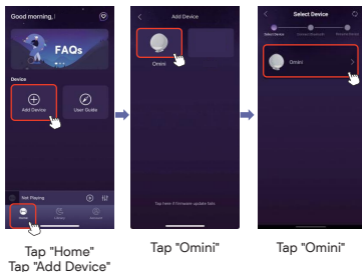
After successful pairing, every time you turn on Omini and Hotmoon App, they will automatically reconnect. If not, please tap "Home"- "Device" under the device list and wait around 5-10 seconds, the device list will be highlighted that the connection is successful. If still fail, please turn off the Bluetooth, Hotmoon App and Omini, and try to connect as per the steps above again.

Step 3: Connect Omini to your Android Phone

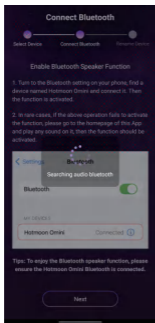
The process of connection varies on iPhone and Android phone. If yours is iPhone, you have finished the whole process.

3.1. Select Device

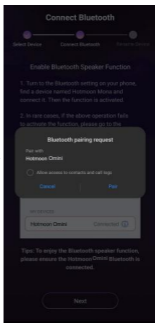
Keep your Omini and your phone next to each other.



3.2. Connect Bluetooth



Stay on the page
until seeing
"Bluetooth Pairing request"

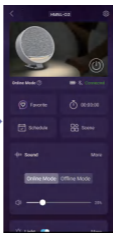


Tap "Pair"

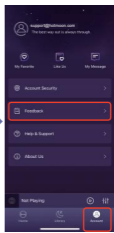
3.3. Set Up



Give it a name if you want.
Tap "Done"



Finish your setup



Contact us via "Feedback" if any query

NOTE:

After successful pairing, every time you turn on Omini and Hotmoon App, they will automatically reconnect. If not, please tap "Home"-"Device" under the device list and wait around 5-10 seconds, the device list will be highlighted that the connection is successful. If still fail, please turn off the Bluetooth, Hotmoon App and Omini, and try to connect as per the steps above again.

Part Four – FAQ

1. I cannot switch sounds by the button of Omini.

While Omini is playing the online sound of Hotmoon App, you have to switch sounds in Hotmoon App instead of the button of Omini.

2. The brightness of Omini cannot be adjusted on the App.

While you are using breathing light, neither the button nor the App can adjust the brightness.

3. How to pause music playback?

Press and hold the button in the middle of Omini device, the audio would be paused. And press and hold the button again, the audio will continue to play.

4. While my Omini is playing the built-in sound, I cannot hear the sounds of other Apps.

Yes, it is designed for immersive experience. If your phone is connected to your Omini device, no sound from the phone will play through your Omini when it is playing the built-in sound.

5. I want to enjoy the sleep sounds of Hotmoon while using other Apps.

Omini cannot play the sounds of Hotmoon App and other App at the same time. You can play the 22 built-in non-looping sounds of Omini while using other Apps.

6. The Bluetooth setting page of my phone shows that there are two Bluetooth connections with names including Omini?

Omini adopts Dual-mode Bluetooth, one for controlling the device and another is for playing sounds. For iPhone users, the Bluetooth setting page will show that 2 Bluetooth names with Omini are connected at the same time. And you can enjoy the full functions of Omini and Hotmoon APP after both are connected.

7. The sounds being played by Omini is interrupted by the phone system notifications, text messages, incoming calls and other sounds.

Please set your phone to mute mode, then the other sounds will not interrupt the music that Omini is playing.

8. My phone cannot connect to Omini automatically after successful pairing.

After completing the Omini binding, every time you turn on the device and Hotmoon App, they will automatically reconnect. If not, you need to click the "Hotmoon Omini" in your phone's Bluetooth setting page to connect.

9. Can my mobile phone connect to Omini without network?

Yes. After logging in the Hotmoon App with network, within a week you can log in without network, connect to Omini via Bluetooth and play any cached audio.

10. What do online mode and offline mode mean?

Online mode means Omini only can play sounds of your phone.

Offline mode means Omini only can play the built-in sounds.

11 . Why do I need to offer geographic location permission?

Due to the requirements of the Android system, it is necessary for the OS below 12 to obtain the geographic location permission when connecting via Bluetooth. And you can turn off the geographic location permission after pairing.

12. How to use the Bluetooth speaker function of Omini?

Please make sure the Omini device has been connected to Hotmoon App. Turn on the Bluetooth of your phone, find the Bluetooth named "Hotmoon Omini" and connect it. Then the Bluetooth speaker function is activated.

FCC Warning:

Any Changes or modifications not expressly approved by the party responsible for compliance could void the user's authority to operate the equipment.

This device complies with part 15 of the FCC Rules. Operation is subject to the following two conditions:

- (1) This device may not cause harmful interference, and
- (2) This device must accept any interference received, including interference that may cause undesired operation.

Note: This equipment has been tested and found to comply with the limits for a Class B digital device, pursuant to part 15 of the FCC Rules. These limits are designed to provide reasonable protection against harmful interference in a residential installation. This equipment generates uses and can radiate radio frequency energy and, if not installed and used in accordance with the instructions, may cause harmful interference to radio communications.

However, there is no guarantee that interference will not occur in a particular installation. If this equipment does cause harmful interference to radio or television reception, which can be determined by turning the equipment off and on, the user is encouraged to try to correct the interference by one or more of the following measures:


- Reorient or relocate the receiving antenna.
- Increase the separation between the equipment and receiver.
- Connect the equipment into an outlet on a circuit different from that to which the receiver is connected.
- Consult the dealer or an experienced radio/TV technician for help.

The device has been evaluated to meet general RF exposure requirement. The device can be used in portable exposure condition without restriction.

Manufacturer: Shenzhen ZhiLong Electronic Technology Co., Ltd
(ShenZhenShi ZhiLong DianZi KeJi YouXian GongSi)

Address: No.105, Fourth Lane, Yongxiang Rd., Wuhe Community,
Bantian St., Longgang Dist., Shenzhen, CHINA 518000



 Go paper-free, make life easier,
and do something good for the environment.



MADE IN CHINA