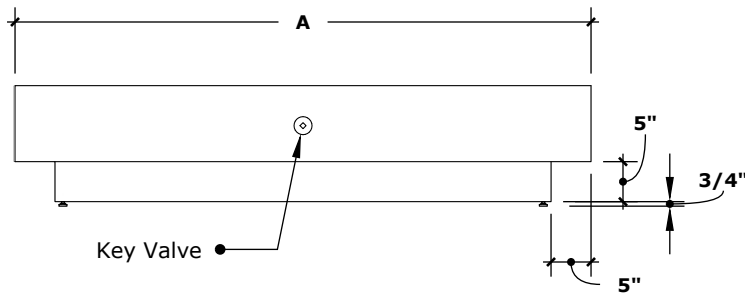


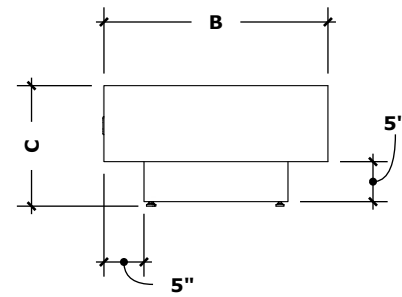
# CORONADO FIRE PIT

## Wood Grain Concrete



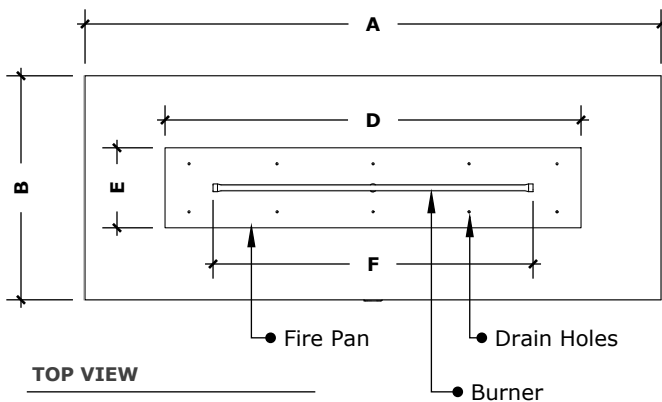
**FRONT VIEW**

scale: 1/2" = 1'-0" (1:24)



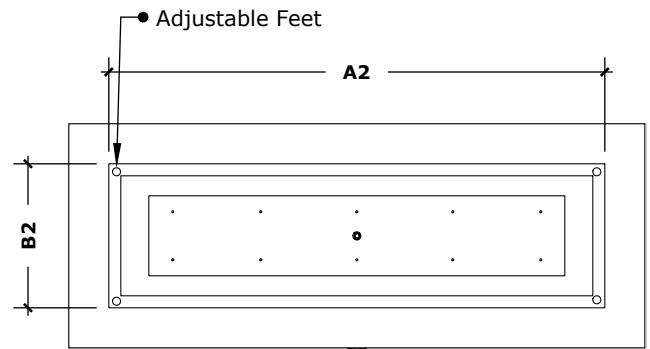
**RIGHT VIEW**

scale: 1/2" = 1'-0" (1:24)



**TOP VIEW**

scale: 1/2" = 1'-0" (1:24)



**UNDERSIDE VIEW**

scale: 1/2" = 1'-0" (1:24)

PART NUMBER	A	B	A2	B2	C	D	E	F	BTU
OPT-COR60	60"	28"	50"	18"	15"	42"	10"	30"	50,000
OPT-COR72	72"	28"	62"	18"	15"	54"	10"	42"	65,000
OPT-COR84	84"	28"	74"	18"	15"	66"	10"	54"	65,000
OPT-COR96	96"	28"	86"	18"	15"	78"	10"	66"	65,000
OPT-COR108	108"	28"	98"	18"	15"	90"	10"	78"	65,000
OPT-COR120	120"	28"	110"	18"	15"	102"	10"	90"	65,000

Fire Pit Material: Multiple

Pan Material: 304 Stainless Steel

Burner Material: 304 Stainless Steel

Standard 2" Depth on all pans

**Match Lit Unit Includes:** Pan, Burner, Gas Orifice, Gas Hoses, Key Valve, Key,

**110v Ignition Unit Includes:** Pan, Burner, Gas Orifice, Gas Hoses, Key Valve, Key, Plug & Play Electronic Valve, Pilot Igniter.



**110V ELECTRONIC IGNITION CERTIFICATION**  
ANSI Z21.97-(2017) / CSA 2.41-(2017)

*Proprietary & Confidential:* The information contained in this drawing is the sole property of **The Outdoor Plus**. Any reproduction or as a whole without written permission of **The Outdoor Plus** is prohibited.