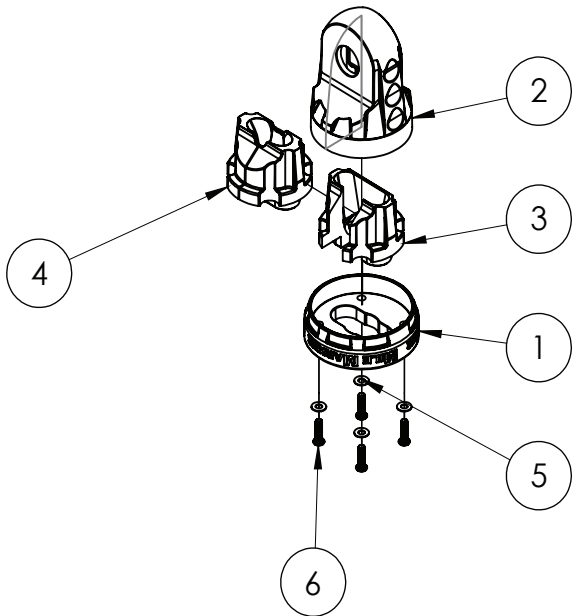


**PREMIUM WINCH SHACKLE MOUNT**

**Part Number: 60-12100**

Congratulations on your purchase of a Mile Marker Premium Winch Shackle Mount.  
Before we start installation, make sure all components below are in the box.



ITEM NO.	PART NUMBER	DESCRIPTION	QTY.
1	60-12100-01	Shackle Mount Rubber Base	1
2	60-12100-03	Shackle Mount Housing	1
3	60-12100-02-R	Inner Grommet-Rope	1
4	60-12100-02-C	Inner Grommet-Cable	1
5	60-12100-05	M5 Washer	4
6	60-12100-06	"M5 x 0.8 x16 Ultra-Low Profile Socket Head Screw"	4

**WARRANTY**

For full warranty policies and procedures, please visit [MileMarker.com/warranty](http://MileMarker.com/warranty).

**! WARNING:** This product contains chemicals known to the State of California to cause cancer and birth defects or other reproductive harm.  
For more information, go to [www.P65Warnings.ca.gov](http://www.P65Warnings.ca.gov).



Learn more

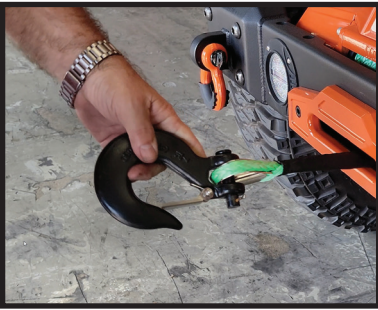


**MILEMARKER.COM**  
INFO@MILEMARKER.COM  
1-800-886-8647  
2121 BLOUNT ROAD  
POMPANO BEACH, FL 33069

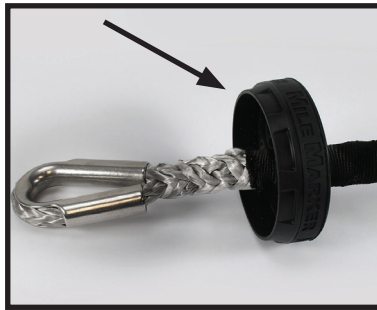


**INSTALLATION INSTRUCTIONS**

\*\*Tools needed: 3mm Allen wrench



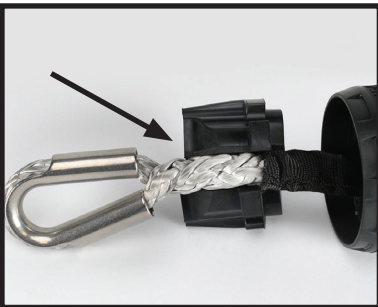
1. To install, remove old hook. On most hooks, you will need to remove cotter and pin to remove from cable or rope. Some hooks you will have to cut.



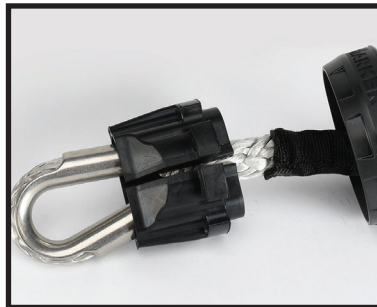
2. First, install the backing plate on to the cable or rope as pictured above.



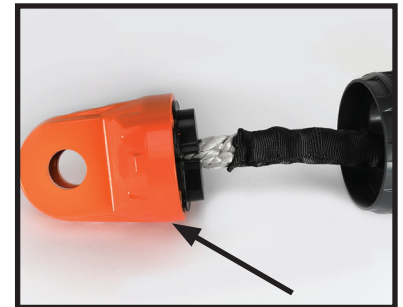
3. Select correct insert. Each insert is marked with R (for synthetic rope) or C (wire cable).



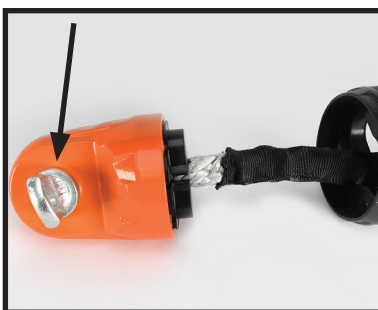
4. Open up the insert and slide into rope or cable.



5. Be sure not to pull the insert too far over the end of the rope or cable.



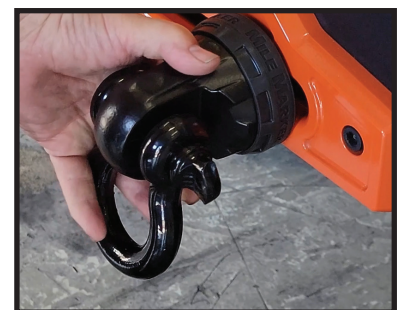
6. At this point you can install the insert into the aluminum shackle mount body.



7. Install shackle pin screw into the aluminum shackle body. This will help keep components together.



7. Slide backing plate over aluminum shackle mount. Line up the 4 allen holes. Securely tighten the 4 allen screws.



7. Lastly, install shackle to aluminum shackle body. Winch in to secure shackle mount in to place firmly against fairlead.