

# MILE MARKER

COMBAT PROVEN. CUSTOMER DRIVEN.



**NEW!**



**MISSION SERIES**



**RECOVERY GEAR**



**ACCESSORIES**

**NEW!**



**CUSTOM HUBS**

**2022-2023  
PRODUCT CATALOG**



## TABLE OF CONTENTS

**5 JEEP/TRUCK/SUV  
WINCHES**

**10 TRAILER & UTILITY  
WINCHES**

**11 POWERSPORTS  
WINCHES**

**14 HYDRAULIC  
WINCHES**

**23 MOUNTING  
SYSTEMS**

**28 RECOVERY GEAR**

**30 WINCH  
ACCESSORIES**

**33 TRANSFER CASE  
CONVERSION KITS**

**34 PREMIUM LOCKING  
HUBS**

**35 HUB APPLICATION  
GUIDE**

**37 WARRANTY**



**MILE MARKER**  
COMBAT PROVEN. CUSTOMER DRIVEN.



**YOUR GEAR, YOUR WAY!**

**PREMIUM HUBS**



**SHACKLES**



**RHINO PULL**



**CUSTOM WINCHES,  
ROPES, AND ACCESSORIES**

MILEMARKER.COM



# RHINO 1000 PULL PORTABLE ELECTRIC WINCH™



## BENEFITS:

- Pulls or lifts up to 1000 lbs.
- 39' Synthetic Rope
- Wired and Wireless remote
- Variable speed
- 2.0Ah Rechargeable Lithium battery (Extra batteries available)
- Brushless motor
- LED display
- Wide range of accessories
- Available charging dock
- Available cigarette lighter adapter

## THE RIGHT TOOL FOR THE RIGHT JOB

The all-new Mile Marker Rhino Pull 1000 will give you the power to pull items anywhere you need to, including the garage, workshop, the farm, and the field. This ergonomically designed tool features 39' of synthetic rope, a variable speed speed hand controller, a wireless control that can work up to 50' away, and a corded remote. Featuring an LED display to provide feedback, a brushless motor with digital controlled modules, DC 24V 2.0Ah lithium battery with power indicator LED lights, AC charger 30V 2000mA, and it is lightweight at 16.8 lbs.

## SPECIFICATIONS:

|                        |  |
|------------------------|--|
| Rated Line Pull        | 1000 lbs. (454 kg)                           |
| Battery Power Supply   | 24V DC                                       |
| Synthetic Rope         | 5mm X 12 m                                   |
| Battery                | Lithium Battery                              |
| Battery Capacity       | 2.0Ah  |
| Battery Charger Input  | 100-240V AC 50-60 Hz 75W                     |
| Battery Charger Output | 30 V = 2000 mA                               |
| Dimensions             | 24" X 10" X 10.5" (610 mm X 256 mm X 267 mm) |
| Net Weight             | 16.8 LB (7.6 kg)                             |
| Part Number            | 71-1000                                      |

Learn More



[@MileMarkerWinch](https://www.MileMarkerWinch.com)  
[MileMarker.com](https://www.MileMarkerWinch.com)

**RHINO**  
1000  
**PULL**  
PORTABLE ELECTRIC WINCH™



**ACCESSORIES**



Rhino Snatch Block  
PN: 60-50100



Rhino Pull Case  
PN: 30-71-C1



Rhino Pull Bag  
PN: 30-71-B1



12V. Car Charger  
PN: 71-1000-72



Rhino Strap  
PN: 19108



3/8" & 5/8"  
Shackles  
PN: 60-50138  
PN: 60-50158



Rhino Power Station  
PN: 71-1000-70

**REPLACEMENT PARTS**



Synthetic Rope  
PN: 71-1000-39



Remote Wire  
PN: 71-1000-45



Wall Charger  
PN: 71-1000-43



Battery  
PN: 71-1000-29



Hook Strap  
PN: 19-50042B



Wireless Remote  
PN: 71-1000-44



# ALL NEW MISSION SERIES



## 12V ELECTRIC WINCH FOR TRUCKS/SUV/JEEPS/BRONCOS

The U.S. Military has trusted our winches over three decades... *now you can too!*

### FEATURES:

- Modern and customizable look (over 10 OEM colors and 4 other designs!)
- Available in 8, 10, and 12K capacities
- Fully Submersible
- Automatic load holding/ low friction brake
- Rugged heavy-duty solenoid
- 92' synthetic rope
- Aluminum hawse fairlead
- Military grade drum
- Future smart phone app compatible
- Wireless remote kit available
- Durable corrosion resistant stainless accents



## FULL SPECS

### 8K

### 10K

### 12K

|                             |  |  |  |
|-----------------------------|--|--|--|
| Rated Line Pull             | 8000 lbs (3632 kg)   | 10000 lbs (4536 kg)  | 12000 lbs (5445 kg)  |
| Gear Train                  | 3 Stage planetary  | 3 Stage planetary  | 3 Stage planetary  |
| Motor                       | Series wound, 4.7 hp (3.5 kw), 12 Volt, 24 Volt available  | Series wound, 4.7 hp (3.5 kw), 12 Volt, 24 Volt available  | Series wound, 4.7 hp (3.5 kw), 12 Volt, 24 Volt available  |
| Remote                      | Power in, Power out with 12' cable (3.7 m)                 | Power in, Power out with 12' cable (3.7 m)                 | Power in, Power out with 12' cable (3.7 m)                 |
| Dimensions (LxWxH)          | 21.1" X 6.34" X 10.1" (535 mm X 161 mm X 255 mm)           | 21.1" X 6.34" X 10.1" (535 mm X 161 mm X 255 mm)           | 21.1" X 6.34" X 10.1" (535 mm X 161 mm X 255 mm)           |
| Synthetic Rope              | 5/16" X 92' (7.9 mm X 28 m) (13,228 lb. breaking strength) | 3/8" X 92' (9.53 mm X 28 m) (18,078 lb. breaking strength) | 3/8" X 92' (9.53 mm X 28 m) (18,078 lb. breaking strength) |
| Net Weight Synthetic Rope   | 57.3 lbs (25.9 kg)   | 57.8 lbs (26.2 kg)   | 57.8 lbs (26.2 kg)   |
| Drum Size Diameter X length | 2.48" X 8.35" (63 mm X 212 mm), hardened                   | 2.64" X 8.35" (67 mm X 212mm), hardened                    | 2.64" X 8.35" (67 mm X 212 mm), hardened                   |
| Bolt Pattern                | 4 bolt pattern, 10" x 4.5" (254 mm X 114.3 mm)             | 4 bolt pattern, 10" x 4.5" (254 mm X 114.3 mm)             | 4 bolt pattern, 10" x 4.5" (254 mm X 114.3 mm)             |



# MISSION

SERIES



**MILE  
MARKER**

COMBAT PROVEN. CUSTOMER DRIVEN.

# JEEP/TRUCK/SUV WINCHES

**SUBMERSIBLE SOLENOID**  
Marine grade connections at the remote control plug and socket

**STAINLESS STEEL**  
Bolts and fasteners to prevent exterior corrosion even in the smallest places



## ALL WEATHER WINCHING

Our completely sealed, fully submersible winch is a design that can truly spite the weather. A winch at its core is a tool, waiting for its call to action. Wherever you off-road, our waterproof winches will always be ready to perform. No rusting, no corroding, no pitting.

## STRENGTH, PERFORMANCE, VALUE

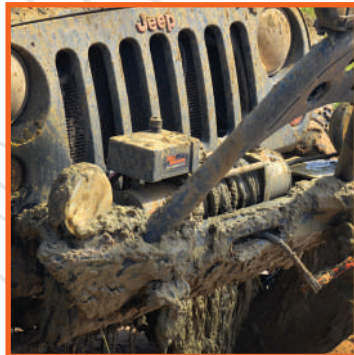
Mile Marker winches define value – both our working range line speeds and our performance are the best in the class. This comes from years of motor tuning and gear ratio development to ensure high quality performance across the electric winch line.

## CHOOSE THE WINCH FOR YOU

We offer 8,000, 9,500, 12,000 and 15,000 pound units for your off-roading truck, Jeep or SUV. Our 18,000 pound winch's innovative design is perfect for your tow truck or industrial DC applications.



**WATERPROOF**



**MUD PROOF**



**SNOW PROOF**



# SEC18



77-50280W

## FEATURES:

- 7.7 HP Series Wound Motor
- Rugged Planetary Gear Sets
- Clockable Gear Housing
- Fast Line Speeds
- Submersible, 400 Amp Solenoid
- Automatic Load Holding Brake
- Corrosion Resistant Stainless Steel Fasteners
- 79' Steel Cable
- Roller Fairlead
- Waterproof
- Handheld Remote Control

## STRONGEST ELECTRIC WINCH

The SEC18 pulls 18,000 pounds of recovery power. This industrial grade winch is perfect for your tow truck, fire truck, utility vehicle, or industrial DC. Our SEC18 is lightweight for its strength and features fast line speeds.

### SPECIFICATIONS (18K):

|                                |  |
|--------------------------------|--|
| Rated Line Pull                | 18000 lbs. (8164 kg)   |
| Gear Train                     | 3 Stage planetary  |
| Gear Ratio                     | 315:1  |
| Motor                          | 12 Volt DC, input power 7.7 hp (5.6 kw)<br>24 Volt available                                     |
| Remote                         | Power in, Power out with 12' cable (3.7 m)   |
| Dimensions (LxWxH)             | 26" X 8.5" X 8.5" (662 mm X 214 mm X 214 mm)   |
| Steel Cable                    | 1/2" X 79' (12.7 mm X 24 m)<br>(19,505 lb. breaking strength)                                    |
| Drum Size<br>Diameter x Length | 4" X 10" (101.6 mm X 254 mm)   |
| Flange Diameter                | 9" (228.6 mm)  |
| Net Weight                     | 154 lb. (69.8 kg)  |
| Bolt Pattern                   | 8 bolt pattern<br>Outer 6.5" X 12" (165 mm X 304.8 mm)<br>Inner 4.5" X 12" (114.3 mm X 304.8 mm) |

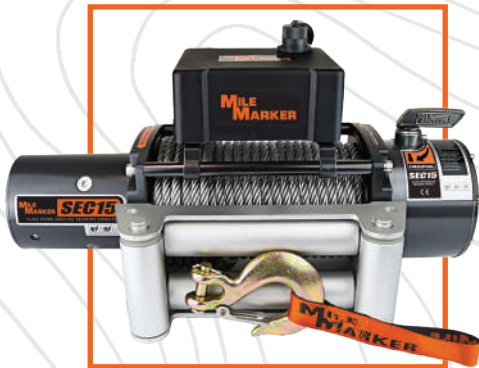
### PERFORMANCE (18K):

| Line Pull |      | Line Speed   |              | Motor Current  |
|-----------|------|--------------|--------------|----------------|
| lb        | kg   | fpm<br>(12V) | mpm<br>(12V) | amps<br>@ 12 V |
| 0         | 0    | 23.6         | 7.2          | 68             |
| 6000      | 2724 | 10.2         | 3.1          | 235            |
| 8000      | 3632 | 9.2          | 2.8          | 282            |
| 10000     | 4540 | 4.9          | 1.5          | 310            |
| 12000     | 5448 | 3.9          | 1.2          | 378            |
| 15000     | 6810 | 3.3          | 1            | 420            |
| 18000     | 8172 | 2.6          | 0.8          | 469            |

# SEC15

## BIG WINCH POWER, SMALL WINCH WEIGHT

Our 15,000 pound winch packs heavy duty power. The light, compact design mounts easily to a full size truck or Jeep. Each SEC15 includes a 15' recovery strap for longer pulls.



**Steel Cable**

76-50260W

### FEATURES:

- 6.8 HP Series Wound Motor
- Rugged Planetary Gear Sets
- Clockable Gear Housing
- Fast Line Speeds
- Submersible, 400 Amp Solenoid
- Automatic Load Holding Brake
- Corrosion Resistant Stainless Steel Fasteners
- 79' Steel Cable or 72' Synthetic Rope
- Aluminum Hawse or Roller Fairlead
- Waterproof
- Handheld Remote Control
- Includes 15' Recovery Strap



**Synthetic Rope**

76-53260W

### SPECIFICATIONS (15K):

|                             |  |
|-----------------------------|--|
| Rated Line Pull             | 15000 lbs (6803 kgs)                                       |
| Gear Train                  | 3 Stage planetary  |
| Gear Ratio                  | 294:1  |
| Motor                       | Series wound, 6.8 hp (5 kw), 12 Volt 24 Volt available     |
| Remote                      | Power in, Power out with 12' cable (3.7 m)                 |
| Dimensions (LxWxH)          | 22" X 6.3" X 8.3" (558 mm X 160 mm X 211 mm)               |
| Steel Cable                 | 25/64" X 79' (10 mm X 24 m) (16,409 lb. breaking strength) |
| Synthetic Rope              | 25/64" X 72' (10 mm X 22 m) (18,078 lb. breaking strength) |
| Drum Size Diameter x Length | 2.9" X 8.9" (75 mm X 226 mm)                               |
| Net Weight Synthetic Rope   | 63 lbs (28.5 kgs)  |
| Net Weight Steel Cable      | 85 lbs (38.5 kgs)  |
| Bolt Pattern                | 4 bolt pattern, 4.5" x 10" (114.3 mm X 254 mm)             |

### PERFORMANCE (15K):

| Line Pull | Line Pull |      | Line Speed |     | Motor Current |
|-----------|-----------|------|------------|-----|---------------|
|           | lb        | kg   | fpm        | mpm | amps @ 12 V   |
| 0         | 0         | 0    | 16.7       | 5   | 120           |
| 4000      | 1816      | 1816 | 12         | 3.7 | 202           |
| 6000      | 2724      | 2724 | 10.5       | 3.2 | 225           |
| 8000      | 3632      | 3632 | 9.2        | 2.8 | 250           |
| 10000     | 4540      | 4540 | 7.9        | 2.4 | 310           |
| 12000     | 5448      | 5448 | 6.6        | 2   | 355           |
| 15000     | 6810      | 6810 | 5.9        | 1.8 | 420           |



**LIGHTEST, MOST COMPACT 15K WINCH IN THE INDUSTRY**



**INCLUDES 15' RECOVERY STRAP**

# SEC12 & SEC95

## PROVEN WINCH DESIGN, UNMATCHED VALUE

Heavy duty series wound motors and rugged planetary gear sets are the backbone of Mile Marker. With robust controls and a fully sealed solenoid and body, the SEC12 and SEC95 are proven winches at an unmatched value.



\*Steel Cable 76-50251BW  
Synthetic Rope 76-53251BW



\*Steel Cable 76-50246BW  
Synthetic Rope 76-53246BW

### SPECIFICATIONS (12K):

|                                |   |
|--------------------------------|---|
| Rated Line Pull                | 12000 lbs (5443 kg)   |
| Gear Train                     | 3 Stage planetary   |
| Gear Ratio                     | 294:1   |
| Motor                          | Series wound, 4.9 hp (3.6 kw),<br>12 Volt, 24 Volt available    |
| Remote                         | Power in, Power out with 12'<br>cable (3.7 m)                   |
| Dimensions (LxWxH)             | 20.8" X 6.3" X 7.8"<br>(528 mm X 161 mm X 200 mm)               |
| Steel Cable                    | 3/8" X 100' (9.5 mm X 30.5 m)<br>(14,400 lb. breaking strength) |
| Synthetic Rope                 | 3/8" X 92' (9.5 mm X 28 m)<br>(18,078 lb. breaking strength)    |
| Drum Size<br>Diameter X Length | 2.6" X 8.3" (67 mm X 212 mm)                                    |
| Net Weight<br>Synthetic Rope   | 48 lbs (30.3 kg)  |
| Net Weight<br>Steel Cable      | 67 lbs (41.7 kg)  |
| Bolt Pattern                   | 4 bolt pattern, 4.5" x 10"<br>(114.3 mm X 254 mm)               |

### PERFORMANCE (12K):

| Line Pull  | Line Speed | Motor Current |
|------------|------------|---------------|
| lb kg      | fpm mpm    | amps @ 12 V   |
| 0 0        | 16.4 5     | 85            |
| 4000 1816  | 8.8 2.7    | 160           |
| 6000 2724  | 7.5 2.3    | 191           |
| 8000 3632  | 6.7 2      | 235           |
| 10000 4540 | 5.6 1.7    | 270           |
| 12000 5448 | 4.9 1.5    | 320           |

### SPECIFICATIONS (9.5K):

|                                |   |
|--------------------------------|---|
| Rated Line Pull                | 9500 lbs (4309 kg)  |
| Gear Train                     | 3 Stage planetary   |
| Gear Ratio                     | 210:1   |
| Motor                          | Series wound, 4.9 hp (3.6 kw),<br>12 Volt, 24 Volt available    |
| Remote                         | Power in, Power out with 12'<br>cable (3.7 m)                   |
| Dimensions (LxWxH)             | 20.8" X 6.3" X 7.8"<br>(528 mm X 161 mm X 200 mm)               |
| Steel Cable                    | 3/8" X 100' (9.5 mm X 30.5 m)<br>(14,400 lb. breaking strength) |
| Synthetic Rope                 | 3/8" X 92' (9.5 mm X 28 m)<br>(18,078 lb. breaking strength)    |
| Drum Size<br>Diameter X Length | 2.64" X 8.7" (67 mm X 222mm )                                   |
| Net Weight<br>Synthetic Rope   | 48 lbs (30.3 kg)  |
| Net Weight<br>Steel Cable      | 67 lbs (41.7 kg)  |
| Bolt Pattern                   | 4 bolt pattern, 4.5" x 10"<br>(114.3 mm X 254 mm)               |

### PERFORMANCE (9.5K):

| Line Pull | Line Speed | Motor Current |
|-----------|------------|---------------|
| lb kg     | fpm mpm    | amps @ 12 V   |
| 0 0       | 21 6.4     | 86            |
| 2000 908  | 11 3.4     | 150           |
| 4000 1816 | 8.8 2.7    | 205           |
| 6000 2724 | 7.5 2.3    | 235           |
| 8000 3632 | 6 1.8      | 252           |
| 9500 4313 | 4.3 1.3    | 330           |

### FEATURES:

- 4.9 HP Series Wound Motor
- Rugged Planetary Gear Sets
- Clockable Gear Housing
- Fast Line Speeds
- Submersible, 400 Amp Solenoid
- Automatic Load Holding Brake
- Corrosion Resistant Stainless Steel Fasteners
- 100' Steel Cable or 92' Synthetic Rope
- Aluminum Hawse or Roller Fairlead
- Waterproof
- Handheld Remote Control

# SEC8

## WORKING RANGE PERFORMANCE

The SEC8 is light and affordable for the standard off road vehicle. With robust controls and a fully sealed solenoid and body, Mile Marker redefines performance in the 8,000 pound winch class.



**Steel Cable**  
77-50141W



**Synthetic Rope**  
77-53141W

### SPECIFICATIONS (8K):

|                                |   |
|--------------------------------|---|
| Rated Line Pull                | 8000 lbs (3629 kg)  |
| Gear Train                     | 3 Stage planetary   |
| Gear Ratio                     | 150:1   |
| Motor                          | Series wound, 4.9 hp (3.6 kw), 12 V<br>24 Volt available        |
| Remote                         | Power in, Power out with 12' cable (3.7 m)                      |
| Dimensions (LxWxH)             | 20.8" X 6.3" X 7.8"<br>(528 mm X 161 mm X 200 mm)               |
| Steel Cable                    | 5/16" X 100' (7.9 mm X 30.5 m)<br>(9,800 lb. breaking strength) |
| Synthetic Rope                 | 5/16" X 92' (7.9 mm X 28 m)<br>(13,228 lb. breaking strength)   |
| Drum Size<br>Diameter X length | 2.5" X 8.3" (63 mm X 222 mm)                                    |
| Net Weight<br>Synthetic Rope   | 49 lbs (37 kg)  |
| Net Weight<br>Steel Cable      | 63 lbs (31.7 kg)  |
| Bolt Pattern                   | 4 bolt pattern, 4.5" x 10"<br>(114.3 mm X 254 mm)               |

### FEATURES:

- 4.9 HP Series Wound Motor
- Rugged Planetary Gear Sets
- Clockable Gear Housing
- Fast Line Speeds
- Submersible, 400 Amp Solenoid
- Automatic Load Holding Brake
- Corrosion Resistant Stainless Steel Fasteners
- 100' Steel Cable or 92' Synthetic Rope
- Aluminum Hawse or Roller Fairlead
- Waterproof
- Handheld Remote Control

### PERFORMANCE: (8K)

| Line Pull |      | Line Speed |      | Motor Current |
|-----------|------|------------|------|---------------|
| lb        | kg   | fpm        | mpm  | amps @ 12 V   |
| 0         | 0    | 38.1       | 11.6 | 70            |
| 2000      | 908  | 14.1       | 4.3  | 136           |
| 4000      | 1816 | 12.5       | 3.8  | 198           |
| 6000      | 2724 | 9.8        | 3    | 264           |
| 8000      | 3632 | 8.2        | 2.5  | 284           |



# TRAILER & UTILITY WINCHES

## COMPACT SIZE, POWERFUL PULL

The SEC4500 defines fast line speeds and low amperage draw for your large side by side or UTV. The 2000 lb. utility winches features a wireless remote control and a high output motor.



76-50115BW

### FEATURES (4.5K):

- 3.7 HP Series Wound Motor
- Rugged Planetary Gear Sets
- Clockable Gear Housing
- Fast Line Speeds
- Submersible, 250 Amp Solenoid
- Automatic Load Holding Brake
- Corrosion Resistant Stainless Steel Fasteners
- 79' Steel Cable
- Roller Fairlead
- Waterproof
- Handheld Remote Control
- Includes Tow Strap
- Includes Mounting Plate

### SPECIFICATIONS (4.5K):

|                             |   |
|-----------------------------|---|
| Rated Line Pull             | 4500 lbs (2041 kg)  |
| Gear Train                  | 3 Stage planetary   |
| Gear Ratio                  | 150:1   |
| Motor                       | 12 Volt DC, input power 3.7hp (2.7 kw)<br>24 Volt available |
| Remote                      | Power in, Power out with 12' cable (3.7 m)                  |
| Dimensions (LxWxH)          | 17.3" X 6.3" X 7.8"<br>(440 mm X 161 mm X 200 mm)           |
| Steel Cable                 | 1/4" X 79' (6.3 mm X 24 m)<br>(7,000 lb. breaking strength) |
| Drum Size Diameter X Length | 2.5" X 5.5" (63 mm X 140 mm)                                |
| Net Weight Steel Cable      | 49 lbs (23 kg)<br>(with mounting plate)                     |
| Bolt Pattern                | 4 bolt pattern 6.5" X 4.5"<br>(165.9 mm X 114.3 mm)         |

### PERFORMANCE (4.5K):

| Line Pull | Line Speed | Motor Current |
|-----------|------------|---------------|
| lb kg     | fpm mpm    | amps @ 12 V   |
| 0 0       | 38.1 11.6  | 70            |
| 1500 681  | 17.1 5.2   | 125           |
| 3000 1362 | 14.1 4.3   | 160           |
| 4500 2043 | 11.8 3.6   | 205           |



76-50200

### FEATURES (2K):

- High Output Motor
- Automatic Load Holding Dynamic Brake
- Fast Line Speeds
- 50' Steel Cable
- Roller Fairlead
- All Metal Planetary Gearing
- Free Spooling
- Wireless Remote Control

### SPECIFICATIONS (2K):

|                             |   |
|-----------------------------|---|
| Rated Line Pull             | 2000 lbs (907 kg)                                     |
| Gear Train                  | 2 Stage planetary                                     |
| Gear Ratio                  | 163:1   |
| Motor                       | Permanent Magnet<br>12 Volt 1.9 hp (1.4 kw)           |
| Remote                      | Wireless remote control                               |
| Dimensions (LxWxH)          | 11.2" X 4.5" X 4.2"<br>(285.5 mm X 113 mm X 107.5 mm) |
| Steel Cable                 | 5/32" X 50' (4 mm X 15.2 m)                           |
| Drum Size Diameter X Length | 1.2" X 2.8" (32 mm X 72 mm)                           |
| Net Weight                  | 16 lb. (7.2 kg)                                       |
| Bolt Pattern                | 2 bolt pattern 1.8" X 3"<br>(48 mm X 76 mm)           |

### PERFORMANCE (2K):

| Line Pull | Line Speed | Motor Current |
|-----------|------------|---------------|
| lb kg     | fpm mpm    | amps @ 12 V   |
| 0 0       | 14.0 4.3   | 14            |
| 1000 454  | 9.0 2.7    | 60            |
| 1500 680  | 7.5 2.3    | 90            |
| 2000 908  | 5.9 1.8    | 115           |

# POWERSPORTS WINCHES

**WATERPROOF**  
Marine grade connectors at the control and solenoid



**HIGH OUTPUT MOTOR**  
These winches pack enough punch to take on the most daunting task

## COMPACT POWER

The Mile Marker Powersports winch line packs powerful recovery into a rugged, compact size. Your ATV or UTV can always rely on our planetary gear systems and high output motor for your most daunting off road pulls. No weather worries with completely sealed units to the IP68 Standard.

## CHOOSE THE WINCH FOR YOU

We offer 5000, 3500, or 2500 pound winches to best suit your vehicle. Equipped with synthetic rope or steel cable.



**FASTEST, MOST POWERFUL**



**RUGGED COMPACT SIZE**

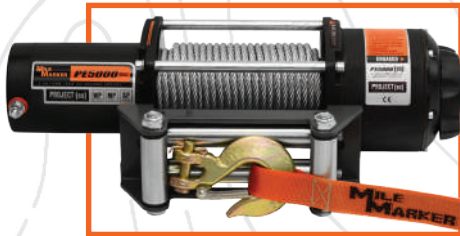


**COMPLETELY ELEMENT SEALED**

# PE5000

## PACK THE POWER

The PE5000 slams raw power into a lightweight, compact design for your ATV/UTV. Metal planetary gear systems and a fully waterproof solenoid lets you winch wherever you ride.



### Steel Cable

77-50120W



### Synthetic Rope

77-53120W

## SPECIFICATIONS (5K):

|                                |   |
|--------------------------------|---|
| Rated Line Pull                | 5000 lbs (2267.9 kg)  |
| Gear Train                     | 3 Stage planetary   |
| Gear Ratio                     | 165:1   |
| Motor                          | 12 Volt DC, input power 3.8hp<br>24 Volt available            |
| Remote                         | Power in, Power out with 12' cable<br>(3.7 m)                 |
| Winch Dimensions<br>(LxWxH)    | 15.6" X 4.6" X 4.7"<br>(397 mm X 117 mm X 119.8 mm)           |
| Steel Cable                    | 1/4" X 79' (6.3 mm X 24 m)<br>(5,600 lb. breaking strength)   |
| Synthetic Rope                 | 1/4" X 50' (6.3 mm X 15.2 m)<br>(5,071 lb. breaking strength) |
| Drum Size<br>Diameter X Length | 2" X 5.4" (51 mm X 137.5 mm)                                  |
| Net Weight<br>Synthetic Rope   | 19.5 lbs (8.6 kg)   |
| Net Weight<br>Steel Cable      | 23.7 lbs (10.8 kg)  |
| Bolt Pattern                   | 4 bolt pattern 3" X 6.6"<br>(76 mm X 168 mm)                  |

## FEATURES:

- 3.8 HP Permanent Magnet Motor
- All Metal Planetary Gearing
- Submersible, 250 Amp Solenoid
- Automatic Load Holding Brake
- Center Focused Drum
- Fast Line Speeds
- 79' Steel Cable or  
50' Synthetic Rope
- Aluminum Hawse or Roller Fairlead
- Waterproof
- Handheld Remote Control

## PERFORMANCE (5K):

| Line Pull |      | Line Speed<br>12V |     | Motor Current 12V |
|-----------|------|-------------------|-----|-------------------|
| lbs       | kgs  | fpm               | mpm | amp               |
| 0         | 0    | 20.7              | 6.3 | 34                |
| 2000      | 908  | 15.1              | 4.6 | 135               |
| 3000      | 1362 | 11.5              | 4   | 155               |
| 4000      | 1816 | 10.5              | 3.2 | 210               |
| 5000      | 2270 | 9.2               | 2.8 | 250               |



# PE3.5 & PE2.5



**PE3.5**  
Steel Cable  
77-50112BW



**PE3.5**  
Synthetic Rope  
77-53112BW



**PE2.5**  
Steel Cable  
77-50105BW

## FEATURES:

- 2.4 HP Permanent Magnet Motor
- All Metal Planetary Gearing
- Submersible, 200 Amp Solenoid
- Automatic Load Holding Brake
- Center Focused Drum
- Fast Line Speeds
- 42' Steel Cable or 50' Synthetic Rope
- Aluminum Hawse or Roller Fairlead
- Waterproof
- Handheld and Handlebar Controls

## SPECIFICATIONS:

|                             |       |   |
|-----------------------------|-------|---|
| Rated Line Pull             | PE3.5 | 3500 lbs (1589 kg)  |
| Rated Line Pull             | PE2.5 | 2500 lbs (1135 kg)  |
| Gear Train                  | All   | 2 Stage planetary   |
| Gear Ratio                  | ALL   | 242:1   |
| Motor                       | PE3.5 | 2.4 hp (1.8 kw), 12 V DC                                    |
| Motor                       | PE2.5 | 2.4 hp (1.8 kw)   |
| Remote                      | All   | Power in, Power out with 12' cable (3.7 m)                  |
| Dimensions (LxWxH)          | PE3.5 | 13.5" X 4.5" X 4.3" (344 mm X 116 mm X 108 mm)              |
| Dimensions (LxWxH)          | PE2.5 | 13.2" X 4.6" X 4.3" (334 mm X 116 mm X 108 mm)              |
| Steel Cable                 | PE3.5 | 7/32" X 42' (5.5 mm X 12.7 m) (5,600 lb. breaking strength) |
| Steel Cable                 | PE2.5 | 3/16" X 42' (4.7 mm X 12.7 m) (5,600 lb. breaking strength) |
| Synthetic Rope              | PE3.5 | 7/32" X 50' (5.5 mm X 15.2 m) (5,071 lb. breaking strength) |
| Drum Size Diameter X Length | ALL   | 2" X 3.1" (50 mm X 80 mm)                                   |
| Net Weight Steel Cable      | PE3.5 | 17.3 lbs (7.8 kg)   |
| Net Weight Steel Cable      | PE2.5 | 15.1 lbs (6.8 kg)   |
| Net Weight Synthetic rope   | PE3.5 | 14.3 lbs (6.4 kg)   |
| Bolt Pattern                | All   | 4 Bolt pattern, 4.8" X 3" (124 mm X 76 mm)                  |

## PERFORMANCE: PE3.5

| Line Pull | Line Speed | Motor Current |     |             |
|-----------|------------|---------------|-----|-------------|
| lb        | kg         | fpm           | mpm | amps @ 12 V |
| 0         | 0          | 18            | 5.5 | 22          |
| 1000      | 454        | 14.8          | 4.5 | 82          |
| 2000      | 908        | 12.5          | 3.8 | 145         |
| 3000      | 1362       | 10.8          | 3.3 | 225         |
| 3500      | 1589       | 9.8           | 3   | 250         |

## PERFORMANCE: PE2.5

| Line Pull | Line Speed | Motor Current |     |             |
|-----------|------------|---------------|-----|-------------|
| lb        | kg         | fpm           | mpm | amps @ 12 V |
| 0         | 0          | 23            | 7   | 35          |
| 1000      | 454        | 18            | 5.5 | 100         |
| 1500      | 681        | 16            | 4.8 | 128         |
| 2000      | 908        | 14            | 4.2 | 150         |
| 2500      | 1135       | 12            | 3.6 | 190         |



# HYDRAULIC WINCHES

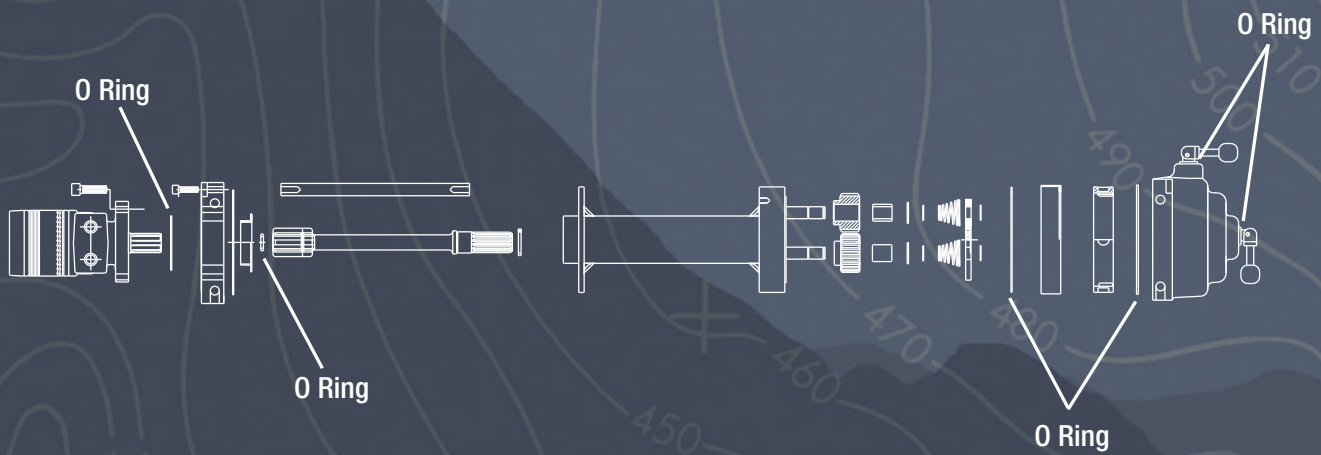


## LEGENDARY POWER

The serious off roaders dream winch, Mile Marker hydraulics utilize the power steering pump as the power source instead of a battery. The result? Continuous winching. Quality winching. Uninterrupted winching. Legendary power.

## CHOOSE THE WINCH FOR YOU

The H and HI series winches run off the power steering of standard vehicles. Choose among 9,000, 10,500 and 12,000 pound capacity winches. For other applications, see our low pressure winch, tow truck winch, and 18K heavy duty and wrecker winch.



## CONSTRUCTION

Internally sealed winches with O rings in every critical spot make all our hydraulics completely element proof. Six seals keep any contaminants outside. Using the relief valve as a built in governor, it is impossible to overload or overwork the pump of your vehicle's power steering, the source of the winch's legendary power.

## INSTALLATION

Vehicle specific adapter kits are required for most applications to connect the winch to the pump (see page 17)



34 SERIES



35 SERIES



BUILT TO LAST



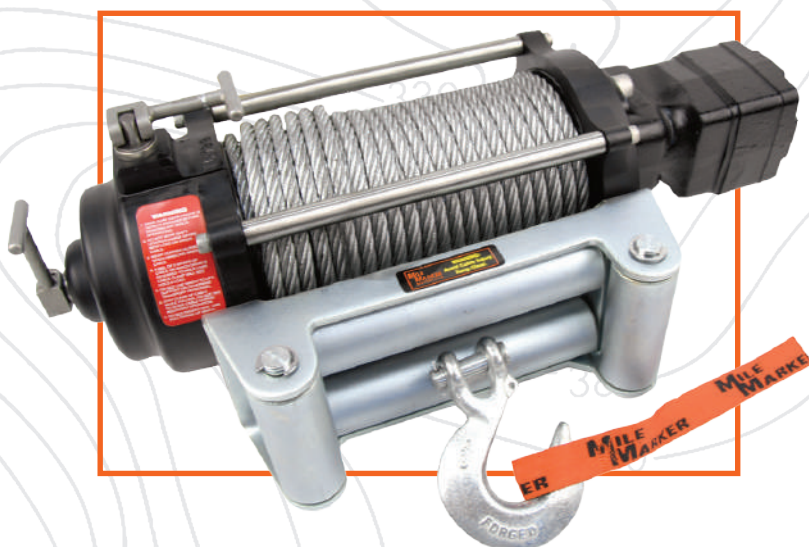
CONTINUOUS USE



ELEMENT PROOF

# H SERIES

Mile Marker's H Series hydraulics mount to either the front or the rear of the vehicle as a permanent or detachable winch. The system is independent from its solenoid control valve to allow for these mounting options. Most applications require a 34 series kit to fit the winch to your vehicle. The kit includes important components for installation.



## H9000

9,000 LB (4082 kg)  
70-50080C

## H10500

10,500 LB (4763 kg)  
70-50050C

## H12000

12,000 LB (5443 kg)  
70-52000C

### FEATURES:

- 100% Duty Cycle
- 2 Speed
- Power Steering Pump Powered
- Submersible
- Stainless Steel Tie Bars and Fasteners
- Ductile Iron Body (H12000 Only)
- Reversible Mounting (H9000 & H10500 Only)
- 3 Mounting Positions (H12000 Only)
- Mechanical Lock
- Corrosion Resistant
- 100' Steel Cable
- Roller Fairlead
- Free Spooling

### SPECIFICATIONS:

|   |  |
|---|--|
| <b>Gear Train</b>                       | Planetary  |
| <b>Gear Ratio</b>                       | 6:1  |
| <b>Motor</b>                            | 9k: 14 cubic inch; 10.5k: 17.9 cubic inch; 12k: 19.5 cubic inch<br>24V available |
| <b>Remote</b>                           | Not included   |
| <b>Steel Cable</b>                      | 3/8" X 100'<br>(9.5 mm X 30.5 m)   |
| <b>Dimensions (LxWxH)</b>               | 22.5" X 6.5" X 7.8"<br>(571.5 mm X 165.1 mm X 198.1 mm)                          |
| <b>Drum Size Diameter X Length</b>      | 2.5" X 9" (63.5 mm X 228.6 mm)   |
| <b>Power Steering Min. Requirements</b> | 3.5 GPM @ 1500 psi<br>(13.2 l/min @ 103.4 bars)                                  |
| <b>Net Weight</b>                       | H9000/H10500: 93 lbs (42.2 kgs)<br>H12000: 101 lbs (45.8 kgs)                    |
| <b>Bolt Pattern</b>                     | 4 bolt pattern, 4.5" X 10"<br>(114.3 mm X 254 mm)                                |

### PERFORMANCE:

#### 9000

3.5 GPM @ 1500 PSI (13.25 L/m @ 103.4 bars)

|                              |       |       |       |       |
|------------------------------|-------|-------|-------|-------|
| Layer of Cable               | 1     | 2     | 3     | 4     |
| Line speed - low gear (FPM)  | 6.1   | 7.4   | 8.8   | 10.5  |
| Rated pull (lbs.)            | 9,000 | 7,300 | 6,200 | 5,400 |
| Line speed - high gear (FPM) | 33.6  | 38.4  | 48    | 57    |
| Rated pull (lbs.)            | 1,500 | 1,200 | 1,000 | 900   |

#### 10500

3.5 GPM @ 1500 PSI (13.25 L/m @ 103.4 bars)

|                              |        |       |       |       |
|------------------------------|--------|-------|-------|-------|
| Layer of Cable               | 1      | 2     | 3     | 4     |
| Line speed - low gear (FPM)  | 5.6    | 6.4   | 7.4   | 8.5   |
| Rated pull (lbs.)            | 10,500 | 8,500 | 7,400 | 6,400 |
| Line speed - high gear (FPM) | 31     | 36    | 42    | 48    |
| Rated pull (lbs.)            | 1,600  | 1,300 | 1,200 | 1,000 |

#### 12000

3.5 GPM @ 1500 PSI (13.25 L/m @ 103.4 bars)

|                              |        |       |       |       |
|------------------------------|--------|-------|-------|-------|
| Layer of Cable               | 1      | 2     | 3     | 4     |
| Line speed - low gear (FPM)  | 5.6    | 6.4   | 7.4   | 8.5   |
| Rated pull (lbs.)            | 12,000 | 9,400 | 8,200 | 7,000 |
| Line speed - high gear (FPM) | 31     | 36    | 42    | 48    |
| Rated pull (lbs.)            | 2,000  | 1,550 | 1,350 | 1,150 |



34 SERIES ADAPTER KIT MAY BE REQUIRED  
SEE APPLICATION CHART ON PAGE 17

# HI SERIES

The Mile Marker HI Series hydraulic winch is designed for permanent mounting on the front of your vehicle. The solenoid control valve is integrated into the winch. A 35 Series adapter kit is needed to adapt to your power steering system.



## HI9000

9,000 LB (4082 kg)  
75-50085C

## HI10500

10,500 LB (4763 kg)  
75-50050C

## HI12000

12,000 LB (5443 kg)  
75-52000C

### FEATURES:

- 100% Duty Cycle
- 2 Speed
- Power Steering Pump Powered
- Submersible
- Stainless Steel Tie Bars and Fasteners
- Ductile Iron Body (HI12000 Only)
- Reversible Mounting (HI9000 & HI10500 Only)
- 3 Mounting Positions (HI12000 Only)
- Mechanical Lock
- Corrosion Resistant
- 100' Steel Cable
- Roller Fairlead
- Free Spooling
- Handheld Remote Control

### SPECIFICATIONS:

|                                     |  |
|-------------------------------------|--|
| Gear Train:                         | Planetary  |
| Gear Ratio                          | 6:1  |
| Motor                               | 9k: 14 cubic inch; 10.5k: 17.9 cubic inch; 12k: 19.5 cubic inch<br>24V available |
| Remote                              | Not included   |
| Steel Cable                         | 3/8" X 100' (9.5 mm X 30.5 m)  |
| Dimensions                          | 21.9" X 7.8" HI9000<br>22.1" X 7.8" HI10500<br>22.5" X 7.8" HI12000              |
| Drum Size<br>Diameter X Length      | 2.5" X 9" (63.5 mm X 228.6 mm)   |
| Power Steering<br>Min. Requirements | 3.5 GPM @ 1500 psi<br>(13.2 l/min @ 103.4 bars)                                  |
| Net weight                          | HI9000/HI10500: 103 lbs (47 kgs)<br>HI12000: 110 lbs (50 kgs)                    |
| Bolt Pattern                        | 4 bolt pattern, 4.5" X 10"<br>(114.3 mm X 254 mm)                                |

### PERFORMANCE:

#### 9000

3.5 GPM @ 1500 PSI (13.25 L/m @ 103.4)

|                              |       |       |       |       |
|------------------------------|-------|-------|-------|-------|
| Layer of Cable               | 1     | 2     | 3     | 4     |
| Line speed - low gear (FPM)  | 6.1   | 7.4   | 8.8   | 10.5  |
| Rated pull (lbs.)            | 9,000 | 7,300 | 6,200 | 5,400 |
| Line speed - high gear (FPM) | 33.6  | 38.4  | 48    | 57    |
| Rated pull (lbs.)            | 1,500 | 1,200 | 1,000 | 900   |

#### 10500

3.5 GPM @ 1500 PSI (13.25 L/m @ 103.4)

|                              |        |       |       |       |
|------------------------------|--------|-------|-------|-------|
| Layer of Cable               | 1      | 2     | 3     | 4     |
| Line speed - low gear (FPM)  | 5.6    | 6.4   | 7.4   | 8.5   |
| Rated pull (lbs.)            | 10,500 | 8,500 | 7,400 | 6,400 |
| Line speed - high gear (FPM) | 31     | 36    | 42    | 48    |
| Rated pull (lbs.)            | 1,600  | 1,300 | 1,200 | 1,000 |

#### 12000

3.5 GPM @ 1500 PSI (13.25 L/m @ 103.4)

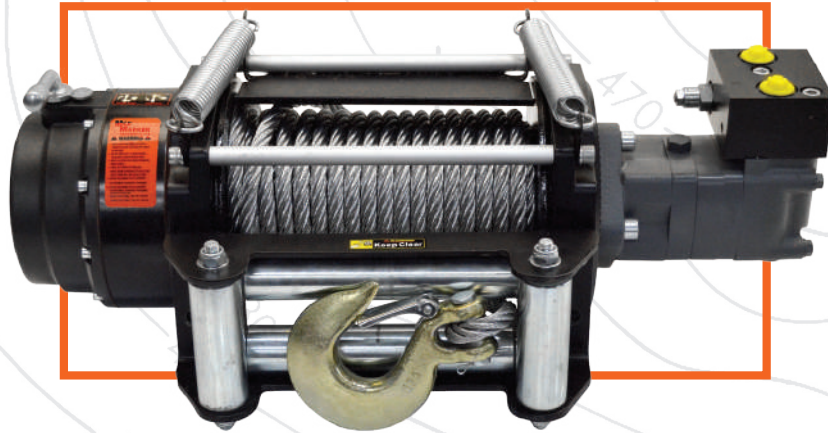
|                              |        |       |       |       |
|------------------------------|--------|-------|-------|-------|
| Layer of Cable               | 1      | 2     | 3     | 4     |
| Line speed - low gear (FPM)  | 5.6    | 6.4   | 7.4   | 8.5   |
| Rated pull (lbs.)            | 12,000 | 9,400 | 8,200 | 7,000 |
| Line speed - high gear (FPM) | 31     | 36    | 42    | 48    |
| Rated pull (lbs.)            | 2,000  | 1,550 | 1,350 | 1,150 |



35 SERIES ADAPTER KIT IS REQUIRED  
SEE APPLICATION CHART ON PAGE 17

# 18K ONE SPEED HYDRAULIC WINCH

Our most powerful hydraulic winch, the 18K winch is designed for heavy duty, commercial, utility and wrecker applications.



70-58010C

## SPECIFICATIONS:

|  |  |
|--|--|
| <b>Gear Train</b>                      | Planetary, hardened steel gear   |
| <b>Gear Ratio</b>                      | 36:01  |
| <b>Motor</b>                           | 7.6 cubic inch (124.5 cubic centimeters)   |
| <b>Remote</b>                          | Not included   |
| <b>Dimensions (LxWxH)</b>              | 25.8" X 8.4" X 9.6"<br>(656 mm X 214 mm X 245 mm)  |
| <b>Steel Cable</b>                     | 1/2" X 75' (12.7 mm 22 m)<br>Nominal breaking strength = 26,600 lbs                              |
| <b>Drum Size<br/>Diameter X Length</b> | 4" X 9.9" (102 mm x 253 mm)  |
| <b>Net Weight</b>                      | 158.7 lbs (72 kgs)   |
| <b>Bolt Pattern</b>                    | 8 bolt pattern<br>Outer 6.5" X 12" (165 mm X 304.8 mm)<br>Inner 4.5" X 12" (114.3 mm X 304.8 mm) |

## FEATURES:

- Automatic Load Holding Brake
- Heavy Duty Engagement Clutch
- Submersible
- Stainless Steel Tie Bars and Fasteners
- Mechanical Lock
- Corrosion Resistant
- 75' Steel Cable
- Roller Fairlead
- Free Spooling

## PERFORMANCE:

High Speed Performance Specification (max 2030 PSI or 140BAR) (max 103.4 bars)

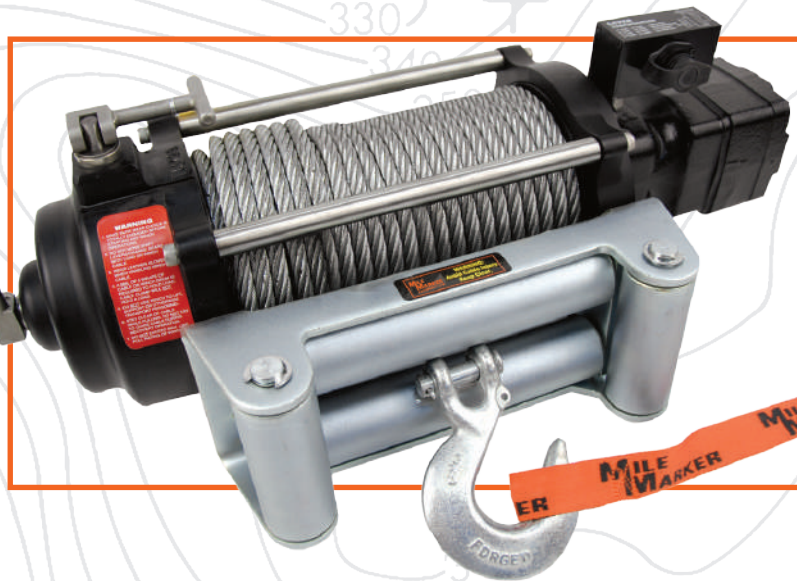
| LAYER | Rated Line Pull |      | Line Speed                |     |                          |     | Cable Capacity |      |
|-------|-----------------|------|---------------------------|-----|--------------------------|-----|----------------|------|
|       |                 |      | At 15 GPM<br>(56.8.1 L/m) |     | At 20 GPM<br>(75.71 L/m) |     | ft             | m    |
|       | lbs             | kgs  | fpm                       | mpm | fpm                      | mpm |                |      |
| 1     | 18000           | 8165 | 14.9                      | 4.5 | 17.4                     | 5.3 | 21             | 6.4  |
| 2     | 14727           | 6680 | 18.2                      | 5.5 | 21.3                     | 6.5 | 46             | 14   |
| 3     | 12461           | 5652 | 21.5                      | 6.6 | 25.6                     | 7.8 | 75             | 22.9 |

First Layer Performance

| Line Load | Pressure drop at<br>15 GPM (56.8.1<br>L/m) |      |      |      | Pressure drop at<br>20 GPM (75.71<br>L/m) |     |
|-----------|--|------|------|------|---|-----|
|           | lbs  | kgs  | psi  | bar  | psi                                       | bar |
| 0         | 0  | 113  | 7.8  | 592  | 40.8                                      |     |
| 3000      | 1361                                       | 345  | 23.8 | 763  | 52.6                                      |     |
| 6000      | 2722                                       | 599  | 41.3 | 940  | 64.8                                      |     |
| 9000      | 4082                                       | 867  | 59.8 | 1123 | 77.4                                      |     |
| 12000     | 5443                                       | 1137 | 78.4 | 1311 | 90.4                                      |     |
| 15000     | 6804                                       | 1446 | 99.7 | 1506 | 103.8                                     |     |
| 18000     | 8165                                       | 1617 | 11.5 | 1706 | 117.6                                     |     |

# LOW PRESSURE WINCH

Jeeps, mid sized trucks and sport utility vehicles – we designed a winch for you. If your vehicle produces less than 1500 PSI, you can still harness the legendary power of the Mile Marker hydraulic winch without upgrading the power steering equipment. The low pressure winch will pull 9,100 pounds at 1100 PSI.



75-50058C

## FEATURES:

- 2 Speed
- Integrated Solenoid Valve
- Submersible
- Stainless Steel Tie Bars and Fasteners
- Mechanical Lock
- Corrosion Resistant
- 100' Steel Cable
- Roller Fairlead
- Freespooling
- Handheld Remote Control

## SPECIFICATIONS:

|                                 |   |
|---------------------------------|---|
| Gear Train                      | Planetary   |
| Gear Ratio                      | 6:1   |
| Motor                           | 19.5 cubic inch                                       |
| Remote                          | Illuminated joystick remote, 12'                      |
| Steel Cable                     | 3/8" X 100' (nominal 14,400 lbs)<br>(9.5 mm X 30.5 m) |
| Drum Size:<br>Diameter X Length | 2.5" X 9" (63.5 mm X 228.6 mm)                        |
| Net Weight                      | 103 lbs (47 kgs)                                      |
| Bolt Pattern                    | 4 bolt pattern, 4.5" X 10"<br>(114.3 mm X 254 mm)     |

## PERFORMANCE:

| LAYER | LOAD  | PSI  | GPM |
|-------|-------|------|-----|
| 1     | 6700  | 900  | 3   |
| 1     | 7800  | 1000 | 3   |
| 1     | 9100  | 1100 | 3   |
| 1     | 10100 | 1200 | 3   |
| 1     | 11000 | 1300 | 3   |
| 1     | 12000 | 1400 | 3   |



35 SERIES ADAPTER KIT IS REQUIRED  
SEE APPLICATION CHART ON PAGE 17

# VEHICLE ADAPTER & VALVE KITS APPLICATION CHART

## 34 KIT FOR H SERIES WINCHES

### REMOTE SOLENOID VALVE

Includes: Remote control with 12' lead, all hoses and fittings, remote solenoid activated control valve, adapter kit for power steering pump (vehicle specific). Rated 7 gpm.

| PART NUMBER:              | APPLICATION:   |
|---------------------------|--|
| <b>AM GENERAL</b>         |  |
| 34-5010-17                | Valve Kit - H1 (civilian)                                    |
| <b>CHEVY/GMC/H2</b>       |  |
| 34-5020-14                | Valve Kit - '72-'87 GM C/K, '88-'91 RV Series                |
| 34-5010-15                | Valve Kit - '88-'98 GM C/K, '99 Tahoe/Suburban Silverado, H2 |
| 34-5020-16                | Valve Kit - '12-'16 GM 2500 & 3500 HD                        |
| 34-5010-13                | Valve Kit - GM S Series with 4.3L Vortec                     |
| <b>DODGE</b>              |  |
| 34-5020-22                | Valve Kit - Dodge Dakota 6 & 8 cylinder                      |
| 34-5010-20                | Valve Kit - Dodge Dakota 4 cylinder                          |
| 34-5020-23                | Valve Kit - '72-'93 Dodge Full Size                          |
| 34-5020-24                | Valve Kit - '94 Dodge Full Size                              |
| <b>FORD</b>               |  |
| 34-5010-09                | Valve Kit - '97 Ford F-150 Expedition                        |
| 34-5020-35                | Valve Kit - '05 Ford F-250/F-350/F-450/F-550 Excursion       |
| 34-5020-37                | Valve Kit - '11 Ford F-250/F-350/F-450/F-550 Excursion       |
| 34-5010-34                | Valve Kit - '99-'04 Ford F-250/F-350/F-450/F-550 Excursion   |
| 34-5020-06                | Valve Kit - '72-'77 Ford Full Size                           |
| 34-5020-07                | Valve Kit - '78-'96 Ford Full Size, '97-'98 F-250 & F-350    |
| 34-5010-07H               | Valve Kit - '78-'98 Ford Full Size (with hydro boost)        |
| 34-5020-04                | Valve Kit - '83-'92 Ford Ranger, '90-'94 Explorer            |
| 34-5020-05                | Valve Kit - '93-'96 Ford Ranger, '95-'96 Explorer            |
| 34-5020-10                | Valve Kit - '02 Ford Ranger/Sport Trac                       |
| 34-5020-38                | Valve Kit - Ford '12 Super Duty                              |
| 34-5020-38H               | Valve Kit - Ford '12 Super Duty with hydro boost             |
| <b>INTERNATIONAL</b>      |  |
| 34-5010-18                | Valve Kit - International Truck & Scout                      |
| <b>JEEP</b>               |  |
| 34-5010-50                | Valve Kit - Jeep Cherokee                                    |
| 34-5020-51                | Valve Kit - Jeep CJ Scrambler                                |
| 34-5020-55                | Valve Kit - Jeep YJ, TJ, JK & Rubicon                        |
| <b>LAND ROVER</b>         |  |
| 34-5010-45                | Valve Kit - Land Rover Discovery                             |
| <b>NISSAN</b>             |  |
| 34-5010-30                | Valve Kit - '86-'93 Nissan (except Pathfinder)               |
| 34-5010-31                | Valve Kit - '91-'95 Nissan Pathfinder, '94-'96 Truck         |
| <b>TOYOTA</b>             |  |
| 34-5020-41                | Valve Kit - '79-'02 Toyota                                   |
| <b>MEDIUM DUTY TRUCKS</b> |  |
| 34-5010-80                | Valve Kit - (Comes with size 8 hose, pressure relief)        |

## 35 KIT FOR HI SERIES WINCHES

### INTEGRATED SOLENOID VALVE

Adapts power steering pump to HI Series winches. Includes vehicle specific power steering pump fittings and adapters.

| PART NUMBER: | APPLICATION:                                       |
|--------------|--|
| 35-5020-17   | Adapter Kit - AM General Hummer H1                 |
| 35-5020-81   | Adapter Kit - Chevy 5500                           |
| 35-5020-16   | Adapter Kit - '12 GM 2500 & 3500 HD                |
| 35-5020-15   | Adapter Kit - GM Dodge International Chevrolet H2  |
| 35-5020-22   | Adapter Kit - '03 & up Durango                     |
| 35-5020-07   | Adapter Kit - Ford up to '98                       |
| 35-5020-34   | Adapter Kit - '97-'04 Ford F-150, '99-'04 Ford     |
| 35-5020-10   | Adapter Kit - Ford Sport Track Ford Ranger         |
| 35-5020-51   | Adapter Kit - Jeep                                 |
| 35-5020-45   | Adapter Kit - Land Rover                           |
| 35-5020-31   | Adapter Kit - Nissan                               |
| 35-5020-41   | Adapter Kit - Toyota                               |
| 35-5020-38H  | Adapter Kit - '12 Ford Super Duty with hydro boost |
| 35-5020-38   | Adapter Kit - '12 Ford Super Duty                  |
| 35-5020-37   | Adapter Kit - '11 Ford Super Duty                  |
| 35-5020-35   | Adapter Kit - '05-'10 Ford Super Duty              |
| 35-5020-36   | Adapter Kit - '07 Ford F-550 only                  |



**34 KIT**

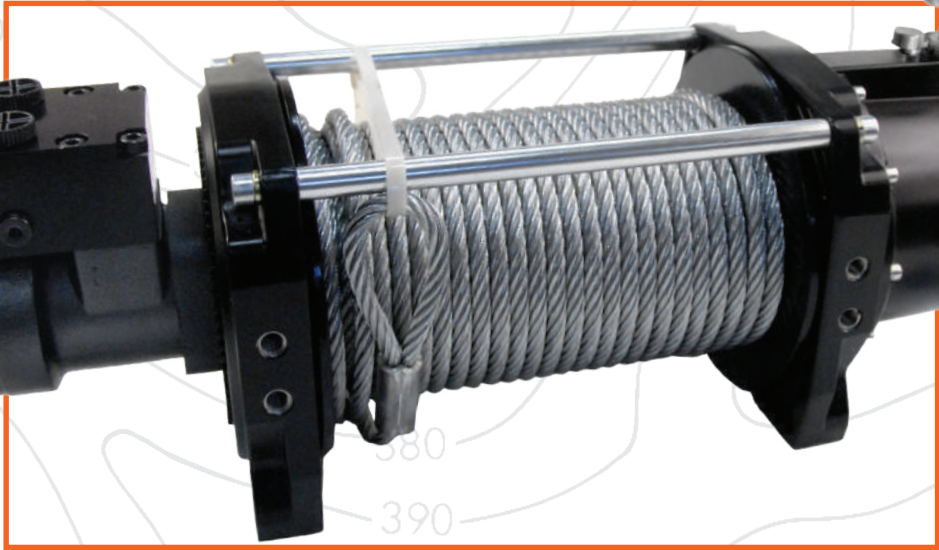
VEHICLE SPECIFIC APPLICATIONS



**35 KIT**

VEHICLE SPECIFIC APPLICATIONS

# TOW WINCH



## HS9000

70-59000C

### SPECIFICATIONS:

|                                  |  |
|----------------------------------|--|
| <b>Gear Train</b>                | Planetary, hardened steel gear   |
| <b>Gear Ratio</b>                | 27:1   |
| <b>Motor</b>                     | 4.9 cubic inches<br>(80.6 cubic centimeters)   |
| <b>Dimensions (LxWxH)</b>        | 23.6" X 8.4" X 9.2"<br>(600 mm X 214 mm X 235 mm)  |
| <b>Steel Cable</b>               | 3/8" X 100' (9.5 mm X 30.5 m)<br>(14,400 breaking strength)                                      |
| <b>Drum Size Diameter/Length</b> | 4" X 9.9" (102 mm X 253 mm)  |
| <b>Net Weight</b>                | 78 lbs   |
| <b>Bolt Pattern</b>              | 8 bolt pattern<br>Outer 6.5" X 12" (165 mm X 304.8 mm)<br>Inner 4.5" X 12" (114.3 mm X 304.8 mm) |
| <b>Duty Cycle</b>                | Intermittent per SAE J706 section 6.2<br>565' (172 m)  |

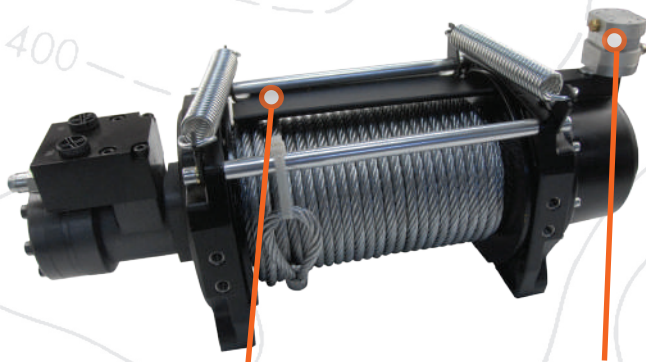
### FEATURES:

- Automatic Load Holding Brake
- Heavy Duty Engagement Clutch
- Submersible
- Mechanical Lock
- Corrosion Resistant
- Clockwise & Counter Clockwise Rotation
- Cable Tension Plate Sold Separately
- Clutch Kits Sold Separately
- Free Spooling

### PERFORMANCE:

| Line Pull | Line Speed |      |     |      |          |
|-----------|------------|------|-----|------|----------|
|           | lb         | kg   | fpm | mpm  | flow L/m |
| 0         | 0          | 27.3 | 8.3 | 59   |          |
| 4000      | 2270       | 25.5 | 7.8 | 56.3 |          |
| 8000      | 4086       | 26.2 | 8   | 56.2 |          |
| 9000      | 5448       | 26.2 | 8   | 55.6 |          |

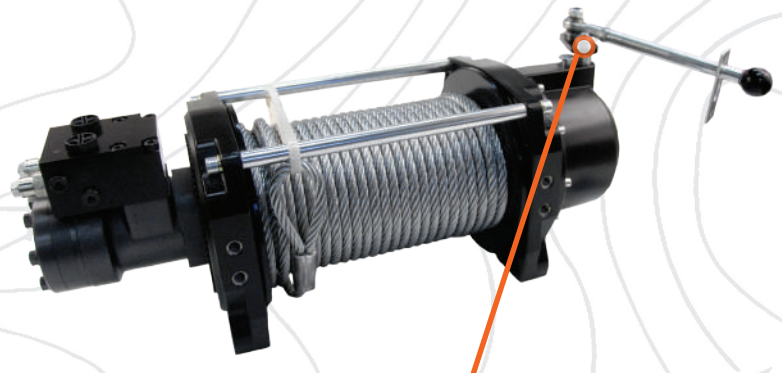




Winch Cable Tension Plate



Remote Pneumatic Clutch Kit



Remote Manual Clutch Kit

Winch Cable Tension Plate: 70591  
Remote Pneumatic Clutch Kit: 70593  
Remote Manual Clutch Kit: 70592

# MOUNTING SYSTEMS

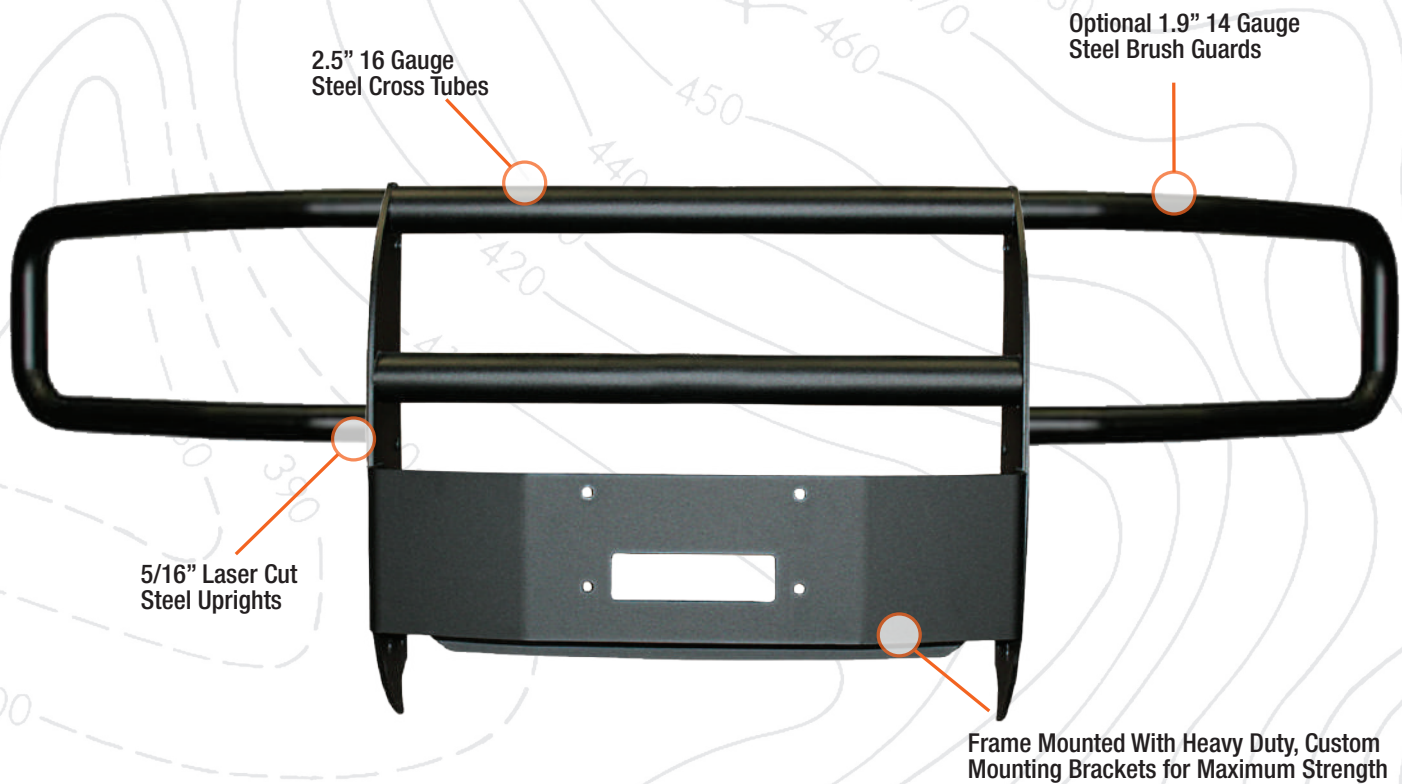
## ATV/UTV MOUNTS

The high quality choice for ATV and UTV winch mounts. Heavy duty steel construction and powder coating finishes enhance durability for these made to order custom mounts.



# TRUCK & SUV MOUNTS

Protect your vehicle and your winch with our custom built Xtreme II grille guards. All incorporate a 1/4 inch thick mounting steel plate and can accommodate up to a 15,000 pound Mile Marker winch. Optional "wraparound" brush guards can be added to finish out the protection. See chart on the next page for vehicle specific application guide.



Mount (With Brush Guard)

# TRUCK & SUV MOUNT APPLICATION GUIDE

| Year             | Make & Model                                 | Part Number & Mount Model                    |  |             |             |
|------------------|--|--|--|-------------|-------------|
|                  |  | Grille Guard<br>(up to 15,000 Lb<br>winches) | Grille Guard<br>(up to 15,000 Lb<br>winches) | Brush Guard | Brush Guard |
|                  |  | CHROME                                       | BLACK  | CHROME      | BLACK       |
| <b>CHEVROLET</b> |  |  |  |             |             |
| '15-'19          | Silverado 2500HD/3500 (7)                    | 50-35752C                                    | 50-35752                                     | 50-26736C   | 50-26736    |
| '11-'14          | Silverado 2500HD/3500 (7)                    | 50-35751C                                    | 50-35751                                     | 50-26751C   | 50-26751    |
| '16-'18          | Silverado 1500 (4) (7)                       | 50-35746C                                    | 50-35746                                     | 50-26736C   | 50-26736    |
| '14-'15          | Silverado 1500 (4) (7)                       | 50-35736C                                    | 50-35736                                     | 50-26736C   | 50-26736    |
| '07-'13          | Silverado 1500 (4) (7)                       | 50-35735C                                    | 50-35735                                     | 50-26735C   | 50-26735    |
| '07-'10          | Silverado/Classic 2500HD/3500<br>Classic (1) | 50-35738C                                    | 50-35738                                     | 50-26738C   | 50-26738    |
| <b>DODGE</b>     |  |  |  |             |             |
| '10-'19          | Ram 2500/3500 (3) (7) (10)                   | 50-35669C                                    | 50-35669                                     | 50-26669C   | 50-26669    |
| '07-'19          | Ram 3500-5500 Chassis Cab (7)                | 50-35665C                                    | 50-35665                                     | 50-26663C   | 50-26663    |
| '09-'18          | Ram 1500 classic body (3) (7) (10)           | 50-35671C                                    | 50-35671                                     | 50-26669C   | 50-26669    |
| '19- +           | Ram new body                                 |  | 50-35673                                     |             |             |
| <b>FORD</b>      |  |  |  |             |             |
| '10-'13          | Expedition (4) (6) (7)                       |  | 50-35619                                     |             |             |
| '17-'19          | Super Duty F250-550 (7) (8) (10)             | 50-35647C                                    | 50-35647                                     | 50-26647C   | 50-26647    |
| '11-'16          | Super Duty F250-550 (7) (10)                 | 50-35644C                                    | 50-35644                                     | 50-26644C   | 50-26644    |
| '08-'10          | Super Duty F250-F550 (2) (7)                 | 50-35642C                                    | 50-35642                                     | 50-26642C   | 50-26642    |
| '09-'13          | F150 (2) (4) (5) (6) (7)                     | 50-35639C                                    | 50-35639                                     | 50-26639C   | 50-26639    |
| '15-'17          | F150 (7) (8) (9) (10)                        | 50-35650C                                    | 50-35650                                     | 50-26650C   | 50-26650    |
| '06-'08          | F150 (1)                                     | 50-35637C                                    | 50-35637                                     | 50-26637C   |             |
| <b>GMC</b>       |  |  |  |             |             |
| '15-'19          | Sierra 2500HD/3500 (1) (7)                   | 50-35754C                                    | 50-35754                                     |             |             |
| '11-'14          | Sierra 2500HD/3500 (1) (7)                   | 50-35751C                                    | 50-35751                                     | 50-26751C   | 50-26751    |
| '14-'18          | Sierra 1500 (1) (4) (7)                      | 50-35749C                                    | 50-35749                                     |             |             |
| '07-'13          | Sierra 1500 (1) (4) (7)                      | 50-35745C                                    | 50-35745                                     |             |             |
| <b>NISSAN</b>    |  |  |  |             |             |
| '05-'12          | Pathfinder                                   |  | 50-35160                                     |             |             |

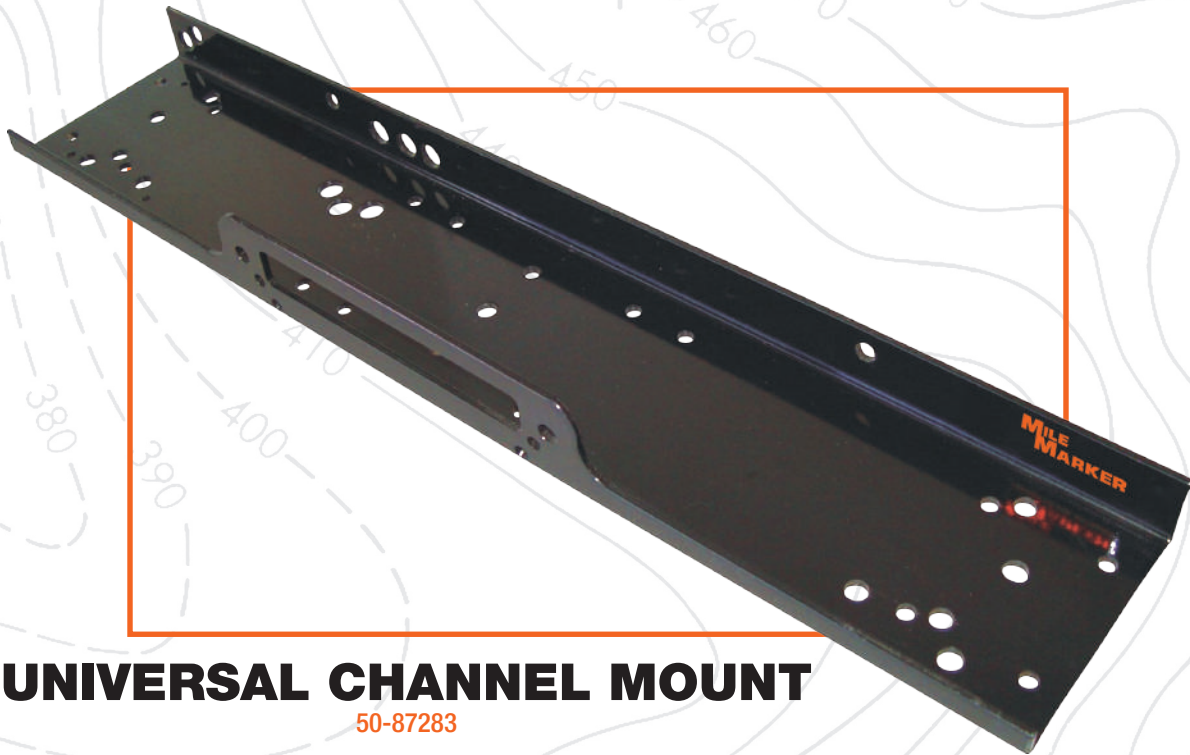
## Product Guide

1. Will not fit Denali Models or Denali Style Grilles
2. Will not fit Harley Davidson Models
3. Will not fit Ram Sport or Plastic Bumpers
4. Trimming may be required
5. Will not fit Lariat Limited
6. Will not fit F-150 EcoBoost
7. Interferes with front bumper sensors
8. May interfere with adaptive power steering
9. Will not work with 5.0 V8 Engines
10. Will interfere with OEM front facing cameras

# CHANNEL MOUNTS

## TRUCK/SUV MOUNTING SYSTEMS

The simple mounting solution for your vehicle, these mounts can be welded or bolted to adapt to almost any application. All are made from ¼" high quality steel and finished with a black powder coat.



### UNIVERSAL CHANNEL MOUNT

50-87283



### TRAILER MOUNT

60-50015



### JEEP WRANGLER (TJ/YJ)

60-50059

# RECEIVER MOUNTS



## DETACHABLE MOUNTING SYSTEMS

Mile Marker's receiver mounts are detachable, providing versatility needed to move winches from back to front or from vehicle to vehicle. Simply add quick disconnect wiring and you're ready to go (see page 32 for quick disconnect kits).



FULL SIZE CRADLE MOUNT  
60-06495



RECEIVER MOUNT DESIGNED  
TO WORK WITH ATV/UTV WINCHES  
51-06496



ATV/UTV RECEIVER MOUNT  
51-4677

# RECOVERY GEAR

Choose the right kit for you.  
You can count on Mile Marker recovery gear to overcome the elements.



## Off Road Recovery Kit: 19-00100

Everything you need to get out of a pinch. In the event of a snap, our winch dampener directs the cable to the ground and keeps you safe. Doubling as the bag, it houses a 15' recovery strap, gloves, 20K snatch block with grease fitting, and two powder coated shackles.



## ATV/UTV Recovery Kit: 19-00105

Push your ATV or UTV to the limits. Includes: two powder coated shackles, gloves, 8K snatch block, and two 8 ft. recovery straps. Housed in a durable carrying case with strap.



# NEW!

## Soft Shackle Kit 19-52043

Soft Shackle Kit contains a black, non-woven bag, 1 dark gray soft (synthetic rope) shackle with a black nylon sleeve and an additional sleeve replacement.



## Orange Powder Coated Shackles

3/4" Shackle 60-50134  
5/8" Shackle 60-50158

Orange powder coated shackles. Working load limit of 4.75 tons for the 3/4" shackles and 3.2 tons for the 5/8" shackles.



## Steel Hitch Receiver With D-Ring 60-65000C

Zinc coated, forged cast, solid steel hitch receiver fits standard Class III hitches with 2" receivers. Includes a 4-way hole system and a 3/4" orange shackle to meet any mounting needs.



## Recovery Gloves (XL) 30-19-G2

Protect your hands from cable burns and rope burns. Gloves feature cowhide palms, with SBR padding and neoprene lines for breathability and functional dexterity.



## Recovery Strap 15' & 30'

3" X 15' 19315  
3" X 30' 19330

15' and 30' Recovery Straps rated to 30,000 pound capacity.



## ATV Recovery Strap 8'

1" X 8' 19108

8' Recovery Strap rated to 7,200 pounds, with reinforced eyelet on each end.



## Tree Saver Strap 6'

4" X 6' 19406

Be conscious of your environment with this 6' Tree Saver strap. This Tree Saver Strap is rated to 50,000 pounds.



## Industrial Snatch Block 30K 60-50185

The Industrial Grade Snatch Block is rated up to 30,000 pounds of pull. Reduces the load on the winch by half to enable you to retrieve loads up to double your winch's capacity. Also allows winching from various angles. Features grease fitting and brass bushing.



## Heavy Duty Snatch Block 30K 60-50083

The Heavy Duty Snatch Block is rated up to 30,000 pounds. Reduces the load on the winch by half to enable you to retrieve loads up to double your winch's capacity. Also allows winching from various angles. Features grease fitting and brass bushing.



## ATV/UTV Snatch Block 8K 60-50105

This snatch block is rated up to 8,000 pounds. Reduces the load on the winch by half to enable you to retrieve loads up to double your winch's capacity. Also allows winching from various angles.



# WINCH ACCESSORIES



Wireless Remote  
7076

## WINCH WITHOUT WIRES

The plug & play wireless remote operates your winch from anywhere up to 50 feet away! Simply plug a receiver into your control box and you're ready to winch. Can adapt to most electric and hydraulic winches.



WIRELESS OPERATION UP TO 50 FT AWAY



ADAPTS TO MOST ELECTRIC WINCHES

## QUICK DISCONNECT KITS

Adding a quick disconnect kit allows for easy winch removal. Move your winch from the front to the back of your vehicle, or switch vehicles, whenever you need. Best used in conjunction with a receiver style mount.

### JEEP/TRUCK/SUV



Electric Front Quick Disconnect Kit  
76-93-54000

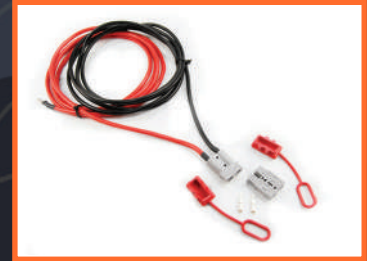


Electric Rear Quick Disconnect Kit  
76-93-53000

### POWERSPORTS



ATV/UTV Front Quick Disconnects  
93-53106



ATV/UTV Rear Quick Disconnects  
10' 93-53105 / 12' 93-53108

### HYDRAULIC



Hydraulic Front Quick Disconnect Kit  
70-54000



Hydraulic Rear Quick Disconnect Kit  
70-53000



Replacement Solenoid

PE2.5 & PE3.5 **77-50105-37**  
Full size winches **77-50141W-31**



Roller Fairlead Cover **8402**

This impact resistant cover protects your Mile Marker WH-10 roller fairlead from weather and debris while adding a finished look to the front of your vehicle.



Neoprene Winch Covers  
Wraps snugly around your winch for all weather protection

Fits most ATV winches **8505**  
Fits most full size winches **8506**



Roller Fairlead **WH-18**  
Works with 18,000 lb. winches



Roller Fairlead **WH-10**  
Universal roller fairlead works with 8000-15000 pound winches. Also fits winch mount bumpers.



Powersports Winch Rollers  
For winches 5000 pounds ONLY **WH-5**  
For winches 4500 pounds ONLY **WH-4**  
For winches 2500-3500 pounds **WH-2**  
For winches 2000 pounds ONLY **WH-1**



Aluminum Hawse Fairlead  
For use with synthetic rope (ATV/UTV) **19-52000**  
(PE5000) **19-52005**  
(Full Size) **19-53000**



Handlebar Remote **93-50106E**  
For use with Mile Marker ATV/UTV winches. Adjustable mount provides accessible control to your trail blazing ATV.



Electric & Hydraulic Remote **77-50141W-50**  
For use with Mile Marker electric winches with standard solenoids.



Winch Shackle Mount **60-12166**

Upgrades the conventional winch hook for a clean and sophisticated look on the front of the vehicle and an easy mount for your shackle. Mounts either a 5/8" or 3/4" shackle. Rubber construction will not rust or rattle in travel.



Replacement Cable  
5/16" X 100' **19-50010C**  
3/8" X 100' **19-50020C**  
Steel cable with removable hook.



Synthetic Rope  
**19-52038-100C \***  
3/8" X 92' Gray Rope Assembly (16,200 lbs. Min Break Force)  
**19-52516-100C \***  
5/16" X 92' Gray Rope Assembly (11,700 lbs. Min Break Force)  
**19-52014-50**  
1/4" X 50' Gray Rope Assembly (7,740 lbs. Min Break Force)  
**19-52316-50**  
3/16" X 50' Orange Rope Assembly (5,440 lbs. Min Break Force)

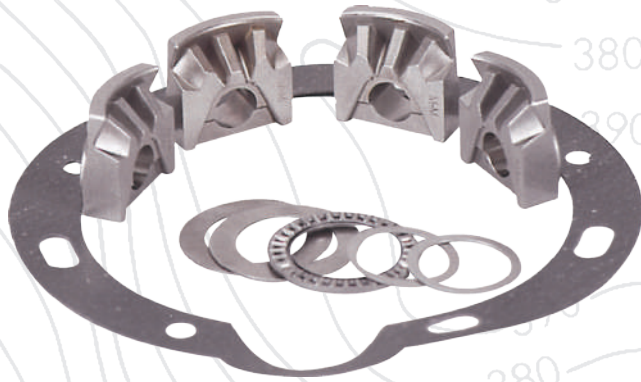


2000 lb. Winch Remote **76-50100-20**  
Fits most utility 12V winches

Attached hook included \*

# TRANSFER CASE CONVERSION KITS

For owners of full time 4WD vehicles, convert from 4WD to 2WD effortlessly. Conversion kits reduce wear and tear on your drivetrain, saving you money at the gas pump and providing years of trouble free service.



## FORD & GM 203 NEW PROCESS

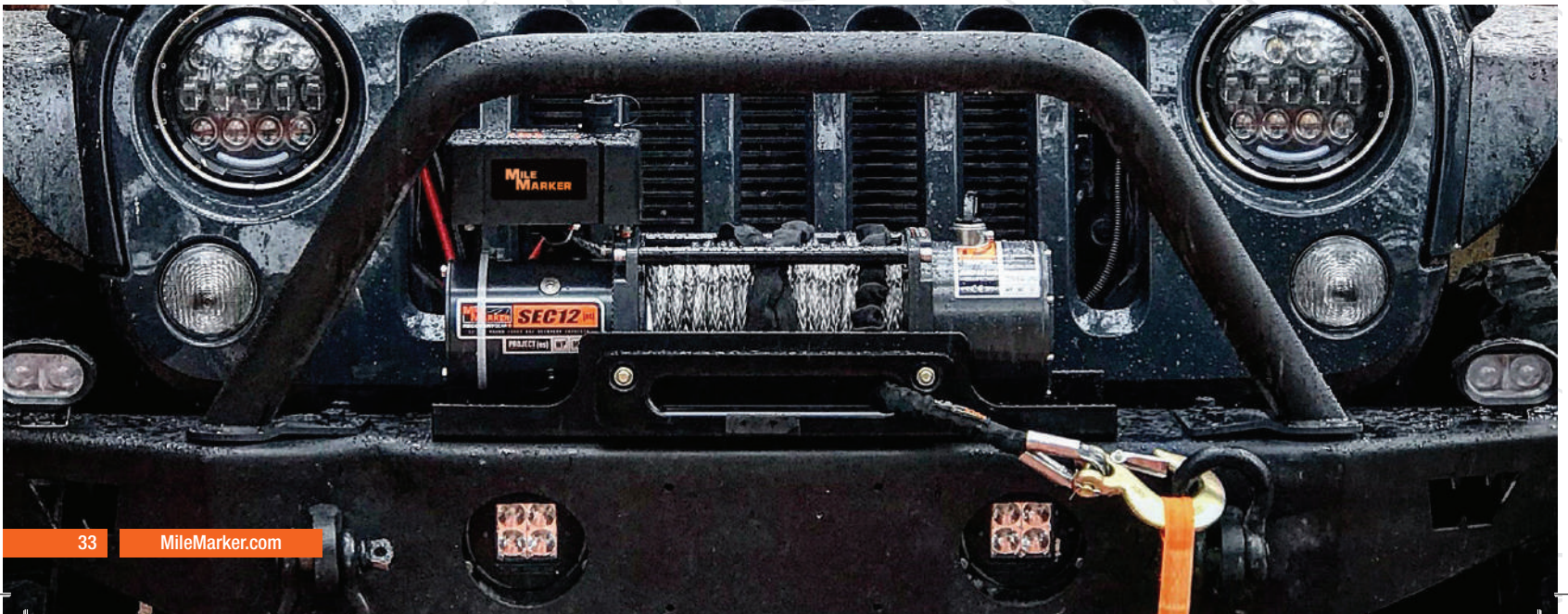
203 Transfer case without hubs **501**

With premium 1/2 Ton hubs  
(also fits '78-'79 3/4 Ton) **502**

With premium locking hubs  
Fits '73-'77 3/4 Ton **503**

With premium locking hubs  
1 Ton GM, Ford **505**

Bearing kit **701**



# PREMIUM LOCKING HUBS

Mile Marker hubs allow you to manually lock your vehicle into 4 wheel drive and are built to last through all weather and terrain. Use the two guides to choose the right hub for your vehicle and the correct conversion kit if needed (see next page for conversion kits)



104



302



426



428



449SS

## HUB SPECIFICATION GUIDE

All specifications must match exactly for hub to fit.

| Part Number | Bolt Circle | # of Bolts | # of Splines | Axle O.D. |
|-------------|-------------|------------|--------------|-----------|
| 104         |             | Internal   | 19           | 1.250     |
| 302         |             | Internal   | 19           | 1.250     |
| 423         | 3.750       | 6          | 19           | 1.250     |
| 426         | Internal    | Internal   | 27           | 1.210     |
| 427         | 4.500       | 5          | 23           | 1.016     |
| 428         | 4.500       | 5          | 27           | 1.206     |
| 430         | 3.260       | 6          | 27           | 1.094     |
| 435         | 3.260       | 6          | 28           | 1.143     |
| 436         | 3.543       | 6          | 26           | 1.080     |
| 449SS       |             | Internal   | 30           | 1.312     |

| Part Number | Bolt Circle | # of Bolts | # of Splines | Axle O.D. |
|-------------|-------------|------------|--------------|-----------|
| 457         | 3.437       | 6          | 27           | 1.187     |
| 459SS       |             | Internal   | 35           | 1.500     |
| 460         | 76          | 6          | 26           | 91        |
| 466         | 3.543       | 6          | 30           | 1.300     |
| 470         | 3.440       | 5          | 27           | 1.187     |
| 481         | 3.437       | 6          | 10           | 1.125     |
| 490         | 3.543       | 6          | 26           | 1.100     |
| 549         | 4.016       | 6          | 35           | 1.422     |
| 11034-01    | 3.960       | 8          | 30           | 1.312     |
| 95-37044    | 4.500       | 5          | 19           | 1.250     |



BUILT TO LAST



MADE FOR EXTREME TRACTION

# HUB APPLICATION GUIDE

| Vehicle Model/Year                              | Part Number | Vehicle Model/Year                        | Part Number | Vehicle Model/Year                          | Part Number |
|---|-------------|---|-------------|---|-------------|
| <b>AMC/JEEP</b>                                 |             | 1 Ton Dana 50 & 60 Axle '76 - '04 (A,B) * | 449SS       | <b>KIA</b>                                  |             |
| Cherokee '74 - '87                              | 104, 302    | F-150 '59 - '81(A,B) ***                  | 104, 302    | Grand Sportage '97 - '02                    | 460         |
| CJ Universal '42 - '71                          | 481         | F-150 '82 - '96 (A,B) *                   | 104, 302    | Sportage '97 - '02                          | 460         |
| CJ Universal '72 - '86                          | 457         | F-250 '99 - '04                           | 449SS       | <b>MAZDA</b>                                |             |
| CJ Universal '80 - '86                          | 470         | F-250 ex. F/T '59 - '98 ***               | 449SS       | B3000 '01 - '08                             | 426         |
| Gladiator '74 - '87                             | 104, 302    | F-250 '05 - '20                           | 549         | B4000 '01 - '08                             | 426         |
| J10 Pickup '74 - '80                            | 104, 302    | F-350 '88 - '98 ***                       | 449SS       | Navajo '90 - '94 (A) *                      | 428         |
| J20 Pickup '74 - '77                            | 423         | F-350 '99 - '04                           | 449SS       | Pickup '94 - '97 (A) *                      | 428         |
| J20 Pickup '78 - '90                            | 104, 302    | F-350 Dana 50 & 60 Axle '76 - '04 (A,B) * | 449SS       | <b>NISSAN</b>                               |             |
| Wagoneer '71 - '73                              | 457         | F-350 '05 - '20                           | 549         | 1/2 Ton P/U '85 1/2 - '89                   | 430         |
| Wagoneer '74 - '87                              | 104, 302    | F-450 '88 - '98 ***                       | 449SS       | Frontier '98 - '04                          | 435         |
| <b>CHEVROLET/GMC</b>                            |             | F-450 '99 - '04                           | 449SS       | Hardbody (6 Bolt 27 Spline) '86 1/2 - '89   | 430         |
| 1/2 Ton Pickup (K10) '69 - '87                  | 104, 302    | F-450 Dana 50 & 60 Axle '76 - '04 ***     | 449SS       | Hardbody '90 - '97                          | 435         |
| 3/4 Ton Pickup '78 - '87                        | 104, 302    | F-450 '05 - '20                           | 549         | Pathfinder (6 Bolt 27 Spline) '86 1/2 - '89 | 430         |
| Blazer '69 - '91                                | 104, 302    | F-550 '99 - '04                           | 449SS       | Pathfinder '90 - '01                        | 435         |
| Chevy 3/4 Ton (K-20) Pickup '60 - '77           | 423         | F-550 '05 - '20                           | 549         | Xterra '00 - '04                            | 435         |
| Chevy IT (K-30) Pickup '77 - '87                | 449SS       | Bronco '66 - '96 (A, B) *                 | 104, 302    | All Nissan (6 Bolt 28 Spline) - ALL         | 435         |
| Chevy IT Dana 50 & 60 Axle '77 - '87            | 449SS       | Bronco II '83 - '90 (A) ***               | 427         | <b>SUZUKI</b>                               |             |
| Jimmy '69 - '91                                 | 104, 302    | Excursion '99 - '04                       | 449SS       | Samurai '82 - '98                           | 436         |
| Suburban '69 - '91                              | 104, 302    | Explorer '90 - '94 (A) ***                | 428         | Sierra '82 - '98                            | 436         |
| <b>CHRYSLER/PLYMOUTH/DODGE</b>                  |             | Ranger '83 - '97 (A) ***                  | 428         | <b>TOYOTA</b>                               |             |
| 1/2T W-100 P/U '57 - '68                        | 423         | Ranger '98 - '00 (A) **                   | 426         | 4 Runner '76 - '98 ***                      | 490         |
| 1/2T W-100 P/U '69 - '93                        | 104, 302    | <b>GEO</b>                                |             | 4 Runner 4x4 Pickup '86 - '94               | 490         |
| 3/4 Ton W-200 Pickup except full-time 4WD - ALL | 423         | Tracker (all)                             | 436         | Hilux '76 - '98 ***                         | 490         |
| 1 Ton W-300 Series '76 - '89                    | 11034-01    | <b>INTERNATIONAL HARVESTER</b>            |             | Land Cruiser '63 - '98 ***                  | 490         |
| 1 Ton Dana 50 & 60 Axle '90 - '93               | 449SS       | 1/2 Ton Pickup '64 - '73                  | 104, 302    | Land Cruiser '76 - '85                      | 466         |
| RAM Charger '80 - '93                           | 104, 302    | 1/2 Ton Pickup '74 - '75                  | 457         | Pickup '76 - '85                            | 466         |
| Trail Duster '80 - '93                          | 104, 302    | 3/4 Ton Pickup '56 - '75                  | 423         | Pickup '76 - '98 ***                        | 490         |
| <b>FORD</b>                                     |             | 1 Ton HD. 200 with FA-20 Axle - ALL       | 11034-01    | T-100 '93 - '98                             | 490         |
| 3/4 Ton P/U w/Spline wheel hub (A,B) - ALL *    | 104, 302    | Scout '61 - '71                           | 481         | <b>HEAVY DUTY</b>                           |             |
| 3/4 Ton w/3500 Axle ex. F/T '63 - '77           | 423         | Scout II (ex. F/T) '72 - '80              | 457         | 35 spline Dana 70 hub                       | 459SS       |
| 1 Ton Pickup '59 - '96 ***                      | 449SS       | Travel-all 1/2 Ton '64 - '73              | 104, 302    |   |             |
|   |             | Travel-all 1/2 Ton '74 - '75              | 457         |   |             |
|   |             | Travel-all 3/4 Ton '56 - '75              | 423         |   |             |

## Nut Conversion Kits

|          |          |
|----------|----------|
| 104, 302 | 95-32720 |
| 427      | 95-27988 |
| 428      | 95-27997 |
| 449SS    | 95-32721 |
| 490      | 95-29918 |

- A. If OEM automatic hubs, a conversion kit is required to convert to manual hubs
- B. '73-'79 vehicles with full-time 4 wheel drive require a transfer case conversion kit
- \* Nut Conversion Kit required
- \*\* Not required on these model years 99-04
- \*\*\* Depending on application Nut Conversion Kit may be required

## MILE MARKER WARRANTY INFORMATION

### Mile Marker/Selectro hubs and Conversion Kits Limited Warranty

Mile Marker Industries warrants directly to the first purchaser that part numbers 427, 428, and all Selectro models will be free from defect in material and workmanship appearing under normal use and service for a period of one year.

Mile Marker Industries warrants directly to the first purchaser that part numbers 426 and 460 will be free from defect in material and workmanship appearing under normal use and service for a period of two years.

Mile Marker Industries warrants directly to the first purchaser that part numbers 104, 302, 423, 430, 435, 436, 449SS, 457, 459SS, 466, 470, 481, 490 and 549 will be free from defect in material and workmanship appearing under normal use and service for as long as said purchaser owns the Premium Locking Hubs.

Mile Marker Industries warrants directly to the first purchaser that all Mile Marker Conversion Kits will be free from defect in material and workmanship appearing under normal use and service for a period of one year.

Warranty registration must be submitted at [milemarker.com/warranty](http://milemarker.com/warranty) within thirty days of purchase by the end user. If you discover a hidden defect, Mile Marker will, as its option, repair or replace the product or necessary replacement parts at no charge to you, provided you remove the product from the vehicle and return it prepaid to Mile Marker Industries. If the product was purchased in the United States, the owner must contact our warranty department to get a Return Goods Authorization (RGA) number before returning the product. If the product was purchased outside the United States, the owner must return the product to the original place of purchase.

### Mile Marker Portable Winch Limited 1-Year Warranty

Mile Marker Industries warrants to the original purchaser that the mechanical components and electrical components of the Rhino Pull 1000 portable winch will be free of defects in material and workmanship for a period of one (1) year from the original date of purchase. Rechargeable batteries included with products are warranted to be free of defects in material and workmanship for a period of ninety (90) days from the original date of purchase. This Warranty applies only to the original purchaser of the Products.

### Mile Marker Industries Hydraulic Winch Limited Warranty

Mile Marker Industries warrants each winch when used in normal service against factory defects in materials and workmanship to the original commercial and recreational purchaser for the period of five years. New cable assemblies are warranted against defects in workmanship and materials when received by the retail purchaser. There is no applicable warranty for cable assemblies after initial use. Excluded from this warranty are the finish of the winch and any condition Mile Marker determines to have been caused by misuse or abnormal use. Warranty registration must be submitted at [milemarker.com/warranty](http://milemarker.com/warranty) within thirty days by the end user. Warranty submissions must reference winch serial number to be valid. Warranty will only be valid for the original purchaser of the winch and installed on the vehicle for which it was originally registered. The owner will be responsible for removing the winch and returning it to Mile Marker freight prepaid unless a determination is made that replacement parts can be sent out which will remedy the problem. Mile Marker will repair or replace any or all winch parts, which after inspection determines to be defective. If the product was purchased in the United States, the owner must contact our warranty department to get a Return Goods Authorization (RGA) number before returning the product. If the product was purchased outside the United States, the owner must return the product to the original place of purchase.

### Mile Marker Industries Electric Winch Limited Two Year Warranty

Mile Marker Industries offers a limited two year warranty to the original retail purchaser for each new Mile Marker electric winch, used as a recreational recovery winch only, against manufacturing defects in workmanship and materials on all mechanical components. Electrical components consisting of motors, solenoids, wiring, wire connectors and associated parts have a limited one year warranty. New cable assemblies are warranted against defects in workmanship and materials when received by the retail purchaser. There is no applicable warranty for cable assemblies after initial use. Excluded from this warranty are the finish of the winch and any condition Mile Marker determines to have been caused by misuse or abnormal use. Warranty registration must be submitted at [milemarker.com/warranty](http://milemarker.com/warranty) within thirty days by the end user. Warranty submissions must reference winch serial number to be valid. Warranty will only be valid for the original purchaser of the winch and installed on the vehicle for which it was originally registered. The owner will be responsible for removing the winch and returning it to Mile Marker freight prepaid unless a determination is made that replacement parts can be sent out which will remedy the problem. Mile Marker will repair or replace any or all winch parts, which after inspection determines to be defective. If the product was purchased in the United States, the owner must contact our warranty department to get a Return Goods Authorization (RGA) number before returning the product. If the product was purchased outside the United States, the owner must return the product to the original place of purchase.

For full warranty and general warranty procedure and policy visit [milemarker.com/warranty](http://milemarker.com/warranty)



2121 BLOUNT ROAD  
POMPANO BEACH, FL 33069 USA

MILEMARKER.COM  
INFO@MILEMARKER.COM  
800.886.8647



PN: 30-50020-21