

标记	更改内容	区域	更改文件编号	日期	登记	审核
△						

普通尺寸公差	公差等级	>0.5~6	>6~30	>30~120	>120~315	>315~1000	>1000~2000
	A级	±0.05	±0.1	±0.15	±0.2	±0.3	±0.5
	B级	±0.1	±0.2	±0.3	±0.5	±0.8	±1.2
	C级	±0.2	±0.5	±0.8	±1.2	±2.0	±3.0
	D级	±0.5	±1.0	±1.0	±1.5	±3.0	±4.0

143 mm
143 mm
全部 6.3/

SNDOAS

INSTALLATION AND USER'S MANUAL

SNDOAS
 GLOBAL ELECTRICAL HK TRADING LIMITED
 ROOMS 1318-19 HOLLYWOOD PLAZA
 610 NATHAN ROAD
 MONGKOK KL HONG KONG
 999077

Customer Service: E-mail: sndoas.service@outlook.com

210 mm

PI-0150-23-4,-5

说明书框住内容有变

- 技术要求：
- 1.字体要求印刷清晰，不能出现错印，漏印现象。
 - 2.尺寸按规格要求。
 - 3.印刷版面参照电子档。

项目	批准	校核	设计	重要零件	材质	80克双胶纸	订单编号	PI-0150-23			
签字				服务零件	规格	143*210	料号	B53-TF39-2048-03-XX			
日期				安规零件	表面处理		图号	D			
中山市甜美电器有限公司 ZhongShan Tianmei Electrical Appliances Co.,Ltd				比例			零件名称	2048说明书 1/1			
				第一角法	数量					重量	
					单位	mm				图幅	

CONTENT

Introduction	2
Safety Precaution	2
Parts Diagram	3-4
Installation Instructions	4-5
Installation	6-8
Operation	9
Maintenance	9-11
Trouble-Shooting	12
Environmental Protection	12

Introduction

Thank you for choosing this cooker hood.

- This instruction manual is designed to provide you with all required instructions related to the installation, use and maintenance of the appliance.
- In order to operate the unit correctly and safely, please read this instruction manual carefully before installation and usage.

Safety Precaution

- Never let the children operate the machine.
- The cooker hood is for home use only, not suitable for barbecue, roast shop and other commercial purpose.
- Clean the cooker hood according to the instruction manual and keep the unit from danger of burning. There is a fire risk if cleaning is not carried out in accordance with the instructions.
- Please keep the kitchen room a good convection before connecting this appliance; Please check that the power supply cord is undamaged. A damaged supply cord must be replaced by qualified service personnel only.
- Regulations concerning the discharge of air have to be fulfilled.
- This appliance can be used by children aged from 8 years and above also the persons with reduced physical, sensory or mental capabilities or lack of experience and knowledge if they have been given supervision or instruction concerning use of the appliance in a safe way and understand the hazards involved. Children shall not play with the appliance. Cleaning and user maintenance shall not be made by children without supervision.
- If the supply cord is damaged, it must be replaced by the manufacturer, its service agent or similarly qualified persons in order to avoid a hazard.



CAUTION:

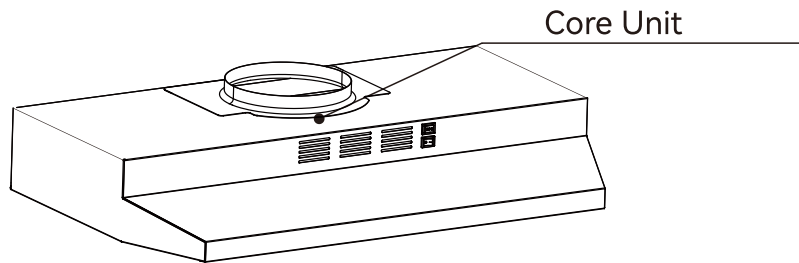
Accessible parts may become hot when used with cooking appliance.

Electrical Shock Hazard

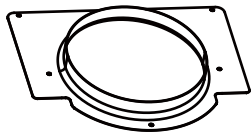
Only plug this unit into a properly earthed outlet.

If you have doubts, seek advice from a suitably qualified engineer.

Parts Diagram



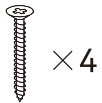
Parts Supplied



Air Outlet

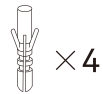


Indoor baffle (required for air exhaust outside, not required when exhausting inside)



× 4

St4 × 30



× 4

φ 8 × 35



× 4

St4 × 16



× 6

St4 × 6

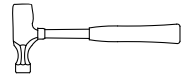
Tools Required



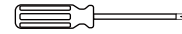
Pencil



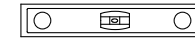
Measuring tape



Hammer



Screwdriver



Level



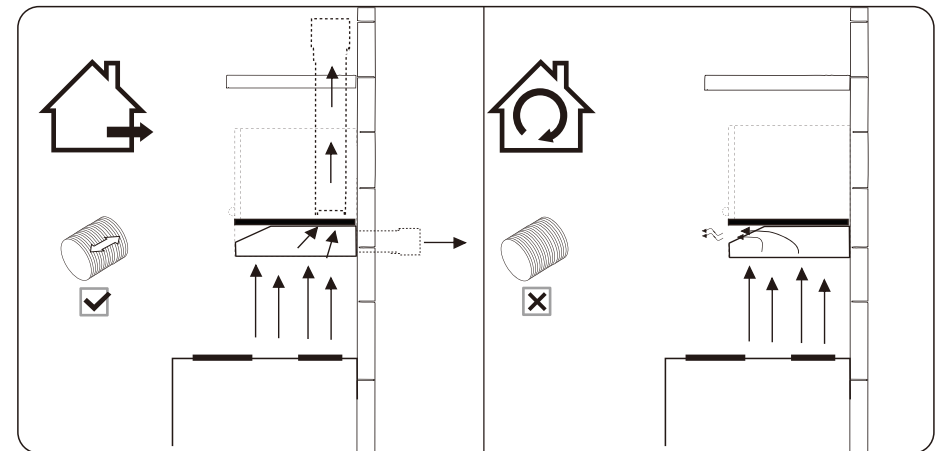
Electric drill



Duct Tape

Installation Instructions

Prepare for installation:

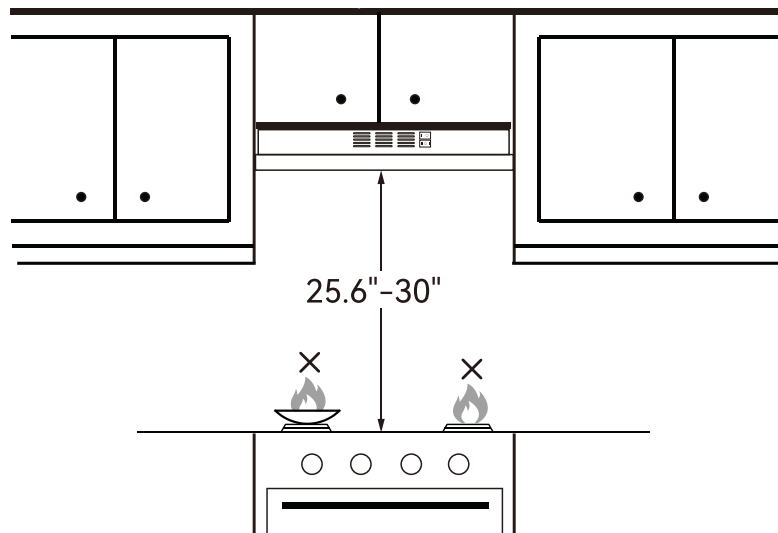


DUCTED OPTION

RECIRCULATION OPTION

If you have an outlet to the outside, your cooker hood can be connected as above picture by means of a pipe (with an interior diameter of 47.24"). If you don't have an outlet to the outside, you can go with recirculation mode by using charcoal filter, and remove the indoor baffle.

Installation Requirements



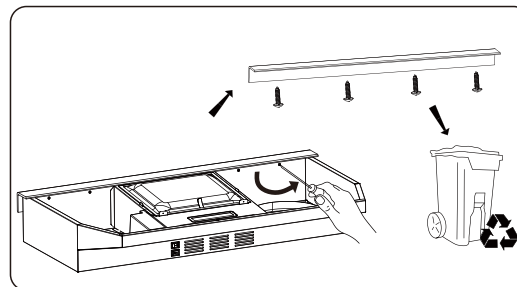
The cooker hood should be placed at a distance of 25.6"~30" above the cooktop for the best effect.

Note No open flames directly approach to the range hood.

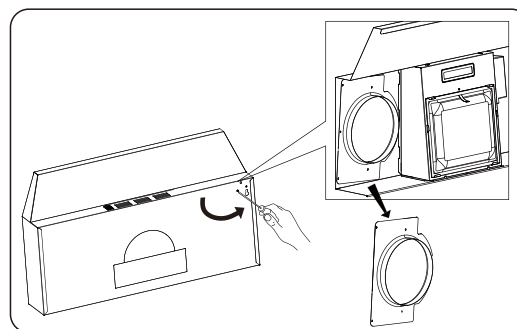
Installation

Note Please connect the power supply to test and confirm that the power is on before installing this under cabinet range hood.

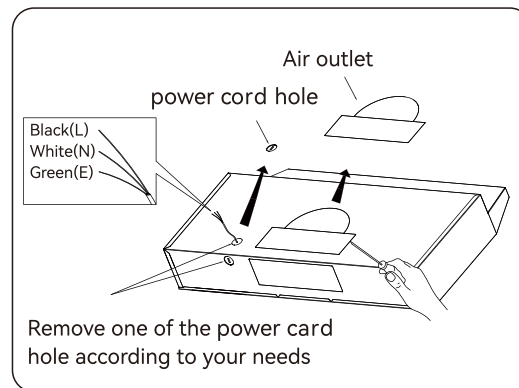
Refer to the installation instructions:



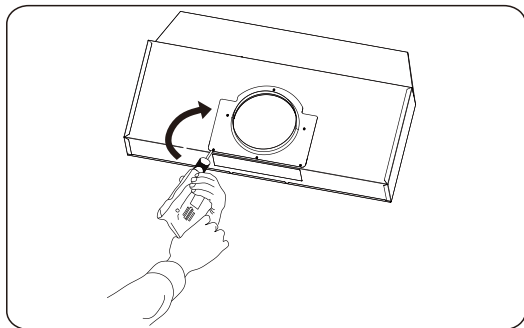
1. Remove the corner bead.



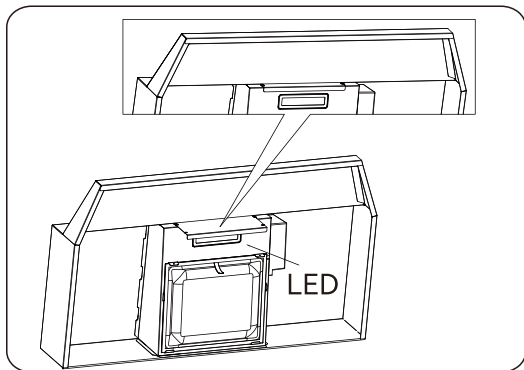
2. Remove the chimney connector. **(If you go with recirculation option, please ignore this step)**



3. Remove the material to open the power cord hole and the air outlet at the top of the range hood. **(If you go with recirculation option, please do not remove the outlet)**
Pass the power cord through the power cord hole.

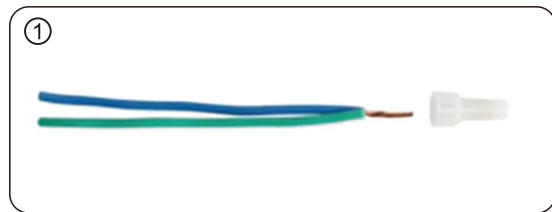


4. Install the chimney connector with six 4*6 screws clockwise.

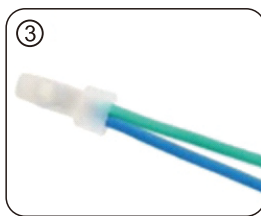
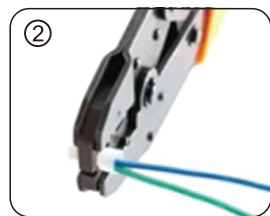


5. Install the front air outlet baffle. (Insert it between the volutes, with the folded edge facing the LED light)

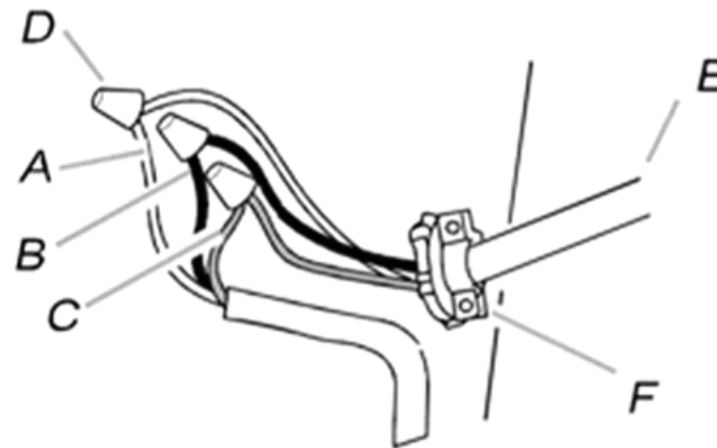
Wiring instruction



1. Strip wire insulation, twist wire ends and insert into the closed end crimp connector.



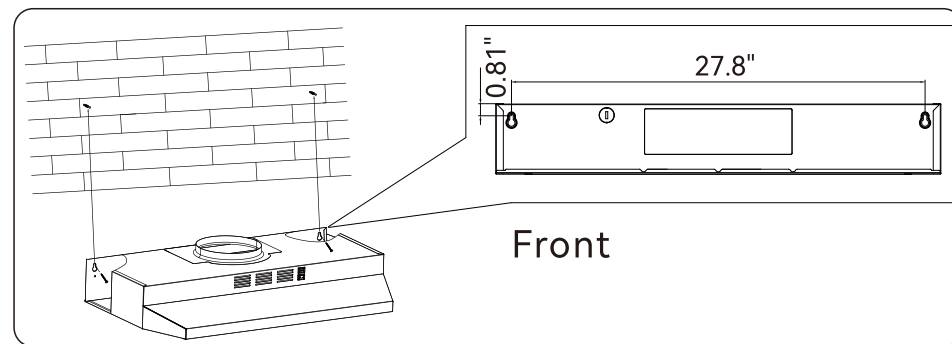
2. make the crimp. For best results, please use a professional crimping tool.
3. The connection is done.



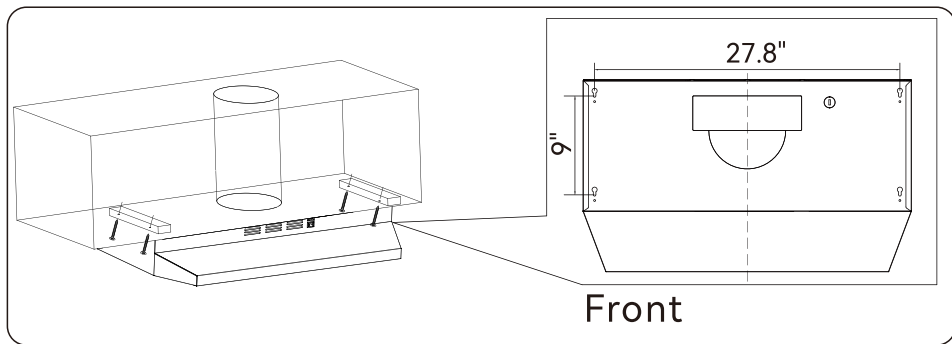
Connect the wires according to the colors respectively, be careful not to mix the connection.

- A. White wires
- B. Black wires
- C. Green ground wire
- D. UL listed wire connector
- E. Home power supply cable
- F. UL listed or CSA approved 0.5" strain relief

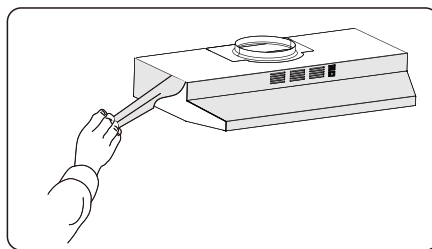
Two ways for installation(A&B)



6. A: Drill holes on the wall according to the distance shown in the picture, insert the plastic expansion pipes, insert two $\phi 4 \times 30$ screws into the plastic expansion pipes from the inside of the range hood.



6. B: Case 1, the wooden cabinet bottom plate thickness is more than 10mm, after determining the installation position of the range hood, use four screws ST4X30 to fix the range hood on the cabinet bottom plate from the inside of it through the hole on the top.
6. B: Other case, first drill 4 holes (diameter 6mm) on the bottom plate of the cabinet according to left dimensions in the above figuer, and prepare 2 wooden liers (1"x1" square, leght 8"~10") and place it on the holes (1 left and right/each). Then use the screw ST4X30 to fix the range hoodt on the wooden liners through the hole on the top from the inside of it.



⚠ CAUTION:
BEFORE USE
 Please remove the white/blue protective film on the range hood. (Only for stainless steel finish)

Operation

2 Rocker Switchs



Light button

On the right side of hood.



Speed button

On the right side of hood.
 "=": high speed level.
 "-": Low speed level.
 "O": Off

Maintenance

Before cleaning switch the unit off and pull out the plug.

I. Regular Cleaning

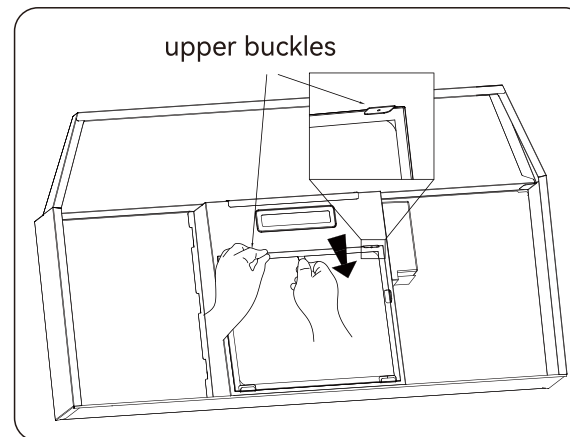
Use a soft cloth moistened with hand-warm mildly soapy water or household cleaning detergent. Never use metal pads, chemical, abrasive material or stiff brush to clean the unit.

II. LED Light Replacement

Switch the unit off and unplug the appliance.

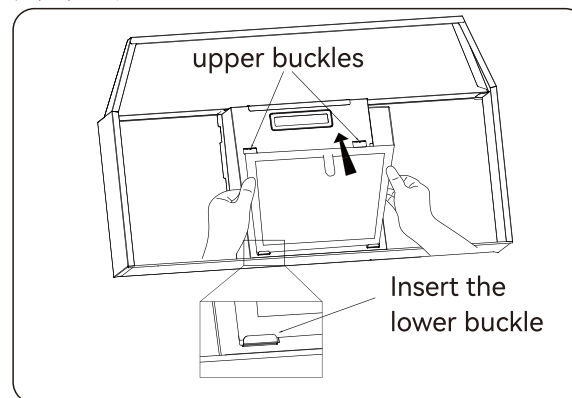
CAUTION: LAMP UNIT MAY BE HOT!
WAIT UNTIL THE UNIT IS COOL. BEFORE attempting to replace the LED lamps make sure the unit is powered off and **UNPLUGGED.**

Replace the filter

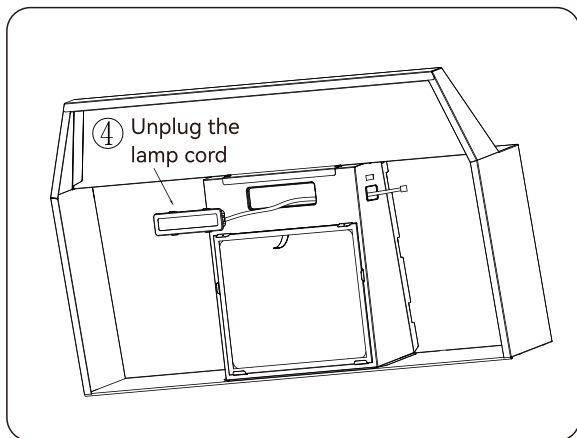
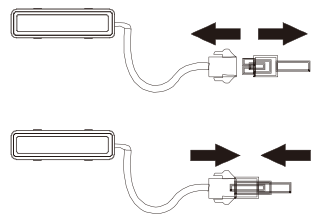
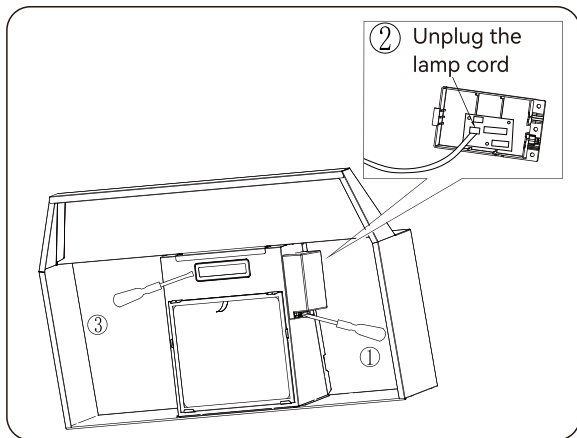


Remove the filter: pull the plastic strip on the baffle filter with the right hand, and pull the filter out from the two upper buckles with the other hand.

此处有变



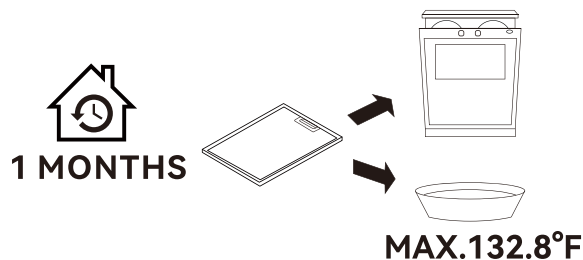
Install the filter: Insert the filter into lower buckle, and then hold the filter with both hands, bend the filter slightly towards the upper buckle to install it into the upper buckle, adjust the filter to center it, and the filter can be slightly flattened after installation.



Pull out the light cable

III. Filter and charcoal filters replacement

In order to install the carbon filter, the grease filter should be detached first. Press the lock and pull it downward.



Trouble-Shooting

Fault	Cause	Solution
Light on, but fan does not work	The fan blade is jammed.	Switch off the unit and repair by qualified service personnel only.
	The motor is damaged.	
Both light and fan do not work	Light is burnt out.	Replace the LED light with correct rating.
	Power cord is loose.	Plug into the power supply again.
Serious Vibration of the unit	The fan blade is damaged.	Switch off the unit and repair by qualified service personnel only.
	The fan motor is not fixed tightly.	
	The unit is not hung properly on the bracket.	Take down the unit and check whether the bracket is in proper location.
Suction performance not good	Too far distance between the unit and the cooktop.	Readjust the distance between 25.6"-30"

Environmental Protection

Waste electrical products should not be disposed of with household waste. Please recycle where facilities exist. Check with your Local Authority or retailer for recycling advice.



