

Product Specification Sheets



FIRECLIP™

For Single or Double cable applications

70% quicker to install than traditional methods

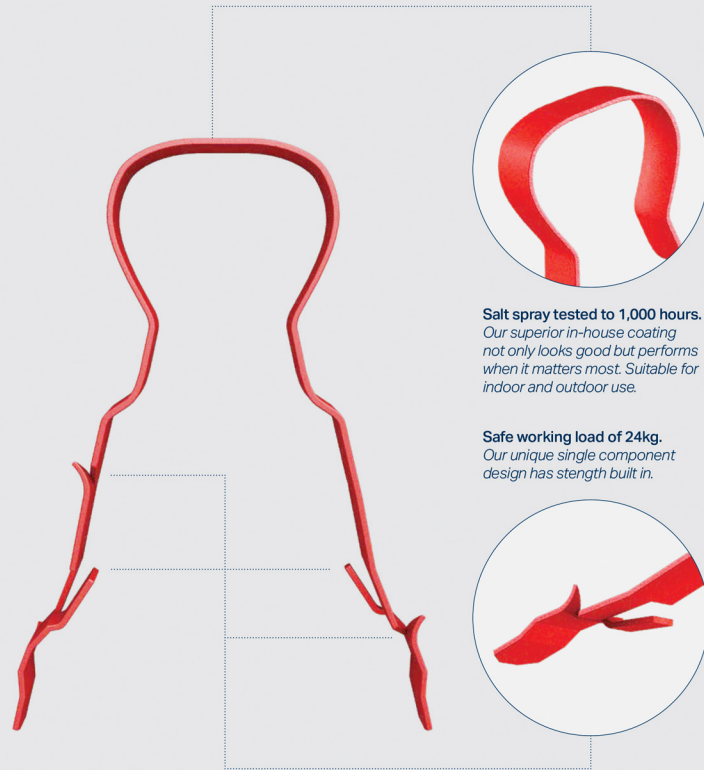
18th Edition and Fire-rated cable fixing, safe and compliant

90 & 120 minute fire resistant, meeting BSi and DIN classifications

Smoke emission tested to London Underground Standard

>1200 degrees Celsius melting point

Can be used with mini trunking alignment



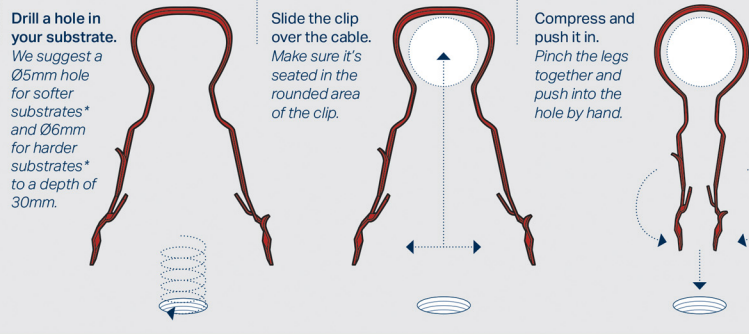
Salt spray tested to 1,000 hours.
Our superior in-house coating not only looks good but performs when it matters most. Suitable for indoor and outdoor use.

Safe working load of 24kg.
Our unique single component design has strength built in.



FAST AND EASY TO INSTALL

No need for plugs, screws or washers – just drill your hole, slide our clip over the cable, and push it into the wall.



Drill a hole in your substrate.
We suggest a Ø5mm hole for softer substrates* and Ø6mm for harder substrates* to a depth of 30mm.

Slide the clip over the cable.
Make sure it's seated in the rounded area of the clip.

Compress and push it in.
Pinch the legs together and push into the hole by hand.

*Softer substrates - Plaster, Plasterboard, etc.
*Harder substrates - Concrete, Masonry, Timber, etc.

THE INDUSTRY STANDARD

Fast becoming the industry standard – FireClip™ meets all current industry regulations, and surpasses a few too.

British Standards:
– BS7671: Amendment 3
– BS7671: 18th Edition 2018
– BSEN50200 PH120
– BS8519: 2010

European Standards:
– DIN 4102-12 E90

4mm — 14mm
Soft skin, flex and round cables. Single and Doubles.

Versatile
Can hold cable from Ø4mm up to Ø14mm. Available in a variety of colours including Red, Black or White.



Part Number	Product Description	Suitable For	Overall Cable Ø (OD)	Cable Cleat Size*	UOM
1LCB406	LINIAN FireClip, Black	Single Cable	4mm to 6mm	(CC3)	100
1LCR406	LINIAN FireClip, Red	Single Cable	4mm to 6mm	(CC3)	100
1LCW406	LINIAN FireClip, White	Single Cable	4mm to 6mm	(CC3)	100
1LCC406	LINIAN FireClip, Cream	Single Cable	4mm to 6mm	(CC3)	100
1LCPP406	LINIAN FireClip, Copper	Single Cable	4mm to 6mm	(CC3)	100
1LCO406	LINIAN FireClip, Orange	Single Cable	4mm to 6mm	(CC3)	100
1LCP406	LINIAN FireClip, Purple	Single Cable	4mm to 6mm	(CC3)	100
1LCBR406	LINIAN FireClip, Brown	Single Cable	4mm to 6mm	(CC3)	100
1LCB608	LINIAN FireClip, Black	Single Cable	6mm to 8mm	(CC4)	100
1LCR608	LINIAN FireClip, Red	Single Cable	6mm to 8mm	(CC4)	100
1LCW608	LINIAN FireClip, White	Single Cable	6mm to 8mm	(CC4)	100
1LCC608	LINIAN FireClip, Cream	Single Cable	6mm to 8mm	(CC4)	100
1LCPP608	LINIAN FireClip, Copper	Single Cable	6mm to 8mm	(CC4)	100
1LCO608	LINIAN FireClip, Orange	Single Cable	6mm to 8mm	(CC4)	100
1LCP608	LINIAN FireClip, Purple	Single Cable	6mm to 8mm	(CC4)	100
1LCY608	LINIAN FireClip, Yellow	Single Cable	6mm to 8mm	(CC4)	100
1LCBR608	LINIAN FireClip, Brown	Single Cable	6mm to 8mm	(CC4)	100
1LCGR608	LINIAN FireClip, Green	Single Cable	6mm to 8mm	(CC4)	100
1LCB682	LINIAN FireClip, Black	Double Cable	6mm to 8mm	(CC4x2)	100
1LCR682	LINIAN FireClip, Red	Double Cable	6mm to 8mm	(CC4x2)	100
1LCW682	LINIAN FireClip, White	Double Cable	6mm to 8mm	(CC4x2)	100
1LCC682	LINIAN FireClip, Cream	Double Cable	6mm to 8mm	(CC4x2)	100
1LCPP682	LINIAN FireClip, Copper	Double Cable	6mm to 8mm	(CC4x2)	100
1LCO682	LINIAN FireClip, Orange	Double Cable	6mm to 8mm	(CC4x2)	100
1LCP682	LINIAN FireClip, Purple	Double Cable	6mm to 8mm	(CC4x2)	100
1LCY682	LINIAN FireClip, Yellow	Double Cable	6mm to 8mm	(CC4x2)	100
1LCB911	LINIAN FireClip, Black	Single Cable	9mm to 11mm	(CC5)	100
1LCR911	LINIAN FireClip, Red	Single Cable	9mm to 11mm	(CC5)	100
1LCW911	LINIAN FireClip, White	Single Cable	9mm to 11mm	(CC5)	100
1LCC911	LINIAN FireClip, Cream	Single Cable	9mm to 11mm	(CC5)	100
1LCPP911	LINIAN FireClip, Copper	Single Cable	9mm to 11mm	(CC5)	100
1LCO911	LINIAN FireClip, Orange	Single Cable	9mm to 11mm	(CC5)	100
1LCP911	LINIAN FireClip, Purple	Single Cable	9mm to 11mm	(CC5)	100
1LCBLU911	LINIAN FireClip, Blue	Single Cable	9mm to 11mm	(CC5)	100
1LCY911	LINIAN FireClip, Yellow	Single Cable	9mm to 11mm	(CC5)	100
1LCBR911	LINIAN FireClip, Brown	Single Cable	9mm to 11mm	(CC5)	100
1LCGR911	LINIAN FireClip, Green	Single Cable	9mm to 11mm	(CC5)	100
1LCB9112	LINIAN FireClip, Black	Double Cable	9mm to 11mm	(CC5x2)	100
1LCR9112	LINIAN FireClip, Red	Double Cable	9mm to 11mm	(CC5x2)	100
1LCW9112	LINIAN FireClip, White	Double Cable	9mm to 11mm	(CC5x2)	100
1LCC9112	LINIAN FireClip, Cream	Double Cable	9mm to 11mm	(CC5x2)	100
1LCPP9112	LINIAN FireClip, Copper	Double Cable	9mm to 11mm	(CC5x2)	100
1LCO9112	LINIAN FireClip, Orange	Double Cable	9mm to 11mm	(CC5x2)	100
1LCP9112	LINIAN FireClip, Purple	Double Cable	9mm to 11mm	(CC5x2)	100
1LCBLU9112	LINIAN FireClip, Blue	Double Cable	9mm to 11mm	(CC5x2)	100
1LCY9112	LINIAN FireClip, Yellow	Double Cable	9mm to 11mm	(CC5x2)	100
1LCGALV9112	LINIAN FireClip, Galvanised	Double Cable	9mm to 11mm	(CC5x2)	100
1LCW1114	LINIAN FireClip, White	Single Cable	11mm to 14mm	(CC6)	100
1LCR1114	LINIAN FireClip, Red	Single Cable	11mm to 14mm	(CC6)	100
1LCB1114	LINIAN FireClip, Black	Single Cable	11mm to 14mm	(CC6)	100
1LCBR114	LINIAN FireClip, Brown	Single Cable	11mm to 14mm	(CC6)	100

* Cleat size may vary, check with the cable manufacturer.

SUPERCLIP™

Suitable for SWA Cable, conduit and bunched cables for neat cable installation

Anchor fixings for wire and bunched cable

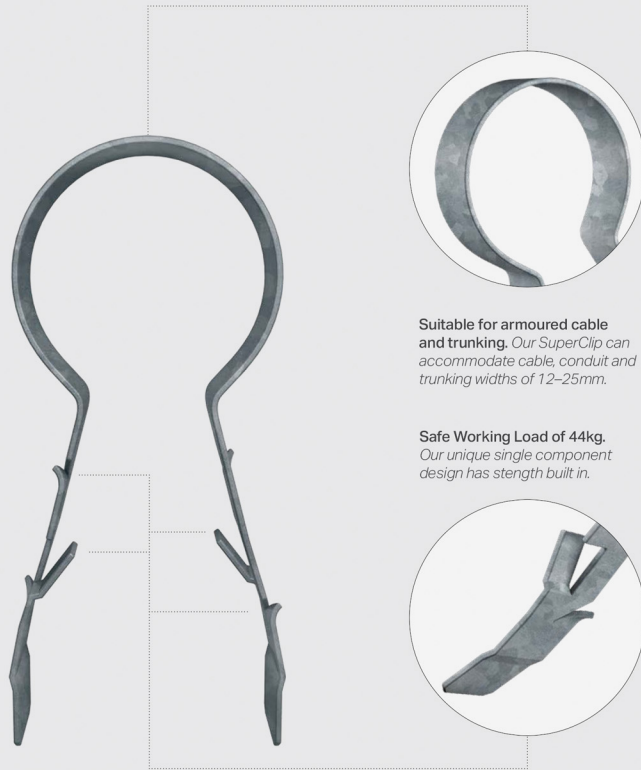
70% quicker to install than traditional methods

90 & 120 minute fire resistant, meeting BSi and DIN classifications

Corrosion resistant and UV stable, suitable for indoor and outdoor use

18th Edition and Fire-rated cable fixings, safe and compliant

No need for conduit saddles



Suitable for armoured cable and trunking. Our SuperClip can accommodate cable, conduit and trunking widths of 12-25mm.

Safe Working Load of 44kg. Our unique single component design has strength built in.



FAST AND EASY TO INSTALL

No need for plugs, screws, washers conduit saddles or plastic/aluminum cleats – just drill your hole, slide our clip over the cable, and push it into the wall.

Drill a hole in your substrate. We suggest a Ø10mm hole at a depth of 40mm.



Slide the clip over the cable. Make sure it's seated in the rounded area of the clip.



Compress and push it in. Pinch the legs together and push into the hole by hand.

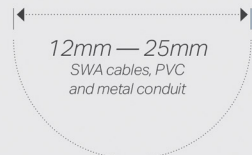


THE INDUSTRY STANDARD

Fast becoming the industry standard – SuperClip™ meets all current industry regulations, and surpasses a few too.

British Standards:
– BS7671: Amendment 3
– BS7671: 18th Edition 2018
– BSEN50200 PH120
– BS8519: 2010

European Standards:
– DIN 4102-12 E90



Versatile
Can hold cable conduit and armoured (SWA) from Ø12mm up to Ø25mm. Available in a variety of colours including Red, Black, White or Galvanised.



Part Number	Product Description	Overall Cable Ø (OD)	Cable Cleat Size*	UOM
1LSB1214	LINIAN SuperClip, Black	12mm to 14mm	(CC6)	25
1LSR1214	LINIAN SuperClip, Red	12mm to 14mm	(CC6)	25
1LSW1214	LINIAN SuperClip, White	12mm to 14mm	(CC6)	25
1LSC1214	LINIAN SuperClip, Cream	12mm to 14mm	(CC6)	25
1LSCP1214	LINIAN SuperClip, Copper	12mm to 14mm	(CC6)	25
1LSO1214	LINIAN SuperClip, Orange	12mm to 14mm	(CC6)	25
1LSP1214	LINIAN SuperClip, Purple	12mm to 14mm	(CC6)	25
1LSY1214	LINIAN SuperClip, Yellow	12mm to 14mm	(CC6)	25
1LSBR1214	LINIAN SuperClip, Brown	12mm to 14mm	(CC6)	25
1LSB1518	LINIAN SuperClip, Black	15mm to 18mm	(CC7)	25
1LSR1518	LINIAN SuperClip, Red	15mm to 18mm	(CC7)	25
1LSW1518	LINIAN SuperClip, White	15mm to 18mm	(CC7)	25
1LSC1518	LINIAN SuperClip, Cream	15mm to 18mm	(CC7)	25
1LSCP1518	LINIAN SuperClip, Copper	15mm to 18mm	(CC7)	25
1LSO1518	LINIAN SuperClip, Orange	15mm to 18mm	(CC7)	25
1LSP1518	LINIAN SuperClip, Purple	15mm to 18mm	(CC7)	25
1LSY1518	LINIAN SuperClip, Yellow	15mm to 18mm	(CC7)	25
1LSB1820	LINIAN SuperClip, Black	18mm to 20mm	(CC8)	25
1LSR1820	LINIAN SuperClip, Red	18mm to 20mm	(CC8)	25
1LSW1820	LINIAN SuperClip, White	18mm to 20mm	(CC8)	25
1LSGALV1820	LINIAN SuperClip, Galv	18mm to 20mm	(CC8)	25
1LSC1820	LINIAN SuperClip, Cream	18mm to 20mm	(CC8)	25
1LSCP1820	LINIAN SuperClip, Copper	18mm to 20mm	(CC8)	25
1LSO1820	LINIAN SuperClip, Orange	18mm to 20mm	(CC8)	25
1LSP1820	LINIAN SuperClip, Purple	18mm to 20mm	(CC8)	25
1LSY1820	LINIAN SuperClip, Yellow	18mm to 20mm	(CC8)	25
1LSB2022	LINIAN SuperClip, Black	20mm to 22mm	(CC9)	25
1LSR2022	LINIAN SuperClip, Red	20mm to 22mm	(CC9)	25
1LSW2022	LINIAN SuperClip, White	20mm to 22mm	(CC9)	25
1LSGALV2022	LINIAN SuperClip, Galv	20mm to 22mm	(CC9)	25
1LSC2022	LINIAN SuperClip, Cream	20mm to 22mm	(CC9)	25
1LSCP2022	LINIAN SuperClip, Copper	20mm to 22mm	(CC9)	25
1LSO2022	LINIAN SuperClip, Orange	20mm to 22mm	(CC9)	25
1LSP2022	LINIAN SuperClip, Purple	20mm to 22mm	(CC9)	25
1LSY2022	LINIAN SuperClip, Yellow	20mm to 22mm	(CC9)	25
1LSB2325	LINIAN SuperClip, Black	23mm to 25mm	(CC10)	25
1LSR2325	LINIAN SuperClip, Red	23mm to 25mm	(CC10)	25
1LSW2325	LINIAN SuperClip, White	23mm to 25mm	(CC10)	25
1LSGALV2325	LINIAN SuperClip, Galv	23mm to 25mm	(CC10)	25
1LSC2325	LINIAN SuperClip, Cream	23mm to 25mm	(CC10)	25
1LSCP2325	LINIAN SuperClip, Copper	23mm to 25mm	(CC10)	25
1LSO2325	LINIAN SuperClip, Orange	23mm to 25mm	(CC10)	25
1LSP2325	LINIAN SuperClip, Purple	23mm to 25mm	(CC10)	25
1LSY2325	LINIAN SuperClip, Yellow	23mm to 25mm	(CC10)	25

* Cleat size may vary, check with the cable manufacturer.

The Most Versatile
Way to Install and
Secure T&E Cables



- Twin, CPC cabling and PVC trunking
- Anchor fixings for wire etc.
- Corrosion resistant & UV Stable



Part Number	Product Range	Suitable For	Overall Cable Ø (OD)	UOM
1LTEG001	LINIAN T&E Clip, Grey	Flat Cable	7mm x 4mm	100
1LTEW001	LINIAN T&E Clip, White	Flat Cable	7mm x 4mm	100
1LTEG001.5	LINIAN T&E Clip, Grey	Flat Cable	9mm x 5mm	100
1LTEW001.5	LINIAN T&E Clip, White	Flat Cable	9mm x 5mm	100
1LTEG002.5	LINIAN T&E Clip, Grey	Flat Cable	10mm x 5mm	100
1LTEW002.5	LINIAN T&E Clip, White	Flat Cable	10mm x 5mm	100
1LTEG004	LINIAN T&E Clip, Grey	Flat Cable	13mm x 6mm	100
1LTEW004	LINIAN T&E Clip, White	Flat Cable	13mm x 6mm	100
1LTEG006	LINIAN T&E Clip, Grey	Flat Cable	14mm x 7mm	100
1LTEW006	LINIAN T&E Clip, White	Flat Cable	14mm x 7mm	100
1LTEG010	LINIAN T&E Clip, Grey	Flat Cable	18mm x 9mm	100
1LTEW010	LINIAN T&E Clip, White	Flat Cable	18mm x 9mm	100

T&E CLIP™

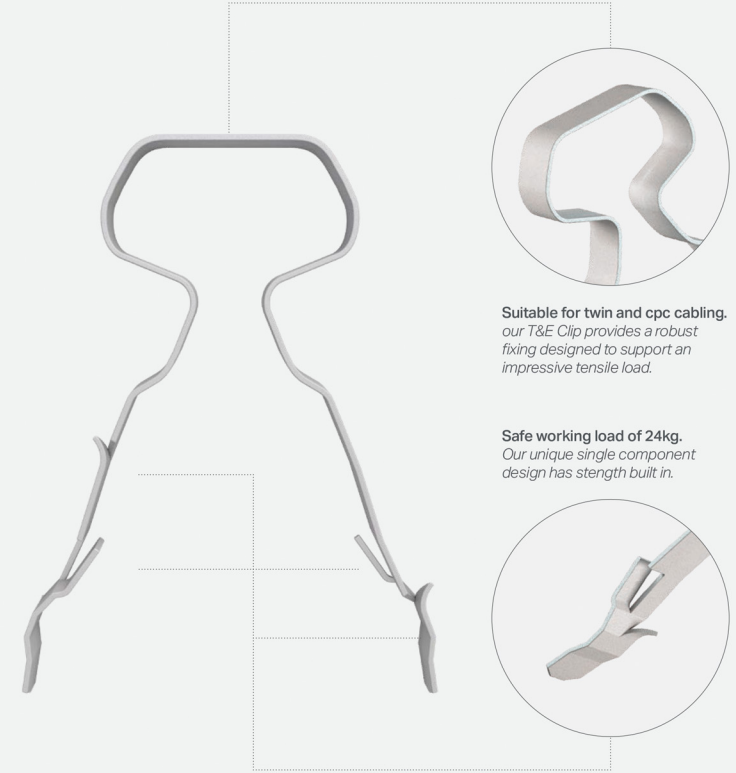
Suitable for twin, CPC cabling and PVC trunking

Anchor fixings for wire and bunched cable

18th Edition and Fire-rated cable fixings, safe and compliant

90 & 120 minute fire resistant, meeting BSi and DIN classifications

Corrosion resistant and UV stable, suitable for indoor and outdoor use



Suitable for twin and cpc cabling. our T&E Clip provides a robust fixing designed to support an impressive tensile load.

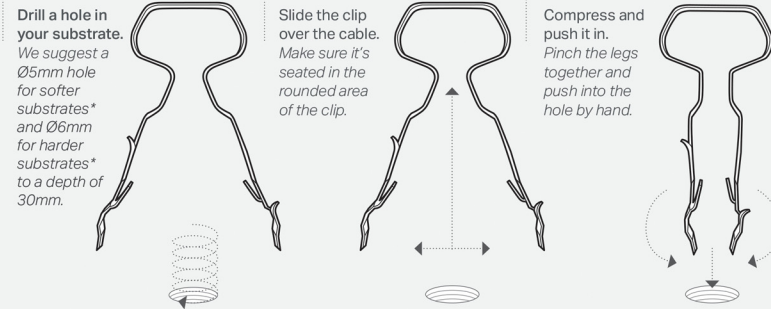
Safe working load of 24kg. Our unique single component design has strength built in.



FAST AND EASY TO INSTALL

No need for plugs, screws, washers or nail in clips – just drill your hole, slide our clip over the cable, and push it into the wall.

*Softer substrates - Plaster, Plasterboard, etc.
*Harder substrates - Concrete, Masonry, Timber, etc.



THE INDUSTRY STANDARD

Fast becoming the industry standard – T&E Clip™ meets all current industry regulations, and surpasses a few too.

British Standards:
– BS7671: Amendment 3
– BS7671: 18th Edition 2018
– BSEN50200 PH120
– BS8519: 2010

European Standards:
– DIN 4102-12 E90

1mm – 10mm
Flat Twin & Earth Cable
(624Y Twin & Earth PVC Cable BS6004)

Versatile
Can hold cable from Ø1mm upto Ø10mm. Available in grey or white.



The Fastest Way to
Install Coaxial Cables

COAXIAL CLIP™



- For CCTV, AV and Satellite TV installations
- For indoor and outdoor use
- Corrosion resistant – UV stable

Part Number	Product Description	Suitable For	Overall Cable Ø (OD)	UOM
1LCABT004	LINIAN Coaxial Clip, Black	Shotgun	4mm	100
1LCAWT004	LINIAN Coaxial Clip, White	Shotgun	4mm	100

COAXIAL CLIP™

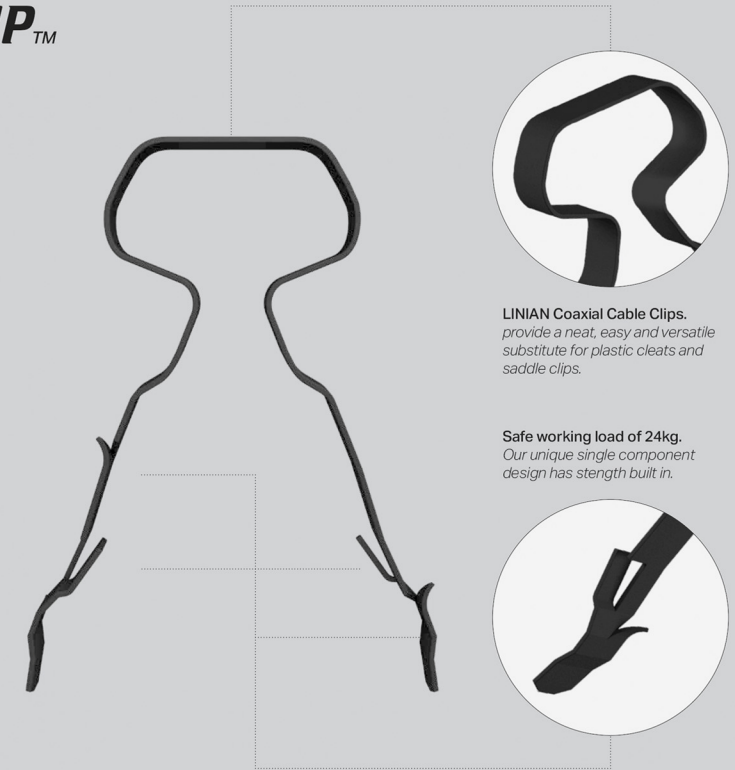
To suit RG59 Coaxial
'Shotgun' cabling

Quick instalation for
CCTV, AV and satellite
TV installations

18th Edition and
Fire-rated cable fixing,
safe and compliant

90 & 120 minute fire
resistant, meeting BSi
and DIN classifications

Corrosion resistant
and UV stable, suitable for
indoor and outdoor use



LINIAN Coaxial Cable Clips.
provide a neat, easy and versatile
substitute for plastic cleats and
saddle clips.

Safe working load of 24kg.
Our unique single component
design has strength built in.

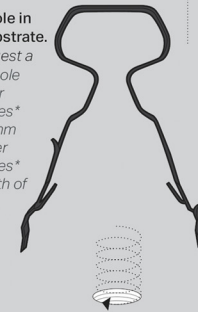


FAST AND EASY TO INSTALL

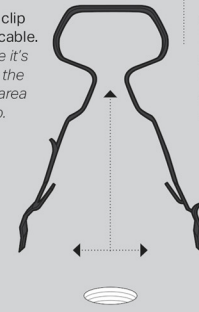
No need for plugs,
screws or washers
– just drill your hole,
slide our clip over
the cable, and push
it into the wall.

*Softer substrates - Plaster,
Plasterboard, etc.
*Harder substrates - Concrete,
Masonry, Timber, etc.

Drill a hole in
your substrate.
We suggest a
Ø5mm hole
for softer
substrates*
and Ø6mm
for harder
substrates*
to a depth of
30mm.



Slide the clip
over the cable.
Make sure it's
seated in the
rounded area
of the clip.



Compress and
push it in.
Pinch the legs
together and
push into the
hole by hand.

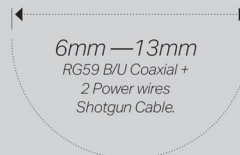


THE INDUSTRY STANDARD

Fast becoming the
industry standard
– Coaxial Clip™ meets
all current industry
regulations, and
surpasses a few too.

British Standards:
– BS7671: Amendment 3
– BS7671: 18th Edition 2018
– BSEN50200 PH120
– BS8519: 2010

European Standards:
– DIN 4102-12 E90



Versatile
Can hold cable from Ø6mm upto
Ø13mm. Available in black and white.



*Incredibly strong,
invisibly small*

NANOCLIP™



For fibre cables and other small diameter cables.



Part Number	Product Description	Overall Cable Ø (OD)	UOM
1LCW0.9	LINIAN NanoClip, White	0.9mm	100
1LCW002	LINIAN NanoClip, White	2mm	100
1LCW003	LINIAN NanoClip, White	3mm	100
1LCW3.8	LINIAN NanoClip, White	3.8mm	100
1LCB0.9	LINIAN NanoClip, Black	0.9mm	100
1LCB002	LINIAN NanoClip, Black	2mm	100
1LCB003	LINIAN NanoClip, Black	3mm	100
1LCB3.8	LINIAN NanoClip, Black	3.8mm	100
1LCBR0.9	LINIAN NanoClip, Brown	0.9mm	100
1LCBR002	LINIAN NanoClip, Brown	2mm	100
1LCBR003	LINIAN NanoClip, Brown	3mm	100
1LCBR3.8	LINIAN NanoClip, Brown	3.8mm	100

NANOCLIP™

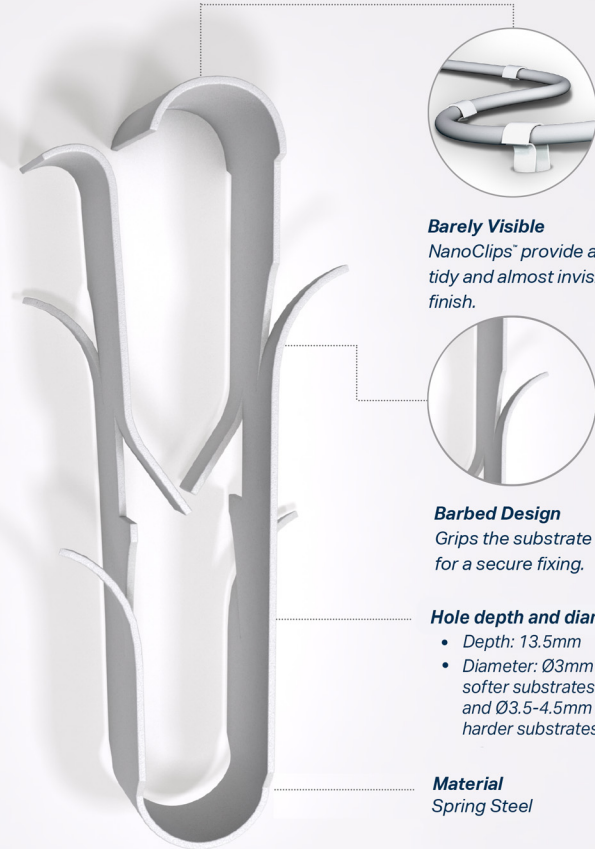
*To fit: 0.9 mm, 2mm, 3mm
& 3.8mm cables*

*18th Edition Compliant
and Fire-rated fixings,
safe and compliant*

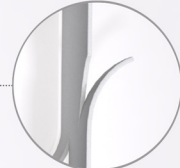
*90 & 120 minute fire
resistant, meeting
BSi and DIN classifications*

*Salt-spray tested > 1000hrs
Corrosion resistant
and UV stable, suitable for
indoor and outdoor use*

*Melt point > 1200 °C
Tested to London
Underground Standard
for smoke emissions*



Barely Visible
NanoClips™ provide a neat,
tidy and almost invisible
finish.



Barbed Design
Grips the substrate
for a secure fixing.

Hole depth and diameter

- Depth: 13.5mm
- Diameter: Ø3mm for softer substrates and Ø3.5-4.5mm for harder substrates*.

Material
Spring Steel



Available colours
White, Black, Brown

SPECIFICATIONS

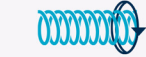
EASY INSTALL

Produced in UK manufacturing facilities with an approved, certified Quality Management System compliant with ISO 901:2015.

NanoClip™ meets all current regulations, and surpasses a few too.

DRILL HOLE

1. Drill a hole in your substrate
We suggest a Ø3mm hole for softer substrates* and Ø3.5mm - 4.5mm for harder substrates at a depth of 13.5mm.



INSERT CABLE

2. Insert the cable into the open side of the clip
Make sure it stays seated in the side with the OPENING.



PUSH IT IN

3. Push it into the wall
Insert with the CLOSED area of the clip facing into the wall.



*Softer substrates – Plaster, Plasterboard, etc. Harder substrates – Concrete, Masonry, Timber, etc.
For best results, a site test is recommended prior to full installation.

EARTH ROD PRO™

For Rapid Earth Rod Installation

EARTH ROD PRO RANGE™

Threads onto any standard earth rod

Bores through hard top layers and underground rock

EARTH ROD MAX DRIVER™
Attaches to your SDS drill

EARTH ROD PRO DRIVER
Attaches to your SDS drill

EARTH ROD DRILL BIT
Attaches directly to the earth rod



SPECIFICATIONS

Quality Standard:
All parts are produced in UK manufacturing facilities with an approved, certified Quality Management System compliant with ISO 901:2015.

Threads:
All parts made concurrently on state of the art sliding head lathes to ensure perfect compatibility of 5/8" BSW threads with copper earth rods.

Heat treatment:
Through-hardened to 45-55 HRC Rockwell, Strikes the perfect balance of toughness in hammer drilling applications.

Brazing:
Copper-brazing carbide tips at 1100 degrees Celsius to ensure an ultra-strong bond between tip and steel for extreme durability in the toughest drilling applications.

Carbide Tip Specification: *European sourced 'Hammer-grade' Tungsten carbide tip designed to withstand hammer blows into the hardest of masonry substrates.*

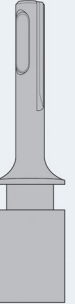
Earth Rod Drill Bit
Standard Tip also available (without Carbide) for fast, economical installation into softer substrates.

Drive Shanks:
Both our drive shanks are made to Bosch license specifications.

Steel Specification:
High alloy content, chromium, nickel, molybdenum European steel.

FAST AND EASY TO INSTALL

Remove your chosen Driver and Drill Bit from the packaging.

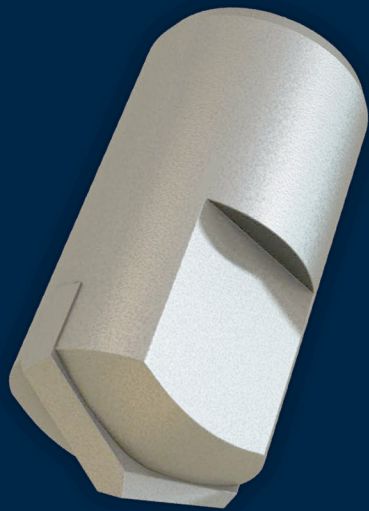


Turn the Driver and Drill Bit onto each end of the earth rod and Insert the Driver into the SDS or SDS Max chuck.

You can apply some grease to the shafts for easier removal.



Using the SDS drill, drive the rod into the substrate to the required depth.



linianclip.co.uk

LINIAN 
FASTER. SAFER. SIMPLER.



Go online for more information
LINIANCLIP.CO.UK

Speak to our sales team today on
+44 (0) 414 465 4858