



“This is Me” Personality Cube

Personalise each face on the cube to show everyone who you are.

Share your masterpiece with us by tagging us:



HapeToysNZ



hapetoysnz

3-6
years



Learning Benefits



Creative development



Fine motor skills



Problem solving

You will need:



Scissors



Glue

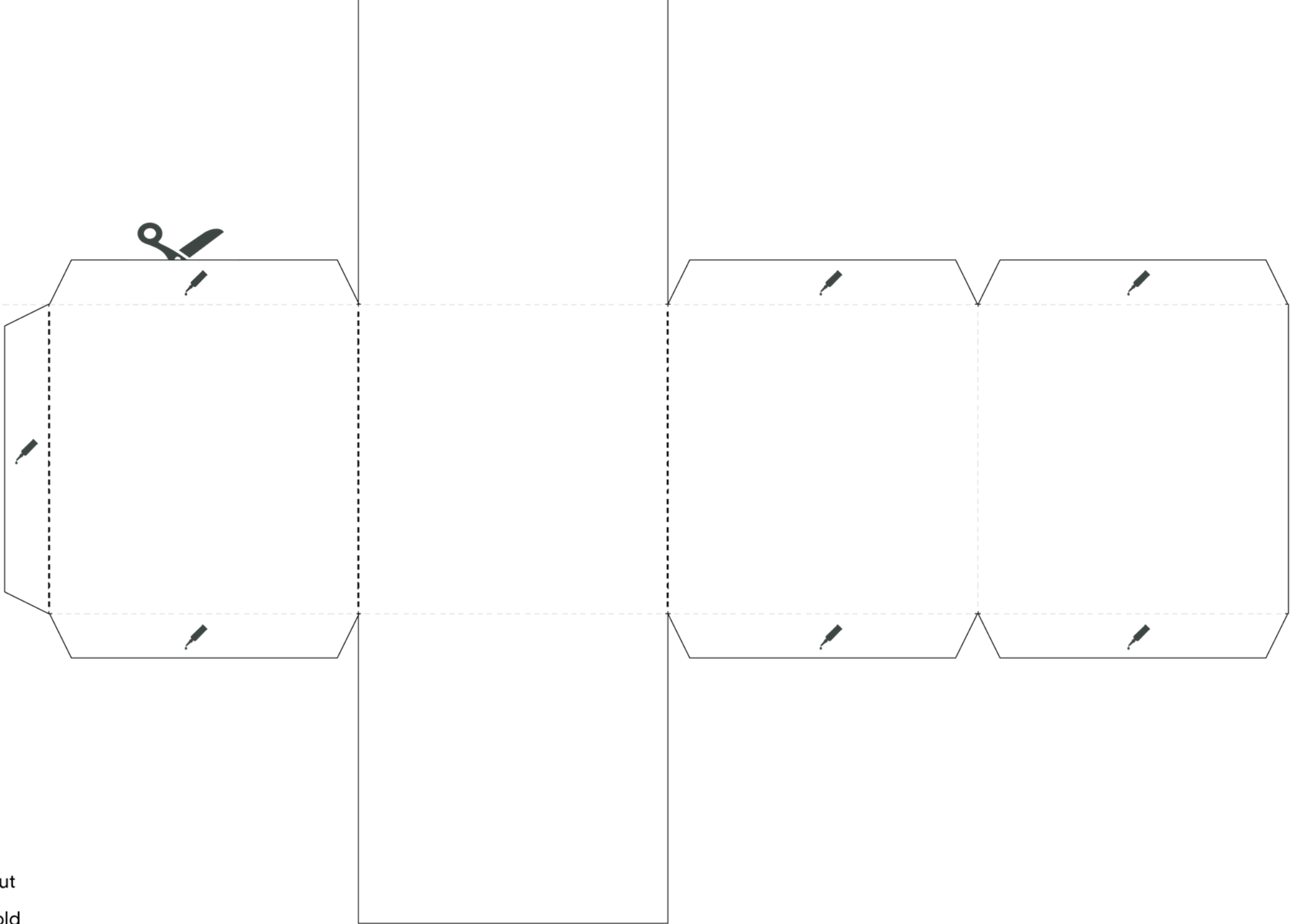


Colouring Pencils



1h 30min

Fold



- 1 Cut
- 2 Fold

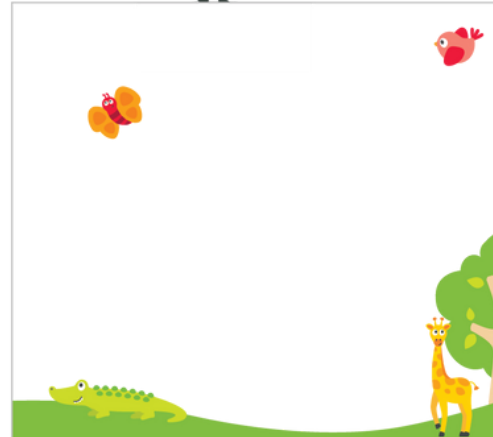
This summer I met



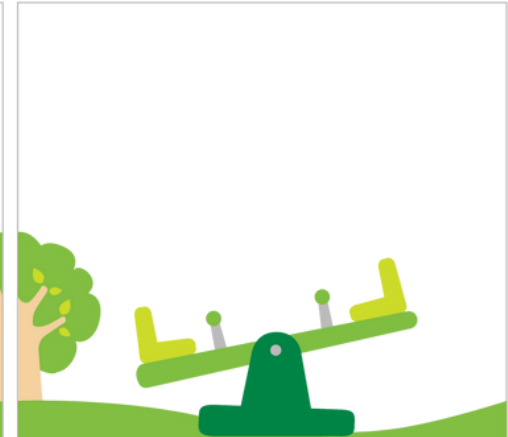
I love



This is me



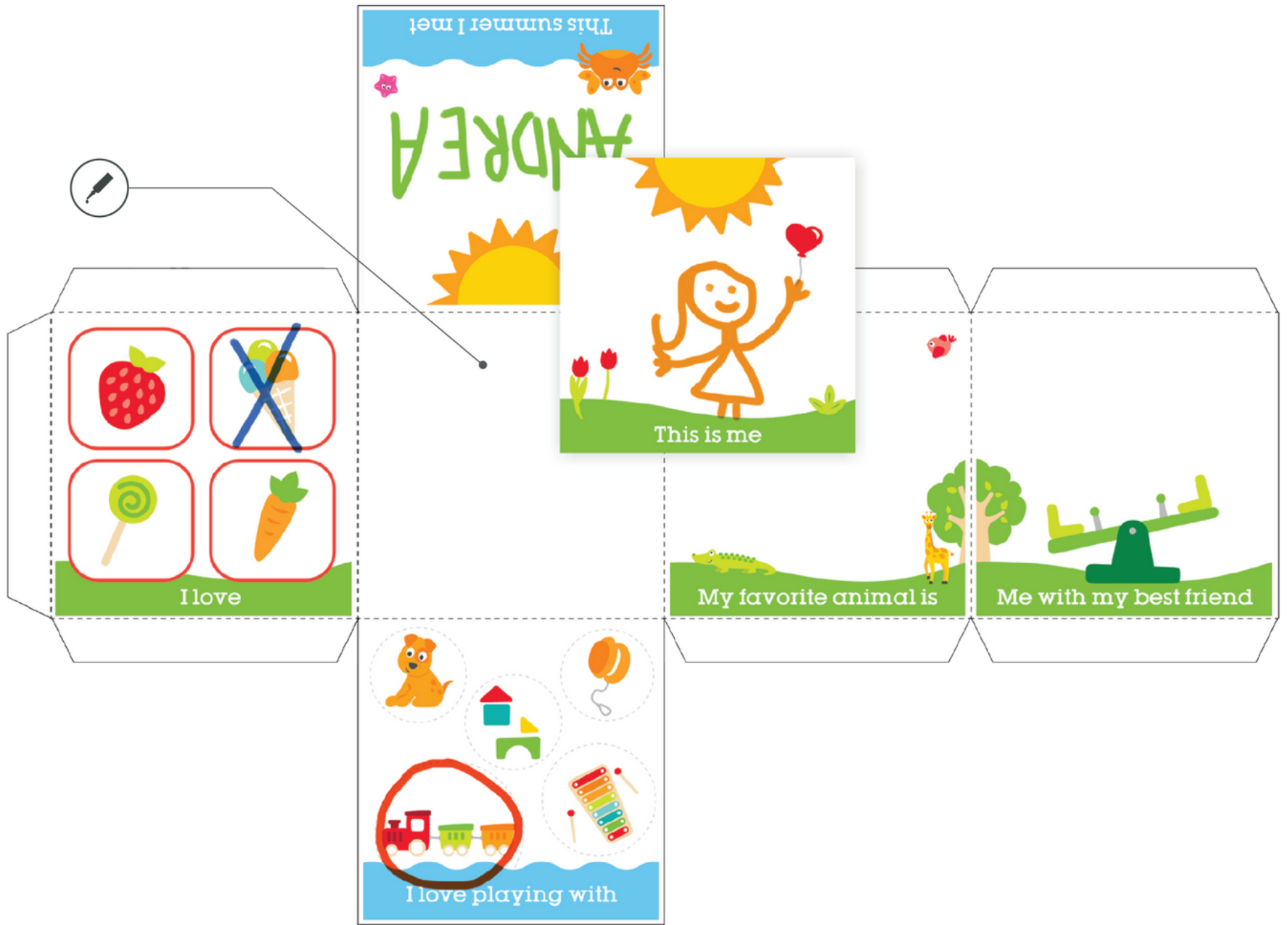
My favorite animal is



Me with my best friend



I love playing with





Instructions:

1. Print out the net and cut it out
2. Personalise each square, you can draw write and colour!
3. Cut out each square and glue them onto the cube
4. Fold up to create your personality cube!