

**THE PEAK OF URBAN FASHION.**



# CONTENTS

# FROM OUR *Lifestyle* COLLECTION



.06

**U21512**

The Cotton Corduroy  
5 Panel Trucker



.08

**U21503**

The 5 Panel Cushion  
Mesh Trucker



.10

**U20608RC**

The Recycled Cotton  
6 Panel Snapback



.12

**U20609**

The Cotton Chambray  
Baseball Cap



.14

**U20610TR**

The Rayon Polyester  
6 Panel Adjustable



.16

**U20502R**

The Recycled Trucker  
5 Panel Snapback



.18

**U15610**

The Old School 6 Panel  
Adjustable



.20

**U15615**

The Suede Polytwill 6  
Panel Adjustable



.22

**U15613**

The Double Sided Poly-  
twill 6 Panel Snapback



.24

**U15614**

The Waxed Cotton  
Canvas Adjustable



.26

**U15606**

The 6 Panel Flat Peak  
Snapback



.28

**U15607**

The Fashion 6 Snapback

# CONTENTS

# FROM OUR *Lifestyle* COLLECTION



.30

**U15608**

The 6 Panel Curved Peak Snapback



.32

**U15511**

The Vintage 5 Panel Strap-back



.34

**U15518**

The 5 Panel Curved Peak Snapback



.36

**U15603**

The Pro-style 6 Panel Fitted



.38

**U20612**

The Digital Pro-style 6 Panel Fitted



.40

**U15604**

The 6 Panel Flat Peak Fitted



.42

**U15501**

The 5 Panel Flat Peak Trucker



.44

**U15502**

The 5 Panel Curved Peak Trucker



.46

**U22610**

The Cotton Canvas Unstructured 6 Panel



.70

**U20900CB**

The Viscose Blend Cuffed Beanie

# CONTENTS

# FROM OUR *Technical* COLLECTION



.48

**U21608**

The Recycled Polyester  
6 Panel Baseball Cap



.50

**U15503**

The Pique Heather 6  
Panel Fitted Trucker



.52

**U20603**

The 100% Poly Recycled  
Birdseye Mesh 6 Panel



.54

**U20615**

The Laser Cut Technical  
6 Panel Baseball Cap



.56

**U15800**

The Edge Fitted



.58

**U15801**

The Edge Adjustable



.60

**U15611**

The Laser Cut  
Adjustable 6 Panel



.62

**U15618**

The High Tech 6  
Panel Curved Peak



.64

**U22600c**

The Outdoor 6 Panel  
Curved Peak



.66

**U22002WB**

The Wide Brim Hat



.68

**U22001s**

The Uflex Sports Cap



.80

**CUSTOM**

According to the  
categories explained

# CONTENTS

# FROM OUR *Youth* COLLECTION



.72

---

**KU15502**

The Youth Curved Peak  
Trucker



.74

---

**KU15603**

The Youth Pro-style  
Fitted Cap



.76

---

**KU15608**

The Youth Snapback  
6 Curved Peak



.78

---

**KU15606**

The Youth Flat Peak  
Snapback Cap



*Corduroy is  
cool again...*

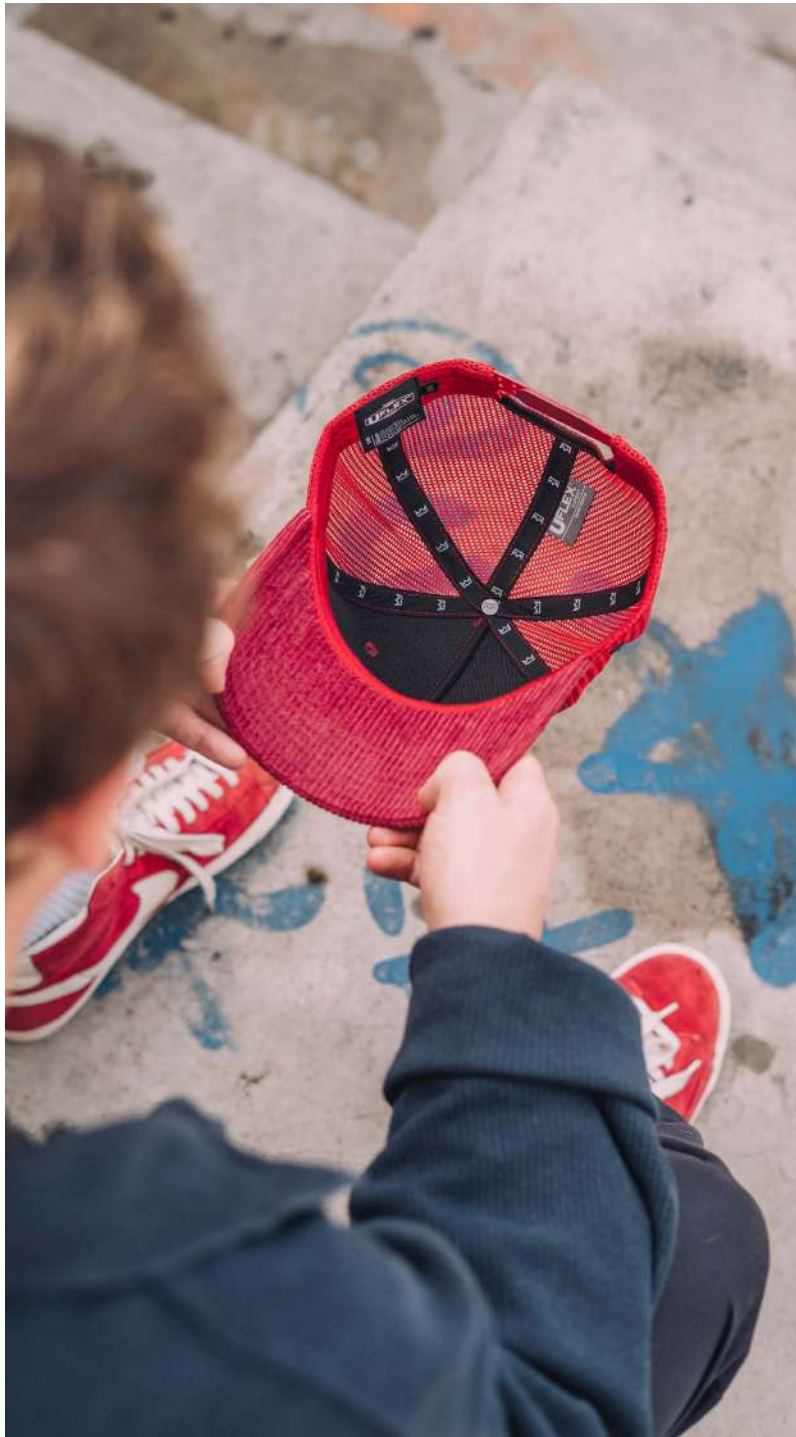
---

**- THE U21512 -**

COTTON CORDUROY  
5 PANEL TRUCKER

This modern trucker seamlessly combines a chunky ribbed corduroy peak with a meshed back. It's a unique, fun fashion piece - available in a bold colour range. An every season, easy going fit for sure.





**PINK**



**BURGUNDY**



**MUSTARD**



**BLACK**



**SKY BLUE**



**NAVY**



**OLIVE**



**\* GREY**



*\* Grey: Available from January 2023*

## THE U21512 - CAP CONSTRUCTION

100% Cotton Corduroy | 5 Panel structure | Anti-bacterial & quick dry sweatband | OSFM |  
Double row Polysnap



*There's a new  
trucker in town!*

---

**- THE U21503 -**

5 PANEL CUSHION  
MESH TRUCKER

This meshed-back, curved peak is like no other. Talk about a trucker style cap that takes practicality and comfort to a new level of premium. A classic fit for the everyday, in a colour for every season.







**BLACK**



**GREY MELANGE**



**CHARCOAL**



**MUSTARD**



**NAVY**



**KHAKI**



## **THE U21503 - CAP CONSTRUCTION**

65% Polyester + 30% Cotton + 5% Spandex | Double row Polysnap | 6 Panel structure | OSFM |  
Anti-bacterial & quick dry sweatband

*Good for your style -  
better for our planet.*

---

**- THE U20608RC -**

THE RECYCLED COTTON  
6 PANEL SNAPBACK

Made predominantly from recycled cotton canvas, this 6 panel is an innovative and sustainable, fashion forward design for the everyday. Crafted in a broad, bold colour range for your every mood.



made from  
**RECYCLED  
FABRICS**







made from  
**RECYCLED  
FABRICS**

**BLACK**



**LIGHT OLIVE**



**NAVY**



**RED**



**URBAN GREY**



**ROYAL**



## THE U20608RC - CAP CONSTRUCTION

60% Recycled cotton canvas | Double row polysnap | 6 Panel structure | OSFM |  
Anti-bacterial & quick dry sweatband

*Cotton caps that  
keep life casual.*

---

**- THE U20609 -**

THE COTTON CHAM-  
BRAY BASEBALL CAP

An easy going personality mixed with a lightweight, breathable fabric makes for an everyday kinda' cap. Casual wear dashed with unique colourways. This chambray style is soft to the touch.







**DARK GREY**



**BLUE**



**GREEN**



**KHAKI**



## THE U20609 - CAP CONSTRUCTION

100% Cotton chambray | 6 Panel structure | OSFM |  
Double row polysnap | Anti-bacterial & quick dry sweatband

*The peak of urban  
fashion has arrived.*

---

**- THE U20610TR -**

THE RAYON POLYESTER  
6 PANEL ADJUSTABLE

A casually trendy 6 panel with a versatile personality and contemporary finishes. Easy to fit to size with the fabric adjuster and matte black Uflex buckle. Easily paired with your summer wardrobe for an everyday fit.





**BLACK**



**GREY**



**NAVY**



**OLIVE**



**BLUE**



## **THE U20610TR - CAP CONSTRUCTION**

70% Polyester + 30% Rayon | 6 Panel structure | OSFM | Anti-bacterial & quick dry sweatband |



*Putting our planet first.*

---

**- THE U20502R -**

RECYCLED TRUCKER  
5 PANEL SNAPBACK

A sustainable update of the much loved 5 panel trucker. Made entirely from recycled materials, with an easy breathing mesh back and classic curved peak. Even the double row polysnap is recycled plastic!



made from  
**RECYCLED  
FABRICS**





made from  
**RECYCLED  
FABRICS**

**NAVY / WHITE**



**KHAKI / BLACK**



**RED / WHITE**



**BLACK**



**BLACK / WHITE**



**GREY / BLACK**



## THE U20502R - CAP CONSTRUCTION

100% Recycled polyester mesh & twill | 6 panel structure | Single row recycled plastic polysnap | OSFM

*Keeping with  
the classics!*

---

**- THE U15610 -**

THE OLD SCHOOL 6  
PANEL ADJUSTABLE

Boasting a genuine leather strap, fitted with a Uflex matte black buckle, this 6 panel cap offers the comfort and fit of the old school but in a refreshed strap-back style. Easy to adjust for a good fit.







**PINK**



**RED**



**BURGUNDY**



**KHAKI**



**SKY BLUE**



**NAVY**



**GREY**



**BLACK**



## THE U15610 - CAP CONSTRUCTION

98% Cotton + 2% Spandex | 6 Panel structure | Adjustable leather strap with matte black buckle | OSFM

*It's out with the old -  
and in with the suede.*

---

**- THE U15615 -**

SUEDE POLYTWILL 6  
PANEL ADJUSTABLE

We're all about a cap that is out of the ordinary, and has something special about it. And this suede style is just that! An absolute pleasure all round.







**OLIVE**



## **THE U15615 - CAP CONSTRUCTION**

100% Polyester | 6 Panel structure | Double row polynaps |  
Anti-bacterial & quick dry sweatband | OSFM



*A one-of-a-kind  
kinda' cap.*

---

**- THE U15613 -**

DOUBLE SIDED POLYTWILL  
6 PANEL SNAPBACK

This sleek, slick and structured graphite cap boasts benefits of UV guard and quick dry technology, along with a dry-fit, anti-bacterial sweatband - an easy choice, available in a single graphite colour.





GRAPHITE



## THE U15613 - CAP CONSTRUCTION

100% Polyester | 6 Panel structure | Double row polynap | OSFM | Anti-bacterial & quick dry sweatband



*Practicality never  
looked this good.*

---

**- THE U15614 -**

THE WAXED COTTON  
CANVAS ADJUSTABLE

This contemporary style stitches trendy, urban and chic into a water resistant, 6 panel adjustable. A smashing fit for summer days, and those sneaky afternoon rains. The durable canvas boasts longevity.







**CHARCOAL**



**NAVY**



**DARK TAN**



**BROWN**



**GREEN**



## **THE U15614 - CAP CONSTRUCTION**

Waxed 100% cotton canvas | 6 Panel structure | Double row polynap | Cotton sweatband | OSFM

*Team flat -  
cap for life.*

---

**- THE U15606 -**

THE 6 PANEL FLAT  
PEAK SNAPBACK

A broad range of colour schemes means that now you can have one of these classics for every occasion, whatever the mood. 6 Panels of well considered design to ensure a long-lasting, timeless look.





**BURGUNDY /  
GREY MELANGE**



**BLACK / CAMO**



**BLACK /  
GREY MELANGE**



**NAVY**



**CAMO**



**BURGUNDY**



**GREY MELANGE**



**CHARCOAL MELANGE**



**BLACK**



## THE U15606 - CAP CONSTRUCTION

80% Acrylic + 20% Wool | 6 Panel structure | Double row polysnap | OSFM



# *Some snapback sophistication*

---

## **- THE U15607 -**

THE FASHION  
6 SNAPBACK

Unique in its sophistication for a snapback, this cap's horizontal front panels boast a casual but fashionable look. For something a little different and unique that makes a statement.





**GREY MELANGE**



**NAVY**



**BLACK**



**BLACK /  
GREY MELANGE**



**BURGUNDY /  
GREY MELANGE**



## THE U15607 - CAP CONSTRUCTION

80% Acrylic + 20% Wool | 6 Panel structure | Metal eyelets | Double row polysnap | OSFM



*A fashionable fit  
for the everyday.*

---

**- THE U15608 -**

6 PANEL CURVED  
PEAK SNAPBACK

Following the latest trend, this curved peak proves to be the fashion of the day. The classic baseball-cap cut can be dressed up or down, and never be out of style. Clean, minimal and good fitting.







**GREY MELANGE /  
NAVY**



**BURGUNDY /  
GREY MELANGE**



**NAVY /  
GREY MELANGE**



**GREY MELANGE**



**CHARCOAL MELANGE**



**BLACK**



**NAVY**



**CAMO**



## THE U15608 - CAP CONSTRUCTION

80% Acrylic + 20% Wool | 6 Panel structure | Double row polysnap | OSFM |

*Not just your dad's  
favourite cap style...*

---

**- THE U15511 -**

THE VINTAGE 5 PANEL  
STRAP-BACK

This cotton curved peak may be the comfiest dad cap on the market - but it's more than just a soft feeling, good fitting style. Special features include a Uflex brass buckle and a soft, self fabric adjuster.







**PINK**



**BROWN**



**BURGUNDY**



**OLIVE**



**SKY BLUE**



**NAVY**



**GREY**



**CHARCOAL**



## THE U15511 - CAP CONSTRUCTION

100% Cotton Twill | 5 Panel structure | Enzyme wash | Brass Uflex buckle on fabric strap | OSFM



*Made for the urban  
explorers of today...*

---

**- THE U15518 -**

THE 5 PANEL CURVED  
PEAK SNAPBACK

Introducing the ever comfortable, always suitable 5 panel curved peak. Fit for day-to-day living, this versatile cotton cap boasts a stylish look and easily adjustable fit, thanks to the double row polynap.



PINK



RED



STONE



KHAKI



OLIVE



WHITE



URBAN GREY



NAVY



CHARCOAL MELANGE



BLACK



\* RUST



\* DENIM



\* NEON-GREEN



\* NEON-ROSE



\* GREY MELANGE



## THE U15518 - CAP CONSTRUCTION

100% Cotton | Single row polysnap | 5 Panel structure | OSFM |

\* Bottom row: Available from January 2023



# *A closed back classic*

---

**- THE U15603 -**

THE PRO-STYLE  
6 PANEL FITTED

Clean, refined, comfortable - three words to describe this closed back, classic baseball cap. Available in different sizes to ensure you get the best feeling fit. An easy-going style to be dressed up or down.



**WHITE**



**GREY**



**GREY MELANGE**



**CHARCOAL MELANGE**



**BLACK**



**KHAKI**



**RED**



**BURGUNDY**



**ROYAL**



**NAVY**



## THE U15603 - CAP CONSTRUCTION

98% Cotton + 2% Spandex | Fitted stretch enclosure | 6 Panel structure | S-M (56cm) | L-XL (58cm) | XXL (60cm) |



*The fitted pro-style's  
unique colour range.*

---

**- THE U20612 -**

THE DIGITAL PRO-STYLE  
6 PANEL FITTED

Looking for something fun and unusual?  
Look no further, your favourite pro-style  
just got funky! This 6 panel adjustable is  
now available in unique and distinctive  
digital colour versions for something new!





DIGITAL LIGHT GREY



DIGITAL BLUE



DIGITAL GREY



## THE U20612 - CAP CONSTRUCTION

100% Polyester | 6 Panel structure | Fitted stretch enclosure |  
S-M (56cm) | L-XL (58cm) | XXL (60cm) |



*Fitted &  
flawless.*

---

**- THE U15604 -**

THE 6 PANEL FLAT  
PEAK FITTED

Known for its premium fabrics and closed back, the 6 Panel Flat-Peak is both comfortable and elegant, an ideal pair for a sunny winter's day. The closed structure ensures a snug fit, and stylish look.





**BLACK**



**CHARCOAL MELANGE**



**GREY MELANGE**



**NAVY**



## **THE U15604 - CAP CONSTRUCTION**

83% Acrylic + 15% Wool + 2% Spandex | 6 Panel structure | Wool blend fabric | S-M (56cm) | L-XL (58cm) | XXL (60cm) |



*A flat-cap snapback  
never looked better.*

---

**- THE U15501 -**

THE 5 PANEL FLAT  
PEAK TRUCKER

A true piece of craftsmanship, this trucker is made with immaculate attention to detail and a focus on fit; making it a must-have flat peak. Complete with a premium feeling finish.





**BLACK**



**CAMO**



**GREY MELANGE**



**CHARCOAL MELANGE**



## THE U15501 - CAP CONSTRUCTION

80% Acrylic + 20% Wool + 100% Polyester back (Charcoal & Grey)  
| 100% cotton + 100% Polyester back (Black & Camo) | 5 Panel  
structure | Double row polysnap | OSFM |



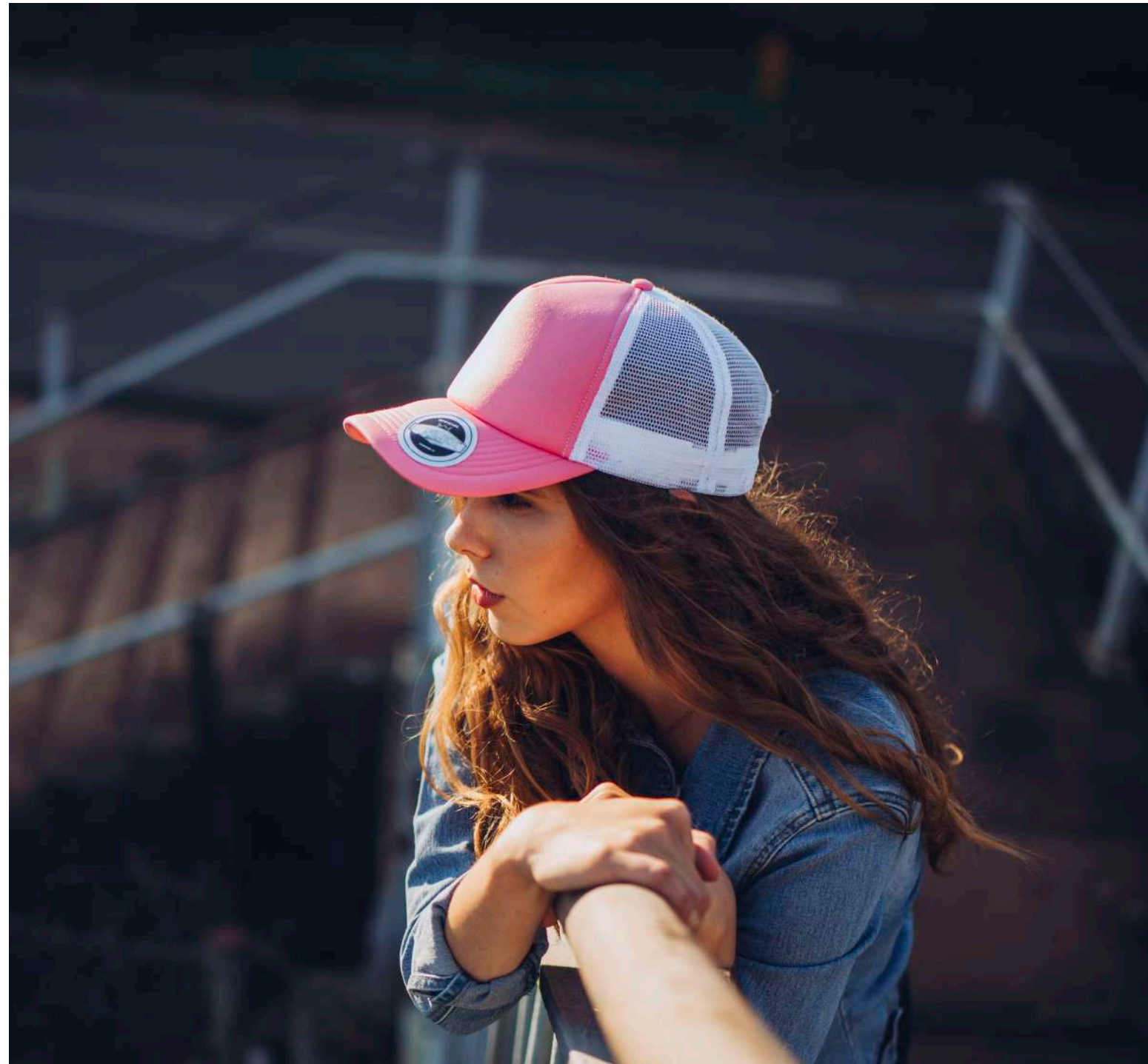
*A laid back-  
type trucker.*

---

**- THE U15502 -**

5 PANEL CURVED PEAK  
SNAPBACK TRUCKER

Hip and happening, this snapback trucker is the latest fashion statement, boasting a trendy style and seamless fit. The meshed back makes for an ideal summer fit as it keeps you feeling cool and comfortable.



WHITE



GREY MELANGE



CHARCOAL MELANGE



BLACK / WHITE



BLACK



SKY BLUE / WHITE



ROYAL / WHITE



NAVY / WHITE



GREEN / WHITE



CAMO



RED / WHITE



RED



PINK / WHITE



PINK



## THE U15502 - CAP CONSTRUCTION

100% Polyester | 5 Panel structure | Foam backed peak | OSFM | Double row polysnap |



*All is cool, casual  
and comfortable.*

---

**- THE U22610 -**

COTTON CANVAS UN-  
STRUCTURED 6 PANEL

Laid back, long-lasting and all round a good fit. This adjustable cap brings modern features together in a retro type style, which is easy to pair with an everyday outfit to keep things casual.





**\*\*Light Pink: Available from January 2023**

## THE U22610 - CAP CONSTRUCTION

100% Heavy Canvas Washed | Self-fabric clip closure | Unstructured 6 Panel | OSFM | Standard sweatband |



*Sportswear  
that cares.*

---

**- THE U21608 -**

RECYCLED POLYESTER  
6 PANEL BASEBALL CAP

Breathable, lightweight and 100% recycled!  
This snapback is your outdoor companion -  
whether you're hiking, fishing, running or just  
wandering outdoors. Complete with all the  
technical good stuff for your added comfort.



made from  
**RECYCLED  
FABRICS**



WHITE



GREY



BLACK



ROYAL



NAVY



RED



## THE U21608 - CAP CONSTRUCTION

Recycled polyester Ottoman fabric | 6 Panel structure | OSFM | Anti-bacterial & dry fit sweatband | Double row polynaps |



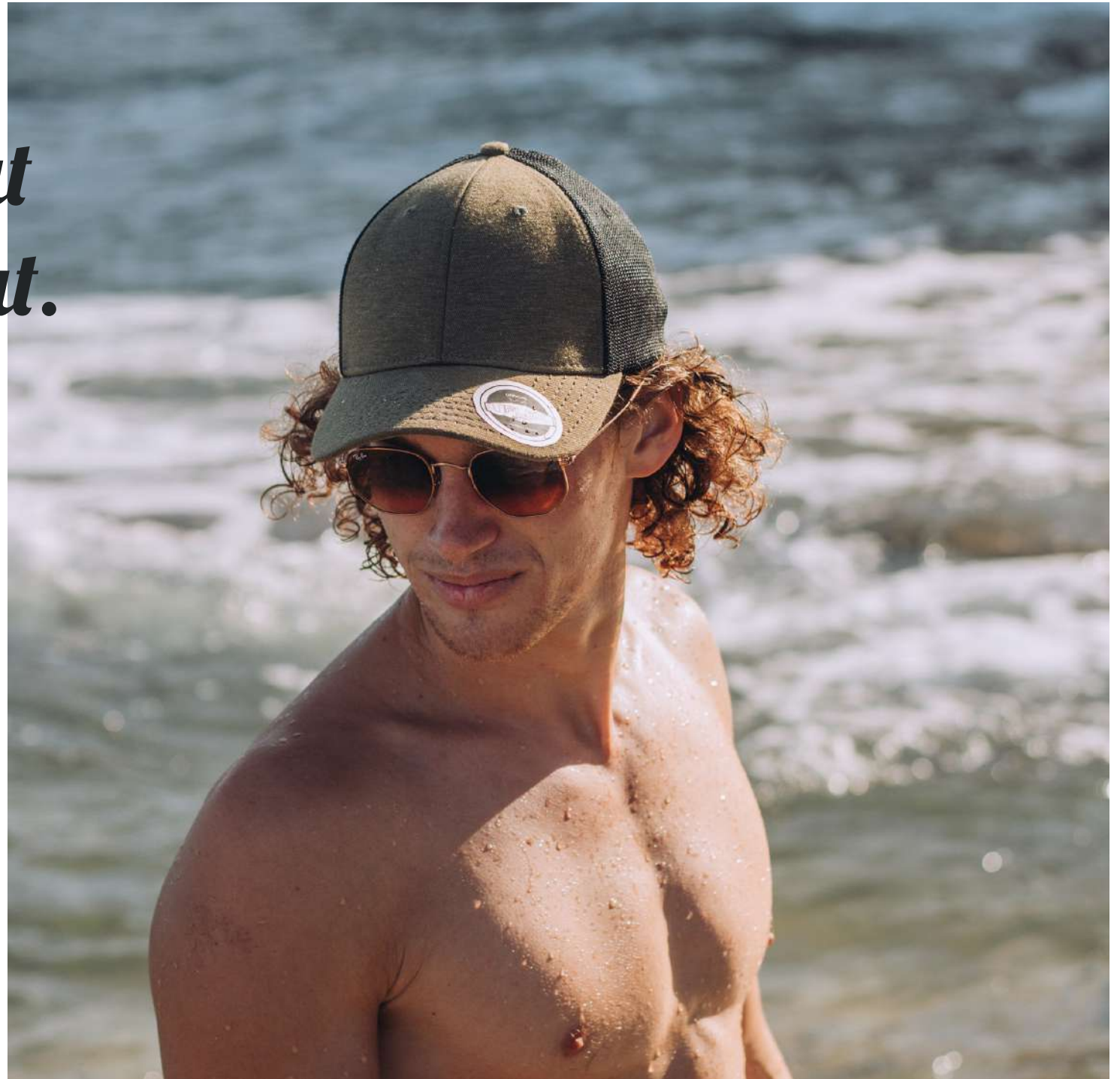
*Ready to go at  
a drop of a hat.*

---

**- THE U15503 -**

THE PIQUE HEATHER  
FITTED TRUCKER

This innovative design style is a cut above the rest and an ideal fit for South African summertime. The breathable pique closed back will keep you feeling, and looking cool even in the heat of things.





**ARMY GREEN**



**CHARCOAL**



**MAROON**



**SEA BLUE**



### **THE U15503 - CAP CONSTRUCTION**

65% Polyester + 30% Cotton + 5% Spandex | 6 Panel structure |  
Anti-bacterial & dry fit sweatband | Quick dry & UV guard |  
S-M/ L-XL/ XXL |



*An all round  
do - gooder!*

---

**- THE U20603 -**

100% POLY RECYCLED  
BIRDSEYE MESH 6 PANEL

A cap designed to be kinder on our planet,  
and your body. The birds eye mesh makes  
for an easy breathing, quick drying style -  
with an antibacterial sweatband to keep  
you feeling comfortable.



made from  
**RECYCLED  
FABRICS**



 | *made from*  
**RECYCLED  
FABRICS**

**GREY**



**NAVY**



**BLACK**



**WHITE**



## THE U20603 - CAP CONSTRUCTION

100% Poly recycled birdseye mesh | 6 Panel structure | OSFM |  
Anti-bacterial & dry fit sweatband | Quick dry & UV guard | Velcro



*Made especially for  
that summer sun!*

---

**- THE U20615 -**

LASER CUT TECHNICAL  
6 PANEL BASEBALL CAP

A lightweight, well ventilated polyester cap, with a flexible nature and quick dry capabilities. Boasting an easy going fit owing to the Velcro sport closure, which makes adjustments on the run quick and simple.





**BLACK**



**CHARCOAL**



**NAVY**



### **THE U20615 - CAP CONSTRUCTION**

---

100% Polyester rip-stop | 6 Panel structure | Velcro Adjustable sports closure | Anti-bacterial & quick dry sweatband | OSFM |



*Cutting edge design  
in one seamless fit.*

---

**- THE U15800 -**

THE EDGE FITTED

When cutting edge design meets comfortable, well considered headwear - you get the Uflex Edge Fitted. A closed style cap with quick-dry, anti-bacterial properties for your everyday workouts.





**BLACK**



**LIGHT GREY**



**WHITE**



**CHARCOAL**



## **THE U15800 - CAP CONSTRUCTION**

96% Polyester | 4% Spandex micro Rip-stop | 6 Panel structure |  
Anti-bacterial & Dry fit sweatband | Stitch-less Tech & taped seams  
| Quick dry & UV guard | S-M/ L-XL/ XXL |



*Summer just got a  
new seamless style.*

---

**- THE U15801 -**

THE EDGE ADJUSTABLE

A match for any Summer's day run or outdoor activity! Technically designed to always ensure a good fit and keep things fresh, even whilst working out. Fitted with an anti-bacterial and dry-fit sweatband.





### **THE U15801 - CAP CONSTRUCTION**

---

96% Polyester | 4% Spandex micro Rip-stop | 6 Panel structure |  
Anti-bacterial & Dry fit sweatband | Stitch-less Tech & taped seams  
| Quick dry & UV guard | S-M/ L-XL/ XXL | Double row polysnap |



*Laser cut and  
ready to run!*

---

**- THE U15611 -**

THE LASER CUT 6  
PANEL ADJUSTABLE

Designed specifically to maximise air-flow, this laser cut adjustable is a perfect match for those feeling active. With laser cut polyester back and side panels, this cap will ensure you're kept feeling cool.





## **THE U15611 - CAP CONSTRUCTION**

---

100% Polyester | Velcro strap adjustable | OSFM | Laser cut panels



*The top peak  
performance.*

---

**- THE U15618 -**

THE HIGH TECH 6  
PANEL CURVED PEAK

This performance 6 panel will keep you cool whilst performing at your peak! (Thanks to the breathable mesh panels.) Although a practical piece of active-wear, it can be dressed down for a casual fit too.





**PINK**



**PINK / WHITE**



**RED**



**SKY BLUE / WHITE**



**NAVY**



**ROYAL / WHITE**



**CHARCOAL**



**BLACK / WHITE**



**BLACK**



## THE U15618 - CAP CONSTRUCTION

100% Polyester | 6 Panel structure | Double row polysnap | OSFM |



*Another reason to  
explore the outdoors.*

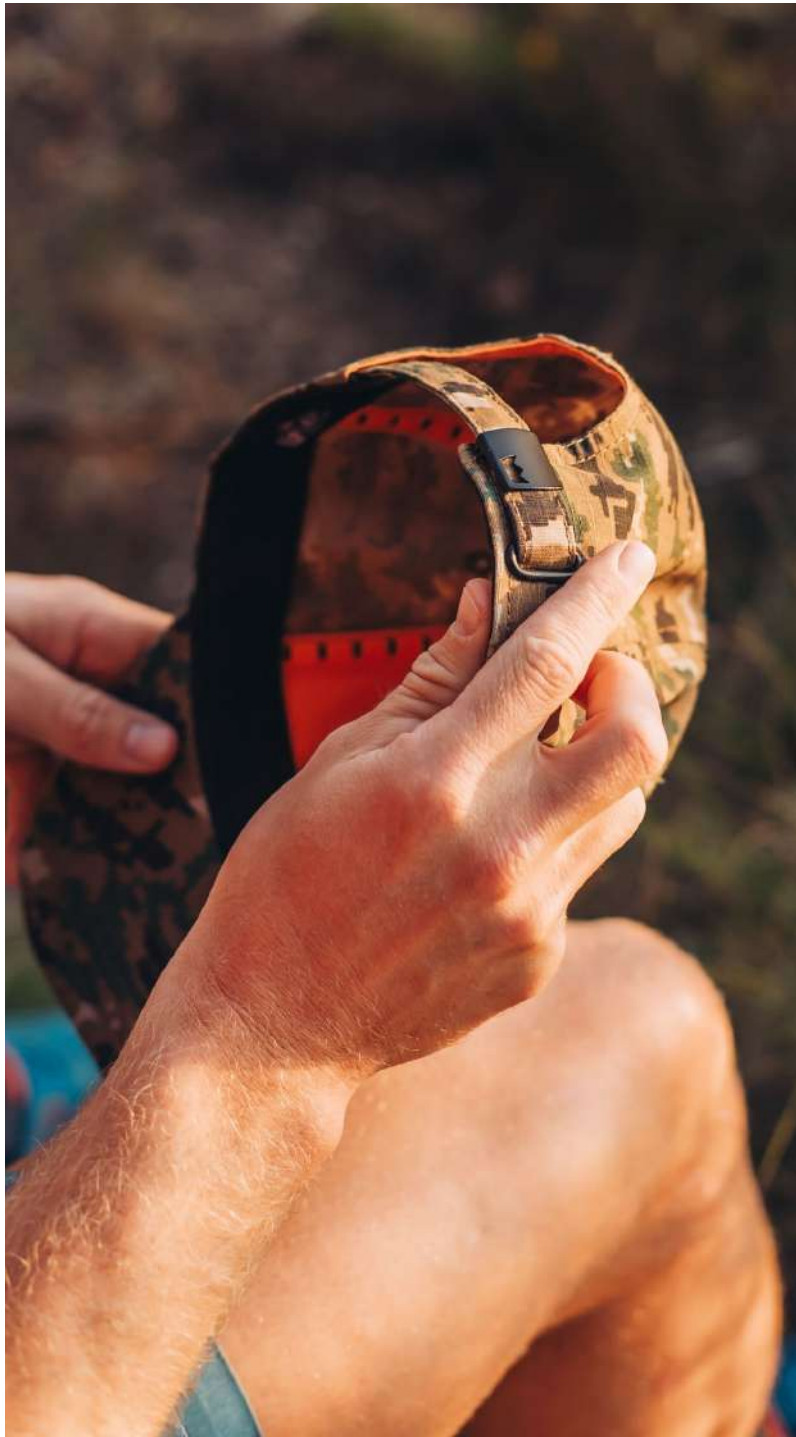
---

**- THE U22600C -**

THE OUTDOOR 6 PANEL  
ADJUSTABLE CAP

A high-tech style that caters to all your outdoor exploration needs. This adjustable 6 panel considers all potential requirements to keep you comfortable on trails, including water repellent and UV guard fabrics.





NAVY



OLIVE



KHAKI



CAMO GREEN



SAND PIXEL



## THE U22600C - CAP CONSTRUCTION

100% Cotton Rip-stop | 6 Panel structure | UV resistant treatment | Anti-bacterial & Dry fit sweatband | Water Repellent | Fabric adjuster with matte black buckle | OSFM |



*Broaden your  
horizons...*

---

**- THE U22002WB -**

THE WIDE BRIM HAT

Get the 'full Monty' with our wide brim hat. Complete with a water repellent finish, high visibility internal panels and UV resistant materials. There's no better style to get out and about in the summer sunshine with!





**NAVY**



**OLIVE**



**KHAKI**



**CAMO GREEN**



**SAND PIXEL**



## **THE U22002WB - HAT CONSTRUCTION**

100% Cotton Rip-stop | 6 Panel structure | Anti-bacterial & quick dry sweatband | UV Resistant |  
High visibility internal panels | Internal floating foam insert | Water repellent finish | UPF Factor | OSFM



*Catch me  
outside!*

---

**- THE U22001S -**

THE UFLEX  
SPORTS CAP

Are you ready for a cap that can keep up with your adrenaline seeking lifestyle? From lifting in the gym, to trail running in the Drakensberg - this is the style that will keep you comfortable, cool and on track.





**BLACK**



**TAN**



**NAVY**



**OLIVE**



## **THE U22001S - CAP CONSTRUCTION**

6 Panel structure | OSFM | Soft Velcro Adjustable sports closure |  
Anti-bacterial & quick dry sweatband | Soft Sport Peak |  
Laser cut side panels for extra cool comfort |



# *Warming up the winter trends...*

---

## - THE U20900BC -

### THE BLENDED CUFFED BEANIE

Add some texture to your winter wardrobe with our classic, cosy cuffed beanie. This timeless style boasts a snug fit and is made from soft fabrics. Style the cuff as you please, and enjoy the variety of colour!



GREY MELANGE



NATURAL



**SUNSHINE**



**MUSTARD**



**CAMEL**



**BROWN**



**FOREST GREEN**



**ARCTIC-BLUE**



**SKY BLUE**



**SAGE**



**PETROL**



**NAVY**



**PINK**



**RED**



**MAROON**



**CHARCOAL MELANGE**



**BLACK**



## THE U20900BC - BEANIE CONSTRUCTION

50% Viscose + 22% Nylon + 28% Polyester | OSFM |



# *Snap into summer!*

---

**- THE KU15502 -**

THE YOUTH CURVED  
PEAK TRUCKER

A snapback style that makes sun protection a simple game with your kids. This summer, invest in one of these 'snap-to-size' styles for your young family members, and you won't ever look back!





**BLACK**



**GREY MELANGE**



**RED**



**ROYAL / WHITE**



**RED / WHITE**



**BLACK / WHITE**



## **THE KU15502 - CAP CONSTRUCTION**

100% Polyester | Double row polynap | 5 Panel structure | OSFM |



*A fit for all  
the seasons!*

---

**- THE KU15603 -**

THE YOUTH PRO-STYLE  
FITTED CAP

A snug fitting, sun protecting piece of headwear we promise your children will love. This closed, curved peak is the best partner for your children's all round wardrobe, boasting decades of durability.







**DARK GREY**



**BLUE**



**GREEN**



**KHAKI**



## **THE KU15603 - CAP CONSTRUCTION**

98% Cotton + 2% Spandex | 6 Panel structure | S-M(54) / L-XL (56)



***Make it cool, but  
make it for kids!***

---

**- THE U15608 -**

THE YOUTH SNAPBACK  
6 CURVED PEAK

And here we have a cool looking, good fitting, smaller sized snapback for the younger generations. This classic and timeless style fits right into any wardrobe, and will last throughout the seasons.





**BLACK**



**GREY MELANGE**



**RED**



**NAVY**



## **THE KU15608 - CAP CONSTRUCTION**

80% Acrylic + 20% Wool | Double row polysnap | OSFM |  
6 Panel structure |



# *Snapback style for all ages!*

---

**- THE KU15606 -**

THE YOUTH FLAT PEAK  
SNAPBACK CAP

For all the youth who are going for a sassy look with loads of character! There's nothing that quite beats a flat cap snapback's attitude and level of coolness. Talk about simple, stylish sun protection!







**BLACK**



**GREY MELANGE**



**NAVY**



**RED**



## **THE KU15606 - CAP CONSTRUCTION**

80% Acrylic + 20% Wool | Double row polysnap | OSFM |  
6 Panel structure |



*Your brand -  
Our expertise*

---

## **CUSTOMISATION**

THE THREE CATEGORIES:

- 1 | CATALOGUE RANGE
- 2 | CUSTOM COLOURWAYS
- 3 | BESPOKE DESIGN



## **01. THE CATALOGUE RANGE**

## **02. CUSTOM COLOURWAYS**

## **03. BESPOKE DESIGNS**

---

### **LEVEL #1 CUSTOMISATION**

#### **BASIC EMBELLISHMENTS**

This catalogue displays the entirety of our 2021 headwear collection. From this wide variety of styles, you are able to select your preferred cap and customise it through embroidering (or something similar) your choice of design onto it.

### **LEVEL #2 CUSTOMISATION**

#### **A LITTLE EXTRA**

Our Custom Colourway Range has been devised for those of you wanting a little more than the set-standard. The range allows you to select a particular cap style from our Catalogue Range, and gives you the freedom to choose your own cap colours, use a unique woven label, and offers extra options for stickers and inner tapes.

### **LEVEL #3 CUSTOMISATION**

#### **THE WORKS**

This range takes customisation to the next level. When going the bespoke route, your brand and Uflex essentially team up and collaborate in order to design a unique cap, for your brand in particular. You make all the choices, from colour and shape, to closures, inner branding, and prints design.