



New  
Cold  
Room

COLDKIT  
OPTIMA ]

*Caring for  
what you care for*



**AVAILABLE IN 48H**



**EASIER TO ASSEMBLE**



**COMPETITIVE PRICE**



**MORE CUSTOMIZATION  
OPTIONS**

## Introducing the new Coldkit Cold Room

Based on the needs of our customers, we have developed the new Optima cold room.

The Optima is equipped with innovative features whose purpose is to improve and facilitate the work of both the installers and the final customer.

### Easier to assemble due to its modular system with 4 angles

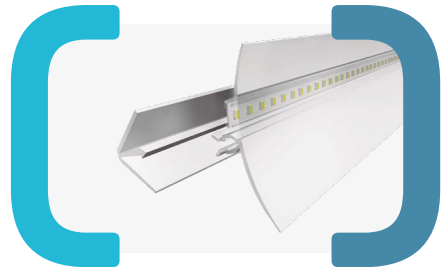
This new system, with 4 white colored (RAL 9010/ Ref.ª 1006) injected vertical angles, offers more flexibility and better space optimization for the design of small cold rooms, as well as allowing layouts of large cold rooms, as possible with our Matrix cold room. The Optima is modular by 20cm in almost its entire range.

### Optional temperature datalogger (POD)

With this system, you may record cold room temperature or humidity. Any incident alert will be transmitted by APP to your mobile phone or computer.

### New optional lighting system

For the new Optima cold room we have create a LED lighting system integrated in the coving profile, whose energy consumption is minimal. In addition to its aesthetic innovation, it is easy to clean and avoids the accumulation of dirt on the lamps.



Lighting System

### Available Heights

Optima is available with 2; 2.20; 2.40 and 2.60 meters outside height.

# COLDKIT OPTIMA

## OPTIMA IS AVAILABLE IN TWO MODALITIES:

### With flooring

The floor panels are reinforced and have resistant anti-slip phenolic resin coating and with Class 3 Anti-Slip Classification Certificate (the same required in outdoor swimming pool areas).

**Optionally:** Anti-slip flooring with stainless steel finish or super-reinforced flooring in both finishes recommended for especially high service traffic. It has an interior 10mm plywood (CTBX) lining, reinforced with a 0,6mm anti-slip stainless steel sheet on another 0,5mm thick lacquered sheet adhered to the inner face of the plywood.



#### Panel Features

**Available thicknesses:** 85 and 105mm  
**Color:** White RAL 9010 / Ref. 1006



**Negative  
Temperatures**

**in 4 exterior heights:**

2m	2,40m
2,20m	2,60m

### Without flooring

Supplied with a special U-shaped PVC profile that facilitates quick installation and fixing. This part provides an interior and exterior skirting profile, ensuring simple assembly and an impeccable technical and aesthetic finish.

#### Panel Features

**Available thicknesses:** 85mm  
**Color:** White RAL 9010 / Ref. 1006



**Positive  
Temperatures**

**in 4 exterior heights:**

2,03m	2,43m
2,23m	2,63m

### Modular and customisable

Adaptable to the needs of each business, the exterior finishes and internal layout at the customer's discretion.

Optima is based on a modulation of 20 on 20cm, practically in the entire range, excluding only some dimensions.

### Installation in small spaces

Since Optima is assembled from the inside out, it can be installed without need for additional assembly space.

## Hinged door including panel frame

The doors, manufactured by Coldkit, are supplied in different sizes depending on the chosen cold room height. It is possible to move the door panel leaf to adapt it to the characteristics of the installation.

All our hinged doors include a key lock, panic bar and right-left opening direction (mention in the order).

Sliding door available on request with anodised aluminium guide rail with fixed handle, also made of aluminium.

With flooring Free passage:	Without flooring Free passage:
1810x700mm (thickness 105mm)	1900x800mm
1830x700mm (thickness 85mm)	2000x800mm (minimum frame height 2230mm)
1900x800mm e 2000x800mm (minimum frame height 2200 mm)	<b>The doors can be integrated in 1000 and 1200mm wide panels.</b>



Lock detail

## Refrigeration system available

On request, the Optima cold room can be delivered together with a monobloc refrigeration unit to obtain a fully equipped assembly.

The standard monobloc is for wall mounting. Available also ceiling mount or split models.



Hinged door included

## Easy to assemble and disassemble

The fixation system between modules consists of two metal latches with anti-corrosion treatment, mounted on highly resistant PVC boxes. Steam barrier continuity is guaranteed by means of a polyethylene or silicone, guaranteeing adequate insulation. The fixation points form part of the same panel and do not require additional assembly parts. Fast and simple assembly, without any need for cutting.



Refrigeration system available

## Sets cold rooms

The Optima allows to create sets of two or more cold rooms, adding partition walls with fixing by means of profiles.



Easy to assemble and disassemble



# COLDKIT OPTIMA ]



## Certifications

All Coldkit product factories have ISO 9001 certification.

The panel of our cold rooms has CE marking (CE) and our panel is certified according to the European Euroclass system, which classifies construction materials in accordance with their fire reaction and behaviour, obtaining **Bs2d0 classification**.

The floor panels have a resistant anti-slip phenolic resin coating with **Class 3 Anti-Slip Classification Certificate** (the same required in outdoor swimming pool areas).



## Optional temperature logger (POD)

### Models:

#### PB3

Temperature reading -20° to +60°C

#### PA3

Moisture reading

#### PE1

Extensible probe for temperatures from -80° to +80°C

The PODs are temperature recorders certified with ISO 17.025, valid for industry, health, HACCP, IFS, ISO 22.000, etc.

The data is read through an APP, being stored in the Cloud, and can be consulted through the mobile phone or PC.

### Available in a fully equipped version

For each Optima model, there is a Coolblok aluminium shelving solution available that is composed of 4 levels, 470mm in depth and 1.670mm or 2.000mm in height. (Other depths available upon request).

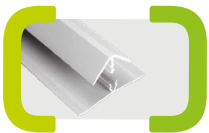
**Also available:** strip curtains, pressure balance valves (for negative cold rooms), optional coving profile and emergency equipment.



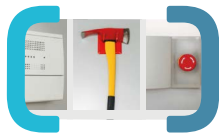
Strip curtains



Pressure balance valves



Coving profile



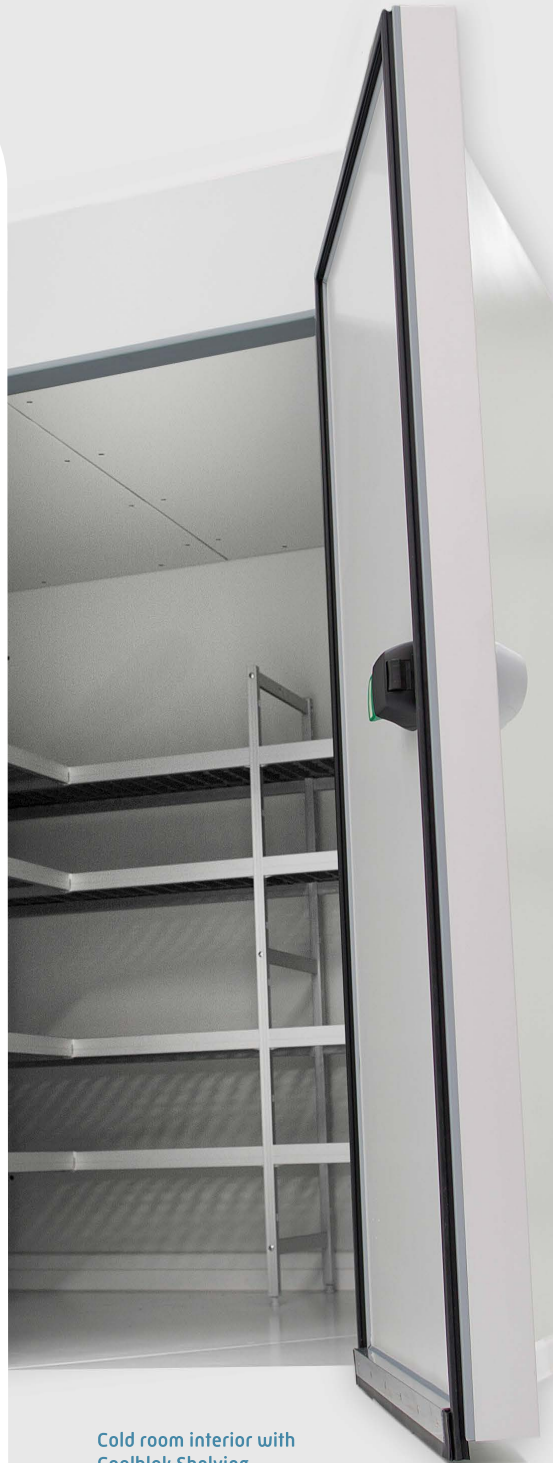
Emergency equipment

### Coolblok

The modular shelving system that will keep the working areas of your hospitality business organized.

- Sturdy construction that adapts to different layouts
- Easy assembly
- Flexible modular system
- Easy to clean: NF Certified in Food Hygiene
- Modular and customizable
- Variety of sizes: standard and Gastronorm shelves

Coolblok shelving systems are compatible with Optima cold rooms.



Cold room interior with Coolblok Shelving

# COLDKIT

11C-EN-0919



**PUREVER  
INDUSTRIES**

*Protecting Life*

**[info@coldkit.com](mailto:info@coldkit.com) | [www.coldkit.com](http://www.coldkit.com)**

Lugar do Poço Forrado, Apartado 7,  
3524-909 Nelas - Portugal  
(+351) 232 941 280