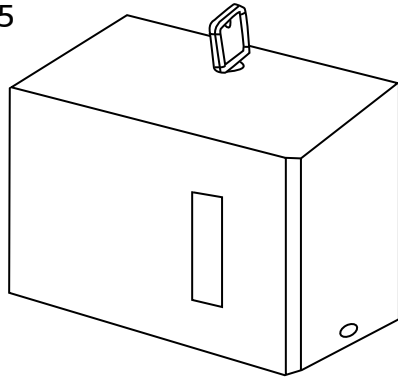


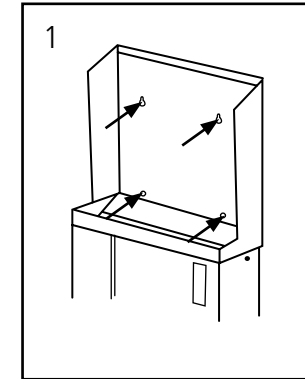
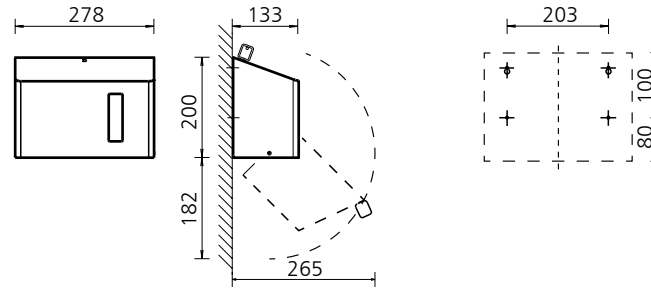
# SanTRAL® HSU

Papierhandtuchspender • Paper towel dispenser  
Distributeur d'essuie-mains en papier  
Handdoekdispenser

## SanTRAL® HSU 15



## SanTRAL® HSU 15



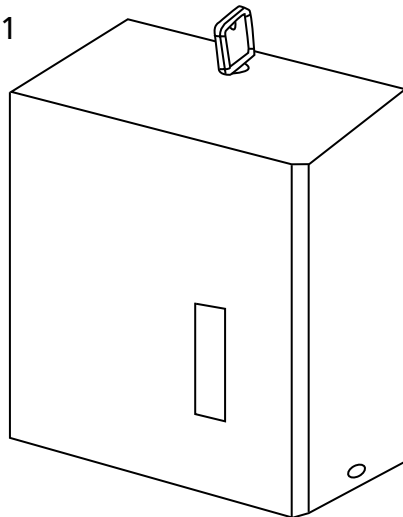
Gerät mit 4 Schrauben und Dübeln befestigen.

Wall mounting by 4 plugs and screws.

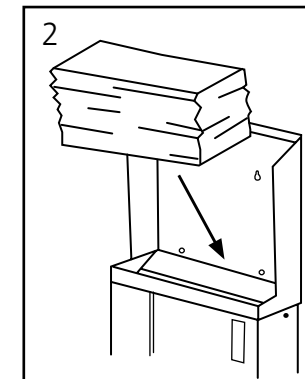
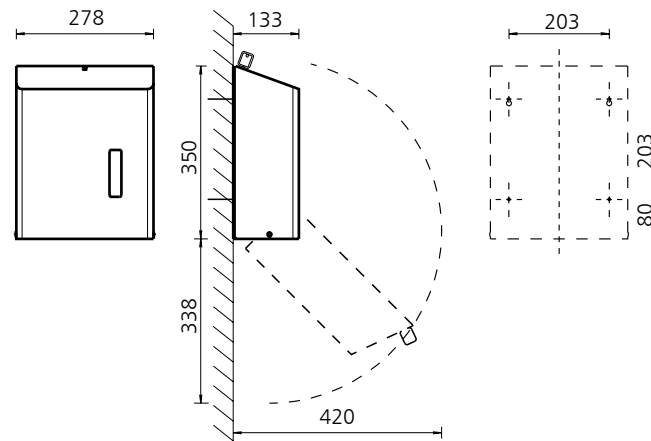
Fixation murale à l'aide des 4 vis et douilles.

Dispenser bevestigen met 4 pluggen en schroeven.

## SanTRAL® HSU 31



## SanTRAL® HSU 31



Gerät befüllen.

Fill up the unit.

Recharger l'appareil.

Vul de dispenser.

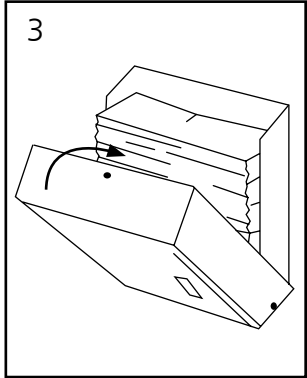
6300100/05.10 Technische Änderungen vorbehalten.  
1412567/05.10 Technical modifications reserved.  
Modifications techniques réservées.  
Technische wijzigingen voorbehouden.

Maße in mm  
Dimensions in mm  
Dimensions en mm  
Maten in mm

Ophardt Hygiene-Technik GmbH + Co. KG • Lindenu 27  
47661 Issum • Germany  
Phone +49 28 35 18-0 • Fax +49 28 35 18-77  
Email info@ophardt.com • www.ophardt.com

# SanTRAL® HSU

Papierhandtuchspender • Paper towel dispenser  
Distributeur d'essuie-mains en papier  
Handdoekdispenser

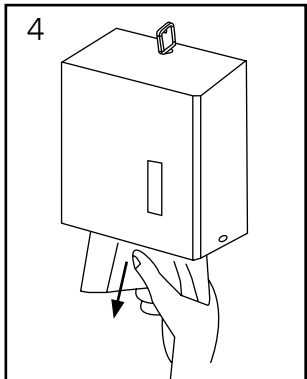


Gehäuse schließen.

Lock the unit.

Verrouiller l'appareil.

Sluit de dispenser.



Spender ist sofort  
betriebsbereit.

The dispenser is immediately  
ready for use.

Le distributeur est prêt à être  
utilisé.

De dispenser is nu klaar voor  
gebruik.

6300100/05.10  
1412567/05.10

Technische Änderungen vorbehalten.  
Technical modifications reserved.  
Modifications techniques réservées.  
Technische wijzigingen voorbehouden.

Ophardt Hygiene-Technik GmbH + Co. KG • Lindenau 27  
47661 Issum • Germany  
Phone +49 28 35 18-0 • Fax +49 28 35 18-77  
Email [info@ophardt.com](mailto:info@ophardt.com) • [www.ophardt.com](http://www.ophardt.com)