

Cafelat Robot guide

Convert a Barista Robot to a Regular Robot

1. Remove the elbow fitting from the pressure gauge by using a 13mm spanner.

Be careful not to let the pressure gauge fall. Always hold the fitting securely and ensure that you do not damage the pressure gauge thread with the spanner. If necessary, use a 2mm Allen key to tighten the pressure gauge..



2. Take out the metal sleeve. Remove the pressure gauge bracket by using a H2 Allen key.



3. Remove the flexible tube from the elbow fitting by pulling the collar of the elbow fitting while simultaneously pulling the tube away from the fitting.

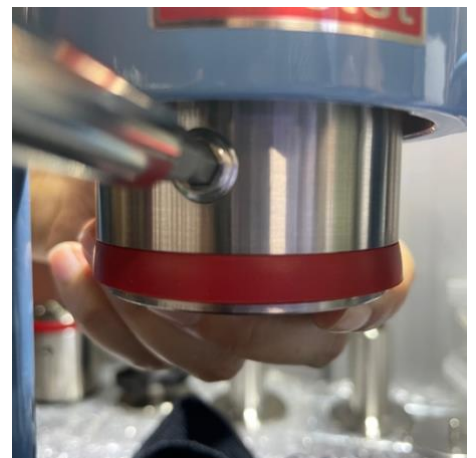


4. Remove the metal sleeve.



5. Remove the piston screw thread using a H5 Allen key. Then carefully remove the piston screw from the back of the robot by carefully pinning it out.

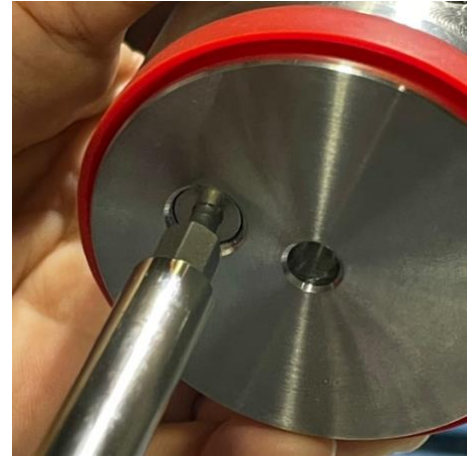
Please note that the robot arms may hit the body during the removal process, so it is important to proceed slowly and with caution."



6. Pull the piston out.



7. Remove the straight fitting by using an H3 Allen key from the piston.



8. Wipe the piston thread hole area clean. Then use an H6 Allen key to install the piston blanking plug and Teflon washer into the piston.



9. Line up the holes in the arm lever and piston. Carefully insert the piston back into place.



10. Insert the screw into the back of the robot. Use an H5 Allen key to tighten the piston screw thread.

