

ZB300BF Series

Plug-In Electronic Product Welding High-End Equipment

# FULLY AUTOMATIC WAVE SOLDERING

Strength Production·Solid Quality·Direct Deal

It can automatically complete the whole welding process of PCB from coating flux, preheating, soldering tin and PCB sending out. It is characterized by high efficiency and high quality.



ZB300BF

浙江华企正邦自动化科技有限公司  
ZHEJIANG HUQI ZHENGBANG AUTOMATION TECHNOLOGY CO., LTD.



# Six Advantages Demonstrating Professionalism With Strength

6 / ADVANTAGES



Zone Heating



Efficient and  
Energy-Saving



Structure Compact



Orbital Transmission



Rapid Heating Up



Automatic  
Synchronization



## (Introduction to Wave Soldering Structure)





# PREHEATING CHARACTERISTICS

Save Labor and Materials, Improve Production  
Efficiency, and Reduce Costs



## MODULAR PREHEATING SYSTEM



Designed With a Drawer Style Structure.  
Easy to Remove for Maintenance and Repair.

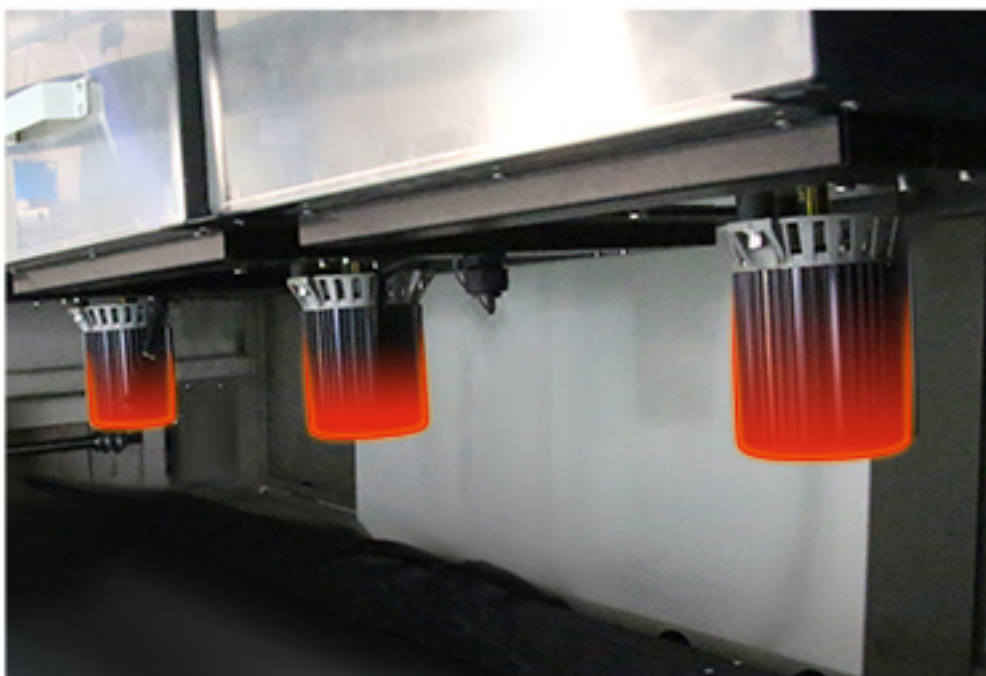




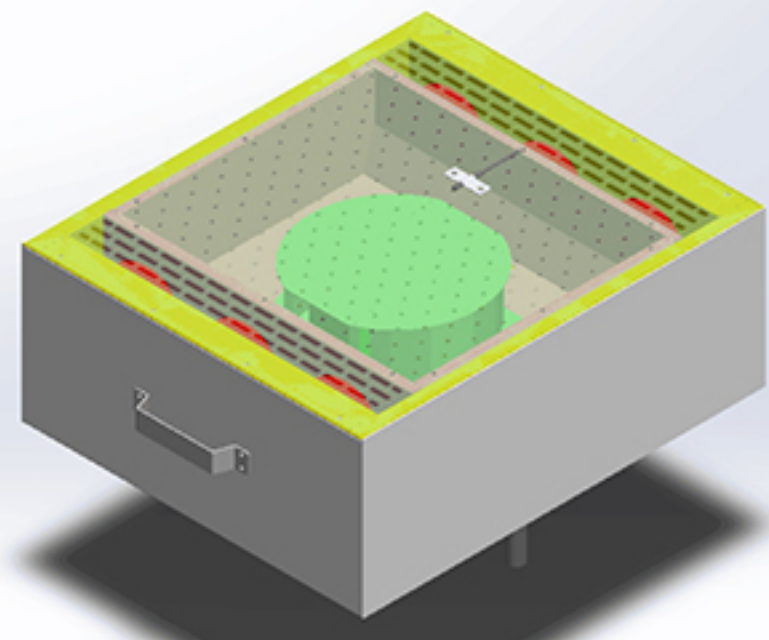
# SUPERCHARGED AIR DUCT PREHEATING

B

New turbocharging technology enhances the efficiency of hot air circulation  
Reduce energy consumption while ensuring more uniform airflow and temperature within the temperature zone



Adopting Sanyue  
High-Temperature Long Axis Fan



Efficient Finned Heating Element



# CHARACTERISTICS OF TIN FURNACE

Adopting cast iron heating plate with three sides surrounding heating, Can start heating in stages, saving energy and reducing consumption.



PRODUCT ADVANTAGES

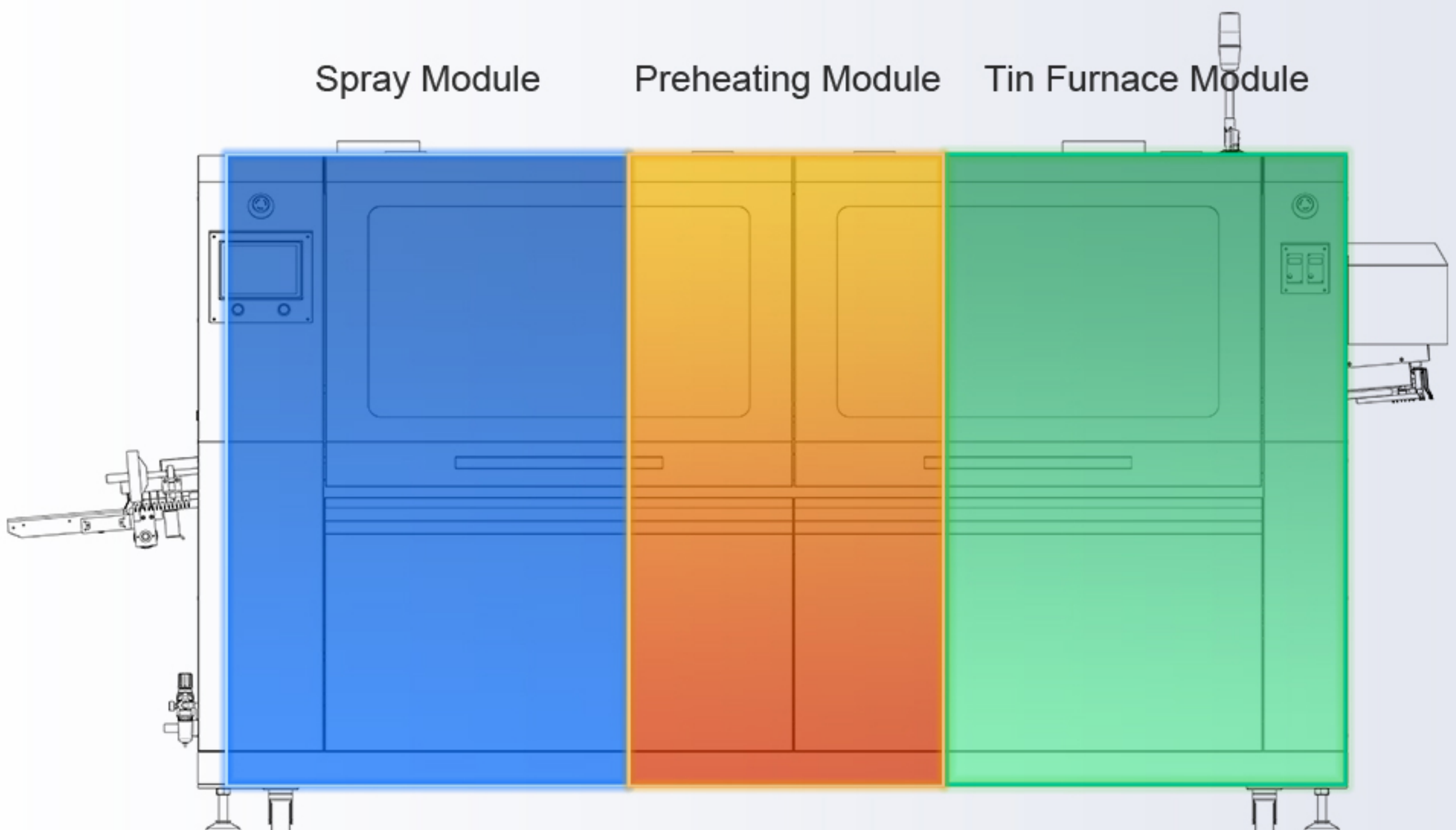


## TIN FURNACE TURBULENCE WAVE AND FLAT WAVE DESIGNED FOR CLOSE RANGE (42MM)

A

Reduce tin usage and welding impact

Oxidation amount of the process

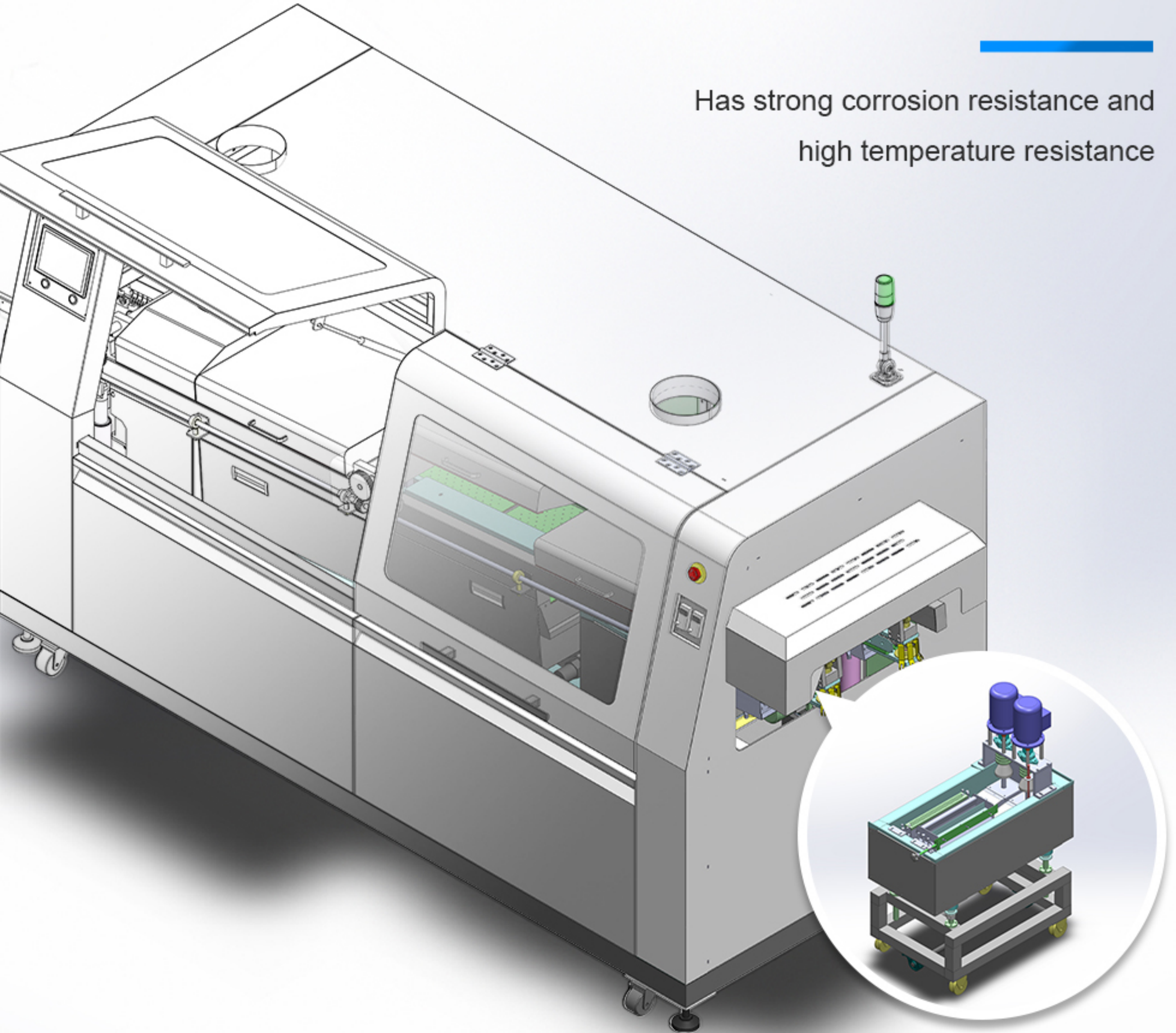




B

# USING 316L STAINLESS STEEL TIN BATH TA1 INDUSTRIAL PURE TITANIUM IMPELLER

Has strong corrosion resistance and  
high temperature resistance





# ADDED ABOVE THE IMPELLER SHAFT ANTI OXIDATION COVER

It can greatly reduce the oxidation of tin.



C



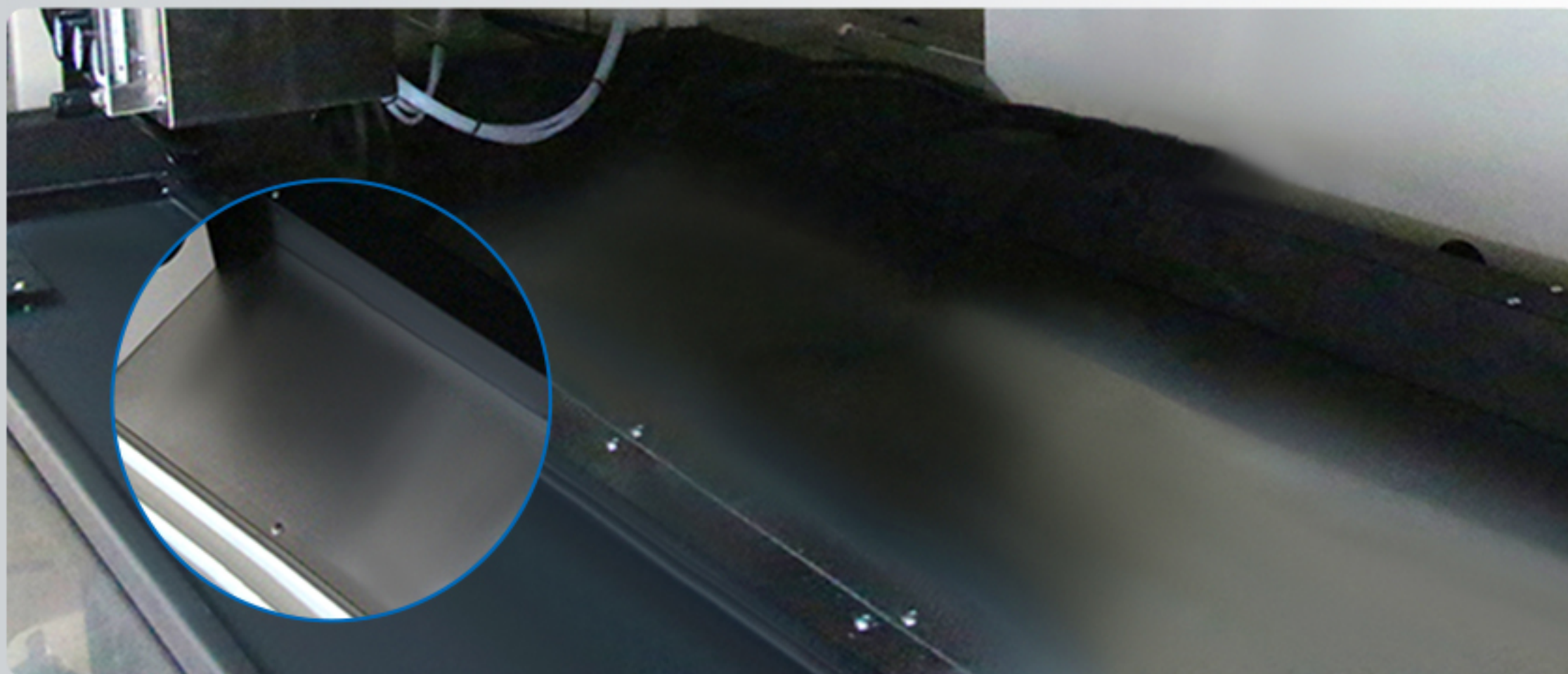


# DETAIL DISPLAY

Humanized Design, More Convenient to Use



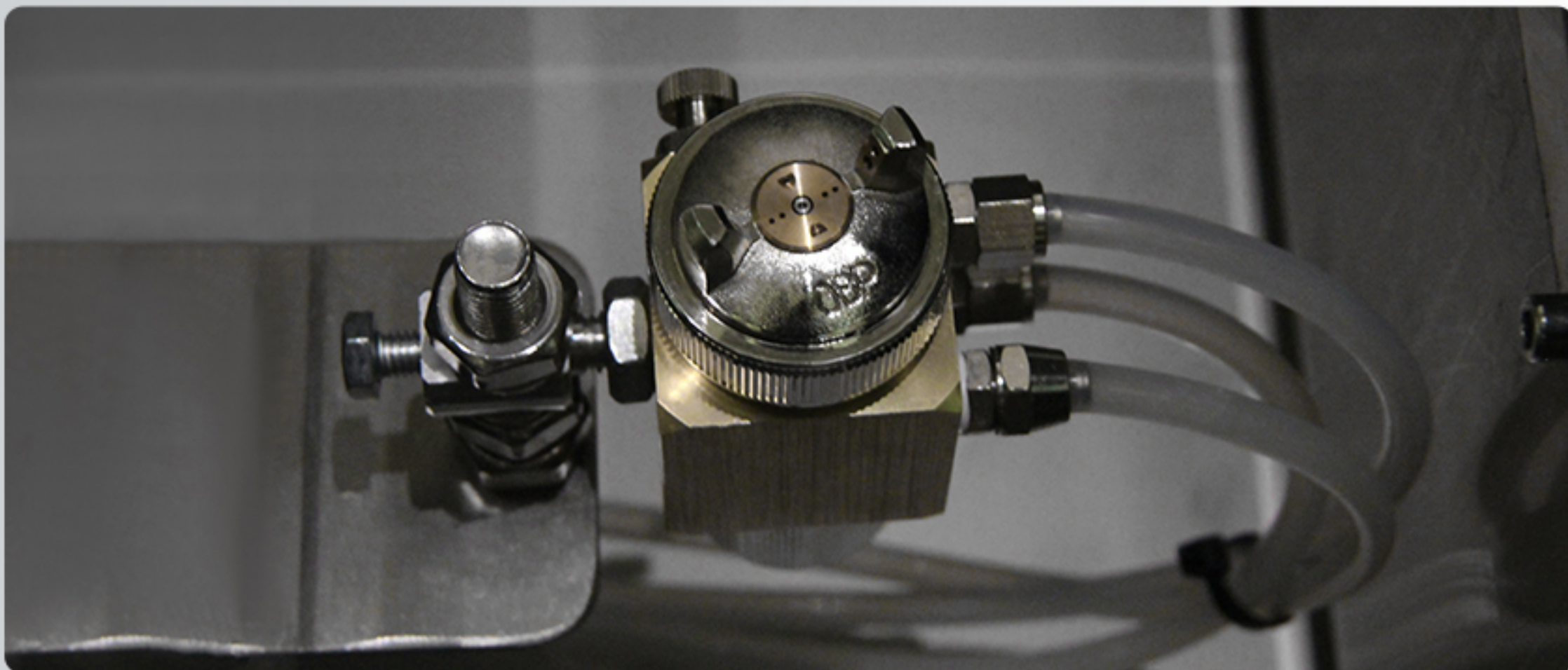
**PRODUCT  
ADVANTAGES**



**STAINLESS STEEL PLATE**

Install anti-corrosion stainless steel plates  
at the bottom of the rack





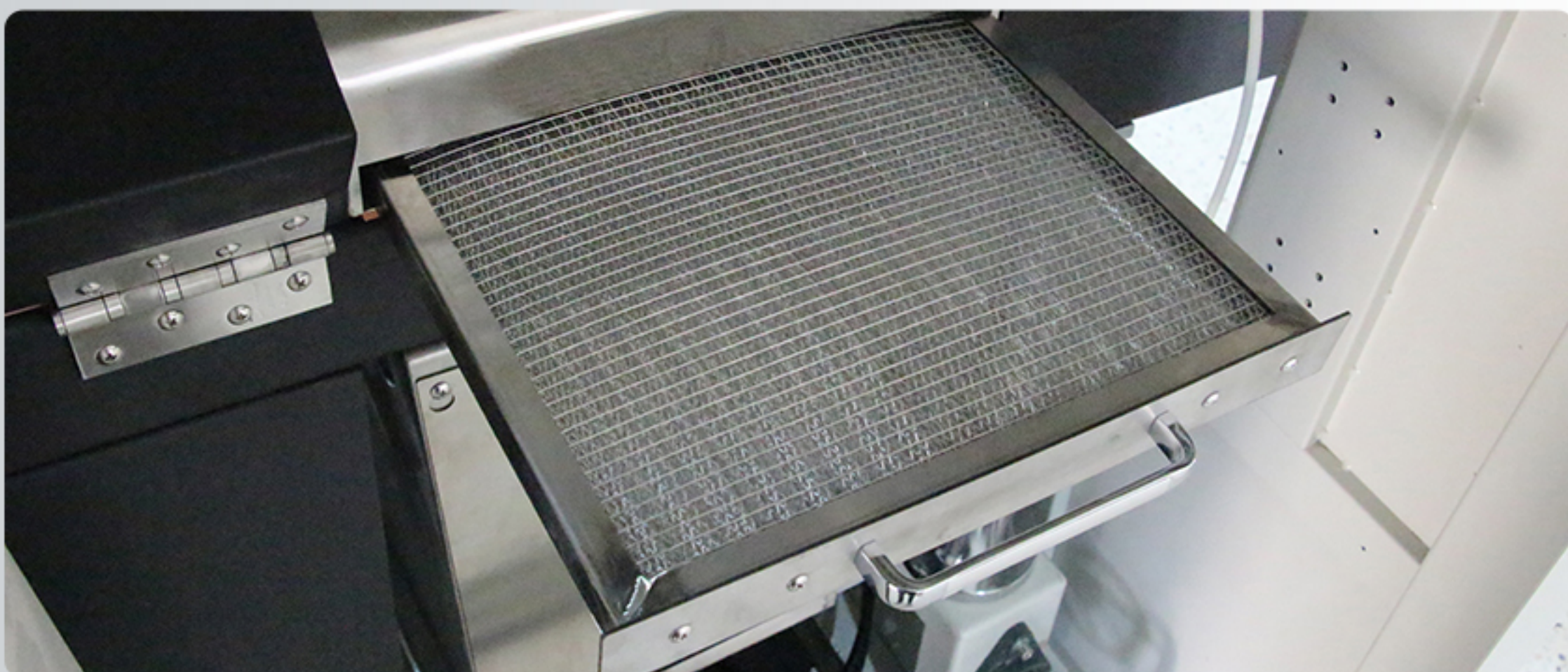
## SPRAYING SYSTEMS

Step motor, linear guide rail and A100 nozzle are used for spray to reciprocate, Automatic induction of spray through photoelectric switch.



## TRANSPARENT GLASS DOOR

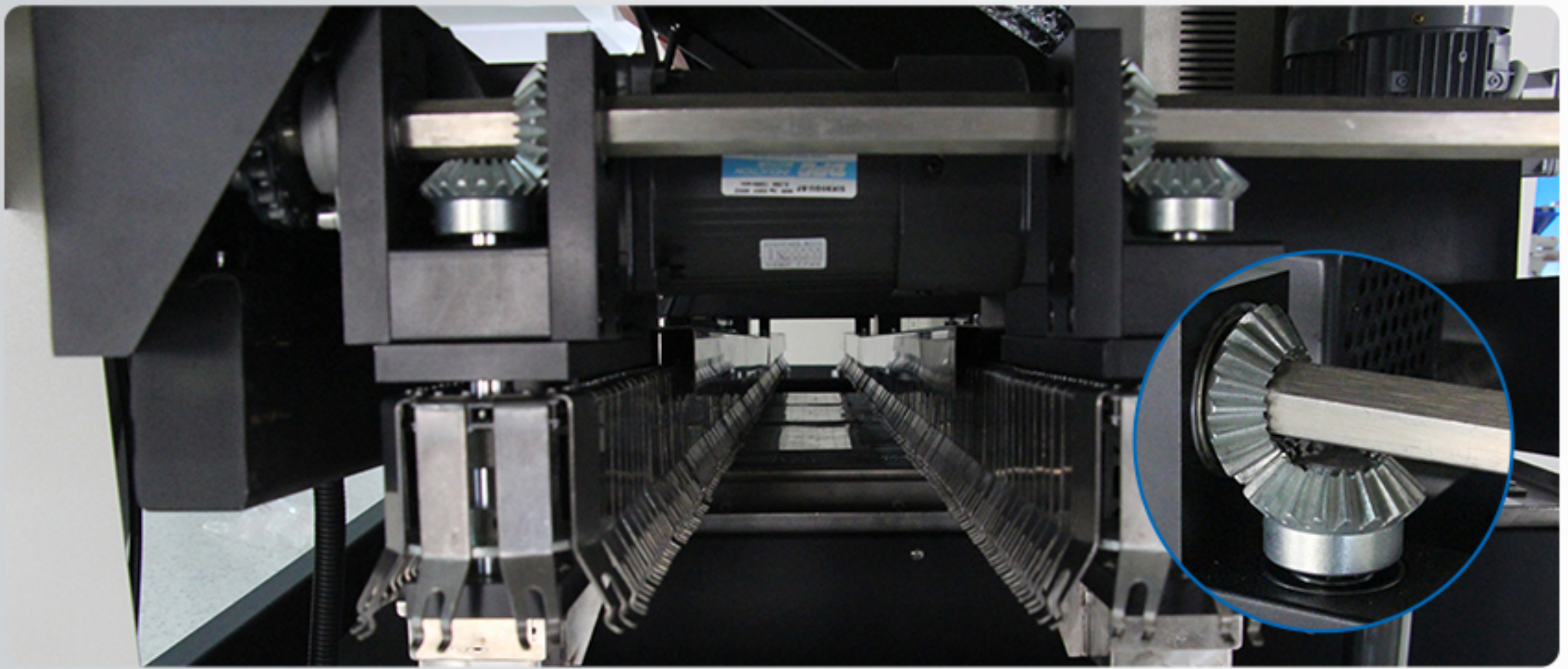
Each door is equipped with a double hydraulic pressure spring cover, Ensure maximum operational and maintenance space.



## EXHAUST SYSTEM

Adopting five layers of stainless steel wire mesh for filtration and adsorption, Maximize the filtration and adsorption of excess flux.





**HIGH PRECISION ADJUSTMENT**

Width adjustment is achieved through three-point synchronous adjustment of helical gears and high-precision trapezoidal screw rods



**CLEANING SYSTEM**

Select high-quality anti-corrosion magnetic pump, Automatically cycle the cleaning of the chain claws by washing the claws on both sides with an anti-corrosion brush.

Lead Containing Process	Lead Free Process	User Set
Preheat 1 SV <input type="text"/> °C	Preheat 1 SV <input type="text"/> °C	Preheat 1 SV <input type="text"/> °C
Preheat 2 SV <input type="text"/> °C	Preheat 2 SV <input type="text"/> °C	Preheat 2 SV <input type="text"/> °C
Preheat 3 SV <input type="text"/> °C	Preheat 3 SV <input type="text"/> °C	Preheat 3 SV <input type="text"/> °C
Solder Pot SV <input type="text"/> °C	Solder Pot SV <input type="text"/> °C	Solder Pot SV <input type="text"/> °C
Transport Speed <input type="text"/> mm/min	Transport Speed <input type="text"/> mm/min	Transport Speed <input type="text"/> mm/min

**Import Process**

**PROGRAM CONFIGURATION**

Free selection of 3 welding processes for easy operation: There are lead processes, elemental lead processes, and custom processes available



# APPLICATION AREA

Unmatched advantages in energy conservation  
Wide range of weldable products



PRODUCT  
ADVANTAGES

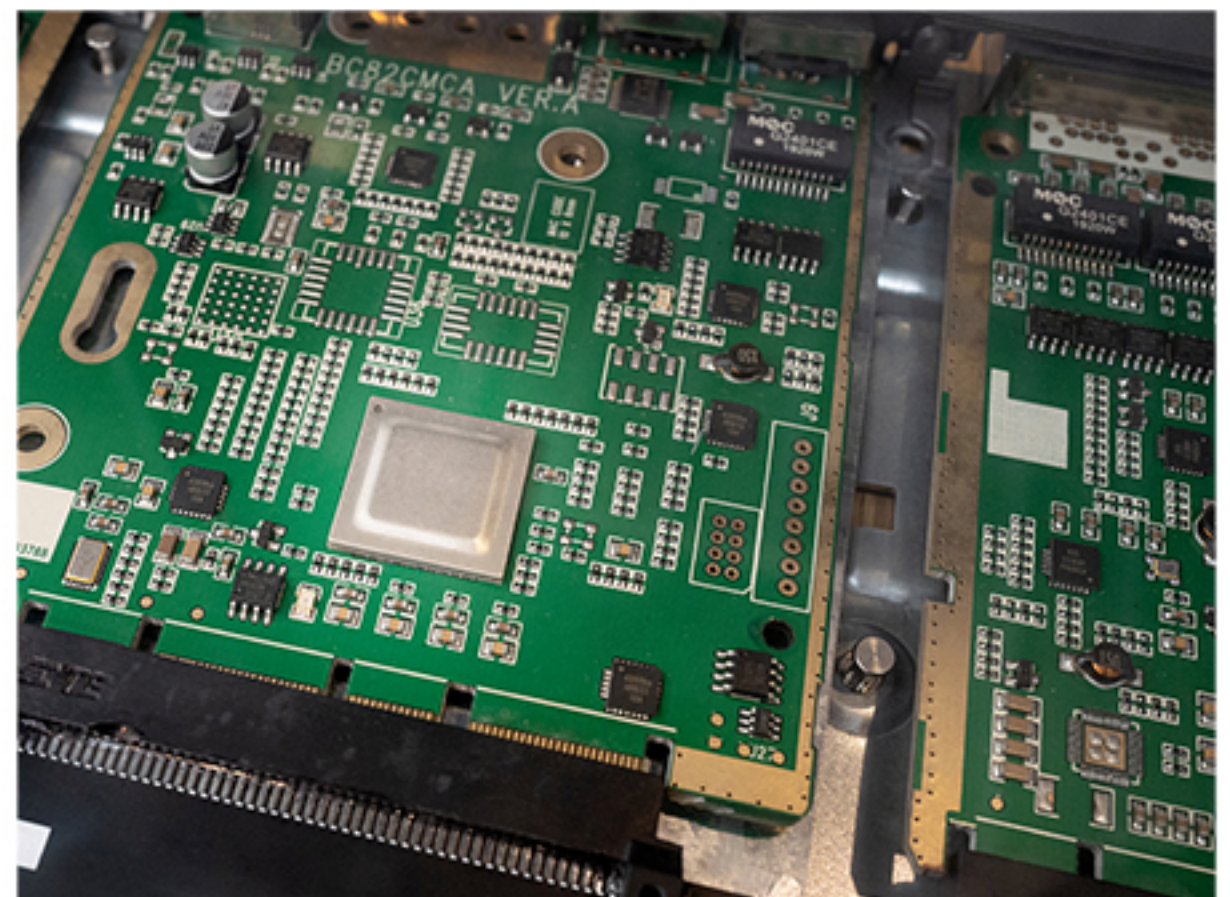


## Electronic Product



Various Cordless Phones, Power Adapters  
Video Phones, Mobile Phones, and Accessories.

## Computer



Motherboard, router, multimedia audio  
Various types of boards, wireless mice, monitors, etc.

## Audio Visual



Decoding board, advanced power amplifier,  
Radio, CD player, MP3 player, satellite TV receiver, etc.

## Household Appliances



Control panel, remote control, visual doorbell for air  
Anti theft door locks, digital cameras, electronic scales,



# TECHNICAL PARAMETER

Plug in electronic product welding  
Professional mechanical equipment



PRODUCT  
ADVANTAGES



## 1. Complete Machine

Model	ZB300BF
Size	L3400*W1240*H1650mm
Weight	900KG
Power Supply	AC380V/50Hz (50A)
Starting Power	23KW
Normal Operating Power	8KW
Control System	Touch Screen
PCB Transport Height	760±20mm

## 2. Spray System

Transmission Mode	Stepper Motor+Digital Driver+Linear Guide Rail
Spray Pressure	0.25MPa-0.4MPa
Nozzle Type	A100-1.0
Flow Control Mode	Flowmeter
Flux Storage Tank	5.5L

## 3. Preheating System

Preheating Mode	Modular full hot air heating
Temperature Control Mode	PID+SSR
Number of Preheating Zones	3
Length of Preheating Zone	1350mm
Adjustable Temperature Range of Preheating Zone	Room temperature -250 °C
Preheating Zone Power	9KW



#### 4. Transportation System

Width of PCB Board	50mm-300mm
PCB Transfer Direction	L→R
Transmission Speed Range	200-2200mm/min
PCB component pin length	<10mm
Speed Control Mode	Touch screen control digital speed regulation
Welding Angle	4-7°
Guide rail width adjustment method	Manual width adjustment

#### 5. Tin Furnace System

Tin furnace type	External heated tin furnace
Tin furnace material	316L Stainless Steel $\delta=4.0\text{mm}$
Tin furnace power	4500W*3=13.5KW
Wave crest type	Double wave (turbulence wave+advection wave)
Wave crest height	0-12mm
Solder temperature	Room temperature -320 °C
Tin furnace capacity	280KG
Tin melting time of tin furnace	70min (Set Temperature 245 °C)
Tin furnace control mode	PID+SSR
Lifting mode of tin furnace	Hand Movement
Access mode of tin furnace	Hand Movement
Tin furnace starts regularly	Yes

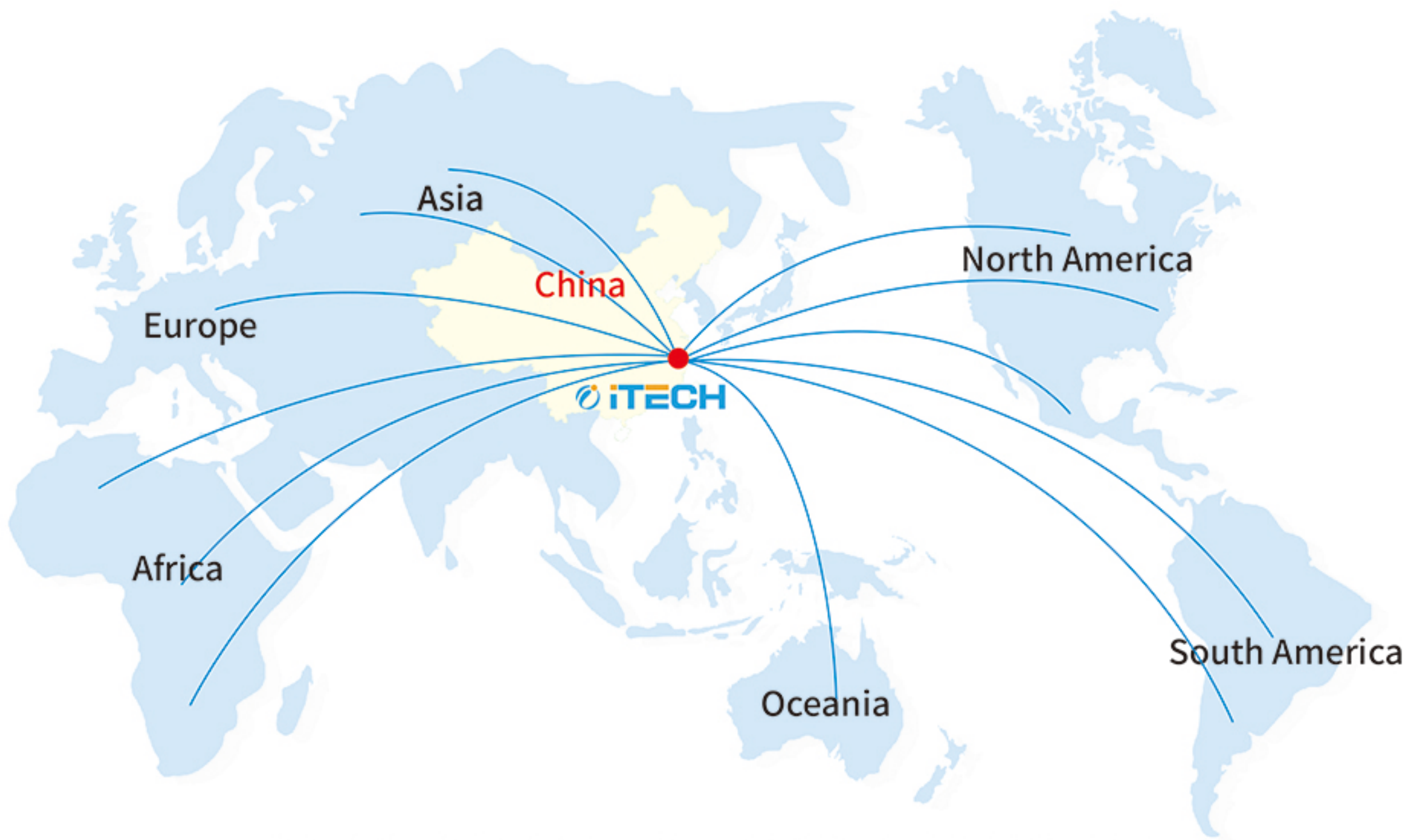
#### 6. Cleaning System

Cleaning Agent	Alcohol
Nozzle alcohol tank capacity	2.4L
Capacity of claw washing alcohol tank	2.4L

#### 7. Cooling System

Cooling Method	Natural Air Cooling
----------------	---------------------





## INTERNATIONAL SERVICE CENTER



Cairo, Egypt



New Delhi, India



Koln, Germany



Madrid, Spain



Kyeongki-Do,  
South Korea



Buenos Aires  
Argentina



Istanbul Turkey



Sao Paulo Brazil



Moscow, Russia



Zhejiang Huaqi Zhengbang Automation Technology Co., Ltd.

No.1, Shanha Road, Nanming Mountain Street, Liandu District, Lishui City, Zhejiang Province, China.

Service Call: 0086-577-86701181

Fax : 0086-577-85398666

Website : [www.itechsmt.com](http://www.itechsmt.com)