

ANTI-STATIC

PCB TURNOVER CAR

Stable Anti-Static Index · Adjustable Buckle Adjustment · Precise Slot Position · Non-Standard Customization



Anti-Static



Customizable



Carrying Capacity



PRODUCT DISPLAY

PRECISE SLOT POSITION

Exquisite Workmanship, Precise Slot Position
and Smooth Plate Placement



EXPONENTIAL STABILITY

Strict Quality Control, Stable anti-Static Detection Index



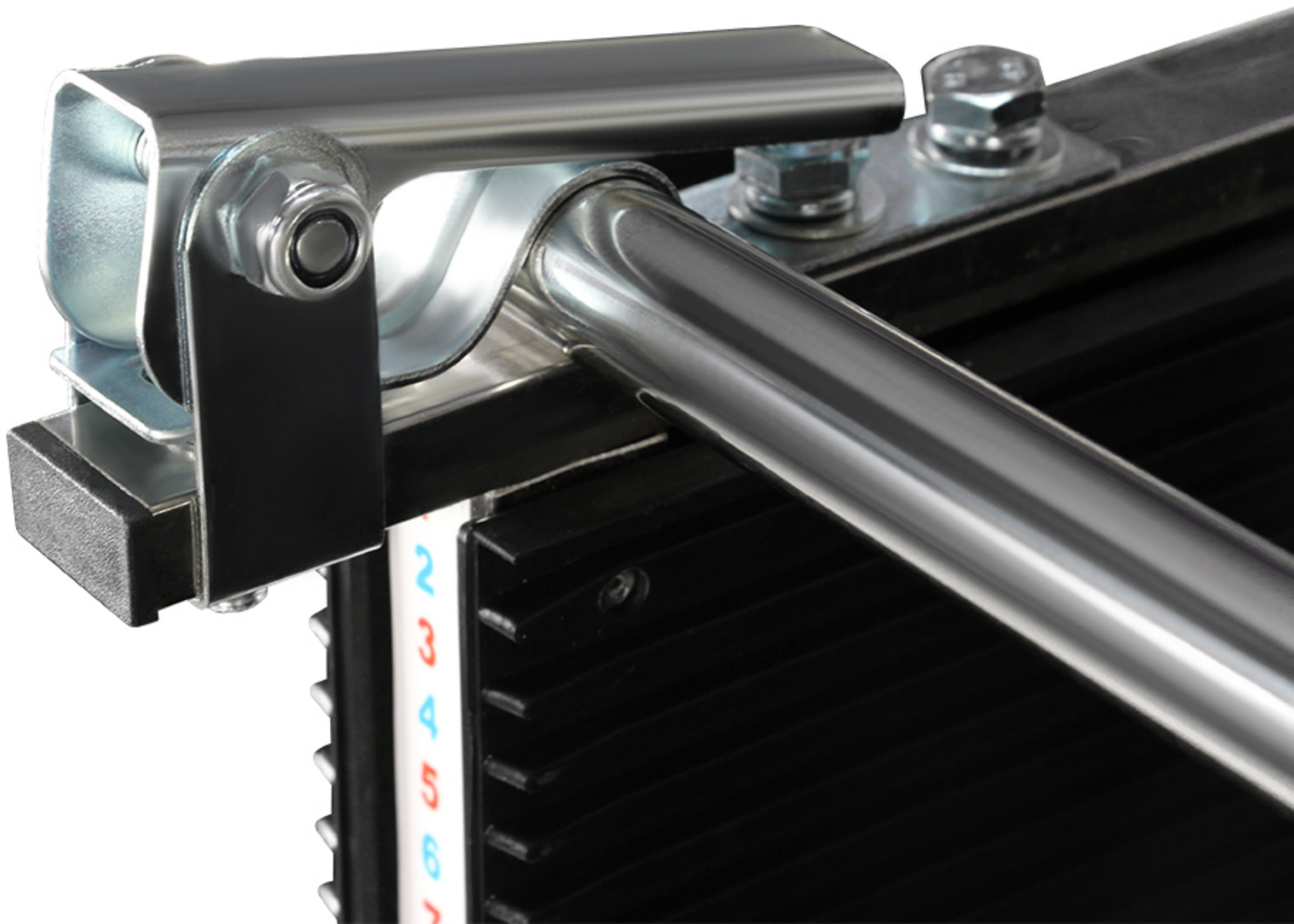
METAL GROUNDING CHAIN

The metal chain is grounded to effectively release metal static electricity



FREE ADJUSTMENT

Movable buckle, which can be adjusted freely with PCB size



FULL SCALE WELDING

The fish scale pattern is fully welded and durable



UNIVERSAL **MOVABLE WHEEL**

Universal silent movable wheel, easy to move without noise



STRUCTURAL PARAMETERS



SOURCE MANUFACTURER NON-STANDARD CUSTOMIZATION

(The existing common sizes are as follows. If you need other sizes, please contact customer service for customization)





Product Name: Anti-Static Turnover Vehicle

Dimensions: 900* 55 * 126CM

Groove Plate Size: W:35CM * H:100CM (Customizable)

Groove Width: 5MM **Groove Depth:** 5MM **Layer Spacing/slot Spacing:** 5MM

Castor Size: 4-Inch Wheel

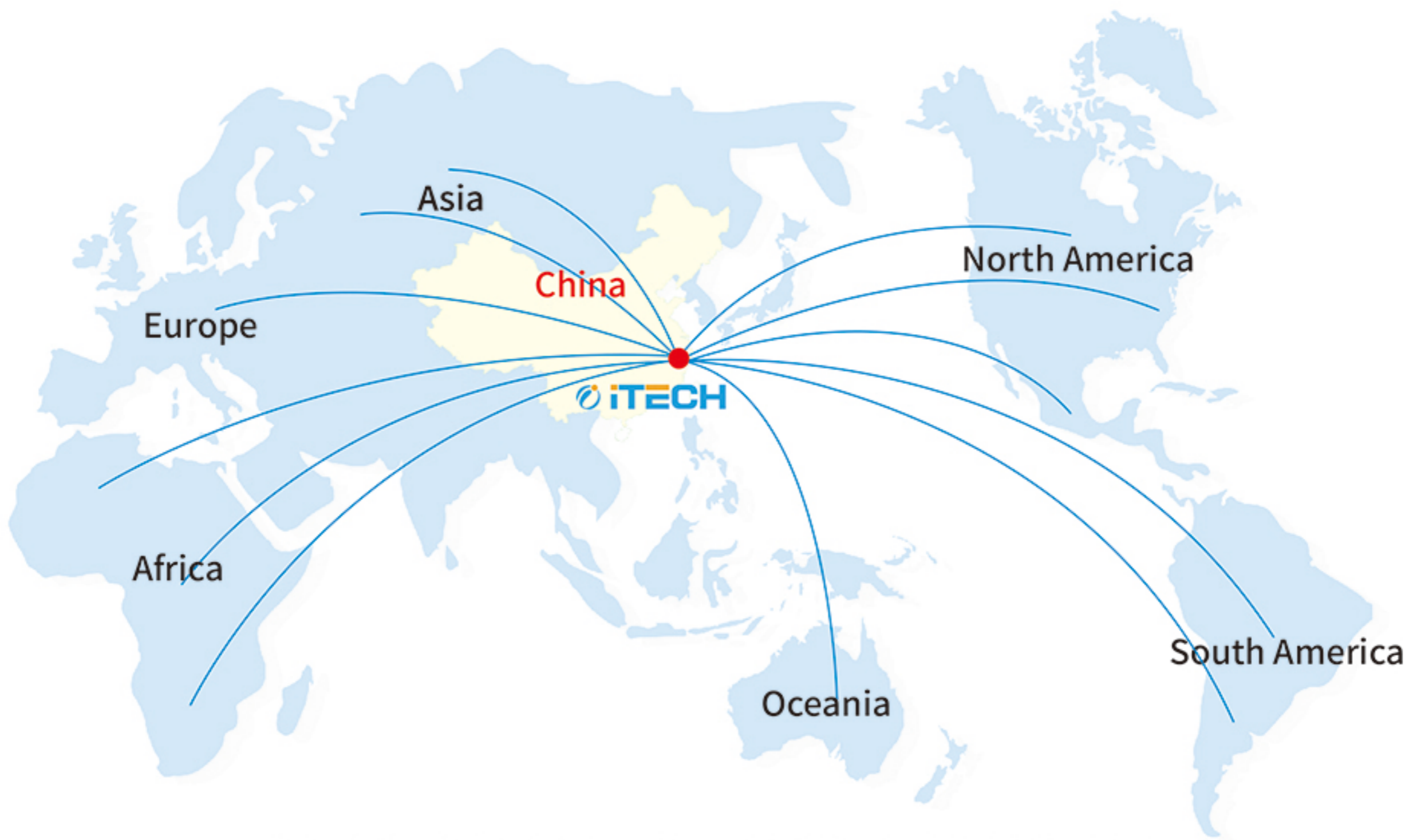
Product Resistance: $10^6 - 10^9 \Omega$

Bearing Weight: 200KG

Material Thickness: 1.0MM \pm 8c

Product Material: 201 Stainless Steel, PP Plate

Number of Storage Layers: 100



INTERNATIONAL SERVICE CENTER



Cairo, Egypt



New Delhi, India



Koln, Germany



Madrid, Spain



Kyeongki-Do,
South Korea



Buenos Aires
Argentina



Istanbul Turkey



Sao Paulo Brazil



Moscow, Russia



Zhejiang Huaqi Zhengbang Automation Technology Co., Ltd.

No.1, Shanha Road, Nanming Mountain Street, Liandu District, Lishui City, Zhejiang Province, China.

Service Call: 0086-577-86701181

Fax : 0086-577-85398666

Website : www.itechsmt.com