

**Product information**

**pH ORP**  
**- hand-held instrument**  
**SL-pH-GL**  
**- full set SL-pH Set**



- Water-proof and shock resistant instrument
- Water-proof pH electrode and temperature probe
- Buffer solution in dosage bottles (pH 4, pH 7, pH 10)
- Software for operation, configuration, data read-out, etc.
- USB adapter
- High-class case
- Calibration certificate
- Gratis calibration after 1 year with automatic recall from calibration laboratory

**Characteristic**

The SL-pH measures pH values, ORP, temperature and rH.

The devices feature min-/max- value memory, HOLD, auto range, logger function with cyclic recording (10 000 data sets) or single values (1 000 data sets), analog output and a large illuminated 4 1/2 - digit display.

The device can be optimally adjusted to the specific application via a menu-based configuration. For the calibration one can select between automatic and manual calibration (1-, 2-, and 3- point calibration). Standard or DIN buffers can be chosen for automatic calibration.

The housing, connectors and probes are water-proof.

**Specifications**

**Instrument SL-pH**

**Measuring range**

- pH : -2.000..+16.000 pH
- ORP / mV : -2000.0..+2000.0 mV
- Temperature : -5.0..+150.0 °C / 23.0..302.0 °F
- rH : 0.0..70.0 rH

**Accuracy**

- pH : ±0.005 pH
- ORP / mV : ±0.05 % FS (mV or mV<sub>H</sub>)
- Temperature : ±0.2 °C (in range of -5.0..100.0 °C)
- rH : ±0.1 rH



**Connections**

- pH / ORP : BNC socket, compatible to standard and water-proof BNC plugs, additional banana socket (4 mm) for separate reference electrode, input resistance: 10<sup>12</sup> Ohm
- Temperature : 2 banana sockets (4 mm) for temperature probe (Pt1000 or NTC10k)
- Interface / supply : 4-pole bayonet socket for serial interface and supply

**Display**

- : two 4 1/2 - digit 7-segment displays (15 mm and 12 mm)

**pH calibration**

- perm. electrode specifications : asymmetry: ±55 mV  
 slope: -62..-45 mV/pH  
 Buffer is automatically detected. Temperature dependency is automatically compensated. Status rating of pH electrode at calibration. 1-, 2- or 3-point calibration with characteristic curve kink for GHM standard buffers or buffer acc. to DIN19266 or manual buffer input.

**ORP measurement**

- : 2 choices:  
 „mV“ standard ORP or mV measurement  
 „mV<sub>H</sub>“ conversion to hydrogen system acc. to DIN38404 part 6

**rH measurement**

- : Using a ORP measurement and input of pH value the rH value is calculated.

**Protection class**

- : IP67 (housing and connection)

**Housing**

- : material made of shock-resistant ABS w/ support, incl. silicone protection cover

**Supply**

- : 2 x AAA battery (incl. in scope of supply) current consumption <1.0 mA

**Battery operation**

- : approx. 1000 hours

**Dimensions**

- : 160 x 86 x 37 mm (H x W x D)

**Weight**

- : 250 g incl. battery

continued on next page

**Product information**

**Functions**

- **Min- / max- value memory**  
Highest and lowest value are saved
- **Hold / Auto-Hold**  
Automatic measured value stability detection
- **Automatic-Off function**  
Device gets automatically turned off after selected time. (0..120 min., or deactivated)
- **Status rating for pH electrode and battery**  
Bargraph display, battery change indicator "BAT" display
- **Background illumination**  
Duration selectable (on / off or 5 s ... 2 min)
- **Automatic temperature compensation**
- **Selectable calibration intervals (GLP)**
- **Calibration storage (GLP)**  
Latest 16 calibrations are stored.
- **Serial interface**  
Connection: 4-pole bayonet socket
- **Analog output**  
0..1 V freely scalable, connection: 4-pole bayonet socket  
Resolution: 13 bit, accuracy: ±0.05 % at nominal temp.
- **Data logger**  
With measuring point input, recoding interval: 1 s to 1 h  
Recording duration: 416 days at interval 1 h, measuring value memory: cyclic: 10 000 data sets, single: 1000 data sets
- **Real time clock**
- **Min- / max- alarm**  
Continuous monitoring of alarm boundaries,  
3 alarm conditions:  
- off: alarm function inactive  
- on: alarm notification via display, integrated buzzer, interface  
- no Sound: alarm notification via display and interface

**pH electrode and temperature probe SE100**

A high-class, robust and water-proof pH electrode with integrated Pt1000 temperature sensor is included to the measuring set.



**Specifications:**

- Measuring range
- pH : 0..14 pH
  - Temperature : -5..+80 °C
  - Shaft : diameter 12 mm  
length 120 mm
  - Reference system : Ag/AgCl
  - Reference electrolyte : Gel (KCl), low-maintenance, not refillable
  - Temperature probe : Pt1000
  - Connection : 1 m fixed cable with BNC plug and banana plug

**Buffer solution SPHL**

- Buffer solution for calibration of pH electrodes
- SPL 4:** pH 4 (red) : pH 4.01 (25 °C) ±0.015
  - SPL 7:** pH 7 (green) : pH 7.00 (25 °C) ±0.015
  - SPL 10:** pH 10 (blue) : pH 10.01 (25 °C) ±0.030



Buffer solutions, each in 250 ml dosage bottles.  
 Dosage volumes 20 ml and 25 ml.

**Deionized water SDW500**

Deionized water for cleansing of electrodes after / during calibration or after soiling.  
 Water in 500 ml dosage bottles. Guarantee seal 28 mm, dosage volume 20 ml and 25 ml.



**KCL electrolyte SKCL**

100 ml KCL electrolyte (3mol) for refilling of protection cap for pH electrode.



**Case SKK 2019**

High-quality case made of robust PP incl. rigid foam inlay with cut-outs for equipment.

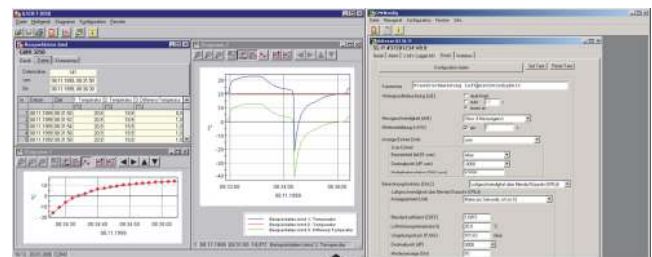


Dimensions : 450 x 360 x 140 mm (H x W x D)

**Manufacturer's calibration WSP3 / WSP10**

- Calibration certificate
- WSP3** : included to set and as voucher  
3 test values  
~4.00 pH, ~6.87 pH, ~9.18 pH
  - WSP10** : optionally upon surcharge  
10 test values  
from ~1.09 pH till ~12.75 pH

**Software GSOF 3050 and GMHKonfig**



**GSOF 3050**

The software allows operation of the logger function of hand-held measuring devices. The logger recording can be started and stopped and the logger data can be read-out and visualized. The multilingual software is executable with Windows 98, Me, NT, 2000, XP, Vista and 7.

The data is read-out via USB interface of a PC by means or an USB adapter and cable (included).

- Display of status information
- Setting of alarm function
- Operation of logger function
- Diagram display of logger data
- Logger data print-out
- Save logger data
- Export of logger data to ASCII (text, usable for MS Excel®)
- Memorizing of window settings
- Display of calibration history (GLP)

**GMHKonfig**

The software GMHKonfig allows the configuration of hand-held measuring instruments. It automatically detects the connected device type and provides the corresponding functions.

- Device configuration
- Set logger IDs
- Initialization of menu parameters
- etc.

## Product information

### Adapter and cable SL-USB

Electrically isolated interface converter with power supply via USB incl. connection for analog output.



### Consumables

SE100	: pH electrode with temperature probe
SPHL4	: buffer solution pH 4, 250 ml
SPHL7	: buffer solution pH 7, 250 ml
SPHL10	: buffer solution pH 10, 250 ml
SDW500	: deionized water, 500 ml
SKCL	: KCl electrolyte, 100 ml
WSP3	: calibration certificate, 3 test values
WSP10	: calibration certificate, 10 test values

Other set parts upon request.

### Scope of supply SL-pH-GL

#### Device bulk:

- SL-pH (pH / ORP hand-held measuring device),
- Operating manual,
- Short manual,
- Battery 2 x AAA

### Scope of supply SL-pH Set

#### Set:

- SL-pH (pH / ORP hand-held measuring device),
- SE100 (pH electrode with integrated Pt1000 temperature probe),
- SKK 2019 (case incl. inlay),
- SL-USB (adapter and cable),
- Flash drive with GSOFT 3050 (software),
- SPHL (buffer solution pH 4, pH 7, pH 10; each 250 ml),
- SKCL (KCl electrolyte; 100 ml),
- SDW500 (deionized water),
- WSP3 (calibration certificate),
- Voucher for 1x WSP3,
- Operating manual,
- Short manual,
- Battery 2 x AAA

### Product key

**SL-pH-GL (device bulk)**

**SL-pH-Set**

### Accessories

#### GEH 1

Electrode holder  
suitable for electrodes with plastic handle

