

# Beck.

## The factory-set pressure switches.



# Pressure switch 901

with factory-set pressure setting

## Application

Factory-set pressure switch monitoring overpressure, vacuum or differential pressure of liquid and gaseous – also aggressive – media.

Pressure setting and switching differential are factory-set by the manufacturer.

## Temperature range

Ambient temperature from  $-20^{\circ}\text{C}$  to  $85^{\circ}\text{C}$ .  
Temperature of media up to  $85^{\circ}\text{C}$  or  $130^{\circ}\text{C}$  depending on material of pressure connection and diaphragm.

## Diaphragm material

Depending on media NBR, Silicone, FKM (Viton®), EPDM.  
For 901.30 Silicone, others upon request.

## Electrical rating

Values indicated for resistive load

AgNi-contacts: 6 (1.5) A/250 VAC  
2 A/24 VDC

Gold-plated contacts: 100 mA/24 VAC  
30 mA/24 VDC

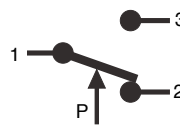
AgNi-contacts up to 10 A/250 VAC can be supplied upon request.

## Electrical connection

AMP connection 6.3 mm x 0.8 mm DIN 46244.

## Arrangement of contacts

for 901.1x, 901.30,  
901.41, 901.51



only for 901.2x



## CE Conformity

each depending on technical specification: Low Voltage Directive 2006/95/EC; RoHS Directive 2011/65/EC; ATEX Directive 94/9/EC; Product types tested by TUV.

## Life

Minimum  $10^6$  cycles.

## Damping

Restrictors alternatively with 0.3/0.5/0.8 mm diameter.

## Accessories

Various mounting brackets and protection caps with IP 44, IP 54 and IP 65.

## Mounting position

Mounting in any position, to be specified for settings below 100 mbar.

## Pressure connection

Type	Tube connection			Threaded connection			
	5.0 mm	6.5 mm	10.0 mm	M10 x1	G1/8	G1/4	G1/2
901.1x	PA	PA, PPS	PA, PPS	PA, PVDF CuZn40, V <sub>2</sub> A	PA, PVDF CuZn40, V <sub>2</sub> A	PVDF CuZn40, V <sub>2</sub> A	CuZn40
901.2x	PA	PA, PPS	PA, PPS	PA, PVDF CuZn40, V <sub>2</sub> A	PA, PVDF CuZn40, V <sub>2</sub> A	CuZn40, V <sub>2</sub> A	CuZn40
901.30		PA					
901.41		PA, PPS	PA, PPS	PA, PVDF CuZn40, V <sub>2</sub> A	PA, PVDF CuZn40, V <sub>2</sub> A	CuZn40, V <sub>2</sub> A	CuZn40
901.51				CuZn40	CuZn40, V <sub>2</sub> A	CuZn40, V <sub>2</sub> A	

PA = polyamide, PVDF = polyvinylidene fluoride, PPS = polyphenylsulfide, CuZn40 = brass, V<sub>2</sub>A = stainless steel

For temperature above  $85^{\circ}\text{C}$  metal or PPS pressure connection is required. Upon request pressure connections of other sizes, other plastics or brass nickel-plated are available.

Viton® is a registered trademark of DuPont Dow Elastomers.



### Overpressure range

Type	Factory-set trip pressure		Standard switching differential		Tolerance band in % of trip pressure	Maximum positive working pressure standard/ extended	Maximum negative working pressure standard/ extended
	between	and	lower end of range	upper end of range			
901.1x	5 mbar	200 mbar	2.5 mbar	50 mbar	±10 %	0.5/4 bar	-/-1 bar
	200 mbar	1.000 mbar	50 mbar	150 mbar	±10 %	1/4 bar	-/-1 bar
901.41	500 mbar	3.000 mbar	200 mbar	600 mbar	±10 %	10 bar	-1 bar
901.51	1.0 bar	12 bar	0.2 bar	1.5 bar	±10 %	25 bar	-1 bar

### Vacuum range

Type	Factory-set trip pressure		Standard switching differential		Tolerance band in % of trip pressure	Maximum positive working pressure standard/ extended	Maximum negative working pressure standard/ extended
	between	and	lower end of range	upper end of range			
901.2x	- 5 mbar	- 200 mbar	2.5 mbar	50 mbar	±10 %	0.5/4 bar	-1 bar
	- 200 mbar	- 900 mbar	50 mbar	150 mbar	±10 %	1/4 bar	-1 bar

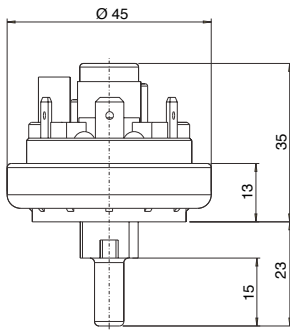
### Differential pressure range

Type	Factory-set trip pressure		Standard switching differential		Tolerance band in % of trip pressure	Maximum positive working pressure standard/ extended	Maximum negative working pressure standard/ extended
	between	and	lower end of range	upper end of range			
901.30	5 mbar	50 mbar	2.5 mbar	25 mbar	±10 %	100 mbar	-100 mbar

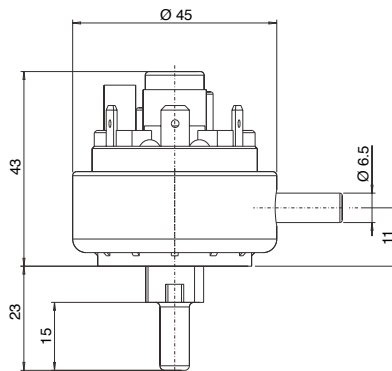
# Pressure switch 901

with factory-set pressure setting

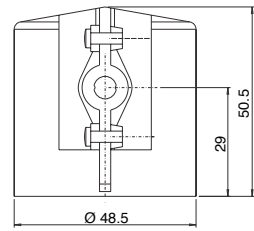
**901.10/20**



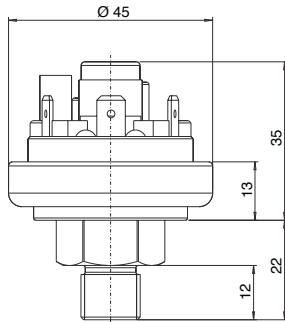
**901.30**



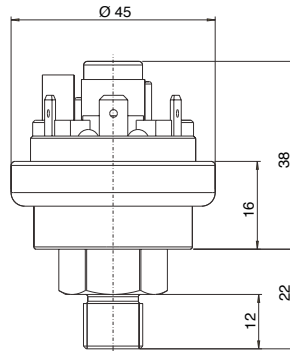
**Protection caps  
6329 IP 44**



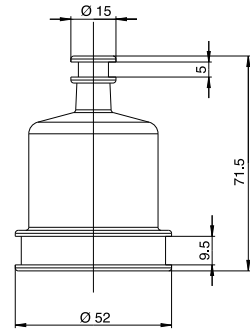
**901.11/21/41**



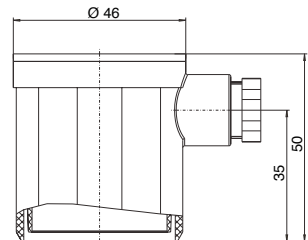
**901.51**



**6345 IP 54**



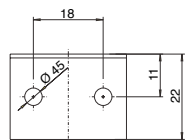
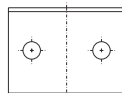
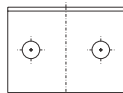
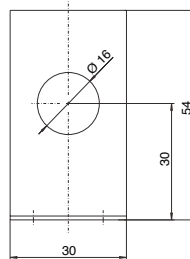
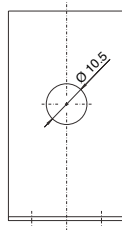
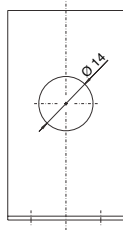
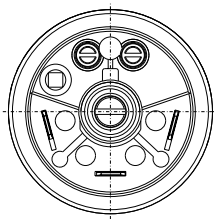
**6371 IP 54 / 6372 IP 65**



**Mounting brackets  
6403**

**6404**

**6405**



**6374 IP 54 / 6375 IP 65**

