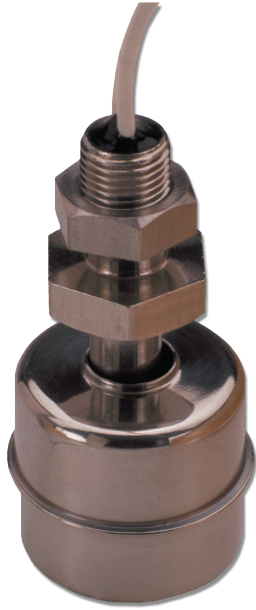


[RFS-2] Top Entry Level Switch



Material	
Stem	SUS304(316)
Float	SUS304(316)
Stopper	SUS304(316)
Nut	SUS304(316)

Specification		
Temperature Range (Atm. Pressure)	-40°C ~ +120°C	
Pressure Resistance (Room Temp.)	1MPa	
Specific Gravity of the liquid	Heavier than 0.8	
Electric Specs.	Max. Contact Capacity	50W DC/AC
	Max. Voltage	300V DC/AC
	Max. Current	0.5A DC/AC

Dimension

