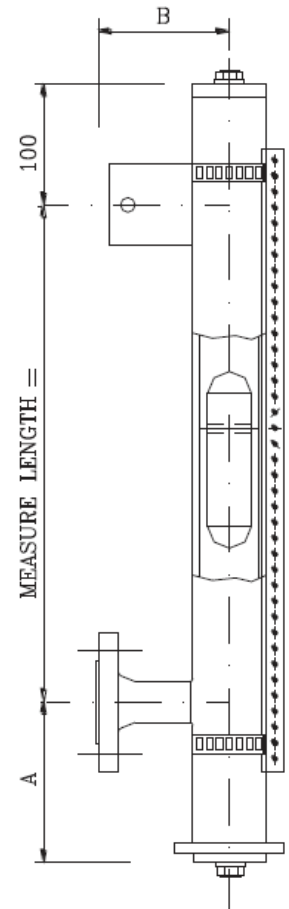


[Pointer L10-70]

Magnetic Level Gauge

(Max pressure 10 bar, 70lbs)

TECHNICAL SPECIFICATIONS	
Model	L-10 / L-70
Material	Stainless steel 316L (1.4404)
Pipe	60.3 x 2 mm
Pressure	Max. 10 bar / 70 lbs
Temperature Max.	Max. 160 °C
C. to C.	Max. 5500 mm (for longer C. to C. see pointer D-16)
Indication rail	Polycarbonate (max. temp. 105 °C, temporary 120 °C) Aluminium with SS316 flaps Stainless steel 316
Process connection	DIN DN 15 – DN 32 / PN 16 B = 75 mm ANSI ½" – 1¼" 150# RF B = 85 mm Weld or thread (Male / Female) ½" – 1" B = 75 mm DN 40 – DN 50 and ANSI 1.1/2" – 2" on 1" pipe B = 130 mm
Drain	¼", ½" or ¾" plug BSP or NPT ¼", ½" or ¾" with ballvalve
Drain gasket	EPDM, NBR, FPM
Vent	¼", ½" or ¾" plug BSP or NPT G 2" stop
Float	From density min. 380 kg/m3
Drain length	Density min. 940 kg/m3 A = 200 mm (*) Density min. 830 kg/m3 A = 235 mm (*) Density min. 720 kg/m3 A = 285 mm (*) Density min. 660 kg/m3 A = 340 mm (*)
Extra support	C. to C. > 3 meter for offshore C. to C. > 4 meter for onshore
Pointers	High & Low in stainless steel
Marking	Tag plate acc. to standard lay-out PED marking till mod. III std.
Certificates	Material EN 10204 3.1 + drawing Pressure test acc. HADRO standard GL, LRS or BV certificate
Special	Electrical tracing



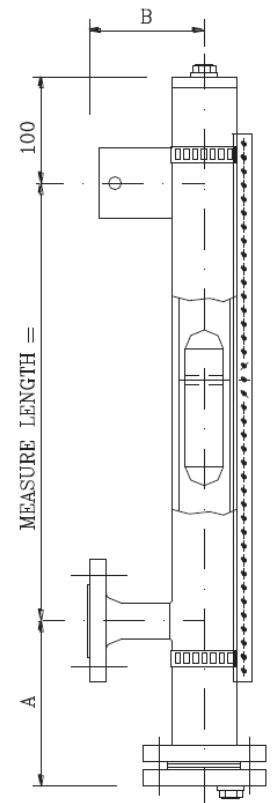
(*) special (shorter) drain length available on request

[Pointer L16-150]

Magnetic Level Gauge

(Max pressure 16 bar, 150lbs)

TECHNICAL SPECIFICATIONS	
Model	L-16 / L-150
Material	Stainless steel 316L (1.4404), Stainless steel 304, PP, PVC, PVDF, Monel, Titanium, Hastelloy
Pipe	60.3 x 2 mm
Pressure	Max. 16 bar / 150 lbs
Temperature Max.	Max. 400 °C
C. to C.	Till 5500 mm in 1 piece, longer out more pieces
Indication rail	Polycarbonate (max. temp. 105 °C, temporary 120 °C) Aluminium with SS316 flaps Stainless steel 316
Process connection	DIN DN 15 – DN 32 / PN 16 B = 75 mm ANSI ½" – 1¼" 150# RF B = 85 mm Weld or thread (Male / Female) ½" – 1" B = 75 mm DN 40 – DN 50 and ANSI 1.1/2" – 2" on 1" pipe B = 130 mm
Drain	¼", ½" or ¾" plug or valve BSP or NPT Side entry as above
Drain gasket	PTFE, Aramide, Graphite, spiral wound
Vent	¼", ½" or ¾" plug BSP or NPT Flange DN 25 / PN 16 (as drain)
Float	From density min. 380 kg/m ³
Drain length	Density min. 940 kg/m ³ A = 210 mm (*) Density min. 830 kg/m ³ A = 245 mm (*) Density min. 720 kg/m ³ A = 295 mm (*) Density min. 660 kg/m ³ A = 350 mm (*)
Extra support	C. to C. > 3 meter for offshore C. to C. > 4 meter for onshore
Pointers	High & Low in stainless steel
Marking	Tag plate acc. to standard lay-out PED marking till mod. III std.
Certificates	Material EN 10204 3.1 + drawing Pressure test acc. HADRO standard GL, LRS or BV certificate NACE MR 01.75 / ISO 15156 II 1/2G c IIC T1... T6 II 1 D Txx °C KEMA 10ATEX0199 X
Special	Insulation, steamjacket, spring, electrical tracing



Pointer L

(*) special (shorter) drain length available on request