



## SOLIBA PRA

### ROTARY BLADE LEVEL INDICATORS

#### For grain silos, cereals, animal feeds

SOLIBA PRP rotary vane detectors are used to detect a high or low level of bulk products in silos, hoppers and containers.

The detection palette is rotated by a motor. When the pallet is covered with product, the rotation is stopped, the signal is cut and the engine stops. When the level of bulk products decreases, the pallet is released, the signal is restored and the engine restarts.

Available are different vanes and process connections according to each product and tank size.

#### Operation mode **by rotation**

Important specification Only in non ATEX area

Measuring blade speed 1rpm

Electric characteristics 230 VCA 50/60 Hz  
Option :24VCA/VDC

Cut-out power 15 A

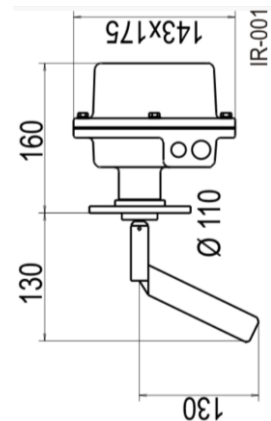
Maximum temperature -20 - + 70°C

Protection index IP 65 -

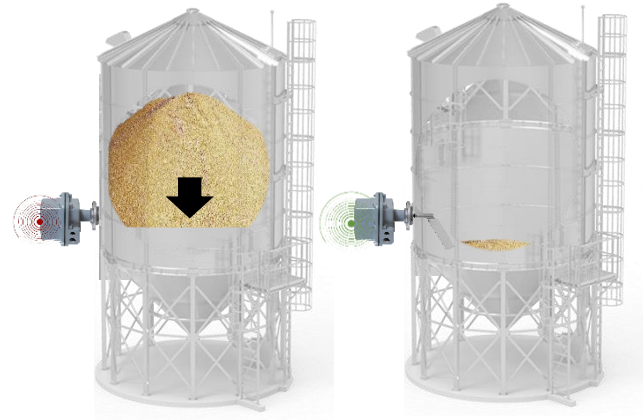
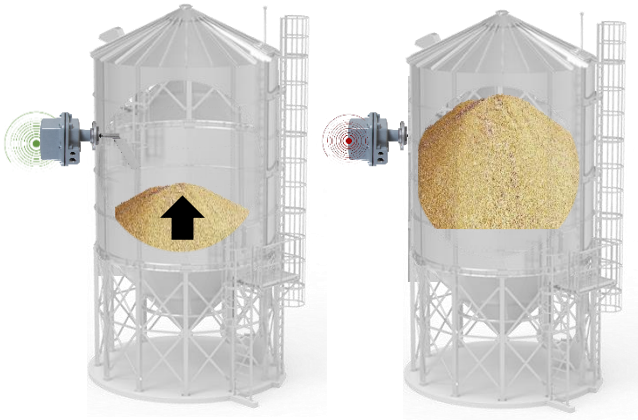
Vanes Inoxidable AISI 304 o 316

Body Aluminium

Float weight without cable 2,5 kg



**Dimension**

**FILLING - HIGH level****EMPTYING - LOW level**

When the vanes is covered with product, the rotation is stopped, the detector stops filling the silo

When the silo is empty, the solid releases the vanes and informs that the silo is empty for filling



**IMPORTANT!** The SOLIBA PRP can also be used as an intermediate level to detect a given level. For the low level, we recommend using aluminum flange connection for better durability over time.