



Fixcab

SOLIBA Msmall

MEMBRANE LEVEL DETECTOR

For grain silos, cereals, animal feeds

SOLIBA Msmall allow economic level monitoring of bulk goods in small storage vessels.

They may be used to indicate full and empty states and load demand for dusty, powdery, granulated and grainy bulk goods.

They are suitable for use with bulk materials (0.3 to 2.5 t/m³) and particle sizes up to 30 mm.

The operation of the detector is very reliable. Only such materials exert sufficient operating pressure on the detector to allow the tilting of the contact..

Operation mode By push

Important specification Only in non ATEX area

Electric characteristics 250 VCA 50/60 Hz

Cut-out power 16 A

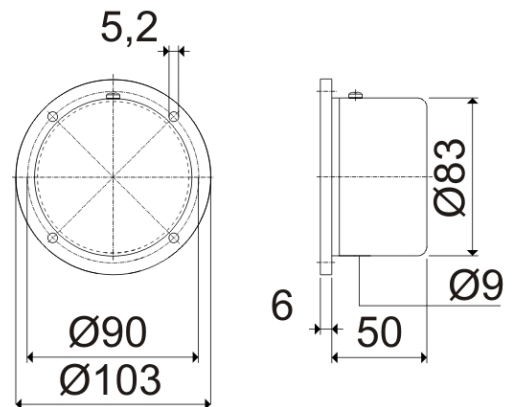
Maximum temperature -10 - + 60°C

Protection index IP 40 - 53

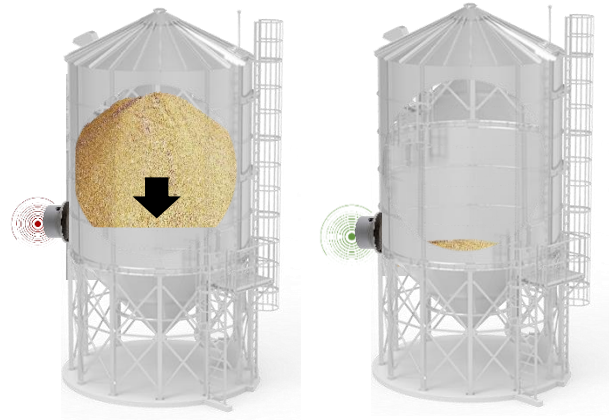
Membrane NBR

**Corps
Body
Cuerpo** ABS

Float weight without cable 200 g



Dimension

FILLING – HIGH level**EMPTYING - LOW level**

When the silo fills up, the material exerts a pressure on the membrane of the level detector and stop the filling of the silo

When the silo is empty, the solid releases the membrane and informs that the silo is empty for filling



IMPORTANT! The SOLIBA Msmall can also be used as an intermediate level to detect a given level. For the low level, we recommend using a viton membrane for better durability over time.