



Me and My Sister Designs

Materials

1 Spring Fling Panel #22040-11	
Large Floral #22041	1 fat quarter
Dragonfly #22047	1 fat quarter
Flower Medallions # 22042	1 fat quarter
Turquoise Dots #22044-13	1 yard
Purple Bouquet for binding #22043-15	1/2 yard
Backing	2 yards
Batting scraps for behind flowers	
Colorful buttons	
Embroidery floss	
Heat sensitive crystals and tool	
Fabric adhesive spray	

Yardage is based on 40 - inch wide fabric

Cutting

Quilt Base

Trim *Spring Fling* panel to measure
23 x 44 - inches

Border

From turquoise dot for border:
Cut 5, 5 1/2 x 40 - inch strips

Binding

From purple for binding:
Cut 5, 2 1/4 - inch strips

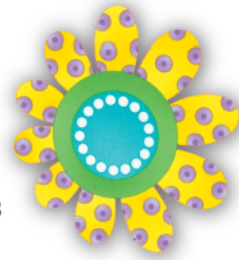
Flowers

*rough cut flowers and medallions at least
1/4" to 1/2" beyond shapes

From large floral:
Cut 4, large flowers

From dragonfly:
Cut 6, small flowers

From flower medallion:
Cut 3, medallions



Quilt Assembly

Use 1/4 - inch seam allowance throughout

Border

- Piece 5, 5 1/2 x 40 - inch turquoise dot border strips end to end.
- From pieced length cut:
2, 5 1/2 x 44 - inch lengths and attach to the sides of the panel.
- From pieced length cut:
2, 5 1/2 x 33 - inch lengths and attach to the top and bottom of the panel.

Finishing

- Layer, baste, hand or machine quilt, trim, and add binding.

Flowers

1. Spray the wrong side of each flower with fabric adhesive spray.

Finishing

2. Place flowers sticky side down onto a batting scrap ...be sure batting extends beyond flower edges.
3. Fussy cut around flower edges.
4. Spray batting side of flowers with additional fabric adhesive and arrange on the quilt top.
5. Stitch around all flowers and medallions up to a ¼ inch in from the edge to raw edge appliqué.
6. Embellish flower centers with buttons sewn on with brightly colored embroidery floss.
7. Attach heat sensitive crystals per manufacturers guidelines to flower centers and petals.



33 x 54 inches