



Brio®



amphora

**Tankless Ultrafiltration  
System with Faucet**

Setup Manual

Model No.: UF100FBLK

# Table of Contents

<b>Safety Information</b> .....	<b>3</b>
<b>Intended Use</b> .....	<b>3</b>
<b>Package Contents</b> .....	<b>4</b>
<b>Materials Needed</b> .....	<b>4</b>
<b>Installation Overview</b> .....	<b>5</b>
<b>Installation</b> .....	<b>5</b>
Connect to the Cold Water Supply .....	6
Install the Faucet .....	7
<b>Operation</b> .....	<b>7</b>
Startup and Flushing of Water .....	8
<b>Maintenance</b> .....	<b>8</b>
Filter Specifications .....	8
Replacing the Filter .....	8
Routine Maintenance .....	8
Care and Cleaning .....	9
<b>Troubleshooting</b> .....	<b>9</b>
<b>Specifications</b> .....	<b>9</b>
<b>Warranty</b> .....	<b>10</b>

# Safety Information

**WARNING:** To reduce risk of injury and property damage, you must read this entire manual before assembling, installing, and operating the filtration system.

**WARNING:** In order to ensure safety and to avoid injury and property loss to you and others, please be sure to follow the following safety precautions. Misuse of filtration system or ignoring safety precautions may lead to accidents.

Installation needs to comply with state and local laws and regulations.

- System must be installed indoors and away from possible environmental damage.
- Do not place heavy objects on top of the product.
- Do not place flammable, volatile substances near the product.
- Do not place the product near a heat source or open fire.
- Please install the product as close as possible to the floor drain.
- Do not allow children to operate, touch, approach, or climb on the product without guardians present.
- Strong magnetic devices nearby may cause fire, product damage, or circuit failure. Wet and dusty areas may cause circuit damage.
- The product must be installed or moved by professional personnel. Disassembling at your own discretion may damage the product.
- When the water does not meet the municipal water standards (including high sediment content and excessive residual chlorine, etc.), a professional installer must install a pretreatment device before installing the faucet.
- The optimal water pressure of this product is 0.1-0.4 MPa. If the water pressure is lower or higher than this, install a pressure-boosting or pressure-reducing device accordingly.
- In case of product failure, disconnect it from its water source and contact customer service.
- When the ambient temperature is low, the flow rate will decrease, which is an inherent feature of the filter.
- Replace the filter regularly.
- It is normal for the product to have slight vibration and noise when processing water.
- If you do not use this product for a long period of time, shut off the feed water adapter. Upon first use after an extended period of time, run water for 3-5 minutes.

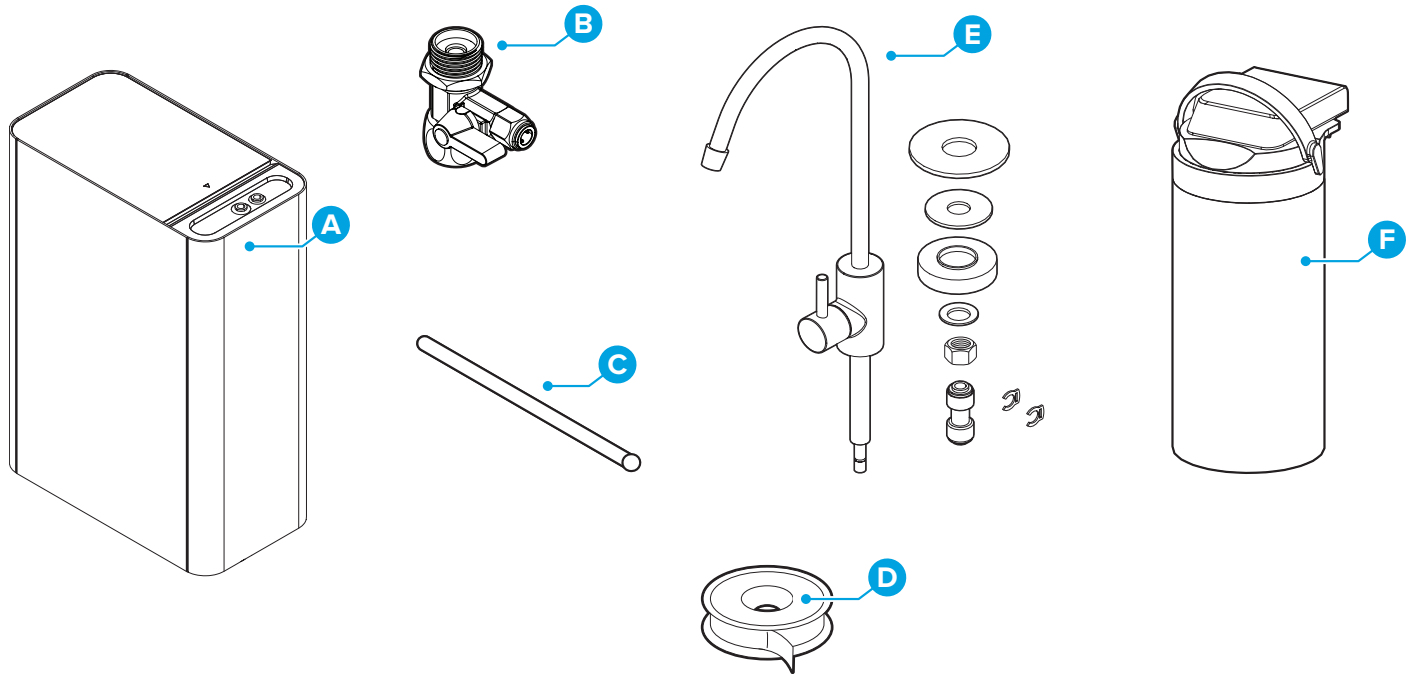
## Intended Use

This filtration system is intended to be used in household and similar applications such as:

- Staff kitchen areas in shops, offices, and other working environments
- Farm houses

- Hotels and other hospitality venues
- Catering events and similar non-retail applications

## Package Contents

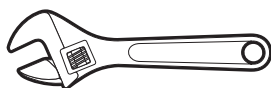


Part	Description
A	Filtration engine
B	Feed water adapter with extra nut
C	White tubing
D	Plumber's tape
E	Faucet with hardware

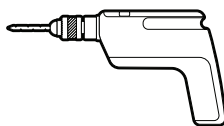
Part	Description
F	All-in-one filter (preinstalled)

## Materials Needed

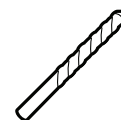
Adjustable Wrench



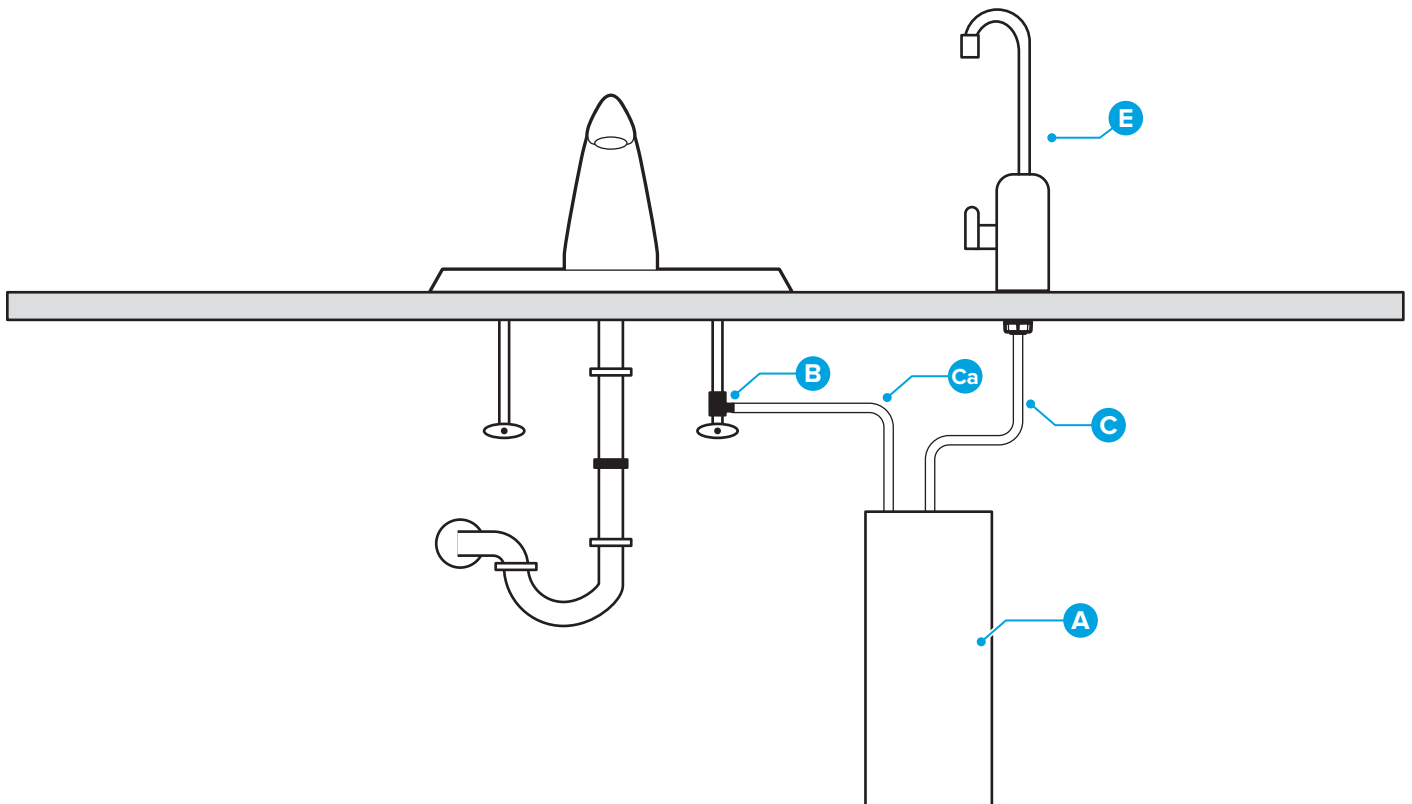
Power Drill



1/2" Drill Bit (For Faucet)



# Installation Overview



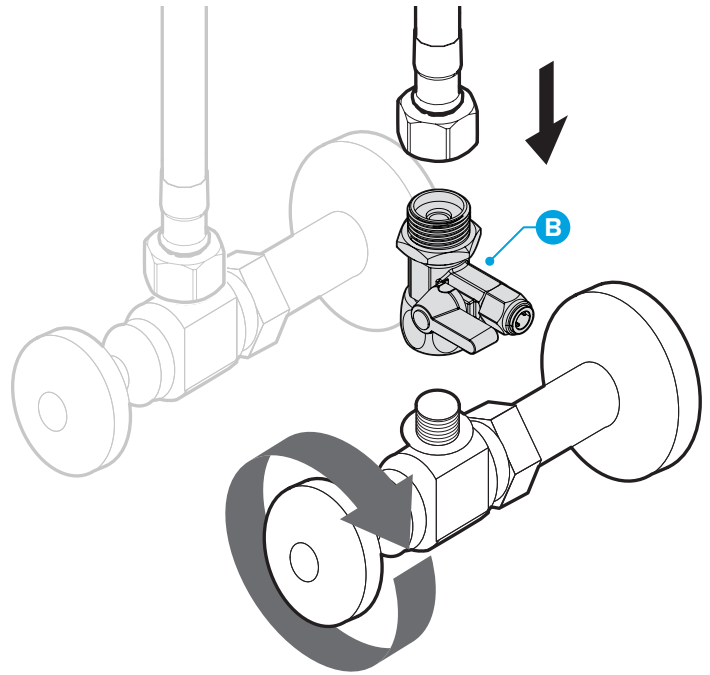
## Installation

### 1. Connect to the Cold Water Supply

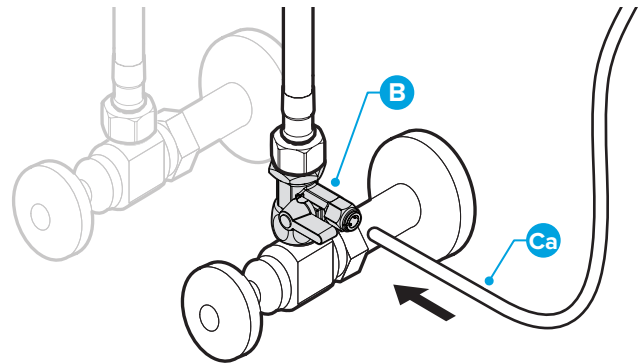
**CAUTION:** DO NOT CONNECT THIS WATER LINE TO A HOT WATER SUPPLY LINE. The water supply to the unit MUST be from the COLD WATER LINE. Using HOT WATER will severely damage your filters.

- A. Turn off and then disconnect the current cold water supply line.
- B. Connect the feed water adapter (B) to the cold water supply line.
- C. Twist the cold water supply line clockwise on top of the feed water adapter (B) until it is securely connected.

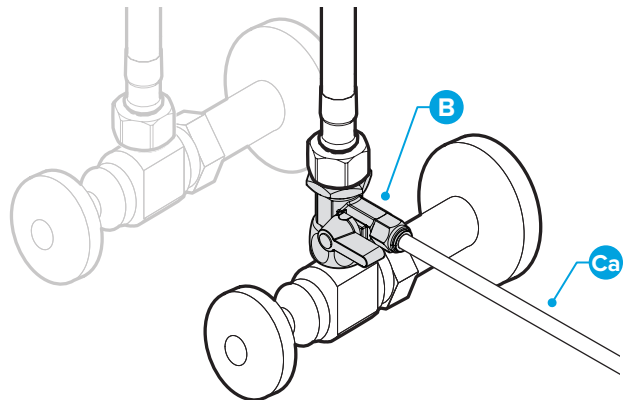
**NOTE:** An extra adapter nut is included on top of the feed water adapter (B) to attach to a 3/8 in. or 1/2 in. feed plumbing line.



- D. Insert the white feed water tube (Ca) straight into the quick connector piece of the feed water adapter (B). Tighten the nut.



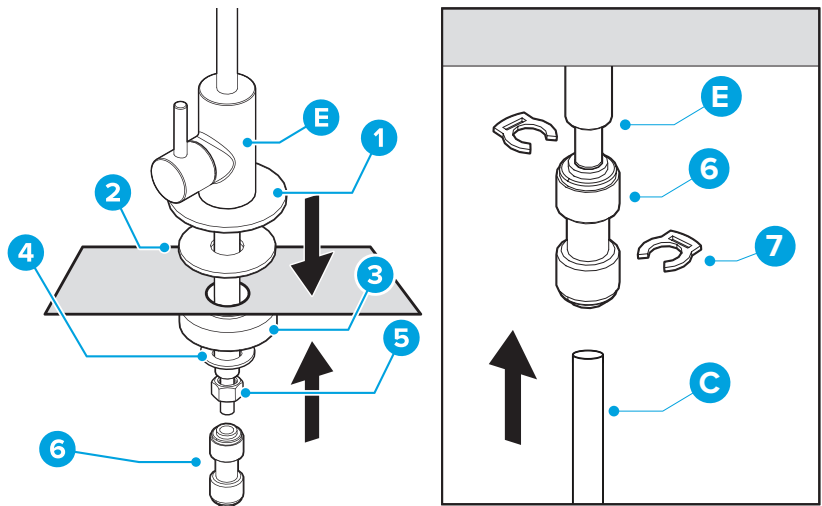
- E. Gently tug on the tube (Ca) to ensure a secure connection with the feed water adapter (B).



## 2. Install the Faucet

**IMPORTANT:** If your sink does not have a second faucet hole, please contact a licensed professional to create one. Do NOT attempt to drill a faucet hole yourself as this may damage the sink.

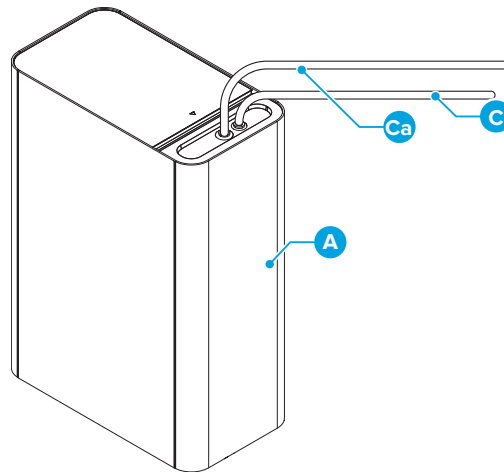
- A. Slide the steel plate (1) and the washer (2) up the faucet stem as illustrated. Then insert the faucet stem into the hole in the counter, positioning the faucet body (E) on top of the counter.
- B. From underneath the sink, slide the plastic washer (3) up the faucet stem, followed by the steel washer (4). Twist the lock nut (5) up the stem, securing the faucet (E) and all the washers in place.
- C. From underneath the sink, slide the quick connector (6) up the faucet stem and secure in place using the clips (7).



**IMPORTANT:** Connect the white faucet tube (C) to the quick connector (6).

## 3. Make the Connections

- A. Connect the two tubes to the engine (A).



## Operation

### Startup and Flushing of Water

Flush the filter in the engine (A) upon first use and each time you change the filter.

1. Open the feed water adapter (B).
2. Flush the system by opening the faucet handle until the stored water is completely emptied and the flow is reduced to a trickle (about 1-5 minutes).
3. Close the faucet handle and allow the system to fill again.
4. Repeat steps 3-4 two more times (about 4-6 hours). (Occasionally check for leaks during this time.)
5. Check for leaks daily during the first week of use and periodically thereafter.

**NOTE:** You may notice that the water has a milky color during the first week. This is an indication of air bubbles in the water. This is normal during this period and the water is safe to drink.

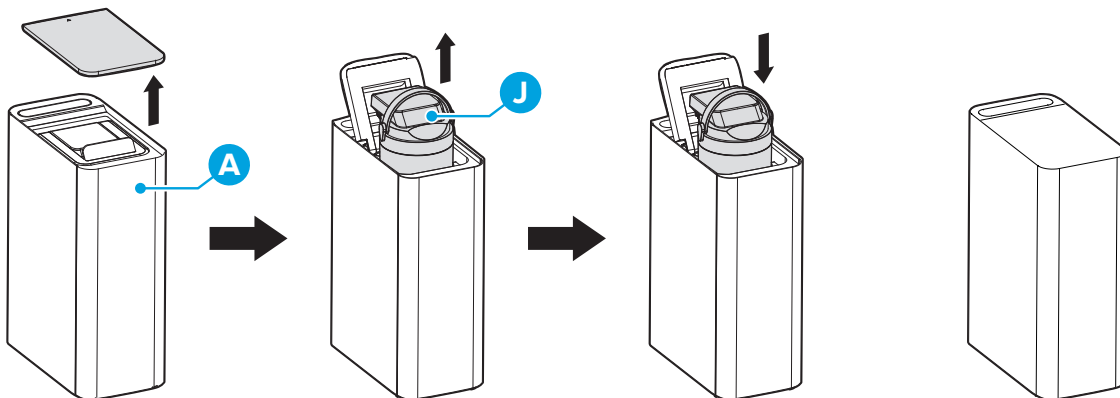
## Maintenance

### Filter Specifications

Filter Name	Filter Layer	Function	Suggested Lifespan
Integral Composite Filter	Polypropylene	Filters mud, sand, rust, suspended solids, and other large-grained substances.	12-24 months
	Carbon fiber	Filters organic compounds, remaining chlorine, and odor.	
	Ultrafiltration	Traps bacteria (total E. Coli) in water.	

### Replacing the Filter

1. Close the feed water adapter (B) attached to the cold water supply line.
2. Open the top cover of the engine (A) and lift out the old filter (J).
3. Place the new filter into the engine (A) and replace the top cover of the engine (A).
4. Open the feed water adapter (B).





## Routine Maintenance

- Periodically check all connections for leaks.
- Replace any connectors and filter housings with proper replacement parts. Contact customer service to order replacement parts.
- Always use the proper replacement filter with the correct size and length.
- Replace the plumber's tape on all threaded connections and fittings annually.

## Care and Cleaning

- Avoid using strong volatile solvents such as soap, detergent, diluent, gasoline, or ethyl alcohol when cleaning the product. These solvents result in cracking, scratching, and discoloration.
- If the faucet will not be in use for an extended amount of time, shut off feed-water adapter.
- Do not lay the engine on its side.
- Do not place the product in direct sunlight.

## Troubleshooting

Problem	Probable Cause	Solution
The amount of water being dispensed decreases significantly.	<ul style="list-style-type: none"> <li>• The filter is blocked.</li> <li>• The filter needs to be replaced.</li> <li>• The feed water adapter is not completely open.</li> </ul>	<ul style="list-style-type: none"> <li>• Clean or replace the filter.</li> <li>• Ensure the feed water adapter is fully open.</li> </ul>
The water quality is poor.	<ul style="list-style-type: none"> <li>• The filter needs to be replaced.</li> <li>• The product has not been used in a long time.</li> <li>• The quality of water and the water source are poor.</li> </ul>	<ul style="list-style-type: none"> <li>• Replace the filter.</li> <li>• Dispense water for at least 3 minutes to flush out any impurities.</li> <li>• Ensure your water source is municipal tap water.</li> </ul>
The engine leaks water.	A component in the engine has failed.	Shut off the water at the main source, and report this issue to customer service.
The product is not dispensing water after changing the filter.	Air is being blocked.	Shut off water, uninstall then reinstall filter, then turn water on again.

## Specifications

Model No.	Dimensions (WxHxD)	Feed Water Pressure	Flow Rate	Feed Water Temp.
UF100FBLK	5.25 x 14.0 x 9.625 in. (13.34 x 35.56 x 25.45 cm)	14.5-58 psi / 0.1-0.4 MPa	3 LPM	39-100°F (4-38°C)

# Warranty

Brio (“Vendor”) warrants to the original purchaser of the Brio Water Filtration System (the “Product”), and to no other person, that if the Product is assembled and operated in accordance with the printed instructions accompanying it, then for a period of one (1) year from the date of purchase, all parts in the Product shall be free from defects in material and workmanship. This Limited Warranty shall be limited to repair or replacement of parts, which prove defective under normal use and service and which Vendor shall determine in its reasonable discretion upon examination to be defective. To take advantage of this Limited Warranty, please follow these steps:

1. Please retain your sales slip or invoice, as Vendor may require reasonable proof of your date of purchase.
2. Contact Vendor’s Customer Service Department using the contact information listed below.
3. Return parts to Vendor, per Vendor’s instructions, at your cost and expense.
4. Upon receipt by Vendor, Vendor shall advise you in writing whether a defect covered by this Limited Warranty exists in any returned part and whether your claim has been approved or denied.
5. Upon Vendor’s approval of your claim, Vendor will replace such defective part without charge to you.

**WHAT THIS LIMITED WARRANTY DOES NOT COVER:** This Limited Warranty does not cover any failures or operating difficulties of the Product due to accident, abuse, misuse, alteration, misapplication, improper installation or improper maintenance or service by you or any third party, or failure to perform normal and routine maintenance on the Product, as set out in the User’s Manual. In addition, this Limited Warranty does not cover damages to the finish, such as scratches, dents, discoloration or rust after purchase.

This Limited Warranty is the only express warranty given on the Product and is in lieu of all other express warranties. Vendor disclaims all warranties for products that are purchased from seller other than authorized retailers or distributors. THIS LIMITED WARRANTY RESTRICTS THE DURATION OF ANY AND ALL IMPLIED WARRANTIES, INCLUDING WITHOUT LIMITATION, THE IMPLIED WARRANTY OF MERCHANTABILITY AND FITNESS FOR A PARTICULAR PURPOSE TO THE ONE (1) YEAR TERM OF THIS LIMITED WARRANTY. UPON THE EXPIRATION OF THE ONE (1) YEAR TERM OF THIS LIMITED WARRANTY, VENDOR DISCLAIMS ANY AND ALL IMPLIED WARRANTIES, INCLUDING WITHOUT LIMITATION THE IMPLIED WARRANTIES OF MERCHANTABILITY AND FITNESS FOR A PARTICULAR PURPOSE, THE PRODUCT BEING THUS SOLD AS-IS, WITH ALL FAULTS. FURTHER, VENDOR SHALL HAVE NO LIABILITY WHATSOEVER TO PURCHASER OR ANY THIRD PARTY FOR ANY SPECIAL, INDIRECT, PUNITIVE, INCIDENTAL, OR CONSEQUENTIAL DAMAGES. OTHER THAN THIS LIMITED WARRANTY, THERE ARE NO WARRANTIES WHICH EXTEND BEYOND THE DESCRIPTION ON THE FACE HEREOF. Vendor assumes no responsibility for any defects caused by third parties. This Limited Warranty gives you specific legal rights, and you may have other rights which vary from state to state. State law may also override statements in this Limited Warranty regarding the restriction on the duration of implied warranties. Some jurisdictions do not allow exclusion or limitation of special, incidental or consequential damages, or limitations on how long a warranty lasts, so the above exclusion and limitations may not apply to you.

**Brio**<sup>®</sup>

**Contact Us**

**Call: +1 844-257-4103**