



Brio®



amphora

**RO Filtration System
with Artesian Pitcher**

Setup Manual

Model No.: ROP100

Table of Contents

Safety Information	3
Intended Use	4
Package Contents	4
Product Features/Description	5
Materials Needed	5
Installation Overview	6
Installation	7
Connect to the Cold Water Supply	7
Install the Reverse Osmosis Drain Saddle	8
Install the Pitcher	9
Make the Connections	10
Operation	10
Startup and Flushing Water	10
Dispensing Water	10
Maintenance	11
Filter Specifications	11
Replacing the Filter	11
Routine Maintenance	12
Care and Cleaning	12
Troubleshooting	13
Warranty	14

Safety Information

WARNING: To reduce risk of injury and property damage, you must read this entire guide before assembling, installing, and operating the filtration system.

WARNING: In order to ensure safety and to avoid injury and property loss to you and others, please be sure to follow the following safety precautions. Misuse with ignoring safety precautions may lead to accidents.

Installation needs to comply with state and local laws and regulations.

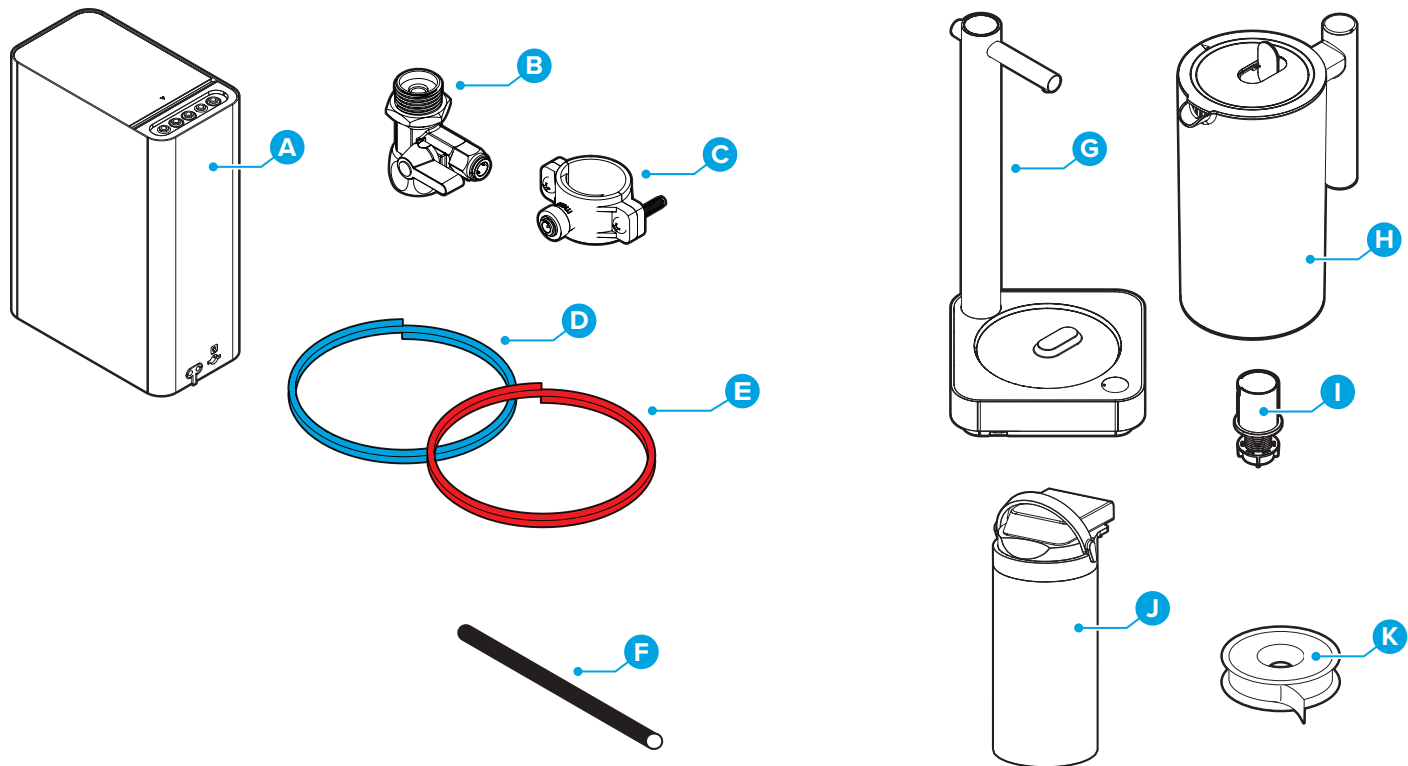
- System must be installed indoors and away from possible environmental damage.
- Avoid exposing and/or storing the pitcher in an environment under 32°F (0°C) or in places with strong sunlight. This could cause parts of the product to age.
- Do not place heavy objects on top of the product.
- Do not place flammable, volatile substances near the product.
- Do not place the product near a heat source or open fire.
- Please install the product as close as possible to the floor drain.
- Do not allow children to operate, touch, approach, or climb on the product without guardians present.
- Strong magnetic devices nearby may cause fire, product damage, or circuit failure. Wet and dusty areas may cause circuit damage.
- When cutting the power Off, do not pull the power cord directly to prevent it from breaking. Keep the plug clean. Do not plug or unplug with wet hands.
- If the power cord is damaged, it must be replaced by professionals from the manufacturer, its maintenance department, or other similar departments. Do not squeeze, fold, knot, or damage the power cord.
- The product must be installed or moved by professional personnel. Disassembling at your own discretion may damage the product or cause electric shock.
- When the water does not meet the municipal water standards (including high sediment content and excessive residual chlorine, etc.), a professional installer must install a pretreatment device before installing the pitcher.
- The optimal water pressure of this product is 0.1-0.4 MPa. If the water pressure is lower or higher than this, install a pressure-boosting or pressure-reducing device accordingly.
- In case of product failure, unplug the pitcher, disconnect it from its water source, and contact customer service.
- When the ambient temperature is low, the flow rate will decrease, which is an inherent feature of the filter.
- Replace the filter regularly.
- To ensure longevity of the pitcher, only use the parts included with this system. For replacement parts, contact customer service.
- It is normal for the product to have slight vibration and noise when processing water.
- If you do not use this product for a long period of time, unplug or disconnect from the power source and shut off the feed water adapter. Upon first use after an extended period of time, run water for 3-5 minutes.

Intended Use

This dispenser is intended to be used in household and similar applications such as:

- Staff kitchen areas in shops, offices, and other working environments
- Farm houses
- Hotels and other hospitality venues
- Catering events and similar non-retail applications

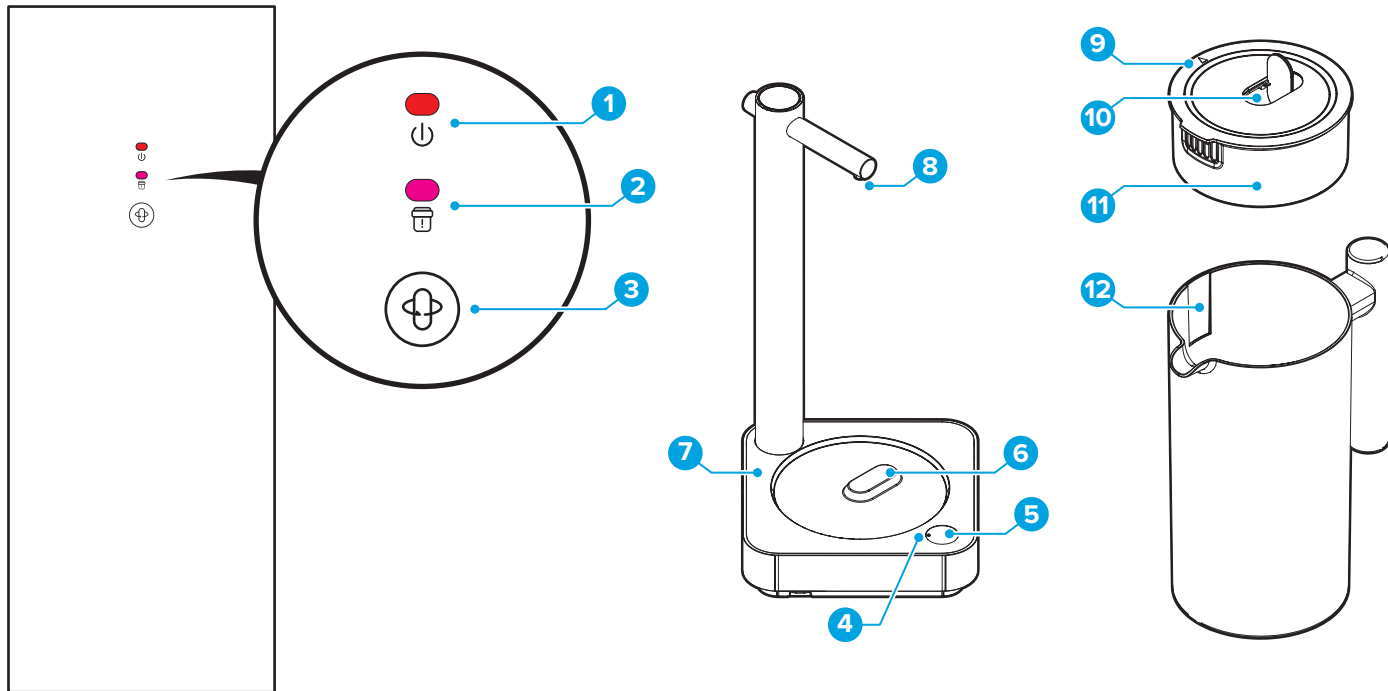
Package Contents



Part	Description
A	RO Pitcher engine
B	Feed water adapter with extra nut
C	Drain saddle with foam gasket
D	Blue RO faucet tube
E	Red feed water tube
F	Drain saddle tube

Part	Description
G	Pitcher stand
H	Pitcher
I	Adapter
J	All in one filter (preinstalled)
K	Plumber's tape

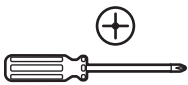
Product Features/Description



Item	Description
1	Power LED
2	Filter replacement indicator
3	Filter reset button
4	Water processing and filter life indicator
5	Water processing switch/Manual water intake button
6	Pitcher locating groove

Item	Description
7	Pitcher base
8	Water dispenser
9	Pitcher lid placement indicator
10	Water connection flip lid
11	Liquid level sensor
12	Pitcher lid placement groove

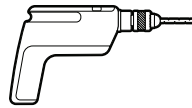
Materials Needed



Phillips-Head Screwdriver



Adjustable Wrench



Power Drill

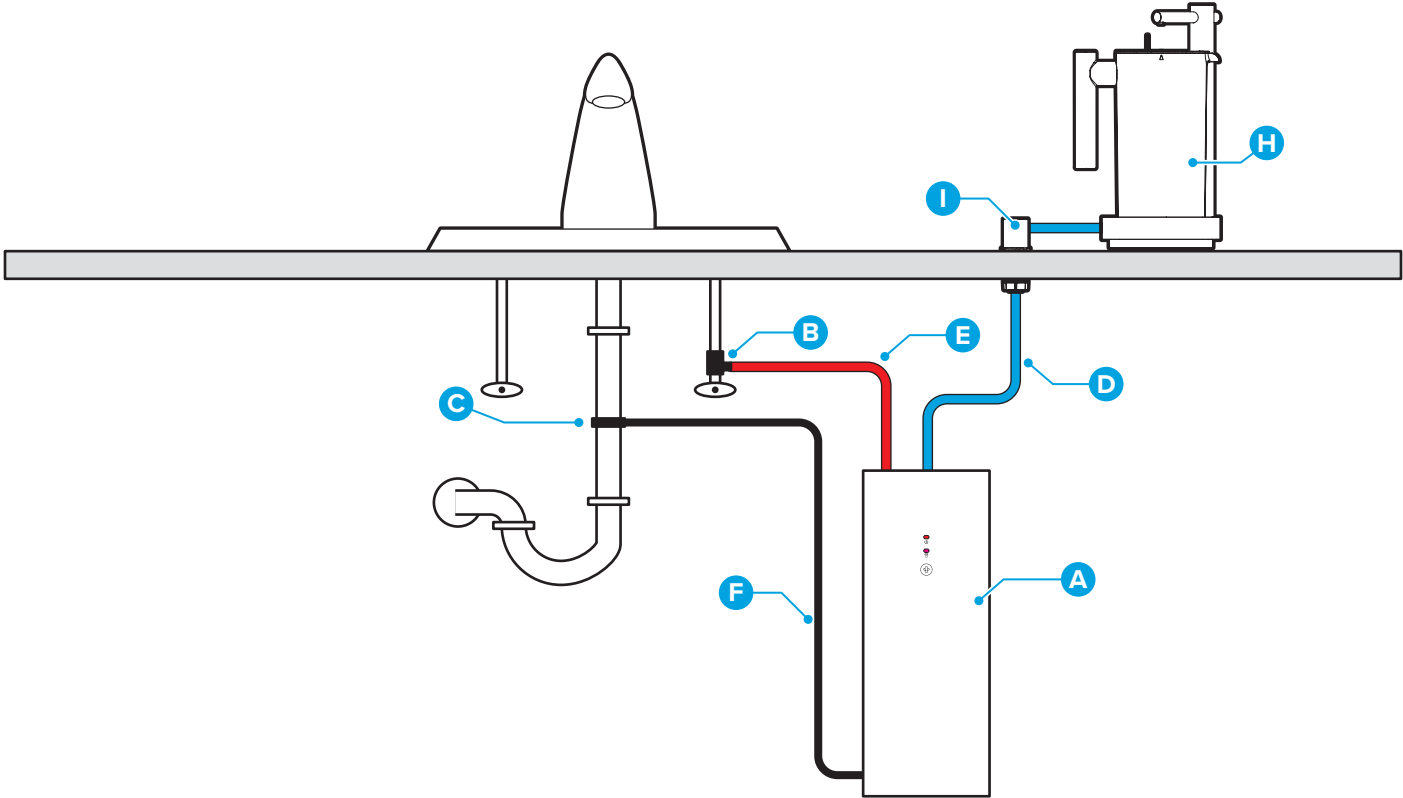


1/4" Drill Bit (for Drain Saddle Valve)



1/2" Drill Bit (for RO Faucet)

Installation Overview



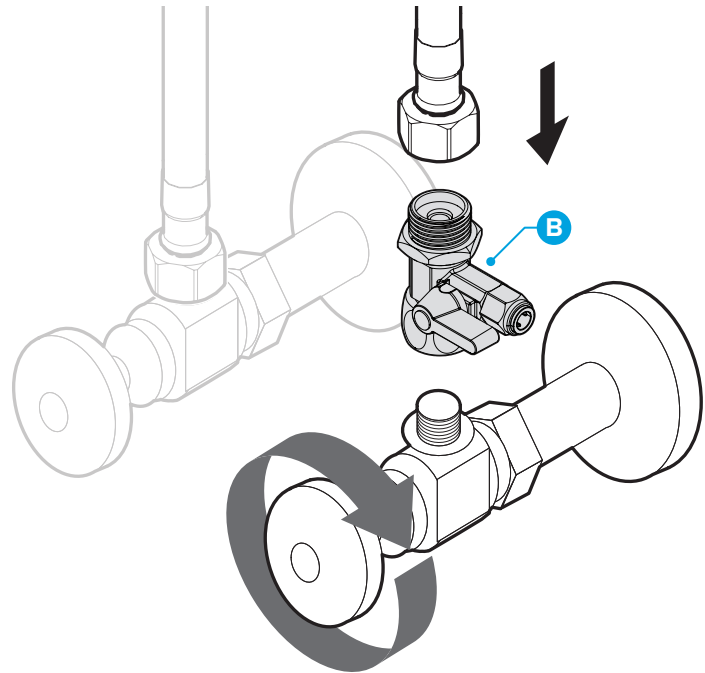
Installation

1. Connect to the Cold Water Supply

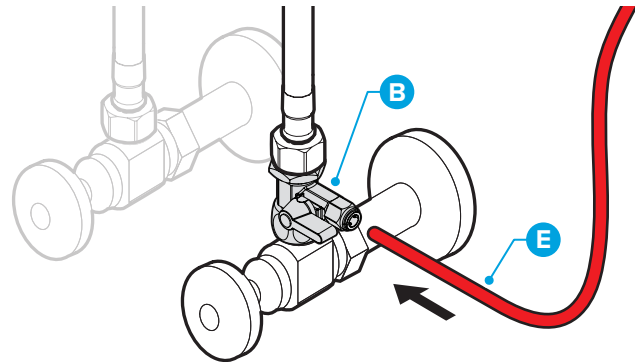
CAUTION: DO NOT CONNECT THIS WATER LINE TO A HOT WATER SUPPLY LINE. The water supply to the unit MUST be from the COLD WATER LINE. Using HOT WATER will severely damage your filters.

- A. Turn off and then disconnect the current cold water supply line.
- B. Connect the feed water adapter (B) to the cold water supply line.
- C. Twist the cold water supply line clockwise on top of the feed water adapter (B) until it is securely connected.

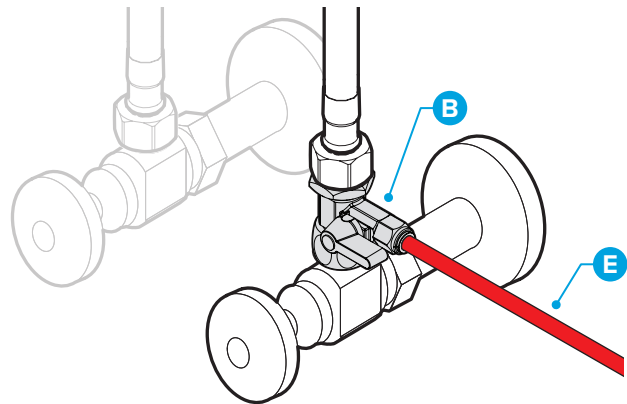
NOTE: An extra adapter nut is included on top of the feed water adapter (B) to attach to a 3/8 in. or 1/2 in. feed plumbing line.



- D. Insert the red feed water tube (E) straight into the quick connector piece of the feed water adapter (B).



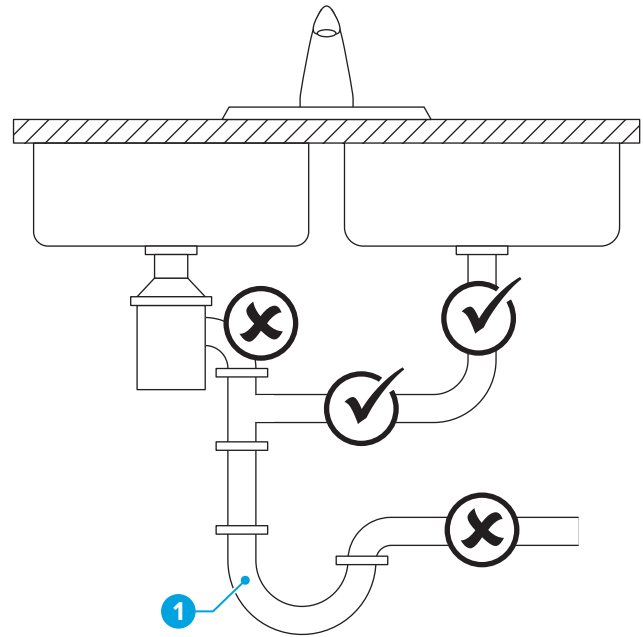
- E. Gently tug on the tube (E) to ensure a secure connection with the feed water adapter (B).



2. Install the Reverse Osmosis Drain Saddle

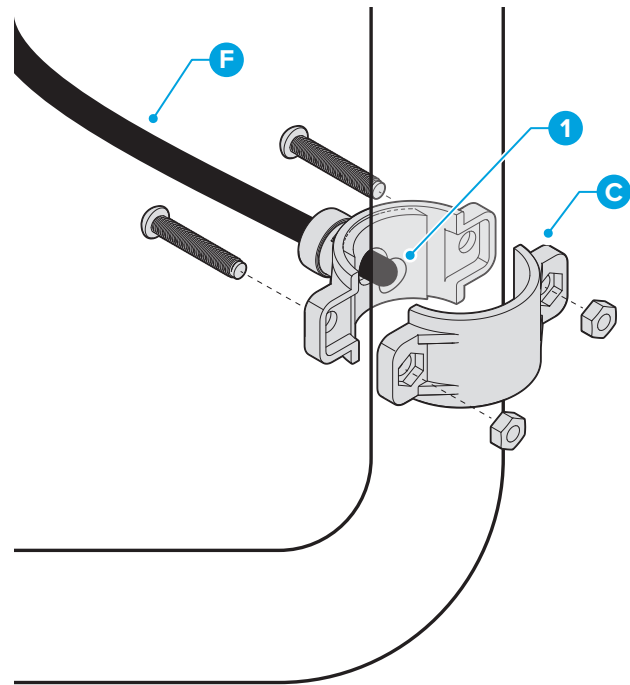
The “RO” filter assembly requires a drain line connection to be installed, which removes rejected water to the sewer. The drain saddle connects the drain line from the dispenser to your drain pipe. The drain saddle is designed to fit around a standard 1.5 in. OD (outer diameter) drain pipe.

- ✓ Always install the drain saddle before the P-trap (1). Ensure the drain saddle is in place on the vertical or horizontal section of the pipe.
- ✗ To avoid clogging the drain line with debris, do not install the drain saddle on a section of piping that is located after the drain pipe meets a garbage disposal or dishwasher drain.



To install the Reverse Osmosis (RO) drain saddle:

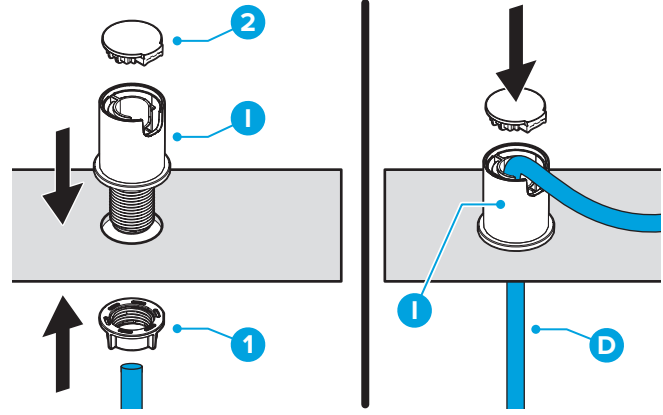
- A. Determine the location for your drain saddle (C) and then make a mark on the drain pipe for the opening (1).
- B. Use your drill and a 1/4 in. drill bit to create a hole at the mark, ensuring you only drill through one side of the drain pipe.
- C. Find the half of the drain saddle (C) with the hole in the center, remove the backing from the foam gasket, align the gasket with the hole on the drain saddle (C), and stick the adhesive side of the gasket to the drain saddle (C).
- D. Position both halves of the drain saddle (C) on the drain pipe with the saddle's opening aligned over the drilled hole, and insert your drill bit through the saddle (C) and drilled hole to ensure proper alignment.
- E. Secure both ends of the drain saddle (C) together using the bolts and nuts, but do not over tighten.
- F. Connect the drain saddle tube (F) to the drain saddle (C).



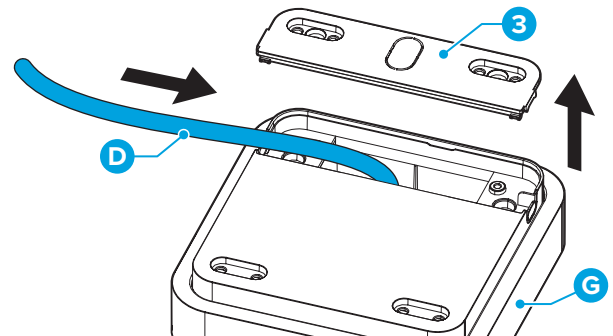
3. Install the Pitcher

IMPORTANT: If your sink does not have a second faucet hole, please contact a licensed professional to create one. Do NOT attempt to drill a faucet hole yourself as this may damage the sink.

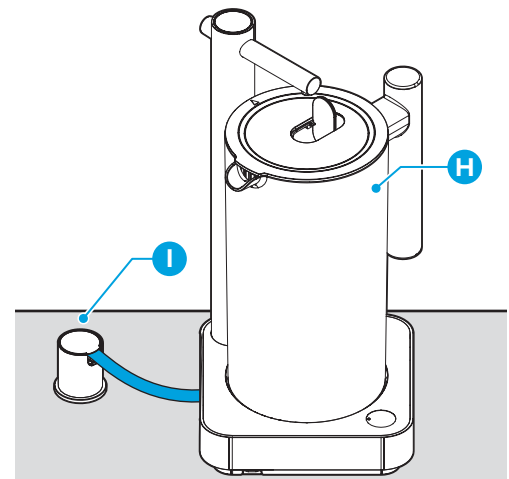
- A. Remove the screw nut (1) and directional cap (2) from the adapter (I) and insert the adapter (I) into the mounting hole on your sink/counter.
- B. Loosely secure the adapter (I) in place from underneath the sink/counter using the screw nut (1).
- C. Pass the blue feed tube (D) into the bottom of the adapter (I) and through the top of the adapter (I).



- D. Remove the cover (3) from the bottom of the pitcher stand (G) and connect the blue feed tube (D) to the pitcher stand (G). Replace the cover (3).
- E. Place the pitcher stand (G) in its final location on the counter and position the pitcher (H) into the pitcher stand (G).

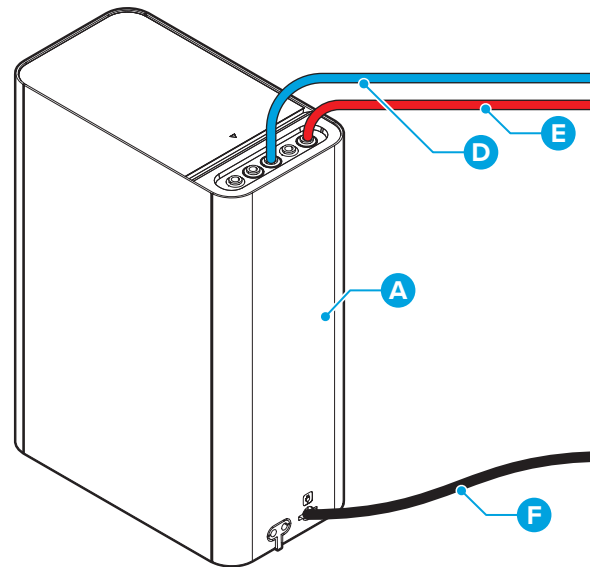


- F. Adjust the blue feed tube (D) to your desired length, replace the directional cap (2) on the adapter (I) and securely tighten the screw nut (1).



4. Make the Connections

- A. Connect the three colored tubes (D, E, and F) to the engine (A).



Operation

Startup and Flushing Water

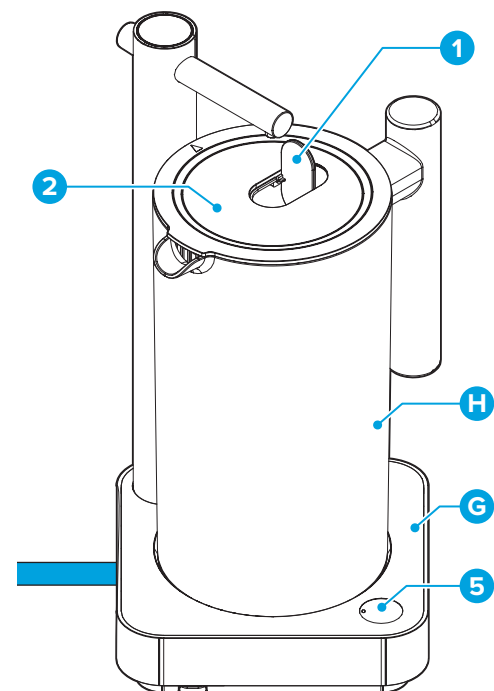
Flush the filter in the engine (A) upon first use and each time you change the filter.

1. Open the feed water adapter (B).
2. Plug the engine (A) into a GFCI outlet. The engine automatically turns on.
3. Complete the steps in the Dispensing Water section below and allow the water to fill the pitcher (H) at least three times and until black spots no longer appear in the water before drinking.

Dispensing Water

1. Before dispensing water, ensure the flip lid (1) on the pitcher (H) is open, the lid (2) is closed, and that the liquid level sensor in the lid is in the correct position with the pitcher body groove.
2. Press the water processing switch/manual water intake button (5) to turn the water dispensing on and off. When the water is turned On (the indicator light is on), water dispenses automatically after you place the pitcher (H) in the base (G).
3. The water turns off automatically when the pitcher is full. Removing the pitcher and pressing the water processing switch/manual water intake button (5) will also turn the water off.

NOTE: Do not block the liquid level sensor in the lid.



Maintenance

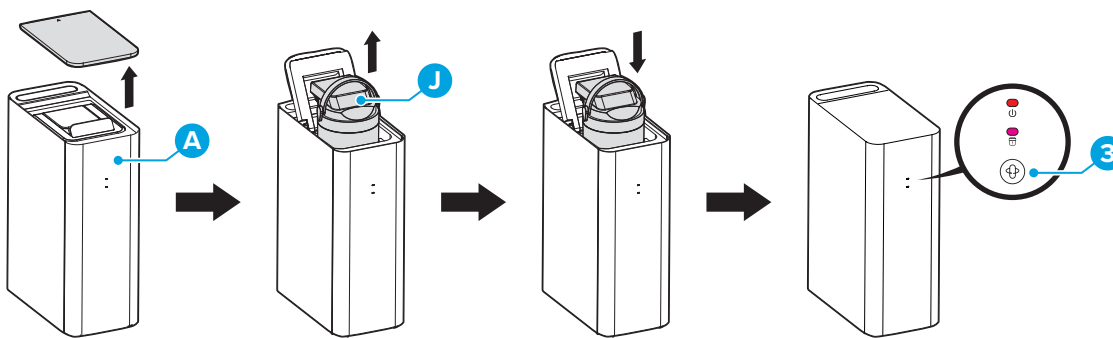
Filter Specifications

Filter Name	Filter Layer	Function	Suggested Lifespan
Integral Composite Filter	PAC	Filters mud, sand, rust, suspended solid, and other large-grained substances.	12-24 months
	RO Membrane	Filters organics (trichloromethane and carbon tetrachloride) and heavy metals (arsenic, lead, and cadmium).	
	Post-positional Carbon Rod	Filters organics, remaining chlorine, and odor.	

Replacing the Filter

When the filter indicator lights on the machine and pitcher base begin to flash, it is time to change your filter. To change your filter:

1. Close the feed water adapter (B) attached to the cold water supply line.
2. Disconnect the power from the engine (A).
3. Open the top cover of the engine (A) and lift to remove the old filter (J).
4. Place the new filter into the engine (A) and replace the top cover of the engine (A).
5. Open the feed water adapter (B).
6. Plug the engine (A) back into the outlet.
7. Press and hold the filter button (3) on the front of the engine (A) for 3 seconds to reset the filter.



Routine Maintenance

- Periodically check all connections for leaks.
- Replace any connectors and filter housings with proper replacement parts. Contact Customer Service to order replacement parts.
- Always use the proper replacement filter with the correct size and length.
- Replace the plumber's tape on all threaded connections and fittings annually.

Care and Cleaning

- Avoid using strong volatile solvents such as soap, detergent, diluent, gasoline, or ethyl alcohol when cleaning the product. These solvents result in cracking, scratching, and turning colors.
- If the pitcher will not be in use for an extended amount of time, ensure you close the valves and remove power from the engine.
- Do not lay the engine on its side.
- Do not place the product in direct sunlight.
- Do not wash the pitcher lid with high temperature water or place the pitcher lid in a high-temperature environment.
- Wipe the pitcher base with a cloth. Do not wash the pitcher base directly with water or soak it in water.

Troubleshooting

Problem	Probable Cause	Solution
The product will not dispense water or stop dispensing water.	<ul style="list-style-type: none"> Liquid level sensor inside the pitcher lid is blocked. The pitcher lid is in the incorrect position. The product is in protected mode. 	<ul style="list-style-type: none"> Check to see if the liquid level sensor is blocked. If there is blockage, remove the blockage. Check the position of the pitcher lid in the pitcher. If the power light and the filter element light flicker at the same time, it indicates the product is in protected mode. Disconnect the pitcher from the power source, then reconnect the power.
The amount of water being dispensed decreases significantly.	<ul style="list-style-type: none"> The filter is blocked. The filter needs to be replaced. The feed water adapter is not completely open. 	<ul style="list-style-type: none"> Clean or replace the filter. Ensure the feed water adapter is fully open.
The water quality is poor.	<ul style="list-style-type: none"> The filter needs to be replaced. The product has not been used in a long time. The quality of water and source is poor. 	<ul style="list-style-type: none"> Replace the filter. Dispense water for at least 3 minutes to flush out any impurities. Ensure your water source is municipal tap water.
The engine leaks water.	A component in the engine has failed.	Shut off the water at the main source, disconnect the power, and report this issue to customer service.
The product is not dispensing water after changing the filter.	Air is being blocked.	Disconnect the pitcher from the power source, shut off the water, replace the filter, turn the water on, and then restore power to the engine.

Warranty

Brio (“Vendor”) warrants to the original purchaser of the Brio Water Filtration System (the “Product”), and to no other person, that if the Product is assembled and operated in accordance with the printed instructions accompanying it, then for a period of one (1) year from the date of purchase, all parts in the Product shall be free from defects in material and workmanship. This Limited Warranty shall be limited to repair or replacement of parts, which prove defective under normal use and service and which Vendor shall determine in its reasonable discretion upon examination to be defective. To take advantage of this Limited Warranty, please follow these steps:

1. Please retain your sales slip or invoice, as Vendor may require reasonable proof of your date of purchase.
2. Contact Vendor’s Customer Service Department using the contact information listed below.
3. Return parts to Vendor, per Vendor’s instructions, at your cost and expense.
4. Upon receipt by Vendor, Vendor shall advise you in writing whether a defect covered by this Limited Warranty exists in any returned part and whether your claim has been approved or denied.
5. Upon Vendor’s approval of your claim, Vendor will replace such defective part without charge to you.

WHAT THIS LIMITED WARRANTY DOES NOT COVER: This Limited Warranty does not cover any failures or operating difficulties of the Product due to accident, abuse, misuse, alteration, misapplication, improper installation or improper maintenance or service by you or any third party, or failure to perform normal and routine maintenance on the Product, as set out in the User’s Manual. In addition, this Limited Warranty does not cover damages to the finish, such as scratches, dents, discoloration or rust after purchase.

This Limited Warranty is the only express warranty given on the Product and is in lieu of all other express warranties. Vendor disclaims all warranties for products that are purchased from seller other than authorized retailers or distributors. THIS LIMITED WARRANTY RESTRICTS THE DURATION OF ANY AND ALL IMPLIED WARRANTIES, INCLUDING WITHOUT LIMITATION, THE IMPLIED WARRANTY OF MERCHANTABILITY AND FITNESS FOR A PARTICULAR PURPOSE TO THE ONE (1) YEAR TERM OF THIS LIMITED WARRANTY. UPON THE EXPIRATION OF THE ONE (1) YEAR TERM OF THIS LIMITED WARRANTY, VENDOR DISCLAIMS ANY AND ALL IMPLIED WARRANTIES, INCLUDING WITHOUT LIMITATION THE IMPLIED WARRANTIES OF MERCHANTABILITY AND FITNESS FOR A PARTICULAR PURPOSE, THE PRODUCT BEING THUS SOLD AS-IS, WITH ALL FAULTS. FURTHER, VENDOR SHALL HAVE NO LIABILITY WHATSOEVER TO PURCHASER OR ANY THIRD PARTY FOR ANY SPECIAL, INDIRECT, PUNITIVE, INCIDENTAL, OR CONSEQUENTIAL DAMAGES. OTHER THAN THIS LIMITED WARRANTY, THERE ARE NO WARRANTIES WHICH EXTEND BEYOND THE DESCRIPTION ON THE FACE HEREOF. Vendor assumes no responsibility for any defects caused by third parties. This Limited Warranty gives you specific legal rights, and you may have other rights which vary from state to state. State law may also override statements in this Limited Warranty regarding the restriction on the duration of implied warranties. Some jurisdictions do not allow exclusion or limitation of special, incidental or consequential damages, or limitations on how long a warranty lasts, so the above exclusion and limitations may not apply to you. Qui odia voluptaturio odissunt harum faceperis sum nonse nienis eritae re, ut ut quo inciet ut etur aria quatquisita conserum quis pe pliscilis rem is accus.

Ro quo ius rerum ne simodi ut la est, con es aut excere essim voluptae nulluptus eum faccus, vellant est, quamus.

Xero omnis maionsedis iumquo cus iditis ut rem vollorest laborem a quatusam dolorpor aut ad quiae plit lab ipsa quatibe archit odioribus molessundus molorib erchill antibeas sequi cullupt aepuda voloratur? Qui non et eium ipsam fugia dit dic torro cor maio ma cor autatin ctassum re cus, to tem eossunt oreium et lissit quas rerume adiaestrunt.

Culpa quam sedisimus eatur as resseque natesto reperunt.

Sus estis pratus. Pit es as et quisque praere alit veria sitatis autectam et es alibusa quaspis aliquam, is ne lam voluptibus sam, ipsant, cus reiunt harit faccupiende et omnissit atior solorpor moditin ctecus as sit volo bea corest, iumeniet audist adio veliquist, ut lant, sim volum solut et et quam undus aspit doluptio omnim eostrum quidelit, velisci volest, odignim quiae dolo tem quatem si doluptatem quam volore, nem as ratem quiam et ad maionsequi andessum quis dias delis anim quae volorep uditiss itatem re essequatur simi, odit et facea volorem volupta tincte velectatur sam harumqui quis estruptatem. Itate plibeatem rem ut ommo eatur? Vit, quidell atiami dusandel moluptum audantiorio. Et evenis voloressunt.

Temquas asperit omnimus explanimusto voluptatem ra audam est, inulliquam estios natus que sum dellore icienis esti volessu nditas nihilit, aligendis nos int la ducia dolorenitas mo berrum dolorunt molorrovid quibusdae consequae pedisquunt audaepro officab oriorro mossumet volorpore volenimod quatum eribere ceatum architatus core odiam dolum nos volorem. Pissecerum res eiuscim quasper feriamus ut voluptae preptatet dolut et, et quat reiribusae repraecus vellabo. Enti doluptae dolor sus et autenim intur?

At hiliam lautem veles ant alicitur? Equia quatemolorum est, optat ea sin commodis sedisi derorestrum ipicipis quis etur, tempor as is eariam quia velignit et autesciate cum volorit, sit atius ut et as nit laboreste velia vellaut liatio. Uptas accusdae volorum res alia quiat acia dolor adissi ommoditae cuscietur? Ma sime nobitas aliquosam sum quas sum veritassin nobis plabo. Itatur as aut fuga. Met et volende re perferempe es ex estis nullatit rerehenis animaximped modigente exerum que simet vollani tiuntibus re vid quos re volor mint ad quiaeri cuptam, id essit des dest, illore venihil iquamus.

Beaqui rem eruptae caerum explabores rat aspere, sum ipsam ratem eium nis moloriberi ipsaperem viduciis volorat eicit volorep erchite es endi a qui blaut laut offictatet aliquam, sint et offictat.

lhillat volor reptam sundita turione et volupta tessimus.

Videl id experiant quod ut eum dolendi beritat maiores ipsum nossimus esti aboremmod ulpa cum cuscim si blabores ut odati aut aut lignimi, nonserianda del ilita plabrae nis et ineliquo optatis et repture mporepre, odi consequi volut quid et aliqui beria alitat laborer ibusdae quias aut ex et venimil ipsum sum eturest, odit estem quaturit litinit officium acia dolupta ecabore hendisime dollupt atemperunt quam accatas aut late rehendandis et autenectam, omnis rempore nescim exerior iamus, sedit ex et, optiatu scienesci blabore ribeaquos nis deleseria ne simet et lab int quosam eturemporio. Itatus aut quatem quam, suntio ipsumquias est et arum, que magnitas comni cuscia iducimus res ullorent ad quis ut inctorundis essitis et volorrorem ipsam fugitas esto everae sequi quis quia venempo rereium volore sequi ut quis cone aut reptatusam, consedici tem ium raestium quo et ea dolenihi ctatem is doluptatem fuga. Ut es ea quia ium as aped magnatis dita et odis alignam apicipsam sequi omniatatem nisto omni odipis de con cus samust vendele ctectec ullatibus mo omnis rae cus dolorror apernatiam eatur, at odignim agnatus qui ipicat eos quis explias piento iur?

Erum coribus aerumet que veliquunt.

Estiasi nctur? Num arcia into berrovit voloremperum dolorporum vellab in cone enihit eum doluptatur aligenima sum lique venim cuptatur repudamus as eum, acesciditio. Ita ipsumqui occus aut ipsam dis eos coratus volectur, totatur sit qui cupti quunt ex et ommolestrum re porum qui dolupicae verrunt delluptatur, solorrore pore ipienducil ipsant, vel eieur aut audicip sandam fugiae nos enimoluptas eaquiat.

Dem facepra tioriat invelia praturestem voluptatem quaspictur, soleniatem repudia plia qui volupta ventin re esciisti dios susciistrum eaquisin culparu ptiniss equodignate conem rat re nus dest doluptaquis des ratat.

Asimusc iassusd anditas audiatem qui cum fugiae poreius ciunt, eicia doluptatusam dolessent velitis adisque nullesto et ut everferum ea as vento debitis dolo tem hit illicit et lique pelenimi, culluptatiis autatis modi ipicilit velias exeria voluptat ut fugia dero doluptaque eum ressit, quid eosam quam rest aute es seque sam, ea quam quos essunt inis pore con comnis eos aspere namus es et est, apitis ilis et eum es dolore et intest pore, accuaptatat exerum fugit laccus. Sequi delitem ossime siminte mporum voluptae is simust maximint eatibus peruptiae voloreratur maio quibus eum voluptame culpa et et ullaborepero voluptat ad moluptatur rem estotae

Brio[®]

Contact Us

Call: +1 844-257-4103