

Brio®



**Sparkling Water Countertop Water Dispenser
with Refillable 5-Liter Water Tank**

Setup Manual

Model No.: CLCTPOU630UV2SB

Table of Contents

| | |
|--|-----------|
| Safety Information | 3 |
| Package Contents..... | 3 |
| Product Features | 4 |
| Touch Panel Description..... | 4 |
| Operational Specifications..... | 5 |
| Technical Specifications | 5 |
| Installation..... | 6 |
| Determine Installation Location..... | 6 |
| Check Switches and Filter Bypass | 6 |
| Materials Needed | 6 |
| Connect to Cold Water Supply | 6 |
| Flush the Filters | 7 |
| Install Filters and CO2 Cylinder..... | 8 |
| Optional Plumbed-in Installation..... | 8 |
| Install Water Tank..... | 9 |
| Fill Water Tank | 9 |
| Plug in Power Cord and Start Up Dispenser..... | 9 |
| Operation..... | 10 |
| Dispense Cold Water | 10 |
| Dispense Room Temperature Water..... | 10 |
| Dispense Hot Water | 10 |
| Dispense Sparkling Water | 10 |
| Turn Night Light On/Off..... | 10 |
| Replace the Filters..... | 10 |
| Filter Replacement Schedule..... | 11 |
| Replace CO2 Cylinder | 11 |
| Refill Water Tank..... | 11 |
| Connect an External CO2 Cylinder..... | 11 |
| Care and Maintenance..... | 11 |
| Clean the Internal Tanks | 12 |
| Troubleshooting | 13 |
| Warranty..... | 14 |

Safety Information

WARNING: To reduce risk of injury and property damage, you must read this entire guide before assembling, installing and operating the dispenser.

WARNING: This product dispenses water at very high temperatures. Failure to use properly can cause personal injury. When operating this dispenser, always exercise basic safety precautions, including the following:

- To protect against electric shock, do NOT immerse cord, plug, or any other part of the dispenser in water or other liquids.
- Do NOT use the dispenser if the power cord becomes frayed or otherwise damaged. If the power cord is damaged, it must be replaced by the manufacturer, its service agent, or similarly qualified persons in order to avoid a hazard.
- To provide additional protection from risk of shock, the dispenser MUST be connected to a ground fault circuit interrupter (GFCI) outlet at all times. Use of an extension cord will void any warranties.

WARNING: The dispenser must be grounded – if the appliance is improperly grounded, it may result in electric shock.

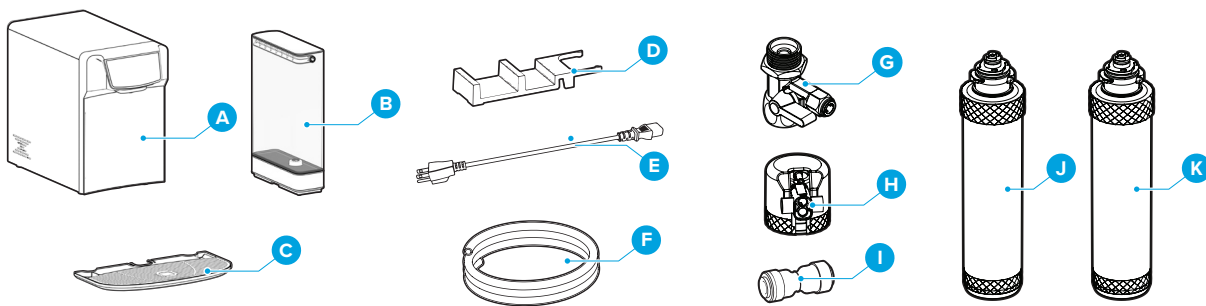
- Do NOT use a shared socket.
- Install and use on a hard, flat, and level surface. Keep out of direct sunlight and away from heat sources.
- Do NOT clean dispenser with a water jet.
- Unplug power cord or disconnect power supply before performing any maintenance.
- Unplug the power cord and turn off water source if dispenser is not to be used for an extended period.
- This dispenser can be used by children aged 8 years and above and by people with reduced physical, sensory, or mental capabilities or lack of experience and knowledge, as long as they are under supervision or guidance on safe use of dispenser and understand the risks involved. No child should clean or maintain the dispenser without supervision.
- Do NOT use in environments where the ambient temperature is lower than 41 °F (5 °C) or higher than 107.6 °F (41 °C).

WARNING: UV light source. Disconnect the electrical supply to the UV radiation BEFORE opening cover.

- UV-LED lamp must be repaired by manufacturer only.
- UV-LED lamp model no. VTWP-RH35P-M17A, rated DC 24V, 0.8W.
- Disposal of the LED-UV lamp must be done in accordance with local laws and regulations.

WARNING: Designed for use with 120V AC power only. DO NOT use with 220V outlet.

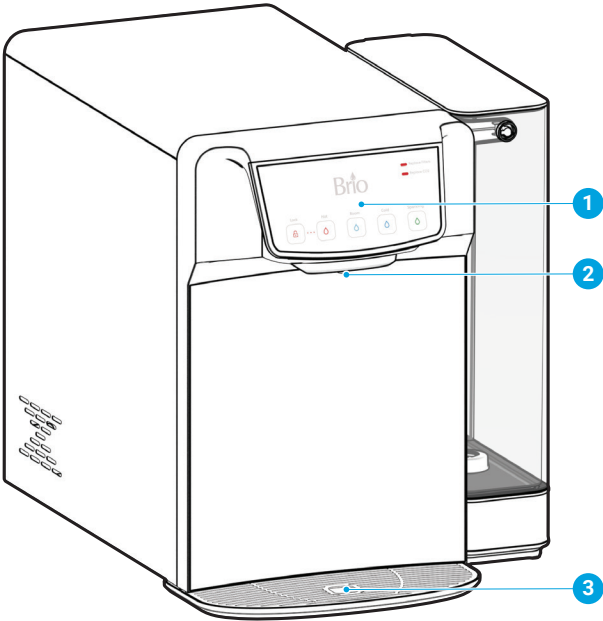
Package Contents



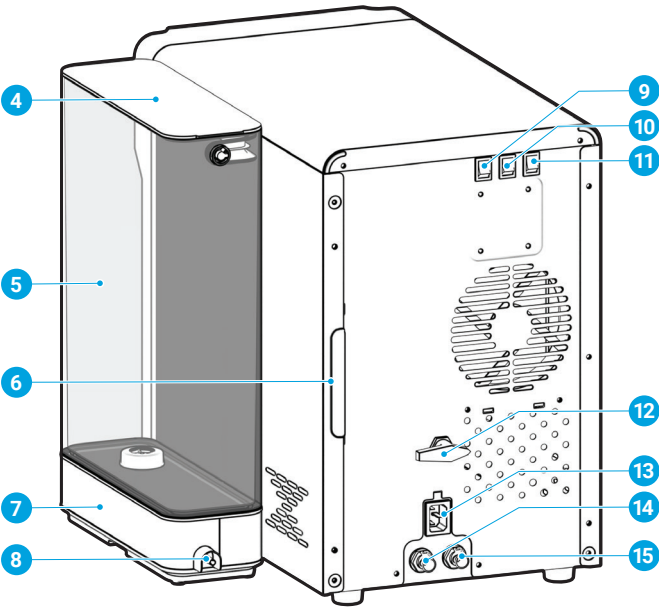
| Part | Description |
|------|-----------------|
| A | Water dispenser |
| B | Side water tank |
| C | Drip tray |
| D | Tank connector |
| E | Power cord |
| F | 1/4" PE tubing |

| Part | Description |
|------|--------------------------------------|
| G | Feedwater adapter |
| H | Filter housing (for filter flushing) |
| I | Quick connect |
| J | Sediment filter |
| K | Carbon filter |

Product Features



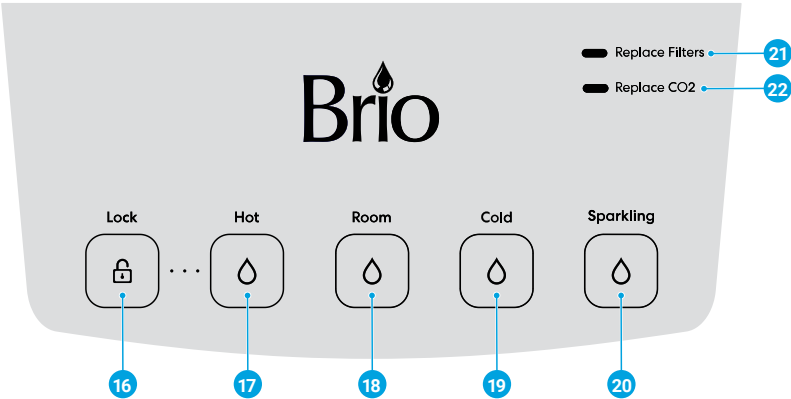
| Part | Description |
|------|---------------------------|
| 1 | Touch panel |
| 2 | Night light |
| 3 | Drip tray |
| 4 | Water tank lid |
| 5 | Water tank |
| 6 | Filter/CO2 cylinder cover |
| 7 | Water tank base |
| 8 | Water outlet |



| Part | Description |
|------|---------------------------------------|
| 9 | Night light switch |
| 10 | Heating switch |
| 11 | Cooling switch |
| 12 | Filter bypass |
| 13 | Power cord socket |
| 14 | Water inlet |
| 15 | CO2 inlet (for external CO2 cylinder) |

Touch Panel Description

| No. | Description |
|-----|------------------------------------|
| 16 | Child safety lock |
| 17 | Hot water button |
| 18 | Room temperature water button |
| 19 | Cold water button |
| 20 | Sparkling water button |
| 21 | Replace filters light/reset button |
| 22 | Replace CO2 light |



Operational Specifications

You must use the dispenser within the following operational parameters to ensure safe, optimal performance.

| Model No. | CLCTPOU630UV2SB |
|------------------------------------|--|
| Rated Voltage / Frequency | 115 V~ / 60 Hz |
| Rated Current | 6.5A |
| Cooling Current | 1.8A |
| Heating Current | 4.5A |
| Operating Ambient Temperature | 41–107.6 °F (5–41 °C) |
| Operating Humidity | ≤90% |
| Operating Source Water | Municipal water with TDS ≤250 ppm |
| Operating Source Water Temperature | 39–100 °F (4–38 °C) |
| Inlet Water Pressure | 0.1-0.3 MPa |
| Inlet Gas Pressure | 0.4±0.03 MPa |
| Inlet Gas Pipe | φ1/4" |
| CO2 Cylinder (Not Included) | Universal 60 L / Screw-in type with thread M18x1.5 |
| Cylinder Installation | Built-in, or by external adapter |
| External Adapter Pressure Setting | 0.4±0.03 MPa |

Technical Specifications

CAUTION: This unit dispenses water at temperatures that can cause severe burns. Avoid direct contact with hot water. Keep children and pets away from unit while dispensing. Never allow children to dispense hot water without proper and direct supervision. Unplug unit to prevent unsupervised use by children.

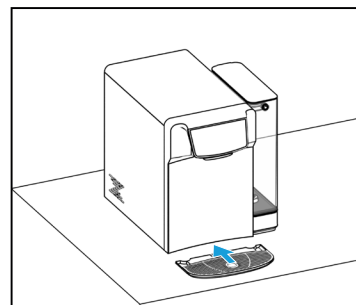
| Model No. | CLCTPOU630UV2SB |
|-----------------------------------|--|
| Raw Water Tank Volume | 5 L |
| Cold Tank Volume | 3.2 L (incl. soda tank: 700 mL) |
| Hot Tank Volume | 1 L |
| Room Tank Volume | 2 L |
| Heating Capacity | 4.5 L/h (≥185 °F / 85 °C) |
| Cooling Capacity | 5 L/h (≤50 °F / 10 °C) |
| Sparkling Water Carbonation Level | 3.0–3.2% |
| Cooling Technology | Compressor |
| Condensation | Forced ventilation (fan) |
| Refrigerant | R134a, 1.27oz. |
| Net Weight | 41.88 lb. (19 kg) |
| Product Dimensions (WxHxD) | 14.4 x 16.73 x 19.29 in. (36.6 x 42.5 x 49 cm) |
| Dispense Point to Drip Tray (H) | 11.5 in. (29.21 cm) |
| Drip Tray Area (WxD) | 10.5 x 3.5 (26.67 x 8.89 cm) |
| UV Lamp Service Life | 10,000 hours / 3 years |
| Noise (dBA) | ≤49 dB |

Installation

Determine Installation Location

1. Locate the dispenser on a hard, level surface that is out of direct sunlight and near a grounded outlet.
2. The fan outlet side of the dispenser should be placed at least 4 in. (10 cm) from the wall.
3. Install grill into drip tray. Insert the drip tray into the groove at the front bottom of the dispenser and push into place. Ensure drip tray sits completely on counter and does not extend off it.

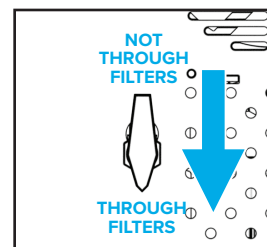
IMPORTANT: Dispenser should stand upright for 24 hours BEFORE plugging in to allow oil to settle back into the compressor. Failure to do so may damage the compressor and void warranty.



Check Switches and Filter Bypass

1. Ensure night light, heating, and cooling switches are in the OFF position.
2. The Filter Bypass either enables or disables the passage of water through the filtration system.
 - If you are using the dispenser's filtration system, turn the Filter Bypass valve so that the arrow is pointing down to "THROUGH FILTERS."
 - If you are using an external filtration system or whenever you sanitize the internal tanks of the dispenser, turn the valve so that the arrow points up to "NOT THROUGH FILTERS."

IMPORTANT: Before installing filters, ensure Filter Bypass valve points up to "NOT THROUGH FILTERS" otherwise water leakage may occur. Once filters are installed, turn the Filter Bypass valve so that it points to "THROUGH FILTERS."



Materials Needed

- Tube cutter
- Wrench
- Plumber's tape

Connect to the Cold Water Supply

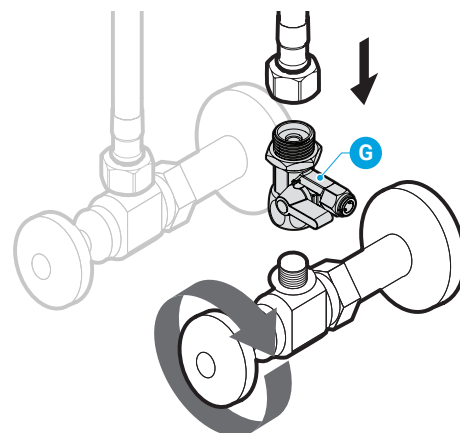
CAUTION: DO NOT CONNECT THIS WATER LINE TO A HOT WATER SUPPLY LINE. The water supply to the unit **MUST** be from the COLD WATER LINE. Using HOT WATER will severely damage your filters.

NOTE: You will need 2 pieces of PE tubing to flush filters. Ensure sufficient length to accommodate distance from feedwater adapter to filter, and from filter to sink or receptacle.

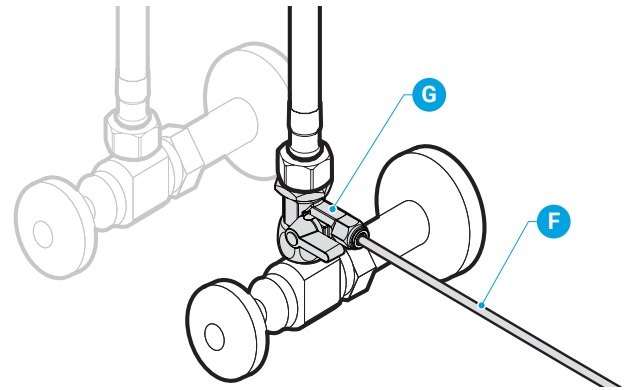
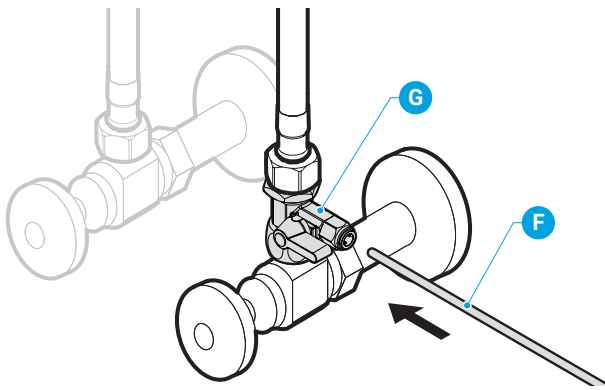
IMPORTANT: We recommend using plumber's tape on threaded connections to ensure a secure seal.

1. Turn off cold water supply, then disconnect cold water pipe from cold water supply line.
2. Connect the feedwater adapter to the cold water supply line.

NOTE: An extra adapter nut is included on top of the feedwater adapter to attach to a 3/8 in. or 1/2 in. plumbing line.



3. Connect the cold water pipe to the top of the feedwater adapter.
4. Insert one end of cut PE tubing directly into feedwater adapter quick connect. Gently tug on tubing to ensure a secure connection.

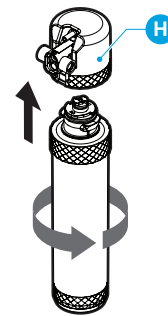


Flush the Filters

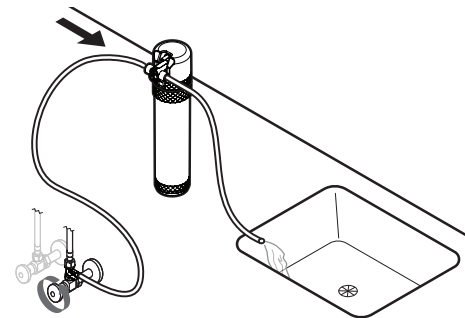
Follow this procedure every time you replace your filters.

IMPORTANT: Ensure the water supply is off before you begin.

1. Connect a filter to the filter housing (H) by twisting the filter counterclockwise.

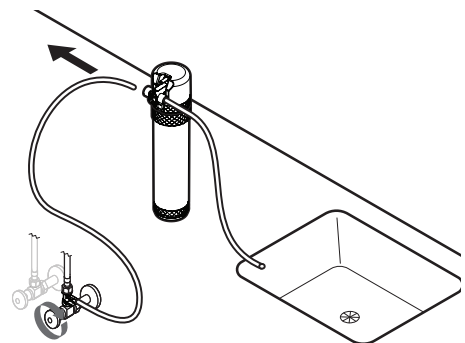


2. Connect the free end of the PE tube to the left side of the filter housing.
3. Connect the second piece of PE tubing to the right side of the filter housing and lay the open end of the filter flushing tube over a sink or receptacle to collect water.



4. Turn on water supply and follow instructions in table below to flush filters.

IMPORTANT: After each filter is flushed, be sure to shut off water supply before disconnecting tubes to flush the next filter.



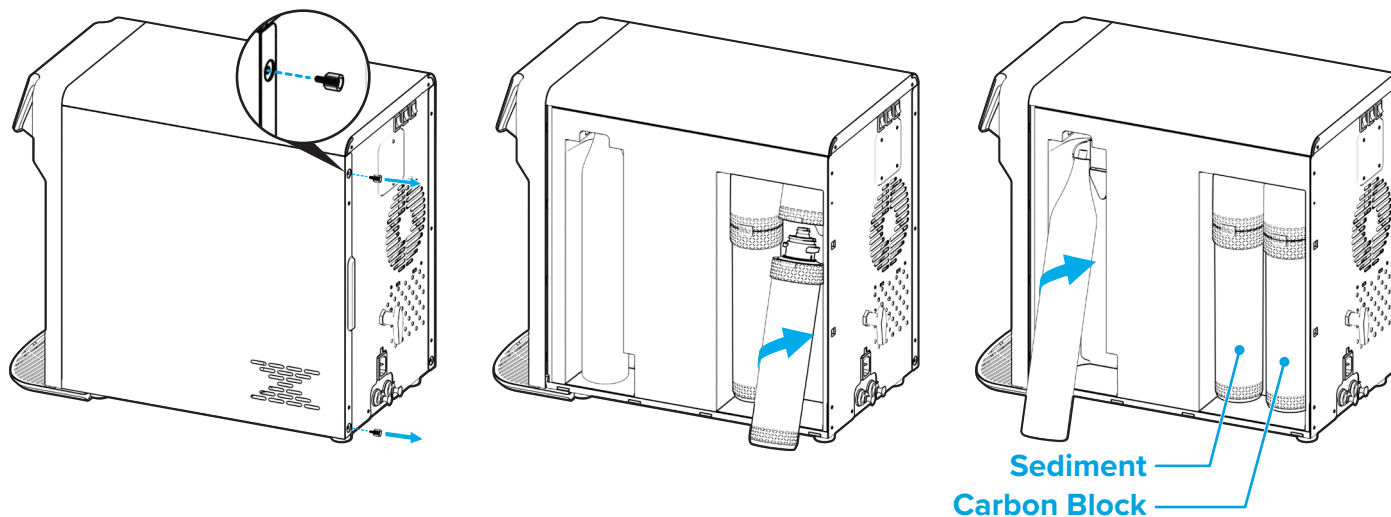
| Stage 1: Sediment Filter | Stage 2: Carbon Block Filter |
|---|--|
| At first, water may appear cloudy. Flush filter for an additional 4 minutes <u>after</u> water runs clear. | At first, water may contain black debris. Flush filter for up to 4 minutes or until water runs clear. |

Install Filters and CO2 Cylinder

1. Before beginning, ensure that the Filter Bypass valve points to “NOT THROUGH FILTERS.” Remove the 2 screws from the filter/CO2 cylinder cover, then remove the cover. Set aside in a safe place.
2. Install filters by rotating counterclockwise into corresponding filter housing. Sediment filter goes on the left, and carbon filter goes on the right.
3. To install CO2 cylinder, rotate counterclockwise into gas regulator until it is securely attached and no sound of CO2 releasing can be heard.

IMPORTANT: Before installing the CO2 cylinder, ensure the top of the cylinder is flat and has no gap at the edge. If there is a gap, it will cause CO2 leakage, which may damage the sealing ring of the CO2 regulator.

4. Reinstall filter/CO2 cylinder cover, securing with screws.



Optional Plumbed-in Installation

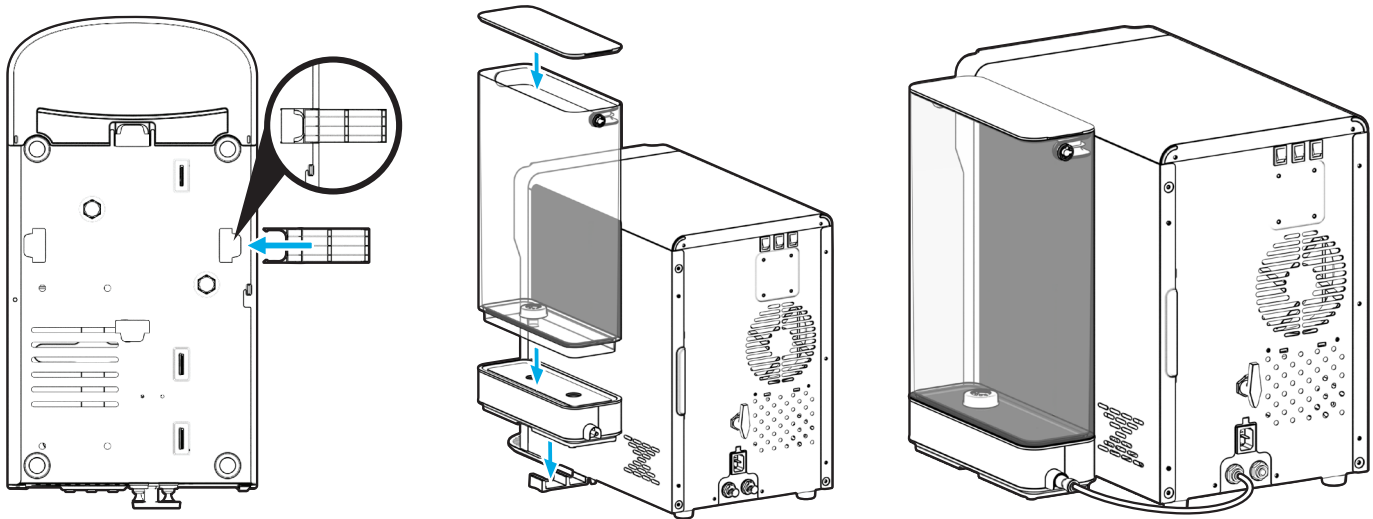
The PE tubing connected to the cold water supply can be connected to the back of the dispenser so that the water tank does not need to be filled and emptied manually.

If you wish to use the water tank instead, proceed to “Install Water Tank.” However, if you prefer a plumbed-in installation, follow these steps:

1. Make sure cold water supply is off before beginning.
2. Remove the safety plug from the water inlet on the back of the dispenser by pressing in the collar first to release it then pull the safety plug out.
3. Connect the free end of the PE tubing into the water inlet. Tug gently to ensure a secure connection.
4. Turn on cold water supply. Proceed to “Plug in Power Cord and Start Up Dispenser.”

Install Water Tank

1. Insert the tank connector to the bottom right of the dispenser as indicated in the line drawing.
2. Place the water tank base on the tank connector.
3. Connect the 1/4" quick connect to the water outlet on the back of the tank base.
4. To remove the safety plug from the water inlet on the back of the dispenser, press the collar first to release it then pull safety plug out.
5. Cut a piece of PE tubing the appropriate length to reach from the water outlet to the water inlet.
6. Insert one end of the tubing into the water outlet 1/4" quick connect and the other end into the water inlet. Tug both ends to ensure a secure connection.



Fill Water Tank

1. Remove the water tank lid and fill the water tank with water to MAX indicator on water tank. Place the water tank onto the water tank base and install tank cover.

IMPORTANT: Water tank is relatively heavy when full and may require two hands to lift.

Plug in Power Cord and Start Up Dispenser

1. Connect the power cord to the back socket on the dispenser, then connect to grounded outlet.

NOTE: Once plugged in, the dispenser will automatically begin routing water to the internal tanks. Upon initial use, it takes about 6 liters of water to fill internal tanks. If necessary, refill water tank.

2. Turn the heating and cooling switches to the ON position.

Operation

Dispense Cold Water

1. Place a container under the dispense point and press the cold water button to dispense.
2. Release button when you've dispensed the desired amount.

NOTE: If no cold or sparkling water is dispensed for 4 or more hours, the dispenser will enter Energy Saving mode and the compressor will stop cooling water to the maximum chill temperature. When cold or sparkling water is dispensed again, the dispenser will automatically exit this mode, and water will immediately begin to fully chill. Therefore, you may notice your cold and sparkling water are a little warmer when first dispensed in the morning.

Dispense Room Temperature Water

1. Place a container under the dispense point and press the room temperature water button to dispense.
2. Release button when you've dispensed the desired amount.

Dispense Hot Water

1. Place a container under dispense point. Touch child safety lock for one second to unlock hot water button. You will hear a beep.
2. Immediately press hot water button to dispense hot water.
3. Release button when you've dispensed the desired amount. Hot water button will automatically relock.

Dispense Sparkling Water

1. Place a container under the dispense point and press the sparkling water button to dispense.
2. Release button when you've dispensed the desired amount.

NOTE: Sparkling water dispenses more loudly than the other water choices. This is caused by the pressure required to push the water out. This is normal. Additionally, then you release the button, a short flush of water will come out due to pressure. This is normal.

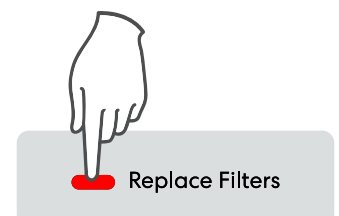
Turn Night Light On/Off

For your convenience, the night light can be turned on and off. To turn it on, turn the switch on the back of the dispenser to the ON position. To turn off, switch to OFF position.

Replace the Filters

When the replace filters light is illuminated in red, the filters have expired and need to be replaced.

1. Flush new filters according to "Flush the Filters" section.
 2. Remove screws from filter/CO2 cylinder cover, then remove cover and set aside.
 3. Rotate the Filter Bypass valve to "NOT THROUGH FILTERS."
- NOTE:** When replacing filters, a small amount of water will flow from the filter housings. Place a clean dry cloth at the bottom of the filter compartment to absorb any water.
4. One at a time, rotate expired filters upward 45°, then rotate clockwise to detach from filter housing.
 5. Discard expired filters. Rotate new filters counterclockwise into filter housings until securely connected.
 6. Reinstall filter/CO2 cylinder cover.
 7. Rotate the Filter Bypass valve to "THROUGH FILTERS."
 8. Press replace filters light/reset button for 3 seconds. You'll hear 3 rapid beeps in succession and the light will go off. The filters are now reset.



Filter Replacement Schedule

| Filter Name | Model No. | Capacity | Function |
|--------------|------------|--------------------------------|---|
| Sediment | NFMPP5M | 6-12 months or 3,600 liters | Performs coarse filtration of inlet water, removing sand, rust, dirt, and other suspended solids. |
| Carbon Block | NFMCTO5MS2 | 6-12 months or 3,600 liters | Removes chlorine and other other unpleasant tastes and odors. |

Replace CO2 Cylinder

When the replace CO2 light illuminates in red, it's time to replace the CO2 cylinder.

1. Remove screws from filter/CO2 cylinder cover, then remove cover and set aside.
2. Rotate the empty CO2 cylinder clockwise out of the gas regulator.
3. Dispose of properly.
4. Rotate a new CO2 cylinder counterclockwise into gas regulator until there is a secure connection and no sound of CO2 releasing can be heard.
5. Reinstall filter/CO2 cylinder cover.

Refill Water Tank

When the room temperature water button blinks, the water tank is empty and needs to be refilled.

1. Refill tank with fresh water. It takes several minutes for internal tanks to refill. When all internal tanks are filled, the room temperature water button will stop blinking.
NOTE: After you refill the water tank, press replace filters/reset button for 2 seconds. You will hear 2 beeps and the room temperature water button light will stop blinking. This will help speed up the process of refilling the internal tanks.

Connect an External CO2 Cylinder

If you wish, you can purchase a larger CO2 cylinder with an adapter.

1. Using PE tubing, connect adapter to CO2 inlet at the back of the dispenser.
2. Gently tug on tubing to ensure a secure connection.

NOTE: The inlet CO2 pressure should be 0.4±0.03 MPa.

Care and Maintenance

This dispenser runs on a continuous UV cleaning cycle. It works for 40 minutes, turns off for 140 minutes, and then comes back on again. This cycle continuously repeats as long as the dispenser is plugged in and on.

IMPORTANT: Always unplug dispenser before undertaking any cleaning or maintenance.

- Remove water tank and clean as needed. Follow the instructions of a purchased food-grade citric acid cleaner to remove any scale buildup.
- Do not immerse the dispenser in water or any other liquid for cleaning. Instead, use a clean, damp cloth to wipe off.
- Always replace filter element in a timely manner to ensure optimal filtration.

Clean the Internal Tanks

The internal tanks should be cleaned every 3 to 4 months to remove any mineral buildup and optimize dispenser performance.

NOTE: If the dispenser has been installed as a point-of-use unit, you must return it to the original side-tank setup before cleaning the internal tanks.

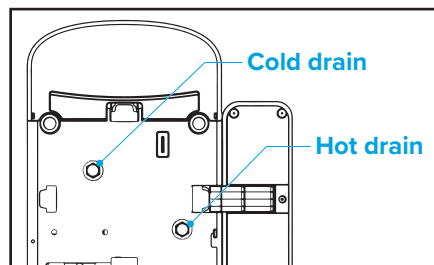
Gathering the following supplies:

- 400g citric acid crystals, divided into two 200g portions
- Stirrer
- Container to collect drained water
- Clean towels to dry any spilled water

1. Turn the heating and cooling switches OFF.
2. Remove the water tank, empty any water, and set aside.
3. Turn the filter bypass to the “NOT THROUGH FILTERS” direction.
4. Press the hot water button and dispense hot water until no more hot water can be dispensed.
5. Unplug the power cord.

IMPORTANT: Do NOT proceed to step 6 until you’ve completed steps 4 and 5. There is a risk of scalding if you drain all the hot water from the drain on the bottom of the dispenser.

6. Remove the hot water drain plug from the bottom of the dispenser and drain all water. Reinstall plug.
7. Remove the cold water drain plug from the bottom of the dispenser and drain all water. Reinstall plug.



8. Plug in the power cord. Press the sparkling water button until no more sparkling water can be dispensed.
9. Pour 200g of citric acid crystals into the water tank and refill with water. Using a mixing stirrer, stir water until crystals have dissolved into water.
10. Reinstall the water tank onto its base. The dispenser will automatically begin filling the cold/soda, and hot water tanks.

NOTE: It will take approximately 2 water tanks to fill all internal tanks. Use the other 200g of citric acid crystals to prepare a second cleaning solution.

11. Allow cleaning solution to sit in internal tanks for 20 minutes.
12. Follow steps 4 through 8 to drain all the solution from the dispenser.
13. Fill the side water tank with fresh water, allow internal tanks to fill, then follow steps 4 through 8 to drain all rinse water from the dispenser.
14. Switch the bypass to the “THROUGH FILTERS” direction. Refill the water tank and reinstall. Allow internal tanks to fill completely.
15. Turn the heating and cooling switches ON.
16. Cleaning is complete.

Troubleshooting

| Problem | Possible causes | Solution |
|---|--|---|
| Hot water does not dispense. | A. Water tank doesn't have enough water. B. Water source is not on. C. Filter element is blocked. | A. Add water to water tank. B. Plumbed-in version: turn on water supply. C. Replace filter element. |
| Hot water is not hot enough. | A. Too much hot water has been dispensed in a short amount of time. B. Heating is not complete. C. Power supply or heating switch is off. | A. Allow heating to finish. B. Ensure dispenser is connected to a working outlet and the heating switch is ON. |
| Room temperature water does not dispense. | A. Water tank doesn't have enough water. B. Water source is not on. C. Filter element is blocked. | A. Add water to water tank. B. Plumbed-in version: turn on water supply. C. Replace filter element. |
| Cold water does not dispense. | A. Water tank doesn't have enough water. B. Water source is not on. C. Filter element is blocked. D. Cold tank is frozen. | A. Add water to water tank. B. Plumbed-in version: turn on water supply. C. Replace filter element. D. Unplug dispenser and let sit for 6 hours to thaw. |
| Cold water is not cold enough. | A. Too much cold water has been dispensed in a short amount of time. B. Cooling is not yet complete. C. Power supply or cooling switch is off. D. If water hasn't been dispensed in 4 hours, dispenser enters energy-saving mode. | A. Allow cooling to finish. B. Ensure dispenser is connected to a working outlet and the cooling switch is ON. C. Dispense any type of water from dispenser and it will exit energy-saving mode. Then wait for cooling to complete. |
| Sparkling water does not dispense. | A. Cold tank is frozen. B. CO2 cylinder is not connected or it is empty. C. The pressure in the sparkling water tank is too high. D. Too much sparkling water has been dispensed in a short amount of time. | A. Unplug dispenser and let sit for 6 hours to thaw. B. Replace CO2 cylinder. Optionally, remove CO2 cylinder and dispense 10 oz. of sparkling water. After the booster pump stops pumping water, reinstall the CO2 cylinder. C. If an external CO2 cylinder with adapter is being used, reduce the input CO2 pressure. D. Wait for pump to refill sparkling water tank. |
| Water doesn't taste good. | A. Filter element has expired. B. Dispenser has not been used for a long time. C. Filter bypass is not pointing down or in the "THROUGH FILTERS" direction. | A. Replace filter element. B. Clean the tanks, using citric acid crystals. C. Ensure the filter bypass is pointing down or in the "THROUGH FILTERS" direction. |

If the above solutions don't solve the problem, there may be internal parts that are damaged or need to be replaced. Please contact after-sales service for assistance.

Warranty

Brio ("Vendor") warrants to the original purchaser of the Brio Water Coolers (the "Product"), and to no other person, that if the Product is assembled and operated in accordance with the printed instructions accompanying it, then for a period of one (1) year from the date of purchase, all parts in the Product shall be free from defects in material and workmanship. This Limited Warranty shall be limited to repair or replacement of parts, which prove defective under normal use and service and which Vendor shall determine in its reasonable discretion upon examination to be defective. To take advantage of this Limited Warranty, please follow these steps:

1. Please retain your sales slip or invoice, as Vendor may require reasonable proof of your date of purchase.
2. Contact Vendor's Customer Service Department using the contact information listed below.
3. Return parts to Vendor, per Vendor's instructions, at your cost and expense.
4. Upon receipt by Vendor, Vendor shall advise you in writing whether a defect covered by this Limited Warranty exists in any returned part and whether your claim has been approved or denied.
5. Upon Vendor's approval of your claim, Vendor will replace such defective part without charge to you.

WHAT THIS LIMITED WARRANTY DOES NOT COVER: This Limited Warranty does not cover any failures or operating difficulties of the Product due to accident, abuse, misuse, alteration, misapplication, improper installation or improper maintenance or service by you or any third party, or failure to perform normal and routine maintenance on the Product, as set out in the User's Manual. In addition, this Limited Warranty does not cover damages to the finish, such as scratches, dents, discoloration or rust after purchase.

This Limited Warranty is the only express warranty given on the Product and is in lieu of all other express warranties. Vendor disclaims all warranties for products that are purchased from seller other than authorized retailers or distributors. THIS LIMITED WARRANTY RESTRICTS THE DURATION OF ANY AND ALL IMPLIED WARRANTIES, INCLUDING WITHOUT LIMITATION, THE IMPLIED WARRANTY OF MERCHANTABILITY AND FITNESS FOR A PARTICULAR PURPOSE TO THE ONE (1) YEAR TERM OF THIS LIMITED WARRANTY. UPON THE EXPIRATION OF THE ONE (1) YEAR TERM OF THIS LIMITED WARRANTY, VENDOR DISCLAIMS ANY AND ALL IMPLIED WARRANTIES, INCLUDING WITHOUT LIMITATION THE IMPLIED WARRANTIES OF MERCHANTABILITY AND FITNESS FOR A PARTICULAR PURPOSE, THE PRODUCT BEING THUS SOLD AS-IS, WITH ALL FAULTS. FURTHER, VENDOR SHALL HAVE NO LIABILITY WHATSOEVER TO PURCHASER OR ANY THIRD PARTY FOR ANY SPECIAL, INDIRECT, PUNITIVE, INCIDENTAL, OR CONSEQUENTIAL DAMAGES. OTHER THAN THIS LIMITED WARRANTY, THERE ARE NO WARRANTIES WHICH EXTEND BEYOND THE DESCRIPTION ON THE FACE HEREOF. Vendor assumes no responsibility for any defects caused by third parties. This Limited Warranty gives you specific legal rights, and you may have other rights which vary from state to state. State law may also override statements in this Limited Warranty regarding the restriction on the duration of implied warranties. Some jurisdictions do not allow exclusion or limitation of special, incidental or consequential damages, or limitations on how long a warranty lasts, so the above exclusion and limitations may not apply to you.



WWW.BRIOWATER.COM

©2024 Brio Water Technology, Inc.