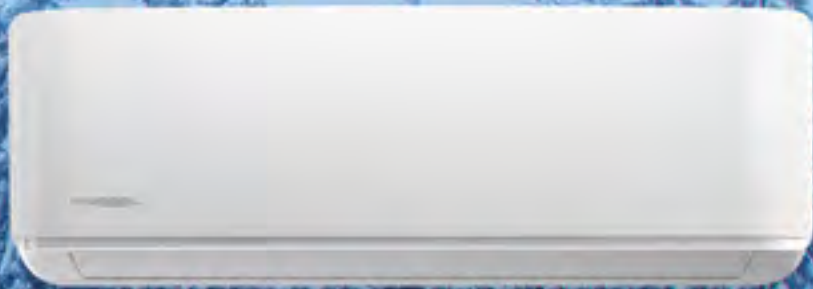




**MRCOOL®**

COMFORT MADE SIMPLE



# PRODUCT CATALOG

Residential Heating & Air Conditioning



# Why **MRCOOL?**

MRCOOL<sup>®</sup> ductless mini-split air conditioners and heat pumps are the cutting edge of what modern, flexible fabrication can produce. These air conditioners rely on state-of-the-art manufacturing processes with advanced designs to deliver high efficiency air comfort anywhere you need it.

# TABLE OF CONTENTS

Product Name	Page No.
Do-It-Yourself Single Zone	1-2
Do-It-Yourself Multi-Zone	3-5
Advantage	7-9
Olympus E Star	11-12
Olympus Hyper Heat	13-14
Olympus Multi-Zone	15-16
Signature Series - Package Heat Pump	17-18
Signature Series - Air Conditioner	19-20
Signature Series - Package Gas Electric	21-22
Signature Series - Air Conditioner Condenser	23-24
Signature Series - Heat Pump Condenser	25-26
Signature Series - Multi-Position Air Handler with TXV	27-28
Signature Series - Evaporator Coils	29-30
Signature Series - 80% AFUE Gas Furnace	31-32
Signature Series - 95% AFUE Gas Furnace	33-34
Signature Series - Electric Furnace Modular Air System	35-36
ProDirect™ Series - 14 SEER AC Condenser	37-38
ProDirect™ Series - 14 SEER Split System Air Handler	39-40
GeoCool® - Geothermal Heat Pump	41-44
Universal Series - Condenser	45-46
Universal Series - Cooling Only Condenser	47-48
Universal Series - A-Coils	49-50
Universal Series - High ESP Air Handler	51-52
Central Ducted System	53-54
U-Shaped Window Air Conditioner	55-56
MRBREEZE - Bladeless Fan	57-58
HVLS Fan	59-60
No Vac® Quick Connect® Line Set	61
DIY® Pre-Charged Line Set	62
Special Truckload Orders - Packaged Terminal	63-64
Accessories	65-66
SmartHVAC Ductless Ministat	66
Version Date	05-24-2022

\*All specifications are subject to change.



# Do-It-Yourself Single Zone

Our patented MRCOOL® Series heat pump is the only ductless mini-split system on the market specifically designed for amateur installation. Special tools or training are not necessary to install this high efficiency heat pump.



- ✓ Easy DIY\* Installation
- ✓ Smartphone App
- ✓ Easy Quick Connect®

- ✓ Leakage Detection
- ✓ Low Ambient Cooling
- ✓ DC Inverter

- ✓ Gold Fin® Condenser
- ✓ Follow Me®



\*Pat: <https://www.mrcool.com/mrcool-patents/>

MODEL NO.	Indoor Unit Outdoor Unit	DIY-12-HP-WMAH-115C25 DIY-12-HP-C-115C25	DIY-18-HP-WMAH-230C25 DIY-18-HP-C-230C25	DIY-24-HP-WMAH-230C25 DIY-24-HP-C-230C25	DIY-36-HP-WMAH-230C25 DIY-36-HP-C-230C25
-----------	-----------------------------	---	---	---	---

### Capacity & Performance

<b>Cooling Capacity</b>	Btu/h	12000	18000	23000	36000
<b>SEER</b>	Btu/w	22.0	22.0	20.5	18.0
<b>Heating Capacity</b>	Btu/h	12000	18000	25000	36000
<b>HSPF4</b>	Btu/w	11.5	11.5	10.5	12
<b>HSPF5</b>	Btu/w	9	9	9	9
<b>Coverage Area (Heat/Cool)</b>	sq. ft.	Up to 500	Up to 750	Up to 1000	Up to 1500
<b>Indoor Noise Level (Hi/Mi/Lo)</b>	dB(A)	37/31/23.5	44.5/37/31	48.5/43.5/33	52/45/34
<b>Outdoor Noise Level</b>	dB(A)	53.5	58.5	60	63

### Electrical Parts

<b>Power Supply</b>	V ~ Hz.Ph	115v~60Hz,1ph	208-230~60,1Ph	208-230~60,1Ph	208-230~60,1Ph
<b>Minimum Circuit Ampacity</b>	A	19.0	18.0	22.0	28.0
<b>Maximum Fuse (Breaker)</b>	A	25.0	30.0	35.0	35.0

### Dimensions & Weight

<b>Net Dimension (WxDxH)</b>	<b>Indoor</b>	inch mm	31.57 x 7.44 x 11.69 802 x 189 x 297	42.52 x 8.90 x 13.19 1080 x 226 x 335	42.52 x 8.90 x 13.19 1080 x 226 x 335	49.57 x 11.10 x 14.25 1259 x 282 x 362
	<b>Outdoor</b>	inch mm	30.12 x 11.93 x 21.85 765 x 303 x 555	35.04 x 13.46 x 26.50 890 x 342 x 673	37.24 x 16.14 x 31.89 946 x 410 x 810	37.24 x 16.14 x 31.89 946 x 410 x 810
<b>Packing Dimension (WxDxH)</b>	<b>Indoor</b>	inch mm	36.02 x 16.34 x 13.98 915 x 415 x 355	49.09 x 19.57 x 16.93 1247 x 497x 430	49.09 x 19.57 x 16.93 1247 x 497x 430	56.69 x 21.26 x 19.09 1440 x 540 x 485
	<b>Outdoor</b>	inch mm	35.04 x 15.75 x 27.56 890 x 400 x 700	40.55 x 18.11 x 29.13 1030 x 460 x 740	42.91 x 19.88 x 35.04 1090 x 505 x 890	42.91 x 19.88 x 35.04 1090 x 505 x 890
<b>Net/Gross Weight</b>	<b>Indoor</b>	lbs kg	24.03/34.17 10.9/15.5	34.61/56.00 15.7/25.4	35.27/60.19 16/27.3	47.84/78.26 21.7/35.5
	<b>Outdoor</b>	lbs kg	65.70/85.3 29.8/38.7	94.36/117.5 42.8/53.3	125.22/163.6 56.8/74.2	147.27/186.3 66.8/84.5

### Refrigerant & Piping

<b>Refrigerant R-410A</b>	oz	38.1	56.44	81.13	111.1
<b>Piping Size Liquid side/Gas side</b>	inch / mm	1/4"-1/2" / 6.35 x 12.7	1/4"-1/2" / 6.35 x 12.7	3/8"-5/8" / 9.52 x 15.9	3/8"-5/8" / 9.52 x 15.9

\*If the original owner does not register the unit, the warranty defaults to the standard 5 year parts, 7 year compressor warranty.

\*\*The original, registered owner must be enrolled in the MrCool Care Program every year in order to qualify for the 7 year full unit replacement for compressor failure and lifetime compressor replacement.



\*Data provided by AHRI

Notes:



# Do-It-Yourself Multi-Zone

The MRCOOL® patented DIY® Multi-Zone Series ductless mini-split is the only whole-home mini-split solution that you can install yourself. Simple, easy air comfort now in up to five zones.



JUST ASK  
amazon alexa

works with the  
Google Assistant



Pre-Charged  
Line Set  
See Pg 62

\*Pat: <https://www.mrcool.com/mrcool-patents/>

- ✓ Easy DIY® Installation
- ✓ Smartphone App
- ✓ Easy Quick Connect®
- ✓ DIY® Pro® Cable
- ✓ Leakage Detection
- ✓ DC Inverter
- ✓ Gold Fin® Condenser
- ✓ Follow Me®
- ✓ Multi-Room Comfort
- ✓ Low Ambient Cooling

HEAT PUMP CONDENSER-Outdoor Model		DIY-MULTI2-18HP230C	DIY-MULTI3-27HP230C	DIY-MULTI4-36HP230C	DIY-MULTI5-48HP230C
<b>Maximum Number of Zones</b>	<b>UNIT</b>	2	3	4	5
SEER	Btu/w	21	22	21.5	20.5
Power Supply	V~Hz.ph	208-230~60,1	208-230~60,1	208-230~60,1	208-230~60,1
Minimum Circuit (Disconnect)	A	18.0	26.0	27.0	40.0
Maximum Fuse (Breaker)	A	25.0	40.0	45.0	60.0

**DIMENSIONS & WEIGHT**

Net Dimension (WxDxH)	inch	35.04 x 13.46 x 26.50	37.24 x 16.14 x 31.89	37.24 x 16.14 x 31.89	37.48 x 16.34 x 52.48
Packing Dimension (WxDxH)	inch	40.94 x 17.64 x 29.33	42.91 x 19.88 x 35.04	42.91 x 19.88 x 35.04	43.11 x 19.49 x 54.33
Net Weight	lbs	100.53	139.99	170.42	222.89
Gross Weight	lbs	111.11	157.19	187.83	254.41

**REFRIGERANT & PIPING**

Refrigerant R-410A	oz	R-410A/65.26	R-410A/91.71	R-410A/134.04	R-410A/162.00
Piping Size Liquid Side/Gas Side	inch	1/4"-3/8"	1/4"-3/8"	*1/4"-3/8"	*1/4"-3/8"

\* If you are using a 24K or greater capacity Air Handler with a 4-zone or 5-zone condenser, you will need to install the included 1/2" line set adapter kit to the outside unit, before the line set can be connected. This requires you to replace both of the connected couplings that are on port A of the outside unit, so the air handler can be connected.

WALL MOUNTED-Indoor Model	Indoor Unit	DIY-09-HP-WMAH-230C25	DIY-12-HP-WMAH-230C25	DIY-18-HP-WMAH-230C25	DIY-24-HP-WMAH-230C25	DIY-36-HP-WMAH-230C25
---------------------------	-------------	-----------------------	-----------------------	-----------------------	-----------------------	-----------------------

**ELECTRICAL PARTS**

Power Supply	V~Hz.ph	208-230~60,1	208-230~60,1	208-230~60,1	208-230~60,1	208-230~60,1
Minimum Circuit (Disconnect)	A	3.0	3.0	3.0	3.0	3.0
Maximum Fuse (Breaker)	A	15.0	15.0	15.0	15.0	15.0

**DIMENSIONS & WEIGHT**

Net Dimension (WxDxH)	inch	31.57 x 7.44 x 11.69	31.57 x 7.44 x 11.69	42.52 x 8.90 x 13.19	42.52 x 8.90 x 13.19	49.57 x 11.10 x 14.25
Packing Dimension (WxDxH)	inch	36.02 x 16.34 x 13.98	36.02 x 16.34 x 13.98	49.09 x 19.57 x 16.93	49.09 x 19.57 x 16.93	56.69 x 21.26 x 19.09
Net Weight	lbs	23.81	23.81	34.61	35.27	47.84
Gross Weight	lbs	34.39	34.39	56.00	60.19	78.26



\*If the original owner does not register the unit, the warranty defaults to the standard 5 year parts, 7 year compressor warranty.

\*\*The original, registered owner must be enrolled in the MrCool Care Program every year in order to qualify for the 7 year full unit replacement for compressor failure and lifetime compressor replacement.

Notes:

---



---



---



---



---

## DIY-MULTI2-18HP230C (18K) - 2 COMBINATIONS

### TWO UNITS

9K + 9K      9K + 12K

## DIY-MULTI3-27HP230C (27K) - 7 COMBINATIONS

### TWO UNITS

9K + 12K      12K + 12K  
9K + 18K      12K + 18K\*

### THREE UNITS

9K + 9K + 9K      9K + 9K + 12K\*  
9K + 12K + 12K\*

## DIY-MULTI4-36HP230C (36K) - 15 COMBINATIONS

### TWO UNITS

9K + 24K      18K + 18K  
12K + 18K      12K + 24K

### THREE UNITS

9K + 9K + 9K      9K + 9K + 12K  
9K + 12K + 18K\*      9K + 9K + 18K  
9K + 9K + 24K\*      9K + 12K + 12K  
12K + 12K + 12K      12K + 12K + 18K\*

### FOUR UNITS

9K + 9K + 9K + 9K  
9K + 9K + 9K + 12K\*  
9K + 9K + 12K + 12K\*

## DIY-MULTI5-48HP230C (48K) - 22 COMBINATIONS

### TWO UNITS

18K + 24K      24K + 24K  
9K + 36K      12K + 36K  
18K + 36K\*

### THREE UNITS

12K + 12K + 18K      12K + 18K + 18K  
12K + 12K + 24K      18K + 18K + 18K\*  
9K + 9K + 36K\*

### FOUR UNITS

9K + 9K + 9K + 12K  
9K + 9K + 9K + 18K  
9K + 9K + 12K + 12K  
9K + 9K + 12K + 18K  
12K + 12K + 12K + 12K  
9K + 12K + 12K + 12K  
12K + 12K + 12K + 18K\*  
9K + 9K + 18K + 18K\*  
9K + 9K + 9K + 24K\*  
9K + 9K + 12K + 24K\*

### FIVE UNITS

9K + 9K + 9K + 9K + 9K  
9K + 9K + 9K + 9K + 12K

*\*If all indoor units (handlers) run simultaneously, their combined BTU output will not exceed the BTU rating of the outdoor unit (condenser).*

Notes:

---



---



---



---

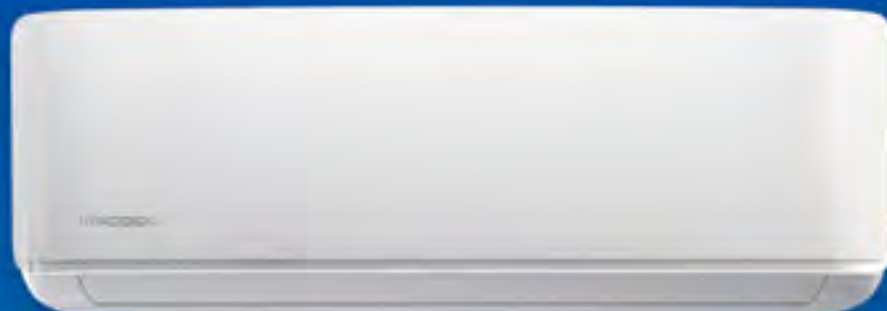


---



# Comfort made simple

Simple, easy air comfort in up to five zones.



The MRCOOL® Patented DIY® Series ductless mini-splits are the only whole-home mini-split solution that you can install yourself. No special tools, equipment, or training are required.

- ✓ Easy DIY® Installation
- ✓ Smartphone App
- ✓ Easy Quick Connect®
- ✓ DIY® Pro® Cable
- ✓ Leakage Detection
- ✓ DC Inverter
- ✓ Gold Fin® Condenser
- ✓ Follow Me™
- ✓ Multi-Room Comfort
- ✓ Low Ambient Cooling





## Advantage

This system is meant to be installed by a qualified HVAC technician. The newly designed 3rd generation Advantage Series, with improved efficiency ratings up to 19 SEER, delivers high performance comfort from the moment it's activated. The competitive price makes it a favorite among consumers that's tough to beat.



- ✓ Timer
- ✓ Leakage Detection
- ✓ Follow Me®

- ✓ Gold Fin® Condenser
- ✓ Smartphone App
- ✓ Low Ambient Cooling

- ✓ Quiet Running
- ✓ DC Inverter

MODEL NO.	Indoor Unit Outdoor Unit	A-09-HP-WMAH-115C A-09-HP-C-115C	A-12-HP-WMAH-115C A-12-HP-C-115C	A-09-HP-WMAH-230C A-09-HP-C-230C	A-12-HP-WMAH-230C A-12-HP-C-230C
-----------	-----------------------------	-------------------------------------	-------------------------------------	-------------------------------------	-------------------------------------

**CAPACITY & PERFORMANCE**

Cooling Capacity	Btu/h	9000	12000	9000	12000
SEER	Btu/w	20.5	20	21.5	20.5
EER	Btu/w	12.5	10.3	12.6	10.8
Heating Capacity	Btu/h	10000	12000	10000	12000
HSPF4	Btu/w	10.0	10.5	10	10
HSPF5	Btu/w	7.8	8.4	8.3	8
Indoor noise level (Hi/Mi/Lo)	dB(A)	36.5/31.0/22.0	41.5/30.5/26	40.5/30.5/24	37/30/22.5

**ELECTRICAL PARTS**

Power Supply	V~Hz,ph	115v~60Hz,1ph	115v~60Hz,1ph	208/230v~60Hz,1ph	208/230v~60Hz,1ph
<b>Indoor</b>					
Minimum Circuit Ampacity	A	3.0	3.0	3.0	3.0
Maximum Fuse (Breaker)	A	15.0	15.0	15.0	15.0
<b>Outdoor</b>					
Minimum Circuit Ampacity	A	20.0	18.5	12.0	15.0
Maximum Fuse (Breaker)	A	30.0	25.0	15.0	15.0

**DIMENSIONS & WEIGHT**

Net Dimension (WxDxH)	Indoor	inch	28.43 x 7.36 x 11.42	31.57 x 7.44 x 11.69	28.43 x 7.36 x 11.42	31.57 x 7.44 x 11.69
	Outdoor	inch	30.12 x 11.93 x 21.85	30.12 x 11.93 x 21.85	30.12 x 11.93 x 21.85	30.12 x 11.93 x 21.85
Packing Dimension (WxDxH)	Indoor	inch	31.10 x 10.63 x 14.57	34.45 x 11.22 x 14.76	31.10 x 10.63 x 14.57	34.45 x 11.22 x 14.76
	Outdoor	inch	34.84 x 14.76 x 23.82	34.84 x 14.76 x 23.82	34.84 x 14.76 x 23.82	34.84 x 14.76 x 23.82
Net Weight	Indoor	lbs	16.98	19.84	16.98	18.96
	Outdoor	lbs	57.76	62.17	55.11	59.30
Gross Weight	Indoor	lbs	22.7	24.25	22.27	24.91
	Outdoor	lbs	63.49	67.68	60.85	64.82

**REFRIGERANT & PIPING**

Refrigerant R-410A	oz	R-410A/25.39	R-410A/28.57	R-410A/25.39	R410A/28.57
Piping Size Liquid Side/Gas Side	inch	1/4"-3/8"	1/4"-1/2"	1/4"-3/8"	1/4"-1/2"

**NATIONAL AVERAGE ANNUAL OPERATING COSTS**

Cooling Cost*	\$	63	83	66	83
Heating Cost*	\$	211	267	200	267



Notes:

---



---



---



---

Table of Contents

MODEL NO.	Indoor Unit Outdoor Unit	A-18-HP-WMAH-230C A-18-HP-C-230C	A-24-HP-WMAH-230C A-24-HP-C-230C	A-36-HP-WMAH-230C A-36-HP-C-230C
-----------	-----------------------------	-------------------------------------	-------------------------------------	-------------------------------------

**CAPACITY & PERFORMANCE**

Cooling Capacity	Btu/h	18000	24000	36000
SEER	Btu/w	19	18	17.5
EER	Btu/w	10.5	9	8.5
Heating Capacity	Btu/h	18800	24000	36000
HSPF4	Btu/w	10.0	9.8	12
HSPF5	Btu/w	8.3	8	8
Indoor noise level (Hi/Mi/Lo)	dB(A)	43.5/34.5/30.0	45.5/39.5/35	56.5/54.5/40

**ELECTRICAL PARTS**

Power Supply	V~Hz.ph	208-230V~60Hz, 1Ph	208-230V~60Hz, 1Ph	208-230V~60Hz, 1Ph
<b>Indoor</b>				
Minimum Circuit Ampacity	A	3.0	3.0	3.0
Maximum Fuse	A	15.0	15.0	15.0
<b>Outdoor</b>				
Minimum Circuit Ampacity	A	15.0	19.0	28.0
Maximum Fuse	A	20.0	30.0	35.0

**DIMENSIONS & WEIGHT**

Net Dimension	Indoor	inch	37.99 x 8.46 x 12.56	42.52 x 8.90 x 13.19	49.57 x 11.10 x 14.25
	Outdoor	inch	31.69 x 12.99 x 21.81	35.04 x 13.46 x 26.50	37.24 x 16.14 x 31.89
Packing Dimension	Indoor	inch	41.14 x 12.01 x 15.94	45.47 x 16.34 x 12.40	52.76 x 17.72 x 15.08
	Outdoor	inch	37.00 x 16.14 x 23.82	40.55 x 17.24 x 28.74	42.91 x 19.69 x 34.84
Net Weight	Indoor	lbs	23.81	29.98	40.34
	Outdoor	lbs	73.85	97.88	150.13
Gross Weight	Indoor	lbs	31.53	38.58	52.69
	Outdoor	lbs	79.81	104.50	158.95

**REFRIGERANT & PIPING**

Refrigerant R-410A	oz	R-410A/47.61	R-410A/62.8	R-410A/119.9
Piping Size Liquid Side/Gas Side	inch	1/4"-1/2"	3/8"-5/8"	3/8"-5/8"

**NATIONAL AVERAGE ANNUAL OPERATING COSTS**

Cooling Cost*	\$	125	186	297
Heating Cost*	\$	380	534	761



\*Data Provided by AHRI





## OLYMPUS E Star™ Series

The MRCOOL® Olympus Energy Star Series ductless heat pump is the air comfort system you need to ensure your home stays comfortable, cool, and cost effective for years to come. This high quality ductless heat pump is energy efficient, packed with great features, and priced to meet most household budgets. It must be installed by a qualified HVAC technician.



- ✓ Leakage Detection
- ✓ DC Inverter
- ✓ Low Ambient Cooling

- ✓ Follow Me®
- ✓ Quiet Running
- ✓ Gold Fin® Condenser

- ✓ Smartphone App



MODEL NO.	Indoor Unit Outdoor Unit	O-09-WMAH-230B O-ES-09-HP-C-230B	O-12-WMAH-230B O-ES-12-HP-C-230B	O-18-WMAH-230B O-ES-18-HP-C-230B	O-24-WMAH-230B O-ES-24-HP-C-230B
-----------	-----------------------------	-------------------------------------	-------------------------------------	-------------------------------------	-------------------------------------

**CAPACITY & PERFORMANCE**

Cooling Capacity	Btu/h	9000	12000	18000	24000
SEER	Btu/w	25.5	23.2	22.6	22
Heating Capacity	Btu/h	10000	12000	19000	25000
HSPF 4	Btu/w	12.2	13.2	12	12
Indoor air flow	CFM	335.29/229.41/176.47	335.29/229.41/176.47	523.53/376.47/305.88	611.18/414.12/318.82
Indoor noise level (Hi/Mi/Lo)	dB(A)	38/34/23	36/33.5/22.5	46.5/43/32.5	44/39.5/34

**ELECTRICAL PARTS**

Power Supply	V~Hz,ph	208/230v~60Hz,1ph	208/230v~60Hz,1ph	208/230v~60Hz,1ph	208/230v~60Hz,1ph
Indoor Minimum Circuit (Disconnect)	A	3.0	3.0	3.0	3.0
Indoor Maximum Fuse (Breaker)	A	15.0	15.0	15.0	15.0
Outdoor Minimum Circuit (Disconnect)	A	13.0	13.0	19.0	22.0
Outdoor Maximum Fuse (Breaker)	A	15.0	15.0	30.0	30.0

**DIMENSIONS & WEIGHT**

Net Dimension (WxDxH)	Indoor	inch	31.30 x 8.86 x 11.61	31.30 x 8.86 x 11.61	37.99 x 9.41 x 12.56	44.88 x 10.83 x 14.57
	Outdoor	inch	30.12 x 11.93 x 21.85	30.12 x 11.93 x 21.85	35.04 x 13.46 x 26.50	37.24 x 16.14 x 31.89
Packing Dimension (WxDxH)	Indoor	inch	34.25 x 14.57 x 12.01	34.25 x 14.57 x 12.01	41.14 x 15.75 x 12.80	48.43 x 17.91 x 13.98
	Outdoor	inch	34.92 x 13.27 x 24.02	34.92 x 13.27 x 24.02	39.17 x 15.67 x 29.13	42.91 x 19.69 x 34.84
Net Weight	Indoor	lbs	22.71	22.93	27.12	43.65
	Outdoor	lbs	63.71	63.71	94.36	124.78
Gross Weight	Indoor	lbs	28.88	28.88	35.71	54.89
	Outdoor	lbs	69.00	69.00	100.97	134.92

**REFRIGERANT & PIPING**

Refrigerant R-410A	oz	R-410A/38.1	R-410A/38.1	R-410A/56.44	R410A/82.89
Piping Size Liquid Side/Gas Side	inch	1/4"-3/8"	1/4"-1/2"	1/4"-1/2"	3/8"-5/8"

**NATIONAL AVERAGE ANNUAL OPERATING COSTS**

Cooling Cost*	\$	50	70	108	148
Heating Cost*	\$	188	247	363	505



\*Data Provided by AHRI

Notes:

---



---



---

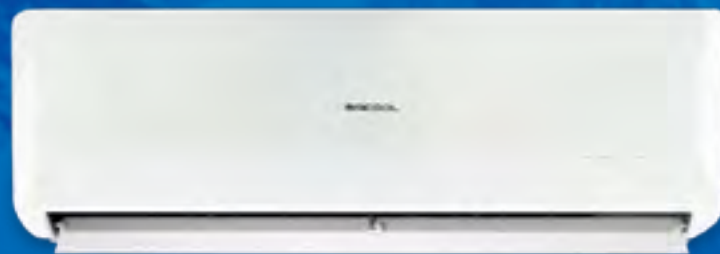


---



# OLYMPUS HYPER HEAT SERIES

The MRCOOL® Olympus Hyper Heat Series ductless mini-split heat pump is the air comfort system you need to ensure your home stays cost effective and comfortable all year. This system uses hyper-heat technology to ensure efficient and effective heating performance when outdoor temperatures become bitterly cold. This high quality ductless heat pump is energy efficient, packed with great features, and priced to meet most household budgets. It must be professionally installed by a qualified HVAC technician.



- ✓ Smartphone App
- ✓ Leakage Detection
- ✓ Enhanced Heating

- ✓ Follow Me®
- ✓ Quiet Running
- ✓ Gold Fin® Condenser

- ✓ DC Inverter





MODEL NO.	Indoor Unit Outdoor Unit	O-09-WMAH-230B O-HH-09-HP-C-230B	O-12-WMAH-230B O-HH-12-HP-C-230B	O-18-WMAH-230B O-HH-18-HP-C-230B	O-24-WMAH-230B O-HH-24-HP-C-230B
-----------	-----------------------------	-------------------------------------	-------------------------------------	-------------------------------------	-------------------------------------

**CAPACITY & PERFORMANCE**

Cooling Capacity	Btu/h	9000	12000	18000	24000
SEER	Btu/w	28.1	25.5	21.5	21.5
Heating Capacity	Btu/h	11800	12000	18000	29000
HSPF4		13	13	13	12
Indoor noise level (Hi/Mi/Lo)	dB(A)	38/33.5/23.5	38/33.5/23.5	46/42/24	46/39/34
Outdoor noise level	(dB(A)	54.5	56	59	62

**ELECTRICAL PARTS**

Power Supply	V~Hz.ph	208/230v~60Hz, 1ph	208/230v~60Hz, 1ph	208/230v~60Hz, 1ph	208/230v~60Hz, 1ph
Indoor Minimum Circuit (Disconnect)	A	3.0	3.0	3.0	3.0
Indoor Maximum Fuse (Breaker)	A	15.0	15.0	15.0	15.0
Outdoor Minimum Circuit (Disconnect)	A	15.0	15.0	16.0	25.0
Outdoor Maximum Fuse (Breaker)	A	15.0	15.0	25.0	35.0

**DIMENSIONS & WEIGHT**

Net Dimension (WxDxH)	Indoor	inch	31.30 x 8.86 x 11.61	31.30 x 8.86 x 11.61	37.99 x 9.41 x 12.56	44.88 x 10.83 x 14.57
	Outdoor	inch	31.69 x 12.99 x 21.81	31.69 x 12.99 x 21.81	35.04 x 13.46 x 26.50	37.24 x 16.14 x 31.89
Packing Dimension (WxDxH)	Indoor	inch	34.25 x 14.57 x 12.01	34.25 x 14.57 x 12.01	41.14 x 15.75 x 12.80	48.43 x 17.91 x 13.98
	Outdoor	inch	36.02 x 14.57 x 24.21	36.02 x 14.57 x 24.21	39.17 x 15.67 x 29.13	42.91 x 19.69 x 34.84
Net Weight	Indoor	lbs	22.71	22.93	27.12	43.65
	Outdoor	lbs	74.07	73.63	100.97	134.48
Gross Weight	Indoor	lbs	28.88	28.88	35.71	54.89
	Outdoor	lbs	80.25	79.37	108.03	144.40

**REFRIGERANT & PIPING**

Refrigerant R-410A	oz	R-410A/41.62	R-410A/41.62	R-410A/65.2	R410A/91.7
Piping Size Liquid Side/Gas Side	inch	1/4"-3/8"	1/4"-1/2"	1/4"-1/2"	3/8"-5/8"



\*Data Provided by AHRI

Notes:

---



---



---



---



---



---



---



---

Table of Contents



# OLYMPUS MULTI-ZONE SERIES

The MRCOOL® Olympus is the whole house mini-split solution. The Olympus offers aesthetically pleasing wall mounted and ceiling cassette units in up to 5 zones. This system is meant to be professionally installed by a qualified HVAC technician.



- ✓ Smartphone App\*
- ✓ Multi-Zone Flexibility
- ✓ Follow Me\*

- ✓ Versatile Installation
- ✓ Gold Fin® Condenser
- ✓ Superior Performance

- ✓ DC Inverter
- ✓ Energy Efficient

\*Excluding Cassettes and Ceiling Recessed.

# SPECIFICATION

# OLYMPUS MULTI-ZONE

HEAT PUMP CONDENSER - Outdoor Model		MULTI2-18HP230B	MULTI3-27HP230B	MULTI4-36HP230B	MULTI5-48HP230B
Max Number of Zones	UNIT	2	3	4	5
Power Supply	V~Hz.ph	208/230v~60Hz,1ph	208/230v~60Hz,1ph	208/230v~60Hz,1ph	208/230v~60Hz,1ph
SEER	Btu/w	22.5	23.8	23	22.4
Minimum Circuit Ampacity	A	18	24.5	25	40
Max. Fuse	A	25	35	45	50
Net Dimensions (WxDxH)	in	35.04 x 13.46 x 26.50	37.24 x 16.14 x 31.89	37.24 x 16.14 x 31.89	37.48 x 16.34 x 52.48
Packaging Dimensions (WxDxH)	in	40.55 x 17.24 x 29.53	42.91 x 19.69 x 34.45	42.91 x 19.69 x 34.84	43.11 x 19.49 x 58.27
Net Weight	lbs	100.31	139.77	169.09	225.53
Outdoor Gross Weight	lbs	108.69	150.57	181.44	256.62

WALL MOUNTED - Indoor Model		O-09-HP-WMAH-230A	O-12-HP-WMAH-230A	O-18-HP-WMAH-230A	O-24-HP-WMAH-230A
Power Supply	V~Hz.ph	208/230v~60Hz,1ph	208/230v~60Hz,1ph	208/230v~60Hz,1ph	208/230v~60Hz,1ph
Minimum Circuit Ampacity	A	3	3	3	3
Max. Fuse	A	15	15	15	15
Net Dimensions (WxDxH)	in	32.87 x 7.80 x 11.02	32.87 x 7.80 x 11.02	38.98 x 8.58 x 12.40	46.69 x 10.16 x 13.50
Packaging Dimensions (WxDxH)	in	35.83 x 10.63 x 14.17	35.83 x 10.63 x 13.98	41.93 x 11.81 x 15.75	49.80 x 16.53 x 14.17
Net Weight	lbs	18.51	18.51	25.13	37.70
Gross Weight	lbs	25.4	25.4	34.8	44.09
Piping Size Liquid Side/Gas Side	in	1/4"-3/8"	1/4"-1/2"	1/4"-1/2"	3/8"-5/8"

CEILING CASSETTE - Indoor Model		CASSETTE 12HP-230	CASSETTE 18HP-230	CASSETTE 24HP-230	
Power Supply	V~Hz.ph	208/230v~60Hz,1ph	208/230v~60Hz,1ph	208/230v~60Hz,1ph	
Minimum Circuit Ampacity	A	1.3	1.9	2.5	
Max. Fuse	A	15	15	15	
Net Dimensions (WxDxH)	in	22.44 x 22.44 x 10.24	22.44 x 22.44 x 10.24	33.07 x 33.07 x 8.07	
Packaging Dimensions (WxDxH)	in	26.06 x 26.06 x 12.48	26.06 x 26.06 x 12.48	35.43 x 35.43 x 8.86	
Net Weight	lbs	35.27	35.71	46.30	
Gross Weight	lbs	41.01	46.96	54.23	
Piping Size Liquid Side/Gas Side	in	1/4"-1/2"	1/4"-1/2"	3/8"-5/8"	

CEILING RECESSED - Indoor Model		DUCT 09HP-230	DUCT 12HP-230	DUCT 18HP-230	DUCT 24HP-230
Power Supply	V~Hz.ph	208/230v~60Hz,1ph	208/230v~60Hz,1ph	208/230v~60Hz,1ph	208/230v~60Hz,1ph
Minimum Circuit Ampacity	A	1.3	1.3	3	3
Max. Fuse	A	15	15	15	15
Net Dimensions (WxDxH)	in	27.56 x 19.92 x 7.87	27.56 x 19.92 x 7.87	34.65 x 26.53 x 8.26	43.31 X 20.47 X 9.80
Packaging Dimensions (WxDxH)	in	33.85 x 21.25 x 11.22	33.85 x 21.25 x 11.22	42.13 x 28.54 x 11.02	51.37 x 31.69 x 12.40
Net Weight	lbs	39.02	39.24	55.34	90.39
Gross Weight	lbs	48.28	48.50	67.02	105.82
Piping Size Liquid Side/Gas Side	in	1/4"-3/8"	1/4"-1/2"	1/4"-1/2"	3/8"-5/8"



\*Data Provided by AHRI

Table of Contents

[www.mrcool.com](http://www.mrcool.com)



## Package Heat Pump

A MRCOOL® packaged heat pump combines high-performance cooling and powerful heating in one convenient, easy-to-install system. These units are competitively priced and operate at 14 SEER efficiency. A MRCOOL® packaged heat pump will be a great solution for tough air comfort problems in a suburban home, commercial office space, condominium, seaside villa, or wherever else you desire.



- ✓ Easy Installation & Service
- ✓ Superior Performance
- ✓ Durable Build & Finish
- ✓ R-410A Refrigerant
- ✓ Antimicrobial Drain Pan
- ✓ Louvered Coil Guard
- ✓ Optional Electric Heat
- ✓ Compact Design

‡ Warranty provides for a total of 10 years of limited warranty coverage (Standard 5-year limited parts warranty plus an additional 5-year limited extended parts warranty; 15-year for heat exchanger where specified). Warranty must be registered online within 60 days of installation to qualify for extended coverage. Unregistered equipment defaults to 5-year coverage





## Package Air Conditioner

This 2-5 ton, 208/230 volt, R-410A refrigerant, MRCOOL® packaged air conditioner unit has a seasonal energy efficiency rating of 14 SEER, providing maximum comfort cooling. This unit provides cooling-only performance (this is NOT a heat pump).



- ✓ Easy Installation & Service
- ✓ Superior Performance
- ✓ Durable Build & Finish
- ✓ R-410A Refrigerant
- ✓ Antimicrobial Drain Pan
- ✓ Louvered Coil Guard
- ✓ System Protection
- ✓ Compact Design

† Warranty provides for a total of 10 years of limited warranty coverage (Standard 5-year limited parts warranty plus an additional 5-year limited extended parts warranty; 15-year for heat exchanger where specified). Warranty must be registered online within 60 days of installation to qualify for extended coverage. Unregistered equipment defaults to 5-year coverage



## Package Gas Electric

The MRCOOL® Gas and Electric Packaged Unit combines a high performance 14 SEER air conditioner with a powerful gas furnace to deliver the best air comfort possible in all weather conditions. Like all MRCOOL® products, this hybrid system is competitively priced, suitable for residential or commercial installation, and will run smoothly for years to come.



- ✓ Easy Installation & Service
- ✓ Quiet Running
- ✓ Durable Build & Finish
- ✓ R-410A Refrigerant
- ✓ Optional LP Kit
- ✓ Multi-Position Application
- ✓ 81% AFUE
- ✓ Compact Design

‡ Warranty provides for a total of 10 years of limited warranty coverage (Standard 5-year limited parts warranty plus an additional 5-year limited extended parts warranty; 15-year for heat exchanger where specified). Warranty must be registered online within 60 days of installation to qualify for extended coverage. Unregistered equipment defaults to 5-year coverage







## Up to 16 SEER Air Conditioner Condenser

This 1.5-5 ton, 208/230 volt, R-410A refrigerant, outdoor condenser has a seasonal energy efficiency rating of up to 16 SEER when paired with other MRCOOL® products. It provides maximum comfort cooling and high energy efficiency. This unit provides cooling only performance (this is NOT a heat pump).



- ✓ Easy Installation & Service
- ✓ Superior Performance
- ✓ Durable Build & Finish
- ✓ R-410A Refrigerant
- ✓ Antimicrobial Drain Pan
- ✓ CoolGuard® Corrosion Resistant Coil
- ✓ 81% AFUE
- ✓ Compact Design

‡Warranty provides for a total of 10 years of limited warranty coverage (Standard 5-year limited parts warranty plus an additional 5-year limited extended parts warranty; 15-year for heat exchanger where specified). Warranty must be registered online within 60 days of installation to qualify for extended coverage. Unregistered equipment defaults to 5-year coverage.





## Up to 15 SEER / 8.5 HSPF Heat Pump Condenser

The MRCOOL® 15 SEER Heat Pump Split System brings effortless comfort to your home. With its enhanced tube-and-fin coil design, it not only gives you total energy efficiency but gives you more bang for your buck. The affordability, quality, efficiency and comfort this condenser can provide is sure to give you peace of mind.



- ✓ Easy Installation & Service
- ✓ Energy Efficient
- ✓ Durable Build & Finish
- ✓ R-410A Refrigerant
- ✓ Optional Electric Heat
- ✓ CoolGuard® Corrosion Resistant Coil
- ✓ Superior Performance
- ✓ Compact Design

‡Warranty provides for a total of 10 years of limited warranty coverage (Standard 5-year limited parts warranty plus an additional 5-year limited extended parts warranty; 15-year for heat exchanger where specified). Warranty must be registered online within 60 days of installation to qualify for extended coverage. Unregistered equipment defaults to 5-year coverage.



## Multi-Position Air Handler for MAC\*16A and MHP\*A Condensers

The MRCOOL® Multi-Position Air Handler's design delivers dependable comfort and is built for reliability. The electronically commutated motor (ECM) delivers consistent airflow throughout the seasons, allowing you to remain comfortable at all times. When choosing a MRCOOL® Multi-Position Air Handler, you can rest assured your choice is energy-efficient.



- ✓ Mobile Home Approved
- ✓ Superior Performance
- ✓ Durable Build & Finish
- ✓ R-410A Refrigerant
- ✓ Multi-Position Application
- ✓ CoolGuard® Corrosion Resistant Coil
- ✓ Energy Efficient
- ✓ Compact Design

‡Warranty provides for a total of 10 years of limited warranty coverage (Standard 5-year limited parts warranty plus an additional 5-year limited extended parts warranty; 15-year for heat exchanger where specified). Warranty must be registered online within 60 days of installation to qualify for extended coverage. Unregistered equipment defaults to 5-year coverage.





## R-410A Multi-Position Cased Evaporator Coils

Our efficient and durable Cased Evaporator Coils provide the best solution for heat pumps and air conditioners for fast and flexible application. This Signature Series coil, when appropriately paired with a MRCOOL® Signature Series condenser and gas furnace or modular blower, can achieve efficiency ratings of up to 16 SEER.



- ✓ Flexible Installation
- ✓ Superior Performance
- ✓ Durable Build & Finish
- ✓ R-410A Refrigerant
- ✓ Multi-Position Application
- ✓ CoolGuard® Corrosion Resistant Coil
- ✓ Energy Efficient
- ✓ Compact Design

†Warranty provides for a total of 10 years of limited warranty coverage (Standard 5-year limited parts warranty plus an additional 5-year limited extended parts warranty; 15-year for heat exchanger where specified). Warranty must be registered online within 60 days of installation to qualify for extended coverage. Unregistered equipment defaults to 5-year coverage.



# SPECIFICATION

# MULTI-POSITION CASED EVAPORATOR COILS

MODEL NO.	Unit	MCDP0018ANPA	MCDP0024ANPA	MCDP0024BNPA	MCDP3036ANPA	MCDP3036BNPA	MCDP3036CNPA	MCDP0048BNPA	MCDP0048CNPA
Capacity	Btu/h	18000	24000	24000	36000	36000	36000	48000	48000
Indoor Dimension (WxDxH)	inch	17.5x26.12x14.12	17.5x26.12x14.12	17.5x26.12x14.12	17.5x26.12x16.12	17.5x26.12x16.12	21x26.12x16.12	21x26.12x20	21x26.12x20
Refrigerant Type		R-410A	R-410A	R-410A	R-410A	R-410A	R-410A	R-410A	R-410A
Liquid Side/Suction Side	inch	3/8"-7/8"	3/8"-7/8"	3/8"-7/8"	3/8"-7/8"	3/8"-7/8"	3/8"-7/8"	3/8"-7/8"	3/8"-7/8"
Gross Weight	lbs	44	44	49	58	57	60	72	71

MODEL NO.	Unit	MCDP5060CNPA	MCDP0060DNPA	MCHP24ANPA	MCHP24BNPA	MCHP30ANPA	MCHP30BNPA	MCHP36BNPA	MCHP48BNPA
Capacity	Btu/h	60000	60000	24000	24000	30000	30000	36000	48000
Indoor Dimension (WxDxH)	inch	24.5x26.12x23.62	24.5x26.12x23.62	26.5x21.5x14.5	26.5x21.5x17.5	31.5x21.5x14.5	26.5x21.5x17.5	26.5x21.5x17.5	31.5x21.5x17.5
Refrigerant Type		R-410A	R-410A	R-410A	R-410A	R-410A	R-410A	R-410A	R-410A
Liquid Side/Suction Side	inch	3/8"-7/8"	3/8"-7/8"	3/8"-7/8"	3/8"-7/8"	3/8"-7/8"	3/8"-7/8"	3/8"-7/8"	3/8"-7/8"
Gross Weight	lbs	85	84	45	49	55	53	48	60

MODEL NO.	Unit	MCHP48CNPA	MCHP51CNPA	MCHP60DNPA	MCVP0024ANPA	MCVP0024BNPA	MCVP0030ANPA	MCVP0030BNPA	MCVP0036BNPA
Capacity	Btu/h	48000	51000	60000	24000	24000	30000	30000	36000
Indoor Dimension (WxDxH)	inch	26.5x21.5x21	31.5x21.5x21	31.5x21.5x24.5	14.5x21x18.5	17.5x21x18.5	14.5x21x22.5	17.5x21x22.5	17.5x21x24.5
Refrigerant Type		R-410A	R-410A	R-410A	R-410A	R-410A	R-410A	R-410A	R-410A
Liquid Side/Suction Side	inch	3/8"-7/8"	3/8"-7/8"	3/8"-7/8"	3/8"-3/4"	3/8"-3/4"	3/8"-3/4"	3/8"-3/4"	3/8"-3/4"
Gross Weight	lbs	59	69	78	38	43	45	50	50

MODEL NO.	Unit	MCVP0048BNPA	MCVP0048CNPA	MCVP0049CNPA	MCVP0060CNPA
Capacity	Btu/h	48000	48000	49000	60000
Indoor Dimension (WxDxH)	inch	17.5x21x27.5	21x21x27.5	21x22x29.5	21x22x31.5
Refrigerant Type		R-410A	R-410A	R-410A	R-410A
Liquid Side/Suction Side	inch	3/8"-7/8"	3/8"-7/8"	3/8"-7/8"	3/8"-7/8"
Gross Weight	lbs	55	60	70	73



\*Data provided by AHRI

Notes:

---



---



---



---



---

Table of Contents

## 80% AFUE

---

# Gas Furnace

When harsh winter weather strikes, nothing compares to the warmth and safety a powerful and reliable gas furnace can provide. The MRCOOL<sup>®</sup> single stage 80% AFUE gas furnace is one of the best on the market.



- ✓ Quiet Running
- ✓ Superior Performance
- ✓ Durable Build & Finish
- ✓ Optional LP Kit
- ✓ Multi-Position Application
- ✓ 80% AFUE
- ✓ Energy Efficient
- ✓ Compact Design

‡Registered Warranty provides for a total of 10 years of limited warranty coverage (Standard 5-year limited parts warranty plus an additional 5-year limited extended parts warranty; Lifetime heat exchanger warranty when registered). Warranty must be registered online within 60 days of installation to qualify for extended coverage. Unregistered equipment defaults to 5-year coverage.

# SPECIFICATION

# GAS FURNACE - 80% AFUE

UPFLOW HORIZONTAL MODEL NO	Unit	MGM80SE045A3A	MGM80SE070B3A	MGM80SE090B4A	MGM80SE090C5A	MGM80SE110C5A	MGM80SE135D5A
Power Supply	Ph-V-Hz	1 - 120 - 60	1 - 120 - 60	1 - 120 - 60	1 - 120 - 60	1 - 120 - 60	1 - 120 - 60
Natural	Btu/h	44,000	66,000	88,000	88,000	110,000	132,000
Gas	Btu/h	35,200	52,800	70,400	70,400	88,000	105,600
Blower Size	inch	10 x 8	10 x 10	10 x 10	11.5 x 10	11.5 x 10	11 x 11
Temp. Rise Range	°F	15-45	40-70	35-65	30-60	35-65	30-60
Cabinet Size (WxDxH)	inch	14.5 x 28.375 x 33	17.5 x 28.375 x 33	17.5 x 28.375 x 33	21 x 28.375 x 33	21 x 28.375 x 33	24.5 x 28.375 x 33
Motor	HP	1/2	1/2	3/4	1	1	1
*Airflow Rate (0.5ESP)	CFM	1230	1245	1615	2060	2025	2240
Motor Speeds		5 speed	5 speed	5 speed	5 speed	5 speed	5 speed
Gas Type		NG (LP w/kit)	NG (LP w/kit)	NG (LP w/kit)	NG (LP w/kit)	NG (LP w/kit)	NG (LP w/kit)
Gas Connection Size	inch	1/2	1/2	1/2	1/2	1/2	1/2
Gross Weight	lbs	111	127	142	152	160	178

DOWNFLOW	Unit	MGD80SE045A3A	MGD80SE070B3A	MGD80SE090B4A	MGD80SE110C5A	
Power Supply	Ph-V-Hz	1 - 120 - 60	1 - 120 - 60	1 - 120 - 60	1 - 120 - 60	
Natural Gas	Input	Btu/h	44,000	66,000	88,000	110,000
	Output	Btu/h	35,200	52,800	70,400	88,000
Blower Size	inch	10 x 8	10 x 10	10 x 10	11.5 x 10	
Temp. Rise Range	°F	15-45	30-60	30-60	30-60	
Cabinet Size (WxDxH)	inch	14.5 x 28.375 x 33	17.5 x 28.375 x 33	17.5 x 28.375 x 33	21 x 28.375 x 33	
Motor	HP	1/2	1/2	3/4	1	
*Airflow Rate (0.5ESP)	CFM	1275	1280	1570	2165	
Motor Speeds		5 speed	5 speed	5 speed	5 speed	
Gas Type		NG (LP w/optional kit)	NG (LP w/optional kit)	NG (LP w/optional kit)	NG (LP w/optional kit)	
Gas Connection Size	inch	1/2	1/2	1/2	1/2	
Gross Weight	lbs	113	128	140	160	



\*Data provided by AHRI

Notes:

---



---



---



---



---



---



---



# 95% AFUE

---

## Gas Furnace

When harsh winter weather strikes, nothing compares to the warmth and safety a powerful and reliable gas furnace can provide. The MRCOOL® 95% AFUE gas furnace is very fuel-efficient, making it a great option for those who value energy savings.



- ✓ Quiet Running
- ✓ Superior Performance
- ✓ Durable Build & Finish
- ✓ Optional LP Kit
- ✓ Multi-Position Application
- ✓ 95% AFUE
- ✓ Energy Efficient
- ✓ Compact Design

‡Registered Warranty provides for a total of 10 years of limited warranty coverage (Standard 5-year limited parts warranty plus an additional 5-year limited extended parts warranty; Lifetime heat exchanger warranty when registered). Warranty must be registered online within 60 days of installation to qualify for extended coverage. Unregistered equipment defaults to 5-year coverage.

# SPECIFICATION

# GAS FURNACE - 95% AFUE

UPFLOW HORIZONTAL	Unit	MGM95SE045B3XA	MGM95SE070B3XA	MGM95SE090C4XA	MGM95SE110C5XA	MGM95SE135D5XA	
Power Supply	Ph-V-Hz	1 - 120 - 60	1 - 120 - 60	1 - 120 - 60	1 - 120 - 60	1 - 120 - 60	
Natural Gas	Input	Btu/h	44,000	66,000	88,000	110,000	132,000
	Output	Btu/h	42,000	64,000	85,000	106,000	128,000
Blower Size	Input	inch	10 x 8	10 x 8	10 x 10	11.5 x 10	11.5 x 10
Temp. Rise Range	°F	35-65	35-65	40-70	45-75	50-80	
Cabinet Size (WxDxH)	inch	17.5 x 28.5 x 33	17.5 x 28.5 x 33	21 x 28.5 x 33	21 x 28.5 x 33	24.5 x 28.5 x 33	
Motor	HP	1/2	1/2	3/4	1	1	
Airflow Rate (0.5ESP)	CFM	1215	1215	1560	2030	2225	
Motor Speeds		5 speed	5 speed	5 speed	5 speed	5 speed	
Gas Type		NG (Natural Gas)	NG (Natural Gas)	NG (Natural Gas)	NG (Natural Gas)	NG (Natural Gas)	
Gas Connection Size	inch	1/2	1/2	1/2	1/2	1/2	
Gross Weight	lbs	129	134	158	170	187	

# SPECIFICATION

DOWNFLOW	Unit	MGD95SE045B3XA	MGD95SE070B4XA	MGD95SE090C4XA	MGD95SE110C5XA	
Power Supply	Ph-V-Hz	1 - 120 - 60	1 - 120 - 60	1 - 120 - 60	1 - 120 - 60	
Natural Gas	Input	Btu/h	44,000	66,000	88,000	110,000
	Output	Btu/h	42,000	64,000	85,000	106,000
Blower Size	inch	10 x 8	11.5 x 10	10 x 10	11 x 11	
Temp. Rise Range	°F	25-55	25-55	40-70	40-70	
Cabinet Size (WxDxH)	inch	17.5 x 28.5 x 33	17.5 x 28.5 x 33	21 x 28.5 x 33	21 x 28.5 x 33	
Motor	HP	1/2	3/4	3/4	1	
Airflow Rate (0.5ESP)	CFM	1230	1585	1570	2060	
Motor Speeds		4 low, med, med/high, high	4 low, med, med/high, high	4 low, med, med/high, high	4 low, med, med/high, high	
Gas Type		NG (Natural Gas)	NG (Natural Gas)	NG (Natural Gas)	NG (Natural Gas)	
Gas Connection Size	inch	1/2	1/2	1/2	1/2	
Gross Weight	lbs	131	144	160	174	



\*Data provided by AHRI

Notes:

---



---



---



---



---

Table of Contents



# Electric Furnace

## Modular Air System

The MRCOOL® Multi-Position Modular Blower is built for reliability and designed to deliver dependable comfort. The electronically commutated motor (ECM) delivers consistent airflow throughout the seasons, allowing you to stay comfortable all year long.



- ✓ Mobile Home Approved
- ✓ R-410A Refrigerant
- ✓ Durable Build & Finish
- ✓ Multi-Position Application
- ✓ Superior Performance
- ✓ Energy Efficient
- ✓ Compact Design

‡Warranty provides for a total of 10 years of limited warranty coverage (Standard 5-year limited parts warranty plus an additional 5-year limited extended parts warranty; 15-year for heat exchanger where specified). Warranty must be registered online within 60 days of installation to qualify for extended coverage. Unregistered equipment defaults to 5-year coverage.





# PRODIRECT™ Series

## 14 SEER Condenser

The MRCOOL® ProDirect™ Series Condenser will deliver the reliable air comfort you seek at a price you can afford. This 14 SEER performance unit relies on R-410A refrigerant for eco-friendly and safe performance. Plus, the GoldFin® corrosion protection ensures this investment is one that will pay off for years to come.



- ✓ R-410A Refrigerant
- ✓ Painted Galvanized Steel
- ✓ Easy Installation
- ✓ Motor & Blower
- ✓ Protected Coils
- ✓ 24v Low Voltage Control
- ✓ Goldfin® Corrosion Protection
- ✓ 1.5-3 Ton Condenser = Rotary Compressor
- ✓ 3.5-5 Ton = Scroll Compressor

‡ Warranty provides for a total of 10 years of limited warranty coverage (Standard 5-year limited parts warranty plus an additional 5-year limited extended parts warranty; 15-year for heat exchanger where specified). Warranty must be registered online within 60 days of installation to qualify for extended coverage. Unregistered equipment defaults to 5-year coverage



# SPECIFICATION

# COOLING ONLY

MODEL NO.	Unit	HAC14018	HAC14024	HAC14030	HAC14036	HAC14042	HAC14048	HAC14060
-----------	------	----------	----------	----------	----------	----------	----------	----------

## CAPACITY & PERFORMANCE

Cooling	Capacity	Btu/h	18000	24000	30000	34500	42000	46000	56500
	SEER	Btu/h.w	13-14	13-14	13-14	13-14	13-14	13-14	13-14
	EER	Btu/h.w	11.7	12.2	11.7	11.7	11.7	11.2	11.2
Outdoor Airflow	CFM	1500	1700	1900	2800	4000	4000	4000	

## ELECTRICAL PARTS

Power Supply	V~Hz,ph	208/230v~60Hz,1ph	208/230v~60Hz,1ph	208/230v~60Hz,1ph	208/230v~60Hz,1ph	208/230v~60Hz,1ph	208/230v~60Hz,1ph	208/230v~60Hz,1ph	
Compressor	Rated Load	A	6.1	8.7	10.2	11.9	15.2	17.3	21
	Locked Rotor	A	33	44	56	60	112	108	128
Fan Motor	Input	W	145	178	178	207	207	510	510
	Output	W	60	85	85	110	110	230	230
	Speed	RPM	870	970	970	850	850	1095	1095

## DIMENSIONS & WEIGHT

Outdoor Unit	Dimension (WxHxD)	inch	21.8 x 24.9 x 21.8	21.8 x 24.9 x 21.8	21.8 x 24.9 x 21.8	29.1 x 24.9 x 29.1	29.1 x 33.1 x 29.1	29.1 x 33.1 x 29.1	29.1 x 33.1 x 29.1
	Packing (WxHxD)	inch	23.4 x 26.1 x 23.4	23.4 x 26.1 x 23.4	23.4 x 26.1 x 23.4	30.1 x 26.1 x 30.1	30.1 x 34.5 x 30.1	30.1 x 34.5 x 30.1	30.1 x 34.5 x 30.1
	Weight	lbs	101	115	128	157	183	185	207

## REFRIGERANT & PIPING

Refrigerant Charge	lb-oz	70.55	93.48	95.24	123.46	126.99	148.15	178.13
Liquid Side	inch	3/8"	3/8"	3/8"	3/8"	3/8"	3/8"	3/8"
Gas Side	inch	3/4"	3/4"	3/4"	3/4"	7/8"	7/8"	7/8"

# SPECIFICATION

# HEAT PUMP

MODEL NO.	Unit	HHP14018	HHP14024	HHP14030	HHP14036	HHP14042	HHP14048	HHP14060
-----------	------	----------	----------	----------	----------	----------	----------	----------

## CAPACITY & PERFORMANCE

Cooling	Capacity	Btu/h	17600	23600	28600	34000	40500	46000	56000
	SEER	Btu/h.w	13-14	13-14	13-14	13-14	13-14	13-14	13-14
	EER	Btu/h.w	11.7	12.2	11.7	11.7	11.7	11.2	11.2
Heating	Capacity	Btu/h	17200	22200	28600	33500	40000	46000	55000
	HSPF	Btu/h.w	8.2	8.2	8.3	8.3	8.3	8.3	8.3
Outdoor Airflow	CFM	1500	1700	1900	2800	4000	4000	4000	

## ELECTRICAL PARTS

Power Supply	V~Hz,ph	208/230v~60Hz,1ph	208/230v~60Hz,1ph	208/230v~60Hz,1ph	208/230v~60Hz,1ph	208/230v~60Hz,1ph	208/230v~60Hz,1ph	208/230v~60Hz,1ph	
Compressor	Rated Load	A	6.1	8.7	10.2	11.9	15.2	17.3	21
	Locked Rotor	A	33	44	56	60	112	108	128
Fan Motor	Input	W	145	178	178	207	207	510	510
	Output	W	60	85	85	110	110	230	230
	Speed	RPM	870	970	970	850	850	1095	1095

## DIMENSIONS & WEIGHT

Outdoor Unit	Dimension (WxHxD)	inch	21.8 x 24.9 x 21.8	21.8 x 24.9 x 21.8	21.8 x 24.9 x 21.8	29.1 x 24.9 x 29.1	29.1 x 33.1 x 29.1	29.1 x 33.1 x 29.1	29.1 x 33.1 x 29.1
	Packing (WxHxD)	inch	23.4 x 26.1 x 23.4	23.4 x 26.1 x 23.4	23.4 x 26.1 x 23.4	30.1 x 26.1 x 30.1	30.1 x 34.5 x 30.1	30.1 x 34.5 x 30.1	30.1 x 34.5 x 30.1
	Weight	lbs	104	121	137	156	207	207	214

## REFRIGERANT & PIPING

Refrigerant Charge	lb-oz	70.55	97	97	123.46	148.15	169.32	201.06
Liquid Side	inch	3/8"	3/8"	3/8"	3/8"	3/8"	3/8"	3/8"
Gas Side	inch	3/4"	3/4"	3/4"	3/4"	3/4"	7/8"	7/8"



## PRODIRECT™ Series

# 14 SEER Split System Air Handler

The MRCOOL® ProDirect™ 1.5 Ton Split System Air Handler can provide reliable 14 SEER efficiency through the seasons for many years to come. This unit uses an effective 3-speed blower to consistently give you the comfort you need every day. With a MRCOOL® air handler, you can rest easy.



- ✓ R-410A Refrigerant
- ✓ Painted Galvanized Steel
- ✓ Removable Filter
- ✓ Motor & Blower
- ✓ Durable Build & Finish
- ✓ Multi-Position Installation
- ✓ Optional Heating Kit Available
- ✓ Low Noise
- ✓ Brushless DC Motor

‡ Warranty provides for a total of 10 years of limited warranty coverage (Standard 5-year limited parts warranty plus an additional 5-year limited extended parts warranty; 15-year for heat exchanger where specified). Warranty must be registered online within 60 days of installation to qualify for extended coverage. Unregistered equipment defaults to 5-year coverage





# Up to 35 EER Geothermal Heat Pump

Our GeoCool® geothermal heat pump can provide you and your home with ultimate comfort and performance. This compact, eco-friendly product is an easy-to-install unit that uses chlorine-free and non-depleting R-410A refrigerant that provides energy savings and reduces air pollution.

+ complete install kits available



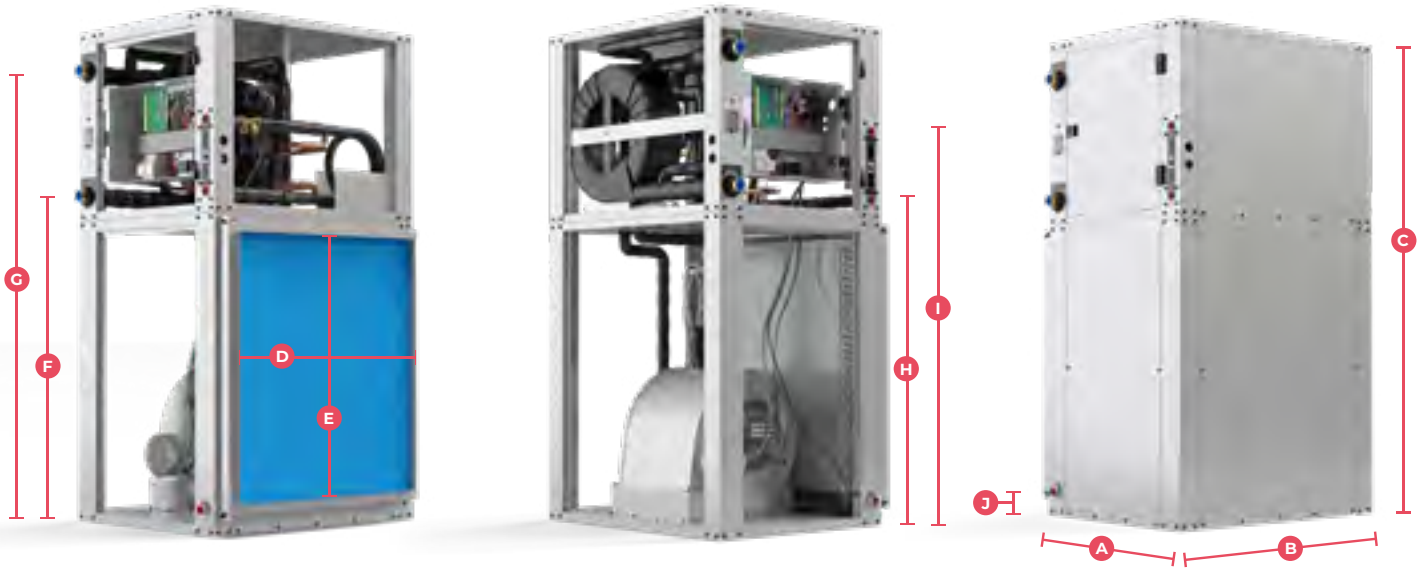
- ✓ R-410A Refrigerant service
- ✓ Painted Galvanized Steel
- ✓ Removable Filter mesh
- ✓ Motor & Blower fan
- ✓ Durable Build & Finish
- ✓ Multi-Position Installation
- ✓ Optional Heating Kit Available
- ✓ Low Noise design



† Warranty provides for a total of 10 years of limited warranty coverage (Standard 5-year limited parts warranty plus an additional 5-year limited extended parts warranty; 15-year for heat exchanger where specified). Warranty must be registered online within 60 days of installation to qualify for extended coverage. Unregistered equipment defaults to 5-year coverage.

‡ Warranty provides for a total of 10 years of limited warranty coverage (Standard 5-year limited parts warranty plus an additional 5-year limited extended parts warranty; 15-year for heat exchanger where specified). Warranty must be registered online within 60 days of installation to qualify for extended coverage. Unregistered equipment defaults to 5-year coverage.

# GEOHERMAL HEAT PUMP | DOWNFLOW



GCHPDO\*TG TAN\*

## DIMENSIONAL DATA

MODEL	CABINET	RETURN		GROUND LOOP		DESUPERHEATER		CONDENSATE	WEIGHT
		A x B x C	D x E	FILTER SIZE	F	G	H		
2 TON	DOWNFLOW 25.75 x 32.00 x 56.00	26 x 28	28 x 30	35.88	47.94	35.275	43.525	3.75	325*/335** LBS
3 TON	DOWNFLOW 25.75 X 32.00 X 56.00	26 x 28	28 x 30	35.88	51.25	35.275	43.525	3.75	350*/360** LBS
4 TON	DOWNFLOW 25.75 X 32.00 X 60.00	30 X 28	32 X 30	39.88	55.13	39.275	47.525	3.75	380*/390** LBS
5 TON	DOWNFLOW 25.75 X 32.00 X 64.00	34 X 28	36 X 30	43.88	60.50	43.275	51.525	3.75	415*/425** LBS

GROUND LOOP CONNECTIONS: 1" FPT / DESUPERHEATER CONNECTIONS: 3/4" FPT / CONDENSATE: 3/4" FPT  
 FILTER RACK WIDTH IS 3". ("A" DIMENSION DOES NOT INCLUDE FILTER BACK WIDTH)

\*UNIT WEIGHT NO DHW

\*\*UNIT WEIGHT WITH DESUPERHEATER

## PERFORMANCE RATINGS

MODEL	LOAD	FLUID FLOW (GPM)	AIRFLOW (COOLING CFM)	AIRFLOW (HEATING CFM)	OPEN LOOP (GROUND WATER HEAT PUMP)				OPEN LOOP (GROUND LOOP HEAT PUMP)			
					COOLING		HEATING		COOLING		HEATING	
					Capacity (BTU/HR)	EER	Capacity (BTU/HR)	COP	Capacity (BTU/HR)	EER	Capacity (BTU/HR)	COP
2 TON	FULL	8.0	1000	950	29,000	27.4	25,700	5.4	27,000	20.7	19,900	4.2
	PART	7.0	850	800	23,000	36.5	19,000	5.5	21,900	29.1	16,500	4.7
3 TON	FULL	9.0	1350	1300	43,000	27.2	38,000	5.3	39,000	20.6	29,000	4.4
	PART	8.0	1150	1100	33,000	35.7	27,500	5.6	30,300	29.0	24,000	4.8
4 TON	FULL	12.0	1850	1750	56,000	26.0	50,000	4.9	50,000	19.2	39,400	4.0
	PART	11.0	1550	1500	41,000	33.0	34,500	5.0	38,000	27.0	30,000	4.5
5 TON	FULL	15.0	2300	2200	72,500	24.0	64,500	4.9	66,500	17.5	50,500	4.0
	PART	14.0	1950	1850	55,200	31.0	47,000	5.2	53,400	26.0	41,000	4.6

ALL RATINGS BASED ON 208V / 60Hz / 1ph

HEATING CAPACITIES BASED ON 68.0°F DB / 59.0°F WB ENTERING AIR TEMPERATURE

COOLING CAPACITIES BASED ON 80.6°F DB / 66.2°F WB ENTERING AIR TEMPERATURE

# GEOHERMAL HEAT PUMP | VERTICAL



GCHPVO\*  
TGTAN\*

## DIMENSIONAL DATA

MODEL	CABINET	RETURN		GROUND LOOP		DESUPERHEATER		CONDENSATE	WEIGHT	
		A x B x C	D x E	FILTER SIZE	F	G	H			I
2 TON	VERTICAL	25.75 X 32.00 X 44.00	26 x 28	28 x 30	3.00	15.06	2.40	10.65	13.145	325*/335** LBS
3 TON	VERTICAL	25.75 X 32.00 X 44.00	26 x 28	28 x 30	3.00	18.38	2.40	10.65	13.145	350*/360** LBS
4 TON	VERTICAL	25.75 X 32.00 X 48.00	30 X 28	32 X 30	3.00	18.25	2.40	10.65	13.145	380*/390** LBS
5 TON	VERTICAL	25.75 X 32.00 X 52.00	34 X 28	36 X 30	3.00	19.63	2.40	10.65	13.145	415*/425** LBS

GROUND LOOP CONNECTIONS: 1" FPT / DESUPERHEATER CONNECTIONS: 3/4" FPT / CONDENSATE: 3/4" FPT  
 FILTER RACK WIDTH IS 3". ("A" DIMENSION DOES NOT INCLUDE FILTER BACK WIDTH)

\*UNIT WEIGHT NO DHW

\*\*UNIT WEIGHT WITH DESUPERHEATER

## PERFORMANCE RATINGS

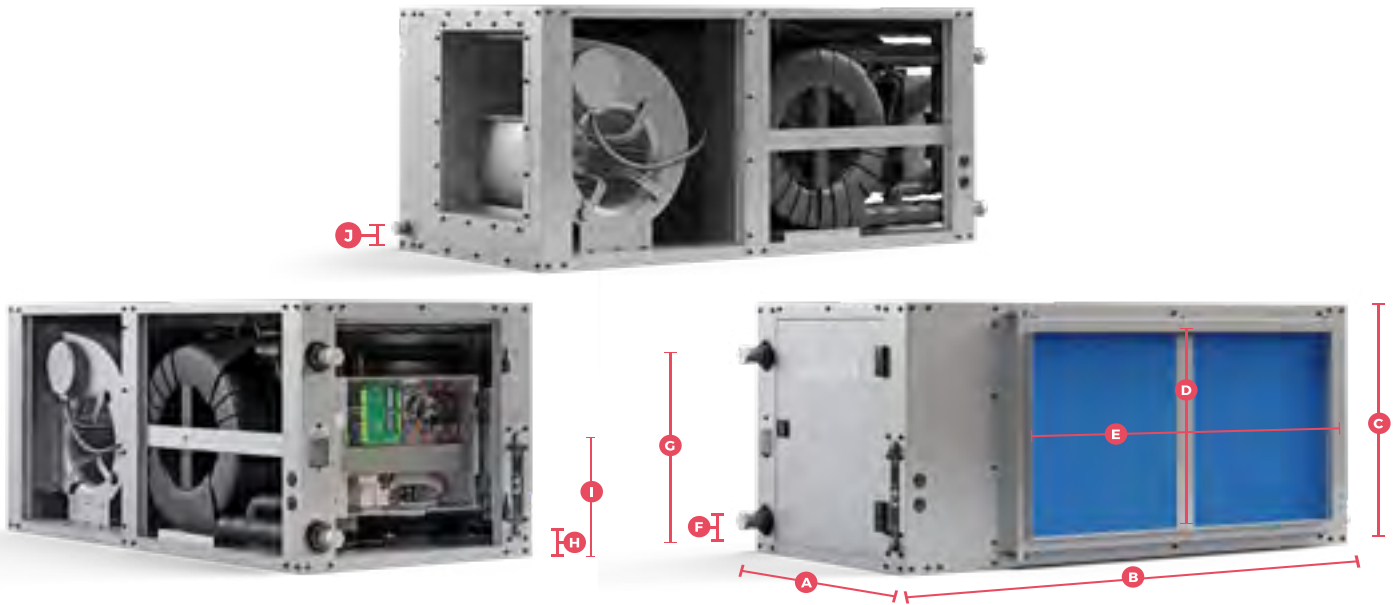
MODEL	LOAD	FLUID FLOW (GPM)	AIRFLOW (COOLING CFM)	AIRFLOW (HEATING CFM)	OPEN LOOP (GROUND WATER HEAT PUMP)				OPEN LOOP (GROUND LOOP HEAT PUMP)			
					COOLING		HEATING		COOLING		HEATING	
					Capacity (BTU/HR)	EER	Capacity (BTU/HR)	COP	Capacity (BTU/HR)	EER	Capacity (BTU/HR)	COP
2 TON	FULL	8.0	1000	950	29,000	27.4	25,700	5.4	27,000	20.7	19,900	4.2
	PART	7.0	850	800	23,000	36.5	19,000	5.5	21,900	29.1	16,500	4.7
3 TON	FULL	9.0	1350	1300	43,000	27.2	38,000	5.3	39,000	20.6	29,000	4.4
	PART	8.0	1150	1100	33,000	35.7	27,500	5.6	30,300	29.0	24,000	4.8
4 TON	FULL	12.0	1850	1750	56,000	26.0	50,000	4.9	50,000	19.2	39,400	4.0
	PART	11.0	1550	1500	41,000	33.0	34,500	5.0	38,000	27.0	30,000	4.5
5 TON	FULL	15.0	2300	2200	72,500	24.0	64,500	4.9	66,500	17.5	50,500	4.0
	PART	14.0	1950	1850	55,200	31.0	47,000	5.2	53,400	26.0	41,000	4.6

ALL RATINGS BASED ON 208V / 60Hz / 1ph

HEATING CAPACITIES BASED ON 68.0°F DB / 59.0°F WB ENTERING AIR TEMPERATURE

COOLING CAPACITIES BASED ON 80.6°F DB / 66.2°F WB ENTERING AIR TEMPERATURE

# GEOHERMAL HEAT PUMP | HORIZONTAL



GCHPDO\*TG TAN\*

## DIMENSIONAL DATA

MODEL	CABINET	RETURN		GROUND LOOP		DESUPERHEATER		CONDENSATE	WEIGHT
		A x B x C	D x E	FILTER SIZE	F	G	H		
2 TON	HORIZONTAL 25.75 X 51.00 X 23.125	18 x 35	20 x 37	3.00	15.06	2.40	10.65	1.75	325*/335** LBS
3 TON	HORIZONTAL 25.75 X 51.00 X 23.125	18 x 35	20 x 37	3.00	18.38	2.40	10.65	1.75	350*/360** LBS
4 TON	HORIZONTAL 25.75 X 56.00 X 23.125	18 X 40	20 X 42	3.00	18.25	2.40	10.65	1.75	380*/390** LBS
5 TON	HORIZONTAL 25.75 X 61.00 X 23.125	18 X 45	20 X 47	3.00	19.63	2.40	10.65	1.75	415*/425** LBS

GROUND LOOP CONNECTIONS: 1" FPT / DESUPERHEATER CONNECTIONS: 3/4" FPT / CONDENSATE: 3/4" FPT  
 FILTER RACK WIDTH IS 3". ("A" DIMENSION DOES NOT INCLUDE FILTER BACK WIDTH)

\*UNIT WEIGHT NO DHW

\*\*UNIT WEIGHT WITH DESUPERHEATER

## PERFORMANCE RATINGS

MODEL	LOAD	FLUID FLOW (GPM)	AIRFLOW (COOLING CFM)	AIRFLOW (HEATING CFM)	OPEN LOOP (GROUND WATER HEAT PUMP)				OPEN LOOP (GROUND LOOP HEAT PUMP)			
					COOLING		HEATING		COOLING		HEATING	
					Capacity (BTU/HR)	EER	Capacity (BTU/HR)	COP	Capacity (BTU/HR)	EER	Capacity (BTU/HR)	COP
2 TON	FULL	8.0	1000	950	29,000	27.4	25,700	5.4	27,000	20.7	19,900	4.2
	PART	7.0	850	800	23,000	36.5	19,000	5.5	21,900	29.1	16,500	4.7
3 TON	FULL	9.0	1350	1300	43,000	27.2	38,000	5.3	39,000	20.6	29,000	4.4
	PART	8.0	1150	1100	33,000	35.7	27,500	5.6	30,300	29.0	24,000	4.8
4 TON	FULL	12.0	1850	1750	56,000	26.0	50,000	4.9	50,000	19.2	39,400	4.0
	PART	11.0	1550	1500	41,000	33.0	34,500	5.0	38,000	27.0	30,000	4.5
5 TON	FULL	15.0	2300	2200	72,500	24.0	64,500	4.9	66,500	17.5	50,500	4.0
	PART	14.0	1950	1850	55,200	31.0	47,000	5.2	53,400	26.0	41,000	4.6

ALL RATINGS BASED ON 208V / 60Hz / 1ph

HEATING CAPACITIES BASED ON 68.0°F DB / 59.0°F WB ENTERING AIR TEMPERATURE

COOLING CAPACITIES BASED ON 80.6°F DB / 66.2°F WB ENTERING AIR TEMPERATURE



# Up to 20 SEER Universal<sup>®</sup> Series Condenser

MRCOOL<sup>®</sup> would like to introduce you to the future of HVAC with its new Ultra-Heat Inverter Unitary Condensing Unit and Air Handler. Choose from 2-3 ton or 4-5 ton for superior comfort and energy efficiency, which allows for rapid heating and cooling with an extremely low noise level.



- ✓ Sizes: 2-3 ton or 4-5 ton
- ✓ Condensers can be field converted to smaller size using dip switch setting
- ✓ Gold fin<sup>®</sup> corrosion protection
- ✓ Variable speed
- ✓ Rapid cooling and heating
- ✓ Quiet 55-58 dB(A) operation
- ✓ 100% heating capacity down to -5°F (2T) 14°F (4T)
- ✓ 100% cooling capacity up to 115°F (2T) 109.4°F (4T)
- ✓ Low ambient cooling down to 5°F
- ✓ Gas furnace not required
- ✓ Compatible with any third party air handler and thermostat including WiFi/Nest
- ✓ Slim design
- ✓ 3 connection types:
  - Pre-Charged No-Vac<sup>®</sup> Quick Connect<sup>®</sup> Line Set (15ft, 25ft, 35ft, 50ft-Couplings also available)
  - Sweat braze connection
  - Flare connection

‡ Warranty provides for a total of 10 years of limited warranty coverage (Standard 5-year limited parts warranty plus an additional 5-year limited extended parts warranty; 15-year for heat exchanger where specified). Warranty must be registered online within 60 days of installation to qualify for extended coverage. Unregistered equipment defaults to 5-year coverage



# SPECIFICATION

# UNIVERSAL® CONDENSER

MODEL NO.	UNITS	MDU018024	MDU018036	MDU018048	MDU018060
-----------	-------	-----------	-----------	-----------	-----------

## CAPACITY & PERFORMANCE

Cooling Capacity	Btu/h (kW)	24000 (7 kW)	36000 (10.55 kW)	48000 (14 kW)	54000 (15.83 kW)
SEER	Btu/w	Up to 20	Up to 18	Up to 18	Up to 17
Heating Capacity	Btu/h	24000 (7 kW)	36000 (10.55 kW)	48000(14 kW)	54000 (15.83 kW)
EER	(Btu/h)W	12.5	11	11	10.5
HSPF	Btu/w	10.5	10	10.5	10
Noise level (Outside)	dB(A)	55	57	58	58

## ELECTRICAL PARTS

Min/Max Voltage	V	187/253	187/253	187/253	187/253
Rated Voltage	V	208/230v~60Hz,1p	208/230v~60Hz,1p	208/230v~60Hz,1p	208/230v~60Hz,1p
Min. Current Ampacity (MCA)	A	24	24	35	35
Max. Current Over Protection (MOP)	A	35	35	45	45

## DIMENSIONS & WEIGHT

Net Dimension (WxDxH)	inch (mm)	37 x 18.1 x 32.25 (940 x 460 x 820)	37 x 18.1 x 32.25 (940 x 460 x 820)	39.37 x 14.5 x 53.75 (1000 x 370 x 1365)	39.37 x 14.5 x 53.75 (1000 x 370 x 1365)
Packing Dimension (WxDxH)	inch (mm)	42.6 x 22.6 x 38.25 (1083 x 573 x 973)	42.6 x 22.6 x 38.25 (1083 x 573 x 973)	45.37 x 19.4 x 59.25 (1153 x 493 x 1505)	45.37 x 19.4 x 59.25 (1153 x 493 x 1505)
Net Weight	lbs (kg)	217.2 (98.5)	217.2 (98.5)	308.7 (140)	308.7 (140)
Gross Weight	lbs (kg)	240.3 (109)	240.3 (109)	337.3 (153)	337.3 (153)

## REFRIGERANT & PIPING

Refrigerant Type	oz	R-410A/148.8	R-410A/148.8	R-410A/220.48	R-410A/220.48
Connection Pipe Method		Quick Connect Flare, Weld (with Stub)	Quick Connect Flare, Weld (with Stub)	Quick Connect Flare, Weld (with Stub)	Quick Connect Flare, Weld (with Stub)
Liquid Suction	inch	3/8"-3/4"	3/8"-3/4"	3/8"-3/4"	3/8"-3/4"



\*Data provided by AHRI



Notes:

---



---



---



---



---



---



---

Table of Contents

[www.mrcool.com](http://www.mrcool.com)



# Up to 20 SEER Universal<sup>®</sup> Series Cooling-Only Condenser

Our cooling-only condenser with a DC inverter compressor is the newest addition to the Universal<sup>®</sup> line of products in 2-3Ton or 4-5Ton sizes. Customers who are looking only for the cooling efficiency of a Universal<sup>®</sup> Condenser can leverage this superior product as their perfect home comfort solution.



- ✓ Sizes: 2-3 ton or 4-5 ton
- ✓ Easy to Clean Metal Filter Protects Against Fire, Corrosion, and Deterioration
- ✓ Multi-position Installation (Upflow, Horizontal)
- ✓ 10-Year Limited Warranty\*
- ✓ Approved for mobile homes
- ✓ Internal fan blade creates low noise
- ✓ High Efficiency Energy Saving DC Fan Motor
- ✓ 2 Step Condensation Protection
- ✓ Special Fire-Proof, Anti-Shock Electrical Box design for the Circuit Breaker
- ✓ Compatible with any third party air handler and thermostat including WiFi/Nest
- ✓ 3 connection types:
  - Pre-charged No-Vac<sup>®</sup> Quick Connect<sup>®</sup> Line Set (15ft, 25ft, 35ft, 50ft-Couplings also available)
  - Sweat braze connection
  - Flare connection
- ✓ R-410A factory pre-charged air handler can be field converted to 2 Ton from 3 Ton, or 4 Ton from 5 Ton using a Dip Switch Setting (see manual for details)

†Warranty provides for a total of 10 years of limited warranty coverage (Standard 5-year limited parts warranty plus an additional 5-year limited extended parts warranty; 15-year for heat exchanger where specified). Warranty must be registered online within 60 days of installation to qualify for extended coverage. Unregistered equipment defaults to 5-year coverage.

# SPECIFICATION

# UNIVERSAL® COOLING-ONLY CONDENSER

MODEL NO.	UNITS	MDUC018024	MDUC018036	MDUC018048	MDUC018060
-----------	-------	------------	------------	------------	------------

## CAPACITY & PERFORMANCE

Cooling Capacity	Btu/h (kW)	24000 (7 kW)	36000 (10.55 kW)	48000(14 kW)	54000 (15.83 kW)
SEER	Btu/w	Up to 20	Up to 18	Up to 18	Up to 17
Heating Capacity	Btu/h	N/A	N/A	N/A	N/A
EER	(Btu/h)W	12.5	12.2	11.7	11.7
HSPF	Btu/w	N/A	N/A	N/A	N/A
Noise level (Outside)	dB(A)	55	57	58	58

## ELECTRICAL PARTS

Min/Max Voltage	V	187/253	187/253	187/253	187/253
Rated Voltage	V	208/230v~60Hz,1p	208/230v~60Hz,1p	208/230v~60Hz,1p	208/230v~60Hz,1p
Min. Current Ampacity (MCA)	A	24	24	35	35
Max. Current Over Protection (MOP)	A	35	35	45	45

## DIMENSIONS & WEIGHT

Net Dimension (WxDxH)	inch (mm)	37 x 18.1 x 32.25 (940 x 460 x 820)	37 x 18.1 x 32.25 (940 x 460 x 820)	37 x 12.625 x 56.375 (940 x 320 x 1430)	37 x 12.625 x 56.375 (940 x 320 x 1430)
Packing Dimension (WxDxH)	inch (mm)	42.625 x 22.625 x 38.25 (1083 x 573 x 973)	42.625 x 22.625 x 38.25 (1083 x 573 x 973)	40.875 x 17.25 x 62.25 (1038 x 438 x 1580)	40.875 x 17.25 x 62.25 (1038 x 438 x 1580)
Net Weight Outdoor	lbs (kg)	185.2 (84)	185.2 (84)	262 (119)	262 (119)
Gross Weight Outdoor	lbs (kg)	208.3 (94.5)	208.3 (94.5)	289 (131)	289 (131)

## REFRIGERANT & PIPING

Refrigerant Type	oz	R-410A/118.24	R-410A/118.24	R-410A/193.6	R-410A/193.6
Connection Pipe Method	inch (mm)	Quick Connect Flare, Weld (with Stub)	Quick Connect Flare, Weld (with Stub)	Quick Connect Flare, Weld (with Stub)	Quick Connect Flare, Weld (with Stub)



\*Data provided by AHRI



Notes:

---



---



---



---



---



---



---



---



---



---

Table of Contents

[www.mrcool.com](http://www.mrcool.com)



# Universal<sup>®</sup> Series A-Coil

The NEW Universal<sup>®</sup> A-Coil is a versatile and adaptable option to perfect your home's comfort level. Pre-charged with R-410A refrigerant, this superior component can be installed upflow, downflow, or horizontal right position, allowing it the flexibility to suit the needs of your new or existing system. Plus, with the use of the optional MRCOOL<sup>®</sup> No-Vac<sup>®</sup> Quick Connect<sup>®</sup> line set, the installation can be quick and easy.



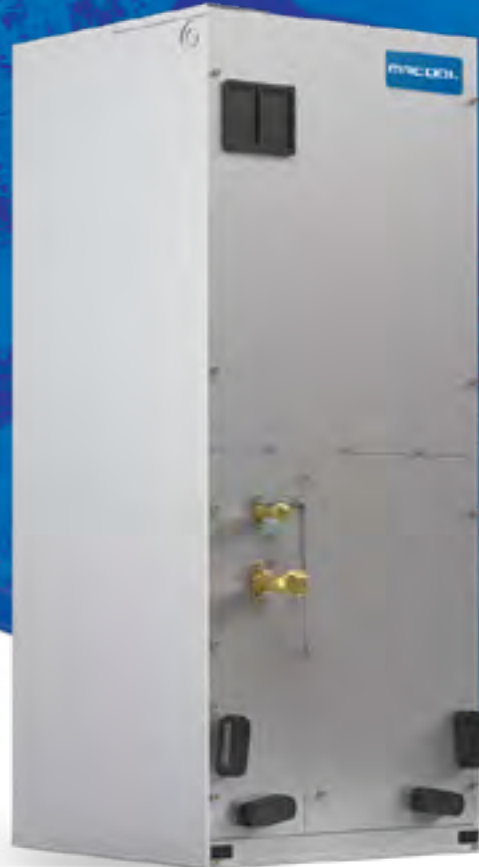
- ✓ Quiet Operation
- ✓ Versatile Installation Options
- ✓ Quick Installation
- ✓ Standard 24V Control  
Equipped with multiple protection safeguards
- ✓ Special Liquid Pipe Design that reduces  
excessive condensation



# Universal<sup>®</sup> Series High ESP Air Handler



The Universal<sup>®</sup> Series High ESP Air Handler provides superb comfort while offering rapid cooling and heating. Designed specifically for high static applications, the air handler delivers superior cooling and heating comfort while still achieving an industry-leading low decibel level as it maximizes energy savings.



- ✓ Sizes: 2-3 ton or 4-5 ton
- ✓ Easy to Clean Metal Filter Protects Against Fire, Corrosion, and Deterioration
- ✓ Multi-position Installation (Upflow, Horizontal)
- ✓ 10-Year Limited Warranty\*
- ✓ Internal fan blade creates low noise
- ✓ High Efficiency Energy Saving DC Fan Motor
- ✓ 2-Step Condensation Protection
- ✓ Special Fire-Proof Electrical Box design for the Circuit Breaker
- ✓ 3 connection types:
  - Pre-Charged No-Vac<sup>®</sup> Quick Connect<sup>®</sup> Line Set (15 ft, 25 ft, 35 ft, & 50ft couplings also available)
  - Sweat braze connection
  - Flare connection
- ✓ R-410A Factory Pre-charged air handler can be field converted to 2-Ton from 3-Ton, or 4-Ton from 5-Ton using a Dip Switch Setting (see manual for details)

†Warranty provides for a total of 10 years of limited warranty coverage (Standard 5-year limited parts warranty plus an additional 5-year limited extended parts warranty; 15-year for heat exchanger where specified). Warranty must be registered online within 60 days of installation to qualify for extended coverage. Unregistered equipment defaults to 5-year coverage.





## Central Ducted System

This quiet, compact unit features a multi-position air handler, so it can be installed with an upflow, a horizontal left or right, or a downflow configuration. This means that it can essentially meet any ductwork requirements you may have. The ducted air handler, which is variable speed, will ensure that your air is clean and comfortable with the use of filters.



- ✓ R-410A Refrigerant
- ✓ Painted Galvanized Steel
- ✓ Removable Filter
- ✓ Motor & Blower
- ✓ Durable Build & Finish
- ✓ Multi-Position Installation
- ✓ Optional Heating Kit Available
- ✓ Follow Me™ Function
- ✓ Wired Thermostat Included



MODEL NO.	Unit	CENTRAL-18-HP-MUAH-230-25	CENTRAL-24-HP-MUAH-230-25	CENTRAL-30-HP-MUAH-230-25	CENTRAL-36-HP-MUAH-230-00	CENTRAL-48-HP-MUAH-230-00	CENTRAL-60-HP-MUAH-230-00
CONDENSER MODEL NO.		CENTRAL-18-HP-C-230-25	CENTRAL-24-HP-C-230-25	CENTRAL-30-HP-C-230-25	CENTRAL-36-HP-C-230-00**	CENTRAL-48-HP-C-230-00**	CENTRAL-60-HP-C-230-00**

**CAPACITY & PERFORMANCE**

Cooling	Capacity	Btu/h	18000	24000	30000	36000	47000	57000
	SEER	Btu/w	22	19.2	18.5	18	17.3	18
	EER	Btu/w	12.5	12.5	10.3	10.4	9.3	10.3
Heating	Capacity	Btu/h	18000	24000	30000	36000	55000	60000
	HSPF4	Btu/w	11	10	9.5	9.1	10	9.2
	HSPF5	Btu/w	9	8.5	8	7.1	8.2	7.6
Indoor Noise Level (Hi/Mi/Lo)	dB(A)	39.5/38.5/35.5	43.0/41.5/38.0	46.5/43/39.5	46.8/44/41.3	53/50/46	52.5/49/44	
Outdoor Noise Level	dB(A)	57	58	63	61	59	61	

**ELECTRICAL PARTS**

Power Supply (Indoor)	V~Hz.ph	N/A	N/A	N/A	208/230v~60Hz,1ph	208/230v~60Hz,1ph	208/230v~60Hz,1ph
Power Supply (Outdoor)	V~Hz.ph	208/230v~60Hz,1ph	208/230v~60Hz,1ph	208/230v~60Hz,1ph	208/230v~60Hz,1ph	208/230v~60Hz,1ph	208/230v~60Hz,1ph
Min Circuit Ampacity (Indoor)	A	2.5	4	4.5	5	7.5	9
Max Fuse (Indoor)	A	15	15	15	15	15	15
Min Circuit Ampacity (Outdoor)	A	18	22	25	24	34	34
Max Fuse (Outdoor)	A	30	35	40	40	50	60

**DIMENSIONS & WEIGHT**

Indoor Unit	Dimension (WxDxH)	inch	21.02 x 17.52 x 45.00	21.02 x 17.52 x 45.00	21.02 x 21.02 x 49.02	21.02 x 21.02 x 49.02	21.02 x 21.02 x 49.02	21.02 x 24.49 x 52.99
	Packing (WxDxH)	inch	26.57x20.87x48.62	26.57x20.87x48.62	26.57x24.41x52.56	26.57x24.41x52.56	26.57 x 24.41 x 52.56	27.95 x 26.77 x 56.50
	Net/Gross Weight	lbs	106.48/131.61	106.48/132.72	128.53/157.41	129.63/154.10	132.50/156.75	164.02/190.48
Outdoor Unit	Dimension (WxDxH)	inch	35.04 x 13.46 x 26.50	37.24 x 16.14 x 31.89	37.24 x 16.14 x 31.89	37.24 x 16.14 x 31.89	37.48 x 16.34 x 52.48	37.48 x 16.34 x 52.48
	Packing (WxDxH)	inch	40.55 x 18.11 x 29.13	42.91 x 19.88 x 35.04	42.91 x 19.88 x 35.04	42.91 x 19.88 x 35.04	43.11x19.49x57.48	43.11x19.49x57.48
	Net/Gross Weight	lbs	94.36/100.97	125.22/143.74	146.39/156.09	151.68/161.16	217.59/248.68	217.15/248.46

**AIRFLOW**

Indoor air flow (Hi/Mi/Lo)	m3/h	980/900/840	1280/1160/1040	1520/1370/1210	1840/1650/1470	2180/1860/1540	2690/2310/1930
	CFM	576.47/529.41/494.12	752.94/682.35/611.76	894.12/805.88/711.76	1082.35/970.59/864.71	1282.35/1094.12/905.88	1582.35/1358.82/1135.2
Outdoor air flow	m3/h	3000	3800	5100	3800	7650	7500
	CFM	1764.71	2235.29	3000	2235.29	4500	4411.76
ESP Range	Pa	0-200	0-200	0-200	0-200	0-200	0-200

**REFRIGERANT & PIPING**

Refrigerant Charge	oz	R410A/56.44ozs	R410A/81.13ozs	R410A/111.11ozs	R410A/130.51ozs	R410A/165.79ozs	R410A/172.84ozs
Piping Size Liquid Side/Gas Side	inch	1/4"-1/2"	3/8"-5/8"	3/8"-5/8"	3/8"-3/4"	3/8"-3/4"	3/8"-7/8"



\*Data Provided by AHRI

\* This non-transferable warranty provides for a total of 10 years of limited warranty coverage for parts, labor, and compressor: <https://mrcool.com/warranty/>

\*\* 25' Quick Connect Line Set is not included with 36K, 48K, and 60K units. Those models are compatible with the MRCOOL® No Vac® Quick Connect Line set available for purchase separately.

Table of Contents



## U-Shaped Window Air Conditioner

The new U-shaped Window Air Conditioner is the latest technology to come from MRCOOL®. With its revolutionary U-Shaped design, this Air Conditioner gives you the ability to open and close the window it is installed in. By being able to close the window, it helps create a sound barrier to keep unwanted noise outside, making it incredibly quiet. The unit also features a redesigned bracket that simplifies and shortens the installation process.



- ✓ Incredibly Quiet
- ✓ Painless Installation
- ✓ Powerful Airflow
- ✓ WiFi Compatible
- ✓ Works with Amazon Alexa and Google Assistant
- ✓ Energy Star Certified
- ✓ 3 Speeds
- ✓ Smart Control with your wireless devices
- ✓ Technological Advancement in Inverter Efficiency
- ✓ Auto Cool
- ✓ Automatic Shut-off
- ✓ Multi-directional Air Control
- ✓ Available in 3 sizes: 8000 BTU, 10000 BTU, and 12000 BTU

# SPECIFICATION

# U-SHAPED WINDOW AIR CONDITIONER

MODEL NO.		Unit	MWUC08T115	MWUC10T115	MWUC12T115
CAPACITY & PERFORMANCE					
Cooling Capacity		Btu	8000	10000	12000
Rated EER		Btu/w.h,w/w	3.3	3.3	3.09
Rated CEER*		Btu/w.h,w/w	15	15	15
Noise Level	(Lo/Mi/Hi)				
	Indoor	dB(A)	42/-/47	42/-/51	42/-/52
	Outdoor	dB(A)	-/-/63.5	-/-/65	-/-/65
Airflow	Indoor (Lo/Mi/Hi)	CFM	112/141/203	147/182/250	161/192/265
	Outdoor (Hi)	CFM	477	465	424
Operation Temp	Indoor	°F °C	61°-90° 16°-32°	61°-90° 16°-32°	61°-90° 16°-32°
	Outdoor	°F °C	64.4°-109.4° 18°-43°	64.4°-109.4° 18°-43°	64.4°-109.4° 18°-43°

\*CEER: The Combined Energy Efficiency Ratio (CEER) is a standard used for window air conditioners.

## ELECTRICAL PARTS

Power Supply	V~Hz,ph	115v~60Hz,1ph	115v~60Hz,1ph	115v~60Hz,1ph
Rated Input	W	720	890	1140
Rated Current	A	8.78	9.97	12.17
Max Current	A	12	12.5	13.5
Standby Power	W	1.4	1.4	1.4
Max Input Consumption	W	900	1050	1240
Power Cord Length	Ft (mm)	4.92 (1500)	4.92 (1500)	4.92 (1500)
Fan Motor Speed (Lo/Mi/Hi)	rpm	1100/1225/1476	1108/1312/1720	1272/1483/1906

## DIMENSIONS & WEIGHT

Net Dimension (WxDxH)	inch (mm)	19.17 x 21.97 x 13.46 (487 x 558 x 342)	19.17 x 21.97 x 13.46 (487 x 558 x 342)	19.17 x 21.97 x 13.46 (487 x 558 x 342)	
Packing Dimension (WxDxH)	inch (mm)	21.14 x 24.29 x 17.48 (537 x 617 x 444)	21.14 x 24.29 x 17.48 (537 x 617 x 444)	21.14 x 24.29 x 17.48 (537 x 617 x 444)	
Net/Gross Weight	lb (kg)	55.56/69.00 (25.2/31.3)	56.88/70.55 (25.8/32.0)	58.86/72.53 (26.7/32.9)	
Max Coverage Area	Ft	Up to 350 sq ft	Up to 450 sq ft	Up to 550 sq ft	
Window Opening Required	Width (Min/Max)	inch (mm)	22/36 (559/914)	22/36 (559/914)	22/36 (559/914)
	Height (Min)	inch (mm)	13.75 (349)	13.75 (349)	13.75 (349)

## REFRIGERANT & PIPING

Refrigerant Type		R-32	R-32	R-32
Charge Amount	oz (g)	9.87 (280)	11.28 (320)	13.40 (380)
Design Pressure (L/H)	psi	300/520	300/520	300/520
Cooling Watts	W	720	890	1140



# MRBREEZE™ Bladeless Fan / Air Purifier

With its revolutionary bladeless design, the MRBREEZE™ offers a strong current of air that is not only smoother but also safer, as all of the moving components are encased internally within the fan. With its powerful motor and HEPA filter, it can purify and circulate the air at the same time.



Both Models are available in black, silver or copper.

- ✓ Safe Bladeless Design
- ✓ Easy Maintenance
- ✓ Powerful Airflow
- ✓ Captures Pollutants
- ✓ Reduces Allergens
- ✓ Removes Odors
- ✓ Oscillating Fan
- ✓ 8 Speeds
- ✓ Quiet Running
- ✓ Remote Control
- ✓ Fresh Air
- ✓ HEPA Double Purification

# SPECIFICATION

# MRBREEZE™ BLADELESS FAN / AIR PURIFIER

MODEL NO.	Unit	MRFAN36	MRFAN38
<b>PERFORMANCE</b>			
Clean Air Delivery Rate	CFM	90	90
Recommended Room Size	sq ft	400	400
Speed (Min/Max)	rpm	3200/8000	3200/8000
Airflow (lowest/highest)	CFM	10.5/32.7	10.5/32.7
Noise Level (Lo/Hi)	dB(A)	<30/<60	<30/<60
Rotation Angle		Approximately 120°	Approximately 120°
<b>DIMENSIONS</b>			
Colors		Black/Silver/Copper	Black/Silver/Copper
Dimensions (WxDxH)	in (mm)	13.78 x 14.96 x 25.98 (350 x 380 x 660)	8.66 x 8.66 x 38.58 (220 x 220 x 980)
Packing (WxDxH)	in (mm)	18.62 x 11 x 18 (537 x 617 x 444)	13.75 x 10 x 31 (349.25 x 254 x 787.4)
Net Weight	lb (kg)	6.2 (2.8)	11.2 (5.1)
<b>MECHANICAL</b>			
Filter Compatibility		HEPA	HEPA
Air Purifier Type		Tower	Tower
Filter Type		HEPA	HEPA
Filter Included		Yes	Yes
<b>ELECTRICAL</b>			
Voltage	V	110	110
Power	W	40	40
Frequency	Hz	50	50
Timing	Hr	1-8 hr	1-8 hr
Power Cord Length	Ft (m)	4.9 (1.5)	4.9 (1.5)

Notes:

---



---



---



---



---



---



---



---



---



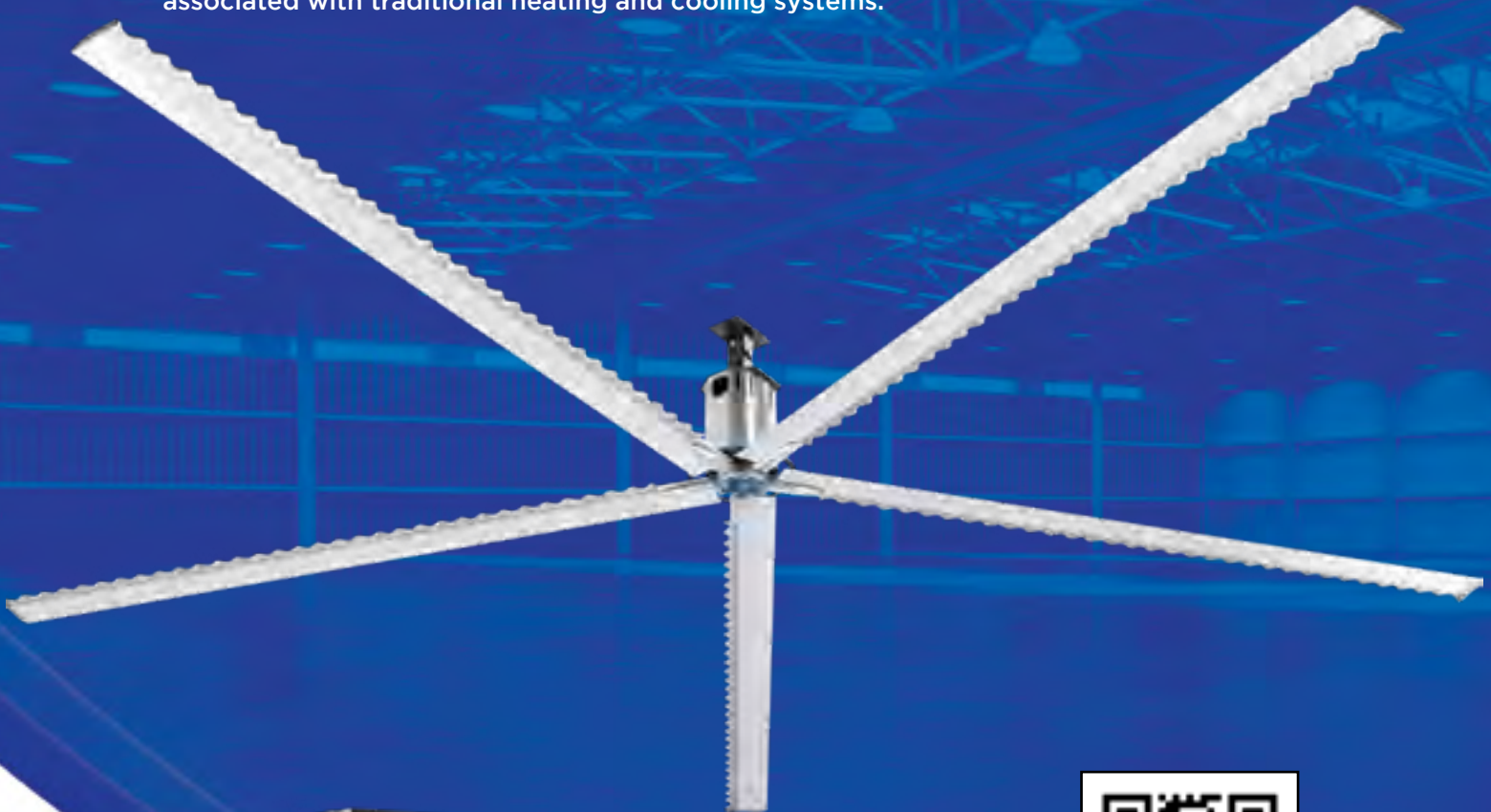
---

Table of Contents



# Cool Blade HVLS Fan

Our HVLS Industrial Fan is an affordable and efficient solution to cool large spaces. The unique tubercle blade design creates greater air volume than any other industrial fan on the market. This fan is not only inexpensive to operate, it also minimizes the need for costly ductwork associated with traditional heating and cooling systems.



- ✓ Up to 24 ft diameter
- ✓ Available in 3 sizes (14 ft, 18 ft, 24 ft)
- ✓ Reduces temperature by 10° on average
- ✓ Includes multiple safety features
- ✓ Cost Efficient
- ✓ Low Maintenance



# PATENTED\* NO-VAC® QUICK CONNECT® FACTORY CHARGED LINE SET

\*Pat: <https://www.mrcool.com/mrcool-patents/>

This easy-to-use line set greatly simplifies the installation process. It is pre-charged from the factory with the precise amount of refrigerant necessary for the MRCOOL® Universal series. Use of this line set does not require field charging or vacuuming. It is 100% ready to go right out of the box.



- Kink resistant for easier bending during installation
- 100% accurately precharged with R-410A refrigerant

15 FT	25 FT	35 FT	50 FT
1.94 OZ	3.17 OZ	9.77 OZ	19.44 OZ

- ✓ No vacuum needed
- ✓ Simple to use screw-on Quick Connect® valves
- ✓ Line sizes 3/4" and 3/8"
- ✓ Leak proof
- ✓ Faster installation than conventional line sets by saving 7 installation steps
- ✓ Strong 3/4" Gator-Flextra™ UV protective insulation sleeve provides extra protection against sun damage, weather erosion, or destruction from animals/rodents



When one standard size NO-VAC® QUICK CONNECT® LINE SET is not long enough, two standard QUICK CONNECT® LINE SETS can be combined using our NO-VAC® COUPLER to increase the desired length of the QUICK CONNECT® LINE SETS.



# PATENTED\* DIY® Pre-Charged Line Set

\*Pat: <https://www.mrcool.com/mrcool-patents/>

The MRCOOL DIY® Quick Connect® Line Set is 100% accurately pre-charged with R-410A refrigerant. This makes installation quick and easy with no vacuuming required. The MRCOOL DIY® Quick Connect® Line Set is intended for use with the MRCOOL® DIY® Single or Multi-Zone Units.



- ✓ Kink Resistant
- ✓ Simple to Use Screw-on Connectors
- ✓ Quick Connect® Valves
- ✓ Available in 16 ft or 25 ft lengths
- ✓ Line sizes 1/4", 1/2" & 3/8", 5/8"

- ✓ Multi-Zone Condenser includes adapter for 24K Air Handler (3/8", 5/8" Line Size)
- ✓ Leak Proof
- ✓ No Vacuum Needed

- ✓ 100% Accurately Pre-charged with R-410A Refrigerant
- ✓ Connect Line Sets Together to Create Longer Length Using the MRCOOL® DIY® Coupler

[Table of Contents](#)

[www.mrcool.com](http://www.mrcool.com)



# Special Truckload Orders

## Packaged Terminal

If you have ever stayed in a hotel, you have probably experienced the clunky sound of the A/C unit turning on. Nobody wants to be jolted out of bed by an alarming sound. That is the reason why MRCOOL® has worked hard to develop a packaged terminal unit that allows guests to get the restful sleep they deserve.



\*Truckload Orders Only



- ✓ Quiet Running
- ✓ R-410A Refrigerant
- ✓ Electric Heat Included
- ✓ Fresh Air Filter
- ✓ Auto Restart Function
- ✓ Gold Fin® Condenser



\*Data Provided by AHRI

# SPECIFICATION

# PACKAGED TERMINAL\*

MODEL NO.	UNITS	PTHP07325	PTHP09335	PTHP12335	PTHP15335
<b>CAPACITY &amp; PERFORMANCE</b>					
Cooling Capacity	Btu/h	7200 - 6800	9000 - 8800	12000 - 11800	14700 - 14500
EER	Btu/W*H	11.9	11.3	10.5	9.6
Heating Capacity	Btu/h	6000 - 5800	8100 - 7900	10800 - 10500	13500 - 13200
COP		3.4	3.4	3.2	3.0
Noise (Sound Pressure) Level	dB(A)	50/48/46	50/48/46	53/50/45	53/50/45
Supplemental Electric Heat	kW	2.5	3.5	3.5	3.5
<b>ELECTRICAL PARTS</b>					
Power Supply	Ph-V-Hz	1 - 208/230 - 60	1 - 208/230 - 60	1 - 208/230 - 60	1 - 208/230 - 60
Min. Circuit Ampacity	A	14	20	20	20
Connection Wiring	AWG	14AWG x 3	12AWG x 3	12AWG x 3	12AWG x 3
Cooling Current Rating	A	2.65/2.76	3.46/3.75	4.97/5.4	6.66/7.26
Heating Current Rating	A	2.25/2.41	3.04/3.28	4.3/4.63	5.74/6.2
Starting Current Rating	A	16	18	25.9	39
<b>DIMENSIONS &amp; WEIGHT</b>					
Net Dimension (WxDxH)	inch	42 x 21 x 16	42 x 21 x 16	42 x 21 x 16	42 x 21 x 16
Packing Dimension (WxDxH)	inch	45 x 25.4 x 19.3	45 x 25.4 x 19.3	45 x 25.4 x 19.3	45 x 25.4 x 19.3
Net Weight	lbs (kg)	101.4 (45.99)	106.9 (48.48)	117.9 (53.47)	120 (54.43)
Gross Weight	lbs (kg)	126.8 (57.51)	132.3 (60.01)	143.3 (64.99)	145.5 (65.99)
<b>REFRIGERANT &amp; PIPING</b>					
Refrigerant Type/Charge	- / oz	R-410A / 24.69	R-410A / 24.69	R-410A / 31.39	R-410A / 37.04
<b>OPERATING FACTORS</b>					
Cooling Operations Range Indoor	° F	62-90	62-90	62-90	62-90
Cooling Operations Range Outdoor	° F	64-109	64-109	64-109	64-109
Heating Operations Range Indoor	° F	32-80	32-80	32-80	32-80
Heating Operations Range Outdoor	° F	23-76	23-76	23-76	23-76

MODEL NO.	UNITS	PTAC07325	PTAC09335	PTAC12335	PTAC15335
<b>CAPACITY &amp; PERFORMANCE</b>					
Cooling Capacity	Btu/h	7300 - 7100	9200 - 9000	12000 - 11800	14700 - 14500
EER	Btu/W*H	11.9	11.3	10.7	9.5
Heating Capacity	Btu/h	N/A	N/A	N/A	N/A
COP		N/A	N/A	N/A	N/A
Noise (Sound Pressure) Level	dB(A)	50/48/46	50/48/46	53/50/45	53/50/45
Supplemental Electric Heat	kW	2.5	3.5	3.5	3.5
<b>ELECTRICAL PARTS</b>					
Power Supply	Ph-V-Hz	1 - 208/230 - 60	1 - 208/230 - 60	1 - 208/230 - 60	1 - 208/230 - 60
Min. Circuit Ampacity	A	14	20	20	20
Connection Wiring	AWG	14AWG x 3	12AWG x 3	12AWG x 3	12AWG x 3
Cooling Current Rating	A	3.91	5.9	8.7	10.6
Heating Current Rating	A	N/A	N/A	N/A	N/A
Starting Current Rating	A	16	18	25.9	39
<b>DIMENSIONS &amp; WEIGHT</b>					
Net Dimension (WxDxH)	inch	42 x 21 x 16	42 x 21 x 16	42 x 21 x 16	42 x 21 x 16
Packing Dimension (WxDxH)	inch	45 x 25.4 x 19.3	45 x 25.4 x 19.3	45 x 25.4 x 19.3	45 x 25.4 x 19.3
Net Weight	lbs (kg)	99.2 (44.99)	104.7 (47.49)	115.7 (52.48)	117.9 (53.47)
Gross Weight	lbs (kg)	123.5 (56.01)	130 (58.96)	141.1 (64.00)	143.3 (64.99)
<b>REFRIGERANT &amp; PIPING</b>					
Refrigerant Type/Charge	- / oz	R-410A / 24.69	R-410A / 24.69	R-410A / 31.39	R-410A / 37.04
<b>OPERATING FACTORS</b>					
Cooling Operations Range Indoor	° F	62-90	62-90	62-90	62-90
Cooling Operations Range Outdoor	° F	64-109	64-109	64-109	64-109
Heating Operations Range Indoor	° F	32-80	32-80	32-80	32-80
Heating Operations Range Outdoor	° F	23-76	23-76	23-76	23-76

# Accessories

Some of our most popular MRCOOL® accessories are shown below. Ask our sales team about our full list of available accessories. New ones are added often.



## Small Wall Mounting Brackets

- ✓ Keep away from debris and pets
- ✓ Easy to install
- ✓ Solid Steel Construction
- ✓ Supports up to 176 pounds
- ✓ Painted Exterior

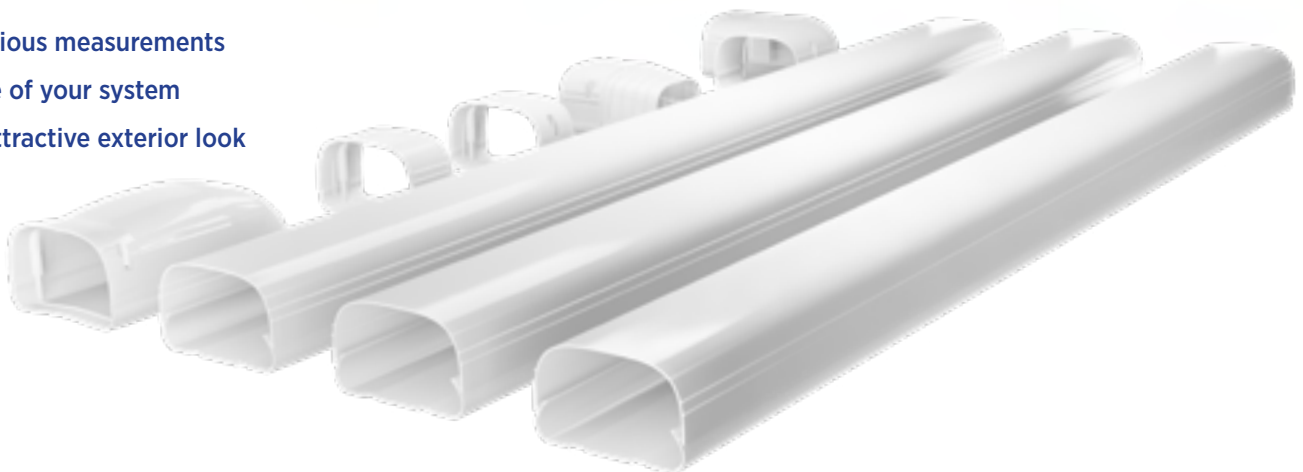
## Large Wall Mounting Brackets

- ✓ For use with larger condensers
- ✓ Easy to Install
- ✓ Solid Steel Construction
- ✓ Supports up to 440 pounds
- ✓ Painted Exterior



## LineGuard® Line Set Cover

- ✓ Durable
- ✓ Easy to install
- ✓ Available in various measurements
- ✓ Extends the life of your system
- ✓ Gives a more attractive exterior look



# DIY® Coupler

- ✓ Allows multiple line sets to be connected to increase length
- ✓ Copper construction
- ✓ DIYCOUPLER-1412 + DIYCOUPLER-3858



# Propane Conversion Kits

- ✓ Convert to propane when natural gas is not a viable option
- ✓ Temperature control sequencers
- ✓ Alternative fuel option
- ✓ Leakage Detection

# Optional Electric Heat Kits

- ✓ Nickel chromium heat elements
- ✓ Temperature control sequencers
- ✓ Multiple branch circuit capability
- ✓ Factory installed circuit breaker



# Smart HVAC Ductless Ministat

On-device local controls completely manage a full range of mini split air conditioner actions including operating modes, swing positions, fan speeds and more. This Ministat is ideal for homes, hotels, vacation rentals, and more.

- ✓ Global control
- ✓ Temperature range control
- ✓ Auto remote detection
- ✓ Daily/weekly scheduling
- ✓ Timeline of actions
- ✓ Temperature calibration

- ✓ Local controls
- ✓ Location based control
- ✓ Comfy mode (temperature)
- ✓ Air filter status
- ✓ Actual room temperature
- ✓ Humidity calibration

- ✓ Zone controls
- ✓ Voice controls
- ✓ Comfy mode (humidity)
- ✓ Usage statistics
- ✓ Actual room humidity and many more!







**MRCOOL**<sup>®</sup>  
COMFORT MADE SIMPLE

48 Remington Way

Hickory, KY 42051

270.366.0457

[www.mrcool.com](http://www.mrcool.com)

