

THE OUTDOOR PLUS

Fire and Water Feature Option for Outdoor Use Only

TOP fire feature you must comply with the instructions included for the fire feature.

The Feature must comply with TOP clearance and installation instructions.

WARNING: FOR OUTDOOR USE ONLY *

Installation:

We suggest that our fire products be installed by professionals that are locally licensed by the authority having jurisdiction in gas piping

Service:

We suggest that our products be serviced by a professional certified in the US by the National Fireplace Institute (NFI) as NFI Gas Specialists.



WARNING:

Improper installation, adjustment, alteration, service, or maintenance can cause injury or property damage. Read the installation, operating, and maintenance instructions thoroughly before installing or servicing this equipment.

INSTALLER: Leave this manual with the appliance.
CONSUMER: Retain this manual for future reference.

Index:

- 1) General Information
- 2) Selecting the Location
- 3) Construction Of The Enclosure
- 4) Installation Of the Water Feature
- 5) Media

Product Specific Information

- 6) Parts List
- 7) Water reservoir Operation
- 8) Maintenance
- 9) Troubleshooting
- 10) Replacement Parts
- 11) Warranty

General Information

Please carefully follow the instructions in this manual to prevent personal injury or property loss. Instructions are updated as needed. It is the installer's responsibility to periodically review instructions for applicable updates.

The steps listed as:

WARNINGS: Contains information critical to safe installation and operation of the Fire and Water.

WARRANTY REQUIREMENT: Must be strictly followed to qualify for product warranty. Warranty will be void if not followed.

IMPORTANT: Are notes and insights to help ensure product satisfaction and serviceability.

WARNING: It is the installer's responsibility to ensure a safe installation and to educate the end user as to proper operation. Leave this manual with the end user.

WARNING: Never alter product or configuration in any way.

WARNING: It is the responsibility of the installer to follow ALL LOCAL CODES concerning the installation and operation of both the fire pit and water reservoir . In the absence of local codes, please follow:

- Fixed piping system: The *National Fuel Gas Code, ANSI Z223.1/NFPA 54* or *International Fuel Gas Code*.
- Electrical ground: The *National Electrical Code, ANSI/NFPA 70*.

WARNING: For units with the fire feature option only use gas/fuel type specified for this fire pit see label on the fire pit Box. Verify correct gas/fuel type and pressure. Never use an alternative fuel to include bio-fuel, ethanol, lighter fluid or any other fuel.

Gas pressure and type should be checked prior to use and installations.

Natural Gas Fire Pit:

Supply Pressure: Minimum 3.5" W.C.; Maximum: 7.0" W.C.

Outlet Pressure: 3.5" W.C.

LP Gas Fire Pit:

Supply Pressure: Minimum 8.0" W.C.; Maximum: 11.0" W.C.

Outlet Pressure: 10.0" W.C.

WARRANTY REQUIREMENTS: Water Reservoir media weight limitation is 60 lbs. maximum even distributed.

Selecting the Location

WARNING: Using this water Reservoir with any kind of fire feature is for outdoor use only and must comply with the correct TOP fire pit instructions and clearances.

WARNING: The water Reservoir must be supplied power via GFI protected circuits.

WARNING: water Reservoir with the fire option refer to the correct fire pit installation instructions.

WARRANTY REQUIREMENT: The water Reservoir must be properly drained and winterized in areas that drop below freezing temperatures. (Section 8)

WARRANTY REQUIREMENT: Your location must have sufficient drainage to prevent damage to surrounding surfaces. The Outdoor Plus does not warranty against drips or leaks and is not responsible for any damage. It is the installer's responsibility to ensure there is enough drainage to allow for

Water Feature Clearances:

maintenance, repair, winterization or leak of the

. Water Reservoir

IMPORTANT: Choose a location that allows easy access for installation and maintenance of the water reservoir

Construction of the Enclosure

WARNING: For a water reservoir with the fire option follow the correct fire pit instructions.

WARNING: The water reservoir must be supplied power via GFI protected circuits

WARRANTY REQUIREMENT: The enclosure must be constructed on a stable surface.

WARRANTY REQUIREMENT: The weight of the water Reservoir must be supported properly

WARRANTY REQUIREMENT: Your location must have sufficient drainage to prevent damage to surrounding surfaces. TOP does not warranty against drips or leaks and is not responsible for any damage. It is the installer's responsibility to ensure there is enough drainage to allow for maintenance, repair winterization or leak of the water reservoir

WARRANTY REQUIREMENT: Do not rest or hang the enclosure on the water reservoir . The enclosure should be free standing.

IMPORTANT: Make sure the water reservoir is level.

Installation:

We suggest that our fire products be installed by professionals that are locally licensed by the authority having jurisdiction in gas piping.

Installation of the Fire and Water Feature

WARRANTY REQUIREMENT: The water feature should be supported properly when placed into enclosure.

WARRANTY REQUIREMENT: Soft water is recommended. Hard water may cause premature failure of components and the pump.

WARRANTY REQUIREMENT: Never lift the unit by the TOP water or fire bowl, tower, or ring. This will damage these parts.

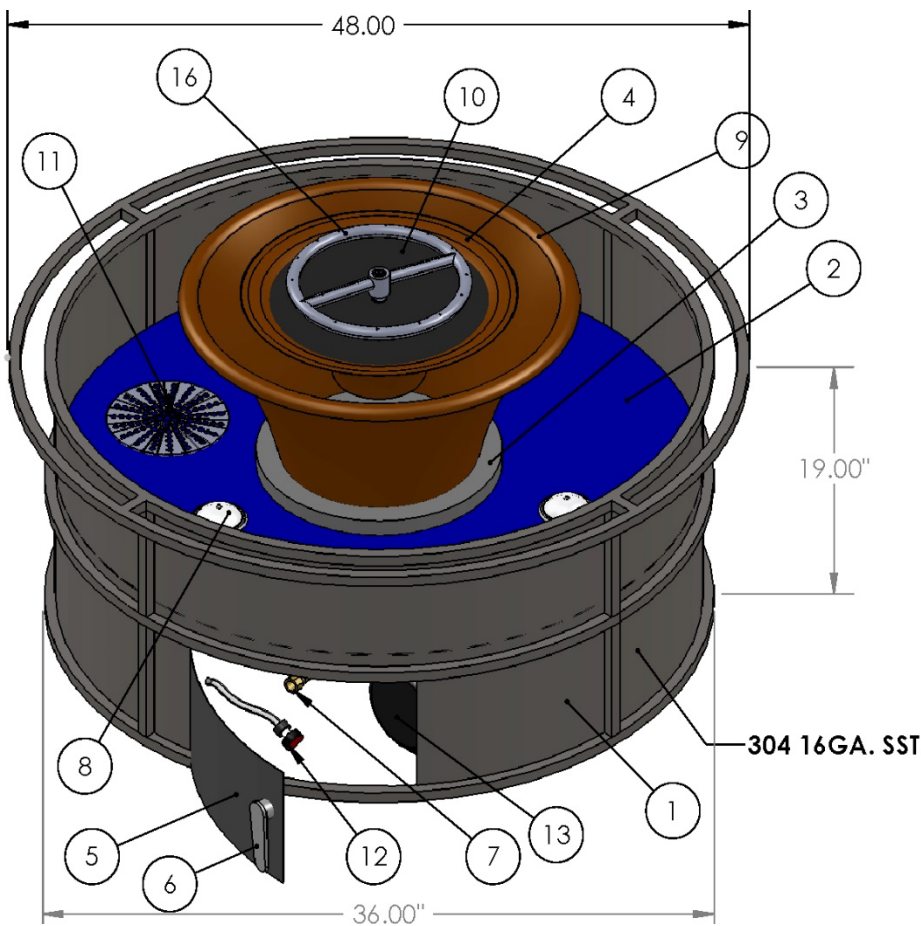
WARRANTY REQUIREMENT: Ensure the water basin is able to be removed for regular service and maintenance.

Never permanently mount in a way that it cannot be removed.

WARRANTY REQUIREMENT: Water reservoir tower weight limit is 900lbs maximum.

WARRANTY REQUIREMENT: Water basin media weight limitation is 70 lbs. maximum evenly distributed.

WARRANTY REQUIREMENT: Do not exceed the psi on your water supply. This may damage the auto fill



ITEM NO.	PART NUMBER	QTY.
1	Olympian 48	1
2	Water reservoir	1
3	Base Bowl	1
4	Inner bowl 24 INCH	1
5	Door SST	1
6	Handle	1
7	Gas Valve	1
8	Lights color LED	3
9	Outer bowl 24 INCH	1
10	Fire plate SST	1
11	Cover	1
12	Drain	1
13	Filter	1
14	Circulation Pump 110V 24 hr.	1
15	GFI	1
16	Round Burner	1
17	Autofill	1

- 1) Position the pump so they can be accessed in the future.
- 2) Prepare the site.
 - a. Make sure the area is stable and level.
 - b. Ensure adequate drainage to allow for periodic maintenance and winterization that will not result in damage to the surrounding area.
 - c. Ensure electric is run to site on GFI circuit and complies with all codes by the authority having jurisdiction.
 - d. For fire option ensure there is correct gas type, plumbed to site, of sufficient BTU, install by a certified installer and inspected by the authority having jurisdiction. Refer to the correct fire pit instructions.
- 3) Open the crate of your water feature being careful not to damage the unit.
 - a. Clean the water reservoir all debris left from the shipping crate.
- 4) Inspect your water reservoir for any visual damage or defect.
- 5) Set water reservoir in place. This will require at least 2 people.
- 6) Mount your water feature to the basin tower when applicable.
- 7) Level your water feature
 - a. The adjustable legs may also be used for minor height adjustments. Do not adjust out more than 6.25" from the bottom of the flange to the bottom of the foot or the feature may collapse.(Figure 7)

- b. Make major height adjustments with block that is larger than the feet and sufficiently sturdy that there is not risk the unit will fall.
- c. Adjust the basin to level condition first.
- d. After the basin is level check the water feature for level.
 - i. If your water feature is made of copper it may be possible to make some leveling



adjustment by carefully adjusting the bowl itself.

- ii. If it is not possible to adjust the water feature then make the water feature level adjustments using the adjustable legs.
- 8) Hook up the basin drain and the overflow drain to the onsite drainage system.
 - a. Your system will require regular service and or winterization.
 - b. Include a shutoff valve for the water reservoir drain that is convenient to access.
- 9) Hook up electrical cord to GFI electrical supply following the wire diagram.
 - a. Your system can be wired so that one switch controls multiple functions or each function is controlled independently.
 - b. Refer to the wire labels on the 20 ft. 5 conductor power cord.
 - Pump (Water) - minimum 2.0 amp 120 VAC
 - Lights - minimum 0.5 amp 12 VAC LED
- 10) Turn on lights to ensure they work properly.
- 11) Hook up water to auto refill.
 - a. Take care not to damage the unit by over torquing.
 - b. Use plumber tape or appropriate sealer for PVC.
- 12) Hook up gas supply for water basins with the fire option.
 - a. Follow all fire pit instructions provided in the fire pit instruction.

- b. Use appropriate gas rated sealer.
 - c. Do not use any sealers on flare fittings
 - d. Ensure all fittings are leak tested with leak reactor or gas detector.
- 13) Fill your water basin with water ½ full by pouring water into water features above.
- a. Recommended to fill with external water source watching for leaks as the basin fills.
 - b. TOP does not warranty against minor leaks. Your water feature has been assembled and thoroughly inspected prior to shipping. There are many connections and in some cases handmade water features
 - c. Repair leaks as necessary.
- 14) Once your feature is ½ full turn on the water feature and make any necessary adjustments.
- a. Adjust the flow of your feature using the ball valve provided.

- i. It is recommended to not close off the ball valve more than $\frac{1}{4}$ turn. This may reduce the life of the water pump.
- 15) Turn on the water supply to the water basin.
 - a. Allow the auto fill to finish filling the water basin.
 - b. Check the refill system for leaks and repair as needed.
 - c. Ensure the refill system turns off the water about 1 to 1.5" below the top of the basin.
- 16) Turn on the optional fire feature if applicable.
- 17) Finish your project as desired keeping in mind accessibility for maintenance and winterization.

Media

WARNING: For optional fire pit follow the correct fire pit instructions.

WARNING: Media for the water feature is NOT suitable to use as media for the optional fire feature. Use only approved media intended for use with fire appliances.

Failure to follow may result in your media exploding.

WARNING: For water reservoir do not exceed a total weight of 70 lbs. maximum of media in your water basin evenly distributed.

WARRANTY REQUIREMENT: It is recommended to rinse your media thoroughly before putting it in your water reservoir. Your reservoir is equipped with a coarse filter for large debris only. Thoroughly cleaning your media will help keep your water clean and reduce silt build up in your system.

WARRANTY REQUIREMENT: Do not use media in the water feature less than $\frac{1}{2}$ " in size. This may damage the water pump.

Your water basin is designed to have media installed on top of the basin liner. One layer of rock or stone is recommended.

Parts

- a) Water Reservoir
- b) Optional Water Fire Bowl
- c) Optional Fire Feature
- d) Instructions

Operation

WARNING: If your feature includes a fire feature, follow all procedures included with your fire pit.

WARNING: When not in use turn off power supply, water supply and fuel supply when applicable to the unit.

WARNING: Water temperature may be elevated in some configurations.

WARNING: Leaves, sticks, wood, paper, clothing, food etc. should always be kept away from the fire and

START UP

1. **STOP! Read the safety information on “What to Do If Smell Gas” (Pg. 1 of Fire Pit Instructions When Applicable).**
2. Confirm there is no debris in the water reservoir , water feature or optional fire pit (as mentioned in warnings).
3. Turn “ON” main electrical power, water and optional gas to the water reservoir
4. Ensure system is full of water.
5. Turn on water ON
6. Turn on lights ON
7. Turn on fire when applicable

Note: a. Some configurations may require water to be on before the optional fire feature will light.
b. If your unit has the optional fire feature do not leave unattended.

water feature water feature

SHUT DOWN

1. Turn off Water.
2. Turn off Lights.
3. Turn off Fire
4. Turn off Electrical supply, Water supply and Fuel supply for units with the optional fire feature.
5. Cover water basin and fire pit

Maintenance and Winterization

WARNING: Turn off Power, Gas, and Water for all maintenance activities.

WARRANTY REQUIREMENT: Do not use unapproved chemical additives to the water. Chemicals such as chlorine will reduce the pump life and void the warranty.

WARRANTY REQUIREMENT: The water feature must be winterized in areas that drop below freezing.

Water Conditioning:

- 1) The only chemical TOP has testing or recommends is Spa Foundations from Natural Chemistry. Apply 2 teaspoons every 4 weeks. This is to help maintain water clarity. Your application may vary. Too much may cause foaming.

Maintenance:

- 1) For optional fire feature refer to fire pit instructions.
- 2) The water Reservoir must be winterized in areas that drop below freezing temperature.
- 3) Keep any debris out of water reservoir, water feature or optional fire pit- clean as needed.
- 4) Clean filter as needed. Remove filter, rinse out with water and replace.
 - a. Weekly filter cleaning is recommended. Your application may vary.

Winterization/Drain and Cleaning:

- 1) Turn off Water, Electric and Gas for units with optional fire feature.
- 2) Open the drain and allow all water to drain into your local drain.
- 3) Separate the union on the outlet side of the pump allowing it to drain.
- 4) Cover Unit.

Troubleshooting

Below are some potential causes and countermeasures to the symptoms indicated in bold. If still unable to resolve issue, please contact your retailer or certified technician.

WARNING: If your unit is equipped with an optional fire feature refer to TOP fire pit instructions.

Water will not turn on if:

- 1) Not Enough Water.....Pump will not function without sufficient water levels
- 3) No Power.....Ensure there is power to the unit
- 2) Breaker TrippedReset breaker on electrical control box
- 4) Defective Pump.....Replace Pump

Lights will not turn on if:

- 1) No Power.....Ensure there is power is ON
- 2) Breaker Tripped.....Reset breaker on the electrical control box
- 3) LED Box defective.....Replace LED Box
- 4) Defective LightReplace LED

Weak Water Flow If:

- 1) Dirty Filter.....Clean filter
- 2) Ball Valve.....Closed Open ball valve on the outlet side of pump
- 3) Defective Pump.....Replace pump

Water Level Low or High If:

- Clogged Over Flow.....Clean over flow

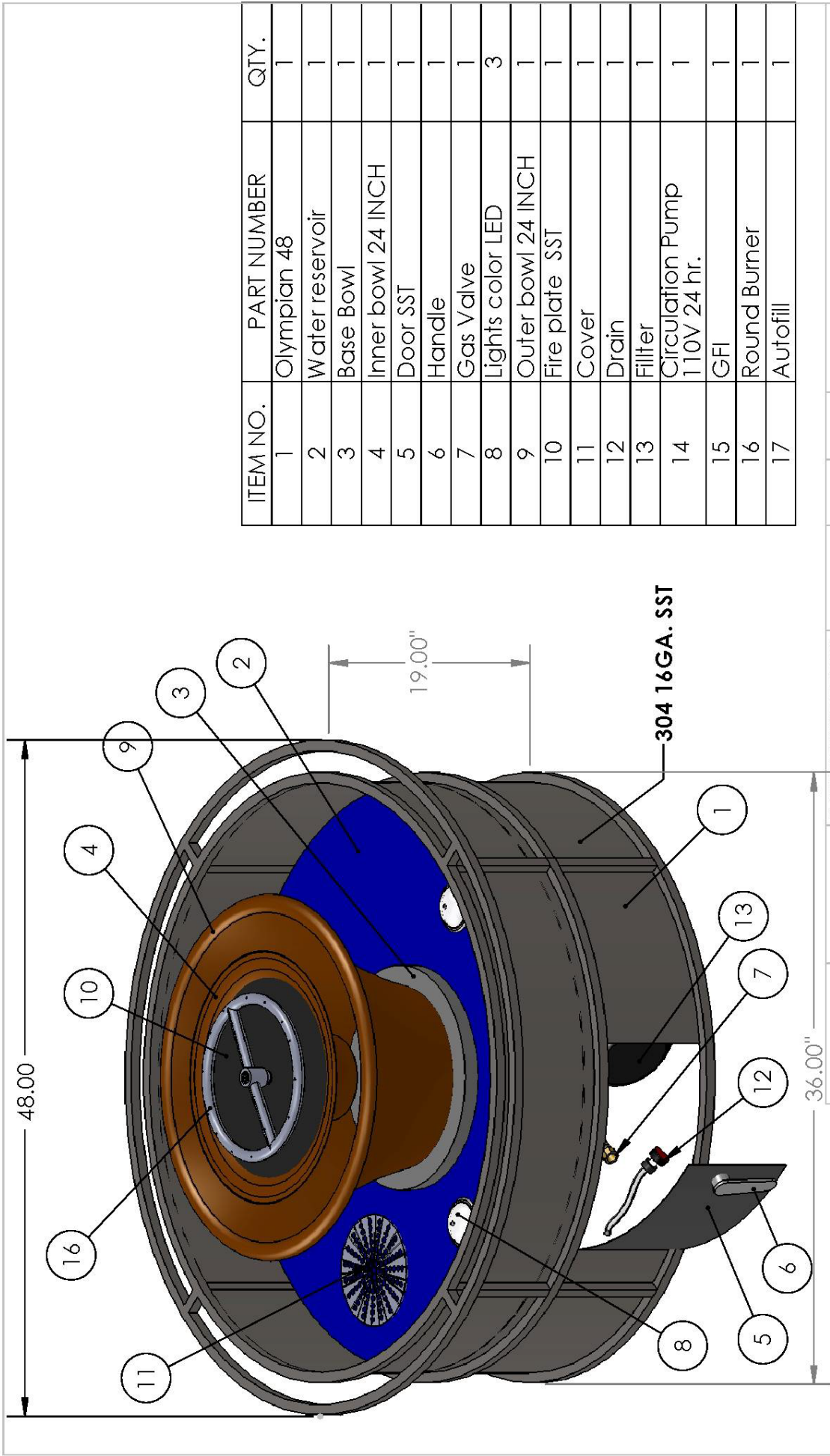
Replacement Parts

Please call The Outdoor Plus customer service for replacement parts.

Warranty

Limited Warranty

- The Outdoor Plus (TOP) warrants its water products against manufacturing defects that prevent safe and correct function for 1 year.
- This commences from the date of original sale / shipment from TOP Ontario, California
- This warranty is for parts and in-house (TOP) labor. The defective product must be sent back to TOP with a Return Merchandise Authorization (RMA) issued by TOP for that specific product and any other additional information for the nature of the defect or warranty claim
- The warranty does not cover items that have been damaged by overheating, modification, abuse, or improper storage. Also ANY Labor ** involving installation or maintenance with the unit is not covered.
- This warranty excludes claims for consequential, indirect-collateral expenses arising from product defects or warranty recovery.



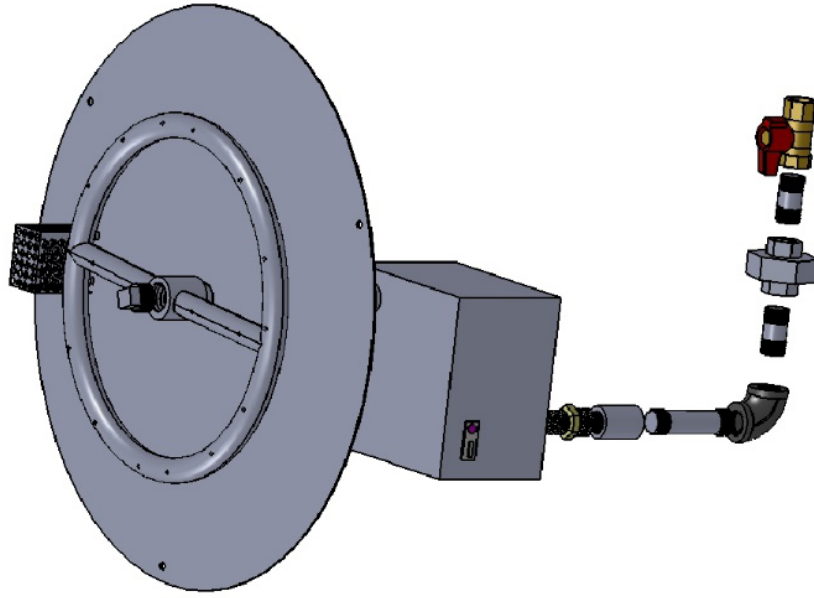
ITEM NO.	PART NUMBER	QTY.
1	Olympian 48	1
2	Water reservoir	1
3	Base Bowl	1
4	Inner bowl 24 INCH	1
5	Door SST	1
6	Handle	1
7	Gas Valve	1
8	Lights color LED	3
9	Outer bowl 24 INCH	1
10	Fire plate SST	1
11	Cover	1
12	Drain	1
13	Filter	1
14	Circulation Pump 110V 24 hr.	1
15	GFI	1
16	Round Burner	1
17	Autofill	1

UNLESS OTHERWISE SPECIFIED:		NAME	DATE
DIMENSIONS ARE IN INCHES	DRAWN	John	3/25/15
TOLERANCES:	CHECKED		
FRACTIONAL: \pm	ENG. APPR.		
ANGULAR: MACH \pm BEND \pm	MFG APPR.		
TWO PLACE DECIMAL \pm	Q.A.		
THREE PLACE DECIMAL \pm	COMMENTS:		
INTERPRET GEOMETRIC TOLERANCING PER:			
MATERIAL			
FINISH			
NEXT ASSY	USED ON		
APPLICATION	DO NOT SCALE DRAWING		

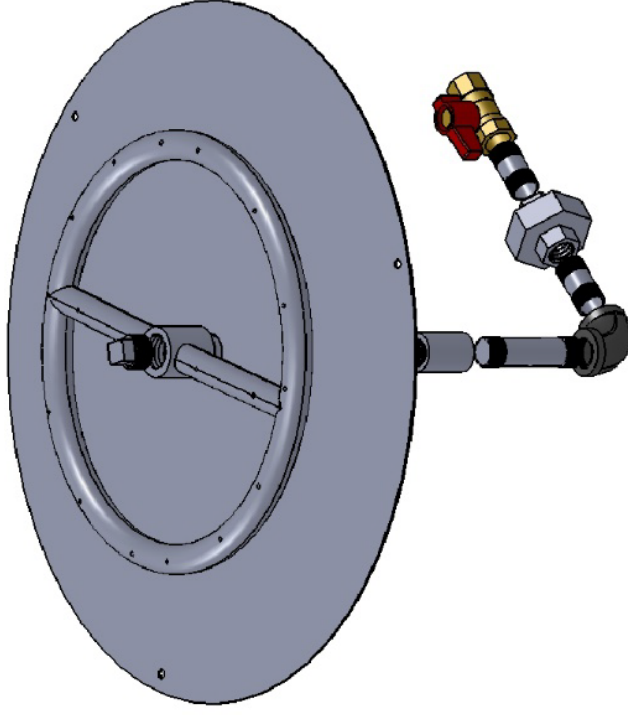
<p>PROPRIETARY AND CONFIDENTIAL THE INFORMATION CONTAINED IN THIS DRAWING IS THE SOLE PROPERTY OF The Outdoor Plus. ANY REPRODUCTION IN PART OR AS A WHOLE WITHOUT THE WRITTEN PERMISSION OF The Outdoor Plus IS PROHIBITED.</p>		<p>SCALE: 1:24</p>	<p>WEIGHT:</p>	<p>SHEET 1 OF 2</p>
<p>SIZE A</p>	<p>DWG. NO.</p>	<p>REV A</p>	<p>1</p>	<p>2</p>

OLYMPIAN 48

Electronic Burner Assembly



Manual Burner Assembly



PROPRIETARY AND CONFIDENTIAL
 THE INFORMATION CONTAINED IN THIS DRAWING IS THE SOLE PROPERTY OF **The Outdoor Plus**. ANY REPRODUCTION IN PART OR AS A WHOLE WITHOUT THE WRITTEN PERMISSION OF **The Outdoor Plus** IS PROHIBITED.

UNLESS OTHERWISE SPECIFIED:		NAME	DATE
DIMENSIONS ARE IN INCHES		John	3/25/15
TOLERANCES:			
FRACTIONAL: *			
ANGULAR: MACH * BEND *			
TWO PLACE DECIMAL *			
THREE PLACE DECIMAL *			
INTERPRET GEOMETRIC TOLERANCING PER:			
MATERIAL			
FINISH			
NEXT ASSY			
USED ON			
APPLICATION			
DO NOT SCALE DRAWING			
DRAWN			
CHECKED			
ENG APPR.			
MFG APPR.			
Q.A.			
COMMENTS:			
TITLE: OLYMPIAN 48			
SIZE	DWG. NO.	REV	
A		A	
SCALE: 1:12			WEIGHT: SHEET 2 OF 2