

Mabel Fire Pit - Metal Collection

Includes door for propane tank storage

36" Mabel Fire Table

OPT-MABCS36	Corten Steel
OPT-MABSS36	Stainless Steel
OPT-MABPC36	Powder Coat
OPT-MABCPR36	Hammered Copper

- » Diameter: 36"
- » Base Diameter: 24"
- » Height: 20"
- » Burning Area: 19"
- » Weight: 90 lbs.
- » BTU: 65K
- » Sugg. Fire Glass: 30 lbs.

60" Mabel Fire Table

OPT-MABCS60	Corten Steel
OPT-MABSS60	Stainless Steel
OPT-MABPC60	Powder Coat
OPT-MABCPR60	Hammered Copper

- » Diameter: 60"
- » Base Diameter: 42"
- » Height: 20"
- » Burning Area: 25"
- » Weight: 175 lbs.
- » BTU: 160K
- » Sugg. Fire Glass: 55 lbs.

48" Mabel Fire Table

OPT-MABCS48	Corten Steel
OPT-MABSS48	Stainless Steel
OPT-MABPC48	Powder Coat
OPT-MABCPR48	Hammered Copper

- » Diameter: 48"
- » Base Diameter: 30"
- » Height: 20"
- » Burning Area: 19"
- » Weight: 120 lbs.
- » BTU: 65K
- » Sugg. Fire Glass: 30 lbs.

Bullet Burner Upgrades

Unit	Stainless Steel Bullet Burner
36" Mabel	OPT-BRDSS12
48" Mabel	OPT-BRDSS12
60" Mabel	OPT-BRDSS18



Optional Accessories

Unit	Canvas Cover	Stainless Lid
36" Mabel	OPT-CVR36R-20H	OPT-23RC
48" Mabel	OPT-CVR48R-20H	OPT-23RC
60" Mabel	OPT-CVR60R-20H	OPT-29RC



PEWTER POWDER COAT MODEL SHOWN



STAINLESS STEEL MODEL SHOWN



CORTEN STEEL MODEL SHOWN

Mabel Black & White Fire Table - Powder Coat

Includes door for propane tank storage

36" Mabel Fire Table

OPT-MABPC36-BWC	Match Lit
OPT-MABPC36FSML-BWC	Flame Sense
OPT-MABPC36EKIT-BWC	Plug & Play

- » Diameter: 36"
- » Base Diameter: 24"
- » Height: 20"
- » Burning Area: 19"
- » Weight: 90 lbs.
- » BTU: 65K
- » Sugg. Fire Glass: 30 lbs.

60" Mabel Fire Table

OPT-MABPC60-BWC	Match Lit
OPT-MABPC60FSML-BWC	Flame Sense
OPT-MABPC60EKIT-BWC	Plug & Play

- » Diameter: 60"
- » Base Diameter: 42"
- » Height: 20"
- » Burning Area: 25"
- » Weight: 175 lbs.
- » BTU: 70K
- » Sugg. Fire Glass: 55 lbs.

48" Mabel Fire Table

OPT-MABPC48-BWC	Match Lit
OPT-MABPC48FSML-BWC	Flame Sense
OPT-MABPC48EKIT-BWC	Plug & Play

- » Diameter: 48"
- » Base Diameter: 30"
- » Height: 20"
- » Burning Area: 19"
- » Weight: 120 lbs.
- » BTU: 65K
- » Sugg. Fire Glass: 30 lbs.



Bullet Burner Upgrades

Unit	Stainless Steel Bullet Burner
36" Mabel	OPT-BRDSS12
48" Mabel	OPT-BRDSS12
60" Mabel	OPT-BRDSS18

Optional Accessories

Unit	Canvas Cover	Stainless Lid
36" Mabel	OPT-CVR36R-20H	OPT-23RC
48" Mabel	OPT-CVR48R-20H	OPT-23RC
60" Mabel	OPT-CVR60R-20H	OPT-29RC



BLACK & WHITE POWDER COAT MODEL SHOWN

Salinas Fire Pit - Metal Collection

Features access door for propane tank storage.

48" X 28" Salinas Fire Table

OPT-SALCPR48	Hammered Copper
OPT-SALCS48	Corten Steel
OPT-SALSS48	Stainless Steel
OPT-SALPC48	Powder Coat

- » Dimensions: 48" x 28"
- » Height: 21"
- » Overhang: 3"
- » Burning Area: 30" x 10" x 2"
- » BTUs: 40K
- » Suggested Fire Glass: 35 lbs.



BLACK POWDER COAT SHOWN

60" X 28" Salinas Fire Table

OPT-SALCPR60	Hammered Copper
OPT-SALCS60	Corten Steel
OPT-SALSS60	Stainless Steel
OPT-SALPC60	Powder Coat

- » Dimensions: 60" x 28"
- » Height: 21"
- » Overhang: 3"
- » Burning Area: 42" x 10" x 2"
- » BTUs: 60K
- » Suggested Fire Glass: 45 lbs.



CORTEN STEEL SHOWN

Bullet Burner Upgrades

Unit	Stainless Steel Bullet Burner
48" Salinas	OPT-B24SST
60" Salinas	OPT-B36SST

Optional Accessories

Unit	Canvas Cover	Stainless Lid	Glass Wind Guard
48" Salinas	OPT-CVR-4828-21H	OPT-RC1232	OPT-WG-3414
60" Salinas	OPT-CVR-6028-21H	OPT-RC1244	OPT-WG-4614



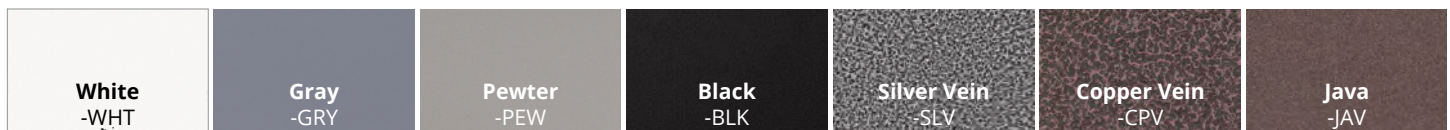
STAINLESS STEEL SHOWN



GRAY POWDER COAT

POWDER COAT COLOR OPTIONS

When ordering, specify the powder coat color by adding the color code to the end of the Part #. **Example:** White Coronado Fire Pit = OPT-CORPC48-WHT





Bella Fire Pit - Powder Coat & Stainless Steel

Includes door for propane tank storage

36" Bella Fire Table

OPT-BELCPR36	Hammered Copper
OPT-BELCS36	Corten Steel
OPT-BELSS36	Stainless Steel
OPT-BELPC36	Powder Coat Steel

- » Dimensions: 36" x 36"
- » Base Dimensions: 18" x 18"
- » Height: 24"
- » Burning Area: 16"
- » Weight: 90 lbs.
- » BTU: 65K
- » Sugg. Fire Glass: 30 lbs.

60" Bella Fire Table

OPT-BELCPR60	Hammered Copper
OPT-BELCS	Corten Steel
OPT-BELSS60	Stainless Steel
OPT-BELPC60	Powder Coat Steel

- » Dimensions: 60" x 60"
- » Base Dimensions: 30" x 30"
- » Height: 24"
- » Burning Area: 30"
- » Weight: 210 lbs.
- » BTU: 160K
- » Sugg. Fire Glass: 30 lbs.



Bullet Burner Upgrades

Unit	Stainless Steel Bullet Burner
36" Bella	OPT-BRDSS12
42" Bella	OPT-BRDSS18

Optional Accessories

Unit	Canvas Cover	Stainless Lid	Glass Wind Guard
36" Bella	OPT-CVR-3636-24H	OPT-18SC	OPT-WG-2020
60" Bella	OPT-CVR-6060-24H	OPT-26SC	OPT-WG-2828

Linear Bella Fire Pit - Metal Collection

Includes door for propane tank storage



48 x 30" Bella Fire Table

OPT-BELLCPR4830	Hammered Copper
OPT-BELCS4830	Corten Steel
OPT-BELSS4830	Stainless Steel
OPT-BELLPC4830	Powder Coat Steel

- » Dimensions: 48" x 30"
- » Base Dimensions: 30" x 18"
- » Height: 24"
- » Burning Area: 18" x 8"
- » Weight: 110 lbs.
- » BTU: 20K
- » Sugg. Fire Glass: 30 lbs.

60 x 36" Bella Fire Table

OPT-BELLCPR6036	Hammered Copper
OPT-BELCS6036	Corten Steel
OPT-BELSS6036	Stainless Steel
OPT-BELLPC6036	Powder Coat Steel

- » Dimensions: 60" x 36"
- » Base Dimensions: 42" x 18"
- » Height: 24"
- » Burning Area: 30" x 8"
- » Weight: 190 lbs.
- » BTU: 40K
- » Sugg. Fire Glass: 30 lbs.



72 x 36" Bella Fire Table

OPT-BELCPR7236	Hammered Copper
OPT-BELCS7236	Corten Steel
OPT-BELSS7236	Stainless Steel
OPT-BELLPC7236	Powder Coat Steel

- » Dimensions: 72" x 36"
- » Base Dimensions: 54" x 18"
- » Height: 30"
- » Burning Area: 42" x 8"
- » Weight: 250lbs.
- » BTU: 60K
- » Sugg. Fire Glass: 30 lbs.

Bullet Burner Upgrades

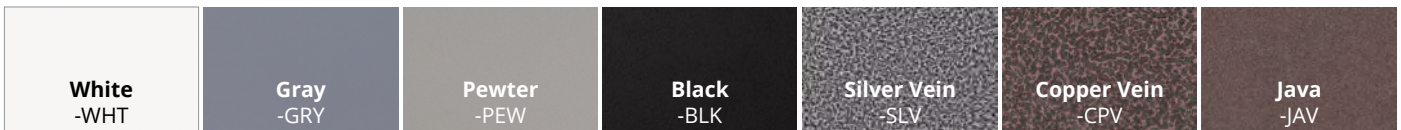
Unit	Stainless Steel Bullet Burner
48" x 30" Bella	OPT-B12SST
60" x 36" Bella	OPT-B24SST
72" x 36" Bella	OPT-B36SST

Optional Accessories

Unit	Canvas Cover	Stainless Lid	Glass Wind Guard
48" x 30" Bella	OPT-CVR4830-24H	OPT-RC1020	OPT-WG-2212
60" x 36" Bella	OPT-CVR6036-24H	OPT-RC1032	OPT-WG-3412
72" x 36" Bella	OPT-CVR7236-24H	OPT-RC1044	OPT-WG-4612

POWDER COAT COLOR OPTIONS

When ordering, specify the powder coat color by adding the color code to the end of the Part #. **Example:** White Coronado Fire Pit = OPT-CORPC48-WHT



FIRE PITS & FIRE TABLES

All fire pits include: Fire Pan, Burner, Key Valve, Key, Gas Hoses, Lava Rock.
For Match Lit w/ Flame Sense add "-FSML" to part #. For Plug & Play Ignition, add "-EKIT"



Fremont Fire Pit - Metal Collection - 15" Tall

Does not include door for propane tank storage.

48" x 32" Fremont Fire Pit

OPT-FRMCPR4815 Hammered Copper
OPT-FRMC4815 Corten Steel
OPT-FRMSS4815 Stainless Steel
OPT-FRMP4815 Powder Coat

60" x 32" Fremont Fire Pit

OPT-FRMCPR6015 Hammered Copper
OPT-FRMC6015 Corten Steel
OPT-FRMSS6015 Stainless Steel
OPT-FRMP6015 Powder Coat

72" x 32" Fremont Fire Pit

OPT-FRMCPR7215 Hammered Copper
OPT-FRMC7215 Corten Steel
OPT-FRMSS7215 Stainless Steel
OPT-FRMP7215 Powder Coat

84" x 32" Fremont Fire Pit

OPT-FRMCPR8415 Hammered Copper
OPT-FRMC8415 Corten Steel
OPT-FRMSS8415 Stainless Steel
OPT-FRMP8415 Powder Coat

Fremont Fire Pit - Metal Collection - 24" Tall

Includes access door for 20 lbs propane tank storage

48" x 32" Fremont Fire Pit

OPT-FRMCPR4824 Hammered Copper
OPT-FRMC4824 Corten Steel
OPT-FRMSS4824 Stainless Steel
OPT-FRMP4824 Powder Coat

60" x 32" Fremont Fire Pit

OPT-FRMCPR6024 Hammered Copper
OPT-FRMC6024 Corten Steel
OPT-FRMSS6024 Stainless Steel
OPT-FRMP6024 Powder Coat

72" x 32" Fremont Fire Pit

OPT-FRMCPR7224 Hammered Copper
OPT-FRMC7224 Corten Steel
OPT-FRMSS7224 Stainless Steel
OPT-FRMP7224 Powder Coat

84" x 32" Fremont Fire Pit

OPT-FRMCPR8424 Hammered Copper
OPT-FRMC8424 Corten Steel
OPT-FRMSS8424 Stainless Steel
OPT-FRMP8424 Powder Coat

- » Dimensions: 48" x 32"
- » Height: 15" / 24"
- » Base Dimensions: 36" x 20"
- » Burning Area: 30" x 10"
- » Weight: 85 lbs. / 105"lbs
- » BTU: 40K
- » Sugg. Fire Glass: 25 lbs.

- » Dimensions: 60" x 32"
- » Height: 15" / 24"
- » Base Dimensions: 48" x 20"
- » Burning Area: 42" x 10"
- » Weight: 100 lbs. / 120 lbs
- » BTU: 60K
- » Sugg. Fire Glass: lbs.

- » Dimensions: 72" x 32"
- » Height: 15" / 24"
- » Base Dimensions: 60" x 20"
- » Burning Area: 54" x 10"
- » Weight: 115 lbs. / 135 lbs
- » BTU: 80K
- » Sugg. Fire Glass: lbs.

- » Dimensions: 84" x 32"
- » Height: 15" / 24"
- » Base Dimensions: 72" x 20"
- » Burning Area: 66" x 10"
- » Weight: 130 lbs. / 155 lbs
- » BTU: 100K
- » Sugg. Fire Glass: lbs.

Optional Accessories

Unit	Canvas Cover-15"	Canvas Cover-24"	Stainless Lid	Glass Wind Guard
48" Fremont	OPT-CVR-4832-15H	OPT-CVR-4832-24H	OPT-RC1232	OPT-WG-3414
60" Fremont	OPT-CVR-6032-15H	OPT-CVR-6032-24H	OPT-RC1244	OPT-WG-4614
72" Fremont	OPT-CVR-7232-15H	OPT-CVR-7232-24H	OPT-RC1256	OPT-WG-5814
84" Fremont	OPT-CVR-8432-15H	OPT-CVR-8432-24H	OPT-RC1268	OPT-WG-7014

Bullet Burner Upgrades

Unit	Stainless Steel Bullet Burner
48" Fremont	OPT-B24SST
60" Fremont	OPT-B36SST
72" Fremont	OPT-B48SST
84" Fremont	OPT-B60SST

Sonoma Fire Pit - Concrete

Cannot Store Propane Tank

OPT-SONMA38 Match Lit Ignition
OPT-SONMA38FSML Flame Sense
OPT-SONMA38EKIT Plug & Play

- » Diameter: 38"
- » Height: 25"
- » Base Diameter: 17.5"
- » Burn Area Diameter: 32"
- » Weight: 285 lbs.
- » BTU: 160K
- » Sugg. Fire Glass: 75 lbs.

Bullet Burner Upgrades

Unit	Stainless Steel Bullet Burner
38" Sonoma	OPT-BRDSS18

Optional Accessories

Unit	Canvas Cover	Stainless Lid
Sonoma	OPT-CVR-38R-25H	OPT-36RC



BROWN FINISH SHOWN

Sienna Fire Pit - Concrete

Cannot store propane tank.

OPT-RF37 Match Lit Ignition
OPT-RF37FSML Flame Sense
OPT-RF37EKIT Plug & Play

- » Diameter: 37"
- » Height: 25"
- » Base Diameter: 17.5"
- » Burn Area Diameter: 20"
- » Weight: 285 lbs.
- » BTU: 45K
- » Sugg. Fire Glass: 25 lbs.

Bullet Burner Upgrades

Unit	Stainless Steel Bullet Burner
37" Sienna	OPT-BRDSS8

Optional Accessories

Canvas Cover	OPT-CVR-37R-25H
Stainless Steel Lid	OPT-24RC



CHESTNUT FINISH SHOWN

FIRE PITS & FIRE TABLES

All fire pits include: Fire Pan, Burner, Key Valve, Key, Gas Hoses, Lava Rock.
For Match Lit w/ Flame Sense add "-FSML" to part #. For Plug & Play Ignition, add "-EKIT"



60" ASH FINISH

Del Mar Fire Pit - Concrete

Cannot Store Propane Tank

48" Del Mar

OPT-CORGFRC48 Match Lit
OPT-CORGFRC48FSML Flame Sense
OPT-CORGFRC48EKIT Plug & Play

- » Dimensions: 48" x 28"
- » Height: 15"
- » Burning Area: 30" x 10"
- » Weight: 375 lbs.
- » BTU: 40K
- » Sugg. Fire Glass: 50 lbs.

84" Del Mar

OPT-DEL8428 Match Lit
OPT-DEL8428FSML Flame Sense
OPT-DEL8428EKIT Plug & Play

- » Dimensions: 84" x 28"
- » Height: 15"
- » Burning Area: 66" x 10"
- » Weight: 650 lbs.
- » BTU: 90K
- » Sugg. Fire Glass: 100 lbs.

60" Del Mar

OPT-DEL6028 Match Lit
OPT-DEL6028FSML Flame Sense
OPT-DEL6028EKIT Plug & Play

- » Dimensions: 60" x 28"
- » Height: 15"
- » Burning Area: 42" x 10"
- » Weight: 435 lbs.
- » BTU: 50K
- » Sugg. Fire Glass: 50 lbs.

96" Del Mar

OPT-DEL9628 Match Lit
OPT-DEL9628FSML Flame Sense
OPT-DEL9628EKIT Plug & Play

- » Dimensions: 96" x 28"
- » Height: 15"
- » Burning Area: 78" x 10"
- » Weight: 760 lbs.
- » BTU: 240K
- » Sugg. Fire Glass: 100 lbs.

72" Del Mar

OPT-DEL7228 Match Lit
OPT-DEL7228FSML Flame Sense
OPT-DEL7228EKIT Plug & Play

- » Dimensions: 72" x 28"
- » Height: 15"
- » Burning Area: 54" x 10"
- » Weight: 510 lbs.
- » BTU: 70K
- » Sugg. Fire Glass: 75 lbs.

Bullet Burner Upgrades

Unit	Stainless Steel Bullet Burner
48" Del Mar	OPT-B24SST
60" Del Mar	OPT-B30SST
72" Del Mar	OPT-B42SST
84" Del Mar	OPT-B54SST
96" Del Mar	OPT-B72SST

Optional Accessories

Unit	Canvas Cover	Stainless Lid	Glass Wind Guard
48" Del Mar	OPT-CVR-4828-15H	OPT-RC1232	OPT-WG-3414
60" Del Mar	OPT-CVR-6028-15H	OPT-RC1244	OPT-WG-4614
72" Del Mar	OPT-CVR-7228-15H	OPT-RC1256	OPT-WG-5814
84" Del Mar	OPT-CVR-8428-15H	OPT-RC1268	OPT-WG-7014
96" Del Mar	OPT-CVR-9628-15H	OPT-RC1280	OPT-WG-8214



96" DEL MAR
BLACK CONCRETE

Newport Fire Pit - Concrete & Metal Collection

Includes Stainless Steel Door For Propane Tank Storage.



6' Newport Fire Table

OPT-NPTT72	Match Lit Ignition
OPT-NPTT72FSML	Flame Sense
OPT-NPTT72EKIT	Plug & Play
OPT-NPTTCPR72	Hammered Copper
OPT-NPTTCS72	Corten Steel
OPT-NPTTSS72	Stainless Steel
OPT-NPTTPC72	Powder Coat

- » Dimensions: 72" x 36"
- » Height: 30"
- » Burning Area: 48" x 10"
- » Overhang: 12"
- » Weight: 1100 lbs.
- » BTU: 70K
- » Sugg. Fire Glass: 125 lbs.

10' Newport Fire Table

OPT-NPTT120	Match Lit Ignition
OPT-NPTT120FSML	Flame Sense
OPT-NPTT120EKIT	Plug & Play
OPT-NPTTCPR120	Hammered Copper
OPT-NPTTCS120	Corten Steel
OPT-NPTTSS120	Stainless Steel
OPT-NPTTPC120	Powder Coat

- » Dimensions: 120" x 48"
- » Height: 30"
- » Burning Area: 78" x 12"
- » Overhang: 12"
- » Weight: 1465 lbs.
- » BTU: 120K
- » Sugg. Fire Glass: 125 lbs.



12' BROWN

12' Newport Fire Table

OPT-NPTT144	Match Lit Ignition
OPT-NPTT144FSML	Flame Sense
OPT-NPTT144EKIT	Plug & Play
OPT-NPTTCPR144	Hammered Copper
OPT-NPTTCS144	Corten Steel
OPT-NPTTSS144	Stainless Steel
OPT-NPTTPC144	Powder Coat

- » Dimensions: 144" x 48"
- » Height: 30"
- » Burning Area: 102" x 12"
- » Overhang: 12"
- » Weight: 1750 lbs.
- » BTU: 240K
- » Sugg. Fire Glass: 175 lbs.

Bullet Burner Upgrades

Unit	Stainless Steel Bullet Burner
6' Newport	OPT-B42SST
10' Newport	OPT-B72SST
12' Newport	OPT-B96SST

Optional Accessories

Unit	Canvas Cover	Stainless Lid	Glass Wind Guard
6' Newport	OPT-CVR-7236-30H	OPT-RC1250	OPT-WG-5214
10' Newport	OPT-CVR-12048-30H	OPT-RC1480	OPT-WG-8216
12' Newport	OPT-CVR-14448-30H	OPT-RC14104	OPT-WG-10616



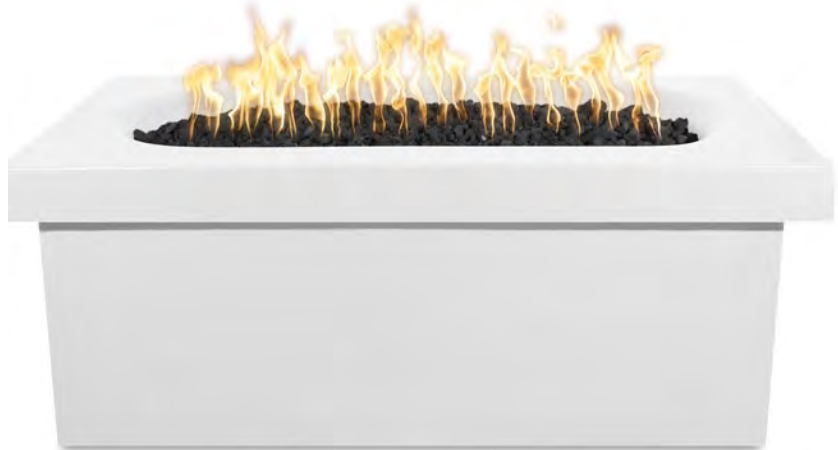
CUSTOM NEWPORT SIZE

Linear Ramona Fire Table - Concrete

Includes Stainless Steel Door For Propane Tank Storage.

OPT-RMNRT60 Match Lit
OPT-RMNRT60FSML Flame Sense
OPT-RMNRT60EKIT Plug & Play

- » Dimensions: 60" x 24"
- » Height: 24"
- » Base: 54" x 18"
- » Burn Area: 48" x 12"
- » Weight: 395 lbs.
- » BTU: 60K
- » Sugg. Fire Glass: 50 lbs.



Bullet Burner Upgrades

Unit	Stainless Steel Bullet Burner
60" Linear Ramona	OPT-B36SST

Optional Accessories

Canvas Cover	OPT-CVR-6024-24H
Stainless Steel Lid	OPT-RC1652

Square Ramona Fire Table - Concrete

Includes Stainless Steel Door For Propane Tank Storage.

OPT-RMNSQ36 Match Lit
OPT-RMNSQ36FSML Flame Sense
OPT-RMNSQ36EKIT Plug & Play

- » Dimensions: 36" x 36"
- » Height: 24"
- » Base: 30" x 30"
- » Burn Area: 17" x 17"
- » Weight: 355 lbs.
- » BTU: 55K
- » Sugg. Fire Glass: 25 lbs.



Bullet Burner Upgrades

Unit	Stainless Steel Bullet Burner
36" Square Ramona	OPT-BRDSS10

Optional Accessories

Canvas Cover	OPT-CVR-3636-24H
Stainless Steel Lid	OPT-24SC

Metallic Finishes and Rustic Finishes are available at an extra charge

When ordering, specify the concrete color by adding the color code to the end of the Part #. Example: 27" Brown Sedona Water Bowl = OPT-27RWO-BRN

Black -BLK	Ash -ASH	Natural Gray -NGY	Gray -GRY	White Limestone -LIM	Chocolate -CHC	Chestnut -CST	Brown -BRN	Vanilla -VAN
Rustic Gray -RGR	Moss Stone -RMS	Rustic White -RWH	Coffee -RCF	Slate -MSL	Silver -MSV	Pearl -MPR	Bronze -MBR	Copper -MCP

Angelus Fire Pit - Concrete & Metal Colection

Includes Stainless Steel Door For Propane Tank Storage.

OPT-AGLGF60 Match Lit
OPT-AGLGF60FSML Flame Sense
OPT-AGLGF60EKIT Plug & Play

- » Dimensions: 60" x 36"
- » Height: 24"
- » Base: 50" x 24"
- » Burn Area: 48" x 10"
- » Weight: 395 lbs.
- » BTU: 70K
- » Sugg. Fire Glass: 75 lbs.



Bullet Burner Upgrades

Unit	Stainless Steel Bullet Burner
60" Angelus	OPT-B42SST

Optional Accessories

Canvas Cover	OPT-CVR-6036-24H
Stainless Steel Lid	OPT-RC1250
Glass Wind Guard	OPT-WG-5214

Balboa Fire Table - Concrete - 15" Tall

Cannot Store Propane Tank

OPT-BAL48 Match Lit
OPT-BAL48FSML Flame Sense
OPT-BAL48EKIT Plug & Play

- » Dimensions: 48" x 48"
- » Height: 15"
- » Base: 30" x 30"
- » Burn Area: 19"
- » Weight: 315 lbs.
- » BTU: 65K
- » Sugg. Fire Glass: 25 lbs.



Bullet Burner Upgrades

Unit	Stainless Steel Bullet Burner
48" Balboa	OPT-BRDSS12

Optional Accessories

Unit	Canvas Cover	Stainless Lid
48" Balboa	OPT-CVR-4848-15H	OPT-28RC

Metallic Finishes and Rustic Finishes are available at an extra charge

When ordering, specify the concrete color by adding the color code to the end of the Part #. Example: 27" Brown Sedona Water Bowl = OPT-27RWO-BRN

Black -BLK	Ash -ASH	Natural Gray -NGY	Gray -GRY	White Limestone -LIM	Chocolate -CHC	Chestnut -CST	Brown -BRN	Vanilla -VAN
Rustic Gray -RGR	Moss Stone -RMS	Rustic White -RWH	Coffee -RCF	Slate -MSL	Silver -MSV	Pearl -MPR	Bronze -MBR	Copper -MCP



Uxmal Fire Pit - GFRC & Metal

OPT-UXM30	Match Lit
OPT-UXM30E12V	12V Electronic Ignition
OPT-UXMCP30	Hammered Copper
OPT-UXMCS30	Corten Steel
OPT-UXMSS30	Stainless Steel
OPT-UXMPC30	Powder Coat

- » Dimensions: 33" x 33"
- » Height: 22"
- » Base: 27" x 27"
- » Burn Area: 27.5"
- » BTU: 65K
- » Sugg. Fire Glass: 50 lbs.

Bullet Burner Upgrades

Unit	Stainless Steel Bullet Burner
Copa	OPT-B12RDSS

Optional Accessories

Canvas Cover	OPT-CVR-3333-22H
Stainless Steel Lid	OPT-29RC



Lucia Fire Pit - Concrete

OPT-LUC30	Match Lit
OPT-LUC30E12V	12V Electronic Ignition

- » Dimensions: 31" Diameter
- » Height: 20"
- » Burn Area: 20" Diameter
- » Base: 20" Diameter
- » Burn Area: 20" Diameter
- » BTU: 65K
- » Sugg. Fire Glass: 50 lbs.

Bullet Burner Upgrades

Unit	Stainless Steel Bullet Burner
Lucia	OPT-B12RDSS

Optional Accessories

Canvas Cover	OPT-BCVR-31R-20H
Stainless Steel Lid	OPT-22RC

Metallic Finishes and Rustic Finishes are available at an extra charge

When ordering, specify the concrete color by adding the color code to the end of the Part #. Example: 27" Brown Sedona Water Bowl = OPT-27RWO-BRN

Black -BLK	Ash -ASH	Natural Gray -NGY	Gray -GRY	White Limestone -LIM	Chocolate -CHC	Chestnut -CST	Brown -BRN	Vanilla -VAN
Rustic Gray -RGR	Moss Stone -RMS	Rustic White -RWH	Coffee -RCF	Slate -MSL	Silver -MSV	Pearl -MPR	Bronze -MBR	Copper -MCP



Copa Fire Pit - Concrete

OPT-COPA32 Match Lit
OPT-COPA32E12V 12V Electronic Ignition

- » Dimensions: 33" Diameter
- » Height: 22"
- » Burn Area: 27.5"
- » Base: 27" Diameter
- » BTU: 65K
- » Sugg. Fire Glass: 50 lbs.

Bullet Burner Upgrades

Unit	Stainless Steel Bullet Burner
33" Copa	OPT-B12RDSS

Optional Accessories

Canvas Cover	OPT-BCVR-33R-22H
Stainless Steel Lid	OPT-29RC

Concrete Fire Pillars



Baston Fire Pillar With Door

OPT-BSTON20AD Match Lit
OPT-BSTON20ADFSML Flame Sense
OPT-BSTON20ADEKIT Plug & Play

Baston Fire Pillar No Door

OPT-BSTON20 Match Lit
OPT-BSTON20FSML Flame Sense
OPT-BSTON20EKIT Plug & Play

- » Dimensions: 20" x 20"
- » Height: 33"
- » Base: 15"
- » Burn Area: 13"
- » Weight: 145 lbs.
- » BTU: 45K
- » Sugg. Fire Glass: 25 lbs.



Bullet Burner Upgrades

Unit	Stainless Steel Bullet Burner
Baston	OPT-BRDSS8

Optional Accessories

Canvas Cover	OPT-CVR-2020-33H
--------------	------------------

Access door for propane tank optional



Castillo Fire Pillar With Door

OPT-CSTO22AD Match Lit
OPT-CSTO22ADFSML Flame Sense
OPT-CSTO22ADEKIT Plug & Play

Castillo Fire Pillar No Door

OPT-CSTO22 Match Lit
OPT-CSTO22FSML Flame Sense
OPT-CSTO22EKIT Plug & Play

- » Diameter: 22"
- » Height: 33"
- » Base: 13"
- » Burn Area: 18"
- » Weight: 125 lbs.
- » BTU: 45K
- » Sugg. Fire Glass: 25 lbs.



Bullet Burner Upgrades

Unit	Stainless Steel Bullet Burner
Castillo	OPT-BRDSS12

Optional Accessories

Canvas Cover	OPT-CVR-22R-33H
--------------	-----------------

Access door for propane tank optional

Metallic Finishes and Rustic Finishes are available at an extra charge

When ordering, specify the concrete color by adding the color code to the end of the Part #. Example: 27" Brown Sedona Water Bowl = OPT-27RWO-BRN

Black -BLK	Ash -ASH	Natural Gray -NGY	Gray -GRY	White Limestone -LIM	Chocolate -CHC	Chestnut -CST	Brown -BRN	Vanilla -VAN
Rustic Gray -RGR	Moss Stone -RMS	Rustic White -RWH	Coffee -RCF	Slate -MSL	Silver -MSV	Pearl -MPR	Bronze -MBR	Copper -MCP

FIRE PITS & FIRE TABLES

All fire pits include: Fire Pan, Burner, Key Valve, Key, Gas Hoses, Lava Rock.
For Match Lit w/ Flame Sense add "-FSML" to part #. For Plug & Play Ignition, add "-EKIT"



EBONY SHOWN

Plymouth Wood Grain Fire Pit - 16" Tall - Concrete

Does not include door for propane tank storage.

48" x 28" Plymouth Fire Pit

OPT-PLM4828LW Match Lit Ignition
OPT-PLM4828LWFMSML Flame Sense
OPT-PLM4828LWEKIT Plug & Play

60" x 28" Plymouth Fire Pit

OPT-PLM6028LW Match Lit Ignition
OPT-PLM6028LWFMSML Flame Sense
OPT-PLM6028LWEKIT Plug & Play

72" x 28" Plymouth Fire Pit

OPT-PLM7228LW Match Lit Ignition
OPT-PLM7228LWFMSML Flame Sense
OPT-PLM7228LWEKIT Plug & Play

84" x 28" Plymouth Fire Pit

OPT-PLM8428LW Match Lit Ignition
OPT-PLM8428LWFMSML Flame Sense
OPT-PLM8428LWEKIT Plug & Play

Plymouth Wood Grain Fire Pit - 24" Tall - Concrete

Includes access door for 20 lbs propane tank storage

48" x 28" Plymouth Fire Pit

OPT-PLM4828 Match Lit Ignition
OPT-PLM4828FSML Flame Sense
OPT-PLM4828EKIT Plug & Play

60" x 28" Plymouth Fire Pit

OPT-PLM6028 Match Lit Ignition
OPT-PLM6028FSML Flame Sense
OPT-PLM6028EKIT Plug & Play

72" x 28" Plymouth Fire Pit

OPT-PLM7228 Match Lit Ignition
OPT-PLM7228FSML Flame Sense
OPT-PLM7228EKIT Plug & Play

84" x 28" Plymouth Fire Pit

OPT-PLM8428 Match Lit Ignition
OPT-PLM8428FSML Flame Sense
OPT-PLM8428EKIT Plug & Play

- » Dimensions: 48" x 28"
- » Height: 16" / 24"
- » Base Dimensions: 38" x 18"
- » Burn Area: 30" x 10"
- » BTUs: 40K
- » Sugg. Fire Glass: 35 lbs.

- » Dimensions: 60" x 28"
- » Height: 16" / 24"
- » Base Dimensions: 50" x 18"
- » Burn Area: 42" x 10"
- » BTUs: 50K
- » Sugg. Fire Glass: 35 lbs.

- » Dimensions: 72" x 28"
- » Height: 16" / 24"
- » Base Dimensions: 62" x 18"
- » Burn Area: 54" x 10"
- » BTUs: 60K
- » Sugg. Fire Glass: 35 lbs.

- » Dimensions: 84" x 28"
- » Height: 16" / 24"
- » Base Dimensions: 74" x 18"
- » Burn Area: 66" x 10"
- » BTUs: 70K
- » Sugg. Fire Glass: 35 lbs.

Optional Accessories

Unit	Canvas Cover	Stainless Lid	Glass Wind Guard
48" Plymouth	OPT-CVR-4828	OPT-RC1232	OPT-WG-3414
60" Plymouth	OPT-CVR-6028	OPT-RC1244	OPT-WG-4614
72" Plymouth	OPT-CVR-7228	OPT-RC1256	OPT-WG-5814
84" Plymouth	OPT-CVR-8428	OPT-RC1268	OPT-WG-7014

Bullet Burner Upgrades

Unit	Stainless Steel Bullet Burner
48" Plymouth	OPT-B24SST
60" Plymouth	OPT-B30SST
72" Plymouth	OPT-B36SST
84" Plymouth	OPT-B42SST



48" PLYMOUTH - EBONY FINISH

Square Plymouth Fire Pit - 16" Tall - Concrete

Does not include door for propane tank storage.

36" x 36" Plymouth Fire Pit

OPT-PLMS36LW Match Lit Ignition
OPT-PLMS36LWFSML Flame Sense
OPT-PLMS36LWEKIT Plug & Play

48" x 48" Plymouth Fire Pit

OPT-PLMS48LW Match Lit Ignition
OPT-PLMS48LWFSML Flame Sense
OPT-PLMS48LWEKIT Plug & Play



Square Plymouth Fire Pit - 24" Tall - Concrete

Includes access door for 20 lbs propane tank storage

36" x 36" Plymouth Fire Pit

OPT-PLMS36 Match Lit Ignition
OPT-PLMS36FSML Flame Sense
OPT-PLMS36EKIT Plug & Play

48" x 48" Plymouth Fire Pit

OPT-PLMS48 Match Lit Ignition
OPT-PLMS48FSML Flame Sense
OPT-PLMS48EKIT Plug & Play

- » Dimensions: 36" x 36"
- » Height: 16" / 24"
- » Burn Area: 18"
- » BTUs: 65K
- » Sugg. Fire Glass: 35 lbs.

- » Dimensions: 48" x 48"
- » Height: 16" / 24"
- » Burn Area: 24"
- » BTUs: 65K
- » Sugg. Fire Glass: 35 lbs.

Bullet Burner Upgrades

Unit	Stainless Steel Bullet Burner
36" Plymouth	OPT-BRDSS12
48" Plymouth	OPT-BRDSS18



Optional Accessories

Unit	Canvas Cover - 16"	Canvas Cover - 24"	Stainless Lid	Glass Wind Guard
36" Plymouth	OPT-CVR-3636-16H	OPT-CVR-3636-24H	OPT-20SC	OPT-WG2222
48" Plymouth	OPT-CVR-4848-16H	OPT-CVR-4848-24H	OPT-26SC	OPT-WG2828

Palo Fire Pit Wood Grain - Concrete

Does not include door for propane tank storage.

48" Palo Fire Pit

OPT-PAL48 Match Lit
OPT-PAL48FSML Flame Sense
OPT-PAL48EKIT Plug & Play

- » Dimensions: 48" x 29"
- » Height: 17"
- » Burning Area: 20" x 8" x 2"
- » Weight: 355 lbs.
- » BTU: 20K
- » Sugg. Fire Glass: 20 lbs.

60" Palo Fire Pit

OPT-PAL60 Match Lit
OPT-PAL60FSML Flame Sense
OPT-PAL60EKIT Plug & Play

- » Dimensions: 60" x 29"
- » Height: 17"
- » Burning Area: 32" x 8" x 2"
- » Weight: 495 lbs.
- » BTU: 40K
- » Sugg. Fire Glass: 30 lbs.



48" OAK FINISH SHOWN

Bullet Burner Upgrades

Unit	Stainless Steel Bullet Burner
48" Palo	OPT-B12SST
60" Palo	OPT-B24SST

Optional Accessories

Unit	Canvas Cover	Stainless Lid	Glass Wind Guard
48" Palo	OPT-CVR-4828-17H	OPT-RC1022	OPT-WG-2412
60" Palo	OPT-CVR-6028-17H	OPT-RC1034	OPT-WG-3612



GFRC WOOD GRAIN COLOR OPTIONS

When ordering, specify the color by adding the color code to the end of the Part #.
Example: Coronado Fire Pit in Ivory = OPT-COR48-IVY

FIRE PITS & FIRE TABLES

All fire pits include: Fire Pan, Burner, Key Valve, Key, Gas Hoses, Lava Rock.
For Match Lit w/ Flame Sense add "-FSML" to part #. For Plug & Play Ignition, add "-EKIT"



OAK FINISH SHOWN



IVORY FINISH SHOWN

Carson Wood Grain Fire Pit - 16" Tall - Concrete

Does not include door for propane tank storage.

48" x 36" Carson Fire Pit

OPT-CRS4836LW Match Lit Ignition
OPT-CRS4836LWFMSML Flame Sense
OPT-CRS4836LWEKIT Plug & Play

60" x 36" Carson Fire Pit

OPT-CRS6036LW Match Lit Ignition
OPT-CRS6036LWFMSML Flame Sense
OPT-CRS6036LWEKIT Plug & Play

72" x 36" Carson Fire Pit

OPT-CRS7236LW Match Lit Ignition
OPT-CRS7236LWFMSML Flame Sense
OPT-CRS7236LWEKIT Plug & Play

84" x 36" Carson Fire Pit

OPT-CRS8436LW Match Lit Ignition
OPT-CRS8436LWFMSML Flame Sense
OPT-CRS8436LWEKIT Plug & Play

Carson Wood Grain Fire Pit - 24" Tall - Concrete

Includes access door for 20 lbs propane tank storage

48" x 36" Carson Fire Pit

OPT-CRS4836 Match Lit Ignition
OPT-CRS4836FSML Flame Sense
OPT-CRS4836EKIT Plug & Play

- » Dimensions: 48" x 36"
- » Height: 16" / 24"
- » Base Dimensions: 32" x 18"
- » Overhang: 4"
- » Burning Area: 30" x 8"
- » BTUs: 40K
- » Suggested Fire Glass: 25 lbs.

60" x 36" Carson Fire Pit

OPT-CRS6036 Match Lit Ignition
OPT-CRS6036FSML Flame Sense
OPT-CRS6036EKIT Plug & Play

- » Dimensions: 60" x 36"
- » Height: 16" / 24"
- » Base Dimensions: 44" x 18"
- » Overhang: 4"
- » Burning Area: 42" x 8"
- » BTUs: 60K
- » Suggested Fire Glass: 35 lbs.

72" x 36" Carson Fire Pit

OPT-CRS7236 Match Lit Ignition
OPT-CRS7236FSML Flame Sense
OPT-CRS7236EKIT Plug & Play

- » Dimensions: 72" x 36"
- » Height: 16" / 24"
- » Base Dimensions: 56" x 18"
- » Overhang: 4"
- » Burning Area: 54" x 8"
- » BTUs: 80K
- » Suggested Fire Glass: 50 lbs.

84" x 36" Carson Fire Pit

OPT-CRS8436 Match Lit Ignition
OPT-CRS8436FSML Flame Sense
OPT-CRS8436EKIT Plug & Play

- » Dimensions: 84" x 36"
- » Height: 16" / 24"
- » Base Dimensions: 68" x 18"
- » Overhang: 4"
- » Burning Area: 66" x 8"
- » BTUs: 140K
- » Suggested Fire Glass: 60 lbs.

Optional Accessories

Unit	Canvas Cover -16"	Canvas Cover -24"	Stainless Lid	Glass Wind Guard
48" Carson	OPT-CVR-4836-16H	OPT-CVR-4836-24H	OPT-1032	OPT-WG-3412
60" Carson	OPT-CVR-6036-16H	OPT-CVR-6036-24H	OPT-1044	OPT-WG-4612
72" Carson	OPT-CVR-7236-16H	OPT-CVR-7236-24H	OPT-1056	OPT-WG-5812
84" Carson	OPT-CVR-8436-16H	OPT-CVR-8436-24H	OPT-1068	OPT-WG-7012

Bullet Burner Upgrades

Unit	Stainless Steel Bullet Burner
48" Carson	OPT-B24SST
60" Carson	OPT-B36SST
72" Carson	OPT-B48SST
84" Carson	OPT-B60SST



GFRC WOOD GRAIN COLOR OPTIONS

When ordering, specify the color by adding the color code to the end of the Part #.
Example: Coronado Fire Pit in Ivory = OPT-COR48-IVY

Alberta Wood Grain Fire Pit - Concrete

Includes access door for 20 lbs propane tank storage

OPT-ALB36 Match Lit
OPT-ALB36FSML Flame Sense
OPT-ALB36EKIT Plug & Play

- » Dimensions: 36" x 24"
- » Base: 24" x 18"
- » Height: 23"
- » Burning Area: 20" x 8" x 2"
- » Weight: 150 lbs.
- » BTU: 30K
- » Sugg. Fire Glass: 25 lbs.



OAK FINISH SHOWN

Bullet Burner Upgrades

Unit	Stainless Steel Bullet Burner
36" Alberta	OPT-B18SST

Optional Accessories

Canvas Cover	OPT-CVR-3624-23H
Stainless Steel Lid	OPT-RC1022
Glass Wind Guard	OPT-WG-2412



GFRC WOOD GRAIN COLOR OPTIONS

When ordering, specify the color by adding the color code to the end of the Part #.
Example: Coronado Fire Pit in Ivory = OPT-COR48-IVY

Alberta Black & White Fire Pit

GFRC Top & Powder Coat Base

Features access door for propane tank storage.

*Propane Tank not included

36" Alberta

OPT-ALBPC36-BWC Match Lit Ignition
OPT-ALBPC36FSML-BWC Flame Sense
OPT-ALBPC36EKIT-BWC Plug & Play

- » Dimensions: 36" x 30"
- » Height: 24"
- » Burning Area: 18" x 8"
- » BTU: 20K
- » Sugg. Fire Glass: 50 lbs.

48" Alberta

OPT-ALBPC48-BWC Match Lit Ignition
OPT-ALBPC48FSML-BWC Flame Sense
OPT-ALBPC48EKIT-BWC Plug & Play

- » Dimensions: 48" x 30"
- » Height: 24"
- » Burning Area: 30" x 8"
- » BTU: 40K
- » Sugg. Fire Glass: 50 lbs.

60" Alberta

OPT-ALBPC60-BWC Match Lit Ignition
OPT-ALBPC60FSML-BWC Flame Sense
OPT-ALBPC60EKIT-BWC Plug & Play

- » Dimensions: 60" x 30"
- » Height: 24"
- » Burning Area: 42" x 8"
- » BTU: 60K
- » Sugg. Fire Glass: 100 lbs.

72" Alberta

OPT-ALBPC72-BWC Match Lit Ignition
OPT-ALBPC72FSML-BWC Flame Sense
OPT-ALBPC72EKIT-BWC Plug & Play

- » Dimensions: 72" x 30"
- » Height: 24"
- » Burning Area: 54" x 8"
- » BTU: 90K
- » Sugg. Fire Glass: 100 lbs.



Bullet Burner Upgrades

Unit	Stainless Steel Bullet Burner
36" Alberta	OPT-B12SST
48" Alberta	OPT-B24SST
60" Alberta	OPT-B36SST
72" Alberta	OPT-B54SST

Optional Accessories

Unit	Canvas Cover	Stainless Lid
36" Alberta	OPT-CVR-3630-24H	OPT-RC1020
48" Alberta	OPT-CVR-4830-24H	OPT-RC1032
60" Alberta	OPT-CVR-6030-24H	OPT-RC1044
72" Alberta	OPT-CVR-7230-24H	OPT-RC1052

Tacoma Fire Table - Wood Grain Top & Powder Coat Base

Includes access door for 20lb propane tank storage.

OPT-TACW4830 Match Lit
OPT-TACW4830FSML Flame Sense
OPT-TACW4830EKIT Plug & Play

- » Dimensions: 48" x 30"
- » Height: 24"
- » Base Dimensions: 33" x 18"
- » Overhang: 4"
- » Burning Area: 30" x 8"
- » BTUs: 40K
- » Suggested Fire Glass: 25 lbs.



Bullet Burner Upgrades

Unit	Stainless Steel Bullet Burner
48" Tacoma	OPT-B24SST

Optional Accessories

Canvas Cover	OPT-CVR-4830-24H
Stainless Steel Lid	OPT-RC1032
Glass Wind Guard	OPT-WG-3412



GFRC WOOD GRAIN COLOR OPTIONS

When ordering, specify the color by adding the color code to the end of the Part #.
Example: Coronado Fire Pit in Ivory = OPT-COR48-IVY

Tacoma Black & White Fire Table White Top & Black Powder Coat Base

Includes access door for 20lb propane tank storage.

OPT-TACPC4830-BWC Match Lit
OPT-TACPC4830FSML-BWC Flame Sense
OPT-TACPC4830EKIT-BWC Plug & Play

- » Dimensions: 48" x 30"
- » Height: 24"
- » Base Dimensions: 33" x 18"
- » Overhang: 4"
- » Burning Area: 30" x 8"
- » BTUs: 40K
- » Suggested Fire Glass: 25 lbs.



Bullet Burner Upgrades

Unit	Stainless Steel Bullet Burner
48" Tacoma	OPT-B24SST

Optional Accessories

Canvas Cover	OPT-CVR-4830-24H
Stainless Steel Lid	OPT-RC1032
Glass Wind Guard	OPT-WG-3412

Tacoma Slate Fire Table - GFRC Top & Metal Powder Coat Base

Includes access door for 20lb propane tank storage.

OPT-TACS4830 Match Lit
OPT-TACS4830FSML Flame Sense
OPT-TACS4830EKIT Plug & Play

- » Dimensions: 48" x 30"
- » Height: 24"
- » Base Dimensions: 33" x 18"
- » Overhang: 4"
- » Burning Area: 30" x 8"
- » BTUs: 40K
- » Suggested Fire Glass: 25 lbs.



Bullet Burner Upgrades

Unit	Stainless Steel Bullet Burner
48" Tacoma	OPT-B24SST

Optional Accessories

Canvas Cover	OPT-CVR-4830-24H
Stainless Steel Lid	OPT-RC1032
Glass Wind Guard	OPT-WG-3412

Merona Fire Table - SS Top & Metal Base

Includes access door for 20 lbs propane tank storage

TOP-MC4622	Match Lit
TOP-MC4622FSML	Flame Sense
TOP-MC4622EKIT	Plug & Play
TOP-MCCPR4622	Hammered Copper
TOP-MCCS4622	Corten Steel
TOP-MCSS4622	Stainless Steel

- » Dimensions: 46" x 22"
- » Height: 24"
- » Burning Area: 30" x 8"
- » Weight: 195 Lbs.
- » BTU: 40K
- » Sugg. Fire Glass: 25 lbs.
- » Material: Metal Body / Stainless Steel Top
- » Finish: Metal Base / Brushed Stainless Steel



Optional Accessories

Canvas Cover	OPT-CVR-4622-24H
Stainless Steel Lid	OPT-RC1032
Glass Wind Guard	OPT-WG-3412

Bullet Burner Upgrades

Unit	Stainless Steel Bullet Burner
46" Merona	OPT-B24SST



Merona Fire Table - Black & White White Top & Black Powder Coat Base

Includes access door for 20 lbs propane tank storage

TOP-MC4622-BWC	Match Lit
TOP-MC4622FSML-BWC	Flame Sense
TOP-MC4622EKIT-BWC	Plug & Play

- » Dimensions: 46" x 22"
- » Height: 24"
- » Burning Area: 30" x 8"
- » Weight: 195 Lbs.
- » BTU: 40K
- » Sugg. Fire Glass: 25 lbs.



Optional Accessories

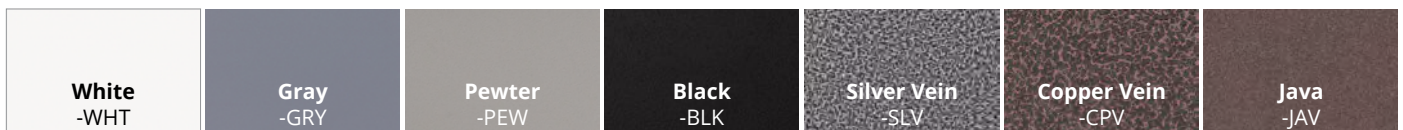
Canvas Cover	OPT-CVR-4622-24H
Stainless Steel Lid	OPT-RC1032
Glass Wind Guard	OPT-WG-3412

Bullet Burner Upgrades

Unit	Stainless Steel Bullet Burner
46" Merona	OPT-B24SST

POWDER COAT COLOR OPTIONS

When ordering, specify the powder coat color by adding the color code to the end of the Part #. **Example:** White Coronado Fire Pit = OPT-CORPC48-WHT





Vista Fire Pit - Metal Collection

Includes door for propane tank storage

OPT-FPT2500	Hammered Copper
OPT-FPTCS2500	Corten Steel
OPT-FPTSS2500	Stainless Steel
OPT-FPTPC2500	Powder Coat

- » Dimensions: 24" x 24"
- » Base Dimensions: 16" x 16"
- » Height: 24"
- » Burning Area: 16" x 16" x 2"
- » Weight: 165 lbs.
- » BTU: 45K
- » Sugg. Fire Glass: 25 lbs.
- » Material: Copper
- » Finish: Patina Copper



Optional Accessories

Canvas Cover	OPT-CVR-2424-24H
Stainless Steel Lid	OPT-18SC

Bullet Burner Upgrades

Unit	Stainless Steel Bullet Burner
24" Vista	OPT-BRDSS8



Martillo Fire Pit - Metal Collection

Includes door for propane tank storage

OPT-48RM	Hammered Copper
OPT-48RMCS	Corten Steel
OPT-48RMSS	Stainless Steel
OPT-48RMPC	Powder Coat

- » Diameter: 48"
- » Height: 24"
- » Base Diameter: 30"
- » Burning Area: 24"
- » Weight: 105 lbs.
- » BTU: 65K
- » Sugg. Fire Glass: 50 lbs.
- » Material: Copper



Optional Accessories

Canvas Cover	OPT-CVR-48R-24H
Stainless Steel Lid	OPT-26RC

Bullet Burner Upgrades

Unit	Stainless Steel Bullet Burner
48" Martillo	OPT-BRDSS12



Heikō Fire Pit - GFRC Concrete

Does not include door for propane tank storage.

OPT-5844HK	Match Lit
OPT-5844HKE12V	Low Voltage
OPT-5844HK110V	Plug & Play

- » Dimensions: 58.5" x 44.5"
- » Height: 15"
- » Base Dimensions: 52.5" x 38.5"
- » Burning Area: 32.5" x 19.75"
- » BTU: 95K
- » Sugg. Fire Glass: 50 lbs.

Optional Accessories

Canvas Cover	OPT-HKCVR-15H
Stainless Steel Lid	OPT-HK3421RC

Bullet Burner Upgrades

Unit	Stainless Steel Bullet Burner
58" Heikō	OPT-B25SSH

Fresno Fire Pit - Wood Grain Top & Powder Coat Base

Includes door for propane tank storage

43" Fresno Fire Table

OPT-FRS43	Match Lit Ignition
OPT-FRS43FSML	Flame Sense
OPT-FRS43EKIT	Plug & Play

- » Diameter: 43"
- » Base Diameter: 24"
- » Height: 24"
- » Burning Area: 19"
- » Weight: 285 lbs.
- » BTU: 65K
- » Sugg. Fire Glass: 30 lbs.

60" Fresno Fire Table

OPT-FRS60	Match Lit Ignition
OPT-FRS60FSML	Flame Sense
OPT-FRS60EKIT	Plug & Play

- » Diameter" 60"
- » Base Diameter: 24"
- » Height: 24"
- » Burning Area: 31"
- » Weight: 285 lbs.
- » BTU: 190K
- » Sugg. Fire Glass: 30 lbs.

Bullet Burner Upgrades

Unit	Stainless Steel Bullet Burner
43" Fresno	OPT-BRDSS12
60" Fresno	OPT-BRDSS24

Optional Accessories

Unit	Canvas Cover	Stainless Lid
43" Fresno	OPT-CVR-43R-24H	OPT-23RC
60" Fresno	OPT-CVR-60R-24H	OPT-35RC



Ivory Top & Black Base
OPT-FRS43-IVYBLK



Ivory Top & Java Base
OPT-FRS43-IVYJAV



Oak Top & Java Base
OPT-FRS43-OAKJAV



Oak Top & Black Base
OPT-FRS43-OAKBLK



Sequoia Wood Grain Fire Pit - 16" Tall

Does not include door for propane tank storage.

42" Sequoia Fire Pit

OPT-SEQ42LW	Match Lit Ignition
OPT-SEQ42LWFSML	Flame Sense
OPT-SEQ42LWEKIT	Plug & Play

- » Diameter: 42"
- » Height: 16"
- » Burn Area: 19"
- » BTUs: 65K
- » Sugg. Fire Glass: 30 lbs.

60" Sequoia Fire Pit

OPT-SEQ60LW	Match Lit Ignition
OPT-SEQ60LWFSML	Flame Sense
OPT-SEQ60LWEKIT	Plug & Play

- » Diameter: 60"
- » Height: 16"
- » Burn Area: 31"
- » BTUs: 160K
- » Sugg. Fire Glass: 30 lbs.

Optional Accessories

Unit	Canvas Cover	Stainless Lid
42" Sequoia	OPT-CVR-42R-16H	OPT-23RC
60" Sequoia	OPT-CVR-60R-16H	OPT-35RC

Bullet Burner Upgrades

Unit	Stainless Steel Bullet Burner
42" Sequoia	OPT-BRDSS12
60" Sequoia	OPT-BRDSS18

Sequoia Wood Grain Fire Pit - 24" Tall

Includes access door for 20lb propane tank storage.

42" Sequoia Fire Pit

OPT-SEQ42	Match Lit Ignition
OPT-SEQ42FSML	Flame Sense
OPT-SEQ42EKIT	Plug & Play

- » Diameter: 42"
- » Height: 24"
- » Burn Area: 19"
- » BTUs: 65K
- » Sugg. Fire Glass: 30 lbs.

60" Sequoia Fire Pit

OPT-SEQ60	Match Lit Ignition
OPT-SEQ60FSML	Flame Sense
OPT-SEQ60EKIT	Plug & Play

- » Diameter: 60"
- » Height: 24"
- » Burn Area: 31"
- » BTUs: 160K
- » Sugg. Fire Glass: 30 lbs.





42" (16" - TALL) OAK FINISH





120" IVORY SHOWN

Laguna Wood Grain Fire Pit - Concrete

Includes access door for 20lb propane tank storage.

120" x 60" Laguna Fire Table

OPT-LGNGF120 Match Lit
OPT-LGNGF120FSML Flame Sense
OPT-LGNGF120EKIT Plug & Play

- » Dimensions: 120" x 60"
- » Height: 42"
- » Burning Area: 78" x 12"
- » Overhang: 12"
- » Weight: 1465 lbs.
- » BTU: 110K
- » Sugg. Fire Glass: 125 lbs.

144" x 60" Laguna Fire Table

OPT-LGNGF144 Match Lit
OPT-LGNGF144FSML Flame Sense
OPT-LGNGF144EKIT Plug & Play

- » Dimensions: 144" x 60"
- » Height: 42"
- » Burning Area: 102" x 12"
- » Overhang: 12"
- » Weight: 1750 lbs.
- » BTU: 150K
- » Sugg. Fire Glass: 175 lbs.



Bullet Burner Upgrades

Unit	Stainless Steel Bullet Burner
120" Laguna	OPT-B66SST
144" Laguna	OPT-B90SST

Optional Accessories

Unit	Canvas Cover	Stainless Lid	Glass Wind Guard
120" Laguna	OPT-CVR-12060-42H	OPT-RC1682	OPT-WG-8216
144" Laguna	OPT-CVR-14460-42H	OPT-RC16106	OPT-WG-10616

The Grove Wood Grain Fire Table - Concrete

Includes access door for 20lb propane tank storage.

OPT-GRVWG60 Match Lit
OPT-GRVWG60FSML Flame Sense
OPT-GRVWG60EKIT Plug & Play

- » Dimensions: 60" x 28"
- » Height: 24"
- » Base Dimensions: 48" x 22"
- » Burning Area: 30" x 10"
- » Weight: 235 lbs.
- » BTU: 40K
- » Sugg. Fire Glass: 50 lbs.



Bullet Burner Upgrades

Unit	Stainless Steel Bullet Burner
60" Grove	OPT-B24SST

Optional Accessories

Canvas Cover	OPT-CVR-6028-24H
Stainless Steel Lid	OPT-RC1232
Glass Wind Guard	OPT-WG-3414



GFRC WOOD GRAIN COLOR OPTIONS

When ordering, specify the color by adding the color code to the end of the Part #.
Example: Coronado Fire Pit in Ivory = OPT-COR48-IVY

Outback Fire Pit

This table features a cut-out design backed by a plate with the same powder coated finish
Concrete Top, Powder Coated Base.
Includes door for propane tank storage.

Cattle Ranch Version

OPT-OBCR6036PC Powder Coat Base
OPT-OBCR6036CS Corten Steel Base

Deer Country Version

OPT-OBDC6036PC Powder Coat Base
OPT-OBDC6036CS Corten Steel Base

- » Dimensions: 60" x 36"
- » Base: 42" x 22"
- » Height: 24"
- » Burning Area: 31" x 11"
- » Weight: 265 lbs.
- » BTU: 70K
- » Sugg. Fire Glass: 20 lbs.



Bullet Burner Upgrades

Unit	Stainless Steel Bullet Burner
60" Outback	OPT-B18SSH



CATTLE RANCH VERSION WITH
POWDER COAT BASE / COFFEE TOP SHOWN



DEER COUNTRY VERSION
CORTEN STEEL BASE / COFFEE TOP SHOWN



CATTLE RANCH VERSION
WITH BROWN TOP SHOWN



Outback Fire Pit

This table features a cut-out design backed by a plate with the same powder coated finish
Concrete Top, Powder Coated Base.
Includes door for propane tank storage.

Cattle Ranch Version

OPT-OBRCR46 Match Lit
OPT-OBRCR46FSML Flame Sense
OPT-OBRCR46E110 Plug & Play

Deer Country Version

OPT-OBRDC46 Match Lit
OPT-OBRDC46FSML Flame Sense
OPT-OBRDC46E110 Plug & Play

- » Diameter: 46"
- » Base: 28"
- » Height: 24"
- » Burning Area: 21"
- » Weight: 210 lbs.
- » BTU: 65K
- » Sugg. Fire Glass: 20 lbs.



FIRE PITS & FIRE TABLES

All fire pits include: Fire Pan, Burner, Key Valve, Key, Gas Hoses, Lava Rock.
For Match Lit w/ Flame Sense add "-FSML" to part #. For Plug & Play Ignition, add "-EKIT"

San Juan Fire Pit - Metal Collection

Features access door for propane tank storage.

***Horizontal Propane Tank not included**

48" San Juan Fire Pit

OPT-SANJCPR48	Hammered Copper
OPT-SANJCS48	Corten Steel
OPT-SANJSS48	Stainless Steel
OPT-SANJPC48	Powder Coat

- » Dimensions: 48" x 28"
- » Height: 18"
- » Burning Area: 24" x 10"
- » Base: 40" x 20.5"
- » BTU: 70K
- » Sugg. Fire Glass: 50 lbs.

72" San Juan Fire Pit

OPT-SANJCPR72	Hammered Copper
OPT-SANJCS72	Corten Steel
OPT-SANJSS72	Stainless Steel
OPT-SANJPC72	Powder Coat

- » Dimensions: 72" x 28"
- » Height: 18"
- » Burning Area: 36" x 10"
- » Base: 64" x 20.5"
- » BTU: 110K
- » Sugg. Fire Glass: 50 lbs.



60" San Juan Fire Pit

OPT-SANJCPR60	Hammered Copper
OPT-SANJCS60	Corten Steel
OPT-SANJSS60	Stainless Steel
OPT-SANJPC60	Powder Coat

- » Dimensions: 60" x 28"
- » Height: 18"
- » Burning Area: 30" x 10"
- » Base: 52" x 20.5"
- » BTU: 90K
- » Sugg. Fire Glass: 50 lbs.

84" San Juan Fire Pit

OPT-SANJCPR84	Hammered Copper
OPT-SANJCS84	Corten Steel
OPT-SANJSS84	Stainless Steel
OPT-SANJPC84	Powder Coat

- » Dimensions: 84" x 28"
- » Height: 18"
- » Burning Area: 42" x 10"
- » Base: 76" x 20.5"
- » BTU: 130K
- » Sugg. Fire Glass: 100 lbs.

96" San Juan Fire Pit

OPT-SANJCPR96	Hammered Copper
OPT-SANJCS96	Corten Steel
OPT-SANJSS96	Stainless Steel
OPT-SANJPC96	Powder Coat

- » Dimensions: 96" x 28"
- » Height: 18"
- » Burning Area: 48" x 10"
- » Base: 88" x 20.5"
- » BTU: 150K
- » Sugg. Fire Glass: 100 lbs.

Optional Accessories

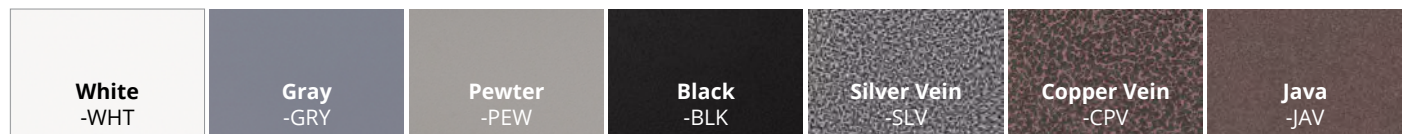
Unit	Canvas Cover
48" San Juan	OPT-CVR-4828-18H
60" San Juan	OPT-CVR-6028-18H
72" San Juan	OPT-CVR-7228-18H
84" San Juan	OPT-CVR-8428-18H
96" San Juan	OPT-CVR-9628-18H

Bullet Burner Upgrades

Unit	Stainless Steel Bullet Burner	Unit	Stainless Steel Bullet Burner	Unit	Stainless Steel Bullet Burner
48" San Juan	OPT-B18SSH	72" San Juan	OPT-B30SSH	96" San Juan	OPT-B42SSH
60" San Juan	OPT-B24SSH	84" San Juan	OPT-B36SSH		

POWDER COAT COLOR OPTIONS

When ordering, specify the powder coat color by adding the color code to the end of the Part #. **Example:** White Coronado Fire Pit = OPT-CORPC48-WHT



48" WHITE POWDER COAT SHOWN

Tidal Fire Pit - Metal Collection

Includes access door for 20 lbs propane tank storage

- OPT-TIDCPR48 Hammered Copper
- OPT-TIDCS48 Corten Steel
- OPT-TIDSS48 Stainless Steel
- OPT-TIDPC48 Powder Coat

- » Dimensions: 48" x 24"
- » Height: 24"
- » Burning Area: 30" x 8"
- » Weight: 100 lbs.
- » BTU: 40K
- » Sugg. Fire Glass: 75 lbs.



Bullet Burner Upgrades

Unit	Stainless Steel Bullet Burner
48" Tidal	OPT-B24SST

Optional Accessories

Canvas Cover	OPT-CVR-4824-24H
Stainless Steel Lid	OPT-RC1032
Glass Wind Guard	OPT-WG-2828



Whitney Fire Pit - Metal Collection

Includes access door for 20 lbs propane tank storage

48" Whitney Fire Pit

- OPT-WHTCPR48 Hammered Copper
- OPT-WHTCS48 Corten Steel
- OPT-WHTSS48 Stainless Steel
- OPT-WHTPC48 Powder Coat

- » Outer Dimensions: 48" x 48"
- » Inner Dimensions: 24" x 24"
- » Width: 24"
- » Height: 24"
- » Burning Area: 36" x 36" x 10"
- » BTUs: 95K
- » Sugg. Fire Glass: 100 lbs.

60" Whitney Fire Pit

- OPT-WHTCPR60 Hammered Copper
- OPT-WHTCS60 Corten Steel
- OPT-WHTSS60 Stainless Steel
- OPT-WHTPC60 Powder Coat

- » Outer Dimensions: 60" x 60"
- » Inner Dimensions: 36" x 36"
- » Width: 36"
- » Height: 24"
- » Burning Area: 48" x 48" x 10"
- » BTUs: 130K
- » Sugg. Fire Glass: 100 lbs.

72" Whitney Fire Pit

- OPT-WHTCPR72 Hammered Copper
- OPT-WHTCS72 Corten Steel
- OPT-WHTSS72 Stainless Steel
- OPT-WHTPC72 Powder Coat

- » Outer Dimensions: 72" x 72"
- » Inner Dimensions: 48" x 48"
- » Width: 48"
- » Height: 24"
- » Burning Area: 60" x 60" x 10"
- » BTUs: 170K
- » Sugg. Fire Glass: 125 lbs.

Optional Accessories

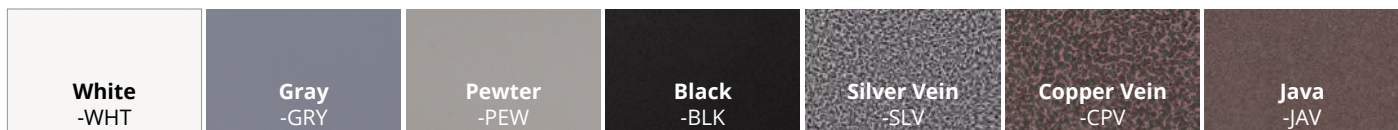
Unit	Canvas Cover	Stainless Lid
48" Whitney	OPT-WHTCVR-484824-24H	OPT-WHTRC-383812
60" Whitney	OPT-WHTCVR-606036-24H	OPT-WHTRC-505012
72" Whitney	OPT-WHTCVR-727248-24H	OPT-WHTRC-626212

Bullet Burner Upgrades

Unit	Stainless Steel Bullet Burner
48" Whitney	OPT-WHTB2828SST
60" Whitney	OPT-WHTB3939SST
72" Whitney	OPT-WHTB5151SST

POWDER COAT COLOR OPTIONS

When ordering, specify the powder coat color by adding the color code to the end of the Part #. **Example:** White Coronado Fire Pit = OPT-CORPC48-WHT



Dana Fire Pit - Powder Coat

Includes access door for 20 lbs propane tank storage

OPT-DANCPR60	Hammered Copper
OPT-DANCS60	Corten Steel
OPT-DANSS60	Stainless Steel
OPT-DANPC60	Powder Coat

- » Dimensions: 60" x 28"
- » Height: 24"
- » Burn Area: 12" x 12"
- » Ice Chest: 13"
- » Weight: 315 lbs.
- » BTU: 45K
- » Sugg. Fire Glass: 50 lbs.
- » Material: Steel
- » Finish: Powder Coat



Bullet Burner Upgrades

Unit	Stainless Steel Bullet Burner
60" Dana	OPT-BRDSS8

Optional Accessories

Canvas Cover	OPT-DANCVR-6028-24H
Stainless Steel Lid	OPT-14SC
Glass Wind Guard	OPT-WG-1414

Alto Fire Pit - Metal Collection

Includes access door for 20 lbs propane tank storage

66" x 28" Alto Fire Pit

OPT-ALTCPR66	Hammered Copper
OPT-ALTCS66	Corten Steel
OPT-ALTSS66	Stainless Steel
OPT-ALTPC66	Powder Coat

- » Dimensions: 66" x 28"
- » Height: 24"
- » Burn Area Height: 8"
- » Burning Area: 24" x 10"
- » Weight: 160 lbs.
- » BTU: 30K
- » Sugg. Fire Glass: 25 lbs.

78" x 28" Alto Fire Pit

OPT-ALTCPR78	Hammered Copper
OPT-ALTCS78	Corten Steel
OPT-ALTSS78	Stainless Steel
OPT-ALTPC78	Powder Coat

- » Dimensions: 78" x 28"
- » Height: 24"
- » Burn Area Height: 8"
- » Burning Area: 36" x 10"
- » Weight: 185 lbs.
- » BTU: 50K
- » Sugg. Fire Glass: 25 lbs.

Bullet Burner Upgrades

Unit	Stainless Steel Bullet Burner
66" Alto	OPT-B18SST
78" Alto	OPT-B30SST

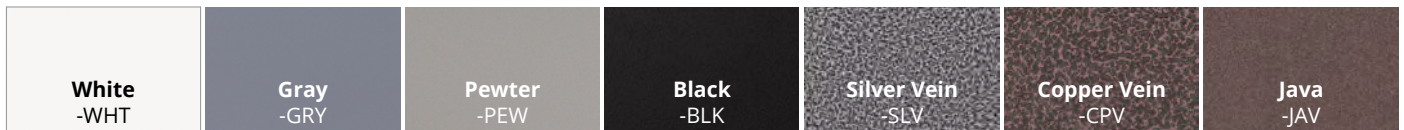
Optional Accessories

Unit	Canvas Cover	Stainless Lid	Glass Wind Guard
66" Alto	OPT-ALTCVR-6628	OPT-RC1226	OPT-WG-2814
78" Alto	OPT-ALTCVR-7828	OPT-RC1238	OPT-WG-4014



POWDER COAT COLOR OPTIONS

When ordering, specify the powder coat color by adding the color code to the end of the Part #. **Example:** White Coronado Fire Pit = OPT-CORPC48-WHT





Imperial Fire Pit - 15" Tall - Metal Collection

Does not include door for propane tank storage.

60" x 30" Imperial Fire Pit

OPT-IMCPR6015	Hammered Copper
OPT-IMCS6015	Corten Steel
OPT-IMSS6015	Stainless Steel
OPT-IMPC6015	Powder Coat

72" x 30" Imperial Fire Pit

OPT-IMCPR7215	Hammered Copper
OPT-IMCS7215	Corten Steel
OPT-IMSS7215	Stainless Steel
OPT-IMPC7215	Powder Coat



Imperial Fire Pit - 24" Tall - Metal Collection

Includes access door for 20 lbs propane tank storage

60" x 30" Imperial Fire Pit

OPT-IMCPR6024	Hammered Copper
OPT-IMCS6024	Corten Steel
OPT-IMSS6024	Stainless Steel
OPT-IMPC6024	Powder Coat

72" x 30" Imperial Fire Pit

OPT-IMCPR7224	Hammered Copper
OPT-IMCS7224	Corten Steel
OPT-IMSS7224	Stainless Steel
OPT-IMPC7224	Powder Coat

- » Dimensions: 60" x 30"
- » Height: 15"/24"
- » Burning Area: 30" x 10"
- » Weight: 105/135 lbs.
- » BTU: 40K
- » Sugg. Fire Glass: 50 lbs.

- » Dimensions: 72" x 30"
- » Height: 15"/24"
- » Burning Area: 42" x 10"
- » Weight: 125/165 lbs.
- » BTU: 60K
- » Sugg. Fire Glass: 50 lbs.



Bullet Burner Upgrades

Unit	Stainless Steel Bullet Burner
66" Imperial	OPT-B24SST
78" Imperial	OPT-B36SST

Optional Accessories

Unit	Canvas Cover-15"	Canvas Cover-24"	Stainless Lid	Glass Wind Guard
66" Imperial	OPT-CVR-6030-15H	OPT-CVR-6030-24H	OPT-RC1232	OPT-WG-3414
78" Imperial	OPT-CVR-7230-15H	OPT-CVR-7230-24H	OPT-RC1244	OPT-WG-4614

Dixie Fire Pit - Metal Collection

Includes access door for 20 lbs propane tank storage

60" x 24" Fremont Fire Pit

OPT-DXCPR60	Hammered Copper
OPT-DXCS60	Corten Steel
OPT-DXSS60	Stainless Steel
OPT-DXPC60	Powder Coat

- » Dimensions: 60" x 24"
- » Height: 24"
- » Burning Area: 36" x 8"
- » Weight: 115 lbs.
- » BTU: 50K
- » Sugg. Fire Glass: 50 lbs.

72" x 24" Fremont Fire Pit

OPT-DXCPR72	Hammered Copper
OPT-DXCS72	Corten Steel
OPT-DXSS72	Stainless Steel
OPT-DXPC72	Powder Coat

- » Dimensions: 72" x 24"
- » Height: 24"
- » Burning Area: 48" x 8"
- » Weight: 180 lbs.
- » BTU: 60K
- » Sugg. Fire Glass: 50 lbs.

Optional Accessories

Unit	Canvas Cover	Stainless Lid
60" Dixie	OPT-DXCVR-6024	OPT-DXRC-1038
72" Dixie	OPT-DXCVR-7224	OPT-DXRC-1050

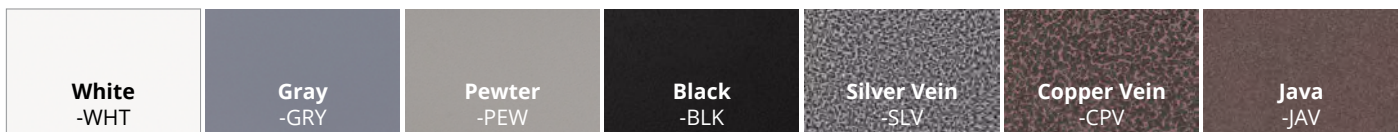
Bullet Burner Upgrades

Unit	Stainless Steel Bullet Burner
60" Dixie	OPT-B30SST
72" Dixie	OPT-B36SST



POWDER COAT COLOR OPTIONS

When ordering, specify the powder coat color by adding the color code to the end of the Part #. **Example:** White Coronado Fire Pit = OPT-CORPC48-WHT



Vallejo Fire Pit - Metal Collection

Includes access door for 20 lbs propane tank storage

60" x 36" Vallejo Fire Table

OPT-VALCPR60	Hammered Copper
OPT-VALCS60	Corten Steel
OPT-VALSS60	Stainless Steel
OPT-VALPC60	Powder Coat

- » Dimensions: 60" x 36"
- » Base Dimensions: 48" x 24"
- » Overhang: 6"
- » Height: 24"
- » Burning Area: 30" x 10"
- » Weight: 115 lbs.
- » BTU: 40K
- » Sugg. Fire Glass: 50 lbs.

72" x 36" Vallejo Fire Table

OPT-VALCPR72	Hammered Copper
OPT-VALCS72	Corten Steel
OPT-VALSS72	Stainless Steel
OPT-VALPC72	Powder Coat

- » Dimensions: 72" x 36"
- » Base Dimensions: 60" x 24"
- » Overhang: 6"
- » Height: 24"
- » Burning Area: 42" x 10"
- » Weight: 165 lbs.
- » BTU: 60K
- » Sugg. Fire Glass: 50 lbs.



Optional Accessories

Unit	Canvas Cover	Stainless Lid	Glass Wind Guard
60" Vallejo	OPT-CVR-6036-24H	OPT-RC1232	OPT-WG-3414
72" Vallejo	OPT-CVR-7236-24H	OPT-RC1244	OPT-WG-4614

Bullet Burner Upgrades

Unit	Stainless Steel Bullet Burner
60" Vallejo	OPT-B24SST
72" Vallejo	OPT-B36SST



Vernon Fire Pit - Stainless Steel

Cannot store propane tank.

OPT-VRNSS

- » Dimensions: 86" x 24"
- » Height: 27"
- » Burning Area: 30" x 8" x 2"
- » Weight: 185 lbs.
- » BTU: 40K
- » Sugg. Fire Glass: 25 lbs.
- » Material: Stainless Steel
- » Finish: Brushed



Bullet Burner Upgrades

Unit	Stainless Steel Bullet Burner
86" Vernon	OPT-B24SST

Optional Accessories

Canvas Cover	OPT-CVR-8624-27H
Stainless Steel Lid	OPT-RC1032
Glass Wind Guard	OPT-WG-3413

Frisco Fire Pit - Metal Collection

Does not include access door.

68" Frisco Fire Table

OPT-FRSCPR68	Hammered Copper
OPT-FRSCS68	Corten Steel
OPT-FRSSS68	Stainless Steel
OPT-FRSPC68	Powder Coat

- » Table Top Diameter: 48"
- » Overall Diameter: 68"
- » Burning Area: 19"
- » Height: 24"
- » Lower Clearance: 20"
- » Weight: 240 lbs.
- » BTU: 65K
- » Sugg. Fire Glass: 30 lbs.

80" Frisco Fire Table

OPT-FRSCPR80	Hammered Copper
OPT-FRSCS80	Corten Steel
OPT-FRSSS80	Stainless Steel
OPT-FRSPC80	Powder Coat

- » Table Top Diameter: 60"
- » Overall Diameter: 80"
- » Burning Area: 25"
- » Height: 24"
- » Lower Clearance: 20"
- » Weight: 285 lbs.
- » BTU: 160K
- » Sugg. Fire Glass: 50 lbs.

Bullet Burner Upgrades

Unit	Stainless Steel Bullet Burner
68" Frisco	OPT-BRDSS12
80" Frisco	OPT-BRDSS18



Optional Accessories

Unit	Canvas Cover	Stainless Lid
68" Frisco	OPT-CVR-68R-24H	OPT-23RC
80" Frisco	OPT-CVR-80R-24H	OPT-29RC

The Outdoor Plus individually handcrafts all products shown here. Finishes are subject to slight texture/color variations.



Calabajas Fire Table - Metal Collection

Does not include access door.

60" x 28" Calabajas Fire Table

OPT-CLBCPR60	Hammered Copper
OPT-CLBCS60	Corten Steel
OPT-CLBSS60	Stainless Steel
OPT-CLBPC60	Powder Coat

- » Dimensions: 60" x 28"
- » Height: 24"
- » Burning Area: 30" x 10"
- » Weight: 135 lbs.
- » BTU: 40K
- » Sugg. Fire Glass: 25 lbs.

72" x 28" Calabajas Fire Table

OPT-CLBCPR72	Hammered Copper
OPT-CLBCS72	Corten Steel
OPT-CLBSS72	Stainless Steel
OPT-CLBPC72	Powder Coat

- » Dimensions: 72" x 28"
- » Height: 24"
- » Burning Area: 42" x 10"
- » Weight: 165 lbs.
- » BTU: 60K
- » Sugg. Fire Glass: 25 lbs.

84" x 36" Calabajas Fire Table

OPT-CLBCPR84	Hammered Copper
OPT-CLBCS84	Corten Steel
OPT-CLBSS84	Stainless Steel
OPT-CLBPC84	Powder Coat

- » Dimensions: 84" x 36"
- » Height: 24"
- » Burning Area: 54" x 10"
- » Weight: 200 lbs.
- » BTU: 80K
- » Sugg. Fire Glass: 25 lbs.

96" x 36" Calabajas Fire Table

OPT-CLBCPR96	Hammered Copper
OPT-CLBCS96	Corten Steel
OPT-CLBSS96	Stainless Steel
OPT-CLBPC96	Powder Coat

- » Dimensions: 96" x 36"
- » Height: 24"
- » Burning Area: 66" x 10"
- » Weight: 235 lbs.
- » BTU: 100K
- » Sugg. Fire Glass: 25 lbs.

Optional Accessories

Unit	Canvas Cover	Stainless Lid	Glass Wind Guard
60" Calabajas	OPT-CVR-6028-24H	OPT-RC1232	OPT-WG-3414
72" Calabajas	OPT-CVR-7228-24H	OPT-RC1244	OPT-WG-4614
84" Calabajas	OPT-CVR-8436-24H	OPT-RC1256	OPT-WG-5814
96" Calabajas	OPT-CVR-9636-24H	OPT-RC1268	OPT-WG-7014

Bullet Burner Upgrades

Unit	Stainless Steel Bullet Burner
60" Calabajas	OPT-B24SST
72" Calabajas	OPT-B36SST
84" Calabajas	OPT-B48SST
96" Calabajas	OPT-B60SST



Maywood Fire Table - Metal Collection

Includes access door for 20 lbs propane tank storage

60" x 28" Maywood Fire Table

OPT-MYWCPR60	Hammered Copper
OPT-MYWCS60	Corten Steel
OPT-MYWSS60	Stainless Steel
OPT-MYWPC60	Powder Coat

- » Dimensions: 60" x 28"
- » Height: 24"
- » Burning Area: 30" x 10"
- » Weight: 145 lbs.
- » BTU: 40K
- » Sugg. Fire Glass: 25 lbs.

72" x 28" Maywood Fire Table

OPT-MYWCPR72	Hammered Copper
OPT-MYWCS72	Corten Steel
OPT-MYWSS72	Stainless Steel
OPT-MYWPC72	Powder Coat

- » Dimensions: 72" x 28"
- » Height: 24"
- » Burning Area: 42" x 10"
- » Weight: 175 lbs.
- » BTU: 60K
- » Sugg. Fire Glass: 25 lbs.

84" x 36" Maywood Fire Table

OPT-MYWCPR84	Hammered Copper
OPT-MYWCS84	Corten Steel
OPT-MYWSS84	Stainless Steel
OPT-MYWPC84	Powder Coat

- » Dimensions: 84" x 36"
- » Height: 24"
- » Burning Area: 54" x 10"
- » Weight: 210 lbs.
- » BTU: 80K
- » Sugg. Fire Glass: 25 lbs.

96" x 36" Maywood Fire Table

OPT-MYWCPR96	Hammered Copper
OPT-MYWCS96	Corten Steel
OPT-MYWSS96	Stainless Steel
OPT-MYWPC96	Powder Coat

- » Dimensions: 96" x 36"
- » Height: 24"
- » Burning Area: 66" x 10"
- » Weight: 245 lbs.
- » BTU: 100K
- » Sugg. Fire Glass: 25 lbs.



Optional Accessories

Unit	Canvas Cover	Stainless Lid	Glass Wind Guard
60" Maywood	OPT-CVR-6028-24H	OPT-RC1232	OPT-WG-3414
72" Maywood	OPT-CVR-7228-24H	OPT-RC1244	OPT-WG-4614
84" Maywood	OPT-CVR-8436-24H	OPT-RC1256	OPT-WG-5814
96" Maywood	OPT-CVR-9636-24H	OPT-RC1268	OPT-WG-7014

Bullet Burner Upgrades

Unit	Stainless Steel Bullet Burner
60" Maywood	OPT-B24SST
72" Maywood	OPT-B36SST
84" Maywood	OPT-B48SST
96" Maywood	OPT-B60SST

Moonstone Fire Pit - Black & White

Black Top & White Powder Coat Base

Features access door for propane tank storage.

***Horizontal Propane Tank not included**

60" Moonstone Fire Pit

OPT-60MST-BWC Match Lit Ignition
OPT-60MSTFSML-BWC Flame Sense
OPT-60MSTEKIT-BWC Plug & Play

- » Dimensions: 60" x 30"
- » Height: 16"
- » Burning Area: 30" x 10"
- » BTU: 40K
- » Sugg. Fire Glass: 50 lbs.

84" Moonstone Fire Pit

OPT-84MST-BWC Match Lit Ignition
OPT-84MSTFSML-BWC Flame Sense
OPT-84MSTEKIT-BWC Plug & Play

- » Dimensions: 84" x 30"
- » Height: 16"
- » Burning Area: 54" x 10"
- » BTU: 80K
- » Sugg. Fire Glass: 100 lbs.

72" Moonstone Fire Pit

OPT-72MST-BWC Match Lit Ignition
OPT-72MSTFSML-BWC Flame Sense
OPT-72MSTEKIT-BWC Plug & Play

- » Dimensions: 72" x 30"
- » Height: 16"
- » Burning Area: 48" x 10"
- » BTU: 60K
- » Sugg. Fire Glass: 50 lbs.

96" Moonstone Fire Pit

OPT-96MST-BWC Match Lit Ignition
OPT-96MSTFSML-BWC Flame Sense
OPT-96MSTEKIT-BWC Plug & Play

- » Dimensions: 96" x 30"
- » Height: 16"
- » Burning Area: 66" x 10"
- » BTU: 100K
- » Sugg. Fire Glass: 100 lbs.



Bullet Burner Upgrades

Unit	Stainless Steel Bullet Burner
60" Moonstone	OPT-B24SST
72" Moonstone	OPT-B36SST
84" Moonstone	OPT-B48SST
96" Moonstone	OPT-B60SST

Optional Accessories

Unit	Canvas Cover	Stainless Lid
60" Moonstone	OPT-CVR-6030-16H	OPT-RC1232
72" Moonstone	OPT-CVR-7230-16H	OPT-RC1250
84" Moonstone	OPT-CVR-8430-16H	OPT-RC1256
96" Moonstone	OPT-CVR-9630-16H	OPT-RC1268



60" MOONSTONE SHOWN

FIRE PITS & FIRE TABLES

All fire pits include: Fire Pan, Burner, Key Valve, Key, Gas Hoses, Lava Rock.
For Match Lit w/ Flame Sense add "-FSML" to part #. For Plug & Play Ignition, add "-EKIT"



Newton Fire Pit - Powder Coat

1/2" Clear Tempered Glass Top.
Cannot store propane tank storage.

38" x 34" Newton Table - Floating Appearance
OPT-NWT138 Match Lit

52" x 34" Newton Table - Floating Appearance
OPT-NWT152 Match Lit

66" x 34" Newton Table - Floating Appearance
OPT-NWT166 Match Lit

38" x 34" Newton Table - W/ Chain Support
OPT-NWT238 Match Lit

52" x 34" Newton Table - W/ Chain Support
OPT-NWT252 Match Lit

66" x 34" Newton Table - W/ Chain Support
OPT-NWT266 Match Lit

- » Dimensions: 38" x 34"
- » Base: 36" x 28"
- » Height: 22"
- » Burning Area: 18" x 8" x 2"
- » Weight: 120 lbs.
- » BTU: 20K
- » Sugg. Fire Glass: 20 lbs.

- » Dimensions: 52" x 34"
- » Base: 48" x 28"
- » Height: 22"
- » Burning Area: 24" x 8" x 2"
- » Weight: 160 lbs.
- » BTU: 30K
- » Sugg. Fire Glass: 20 lbs.

- » Dimensions: 66" x 34"
- » Base: 60" x 28"
- » Height: 22"
- » Burning Area: 36" x 8" x 2"
- » Weight: 200 lbs.
- » BTU: 40K
- » Sugg. Fire Glass: 30 lbs.

Optional Accessories

Unit	Canvas Cover	Stainless Lid	Glass Wind Guard
38" Newton	OPT-CVR-3834-22H	OPT-RC1020	OPT-WG-2212
52" Newton	OPT-CVR-5234-22H	OPT-RC1026	OPT-WG-2812
66" Newton	OPT-CVR-6634-22H	OPT-RC1038	OPT-WG-4012

Bullet Burner Upgrades

Unit	Stainless Steel Bullet Burner
38" Newton	OPT-B12SST
52" Newton	OPT-B18SST
66" Newton	OPT-B24SST



-NOTE-
Burn Area is off-center in 42" Isla
Burn Area is centered for 60" Isla

Only available in Powder Coat



Warning: Do not lay standard Propane Tank on its side
You may use a 10lb Propane Tank instead.
Horizontal Tank Not Included

For Black & White Version, add
"-BWC" to the end of the part
number.

Example: OPT-IFPPC60-BWC

42" Isla Fire Pit

Includes Stainless Steel Door For Propane Tank Storage.

OPT-IFP42 Match Lit
OPT-IFP42EKIT Plug & Play

- » Diameter: 42"
- » Height: 18"
- » Burn Area Diameter: 19"
- » BTU: 65K
- » Sugg. Fire Glass: 50 lbs.

Bullet Burner Upgrades

Unit	Stainless Steel Bullet Burner
42" Isla	OPT-BRDSS12

Optional Accessories

Unit	Canvas Cover	Stainless Lid
42" Isla	OPT-CVR-42R-18H	OPT-23RC

60" Isla Fire Pit

Includes Stainless Steel Door For Propane Tank Storage.

OPT-IFP60 Match Lit
OPT-IFP60EKIT Plug & Play

- » Diameter: 60"
- » Height: 18"
- » Burn Area Diameter: 25"
- » BTU: 160K
- » Sugg. Fire Glass: 50 lbs.

Bullet Burner Upgrades

Unit	Stainless Steel Bullet Burner
60" Isla	OPT-BRDSS18

Optional Accessories

Unit	Canvas Cover	Stainless Lid
60" Isla	OPT-CVR-60R-18H	OPT-29RC

Isla Outdoor Collection

42" Isla Fire Pit & Gravity Lounge Chair

OPT-IFP42-GVYLC Match Lit

60" Isla Fire Pit & Gravity Lounge Chair

OPT-IFP60-GVYLC Match Lit

Gravity Lounge Chair

OPT-GVYLC

Outdoor Collection Includes 4
Gravity Lounge Chairs



COLLECTION SHOWN WITH 3 CHAIRS FOR DEMONSTRATION PURPOSES

Baja Fire Pit - White Top & Black Powder Coat Base

42" Baja

OPT-BAJ42-BWC Match Lit
OPT-BAJ42FSML-BWC Flame Sense
OPT-BAJ42EKIT-BWC Plug & Play

- » Dimensions: 42" x 30"
- » Height: 14"
- » Burn Area: 30" x 10"
- » BTU: 40K
- » Sugg. Fire Glass: 50 lbs.

60" Baja

OPT-BAJ60-BWC Match Lit
OPT-BAJ60FSML-BWC Flame Sense
OPT-BAJ60EKIT-BWC Plug & Play

- » Dimensions: 60" x 30"
- » Height: 14"
- » Burn Area: 42" x 10"
- » BTU: 60K
- » Sugg. Fire Glass: 50 lbs.

72" Baja

OPT-BAJ72-BWC Match Lit
OPT-BAJ72FSML-BWC Flame Sense
OPT-BAJ72EKIT-BWC Plug & Play

- » Dimensions: 72" x 30"
- » Height: 14"
- » Burn Area: 54" x 10"
- » BTU: 80K
- » Sugg. Fire Glass: 75 lbs.

84" Baja

OPT-BAJ84-BWC Match Lit
OPT-BAJ84FSML-BWC Flame Sense
OPT-BAJ84EKIT-BWC Plug & Play

- » Dimensions: 84" x 30"
- » Height: 14"
- » Burn Area: 66" x 10"
- » BTU: 100K
- » Sugg. Fire Glass: 75 lbs.

Bullet Burner Upgrades

Unit	Stainless Steel Bullet Burner
42" Baja	OPT-B24SSST
60" Baja	OPT-B36SSST
72" Baja	OPT-B48SSST
84" Baja	OPT-B60SSST

Optional Accessories

Unit	Canvas Cover	Stainless Lid
42" Baja	OPT-CVR-4230-14H	OPT-RC1232
60" Baja	OPT-CVR-6030-14H	OPT-RC1244
72" Baja	OPT-CVR-7230-14H	OPT-RC1256
84" Baja	OPT-CVR-8430-14H	OPT-RC1268



Galloway Fire Pit - Black & White

Black Top & White Powder Coat Base

Includes Stainless Steel Door For Propane Tank Storage.

42" Galloway

OPT-GALPC42-BWC Match Lit
OPT-GALPC42FSML-BWC Flame Sense
OPT-GALPC42EKIT-BWC Plug & Play

- » Dimensions: 42" x 42"
- » Height: 18"
- » Burn Area: 24" x 15"
- » BTU: 70K
- » Sugg. Fire Glass: 50 lbs.

60" Galloway

OPT-GALPC60-BWC Match Lit
OPT-GALPC60FSML-BWC Flame Sense
OPT-GALPC60EKIT-BWC Plug & Play

- » Dimensions: 60" x 60"
- » Height: 18"
- » Burn Area: 24" x 15"
- » BTU: 90K
- » Sugg. Fire Glass: 100 lbs.

Optional Accessories

Unit	Canvas Cover
42" Galloway	OPT-CVR-4242-18H
60" Galloway	OPT-CVR-6060-18H

Bullet Burner Upgrades

Unit	Stainless Steel Bullet Burner
42" Galloway	OPT-B18SSH
60" Galloway	OPT-B24SSH



*Horizontal Propane Tank not included

Gallaway Fire Pit - Metal Collection



42" Gallaway Fire Pit

OPT-GALCPR42	Hammered Copper
OPT-GALCS42	Corten Steel
OPT-GALSS42	Stainless Steel
OPT-GALPC42	Powder Coat

- » Dimensions: 42" x 42"
- » Height: 18"
- » Burn Area: 24" x 15"
- » BTU: 70K
- » Sugg. Fire Glass: 50 lbs.

Bullet Burner Upgrades

Unit	Stainless Steel Bullet Burner
42" Gallaway	OPT-18SSH

Optional Accessories

Unit	Canvas Cover
42" Gallaway	OPT-CVR-4242-18H

*Propane Tank not included

48" Gallaway Fire Pit

OPT-GALCPR48	Hammered Copper
OPT-GALCS48	Corten Steel
OPT-GALSS48	Stainless Steel
OPT-GALPC48	Powder Coat

- » Dimensions: 48" x 48"
- » Height: 18"
- » Burn Area: 30" x 20"
- » BTU: 70K
- » Sugg. Fire Glass: 50 lbs.

Bullet Burner Upgrades

Unit	Stainless Steel Bullet Burner
48" Gallaway	OPT-B18SSH

Optional Accessories

Unit	Canvas Cover
48" Gallaway	OPT-CVR-4848-18H

*Includes door for Propane Tank Storage

60" Gallaway Fire Pit

OPT-GALCPR60	Hammered Copper
OPT-GALCS60	Corten Steel
OPT-GALSS60	Stainless Steel
OPT-GALPC60	Powder Coat

- » Dimensions: 60" x 60"
- » Height: 18"
- » Burn Area: 36" x 25"
- » BTU: 90K
- » Sugg. Fire Glass: 100 lbs.

Bullet Burner Upgrades

Unit	Stainless Steel Bullet Burner
60" Gallaway	OPT-B24SSH

Optional Accessories

Unit	Canvas Cover
60" Gallaway	OPT-CVR-6060-18H

Warning: Do not lay standard Propane Tank on its side
You may use a 10lb Propane Tank instead.



Classic Bus Fire Pit Concrete

OPT-BUS4824-BWC Match Lit
OPT-BUS4824-BWC-12V Low Voltage
OPT-BUS4824-BWC-EKIT Plug & Play

- » Dimensions: 48" x 24"
- » Height: 24"
- » Burning Area: 28" x 8"
- » BTUs: 30K
- » Suggested Fire Glass: 25 lbs.

Bullet Burner Upgrades

Unit	Stainless Steel Bullet Burner
Beach Bus	OPT-B18SST

Optional Accessories

Canvas Cover	OPT-CVR-4824-24H
Stainless Steel Lid	OPT-RC1030



Amina Fire Pit

Powder Coat

Includes 110V LED lights.
Cannot store propane tank storage

48" Amina Fire Pit

OPT-AMI4824 Match Lit
OPT-AMI4824FSML Flame Sense
OPT-AMI4824E110 Plug & Play

- » Dimensions: 48" x 24"
- » Height: 15"
- » Burning Area: 30" x 10" x 2"
- » Weight: 130 lbs.
- » BTU: 40K
- » Sugg. Fire Glass: 50 lbs.

60" Amina Fire Pit

OPT-AMI6024 Match Lit
OPT-AMI6024FSML Flame Sense
OPT-AMI6024E110 Plug & Play

- » Dimensions: 60" x 24"
- » Height: 15"
- » Burning Area: 42" x 10" x 2"
- » Weight: 165 lbs.
- » BTU: 60K
- » Sugg. Fire Glass: 50 lbs.

72" Amina Fire Pit

OPT-AMI7224 Match Lit
OPT-AMI7224FSML Flame Sense
OPT-AMI7224E110 Plug & Play

- » Dimensions: 72" x 24"
- » Height: 15"
- » Burning Area: 54" x 10" x 2"
- » Weight: 200 lbs.
- » BTU: 80K
- » Sugg. Fire Glass: 50 lbs.

Bullet Burner Upgrades

Unit	Stainless Steel Bullet Burner
48" Amina	OPT-B24SST
60" Amina	OPT-B36SST
72" Amina	OPT-B48SST



La Pinta Fire Pit

Includes 110V LED lights.
Cannot store propane tank storage

OPT-PNT72 Match Lit

- » Overall Dimensions: 72" x 34"
- » Overall Height: 57"
- » Table Dimensions: 72" x 34"
- » Table Base Dimensions: 64" x 30"
- » Table Top Overhang: 6"
- » Table Height: 24"
- » Table Burn Area: 52" x 14"
- » Boat Dimensions: 36" x 12"
- » Boat Height: 33"
- » BTU: 400,000
- » Material: Stainless Steel
- » Boat Finish:



FIRE PITS & FIRE TABLES

All fire pits include: Fire Pan, Burner, Key Valve, Key, Gas Hoses, Lava Rock.
For Match Lit w/ Flame Sense add "-FSML" to part #. For Plug & Play Ignition, add "-EKIT"



48" CESTO

Cesto Fire Pit

Powder Coat

Features access door for propane tank storage.

48" Cesto Fire Pit

OPT-CSTO48-BWC Match Lit

- » Top Dimensions: 36" Diameter
- » Overall Diameter: 48"
- » Height: 24"
- » Burning Area: 19" Diameter
- » BTU: 65K
- » Sugg. Fire Glass: 50 lbs.

60" Cesto Fire Pit

OPT-CSTO60-BWC Match Lit

- » Top Dimensions: 48" Diameter
- » Overall Diameter: 60"
- » Height: 24"
- » Burning Area: 25" Diameter
- » BTU: 160K
- » Sugg. Fire Glass: 100 lbs.

Bullet Burner Upgrades

Unit	Stainless Steel Bullet Burner
48" Cesto	OPT-BRDSS12
60" Cesto	OPT-BRDSS18

Optional Accessories

Unit	Canvas Cover
48" Cesto	OPT-CVR-48R-24H
60" Cesto	OPT-CVR-60R-24H



Cesto Outdoor Collection

48" Cesto Fire Pit & Pointe Lounge Chair

OPT-CSTO48-BWC-GVYLC Match Lit

60" Cesto Fire Pit & Pointe Lounge Chair

OPT-CSTO60-BWC-GVYLC Match Lit

Outdoor Collection Includes 4 Gravi-ty Lounge Chairs



READY-TO-FINISH FIRE PITS

Our Ready-to-Finish Fire Pits are pre-built, fully assembled fire pits with a scratch board finish. This allows you to quickly install a fire pit with your choice of exterior finishing.

- » Match the fire pit with its surroundings
- » Eliminate the hassle of building a fire pit from scratch
- » Built from strong steel tubing to support almost any stone
- » Plug & Play installation to get in & out quicker
- » Includes all components necessary so you don't have to shop around.
- » Includes proper ventilation for safe operation
- » 24" Tall units include a stainless steel door for propane tank storage.

Everything we do can be customized, RTF Fire Pits are no different. We can change the following:

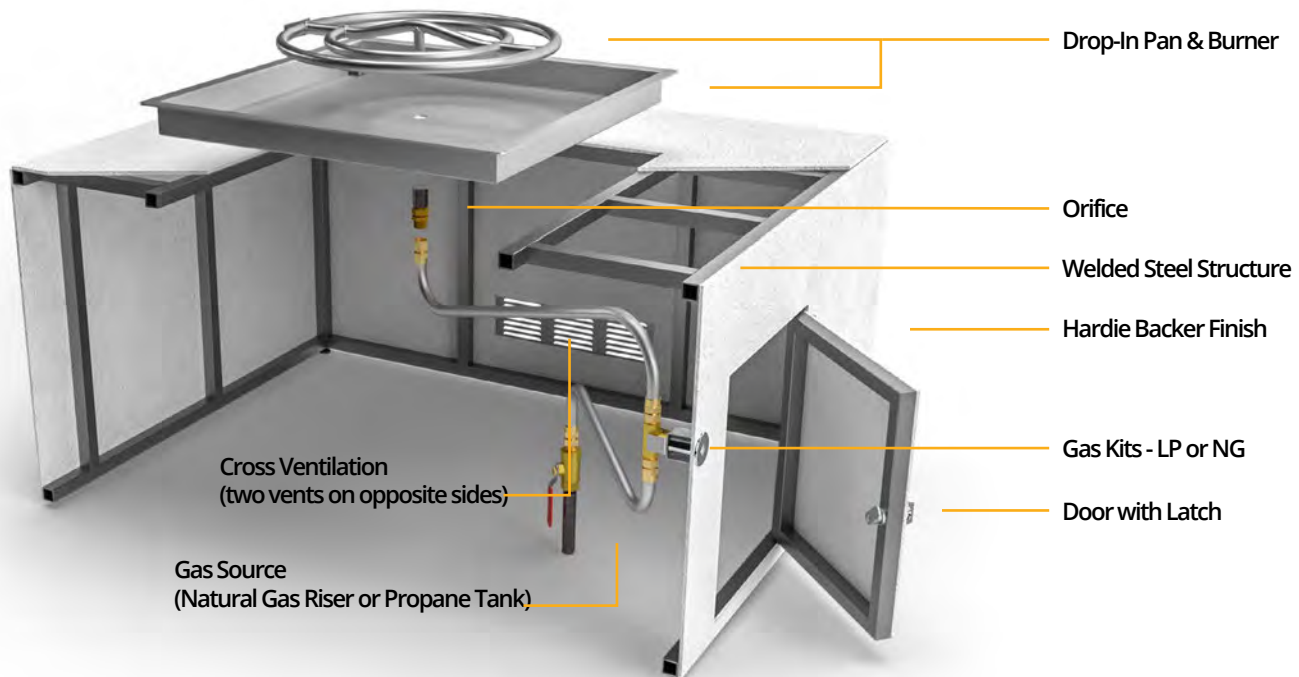
- » Gas Type - Liquid Propane or Natural Gas
- » Ignition Options - Match Lit, Flame Sense Ignition, Low Voltage or Plug & Play To Low Voltage Ignition
- » Burning Media - Lava Rock or Glass
- » Ornamental Burners and Sculptures



Finished Product Example



Component Overview





To add the Flame Sense with Spark Ignition Option, add "-FSML" to the part number.
To add the Plug & Play to Low Voltage Ignition Option, add "-EKIT" to the end of the part number



Square Pit Form - 16" Tall



PART #	L	W	H	BURN AREA	BURNER	BTU
OPT-S36PB	36"	36"	16"	18" x 18"	12"	65K
OPT-S48PB	48"	48"	16"	18" x 18"	12"	65K
OPT-S60PB	60"	60"	16"	24" x 24"	12"	65K
OPT-S72PB	72"	72"	16"	30" x 30"	18"	65K
OPT-S84PB	84"	84"	16"	36" x 36"	18"	65K

Square Pit Form - 24" Tall



PART #	L	W	H	BURN AREA	BURNER	BTU
OPT-S36DRPB	36"	36"	24"	18" x 18"	12"	65K
OPT-S48DRPB	48"	48"	24"	18" x 18"	12"	65K
OPT-S60DRPB	60"	60"	24"	24" x 24"	12"	65K
OPT-S72DRPB	72"	72"	24"	30" x 30"	18"	160K
OPT-S84DRPB	84"	84"	24"	36" x 36"	18"	160K

Square Table Form - 16" Tall



PART #	L	W	H	BASE	BURN AREA	BURNER	BTU
OPT-ST36PB	36"	36"	16"	20" x 20"	18" x 18"	12"	65K
OPT-ST48PB	48"	48"	16"	32" x 32"	18" x 18"	12"	65K
OPT-ST60PB	60"	60"	16"	44" x 44"	24" x 24"	12"	65K
OPT-ST72PB	72"	72"	16"	56" x 56"	30" x 30"	18"	160K
OPT-ST84PB	84"	84"	16"	68" x 68"	36" x 36"	18"	160K

Square Table Form - 24" Tall



PART #	L	W	H	BASE	BURN AREA	BURNER	BTU
OPT-ST36DRPB	36"	36"	24"	20" x 20"	18" x 18"	12"	65K
OPT-ST48DRPB	48"	48"	24"	32" x 32"	18" x 18"	12"	65K
OPT-ST60DRPB	60"	60"	24"	44" x 44"	24" x 24"	12"	65K
OPT-ST72DRPB	72"	72"	24"	56" x 56"	30" x 30"	18"	160K
OPT-ST84DRPB	84"	84"	24"	68" x 68"	36" x 36"	18"	160K

Rectangular Pit Form - 16" Tall



PART #	L	W	H	BURN AREA	BURNER	BTU
OPT-UFRT48PB	48"	24"	16"	36"x7"	30"	50K
OPT-UFRT60PB	60"	24"	16"	36"x7"	30"	50K
OPT-UFRT72PB	72"	24"	16"	36"x7"	30"	50K
OPT-UFRT84PB	84"	24"	16"	48"x7"	42"	70K
OPT-UFRT96PB	96"	24"	16"	48"x7"	42"	70K
OPT-UFRT108PB	108"	24"	16"	60"x7"	54"	90K

Rectangular Pit Form - 24" Tall



PART #	L	W	H	BURN AREA	BURNER	BTU
OPT-UFRT48DRPB	48"	24"	24"	36"x7"	30"	50K
OPT-UFRT60DRPB	60"	24"	24"	36"x7"	30"	50K
OPT-UFRT72DRPB	72"	24"	24"	36"x7"	30"	50K
OPT-UFRT84DRPB	84"	24"	24"	48"x7"	42"	70K
OPT-UFRT96DRPB	96"	24"	24"	48"x7"	42"	70K
OPT-UFRT108DRPB	108"	24"	24"	60"x7"	54"	90K



To add the Flame Sense with Spark Ignition Option, add "-FSML" to the part number.
 To add the Plug & Play to Low Voltage Ignition Option, add "-EKIT" to the end of the part number
 Natural Gas, add **-NG**. Liquid Propane, add **-LP**



Rectangular Table Form - 16" Tall

PART #	L	W	H	BURN AREA	BURNER	BTU
OPT-URST4816PB	48"	30"	18"	30"x8"	24"	40K
OPT-URST6016PB	60"	30"	18"	36"x8"	30"	50K
OPT-URST7216PB	72"	30"	18"	36"x8"	30"	50K
OPT-URST8416PB	84"	30"	18"	48"x8"	42"	70K
OPT-URST9616PB	96"	30"	18"	60"x8"	54"	90K
OPT-URST10816PB	108"	30"	18"	72"x8"	60"	100K



Rectangular Table Form - 24" Tall

PART #	L	W	H	BURN AREA	BURNER	BTU
OPT-URST48DRPB	48"	30"	24"	30"x8"	24"	40K
OPT-URST60DRPB	60"	30"	24"	36"x8"	30"	50K
OPT-URST72DRPB	72"	30"	24"	36"x8"	30"	50K
OPT-URST84DRPB	84"	30"	24"	48"x8"	42"	70K
OPT-URST96DRPB	96"	30"	24"	60"x8"	54"	90K
OPT-URST108DRPB	108"	30"	24"	72"x8"	60"	100K



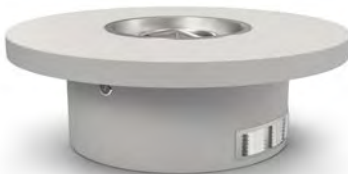
Round Pit Form - 16" Tall

PART #	D	H	BURN AREA	BURNER	BTU
OPT-RL48PB	48"	16"	19"	12"	65K
OPT-RL60PB	60"	16"	25"	12"	65K
OPT-RL72PB	72"	16"	31"	18"	160K
OPT-RL84PB	84"	16"	37"	18"	160K



Round Pit Form With Door - 24" Tall

PART #	OD	H	BURN AREA	BURNER	BTU
OPT-RL48DRPB	48"	24"	19"	12"	65K
OPT-RL60DRPB	60"	24"	25"	12"	65K
OPT-RL72DRPB	72"	24"	31"	18"	160K
OPT-RL84DRPB	84"	24"	37"	18"	160K



Round Table Form - 16" Tall

PART #	OD	H	BASE	BURN AREA	BURNER	BTU
OPT-RRL48PB	48"	16"	32"	19"	12"	65K
OPT-RRL60PB	60"	16"	44"	25"	12"	65K
OPT-RRL72PB	72"	16"	56"	31"	18"	160K
OPT-RRL84PB	84"	16"	68"	37"	18"	160K



Round Table Form With Door - 24" Tall

PART #	OD	H	BASE	BURN AREA	BURNER	BTU
OPT-RRL48DRPB	48"	24"	32"	19"	12"	65K
OPT-RRL60DRPB	60"	24"	44"	25"	12"	65K
OPT-RRL72DRPB	72"	24"	56"	31"	18"	160K
OPT-RRL84DRPB	84"	24"	68"	37"	18"	160K

READY-TO-FINISH FIRE PIT FORMS

All fire pits include: Fire Pan, Burner, Key Valve, Key, Gas Hoses, Lava Rock.

 **LIFETIME WARRANTY ON ALL BURNERS**



To add the Flame Sense with Spark Ignition Option, add "-FSML" to the part number.
To add the Plug & Play to Low Voltage Ignition Option, add "-EKIT" to the end of the part number



Natural Gas, add **-NG**. Liquid Propane, add **-LP**

Octagon Pit Form - 16" Tall



PART #	L	W	H	BURN AREA	BURNER	BTU
OPT-OCTG36PB	36"	36"	16"	19"	12"	65K
OPT-OCTG48PB	48"	48"	16"	19"	12"	65K
OPT-OCTG60PB	60"	60"	16"	25"	12"	65K
OPT-OCTG72PB	72"	72"	16"	31"	18"	160K
OPT-OCTG84PB	84"	84"	16"	37"	18"	160K

Octagon Pit Form - 24" Tall



PART #	L	W	H	BURN AREA	BURNER	BTU
OPT-OCTG36DRPB	36"	36"	24"	19"	12"	65K
OPT-OCTG48DRPB	48"	48"	24"	19"	12"	65K
OPT-OCTG60DRPB	60"	60"	24"	25"	12"	65K
OPT-OCTG72DRPB	72"	72"	24"	31"	18"	160K
OPT-OCTG84DRPB	84"	84"	24"	37"	18"	160K

Coronado Form



PART #	L	W	H	BURN AREA	BURNER	BTU
OPT-UC60PB	60"	28"	15"	36" x 10"	36"	50K
OPT-UC72PB	72"	28"	15"	48" x 10"	42"	70K
OPT-UC84PB	84"	28"	15"	60" x 10"	60"	100K
OPT-UC96PB	96"	28"	15"	72" x 10"	72"	120K
OPT-UC108PB	108"	28"	15"	84" x 10"	84"	140K
OPT-UC120PB	120"	28"	15"	96" x 10"	96"	240K

Catalina Form



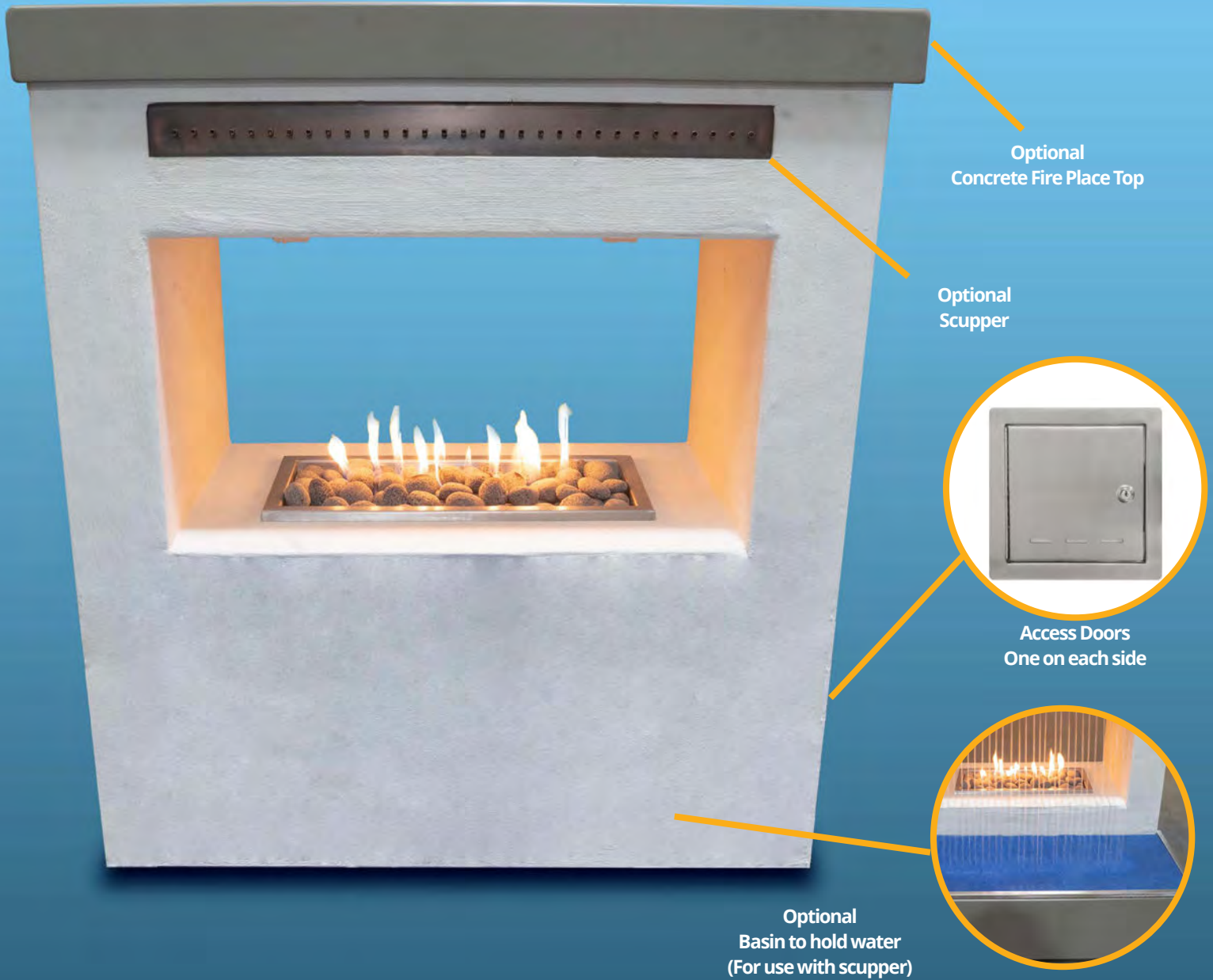
PART #	L	W	H	BURN AREA	BURNER	BTU
OPT-UCTDR60PB	60"	28"	24"	36" x 10"	30"	50K
OPT-UCTDR72PB	72"	28"	24"	48" x 10"	42"	70K
OPT-UCTDR84PB	84"	28"	24"	60" x 10"	54"	90K
OPT-UCTDR96PB	96"	28"	24"	72" x 10"	60"	100K
OPT-UCTDR108PB	108"	28"	24"	84" x 10"	72"	120K
OPT-UCTDR120PB	120"	28"	24"	96" x 10"	84"	140K



Custom RTF Fire Pit Form - 18' - Finished with Tile



RTF Fire Pit Form - 48" Round, 16" Tall
OPT-RL48PB



Ready To Finish Fireplace - 48" Tall

PART #	L	W	H	INNER LENGTH	INNER HEIGHT	BURN AREA	BURNER	BTU
OPT-RTFFP48	48"	24"	48"	36"	19.5"	23.5" x 19.5"	18"	30K
OPT-RTFFP60	60"	24"	48"	48"	19.5"	29.5" x 19.5"	24"	40K
OPT-RTFFP72	72"	24"	48"	60"	19.5"	35.5" x 19.5"	30"	50K
OPT-RTFFP84	84"	24"	48"	72"	19.5"	41.5" x 19.5"	36"	60K
OPT-RTFFP96	96"	24"	48"	84"	19.5"	47.5" x 19.5"	42"	70K

Optional Accessories

Unit	Stainless Lid	Glass Wind Guard	Optional Concrete Top	Scupper	Basin
48" Fire Place	OPT-RC2521	OPT-WG-2723	OPT-FPTOP48	OPT-RNS36	OPT-BSIN48
60" Fire Place	OPT-RC3121	OPT-WG-3323	OPT-FPTOP60	OPT-RNS48	OPT-BSIN60
72" Fire Place	OPT-RC3721	OPT-WG-3923	OPT-FPTOP72	OPT-RNS60	OPT-BSIN72
84" Fire Place	OPT-RC4321	OPT-WG-4523	OPT-FPTOP84	OPT-RNS72	OPT-BSIN84
96" Fire Place	OPT-RC4921	OPT-WG-5123	OPT-FPTOP96	OPT-RNS84	OPT-BSIN96

Bullet Burner Upgrades

Unit	Stainless Steel Bullet Burner
48" Fire Place	OPT-B18SST
60" Fire Place	OPT-B24SST
72" Fire Place	OPT-B30SST
84" Fire Place	OPT-B36SST
96" Fire Place	OPT-B42SST

FIRE BOWL STANDS AND PROPANE TANK ENCLOSURES



Concrete Pedestal

OPT-GFRCSTAND

- » Width: 16"
- » Length: 16"
- » Height: 21"
- » 14" x 16" Access Door
- » Bowl Not Included



Concrete LP Enclosure

OPT-LPHIDEGFRC

- » Width: 16"
- » Length: 16"
- » Height: 21"
- » 14" x 16" Access Door
- » Bowl Not Included



Copper LP Enclosure

OPT-LPHIDECPR

- » Width: 16"
- » Length: 16"
- » Height: 21"
- » Bowl Not Included
- » Removable Top



Corten Steel LP Enclosure

OPT-LPHIDECSS

- » Width: 16"
- » Length: 16"
- » Height: 21"
- » Bowl Not Included
- » Removable Top



Powder Coated LP Enclosure

OPT-LPHIDEPC

- » Width: 16"
- » Length: 16"
- » Height: 21"
- » Bowl Not Included
- » Removable Top



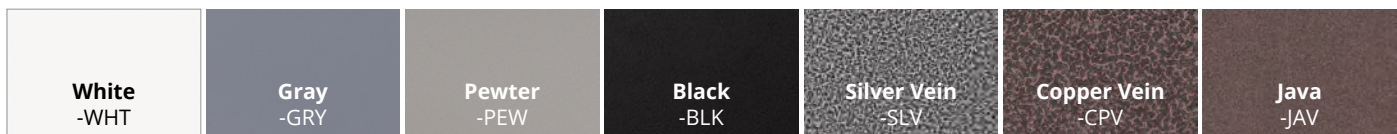
Stainless Steel LP Enclosure

OPT-LPHIDESS

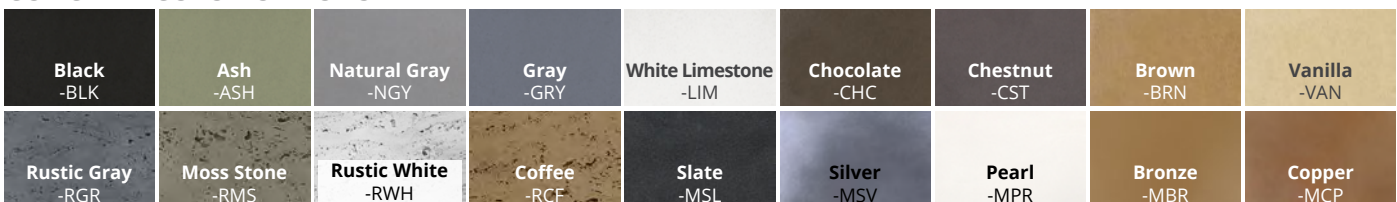
- » Width: 16"
- » Length: 16"
- » Height: 21"
- » Bowl Not Included
- » Removable Top

When ordering, specify the color by adding the color code to the end of the Part #. **Example:** 27" Brown Sedona Water Bowl = OPT-27RWO-BRN

POWDER COAT COLOR OPTIONS



CONCRETE COLOR OPTIONS





THE OUTDOOR PLUS

USA MANUFACTURER OF FIRE & WATER PRODUCTS


Scuppers

SCUPPERS AND WATER FEATURES

The Outdoor Plus has many styles of scuppers to compliment any style pool & water feature. Each scupper starts as a sheet of high grade copper and then measured, cut and welded all by hand. Each piece is then finished with a dark patina for a luxurious look.

- ◇ Custom Sizes & Styles Available
- ◇ Suitable for Chlorine & Salt Water Pools
- ◇ Manufactured By Hand in the USA
- ◇ Dark Patina Coating Applied by Hand
- ◇ Lacquer Finish to slow down natural patina
- ◇ All Items Include a port for ground wires

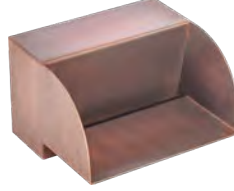
» All scuppers utilize a 1½" water inlet.
 » For scuppers with inlets, 1 inlet is added every 12"



Radius Style



PART #	W	H	D
OPT-RSE8	8"	4"	8"
OPT-RSE12	12"	4"	8"
OPT-RSE24	24"	4"	8"
OPT-RSE36	36"	4"	8"
OPT-RSE48	48"	4"	8"

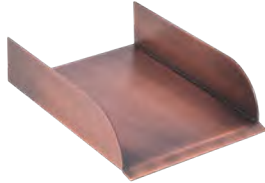


Smooth Flow Radius Style

PART #	W	H	D
OPT-SFR8	8"	4"	7"
OPT-SFR12	12"	4"	7"
OPT-SFR24	24"	4"	7"
OPT-SFR36	36"	4"	7"
OPT-SFR48	48"	4"	7"

Straight Spillway

DOES NOT UTILIZE A WATER INLET



PART #	W	H	D
OPT-SS6	6"	2"	8"
OPT-SS8	8"	2"	8"
OPT-SS10	10"	2"	8"
OPT-SS12	12"	2"	8"



Smooth Flow Style

PART #	W	H	D
OPT-SFS8	8"	4"	8"
OPT-SFS12	12"	4"	8"
OPT-SFS24	24"	4"	8"
OPT-SFS36	36"	4"	8"
OPT-SFS48	48"	4"	8"

U-Shaped Style



PART #	W	H	D
OPT-USS6	6"	6"	10"
OPT-USS8	8"	6"	10"
OPT-USS10	10"	6"	10"
OPT-USS12	12"	6"	10"



Scoop Style

PART #	W	H	D
OPT-SCS4	4"	4"	4"
OPT-SCS6	6"	6"	4"
OPT-SCS8	8"	8"	4"

Box Style



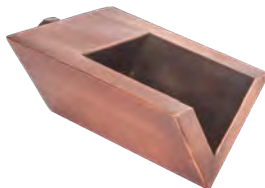
PART #	W	H	D
OPT-BX6	6"	6"	8"
OPT-BX8	8"	8"	8"
OPT-BX10	10"	10"	8"
OPT-BX12	12"	12"	8"



Arch Flow

PART #	W	H	D
OPT-ARF8	8"	5"	8"
OPT-ARF12	12"	5"	8"
OPT-ARF24	24"	5"	8"
OPT-ARF36	36"	5"	8"
OPT-ARF48	48"	5"	8"

V-Shape Style



PART #	W	H	D
OPT-WS6	6"	5"	12"
OPT-WS8	8"	5"	12"
OPT-WS10	10"	5"	12"
OPT-WS12	12"	5"	12"



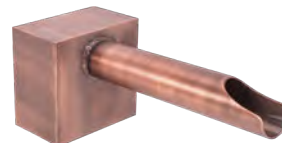
Single V Scupper

PART #	W	H	D
OPT-VSS4	4"	4"	3"
OPT-VSS5	5"	4"	3"
OPT-VSS6	6"	4"	3"
OPT-VSS7	7"	4"	3"
OPT-VSS8	8"	4"	3"

Rain Fall Style



PART #	W	H	D
OPT-RNS6	6"	4"	3.5"
OPT-RNS8	8"	4"	3.5"
OPT-RNS12	12"	4"	3.5"
OPT-RNS24	24"	4"	3.5"
OPT-RNS36	36"	4"	3.5"



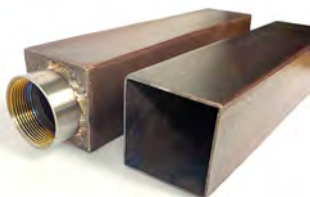
Cannon Style

PART #	W	H	D
OPT-CS2	2"	6"	12"
OPT-CS3	3"	6"	12"

SCUPPERS AND WATER FEATURES

Mini Scuppers Available In Two Options

Threaded Back & Open Back



Angled Mini Scupper

THREADED BACK	OPEN BACK	W	H	L
OPT-MSAN12T	OPT-MSAN12O	2.5"	2.5"	12"



Boxed Mini Scupper

THREADED BACK	OPEN BACK	W	H	L
OPT-MSBX12T	OPT-MSBX12O	2.5"	2.5"	12"



Cannon Mini Scupper

THREADED BACK	OPEN BACK	W	H	L
OPT-MSCN12T	OPT-MSCN12O	2"	2"	12"



Chamfered Mini Scupper

THREADED BACK	OPEN BACK	W	H	L
OPT-MSCH12T	OPT-MSCH12O	2.5"	2.5"	12"



Scalloped Mini Scupper

THREADED BACK	OPEN BACK	W	H	L
OPT-MSSC12T	OPT-MSSC12O	2.5"	2.5"	12"



Cazo Water Bowl - Wall Mounted

Includes Bowl Only (1 1/2" Water Inlet)

PART #	WIDTH	BASE WIDTH	HEIGHT	DEPTH	GPM
OPT-R24CPWMT	24"	10"	10"	15"	12-15
OPT-R30CPWMT	30"	12"	10"	18"	12-15



Maya Water Bowl - Wall Mounted

Includes Bowl Only (1 1/2" Water Inlet)

PART #	WIDTH	BASE WIDTH	HEIGHT	DEPTH	GPM
OPT-24SCWMT	24"	12"	10"	15"	12-15
OPT-30SCWMT	30"	12"	10"	18"	12-15



Tsunami Scupper

Scupper is fed water from base.

STAINLESS STEEL	POWDER COAT	WIDTH	BASE	HEIGHT	DEPTH	GPM
OPT-TSUSCPSS30	OPT-TSUSCPPC30	30"	12" x 12"	36"	45.5"	12-15



Inlet on back side of scupper

Altisimo - Wall Scupper

Scupper uses back water inlet

PART #	WIDTH	SCUPPER LENGTH	HEIGHT	DEPTH	GPM
OPT-8ALTWS	8"	12"	40"	6"	12-15
OPT-12ALTWS	12"	12"	40"	6"	12-15
OPT-16ALTWS	16"	13"	40"	6"	12-15

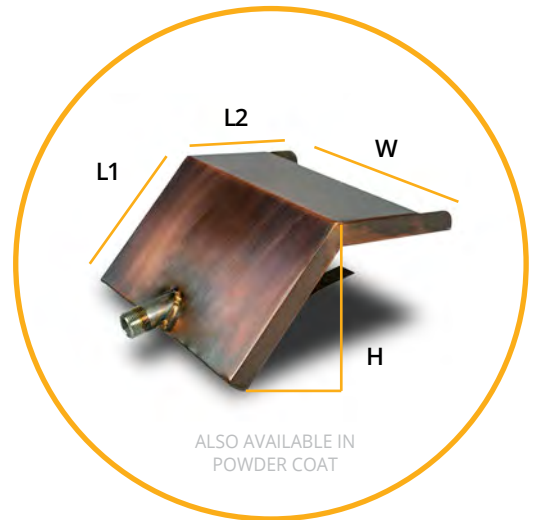
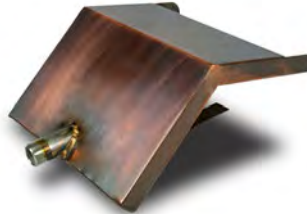
Bowl Scupper - Metal

Scupper used to Upgrade Fire Bowl into Fire & Water Bowl. uses back water inlet.

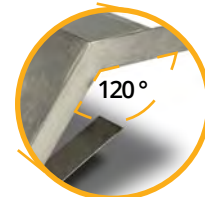
COPPER	STAINLESS STEEL	POWDER COAT	WIDTH	LENGTH 1	LENGTH 2	HEIGHT	GPM
OPT-BSCPCPR8	OPT-BSCPSS8	OPT-BSCPPC8	8"	5.5"	4.5"	5"	12-15
OPT-BSCPCPR10	OPT-BSCPSS10	OPT-BSCPPC10	10"	5.5"	5.5"	5"	12-15
OPT-BSCPCPR12	OPT-BSCPSS12	OPT-BSCPPC12	12"	5.5"	5.5"	5"	12-15
OPT-BSCPCPR16	OPT-BSCPSS16	OPT-BSCPPC16	16"	6.5"	6.5"	5"	12-15



COPPER MODEL SHOWN

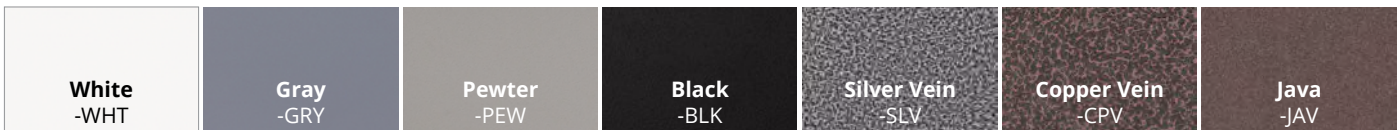


STAINLESS STEEL MODEL SHOWN



POWDER COAT COLOR OPTIONS

When ordering, specify the powder coat color by adding the color code to the end of the Part #. **Example:** White Coronado Fire Pit = OPT-CORPC48-WHT





THE OUTDOOR PLUS

USA MANUFACTURER OF FIRE & WATER PRODUCTS



Fire Towers & Self-Contained Fire & Water Fountains

FIRE TOWERS

T.O.P.'s Fire Tower line is a unique array of products that brings a one of a kind feeling to any backyard or outdoor space. These units are transportable and take up no more than 2' of floor space. Pair them to create a grandiose entry way.

◆ Custom Sizes & Styles Available

Have a custom design in mind? We can build it! Call or email us today to inquire

◆ Small Foot Print

The towers take up less space than a fire pit, and with its towering size, its sure to give an unforgettable impression.

◆ No Assembly Required

All fire towers come with its components assembled and hoses attached. Just connect the unit to gas and you're ready to operate your unit

◆ Manufactured By Hand in the USA

Each unit is made individually by hand from raw materials. T.O.P.'s craftsmen maintain high quality production standards to give you the best products



Granada Fire Tower

OPT-FTWR1 Match Lit
OPT-FTWR1EKIT Electronic Ignition

- » Dimensions: 22" X 22"
- » Height: 68"
- » Weight: 95 Lbs.
- » BTU: 40K
- » Material: Galvanized Steel
- » Finish: Powder-Coated
- » No Fire Glass Required
- » Items Included: Burner, Key Valve, Key, Gas Hoses.
- » Propane Tank Storage: Yes



Bastille Corten Tower

OPT-FTWR2 Match Lit
OPT-FTWR2EKIT Electronic Ignition

- » Dimensions: 24" x 24"
- » Height: 87"
- » Weight: 145 Lbs.
- » BTU: 40K
- » Material: Corten Steel
- » Finish: Weathered Corten Steel
- » No Fire Glass Required
- » Items Included: Burner, Key Valve, Key, Gas Hoses.
- » Propane Tank Storage: Yes



Bastille Copper Tower

OPT-FTWR3 Match Lit
OPT-FTWR3EKIT Electronic Ignition

- » Dimensions: 24" x 24"
- » Height: 87"
- » Weight: 128 Lbs.
- » BTU: 40K
- » Material: Copper
- » Finish: Hammered Patina
- » No Fire Glass Required
- » Items Included: Burner, Key Valve, Key, Gas Hoses.
- » Propane Tank Storage: Yes



High-Rise Fire Tower

28" x 28" Tower - Stainless Steel
 OPT-FTWR528 Match Lit
 OPT-FTWR528EKIT Electronic Ignition

- » Dimensions: 28" X 28"
- » Height: 72"
- » Weight: 275 Lbs.
- » BTU: 40K

42" x 42" Tower - Stainless Steel
 OPT-FTWR542 Match Lit
 OPT-FTWR542EKIT Electronic Ignition

- » Dimensions: 42" X 42"
- » Height: 72"
- » Weight: 275 Lbs.
- » BTU: 40K

- » Material: Stainless Steel
- » Finish: Brushed Finish
- » No Fire Glass Required
- » Items Included: Burner, Key Valve, Key, Gas Hoses, Glass Panels.
- » Propane Tank Storage: N/A



High-Rise Fire Tower

28" x 28" Tower - Black Powdercoat
 OPT-FTWR628 Match Lit
 OPT-FTWR628EKIT Electronic Ignition

- » Dimensions: 28" X 28"
- » Height: 72"
- » Weight: 275 Lbs.
- » BTU: 40K

42" x 42" Tower - Black Powdercoat
 OPT-FTWR642 Match Lit
 OPT-FTWR642EKIT Electronic Ignition

- » Dimensions: 42" X 42"
- » Height: 72"
- » Weight: 275 Lbs.
- » BTU: 40K

- » Material: Stainless Steel
- » Finish: Black Powder Coat
- » No Fire Glass Required
- » Items Included: Burner, Key Valve, Key, Gas Hoses, Glass Panels.
- » Propane Tank Storage: N/A

***Note: This was a custom design**



The Hay Stack Fire Tower

48" x 48" Tower - Black Powdercoat
 OPT-FTWR4 Match Lit
 OPT-FTWR4EKIT Electronic Ignition

- » Dimensions: 48" X 48"
- » Height: 72"
- » Weight: 450 Lbs.
- » BTU: 40K
- » Material: Stainless Steel
- » No Fire Glass Required
- » Items Included: Burner, Key Valve, Key, Gas Hoses, Sculpture
- » Propane Tank Storage: N/A



THE OUTDOOR PLUS

USA MANUFACTURER OF FIRE & WATER PRODUCTS

Self-Contained Fire & Water Fountains

SELF CONTAINED FIRE & WATER FOUNTAINS



60" Olympian - 4 Way Spill

OPT-OLR60 Match Lit
OPT-OLR60E Electronic Ignition

- » Overall Diameter: 60"
- » Overall Height: 36"

Water Tank

- » Diameter: 60"
- » Height: 22"
- » Basin Depth: 12"
- » Tank Includes: LED Lights (X4), 50 Ft² Water Filter, 24Hr Circulation Pump, Auto-Fill, Drain Valve.
- » Material: 316 Stainless Steel With Powder Coat Finish

4-Way Copper Fire & Water Bowl

- » Diameter: 30"
- » Height: 12"
- » Base Diameter: 16"
- » Ignition: Match Lit / Low Voltage Electronic Ignition
- » BTU: 65K
- » Sugg. Fire Glass: 50 Lbs.
- » Bowl Includes: Fire Pan, Burner, Gas Hose, Lava Rock.
- » Bowl Material: Copper - Hammered Patina Finish
- » LED Lights And Circulation Pump (Each Require 110V To Run)
- » 80 U.S. Gallons Required To Run Properly.

Our Self Contained Units come equipped with all necessary components for plug and play application. All units are ready to be finished with your choice of exterior such as stones, bricks, pavers, veneer, coping, etc. They may also be enjoyed as is. Each unit is constructed from marine grade stainless steel and finished with powder coat. Custom Sizes Available



10' x 2' Self Contained Water Fall over Fire Feature with Planter.
Riverside Food Lab, Riverside, California.

SELF CONTAINED FIRE & WATER FOUNTAINS

60" Square Olympian - 4 Way Spill

OPT-OLS60S Match Lit
OPT-OLS60SE Electronic Ignition

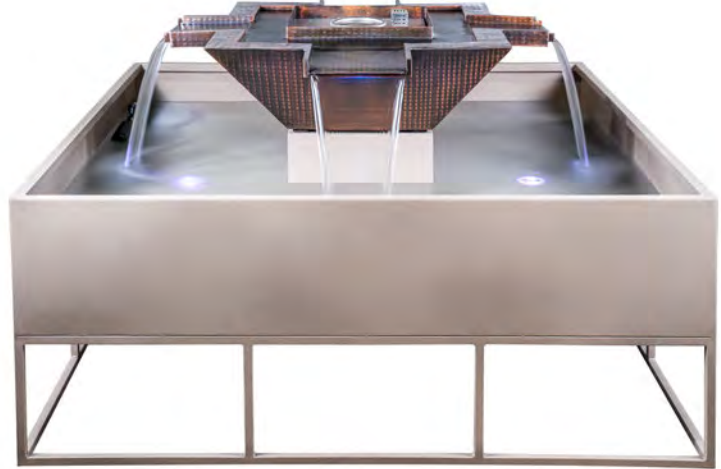
» Overall Dimensions: 60" x 60" x 36"

Water Tank

- » Dimensions: 60" X 60"
- » Height: 22"
- » Basin Depth: 12"
- » Tank Includes: LED Lights (X4), 50 Ft² Water Filter, 24Hr Circulation Pump, Auto-Fill, Drain Valve.
- » Material: 316 Stainless Steel With Powder Coat Finish
- » LED Lights And Circulation Pump (Each Require 110V To Run)
- » 95 U.S. Gallons Required To Run Properly

4-Way Copper Fire & Water Bowl

- » Size: 30" X 30"
- » Height: 12"
- » Base: 20" X 20"
- » BTU: 65K
- » Sugg. Fire Glass: 30 Lbs.
- » Bowl Includes: Fire Pan, Burner, Gas Hose, Lava Rock.
- » Bowl Material: Copper - Hammered Patina Finish



SELF CONTAINED UNITS



72" Osiris

OPT-OSR60E Low Voltage Electronic Ignition

- » Overall Height: 58"
- » Overall Diameter: 84"

Water Tank

- » Basin Diameter: 72"
- » Basin Depth: 10"
- » Overhang: 6"
- » Height: 22"
- » Tank Includes: LED Lights (X4), 50 Ft² Water Filter, 24Hr Circulation Pump, Auto-Fill, Drain Valve
- » Material: 316 Stainless Steel With Powder Coat Finish

Copper Fire Bowl

- » Diameter: 24"
- » Height: 12"
- » Ignition: Low Voltage AC Electronic Ignition
- » BTU: 65K
- » No Fire Glass Or Lava Stone Required.
- » Bowl Includes: Fire Pan, Burner, Gas Hose, Lava Rock.
- » Bowl Material: Copper - Hammered Patina Finish
- » LED Lights And Circulation Pump (Each Require 110V To Run)
- » 120 U.S. Gallons Required To Run Properly.



60" Olympia with 360° Sedona

OPT-OLYSED60 Match Lit

OPT-OLYSED60E Electronic Ignition

- » Overall Diameter: 60"
- » Overall Height: 38"

38" 360° Concrete Fire & Water Bowl

- » Size: 38"
- » Height: 16"
- » Base: 18"
- » BTU: 45K
- » Sugg. Glass: 16lbs.
- » Bowl Includes: Fire Pan, Burner, Gas Hose, Lava Rock.
- » Bowl Material: GFRC Concrete

Water Tank

- » Diameter: 60"
- » Height: 22"
- » Basin Depth: 12"
- » Tank Includes: LED Lights (X4), 50 Ft² Water Filter, 24 hr. Circulation Pump, Auto-Fill, Drain Valve
- » LED Lights And Circulation Pump (Each Require 110V To Run)
- » 95 U.S. Gallons Required To Run Properly.

SELF CONTAINED FIRE & WATER FOUNTAINS

89" Atlas Fire & Water Fountain

OPT-ATL89 Match Lit
OPT-ATL89E12 Electronic Ignition

- » Overall Height: 76"
- » Overall Diameter: 89"

Top Basin

- » Basin Inner Diameter: 55"
- » Basin Outer Diameter: 67"
- » Basin Depth: 12"
- » Height: 48"
- » BTU: 55,000
- » Tank Includes: LED Lights, 50 Ft² Water Filter, 24Hr Circulation Pump, Auto-Fill, Drain Valve
- » Material: 316 Stainless Steel With Powder Coat Finish

Lower Basin

- » Basin Inner Diameter: 87"
- » Basin Outer Diameter: 89"
- » Height: 30"
- » Ignition: Match Lit / Low Voltage Electronic Ignition
- » No Fire Glass Or Lava Stone Required.
- » LED Lights And Circulation Pump (Each Require 110V To Run)
- » 120 U.S. Gallons Required To Run Properly.



Fountain shown in Copper Vein Finish
Globe is done in Acrylic Material

OPT-ACRGLB

SELF CONTAINED UNITS

72" Olympia 3-Way Spill

OPT-OLY723W Match Lit
OPT-OLY723WE Electronic Ignition

- » Overall Height: 58"
- » Overall Diameter: 72"

Water Tank

- » Basin Diameter: 72"
- » Basin Depth: 10"
- » Overhang: 6"
- » Height: 22"
- » Tank Includes: LED Lights (X4), 50 Ft² Water Filter, 24Hr Circulation Pump, Auto-Fill, Drain Valve
- » Material: 316 Stainless Steel With Powder Coat Finish

Copper Fire Bowl

- » Diameter: 24"
- » Height: 12"
- » Ignition: Match Lit / Low Voltage Electronic Ignition
- » BTU: 65K
- » No Fire Glass Or Lava Stone Required.
- » Bowl Includes: Fire Pan, Burner, Gas Hose, Lava Rock.
- » Bowl Material: Copper - Hammered Patina Finish
- » LED Lights And Circulation Pump (Each Require 110V To Run)
- » 120 U.S. Gallons Required To Run Properly.



Custom Sizes Available



GOT CUSTOM SPILLWAY REQUESTS?
WE WILL DO IT FOR YOU!

SELF CONTAINED FIRE & WATER FOUNTAINS

60" Round Olympian - 360° Spill



OPT-OLY60 Match Lit
OPT-OLY60E12 Electronic Ignition

- » Overall Diameter: 60"
- » Overall Height: 36"

Water Tank

- » Diameter: 60"
- » Height: 22"
- » Basin Depth: 12"
- » Tank Includes: LED Lights (X4), 50 Ft² Water Filter, 24Hr Circulation Pump, Auto-Fill, Drain Valve.
- » Material: 316 Stainless Steel With Powder Coat Finish

360° Copper Fire & Water Bowl

- » Diameter: 30"
- » Height: 12"
- » Base Diameter: 16"
- » Ignition: Match Lit / Low Voltage Electronic Ignition
- » BTU: 65K
- » Sugg. Fire Glass: 25 Lbs.
- » Bowl Includes: Fire Pan, Burner, Gas Hose, Lava Rock.
- » Bowl Material: Copper - Hammered Patina Finish
- » LED Lights And Circulation Pump (Each Require 110V To Run)
- » 80 U.S. Gallons Required To Run Properly.

86" Round Olympian Concrete - 360° Spill

OPT-OLY86-RF Match Lit
OPT-OLY86E12-RF Electronic Ignition

- » Overall Diameter: 86"
- » Overall Height: 36"

Water Tank

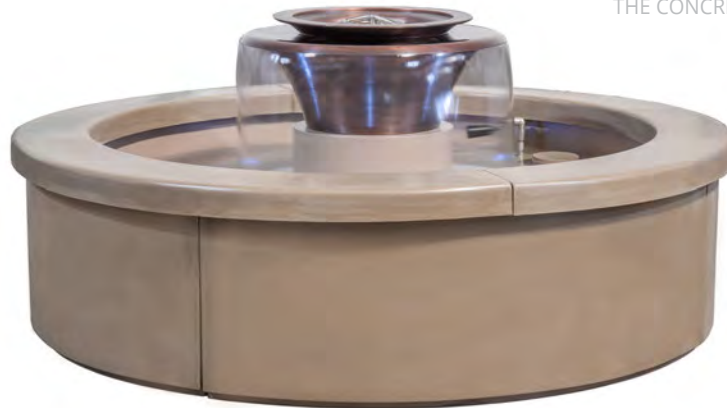
- » Diameter: 86"
- » Height: 23"
- » Basin Depth: 12"
- » Tank Includes: LED Lights (X4), 50 Ft² Water Filter, 24Hr Circulation Pump, Auto-Fill, Drain Valve.
- » Material: 316 Stainless Steel With Powder Coat Finish

360° Copper Fire & Water Bowl

- » Diameter: 36"
- » Height: 14"
- » Base Diameter: 20"
- » Ignition: Match Lit / Low Voltage Electronic Ignition
- » BTU: 65K
- » Sugg. Fire Glass: 25 Lbs.
- » Bowl Includes: Fire Pan, Burner, Gas Hose, Lava Rock.
- » Bowl Material: Copper - Hammered Patina Finish
- » LED Lights And Circulation Pump (Each Require 110V To Run)
- » 80 U.S. Gallons Required To Run Properly.



THIS IS THE FRAME USED FOR THE CONCRETE



CONCRETE BASE OPTION SHOWN ABOVE

Metallic Finishes and Rustic Finishes are available at an extra charge

When ordering, specify the concrete color by adding the color code to the end of the Part #. Example: 27" Brown Sedona Water Bowl = OPT-27RWO-BRN

Black -BLK	Ash -ASH	Natural Gray -NGY	Gray -GRY	White Limestone -LIM	Chocolate -CHC	Chestnut -CST	Brown -BRN	Vanilla -VAN
Rustic Gray -RGR	Moss Stone -RMS	Rustic White -RWH	Coffee -RCF	Slate -MSL	Silver -MSV	Pearl -MPR	Bronze -MBR	Copper -MCP

SELF-CONTAINED UNIT REPLACEMENT PARTS



Drain Valve

OPT-RP-DRV

- » Used to drain water from water features.
- » Water hose may be connected to redirect water.
- » Outdoor rated.



Filter Cartridge

OPT-RP-FCRT

- » Filter cartridge for self-cleaning feature of self-contained water features.
- » Diameter: 4.5"
- » Height: 9.5"



LED 12V Transformer

OPT-RP-LED12V

- » Transformer for LED Lights on Self-Contained Water Features.
- » L: 2.75 W: 1.5"
- » Height: 9.5"



1.5" Union & Slip

OPT-RP-UNT

- » Pump union with 1.5" female buttress thread
- » 1.5" Slip



LED Housing Unit

OPT-RP-LEDHU

- » Housing Unit For LED Light
- » Unit for use in Self-Contained Water Features



LED Light Feature

OPT-RP-LEDLF

- » LED Light Feature along with its cable.
- » Feature is to be encased within LED Housing Unit.
- » Feature for use in Self-Contained Water Features



LED Module

OPT-RP-LEDMD

- » LED Light Module.
- » Module to be connected to 12V Transformer for Self-Contained Water Features



Water Pump

OPT-RP-WPMP

- » Self-Contained water feature water pump.
- » Pump cycles water within water feature for continuous use.



Auto Refill

OPT-AUTORF

- » Auto Refill Unit for use in Self-Contained Water Features
- » Maintains water levels



THE OUTDOOR PLUS

USA MANUFACTURER OF FIRE & WATER PRODUCTS



Gas Fire Torches

FIRE TORCHES

All Torch Heads, TOP Torches and TopLite Torches are all hand made from stainless steel. They are compatible with either natural gas or liquid propane and operate at 20K BTU/hr. Torches are for outdoor use only and should not be used during rain. Available in match lit ignition options only.

2 Types of Bases & Mounting Options



TOP Torch Base

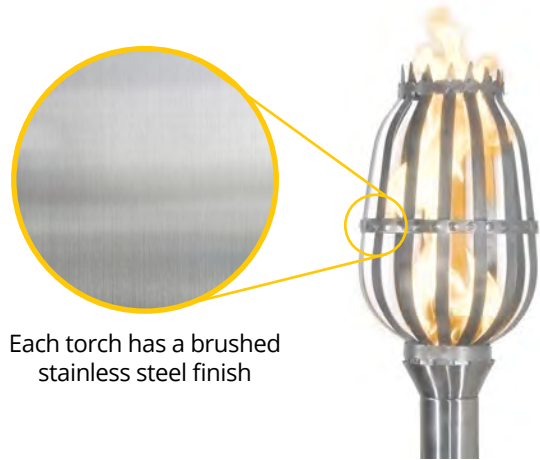
- » Mounts on 2½ hollow post
- » Built-in needle valve for precise flame adjustment.
- » 3/8" flared gas connection
- » 20K BTUs



TopLite Torch Base

- » Mounts on ½" NPT gas pipe
- » Speedy Installation
- » On/Off Valve
- » 20K BTUs

All of T.O.P's torches are made with 304 Stainless Steel. This protects them from the constant heating & cooling down which can break down other metals. Stainless Steel also prevents corrosion which can be caused by the natural elements.



Each torch has a brushed stainless steel finish



FIRE TORCH ACCESSORIES

TOP Torch & Post Complete Kit

The TOP Torch & Post Kit comes with all components needed to install and operate a single TOP Torch. With this kit, there is no need to order all components à la carte!

Liquid Propane Kits Include

- » Torch Head
- » In Ground Post
- » Anchoring Post
- » LP Regulator (8')
- » Deck Post

Natural Gas Kits Include

- » Torch Head
- » In Ground Post
- » Anchoring Post
- » SS Whistle Free Hose (1/2")
- » Deck Post

STYLE	LIQUID PROPANE	NATURAL GAS
Ellipse	OPT-TPK1LP	OPT-TPK1NG
Globe	OPT-TPK2LP	OPT-TPK2NG
Trojan	OPT-TPK3LP	OPT-TPK3NG
Vent	OPT-TPK4LP	OPT-TPK4NG
Hercules	OPT-TPK5LP	OPT-TPK5NG
Lantern	OPT-TPK6LP	OPT-TPK6NG
Roman	OPT-TPK7LP	OPT-TPK7NG
Flower	OPT-TPK8LP	OPT-TPK8NG
Basket	OPT-TPK9LP	OPT-TPK9NG
Urn	OPT-TPK10LP	OPT-TPK10NG
Gothic	OPT-TPK11LP	OPT-TPK11NG
Spiral	OPT-TPK12LP	OPT-TPK12NG
Tropical	OPT-TPK13LP	OPT-TPK13NG
Honeycomb	OPT-TPK14LP	OPT-TPK14NG
Havana	OPT-TPK15LP	OPT-TPK15NG
Box Weave	OPT-TPK16LP	OPT-TPK16NG
Coral	OPT-TPK17LP	OPT-TPK17NG
Diamond	OPT-TPK18LP	OPT-TPK18NG
Cubist	OPT-TPK19LP	OPT-TPK19NG
Hawi	OPT-TPK20LP	OPT-TPK20NG
Comet	OPT-TPK21LP	OPT-TPK21NG
Shotgun	OPT-TPK22LP	OPT-TPK22NG
Sunshine	OPT-TPK23LP	OPT-TPK23NG
Cyclone	OPT-TPK24LP	OPT-TPK24NG
Tiki	OPT-TPK25LP	OPT-TPK25NG



In-Ground Post

OPT-TTBP

- » **ONLY compatible with TOP Torches**
- » NOT compatible with TopLite Torches
- » Finish: Black Powder Coat
- » Diameter: 2 1/2"
- » Total Height: 80"
- » 16" Anchor Post
- » 68" Post



Tapered for Easy Assembly
*Available in all Powder Coat Variations

Access Hole

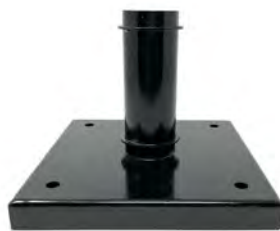
NG - Lets you install an in-line manual shut off valve
LP - Lets you run an LP regulator hose out and to the propane tank



Propane Tank Cover

OPT-LPCOVER

- » Black Canvas Cover.
- » For standard 20 lbs LP Tank



Deck Post Mount

OPT-TTDP

- » **Compatible with In-Ground Post only (Above)**
- » Designed to aid in mounting the post on any hard surface (wood, concrete, etc.)
- » Material: Steel
- » Finish: Black Powder Coat
- » Opening: 2 5/8"
- » Post sold separately
- » Available in all Powder Coat Variations



Top Torch Column Mount

OPT-TTCM

- » **ONLY compatible with TOP Torches**
- » NOT compatible with TopLite Torches
- » Material: Steel
- » Finish: Black Powder Coat
- » Length/Width: 8"
- » Height: 8"
- » Available in all Powder Coat Variations

A black tripod torch stand is shown in a garden setting. The stand has two torches mounted on top, both of which are lit, with bright orange and yellow flames. The torches have a decorative, perforated metal body. The stand is made of black powder-coated steel. In the background, there is a green lawn, a concrete path, and a wall with various plants and trees. The lighting suggests it is late afternoon or early evening.

TopLite Torch Stand - Liquid Propane

OPT-TSTNDLP

- » Powder Coated Steel
- » Footprint: 18" x 18"
- » Torch to Torch Distance: 36"
- » Total Height: 78"
- » Gas Connection: 1/2"
- » Includes SS Whistle Free Hose

TopLite Torch Stand - Natural Gas

OPT-TSTNDNG

- » Powder Coated Steel
- » Footprint: 18" x 18"
- » Torch to Torch Distance: 36"
- » Total Height: 78"
- » Gas Connection: 1/2"
- » Includes LP Regulator

Torch Styles

Torch Head Part Numbers

STYLE	ORIGINAL TOP TORCHES	TOP-LITE TORCHES	DIAMETER	HEIGHT	STYLE	ORIGINAL TOP TORCHES	TOP-LITE TORCHES	DIAMETER	HEIGHT
Ellipse	OPT-TT1M	OPT-TCH1SS	3 ¾"	14"	Havana	OPT-TT15M	OPT-TCH15SS	3 ¾"	14"
Globe	OPT-TT2M	OPT-TCH2SS	11"	14"	Woven	OPT-TT16M	OPT-TCH16SS	3 ¾"	14"
Trojan	OPT-TT3M	OPT-TCH3SS	8"	14"	Coral	OPT-TT17M	OPT-TCH17SS	3 ¾"	14"
Vent	OPT-TT4M	OPT-TCH4SS	3 ¾"	14"	Diamond	OPT-TT18M	OPT-TCH18SS	3 ¾"	14"
Hercules	OPT-TT5M	OPT-TCH5SS	8"	14"	Cubist	OPT-TT19M	OPT-TCH19SS	3 ¾"	14"
Lantern	OPT-TT6M	OPT-TCH6SS	8"	14"	Hawi	OPT-TT20M	OPT-TCH20SS	3 ¾"	14"
Roman	OPT-TT7M	OPT-TCH7SS	8"	14"	Comet	OPT-TT21M	OPT-TCH21SS	3 ¾"	14"
Flower	OPT-TT8M	OPT-TCH8SS	10"	14"	Shotgun	OPT-TT22M	OPT-TCH22SS	3 ¾"	14"
Basket	OPT-TT9M	OPT-TCH9SS	8"	14"	Sunshine	OPT-TT23M	OPT-TCH23SS	3 ¾"	14"
Urn	OPT-TT10M	OPT-TCH10SS	9"	14"	Cyclone	OPT-TT24M	OPT-TCH24SS	3 ¾"	14"
Gothic	OPT-TT11M	OPT-TCH11SS	9"	14"	Tiki	OPT-TT25M	OPT-TCH25SS	3 ¾"	14"
Spiral	OPT-TT12M	OPT-TCH12SS	7"	14"	Bull & Star	OPT-TT29M	OPT-TCH29SS	3 ¾"	14"
Tropical	OPT-TT13M	OPT-TCH13SS	3 ¾"	14"	Mosaic	OPT-TT30M	OPT-TCH30SS	3 ¾"	14"
Honeycomb	OPT-TT14M	OPT-TCH14SS	3 ¾"	14"	Mosaic - Wide	OPT-TT31M	OPT-TCH31SS	3 ¾"	14"



Cone Torch Head - Powder Coat

- » OPT-TT26M
- » Torch Height: 18"
- » All torch heads do not include pole stand
- » Available in powder coat variations



Cone Torch Head - Copper

- » OPT-TT27M
- » Torch Height: 18"
- » All torch heads do not include pole stand



Fin Torch Head - Stainless Steel

- » OPT-TT28M
- » Torch Height: 18"
- » All torch heads do not include pole stand
- » Head made in Stainless Steel



Granada Column Ornament

- » OPT-FTWRTOP
- » Height: 12"
- » Diameter: 22"
- » Base: 6" x 6"
- » Head made in Stainless Steel



Bastille Corten Steel Column Ornament

- » OPT-FTWRTOP3
- » Height: 36"
- » L: 22" x W: 22"
- » Head made in Corten Steel



Bastille Hammered Copper Column Ornament

- » OPT-FTWRTOP2
- » Height: 36"
- » L: 22" x W: 22"
- » Head made in Hammered Copper



Pointe Stainless Steel Column Ornament

- » OPT-FTWRTOP4
- » Height: 36"
- » L: 22" x W: 22"
- » Head made in Stainless Steel



Ellipse



Globe



Trojan



Vent



Hercules



Lantern



Roman



Flower



Basket



Urn



Gothic



Spiral



Tropical



Honeycomb



Havana



Woven



Coral

Diamond

Cubist

Hawi



Comet

Shotgun

Sunshine

Cyclone



Tiki

Bull & Star

Mosaic

Mosaic - Wide

The Outdoor Plus' *Water-Over-Fire Pit Insert* is your solution to creating a unique fire feature. Its simple form allows it to drop into place like any other drop in pan, and its plug & play features allows for easy installation and operation.

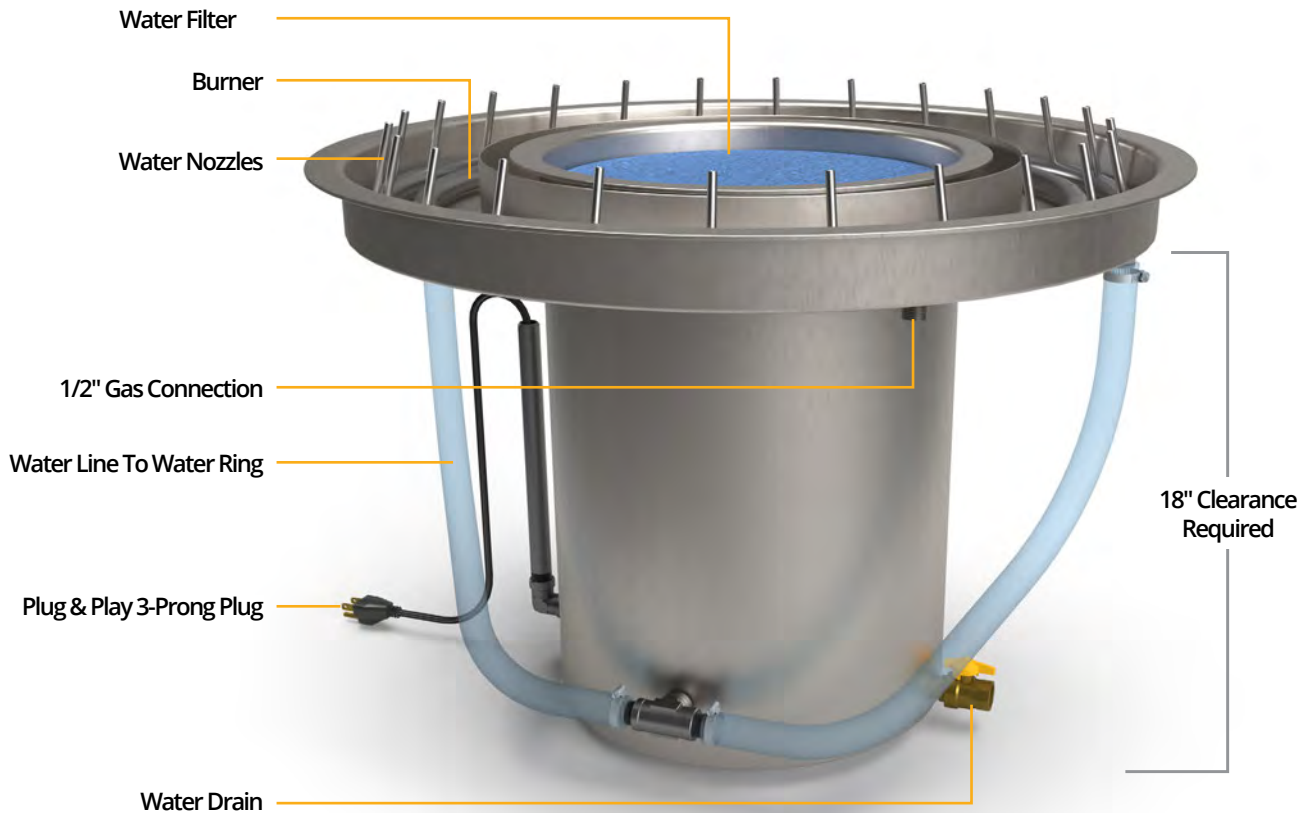
The *Water-Over-Fire Kit* features all components necessary for plug & play operation: Burner, Water Ring, Water Lines, Water Drain, Water Pump (110V), Filter & Debris Catcher. 1/2" MIP gas Inlet. All water over fire kits are NG or LP compatible.

PART #	DIAMETER	MINIMUM CUT-OUT	HEIGHT	SUGG. GLASS	BTU
OPT-300-WOFKIT-25	25"	25.5"	18"	35 lbs.	110,000
OPT-300-WOFKIT-31	31"	31.5"	18"	45 lbs.	130,000
OPT-300-WOFKIT-37	37"	37.5"	18"	55 lbs.	160,000

The water reservoirs requires an 18" clearance below.



UNIT OVERVIEW





ORNAMENTS & SCULPTURES

Our collection of ornaments are a unique way to add personality to any of your fire features. They are suitable for both fire pits and fireplaces and install easily. Some of T.O.P.'s ornaments replace your unit's burner and other ornaments simply sit on top of the burner. As always, we are able to manufacture custom sizes, shapes and even your custom designs!

Black Steel Fireplace Waves

Mild Steel Construction. Replaces pre-existing burner



PART #	DIMENSIONS	HEIGHT	INLET	BTU
OPT-WBB24	24" x 6"	18"	1/2"	80K
OPT-WBB30	30" x 6"	18"	1/2"	100K
OPT-WBB36	36" x 6"	18"	1/2"	120K



Stainless Steel Fireplace Waves

Stainless Steel Construction. Replaces pre-existing burner



PART #	DIMENSIONS	HEIGHT	INLET	BTU
OPT-WBS24	24" x 6"	18"	1/2"	80K
OPT-WBS30	30" x 6"	18"	1/2"	100K
OPT-WBS36	36" x 6"	18"	1/2"	120K



Stainless Steel Tangled Fireplace Burner

Stainless Steel Construction. Replaces pre-existing burner



PART #	DIMENSIONS	HEIGHT	INLET	BTU
OPT-TNG24	24" x 8"	8"	1/2"	80K
OPT-TNG30	30" x 8"	8"	1/2"	100K



ORNAMENTS & SCULPTURES

Fireplace Log And Tray Set

Includes: Steel Logs, Steel Grate, Steel Tray and Burner



PART #	WIDTH	DEPTH	HEIGHT	INLET	BTU
OPT-18SLS	18"	10"	14"	1/2"	90K
OPT-24SLS	24"	10"	14"	1/2"	90K
OPT-30SLS	30"	10"	14"	1/2"	95K
OPT-36SLS	36"	10"	14"	1/2"	100K

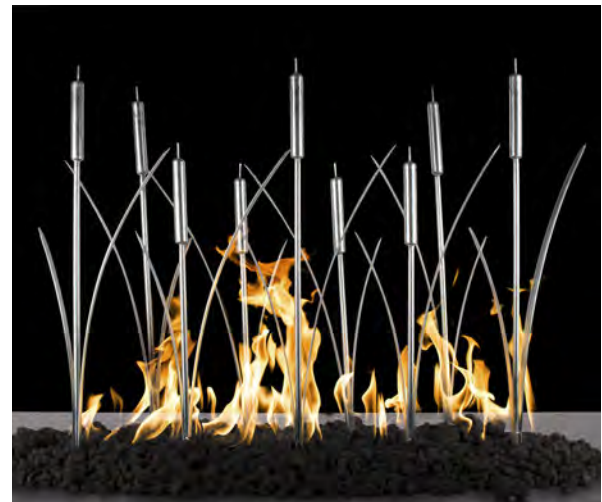


Cat Tail Fireplace Burner

Stainless Steel Construction. Replaces pre-existing burner



PART #	WIDTH	DEPTH	HEIGHT	INLET	BTU
OPT-18WRF18	18"	6"	18"	1/2"	90K
OPT-18WRF24	24"	6"	18"	1/2"	90K
OPT-18WRF30	30"	6"	18"	1/2"	95K
OPT-18WRF36	36"	6"	18"	1/2"	100K



Mild Steel Hoops

Ornament only. Sets over existing burner



PART #	DIMENSIONS	HEIGHT
OPT-STHP24	24" x 16"	18"
OPT-STHP30	30" x 16"	18"



ORNAMENTS & SCULPTURES

Steel Fire Pit Log Pile

Ornament only. Sets over existing burner



PART #	DIAMETER	HEIGHT
OPT-1924	19"	24"



Steel Upright Logs

Ornament only. Sets over existing burner. Lava not included



PART #	DIMENSIONS	HEIGHT
OPT-STLOG24	24" x 10"	18"
OPT-STLOG30	30" x 10"	18"



Steel Fire Balls

Ornament only. Sets over existing burner.
Sold individually.



PART #	DIAMETER	FINISH
OPT-FB4	4"	Steel
OPT-FB6	6"	Steel



ORNAMENTS & SCULPTURES

Gas Burning Bush

Stainless Steel Construction. Male Connection



PART #	DIAMETER	HEIGHT	INLET	BTU
OPT-BB	16"	18"	1/2"	65k

Gas Fire Tree Burner

Stainless Steel Construction. Male Connection



PART #	WIDTH	HEIGHT	INLET	BTU
OPT-3000	24"	24"	1/2"	180k

Gas Lotus Flower Ornament Burner

Stainless Steel Construction. Male Connection



PART #	DIAMETER	HEIGHT	INLET	BTU
OPT-LF	18"	9"	1/2"	65k

Gas Fire Globe Burner

Stainless Steel Construction. Male Connection



PART #	DIAMETER	HEIGHT	INLET	BTU
OPT-FG12	12"	12"	1/2"	75K
OPT-FG18	18"	18"	1/2"	125K
OPT-FG24	24"	24"	1/2"	175K

ORNAMENTS & SCULPTURES

Bird's Nest

Includes Ornament & SS Burner



Mild Steel



Stainless Steel



PART #	DIAMETER	HEIGHT	BURNER	INLET	BTU
MILD STEEL					
OPT-30BNS	30"	18"	24"	1/2"	150K
OPT-36BNS	36"	18"	24"	1/2"	150K
OPT-48BNS	48"	18"	36"	3/4"	200K
STAINLESS STEEL					
OPT-30BN	30"	18"	24"	1/2"	150K
OPT-36BN	36"	18"	24"	1/2"	150K
OPT-48BN	48"	18"	36"	3/4"	200K

1/2" Mild Steel Desert Sticks

Ornament only. Sets over existing burner



PART #	DIAMETER	HEIGHT
OPT-DS	20"	24"



1/2" Solid Steel Logs

Ornament only. Sets over existing burner



PART #	DIAMETER	HEIGHT
OPT-SL	18"	20"



ORNAMENTS & SCULPTURES

Steel Triangle Sculpture

Ornament only. Sets over existing burner



PART #	DIMENSIONS	HEIGHT
OPT-STTRI24	24" x 14"	22"
OPT-STTRI30	30" x 14"	22"



Stainless Steel Polished Logs

Ornament only. Sets over existing burner



PART #	DIMENSIONS	HEIGHT
OPT-CS2410	24" x 10"	18"
OPT-CS3010	30" x 10"	18"



1/4" Milled Steel Fire Twigs

Ornament only. Sets over existing burner



PART #	DIMENSIONS	HEIGHT
OPT-STWG24	24" x 10"	18"
OPT-STWG30	30" x 10"	18"



Genesis Ornament

Ornament only. Sets over existing burner

PART #	DIMENSIONS	HEIGHT
OPT-GEN24	24" x 15"	18"
OPT-GEN36	36" x 15"	18"



FIRE PIT ADD ONS



Glass comes in 25lb bags. Lava chunks come in 1 cubic foot quantity. Polished lava comes in 1/2 cubic foot quantity.
 All options are suitable for any type of fire. We suggest covering the burner a maximum of 1 inch.



How Much Glass Does My Fire Pit Need?

Use this table to decide how much glass you will need for your fire feature's burning area. These amounts are for units with a burning area depth of about 2".

Rectangular Burn Area

LENGTH	WIDTH	GLASS	LENGTH	WIDTH	GLASS	LENGTH	WIDTH	GLASS	LENGTH	WIDTH	GLASS
24"	6"	17 lbs.	24"	8"	20 lbs.	24"	12"	34 lbs.	24"	18"	45 lbs.
30"	6"	21 lbs.	30"	8"	25 lbs.	30"	12"	42 lbs.	30"	18"	56 lbs.
36"	6"	25 lbs.	36"	8"	30 lbs.	36"	12"	50 lbs.	36"	18"	67 lbs.
42"	6"	29 lbs.	42"	8"	35 lbs.	42"	12"	58 lbs.	42"	18"	79 lbs.
48"	6"	34 lbs.	48"	8"	40 lbs.	48"	12"	68 lbs.	48"	18"	90 lbs.
60"	6"	42 lbs.	60"	8"	50 lbs.	60"	12"	84 lbs.	60"	18"	112 lbs.
72"	6"	50 lbs.	72"	8"	60 lbs.	72"	12"	100 lbs.	72"	18"	135 lbs.
84"	6"	59 lbs.	84"	8"	70 lbs.	84"	12"	118 lbs.	84"	18"	157 lbs.
96"	6"	67 lbs.	96"	8"	80 lbs.	96"	12"	134 lbs.	96"	18"	180 lbs.

Round Burn Area

DIAMETER	GLASS
13"	15 lbs.
19"	30 lbs.
25"	50 lbs.
31"	80 lbs.
37"	125 lbs.
48"	192 lbs.
60"	300 lbs.

Square Burn Area

SIZE	GLASS
16.5"	15 lbs.
18"	30 lbs.
24"	50 lbs.
30"	80 lbs.
36"	125 lbs.
48"	240 lbs.
60"	375 lbs.

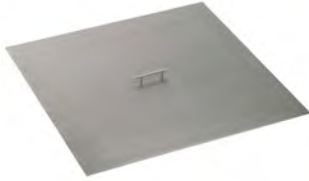
FIRE PIT ADD ONS

Fire Pit Lids

Fire Pit Covers will protect your fire pit year round from the harsh elements. The covers also create a table top for when the fire pit is not in use for extra food & drink space. *Note: All Fire Pit Lids are flat.*

Square Cover

304 Stainless Steel, Brushed Finish



DIMENSION	PART #
14" x 14"	OPT-14SC
16" x 16"	OPT-16SC
18" x 18"	OPT-18SC
20" x 20"	OPT-20SC
22" x 22"	OPT-22SC
24" x 24"	OPT-24SC
26" x 26"	OPT-26SC
28" x 28"	OPT-28SC
30" x 30"	OPT-30SC

DIMENSION	PART #
32" x 32"	OPT-32SC
34" x 34"	OPT-34SC
36" x 36"	OPT-36SC
38" x 38"	OPT-38SC
40" x 40"	OPT-40SC
42" x 42"	OPT-42SC
46" x 46"	OPT-46SC
50" x 50"	OPT-50SC

Rectangular Cover

304 Stainless Steel, Brushed Finish



DIMENSION	PART #
10" x 20"	OPT-RC1020
10" x 22"	OPT-RC1022
10" x 26"	OPT-RC1026
10" x 28"	OPT-RC1028
10" x 32"	OPT-RC1032
10" x 34"	OPT-RC1034
10" x 38"	OPT-RC1038
10" x 40"	OPT-RC1040
10" x 44"	OPT-RC1044
10" x 48"	OPT-RC1048
10" x 52"	OPT-RC1052
10" x 56"	OPT-RC1056
10" x 60"	OPT-RC1060
10" x 64"	OPT-RC1064
10" x 68"	OPT-RC1068
10" x 72"	OPT-RC1072
10" x 76"	OPT-RC1076
10" x 88"	OPT-RC1088
12" x 26"	OPT-RC1226
12" x 32"	OPT-RC1232
12" x 36"	OPT-RC1236
12" x 38"	OPT-RC1238
12" x 42"	OPT-RC1242
12" x 44"	OPT-RC1244
12" x 50"	OPT-RC1250
12" x 56"	OPT-RC1256
12" x 62"	OPT-RC1262
12" x 68"	OPT-RC1268
12" x 74"	OPT-RC1274
12" x 80"	OPT-RC1280
12" x 92"	OPT-RC1292
12" x 104"	OPT-RC12104
14" x 38"	OPT-RC1438
14" x 44"	OPT-RC1444
14" x 50"	OPT-RC1450
14" x 56"	OPT-RC1456
14" x 62"	OPT-RC1462

DIMENSION	PART #
14" x 68"	OPT-RC1468
14" x 74"	OPT-RC1474
14" x 80"	OPT-RC1480
14" x 92"	OPT-RC1492
14" x 104"	OPT-RC14104
16" x 28"	OPT-RC1628
16" x 40"	OPT-RC1640
16" x 52"	OPT-RC1652
16" x 64"	OPT-RC1664
16" x 68"	OPT-RC1668
16" x 76"	OPT-RC1676
16" x 82"	OPT-RC1682
16" x 88"	OPT-RC1688
16" x 106"	OPT-RC16106
18" x 38"	OPT-RC1838
18" x 44"	OPT-RC1844
18" x 54"	OPT-RC1854
18" x 68"	OPT-RC1868

Round Cover

304 Stainless Steel, Brushed Finish



DIAMETER	PART #
17"	OPT-17RC
21"	OPT-21RC
22"	OPT-22RC
23"	OPT-23RC
24"	OPT-24RC
25"	OPT-25RC
26"	OPT-26RC
27"	OPT-27RC
28"	OPT-28RC

DIAMETER	PART #
29"	OPT-29RC
30"	OPT-30RC
32"	OPT-32RC
33"	OPT-33RC
34"	OPT-34RC
35"	OPT-35RC
38"	OPT-38RC
41"	OPT-41RC
42"	OPT-42RC
44"	OPT-44RC
47"	OPT-47RC
48"	OPT-48RC
50"	OPT-50RC
52"	OPT-52RC
54"	OPT-54RC
58"	OPT-58RC
60"	OPT-60RC

Cone Cover

Aluminum, Black Powder Coat Finish



DIAMETER	HEIGHT	PART #
17"	3"	OPT-RCB17
23"	3"	OPT-RCB23
29"	4"	OPT-RCB29
35"	5"	OPT-RCB35
41"	6"	OPT-RCB41
47"	7"	OPT-RCB47



Stainless Steel Access Doors

Access Doors come equipped with a lock latch. Key Included. Brushed Finish.

PART #	DOOR DIMENSIONS	OUTER DIMENSION	DEPTH
OPT-ADSS88	8" x 8"	10" x 10"	1.5"
OPT-ADSS1010	10" x 10"	12" x 12"	1.5"
OPT-ADSS1212	12" x 12"	14" x 14"	1.5"
OPT-ADSS1417	14" x 17"	16" x 19"	1.5"



Black Cone Cover & Heat Reflector

Includes: Hook with Mounting Bracket and Black Cone Cover

PART #	DIAMETER	HEIGHT
OPT-RCB17HRF	17"	48"
OPT-RCB23HRF	23"	48"
OPT-RCB29HRF	29"	48"
OPT-RCB35HRF	35"	48"
OPT-RCB41HRF	41"	48"
OPT-RCB47HRF	47"	48"

FIRE PIT ADD ONS

Glass Wind Guards

Glass Wind Guards provide protection where extra caution is necessary and preserve flames in windy conditions. They are intended to be placed on top of the fire pit, not inside.



Rectangular Wind Guard

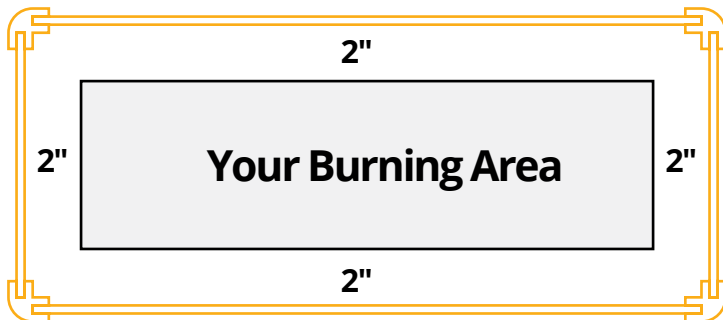
WIND GUARD SIZE	PART #
20" x 40" x 8"	OPT-WG-2040
13" x 22" x 8"	OPT-WG-2213
13" x 24" x 8"	OPT-WG-2413
14" x 24" x 8"	OPT-WG-2414
23" x 27" x 8"	OPT-WG2723
13" x 28" x 8"	OPT-WG-2813
14" x 28" x 8"	OPT-WG-2814
16" x 28" x 8"	OPT-WG-2816
22" x 28" x 8"	OPT-WG-2822
23" x 33" x 8"	OPT-WG-3323
13" x 34" x 8"	OPT-WG-3413
14" x 34" x 8"	OPT-WG-3414
22" x 34" x 8"	OPT-WG-3422
13" x 36" x 8"	OPT-WG-3613
14" x 36" x 8"	OPT-WG-3614
14" x 38" x 8"	OPT-WG-3814
23" x 39" x 8"	OPT-WG-3923
13" x 40" x 8"	OPT-WG-4013
14" x 40" x 8"	OPT-WG-4014
16" x 40" x 8"	OPT-WG-4016
22" x 40" x 8"	OPT-WG-4022
14" x 44" x 8"	OPT-WG-4414
23" x 45" x 8"	OPT-WG-4523
13" x 46" x 8"	OPT-WG-4613

WIND GUARD SIZE	PART #
14" x 46" x 8"	OPT-WG-4614
16" x 46" x 8"	OPT-WG-4616
20" x 46" X 8"	OPT-WG-4620
22" x 46" X 8"	OPT-WG-4622
23" x 51" x 8"	OPT-WG-5123
13" x 52" X 8"	OPT-WG-5213
14" x 52" X 8"	OPT-WG-5214
16" x 52" X 8"	OPT-WG-5216
22" x 52" X 8"	OPT-WG-5222
13" x 58" X 8"	OPT-WG-5813
14" x 58" X 8"	OPT-WG-5814
13" x 64" X 8"	OPT-WG-6413
16" x 64" X 8"	OPT-WG-6416
22" x 64" X 8"	OPT-WG-6422
13" x 70" X 8"	OPT-WG-7013
14" x 70" X 8"	OPT-WG-7014
18" x 70" X 8"	OPT-WG-7018
20" x 70" X 8"	OPT-WG-7020
13" x 76" X 8"	OPT-WG-7613
16" x 76" X 8"	OPT-WG-7616
22" x 76" X 8"	OPT-WG-7622
14" x 82" X 8"	OPT-WG-8214
16" x 82" X 8"	OPT-WG-8216
14" x 94" X 8"	OPT-WG-9414
14" x 106" X 8"	OPT-WG-10614
16" x 106" X 8"	OPT-WG-10616

What Size Should My Wind Guard Be?

The ideal size of a wind guard should be the size of your burning area **plus 2 inches on each side**. This allows you to still use a steel cover when the unit is not in use & reduces soot build up on the glass.

Ex: 24" x 24" burning area should use a 28" x 28" Glass Wind Guard.



Square Wind Guard

WIND GUARD SIZE	PART #
14" x 14" x 8"	OPT-WG-1414
22" x 22" x 8"	OPT-WG-2222
24" x 24" x 8"	OPT-WG-2424
26" x 26" x 8"	OPT-WG-2626
28" x 28" x 8"	OPT-WG-2828
30" x 30" x 8"	OPT-WG-3030
32" x 32" x 8"	OPT-WG-3232

WIND GUARD SIZE	PART #
34" x 34" x 8"	OPT-WG-3434
38" x 38" x 8"	OPT-WG-3838
40" x 40" x 8"	OPT-WG-4040
44" x 44" x 8"	OPT-WG-4444
52" x 52" x 8"	OPT-WG-5252



Stainless Steel Flame Guard

The Stainless Steel Flame Guards are all custom and made to order. The perforated material blocks any unwanted debris as well. We can make them in any size & any shape to fit any new or pre-existing fire feature. Email or call today to inquire.

Mild Steel Flame Guard

Mild Steel Flame Guards are all custom and made to order. We can make them in any size & any shape to fit any new or pre-existing fire feature. Email or call today to inquire.

ALL AVAILABLE CANVAS COVERS

Fire Pit & Bowl Canvas Covers

Make sure your fire pit is protected from the elements by acquiring a durable and long-lasting canvas cover. These covers are tougher and more resistant than traditional canvas covers. Canvas Cover include a draw string for a snug and secure fit.

For a cover that will match you product, simply add the height of the product you are purchasing.

Example: OPT-CVR-3624-23H - "23H" being the height of the product

Rectangular Fire Pit Covers

DIMENSION	PART #	HEIGHTS
36" x 24"	OPT-CVR-3624	23"
36" x 30"	OPT-CVR-3630	24"
38" x 34"	OPT-CVR-3834	22"
46" x 22"	OPT-CVR-4622	24"
48" x 10"	OPT-CVR-4810	10"
48" x 20"	OPT-CVR-4820	12"
48" x 24"	OPT-CVR-4824	13", 24"
48" x 28"	OPT-CVR-4828	14", 15", 16", 18", 21", 24"
48" x 29"	OPT-CVR-4829	17"
48" x 30"	OPT-CVR-4830	12", 24"
48" x 32"	OPT-CVR-4832	15", 24"
48" x 36"	OPT-CVR-4836	16", 24", 30", 36"
52" x 34"	OPT-CVR-5234	22"
54" x 24"	OPT-CVR-5424	13"
56" x 38"	OPT-CVR-5638	16"
60" x 10"	OPT-CVR-6010	10"
60" x 20"	OPT-CVR-6020	12"
60" x 24"	OPT-CVR-6024	13", 15", 24"
60" x 28"	OPT-CVR-6028	14", 15", 16", 18", 21", 24"
60" x 29"	OPT-CVR-6029	17"
60" x 30"	OPT-CVR-6030	12", 15", 16", 24"
60" x 32"	OPT-CVR-6032	15", 24"
60" x 36"	OPT-CVR-6036	16", 24", 30"
66" x 34"	OPT-CVR-6634	22"
66" x 38"	OPT-CVR-6638	16"
72" x 10"	OPT-CVR-7210	10"
72" x 16"	OPT-CVR-7216	16", 24"
72" x 20"	OPT-CVR-7220	12"
72" x 24"	OPT-CVR-7224	15", 24"
72" x 28"	OPT-CVR-7228	14", 15", 16", 18", 24"
72" x 30"	OPT-CVR-7230	12", 15", 16", 24"
72" x 32"	OPT-CVR-7232	15", 24"
72" x 36"	OPT-CVR-7236	16", 24", 30"
78" x 36"	OPT-CVR-7836	30"
84" x 24"	OPT-CVR-8424	16", 24"
84" x 28"	OPT-CVR-8428	14", 15", 16", 18", 24"
84" x 30"	OPT-CVR-8430	16"
84" x 32"	OPT-CVR-8432	15", 24"

Rectangular Fire Pit Covers

DIAMETER	PART #	HEIGHTS
84" x 36"	OPT-CVR-8436	16", 24"
86" x 24"	OPT-CVR-8624	27"
90" x 38"	OPT-CVR-9038	16"
96" x 28"	OPT-CVR-9628	14", 15", 18", 24"
96" x 36"	OPT-CVR-9636	24"
108" x 28"	OPT-CVR-10828	14", 15", 24"
120" x 28"	OPT-CVR-12028	15", 24"
120" x 48"	OPT-CVR-12048	30"
120" x 60"	OPT-CVR-12060	42"
144" x 48"	OPT-CVR-14448	30"
144" x 60"	OPT-CVR-14460	42"

Round Fire Pit Covers

DIAMETER	PART #	HEIGHTS
22" Round	OPT-CVR-22R	33"
30" Round	OPT-CVR-30R	14", 24"
32" Round	OPT-CVR-32R	18"
36" Round	OPT-CVR-36R	20", 24"
37" Round	OPT-CVR-37R	25"
38" Round	OPT-CVR-38R	16", 25"
42" Round	OPT-CVR-42R	12", 16", 18", 24"
43" Round	OPT-CVR-43R	24"
46" Round	OPT-CVR-46R	24"
48" Round	OPT-CVR-48R	15", 16", 17", 18", 20", 24"
54" Round	OPT-CVR-54R	20"
60" Round	OPT-CVR-60R	15", 16", 18", 20", 21", 24"
68" Round	OPT-CVR-68R	24"
72" Round	OPT-CVR-72R	18", 20", 24"
80" Round	OPT-CVR-80R	24"

Square Fire Pit Covers

DIMENSION	PART #	HEIGHTS
20" x 20"	OPT-CVR-2020	33"
24" x 24"	OPT-CVR-2424	24"
30" x 30"	OPT-CVR-3030	24"
33" x 33"	OPT-CVR-3333	22"
36" x 36"	OPT-CVR-3636	12", 15", 16", 24"
42" x 42"	OPT-CVR-4242	12", 15", 18", 24"
48" x 48"	OPT-CVR-4848	15", 16", 18", 24"
50" x 50"	OPT-CVR-5050	24"
60" x 60"	OPT-CVR-6060	16", 18", 24"



ALL AVAILABLE CANVAS COVERS

Bowl Canvas Covers

For a cover that will match you product, simply add the height of the product you are purchasing.

Example: OPT-CVR-3624-23H - "23H" being the height of the product

Bowl Covers

DIMENSION	PART #	HEIGHTS
24" Round	OPT-BCVR-24R	8", 9", 10",
27" Round	OPT-BCVR-27R	10"
30" Round	OPT-BCVR-30R	12", 14", 15"
31" Round	OPT-BCVR-31R	10", 11", 20"
32" Round	OPT-BCVR-32R	10", 12"
33" Round	OPT-BCVR-33R	11"
36" Round	OPT-BCVR-36R	12", 14" 16"
38" Round	OPT-BCVR-38R	16"
46" Round	OPT-BCVR-46R	16"

DIMENSION	PART #	HEIGHTS
48" Round	OPT-BCVR-48R	16", 17"
60" Round	OPT-BCVR-60R	15"
24" Square	OPT-BCVR-2424	10"
30" Square	OPT-BCVR-3030	10", 12", 13"
36" Square	OPT-BCVR-3636	12", 13"
32" x 24"	OPT-BCVR-3224	14"
40" x 30"	OPT-BCVR-4030	14"
48" x 36"	OPT-BCVR-4836	14"

Special Canvas Covers

For a cover that will match you product, simply add the height of the product you are purchasing.

Example: OPT-CVR-3624-23H - "23H" being the height of the product

Special Fire Pit Covers

NAME	PART #	HEIGHTS
Whitney Fire Pit	OPT-WHTCVR-484824	24"
Whitney Fire Pit	OPT-WHTCVR-606036	24"
Whitney Fire Pit	OPT-WHTCVR-727248	24"
Dana Fire Pit	OPT-DANCVR-6028	24"
Alto Fire Pit	OPT-ALTCVR-6628	24"
Alto Fire Pit	OPT-ALTCVR-7828	24"
Dixie Fire Pit	OPT-DXCVR-6024	24"
Dixie Fire Pit	OPT-DXCVR-7224	24"



EVERY COVER IS TIGHTENED WITH A DRAW STRING AND SECURED WITH A TOGGLE SPRING CLASP.



CUSTOM FIRE & WATER FEATURES

The Outdoor Plus prides itself in manufacturing everything you see here. With a fully operational manufacturing facility, we are able to custom make practically any fire pit, fire tower, scuppers, pans, burners and more. Whether its a fire pit that needs a few inches adjusted or a completely original product, the possibilities are endless. T.O.P's experienced staff and array of machinery can manufacture what you truly desire.

To inquire, send an email to sales@theoutdoorplus.com or go to theoutdoorplus.com/custom



Custom Fire Tower



Custom Arched Pan & Linear Burner



Custom 18' Self Contained Fire & Water Unit



Custom 4' Water & Planter Feature



Custom Fire & Water Feature



Custom Guitar Fire Pit with Musical Cut-Out Details



Custom 18" x 60" Desert Sticks



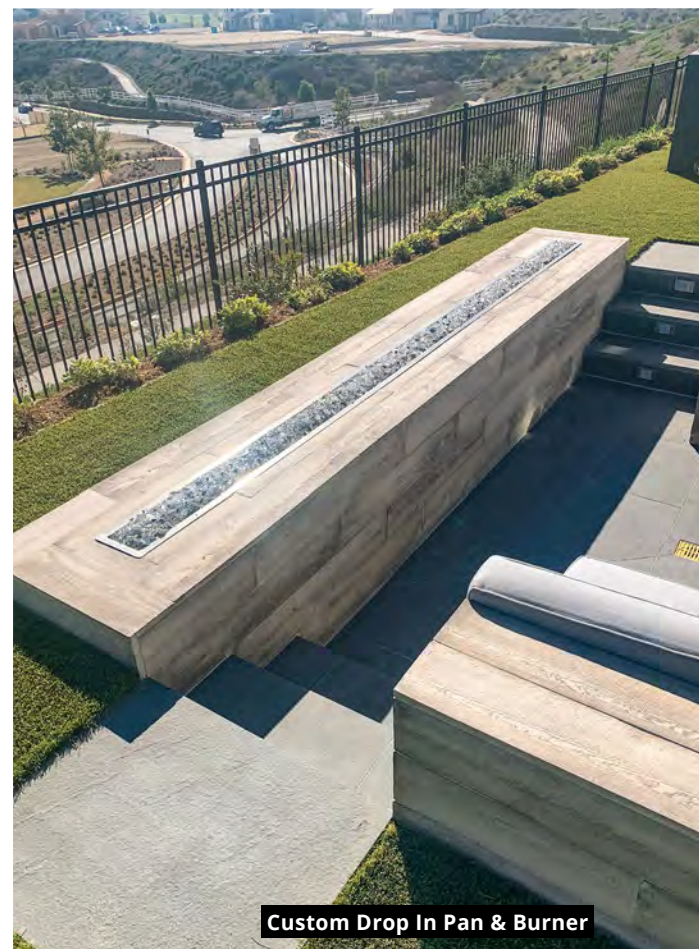
Custom Fire Pit & Custom Tile Finish



Custom Size Unity Fire Pit



Custom Stainless Steel Tower



Custom Drop In Pan & Burner



Custom Copper Scupper



Custom Curved Burner

WARRANTY & FREIGHT POLICIES

PRODUCT WARRANTY

The Outdoor Plus Company (TOP) warranties fire pits against manufacturing defects that prevent safe and correct function as follows:

Warranty periods are as follows:

Electronics, Gas Valves, & Pilot Assembly:

Commercial - 6 Months ; Residential - 1 Year

Stainless Steel & Aluminum Pans:

Commercial - 1 year; Residential - 5 years

Burner Ring & Burner Bars:

Lifetime Warranty

Electrodes & Spark Igniters

Not Warranted (due to lifespan)

- This commences from the date of original sale / shipment from The Outdoor Plus
- The warranty on parts and in-house labor will apply only to claims presented to us by T.O.P's original customer and is in lieu of all other warranties expressed or implied.
- The defective product must be sent back to TOP with a Return Merchandise Authorization (RMA) issued by TOP for that specific product which states the nature of the defect or warranty claim. The original purchase information will be required.
- Product to be returned should be packed carefully. The Outdoor Plus is not responsible for shipping damage on returned items.
- RMA's are only valid for 30 days which states the nature of the defect or warranty claim after the expiration date.
- The RMA number must be indicated on the outside of the return package and a copy of the RMA should be placed in the package with product.
- TOP is not responsible for damaged caused by overheating, modification, abuse, improper storage, installation, or maintenance.
- TOP is not responsible for surface level rust on stainless steel products.
- TOP is not responsible for the actions including negligence of the installer.
- Any labor involving installation or maintenance with the unit is not covered.
- This warranty excludes claims for incidental or consequential damage and indirect collateral expenses arising from product defects or warranty recovery. Product manufactured by TOP including cLCus, UL, or CSA Certified models, cannot be altered or modified in any way.
- TOP is not responsible for local codes and will not accept a return on any product that is not approved for installation. Please check with your local authorities or governing agencies for proper

approvals before purchasing.

PRODUCT RETURN POLICY

No returns on made-to-order goods.

No returns on custom features, NO EXCEPTIONS.

If a product is delivered incorrectly, it is the recipients responsibility to notify TOP within 48 hours. TOP is not responsible for incorrect or damaged packages and shipments 48 hours after they have been received.

PRODUCT TESTING PROGRAM

If you believe a unit or component you received is defective, The Outdoor Plus will gladly test any component at T.O.P's facility. TOP will cover shipping back to you.

DEFECTIVE

If an item is found to be defective it will be repaired or replaced at T.O.P's discretion. TOP will absorb all costs of outgoing freight and replacement costs if product is in warranty.

NON-DEFECTIVE

If the product is found to be non-defective it will be returned to the customer - no credit will be given.

TOP ERROR

If a return is needed due to a mistake on T.O.P's part, we will issue a RMA and Return Services Label. When products are received at TOP, credit will be issued for the products and the outgoing freight on the original invoice.

CUSTOMER ERROR

If an RMA is asked for and covers current new products in the original package, we will authorize the return. The customer is responsible for the return shipping. When products are received we will issue credit for the original customer cost less a 25% restocking charge.

Custom orders do not apply.

FREIGHT POLICY

All orders will be shipped FOB Ontario, California, with a standard shipping carrier selected by TOP unless customer specifically requests their own carrier and account. A freight quote may be requested in advance. TOP works diligently with standard carriers to achieve the best discounts available.

COLOR SWATCHES

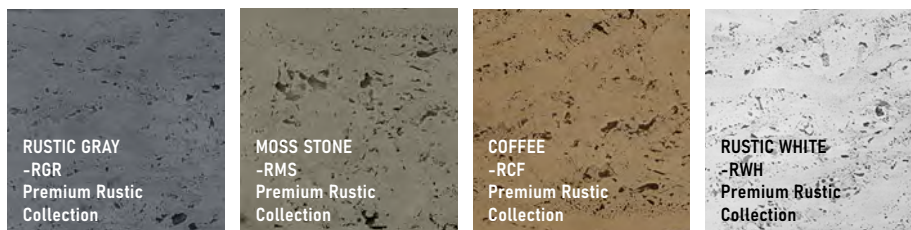
Classic GFRC Collection

T.O.P.'s classic smooth concrete finishes are some of the strongest out there. T.O.P.'s proprietary formula allows us to create an extremely durable product that also saves weight when compared to standard concrete. Unlike other concrete products on the market, T.O.P.'s products are colored all the way through. That means any surface damage that may occur is minimized whereas others only paint the surface of their white concrete leaving eyesores when chipped or scuffed. T.O.P.'s tinted sealers also help prevent water absorption and minimizes color variation so that you receive what you see in T.O.P.'s images.



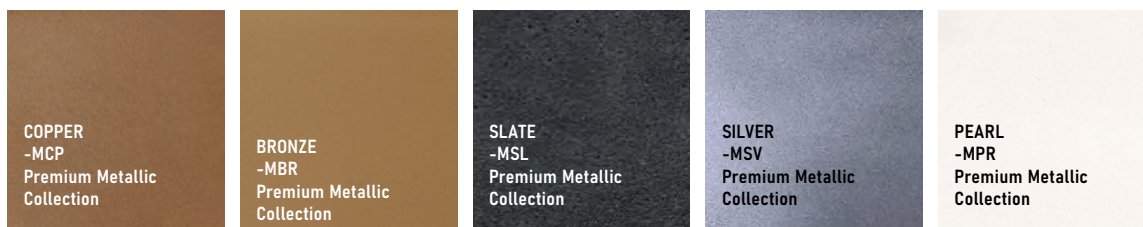
Premium Rustic Finishes

TOP's *Premium Rustic Finishes* are the latest options to T.O.P.'s line of GFRC finish options. Each product with rustic finish is unique for a more organic-stone look. The texture is only a couple millimeters deep, ensuring the same structural integrity as out smooth GFRC finishes.



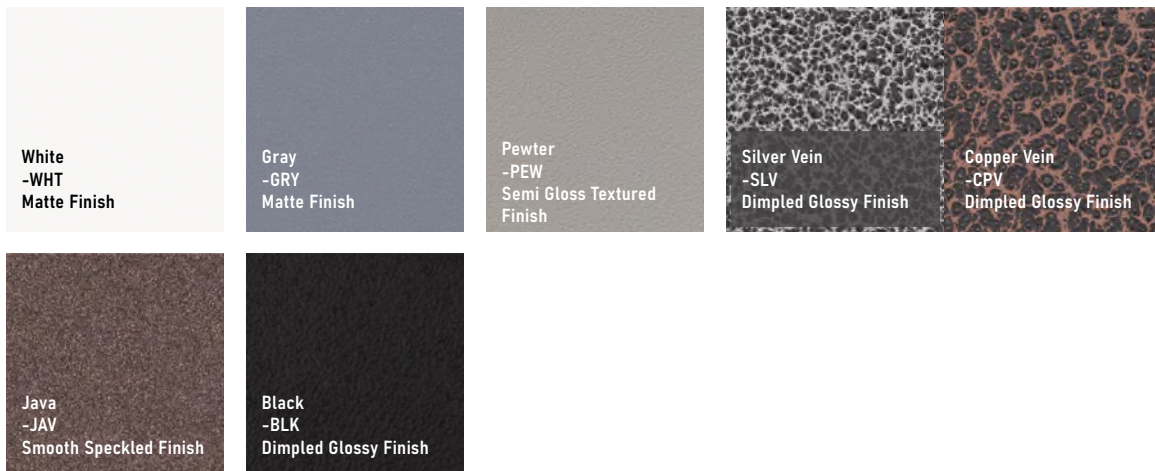
Premium Metallic Finishes

TOP's *Premium Metallic Finishes* glimmer beautifully in the light and mimics the look of an anodized finish. T.O.P.'s metallic finishes can be applied to any of T.O.P.'s GFRC concrete products. It is designed to retain its shine and protect the concrete from harsh UV rays and natural outdoor elements,



Classic Powder Coat Collection

TOP's Powder Coat finishes are UV resistant, discoloration resistant and are designed to protect against natural elements such as wind & moisture. The finishes are strong enough to resist damage from every day use, and will not chip or crack under normal use.



Premium Wood Grain Finishes

TOP's *Concrete Wood Grain Finishes* are designed to give a realistic wood look without the downsides of natural wood. Each unit is stained and finished by hand for a unique & realistic wood-grain look. Wood grain texture units retain all the structural integrity as T.O.P.'s smooth and rustic finishes to ensure the unit lasts for years to come.



STAINLESS STEEL What Is It & How To Maintain It

What "Stainless" Really Means

Stainless Steel is a slightly misleading name. A more accurate description would be "Harder to Stain" Steel. The largest component of stainless steel is steel. Steel will rust. The chromium in stainless steel when exposed to oxygen in the atmosphere forms a thin invisible layer called chromium oxide and gives stainless steel its ability to resist stains and rust. If this layer is damaged, rust is formed on the surface at the point of the damage.

The good news is, with a little cleaning and care the chromium oxide layer is self-healing.

How can I clean my product without damaging it?

Avoid damaging the chromium oxide layer by avoiding the use of cleaners that contain chlorides (fluorine, chlorine, bromine, iodine, etc.). Cleaners containing alcohol, ammonia or mineral spirits can also damage the protective layer. DO NOT use steel wool or steel brushes as particles of these carbon steel articles may stick to the surface and begin to rust.

Stainless steel and the chromium oxide layer thrive on proper cleaning. For everyday cleaning of dust, dirt and fingerprints, a mild soap/detergent (dish detergent) and warm water solution should be used. Use the solution to remove the dust, rinsing with fresh water and a clean microfiber cloth. Finish by drying completely.

Removal of oxidized stains and even "surface rust" can be done by using a paste made from baking soda and water or a cleaner that contains oxalic acid, such as Bar Keeper's Friend Soft Cleanser.



What is Corten Steel?

Corten Steel is a high strength steel that creates its own weathering resistance. It is also referred to as Weathering Steel but the name COR-TEN™ has been a trademarked name used to generalize weathering steel.

This steel alloy has been used in architecture across the globe in wet & dry environments. It eliminates the need to paint & provides great protection all on its own

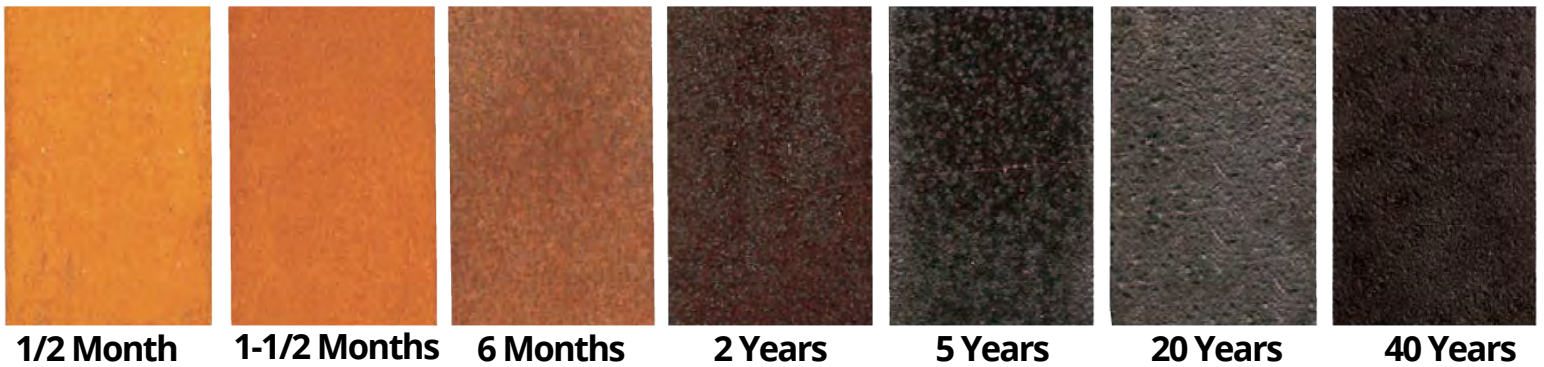
Is my product going to rust and destroy itself?

Not at all! At first glance, the rust may look alarming but rest assured your product is just fine. The weathered surface forms when the raw steel is exposed to the elements as self protection. Once it creates this surface, the material underneath is protected and structurally sound for many years to come.

COR-TEN™ has a weather resistance 4~8 times greater than that of raw mild steel. Each of T.O.P's COR-TEN™ Steel Products leave T.O.P's facilities with the light weathering process in progress. The texture of the COR-TEN™ Steel may be irregular but will even out with time and continue to darken and self regulate.

How will my product look after some time?

The image below shows the aging/patina process of COR-TEN™ Steel starting from left to right



Light weathering as it leaves T.O.P's warehouse



Medium weathering after about 6 months



Darker weathering after 1+ Years

Surface Care, Treatment & Cleaning

The COR-TEN™ Steel will have a "rust" layer of residue which can be powdery and stain your skin and clothes, we suggest not grabbing or sitting on the COR-TEN™ Steel.

If you scuff or scratch the surface, the best thing to do is leave it alone and let the corten steel heal itself. The moisture in the air will help expedite this process. Another option is to lightly rub the surface with kitchen grade scotch bright and smooth it out.

If the unit becomes wet, like after rain showers, the water can carry the corten particles down the sides, drip and stain the floor. This can be power-washed with water.

COPPER Its Natural Properties & How To Maintain It

What is Copper?

It is a shiny, red metal and is used in various applications, including T.O.P's fire pits and other furnishings. It is a precious and soft, malleable metal that can be polished and artificially patina to create a beautiful finish.

Will my copper turn completely green?

To begin, it is impossible to completely prevent moisture from making contact with the copper so you will always get some naturally occurring patina. First the overall color will darken a bit over time. Secondly, if water sits on the surface, it may penetrate the coating and as it evaporates, can leave slight green stains. T.O.P's fire pits have two coatings to help protect it against copper's naturally forming green patina. First, we apply a patina coating which is responsible for T.O.P's dark & rich finish on T.O.P's copper products. Second, we finish it off with a clear coat to seal it in and slow down moisture penetration.

To put it shortly, your fire pit will not turn entirely green, especially if you clean it well, and dry promptly.



Surface Care, Treatment & Cleaning

Avoid damaging the copper by avoiding the use of cleaners that contain chlorides, bleach, hydrogen peroxide, or any solvents. Cleaners containing alcohol, ammonia or mineral spirits can also damage the protective layer. DO NOT use steel wool or steel brushes as particles of these carbon steel articles may stick to the surface and begin to rust. A mild soap/detergent (dish detergent) and warm water solution should be used. Use the solution to remove the dust, rinsing with fresh water and a clean microfiber cloth to avoid scuffs. Finish by drying completely.

My surface looks dull and is starting to fade. What can I do?

If you feel like your copper's clear coating surface has worn away in certain high-contact spots (such as the tops that are commonly used as table tops) you can apply a coat of clear aerosol lacquer. Make sure to clean it of any dust, stains, markings, etc. before you do so as you will trap them under the lacquer if you don't.

POWDER COAT What Is It & How To Maintain It

What is Powder Coat

First off, powder coat is not paint. It is a powder that is electro-statically applied and then heated to fuse itself to the object it is applied on. This makes it more durable

How Can I Clean My Powder Coated Products?

To clean your products of normal dust and particles, you can use a mild water & detergent mix (dish soap is okay) and wipe it down with a soft cloth. Microfiber cloths will ensure you do not cause any abrasions. Be sure to dry any water droplets as they can cause water marks.

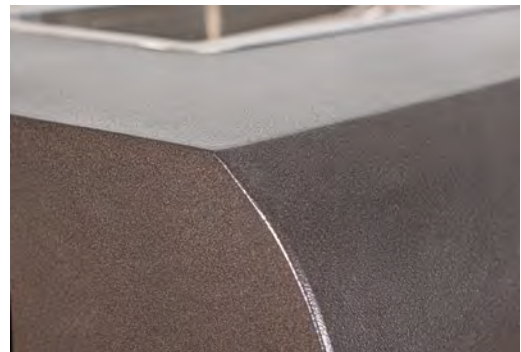
Preventing Stubborn Water Marks

Water marks and water stains form when water droplets sit and then evaporate on the surface of the product. This is because water has minerals, most commonly calcium and lime, and when the water evaporates, the calcium and lime is left behind leaving stubborn white rings. To prevent these stains from occurring, dry off any water before it evaporates.

There Are Harsh Water Marks On My Unit And Soap Wont Remove Them. What Can I Do?

You have a couple options here. One home remedy is to mix 1 parts vinegar with 1 parts warm water and spray it to the affected surfaces. After about a minute, you can then begin to wipe them off. Leave the vinegar mix on longer for more stubborn stains. Lastly, wipe off any residue and vinegar odor with a clean damp rag

Another remedy is using a cleaner called CLR (Calcium, Lime & Rust Remover). It is safe to use on powder coat finished and can be found in most grocery store stores and home improvement stores. Only apply to affected areas and do not let it sit on the surface for more than 30 seconds as it make damage the finish. Apply on a soft cloth and wipe the affected areas. Once dry, with a clean damp rag, wipe off any residue that may be on the surface.





THE OUTDOOR PLUS

USA MANUFACTURER OF FIRE & WATER FEATURES

Clearance From Combustibles.

This diagram applies to all fire pits and fire features

Flooring

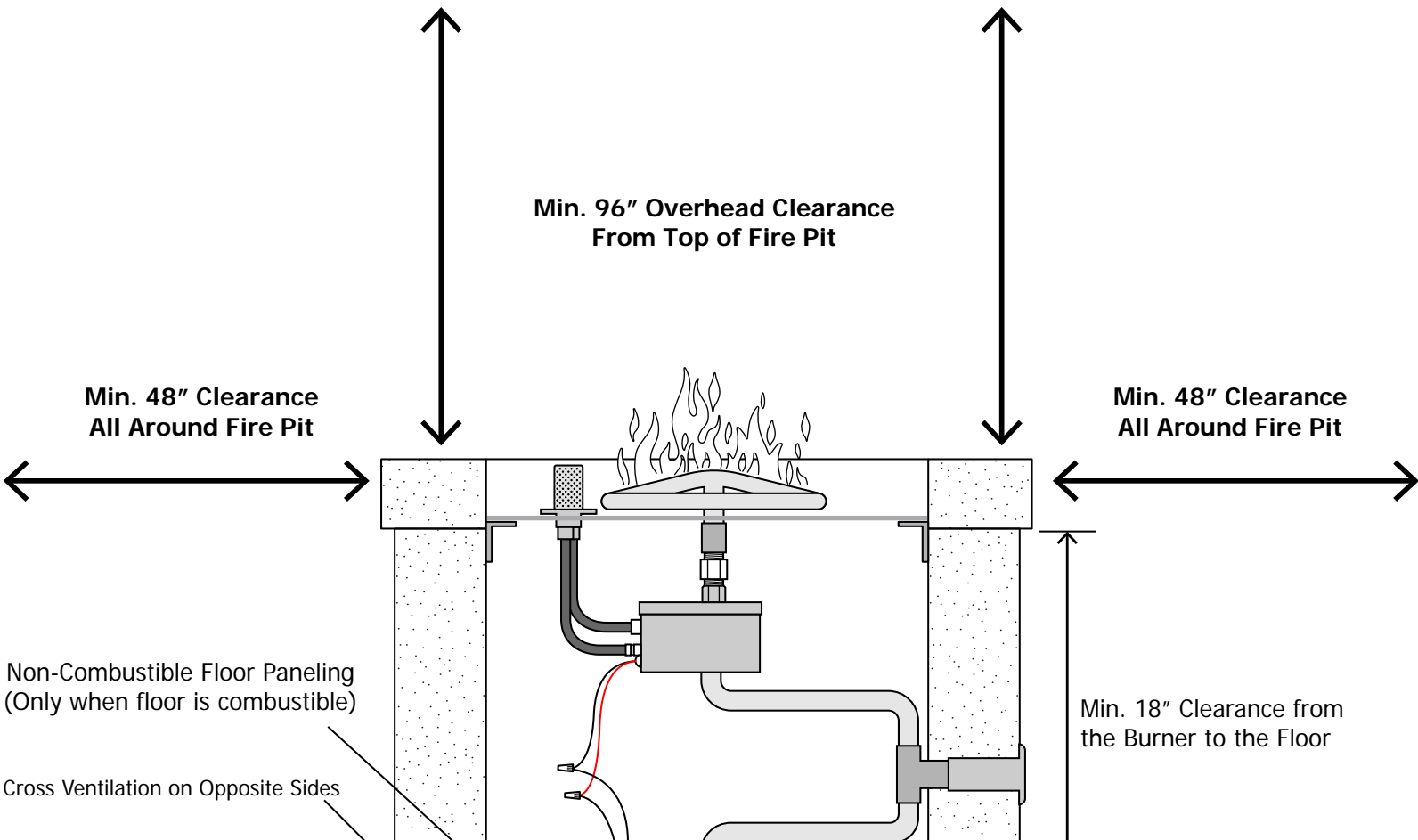
All fire pits and fire features must be installed on non-combustible flooring. If the fire feature is installed on a combustible floor, such as wood decking, a non-combustible floor paneling **MUST** be properly installed underneath.

Installation

We suggest that our products be installed by professionals that are locally licensed by the authority having jurisdiction in gas piping.

Service

We suggest that our products be serviced by a professional certified in the US by the National Fireplace Institute (NFI) as NFI Gas Specialists





**OUR MANUFACTURING
CAPABILITIES INCLUDE**

- » BOWLS
- » FIRE PITS & TABLES
- » FIRE & WATER
FOUNTAINS
- » GAS TORCHES
- » SCUPPERS
- » ACCESSORIES
- » PAN & BURNER KITS
- » BULLET BURNERS
- » IGNITION SYSTEMS

THEOUTDOORPLUS.COM
909-460-5579



@THEOUTDOORPLUS



VISIT US ONLINE!
Scan the code by opening
your phones camera and
pointing it at the QR Code