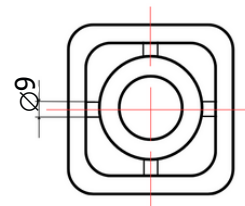
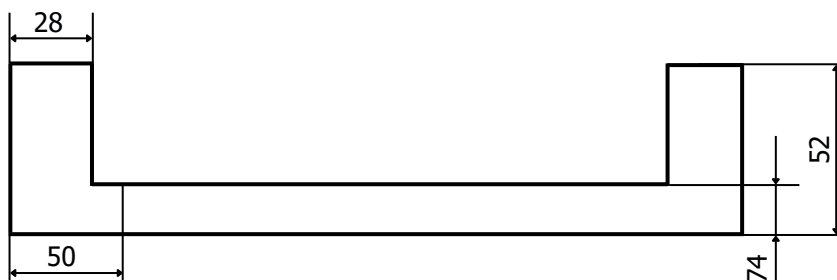
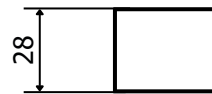
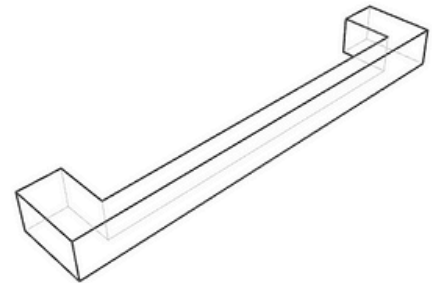
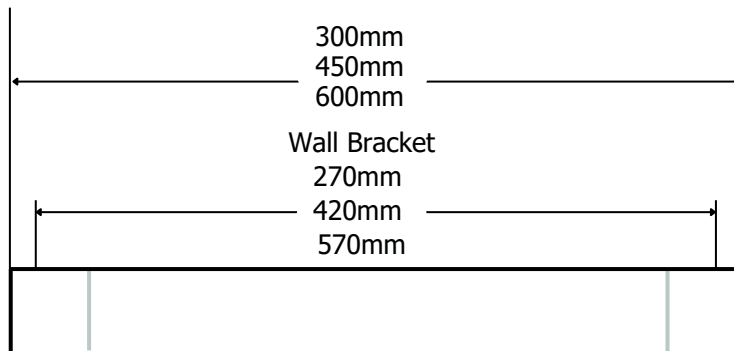


Lea Square Shape Grab Rail

A1895A - 300mm

A1895B - 450mm

A1895C - 600mm





AVAIL QUALITY DESIGNS

- Inda Slimline Grab Bars are Italian designed and are suited to modern bathroom styles
- Sizes: 300, 450, and 600mm
- Suitable for keeping stable in the shower
- The shape may not provide a suitable grip for assisting with sitting standing
- 150kg capacity for 300mm rails
- 120kg capacity for larger sizes
- Screws and wall plugs included

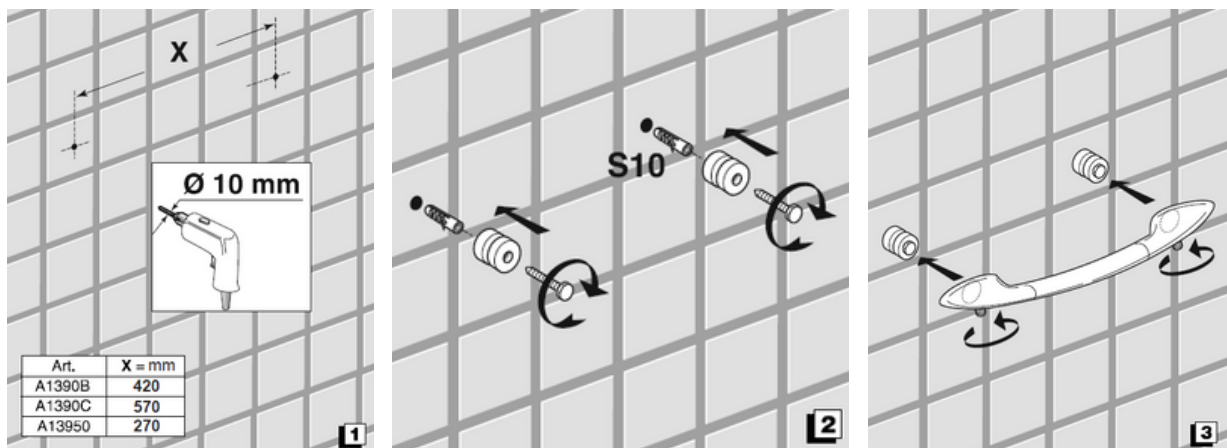


PARTS LIST:

Art.		
A1390B A1390C A13950	Ø 7 x 60 TE	S10

LEA SQUARE SHAPE GRAB RAIL INSTALLATION INSTRUCTIONS

1. Be sure that the wall where the brackets have to be mounted grants suitable compactness and resistance characteristics.
2. The best results can be obtained by mounting on walls in beton or bricks, plastered and in case lined with files.
3. If the wall is not built in beton or bricks, consult a specialist before installation.
4. Drill with a bit as shown in the pictures and make sure they are free of dust before inserting screw anchors.
5. Tighten Screws and fixing grub screw well.



CLEANING

- Quality, technological processes and materials are the features that determine the high standards of our accessories. However, to avoid surface alterations, it is necessary to follow a few guidelines.
- Clean all finishes exclusively with soap and water, and dry with a soft cloth. Do not use coarse cloths, abrasive products, acids, ammonia products, caustic substances, bleach or solvents. If the wall is not built in beton or bricks, consult a specialist before installation.
- In case of contact with these substances, rinse surfaces immediately and wipe dry.
- Remember that even fumes can damage metal.
- Wash accessories next to the toilet bowl at regular intervals to avoid corrosion.