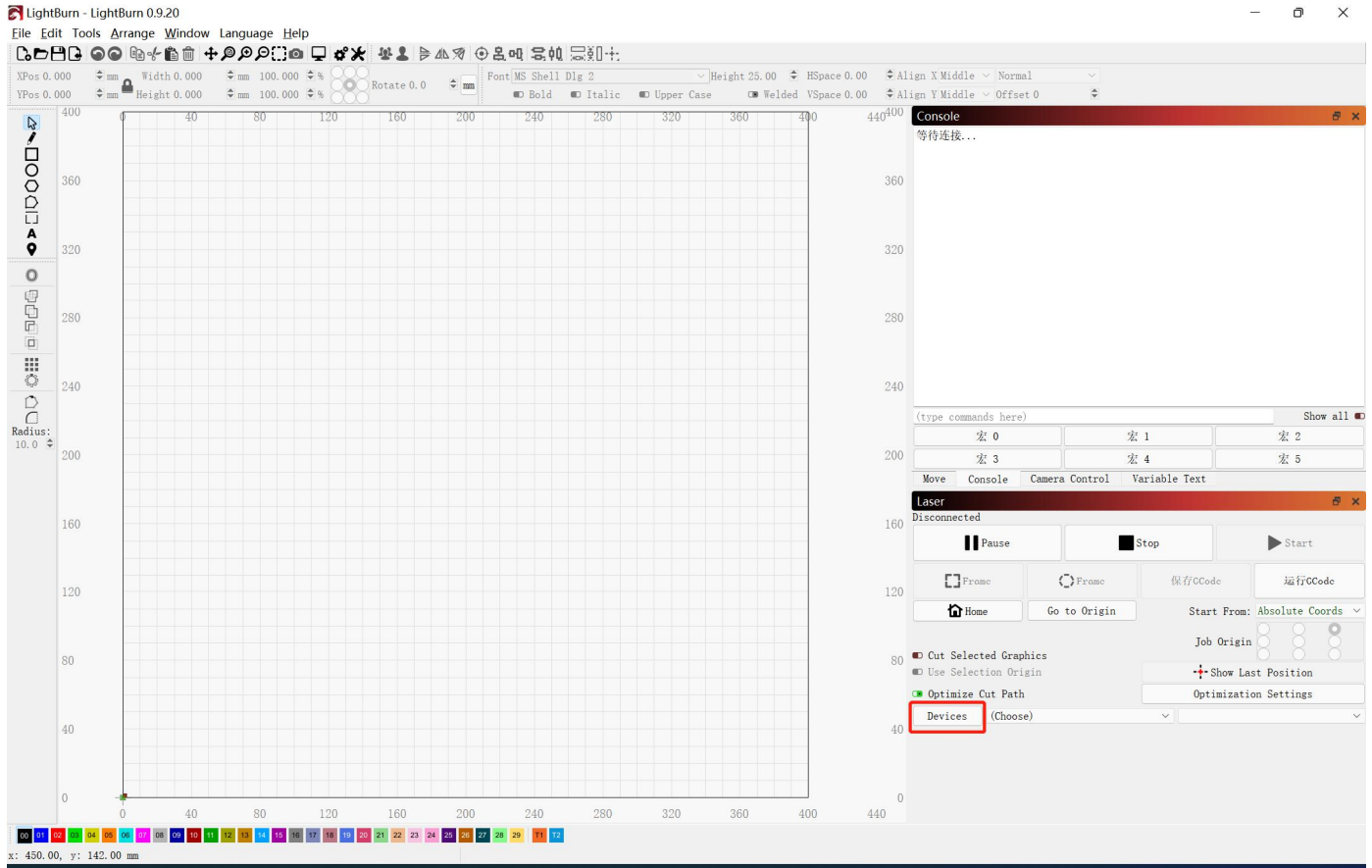
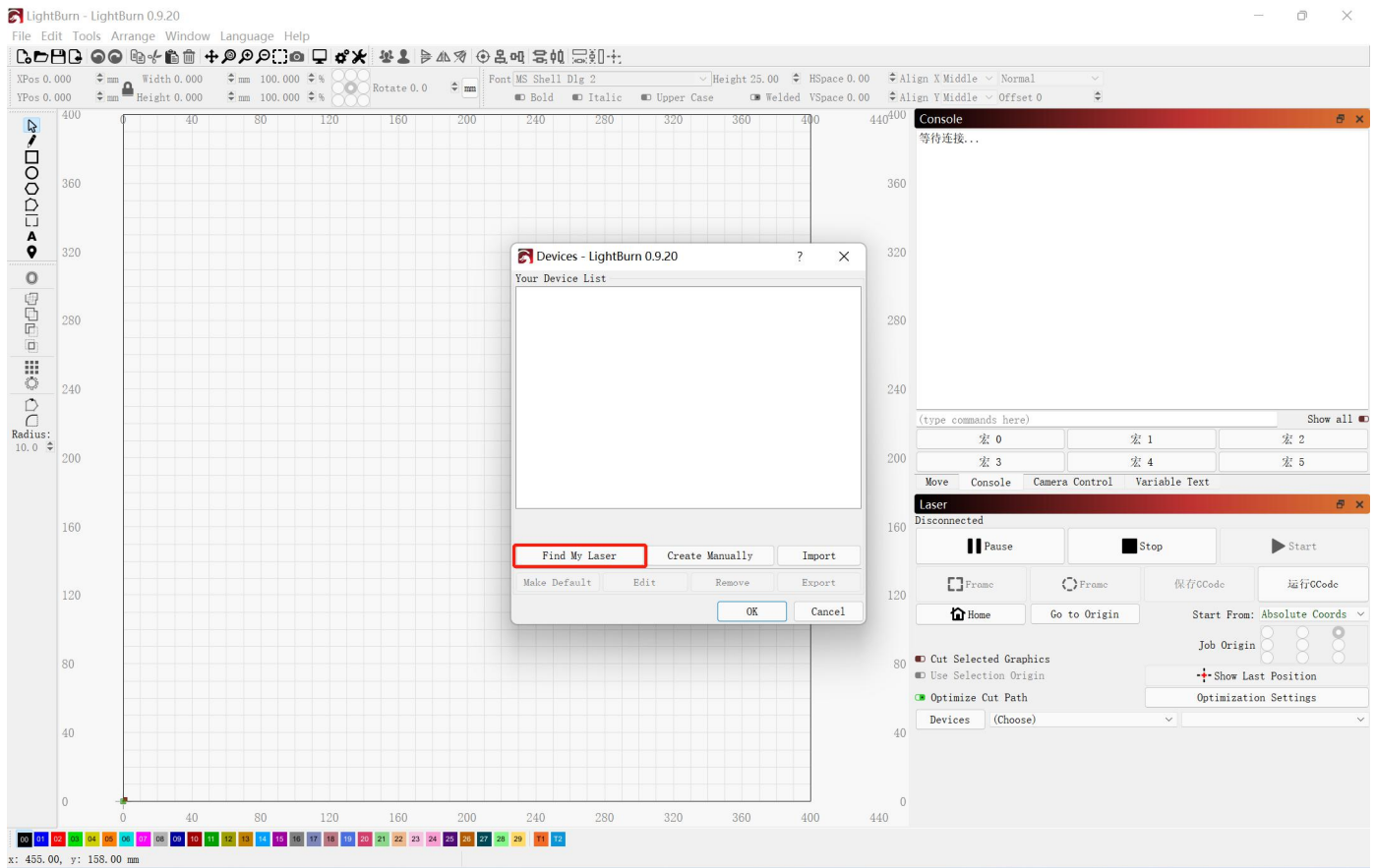


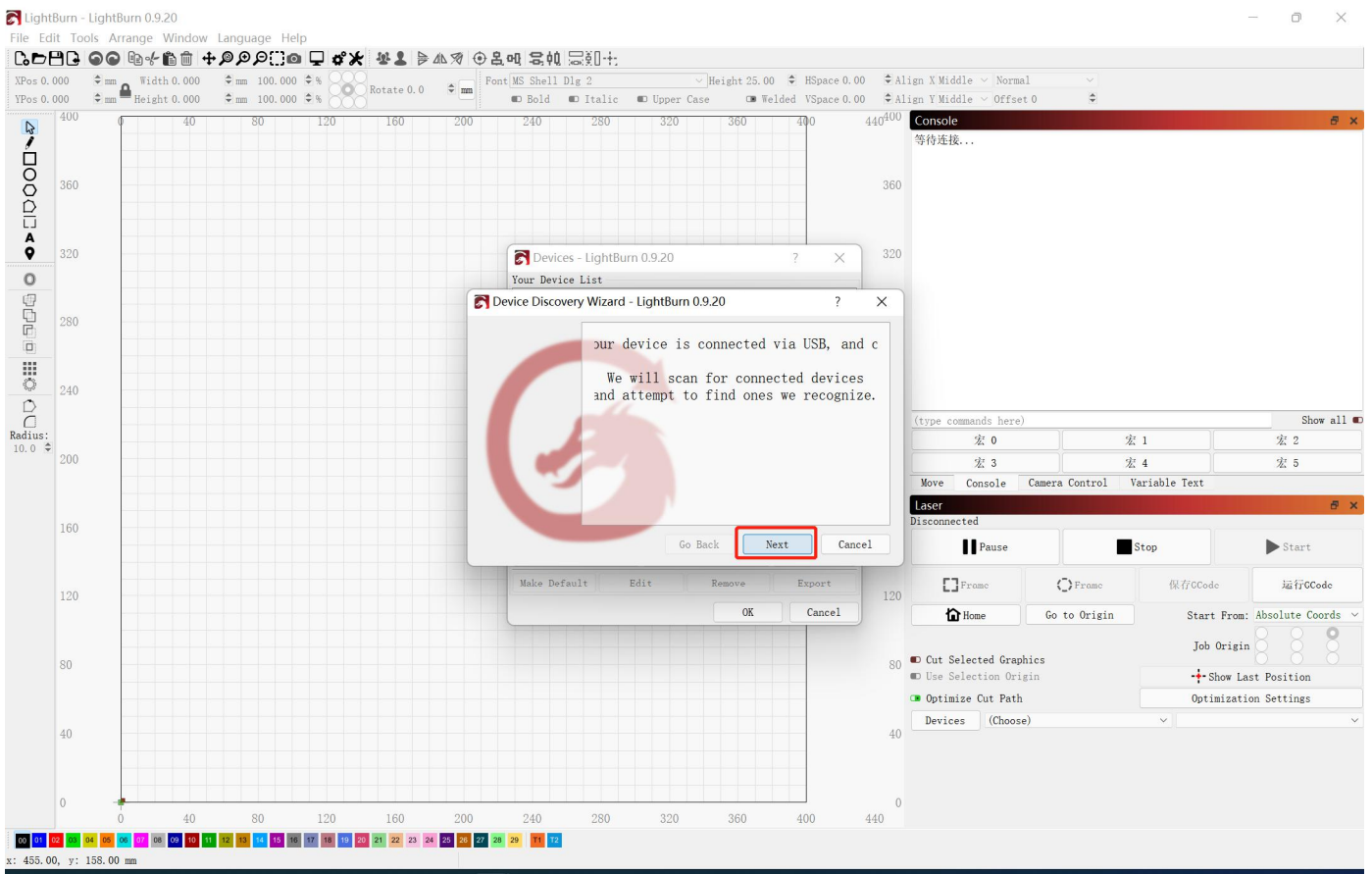
LightBurn Adds Laser Means

Step 1: Click Devices

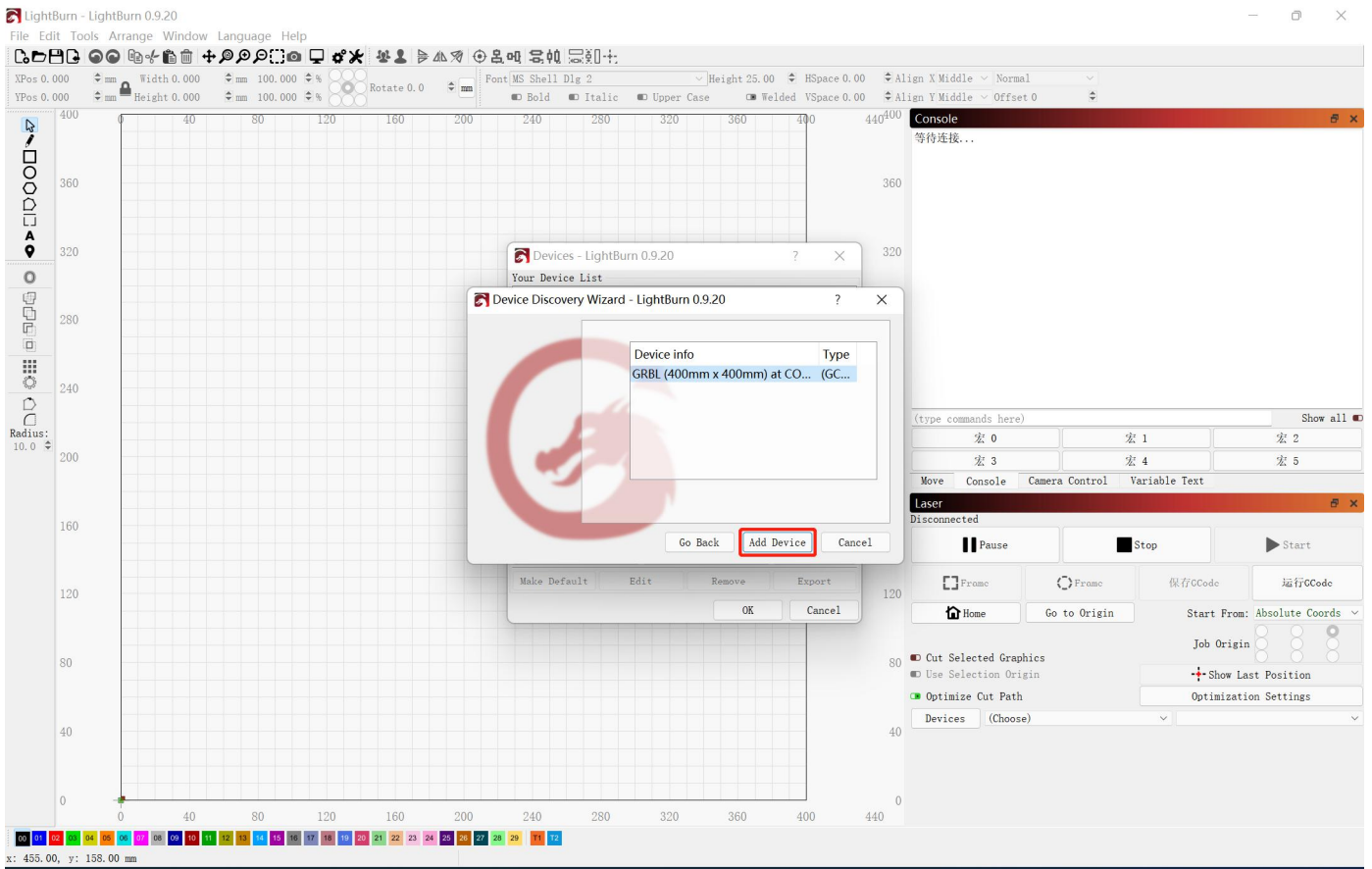


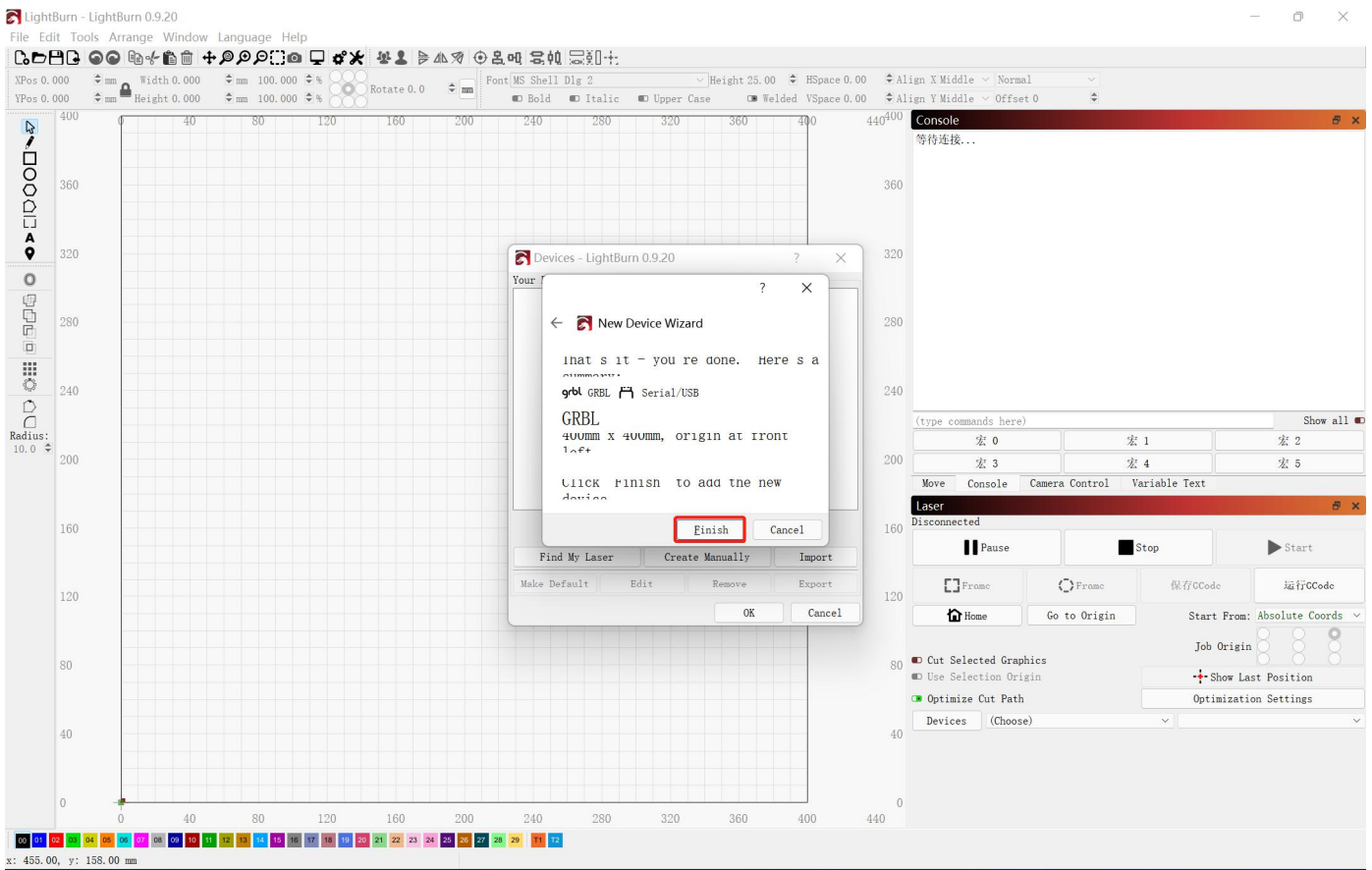
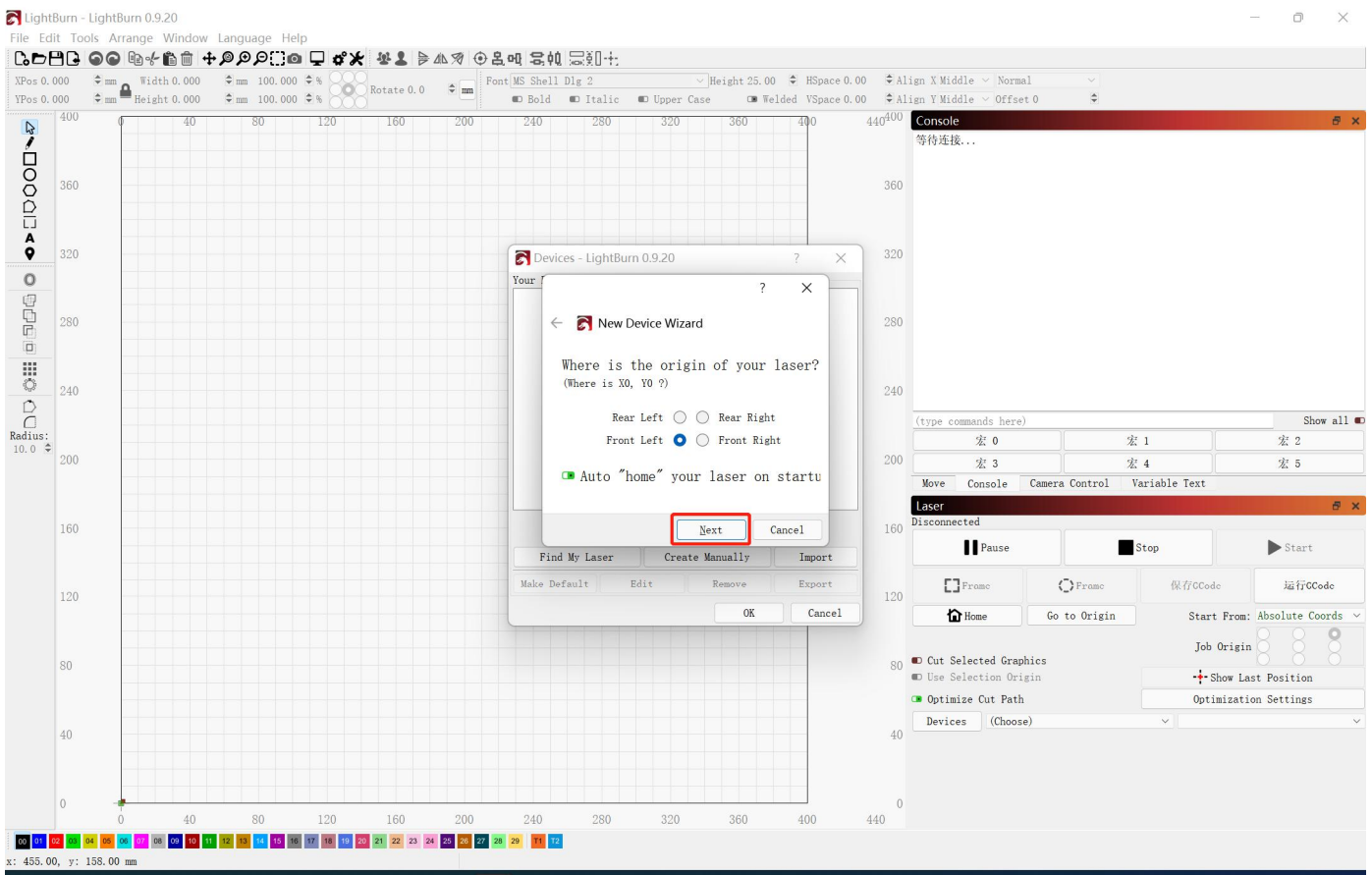
Step 2: Find My Laser, and select Next



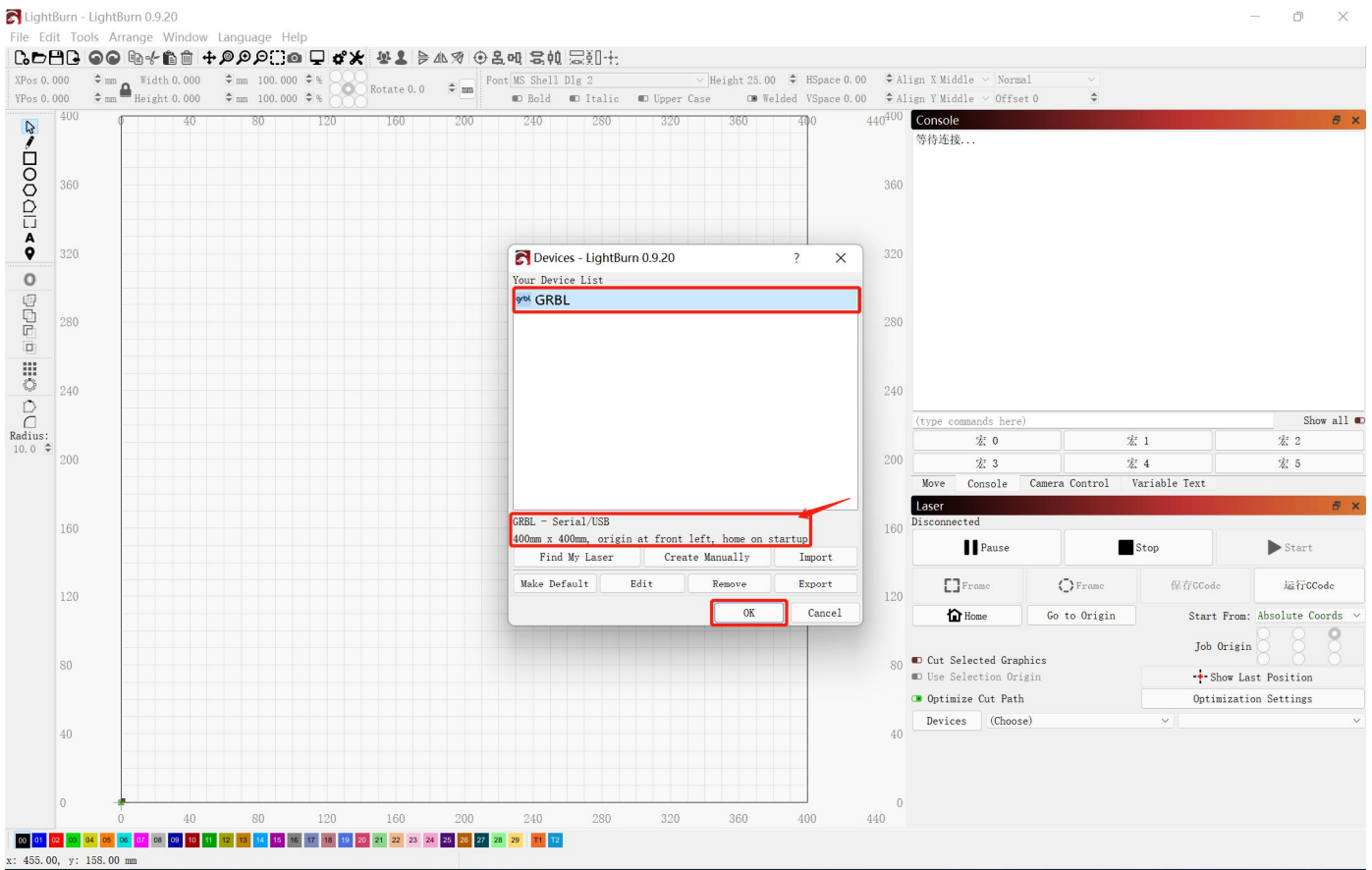
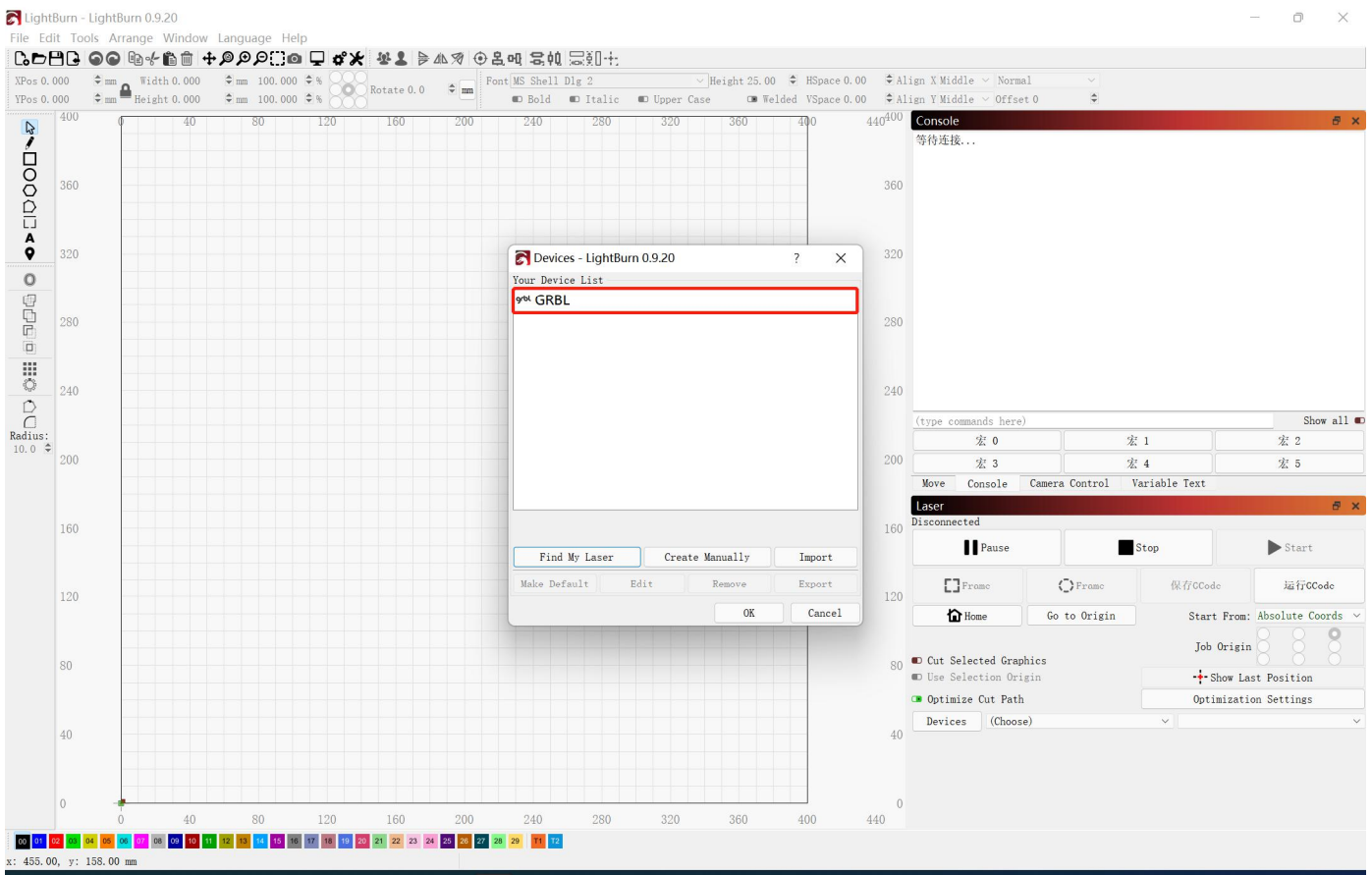


Step 3: Found My Laser and Selected Add Device, and Select Next, and Finish





Step 4: Select "GRBL", and "GRBL-Serial/USB..." appears in the dialog box and select OK



Step 5: Select the port of the link, and "console" displays "Homing OK" to indicate that the link is successful, and then you can have fun

