



RESSENCE

TYPE 3

v 3.0

Owner's Manual

Dear Owner,

I would like to thank for your support and your trust by becoming the owner of a RESSENCE TYPE 3.

You are wearing a totally unconventional watch created from the mindset of an industrial designer. The originality lies in the point of view. A RESSENCE watch has its roots in your brain. The concept is based on a holistic approach in which the user experience plays a central role.

This watch is truly different from any other watch. I would like to invite you to read the owner's manual for a good understanding of how to set, maintain and service it. This watch is temperature sensitive.

Your feedback is extremely valuable. I therefore invite you to share your individual experience by emailing to: [type3@ressence.be](mailto:type3@ressence.be)

I hope that every time you wear your watch, you will enjoy a sensory blend of pleasure and harmony.

Please handle your watch with the care it merits.  
Again, thank you for your confidence.

Benoît Mintiens  
( founder & creator )



# Functional Parameters

The watch is monitored at 0h and after 24h of running in a fixed position. The watch is placed in a robotised monitoring device that „listens“ to the watch pulsing in 6 different positions, namely dial up, dial down, crown up, crown down, dial front-facing, dial back-facing. This process measures the amplitude of the movement in degrees. The internal friction of the movement components varies according to their orientation relative to the direction of gravity. The smaller and more homogeneous the variation between the 6 positions, the more accurate the time keeping.

Please keep the ticket(s) at all times and send them together with the watch for servicing.



# Technical parameters

- FUNCTIONS:** Date, Days, Hours, Minutes, Seconds ( 360" )
- ARCHITECTURE:** Sandwich construction with Titanium membrane between movement and fluid-filled indication module.
- SYSTEM:** Information transmitted from movement to indications by micro-magnets .
- MODULE:** Patented system invented and developed by Ressence.  
Independent convex dial (radius: 125mm) comprising 28 gears and 57 jewels.  
Made in grade 5 Titanium integrating three eccentric biaxial satellites inclined at 3° and 4,75° with a date ring around the circumference.  
The module and indications are completely immersed in fluid.  
Indications engraved and filled with Super-LumiNova, glowing in the dark.
- DIMENSIONS:** 44mm x 15mm.
- CRYSTALS:** Domed sapphire crystals top and bottom with anti-reflective coating.
- MOVEMENT:** Automatic winding movement, 25 jewels.  
Power reserve 36 hours,  
Balance frequency 28.800 A/h.  
Visible ring-shaped winding rotor.
- SETUP:** Crownless setup system with gravity clutch in rose gold.
- COMPONENTS:** + 400 components.
- WEIGHT:** 75 grams.

This watch is water resistant but not waterproof



# The RESSENCE Dial



## Dial

The watch you now own has a unique time display mechanism. Unlike traditional watches, the time representation is generated by a set of disks and rings. The so-called time module (or module) is an independent mechanical unit that generates all the functions independently completely immersed in oil. From the movement are taken the date and the minutes. The other functions as well as the orbiting movement of the rings are generated by the module.



# Operating Instructions

## Set-up RESSENCE TYPE 3

The TYPE 3 has a unique set-up mechanism. Unlike traditional watches, TYPE 3 has no crown for winding or setting the watch. Instead the back case takes over the crown functions. The different actions normally carried out with a crown are replaced by turning the back of the watch.

Manual Winding

Date Setting

Time Setting

Day Setting



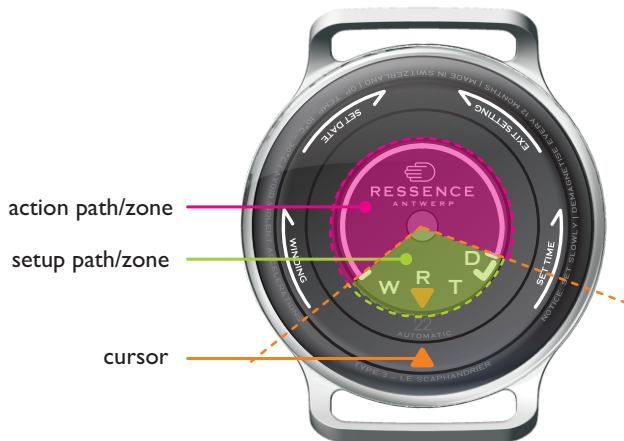
# Operating Instructions



- R** Normal Running position
- W** Winding direction
- T** Time setting direction
- D** Date setting



# Operating Instructions



Turn the back  
clockwise



Normal  
running position



Turn the back  
counter clockwise





# Manual Winding



1.



2.

1. Turn the back case clockwise and bring the cursor into the blue area.

then

2. SLOWLY rotate the cursor back and forth within the blue area. Do this 3 times to activate the watch. The automatic winding will take over from here.

then

3. Turn the back case CCW\* to the normal running position. (Two orange cursors face each other)

\* counter clockwise



# Date Setting



1.



2.

1. Turn the back clockwise over  $270^\circ$  to the green dotted line. The back will block at this point. Date setting is now activated.

then

2. Turn CCW\* until about 9h (West ).

then -

\* counter clockwise



# Date Setting



3. Hold the watch dial up to see the date indicator.  
Turn the back CCW\* until the requested date is set.  
Should the back block > go back to step 2.

then

4. Turn the back case CCW\* to the normal running position.  
( Two orange cursors face eachother )

\* counter clockwise



# Time Setting



1.



2.

1. Turn the back CCW\* starting from the normal running position and bring the cursor at about 12h ( North ).

Advanced: If a lot of hours need to be caught up, set the cursor at 3h ( East )

If a lot of hours need to be recovered, set the cursor at 9h ( West )

then

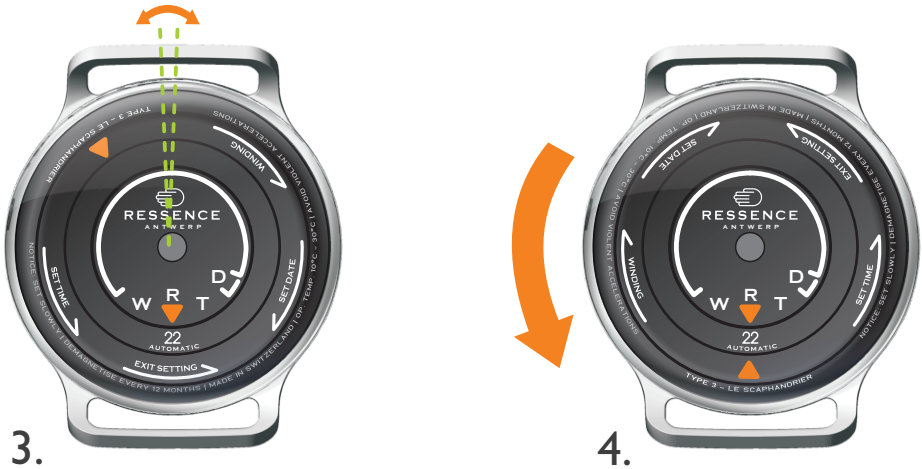
2. Turn the watch around Dial UP and set the time by turning the back case in both directions to the required position.

then -

\* counter clockwise



# Time Setting



3. Turn the watch dial down, back case up.  
„Slightly Shake\*\*“ the back case over 2° to unlock the gears.

then

4. Turn the back case CCW\* to the normal running position.  
( Two orange cursors face eachother )

\*\* : shake the back case : turn the back case back and forth over an angle of about 2°.

This small angle will avoid changing the time.

It will allow the gears that are under tension to unlock by gravity.

Turning the back case CCW\* should feel free.

\* counter clockwise



# Day Setting



1.



2. & 3.

1. Follow instruction for Time Setting and bring the time to 23h45.  
Tip: try to have the back case cursor between 10h30 and 1h30 for easy day setting.

then

2. Set the time ( backwards ) to 23h30.

then

3. Move the minutes hand forward to 00h30. The day indicator ( orange hand ) will jump one day.

Repeat this back and forth oscillation for each extra day.



# Important Notice

The TYPE 3 is Oil filled.

Like all liquids, oil expands when heated and contracts when chilled.

TYPE 3 has been calibrated to function between 10°C ( 50°F ) and 35°C ( 95°F ).

This corresponds to a normal wearing temperature of 20°C ( 68°F ) with skin contact.

A Titanium membrane compensates for normal volume changes due to temperature.

If the watch is exposed to temperatures below 10°C ( 40°F ) this could cause a bubble of air to appear. It is therefore **VERY IMPORTANT** to protect the watch from the cold.

If the watch is exposed to temperatures above 35°C ( 95°F ) internal pressure could disconnect the glass from the case resulting in an oil leak. It is **VERY IMPORTANT** not to expose the watch to high temperatures. For example do not leave the watch on a dashboard or unventilated under direct sun light. If the watch is black, it is even more sensitive to heat build-up inside.

RESSENCE bvba declines all responsibility and cannot be liable for any consequence related to an oil leak whatever the cause. The consequences related to the exposure to temperatures below and above as indicated on the watch are not considered manufacturing defects.

The oil used in TYPE 3 is a Petroleum-based lubricant ( highly flammable )

Do not swallow or inhale vapours.

In the event of skin contact, wash the skin with soap and rinse with water.

In the event of eye contact, rinse abundantly with water and consult a specialist.



**THE WATCH MUST BE PROTECTED FROM SHOCKS**



# Maintenance & Service

## Servicing

RESSENCE advises you to have your watch checked every year by an appointed aftersales agent to guarantee its keeping perfect time. During this annual routine check the movement needs to demagnetised.

---

This page is reserved for servicing information.  
Please keep the log book of your watch up-to-date.





# Certificate of Guarantee

Your RESSENCE watch is insured under a limited guarantee against manufacturing defects for two years from the date of purchase indicated on page 2 of the Owner's Manual. Only your retailer and the official distributor for your country are authorised to accept your watch for service. Please consult the list of authorised aftersales support. Your watch has been sealed. If at the time of servicing the seals are found to be broken, the guarantee is automatically void. For further information, please contact RESSENCE bvba by email.

[guarantee@ressence.be](mailto:guarantee@ressence.be)

Your RESSENCE watch comes with a „bubble certificate“. The bubble code found on the guarantee card is based on natural chaos and is unreproducible. To check the authenticity of your watch, you need to connect to the internet.

[www.prooftag.com](http://www.prooftag.com)

Key in J10N..... followed by the registration number printed on your guarantee card. Click on „Search“ A page containing authenticity information will appear together with the scanned bubble code. You now need to compare the bubble code on your card with the scanned image on the screen to authenticate your watch.

**A bubble of air in the oil-filled dial is not considered as a manufacturing defect. Also refer to the page „important notice“.**





**WWW.RESENCE.EU**

RESENCE bvba, Meirbrug 1, 2000 Antwerp, Belgium

Resence reserves the right to modify models or technical features at any time and without prior warning. All rights reserved.  
All images are computer generated based on the real 3D model. Colours, finishes and other aspects may differ from reality due to technical interface aspects.