

PBS Vanities

PBS NZ

Install guide



PBS NZ
BUILDING SUPPLIES

PBS Vanities

INSTALLATION GUIDE

This site guide is provided for the installation of PBS Vanities.

Instructions for Installation of PBS Vanities

- Please read these instructions carefully to familiarize yourself with the required tools, materials, and installation sequences. Follow the sections that pertain to your particular installation. This will help you avoid costly mistakes. In addition to proper installation, read all operating and safety instructions.
- All information in these instructions is based upon the latest product information available at the time of publication. PBS NZ reserves the right to make changes in product characteristics, packaging, or availability at any time without notice.
- These instructions contain important care and cleaning, please leave instructions for the consumer.



PBS NZ
W: www.pbsnz.co.nz
E: orders@pbsnz.co.nz
23 Carr Street, Tuakau, 2121

Safety Warnings

PBS NZ products are precision-engineered and should give continued superior and safe performance, provided:

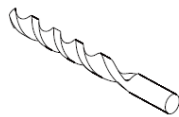
- They are installed, commissioned, operated, and maintained in accordance with the recommendations given in this Manual.
- Periodic attention given, as necessary, to maintain the product in good functional order. Carefully inspect the new fixture for any signs of damage. When installing PBS NZ products, manufacturers guidelines for power tool safety should be followed.

Tools List

Tools and materials required:

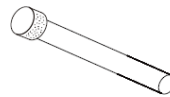


Drill



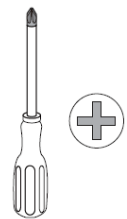
Φ8

Drill bit



Φ8

Glass drill



Screwdriver



Spirit level



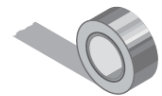
Ruler



Pencil



Silicon sealant



Masking tape



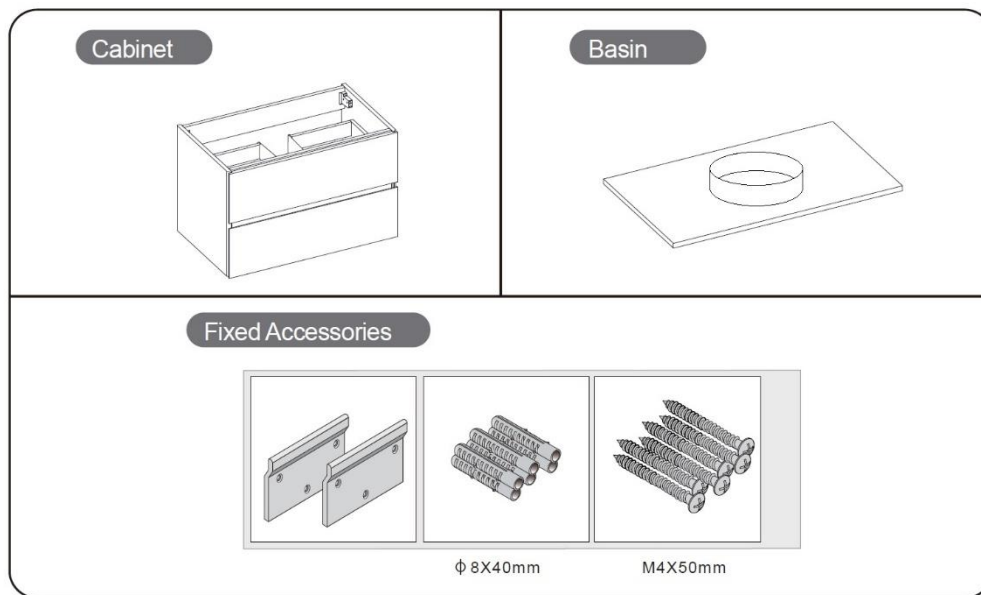
PBS NZ
BUILDING SUPPLIES

PBS NZ
W: www.pbsnz.co.nz
E: orders@pbsnz.co.nz
23 Carr Street, Tuakau, 2121

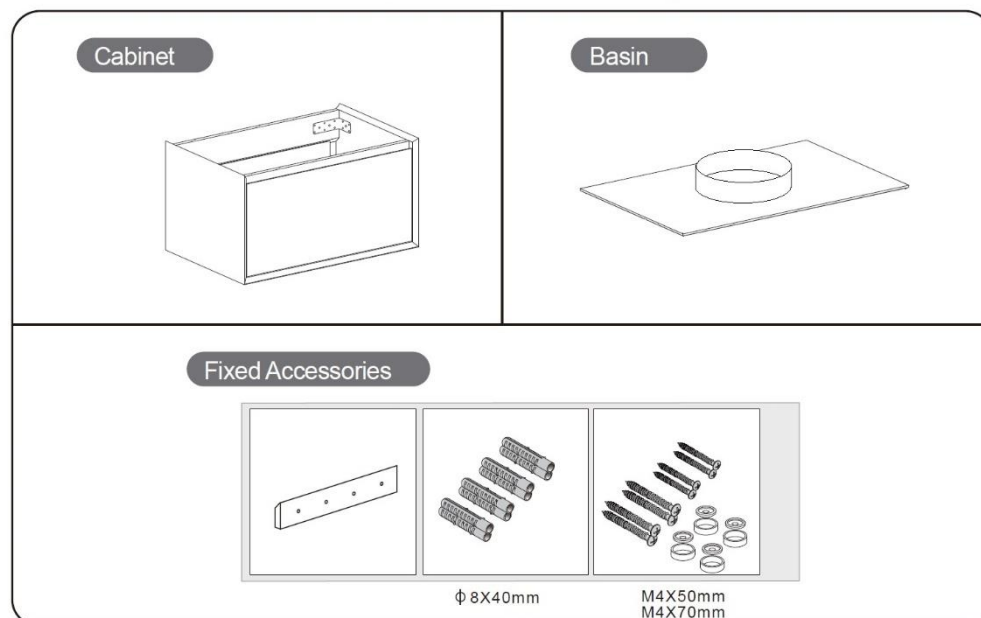
Parts List

After unpacking, please confirm the parts and quantity according to the following. (Please check the standard accessories and choose one of the following installation methods according to the accessories.)

H90 (hanger)



H45 (oblique cut hanger)

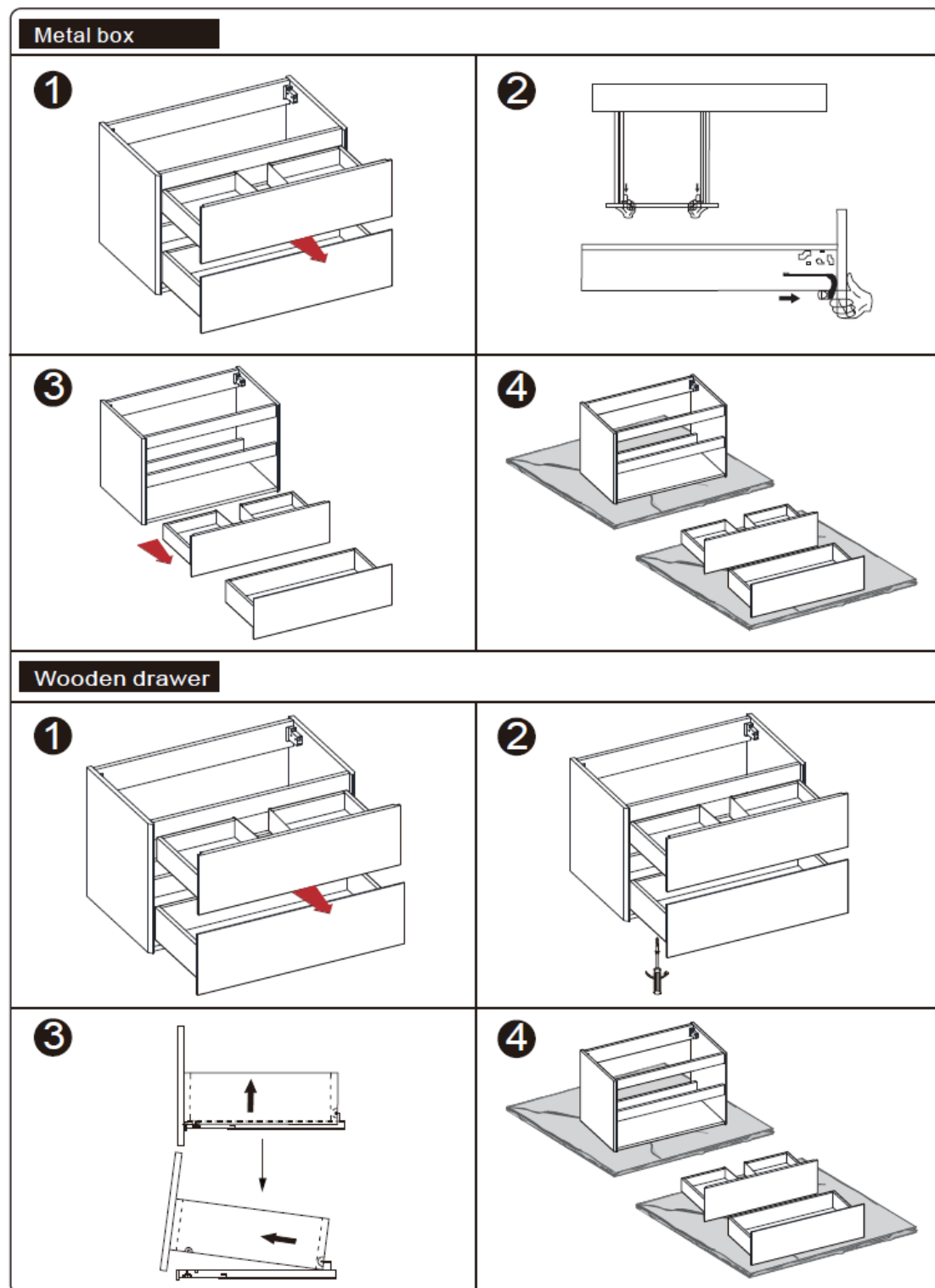


PBS NZ
BUILDING SUPPLIES

PBS NZ
W: www.pbsnz.co.nz
E: orders@pbsnz.co.nz
23 Carr Street, Tuakau, 2121

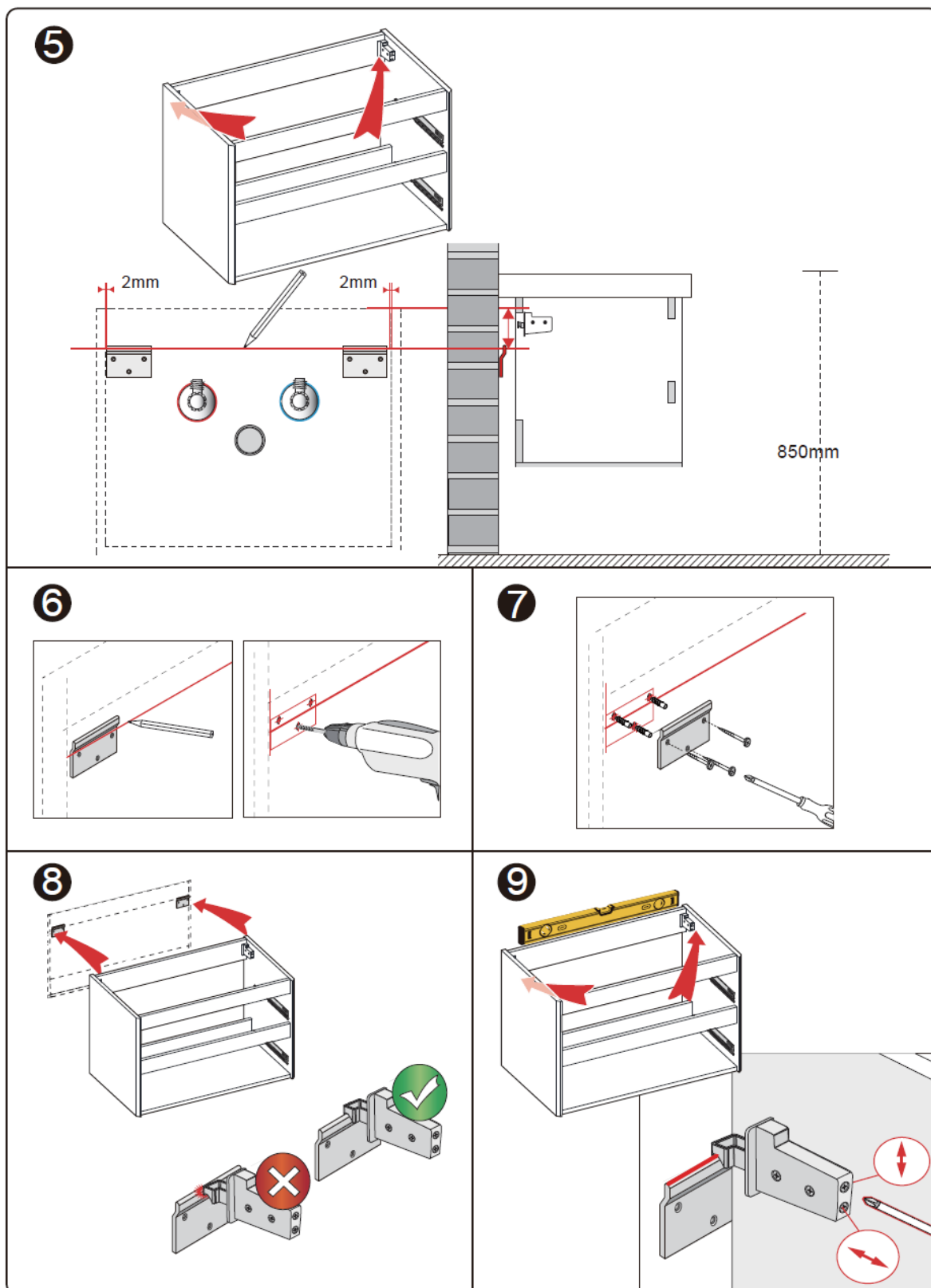
Installation Instructions

H90 (hanger)



PBS NZ
BUILDING SUPPLIES

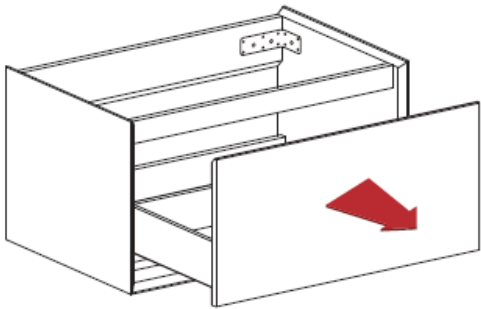
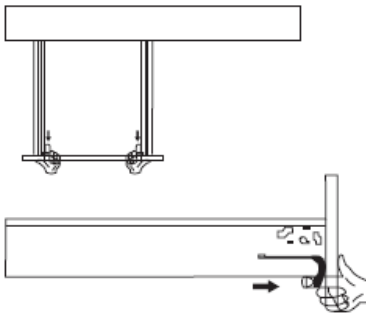
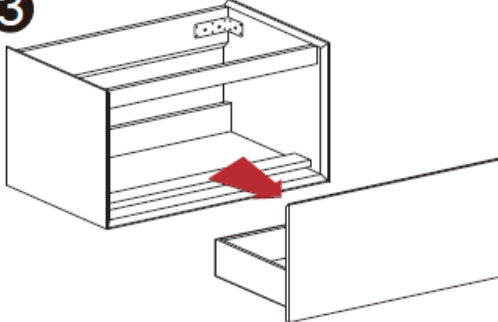
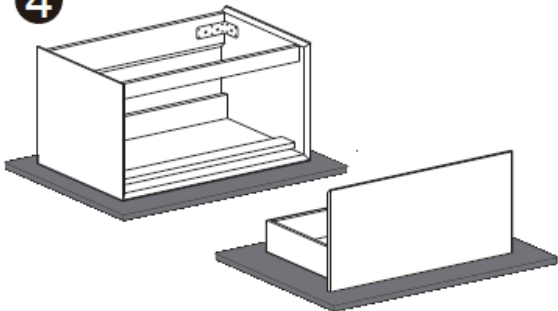
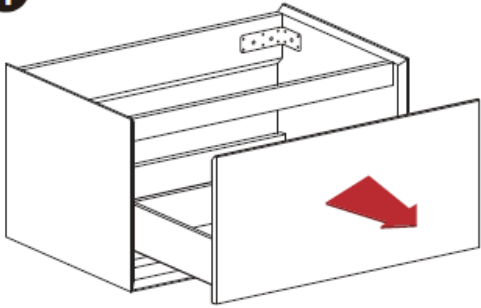
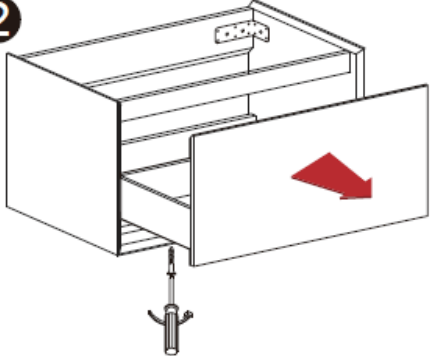
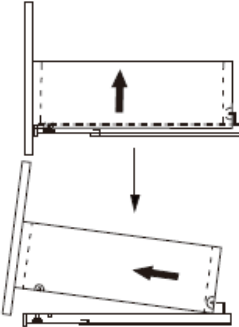
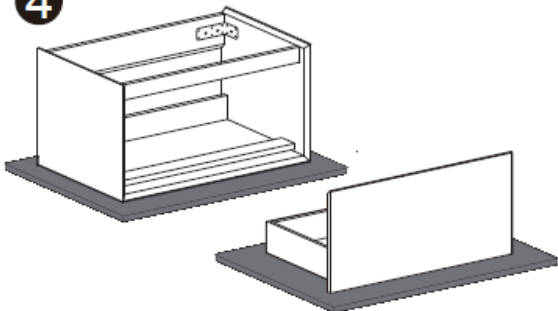
PBS NZ
W: www.pbsnz.co.nz
E: orders@pbsnz.co.nz
23 Carr Street, Tuakau, 2121



PBS NZ
BUILDING SUPPLIES

PBS NZ
W: www.pbsnz.co.nz
E: orders@pbsnz.co.nz
23 Carr Street, Tuakau, 2121

H45 (oblique cut hanger)

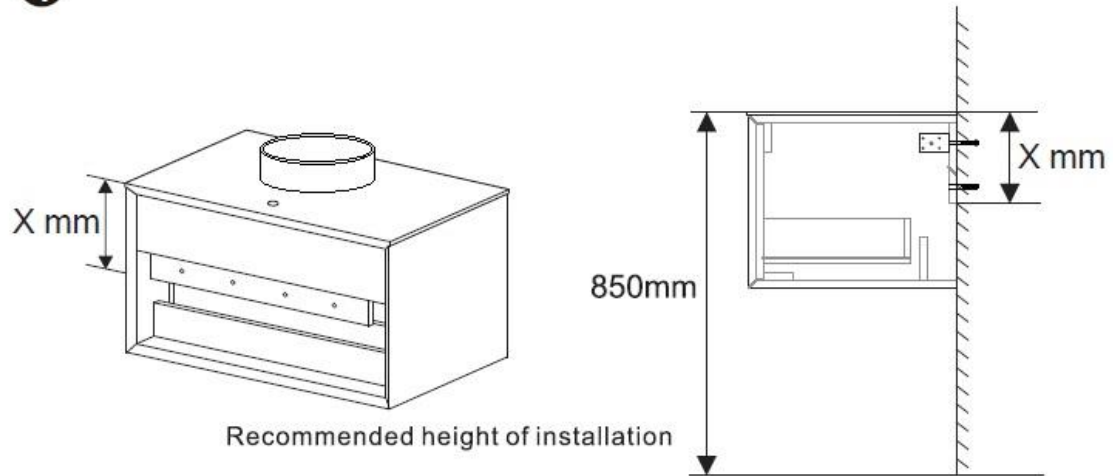
Metal box	
1 	2 
3 	4 
Wooden drawer	
1 	2 
3 	4 



PBS NZ
BUILDING SUPPLIES

PBS NZ
W: www.pbsnz.co.nz
E: orders@pbsnz.co.nz
23 Carr Street, Tuakau, 2121

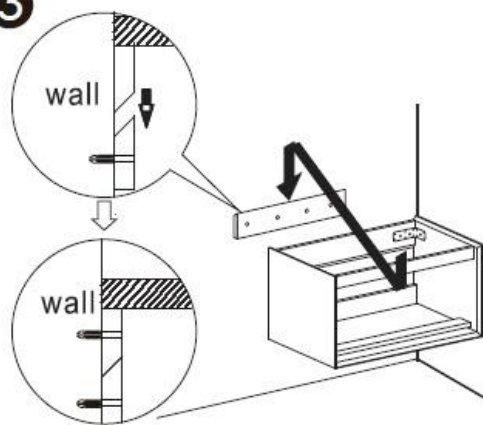
1



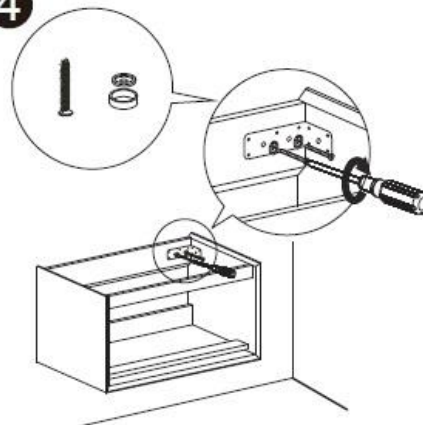
2



3



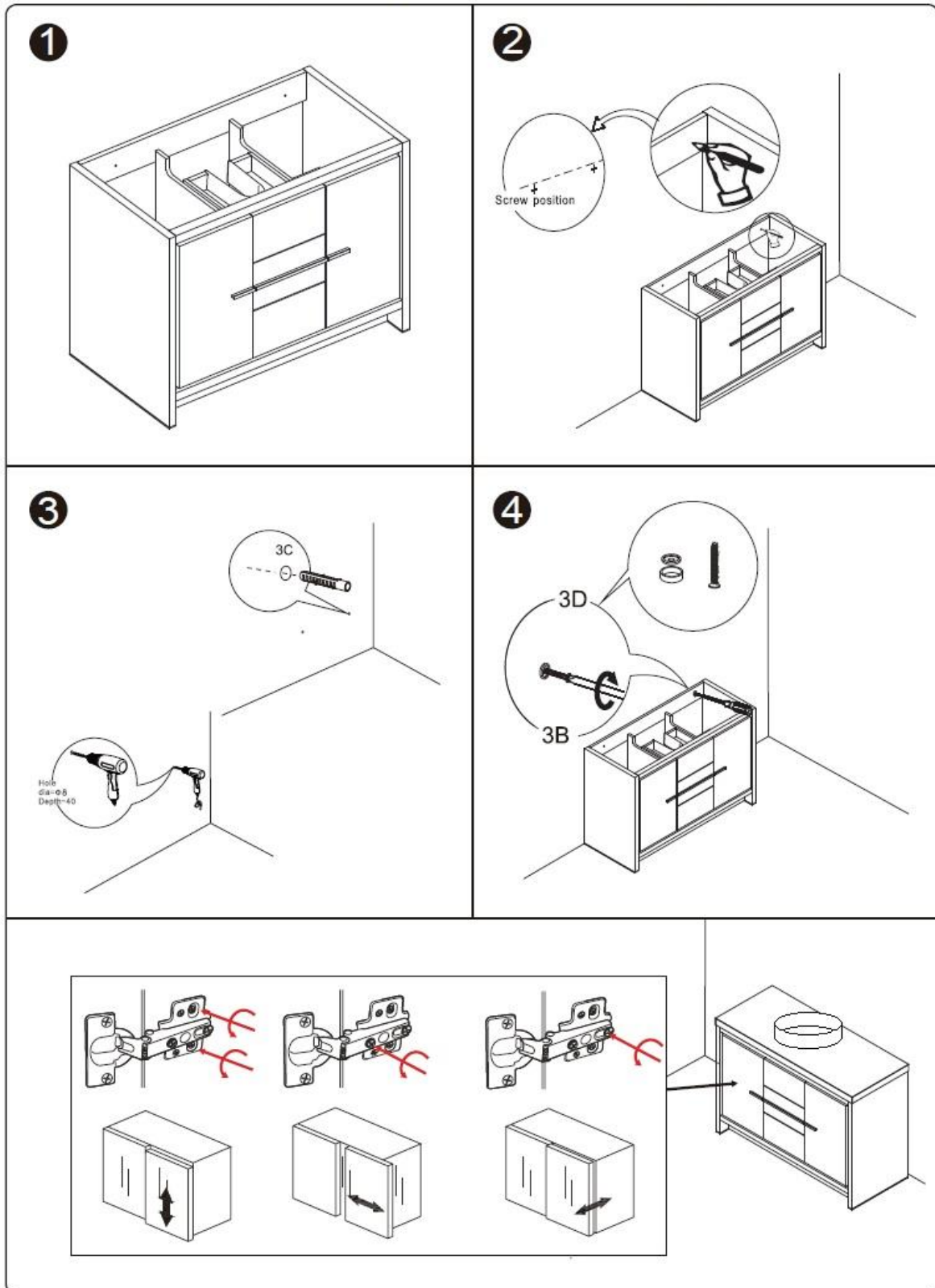
4



PBS NZ
BUILDING SUPPLIES

PBS NZ
W: www.pbsnz.co.nz
E: orders@pbsnz.co.nz
23 Carr Street, Tuakau, 2121

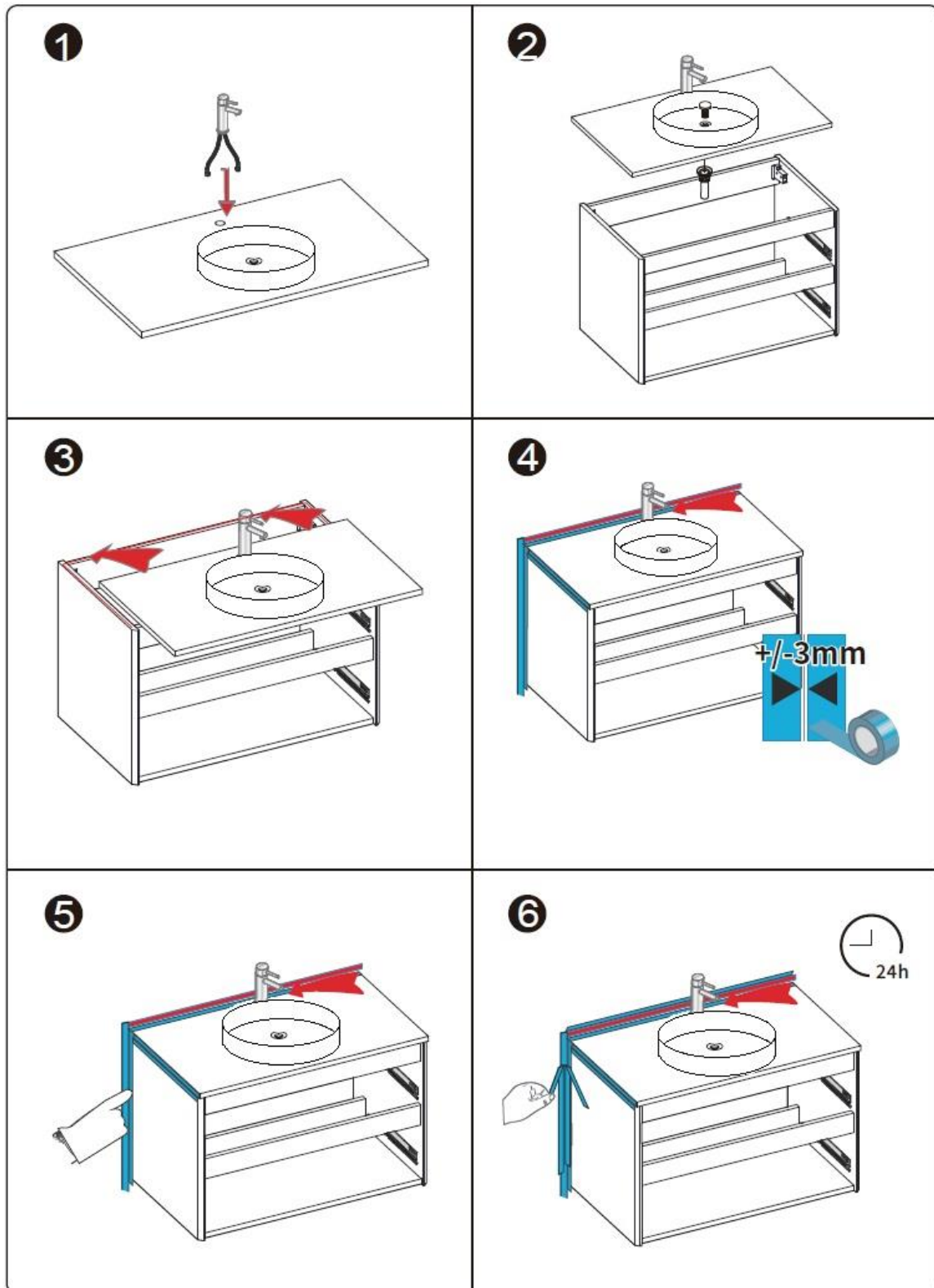
H00 (screws go into the wall directly)



PBS NZ
BUILDING SUPPLIES

PBS NZ
W: www.pbsnz.co.nz
E: orders@pbsnz.co.nz
23 Carr Street, Tuakau, 2121

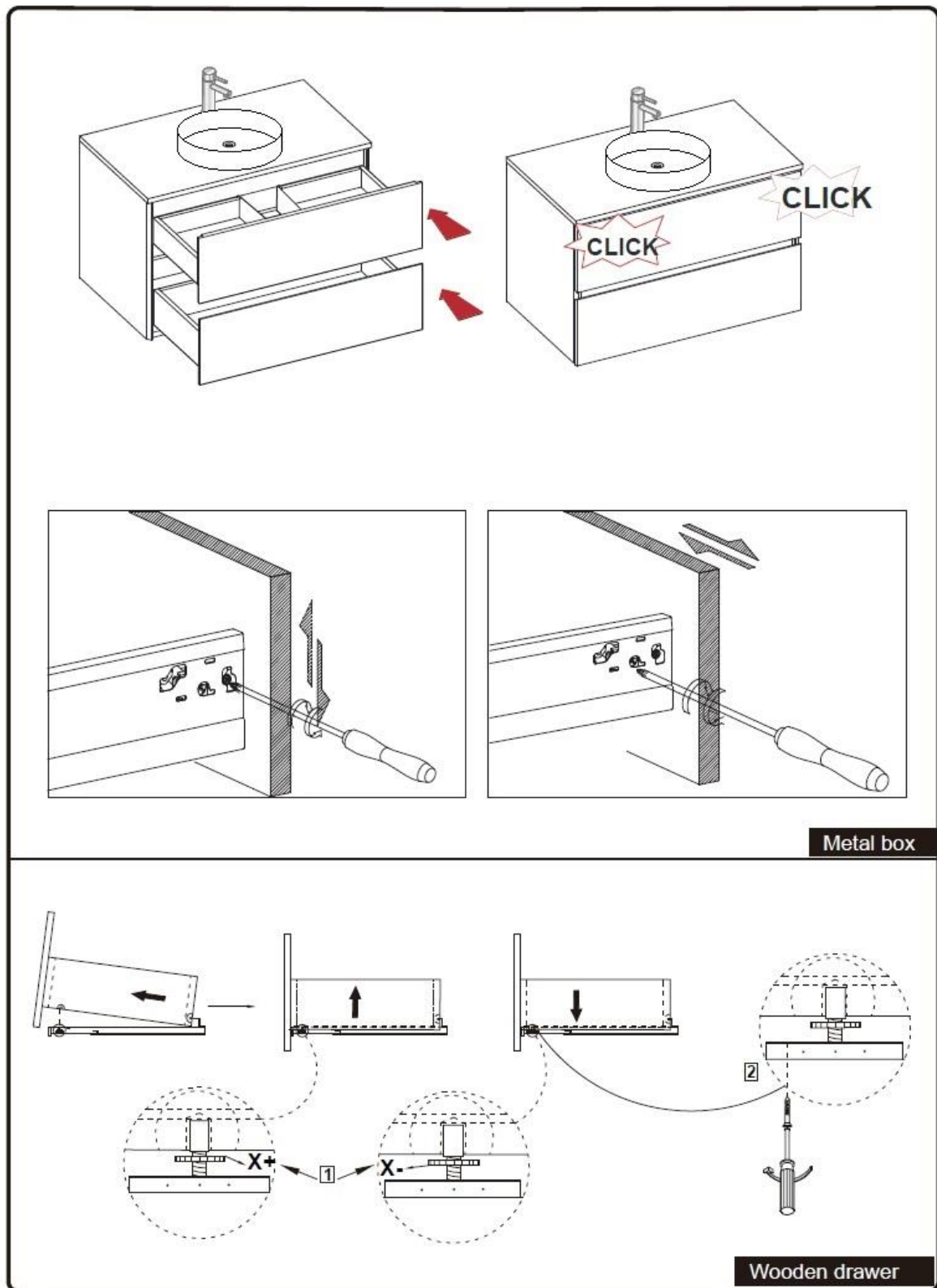
Basin Installation



PBS NZ
BUILDING SUPPLIES

PBS NZ
W: www.pbsnz.co.nz
E: orders@pbsnz.co.nz
23 Carr Street, Tuakau, 2121

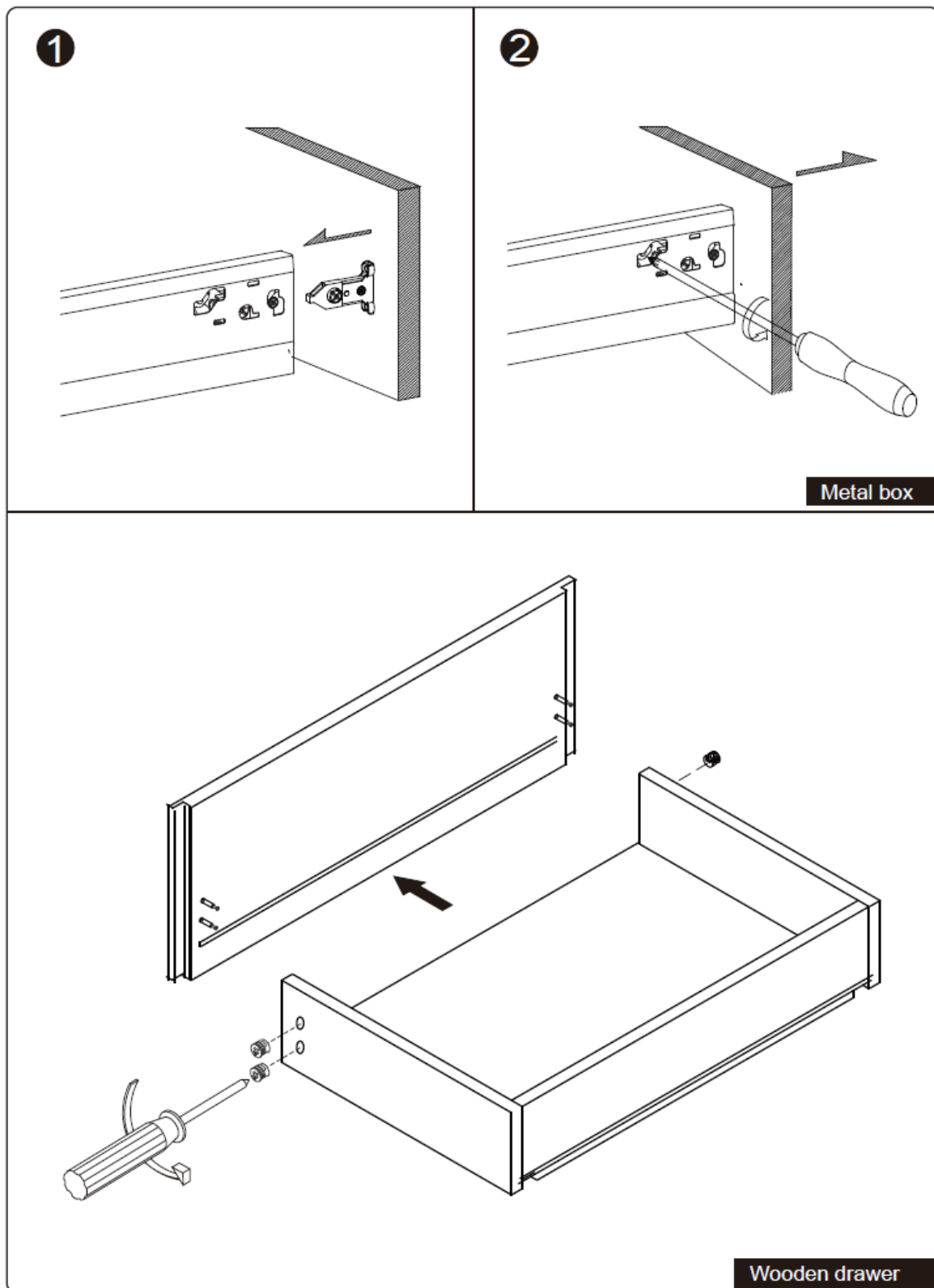
Installation and Drawer Adjustment



PBS NZ
BUILDING SUPPLIES

PBS NZ
W: www.pbsnz.co.nz
E: orders@pbsnz.co.nz
23 Carr Street, Tuakau, 2121





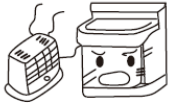



Drawer Removal



PBS NZ
BUILDING SUPPLIES

PBS NZ
W: www.pbsnz.co.nz
E: orders@pbsnz.co.nz
23 Carr Street, Tuakau, 2121

User Maintenance

<p>KEEP CABINET AWAY FROM WATER, which will cause deformation and damage.</p> <p>CAUTION X </p>	<p>DO NOT put lit cigarettes on the counter or basin, which will cause discoloration.</p> <p>CAUTION X </p>
<p>DO NOT pour acid or alkaline solutions into the basin, which will cause discoloration, leak or damage.</p> <p>CAUTION X </p>	<p>AVOID DIRECT SUNLIGHT, which may cause deformation and discoloration.</p> <p>CAUTION X </p>
<p>AVOID HEAT, which will cause deformation and discoloration.</p> <p>CAUTION X </p>	<p>DO NOT pour hot water into the basin, which may cause damage.</p> <p>CAUTION X </p>
<p>AVOID nylon brush, toilet cleaner or hydrochloric acid cleaner, which will cause damage</p> <p>CAUTION X </p>	<p>AVOID dropping hard objects into the basin, which may cause damage.</p> <p>CAUTION X </p>



PBS NZ
BUILDING SUPPLIES

PBS NZ
W: www.pbsnz.co.nz
E: orders@pbsnz.co.nz
23 Carr Street, Tuakau, 2121

To extend the life of the product, please do the maintenance work every day. The following maintenance methods are for reference only.

- Please dry the cabinet immediately with clean, soft cloth to mop up any spilt water.
- When the product is stained with dirt, wipe the cabinets clean with a soft, damp cloth, apply mild detergent, and dry immediately with another clean, soft cloth.
- Regularly check plumbing connections for leakage/presence of moisture. Tighten as required and mop up any residual water. Water left sitting in the cabinet can cause irreversible damage.
- Clean the plug and drain regularly to avoid drainage issues.



PBS NZ
W: www.pbsnz.co.nz
E: orders@pbsnz.co.nz
23 Carr Street, Tuakau, 2121