

aspiron

Model :AS-CA032

Bed Cleaner User Manual



Please read before product use.

Save this manual for future reference. Made in China.

Important safety instructions

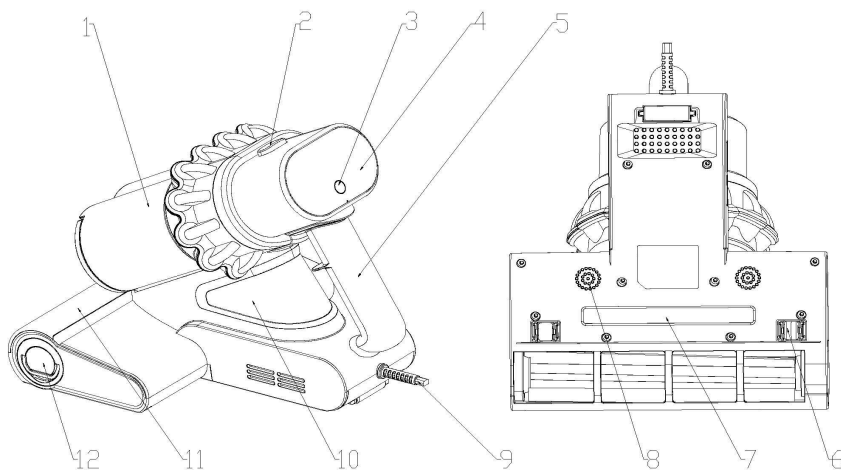
Please follow the following basic warnings when using this product:

1. ultraviolet rays can harm the skin and eyes of humans and animals. Do not directly irradiate human body, plants or animals.
2. The object to be irradiated and sterilized is first tested locally to avoid damage to light sensitive or non-UV resistant substances.
3. Please do not deliberately destroy the roller at the bottom of the product (safety switch) so that the UV lamp loses protection.
4. Unplug when not in use or before maintenance.
5. To reduce the risk of shock, do not use outdoors or on wet surfaces.
6. Please follow this instruction manual. Use only the functions recommended in this manual.
7. when the plug or power cord is damaged. Do not use it.
8. This product is intended for general household use, please do not use for commercial or other purposes.
9. Do not suck glass slag, screw and other sharp hard objects, as well as construction waste, to avoid damage to the machine.
10. Do not place the machine on a hot surface.
11. Do not use when the air duct is blocked. Otherwise, the motor will be damaged
12. Do not use when dust cup or filter is not installed. Otherwise, the motor

Special note:

Some special groups are not suitable for using this product, such as children, disabled people, people with mental illness. Unless they are using the product under supervision to ensure safety. Please ensure that children do not use this product as a toy.

Product component name and schematic diagram

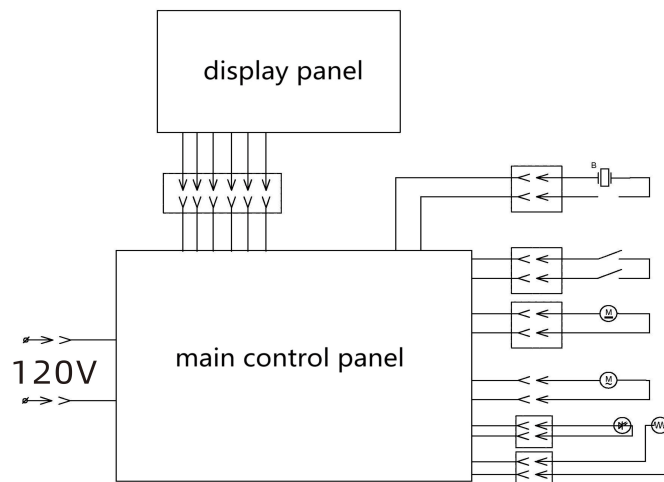


- | | |
|----------------------------|-----------------------------------|
| 1. Dust cup | 7. UV light window |
| 2. Dust cup release button | 8. Ultrasonic pore |
| 3. Power switch | 9. Power cord |
| 4. Functional display | 10. Main machine |
| 5. Handle | 11. Roll brush perspective window |
| 6. UV protection switch | 12. Rolling brush |

Product technical parameters

Product category	sterilization and mite removal vacuum cleaner	Product model	CY003
Rated voltage	120V ~ 50Hz	Machine power	400W
power cord length	5m	Noise	≤83dB (A)
vacuum	≥ 10kPa	Dust capacity	0.3L
N. W. :	1.9 Kgs	Product dimension	290mm*240mm*235mm

Circuit diagram

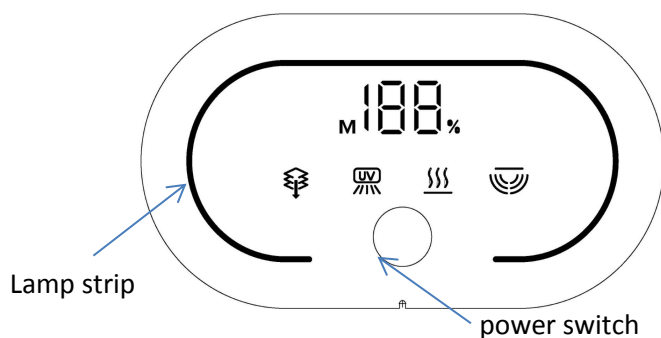


Machine operation instruction

1. Plug the power cord into the socket and switch on the power supply. Gently press the power supply in the display area of the screen to enter the automatic mode. When the machine is put on the working surface (bed sheet, quilt), UV, ultrasonic display work, lift the machine out.

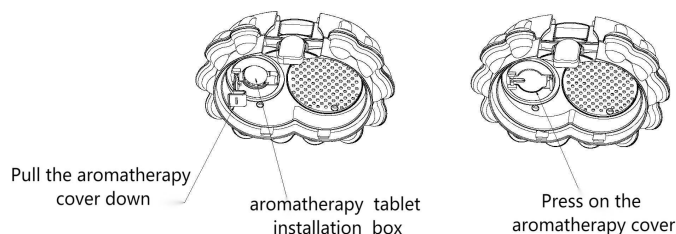
In normal operation, under the induction of dust mite intelligent sensor, through the control of computer chip, the color band display of dust mite quantity in the air intake echoes the work of the motor. When the air intake sensor detects the increase of dust mite quantity in the air intake, the blue light band display changes from left to right from blue to red (full red at most), and the motor speed increases, the data display will also increase synchronously (maximum 100). When the amount of dust mites in the wind decreases, the blue display is increased synchronously, and the motor data decreases

When the machine is working, press the switch again, the machine becomes full speed, press the machine again to close



2. Place the machine on the item to be cleaned (such as a bed), and slowly push and pull the machine back and forth for cleaning. (Recommended cleaning speed is less than 20 seconds per meter, back and forth three times).

3. The inside of the dust cup cover is equipped with an aromatherapy tablet installation box. Users can choose the aromatherapy tablets of the same specifications, which can keep the indoor environment with fresh fragrance after use. After separating the dust cup upper cover assembly from the dust cup assembly according to the cleaning and maintenance method, pull up the aroma cover as shown in the figure, put the aroma piece (diameter 18.5, thickness 6.5) and press the aroma cover. Reinstall the upper cover assembly on the dust cup and place it in the position of the main engine.



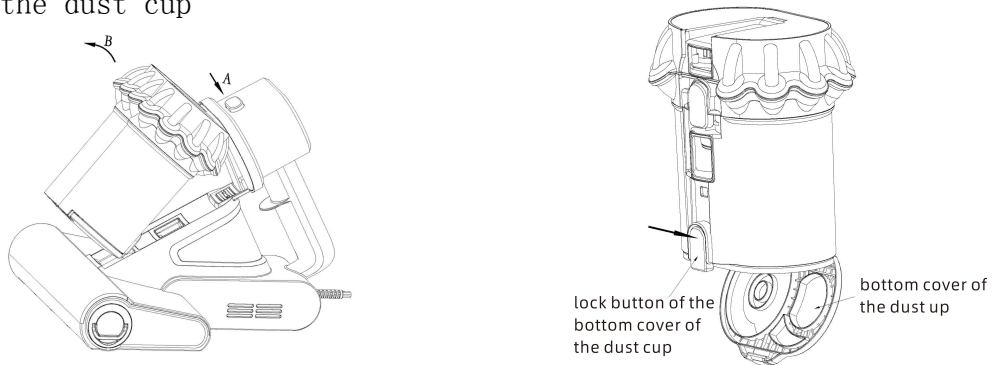
Note: This machine is equipped with 2-point protection and anti-tipping function. The machine stops UV sterilization and ultrasonic mite removal function when lifting too high. When using, please adjust the height between the machine and the contact surface to ensure the normal operation of the machine. If the UV lamp is raised too high and the ultrasonic function does not work, it is a normal reaction.

Cleaning and maintenance

Clean the dust cup assembly and brush assembly regularly. Because the mites in the adsorbed cotton may not be killed and will continue to reproduce, in order to avoid secondary pollution, it is necessary to pour ash in time, clean the dust cup assembly and the rolling brush assembly, and replace the new fine filter cotton when the high efficiency filter cotton is seriously polluted. Here's how:

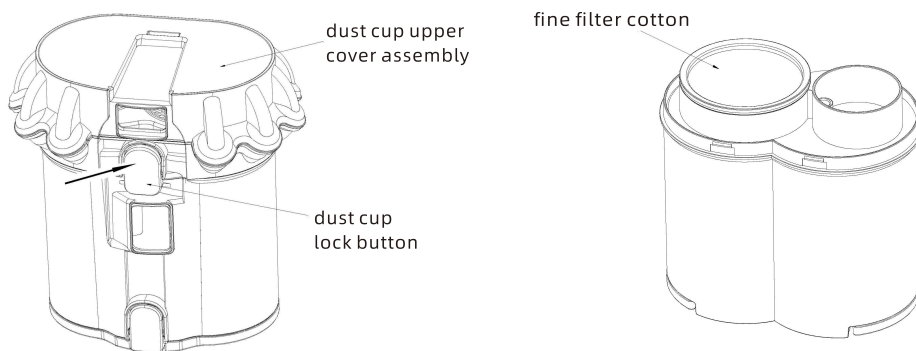
1. Turn off the machine and remove the power plug

2. Press A as shown in figure A to press the release button of the dust cup, cover the dust cup and rotate according to Figure B, lift the dust cup, and remove the dust cup

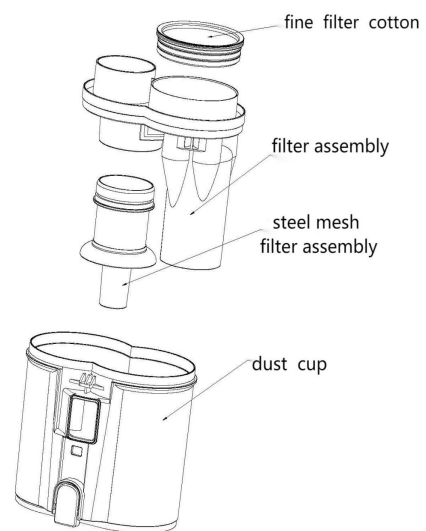


3. One-button ash pouring: Hold the dust cup and press the lock button of the bottom cover of the dust cup in the direction of the figure. The bottom cover of the dust cup will open automatically and the dust will be poured out

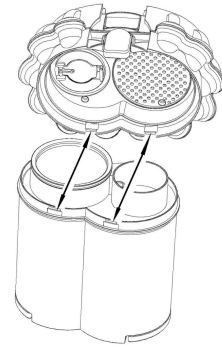
4. Clean and replace the fine filter cotton. Press the dust cup lock button according to the figure, remove the dust cup cover assembly, and then remove the fine filter cotton according to the figure, wash with water, dry it, put it back, and close the cover again (it is recommended to replace the fine filter cotton that has been cleaned for several times).



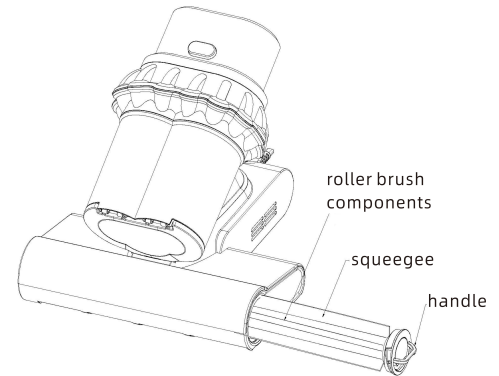
5. Clean the inner parts of the dust cup: after removing the upper cover assembly, Remove the parts shown one by one and clean them with water until they are fully cleaned. Reload after drying.



6. After the dust cup parts are reinstalled in place, install the upper cover assembly. Cover the top as shown. After the two buckle positions of the component are aligned with the installation slot on the dust cup, properly clamp into the dust cup, and then Press the opposite position step by step, when all in place, dust cup lock button to close the lid



7. Cleaning roller brush components:
 Open the small handle at the end of the rolling brush assembly according to the drawing and pull it out. When cleaning, After holding the handle, rinse the rolling brush with clean water and let dry, Reload.
 TLoading method: Push the brush rolling component inward through the mounting hole of the shell. When a crisp sound is generated, the brush rolling component has slipped into the installation position. At this time, the end is flush with the casing and installed in place.



Machine cleaning and storage

1. All routine care and maintenance work must be done after the vacuum cleaner is unplugged.
2. Often clean the garbage in the dust bucket to avoid the failure of the mite removal instrument.
3. Mite removal instrument surface can not be scrubbed with gasoline or oil, the application of soft cloth or neutral detergent scrub, scrub cloth must be wrung out, can not be water into the vacuum cleaner electrical components.
4. Bundle the power cord and put it away together with the machine.
5. Keep the storage area dry.
6. Heavy objects should not be stacked above the machine.

FCC Compliance

This device complies with Part 15 of the FCC Rules. Operation is subject to the following two conditions:

- (1) This device may not cause harmful interference, and
- (2) This device must accept any interference received, including interference that may cause undesired operation.

aspiRon

Manufacturer: Shenzhen AspiRon Technology Co., Ltd.

Address: Room **2803B**, Building C, Galaxy World Phase II, Minle
Community, Minzhi Street, Longhua
District, Shenzhen, Guangdong, China

E-Mail: support@aspiRon.co