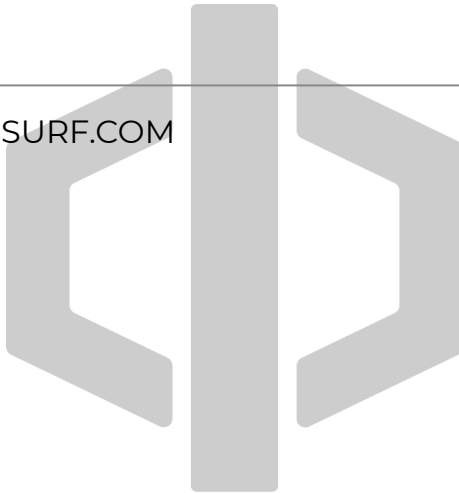




FTERO DOME FOIL WING

USER MANUAL ©

WWW.FTEROSURF.COM







CONTENT

CONTENT	3
RELEASE OF LIABILITY	5
RELEASE OF LIABILITY, CLAIM WAIVER, ASSUMPTION OF RISK	5
ASSUMPTION OF RISK	5
OVERVIEW	7
SAFETY AND PRECAUTIONS	8
FOIL WING SAFETY	8
DANGERS FROM THE FOIL WING	9
DANGERS FROM THE BOARD OR FOILBOARD	10
DANGERS TO UNINVOLVED THIRD PARTIES	11
WEATHER RELATED DANGERS	11
USING YOUR WING	12
FIRST USE	12
Inflating, Recommended Pressure & Deflating	12
PACKING UP YOUR WING	13
INFLATING / DEFLATING WING	18
CARING FOR YOUR WING	21
WING SIZE RECOMMENDATION	22
WARRANTY POLICY	23
WARRANTY CLAIMS	24





RELEASE OF LIABILITY

RELEASE OF LIABILITY, CLAIM WAIVER, ASSUMPTION OF RISK

By assembling and/or using this FTERO product, you agree that you have read and understood the entire FTERO product owner's manual, including all instructions and warnings contained in that manual, prior to using the FTERO product in any way.

You additionally agree that you will ensure any additional or subsequent user of your FTERO product will read and understand the entire FTERO product Owner's Manual, including all instructions and warnings contained in that manual, prior to allowing that person to use your FTERO product.

ASSUMPTION OF RISK

Use of the FTERO product and any of its components involve certain inherent risks, dangers, and hazards that can result in serious personal injury and death to both the user and to nonuser third parties. In using the FTERO product, you freely agree to assume and accept any and all known and unknown risks of injury to you and to third parties while using this equipment.

The risks inherent in this sport can be greatly reduced by abiding by the warning guidelines listed in this owner manual and by using common sense.



RELEASE AND WAIVER OF CLAIMS IN CONSIDERATION OF THE SALE OF THE FTERO PRODUCT TO YOU, YOU HEREBY AGREE TO THE FULLEST EXTENT PERMITTED BY LAW, AS FOLLOWS:

To waive any and all claims, that you have or may in the future have against FTERO SURF LTD and all related parties resulting from use of the FTERO Product and any of its components. To release FTERO SURF LTD and all related parties from any and all liability for any loss, damage, injury or expense that you or any users of your FTERO product may suffer, or that your next of kin may suffer, as a result of the use of the FTERO product, due to any cause whatsoever, including negligence or breach of contract on the part of FTERO SURF LTD and all related parties in the design or manufacture of the FTERO product and any of its components.

In the event of your death or incapacity, all provisions contained herein shall be effective and binding upon your heirs, next of kin, executors, administrators, assigns, and representatives. FTERO SURF LTD-related parties have not made and expressly deny any oral or written representations other than what is set forth herein and the FTERO product User's Manual.

Whilst an exciting and upcoming sport, wing foiling is also considered a dangerous sport if practiced carelessly. As such, we highly recommend wearing protective gear such as an impact vest and a crash helmet, particularly if new to the world of foiling.

FTERO SURF LTD does not hold any liability in regards to injuries of any sorts. Please enjoy the sport at your own discretion.



OVERVIEW

The DOME Foil Wing. A lightweight, simple, high performance foil wing designed and engineered in the UK. Packing down small, the DOME is perfect for travelling riders looking for a stable, easy-to-master setup with incredible sailing potential!

It's the perfect first wing for any rider looking to get into this exciting sport, or it's an affordable upgrade for an intermediate rider that doesn't want to break the bank.

Our aim with the DOME was to create the perfect wing for beginner/intermediate riders, with the perfect blend of stability and affordability.

The DOME rides great when powered up, without feeling overwhelming and out of control. The slight extra flex means the DOME is an extremely pumpable wing, making your take-offs much easier.



SAFETY AND PRECAUTIONS

FTERO strongly recommends that should you yet be able to wing foiling or if you feel insecure, you should attend a licensed school to learn the basics of this exciting new sport. Become familiar with the safety precautions, which are readily available for safe wing foiling.

You should be in good physical condition and suffer from no medical conditions that may prevent you from wing foiling. Always act carefully to not endanger yourself or anyone else and especially do not endanger the safety of uninvolved third parties. Make yourself aware of the risks you take and limit them as much as possible.

Before going out on the water make sure you familiarise yourself with your FTERO equipment. For your own safety, read the following instructions as well as product descriptions very carefully.

FOIL WING SAFETY

Only use on unobstructed stretches of water. Only fly the Foil Wing if you are a good swimmer and you are wearing a life jacket. Use a leash equipped with a quick-release system so that you can completely detach yourself from the Foil Wing in an emergency.

Avoid power lines, telephone lines, airports, roads, buildings and trees. If you are using a board with a board leash, you must wear a helmet. Be aware of the general risks associated with water sports, such as stones and rocks, waves, sunburn, hypothermia, jellyfish, etc.



DANGERS FROM THE FOIL WING

WHEN WING FOILING YOU MAY FACE EXTREME FORCES OF THE ELEMENTS. TAKE CAUTION.

In rare cases a foil wing can cause dangerous situations. You can hurt yourself through uncontrolled water take-offs caused by gusty conditions, and the danger of collision with obstacles. There is a risk of injury due to an inability to control the foil wing in gusty conditions.

Using a leash allows you to keep the foil wing under a certain level of control. When not in use, an inflated wing must be secured with sand or heavy objects. Be careful, however, not to use sharp objects as this may tear the canopy/body. A wing filled with air can fly away at any time, injuring people and in extreme cases even killing them.

DANGERS FROM THE BOARD OR FOILBOARD

The use of a hydrofoil board is a high-risk activity and can be extremely dangerous if implemented incorrectly. This can result in serious injury or even death for the user or other individuals in the vicinity. All users of the FTERO DOME Foil Wing must be aware of the associated risks. These include loss of control, collision with the board and even drowning. Some of the foil components are extremely sharp and thus pose a potential risk.

To protect the rider and others against injury, the foil must be handled with special care from the point at which it is constructed until it is used. We recommend using a certified helmet at all times and an appropriate collision-proof or protective vest as well as a wetsuit and neoprene shoes.

Do not exceed your capabilities and maintain control over the Foil Board and the Foil Wing at all times. Do not push beyond your limits when using the Foil Wing, and ride at a speed that is in line with your ability level.

Be aware of your surroundings, and familiarise yourself with them. Do not endanger others by coming too close to swimmers, boats, jetties and other objects that could be damaged by you or the foil. Do not use the foil in shallow waters. This could also result in injury to you and damage to your foil. You should also be aware that individual components on this product are exposed to natural forces and may be subject to wear.



DANGERS TO UNINVOLVED THIRD PARTIES

It is within your responsibility to check whether uninvolved people or other athletes may be endangered or injured by your actions or your gear. Do not foil wing foiling at places where uninvolved third parties might get injured. Avoid flying the foil wing in the vicinity of other water users such as swimmers, kayakers, windsurfers, water-skiers and boaters.

WEATHER RELATED DANGERS

Avoid offshore wind and be careful with an onshore wind. Get information on tidal and sea current conditions at your spot. Get information from both the weather report and the locals on prevailing weather conditions. Never use the foil wing with wind forces so strong that you are unable to maintain precise control. Do not use the foil wing when wind conditions are likely to change dramatically. Never use this foil wing when thunderstorms are nearby or when such storms have a good chance of developing (check the weather report). Leave the water immediately when a storm is approaching. You are in a life threatening situation since you may be struck by lightning.



USING YOUR WING

FIRST USE

When you first unbox your wing, please check thoroughly for any signs of damage. Although we run a strict quality control process, unfortunately, some manufacturing errors may slip through unnoticed. Should you receive a faulty product, please contact us immediately at team@fterosurf.com to advise on next steps.

To inflate your wing for the first time and any time thereafter, lay the deflated wing out on a flat piece of land, preferably grass, so as to prevent any tears that could be caused by a rough surface. If possible, try to inflate in a place that is sheltered from the wind, as this will make managing your wing easier and prevent loss of control.

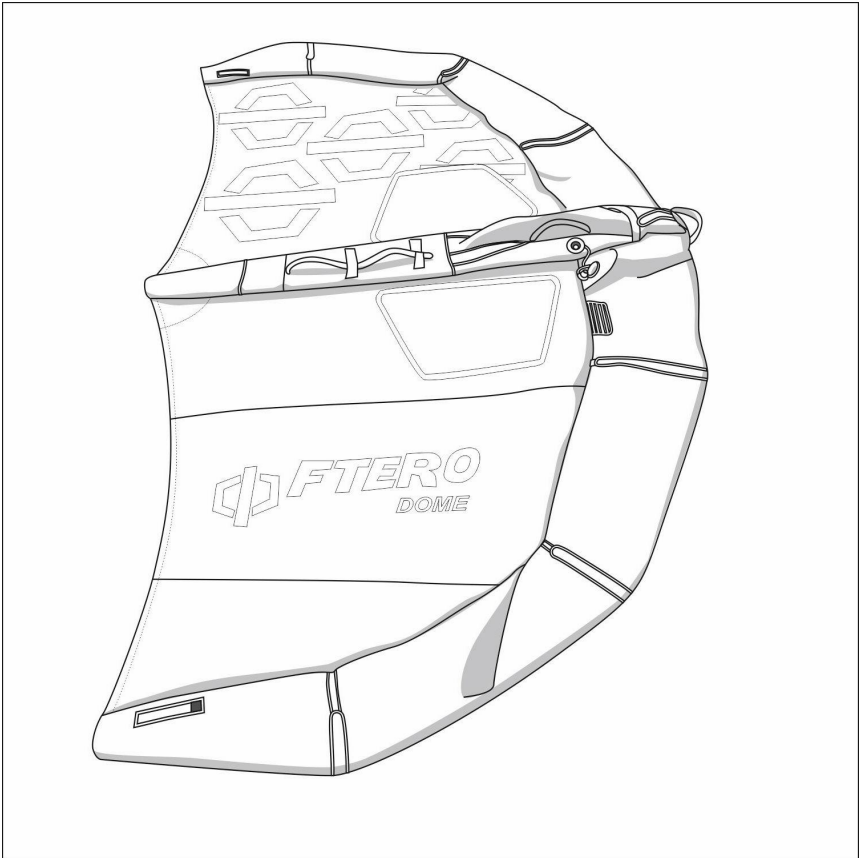
Inflating, Recommended Pressure & Deflating

Insert the pump nozzle into the inflation valve and begin pumping. **The recommended pressure for our wings is between 5-7 PSI.** Damage caused to the wing due to over-inflation will result in voiding of the warranty.

To deflate your wing, unscrew the protective cap and press & turn the yellow clockwise pin. Repeat on the second valve.



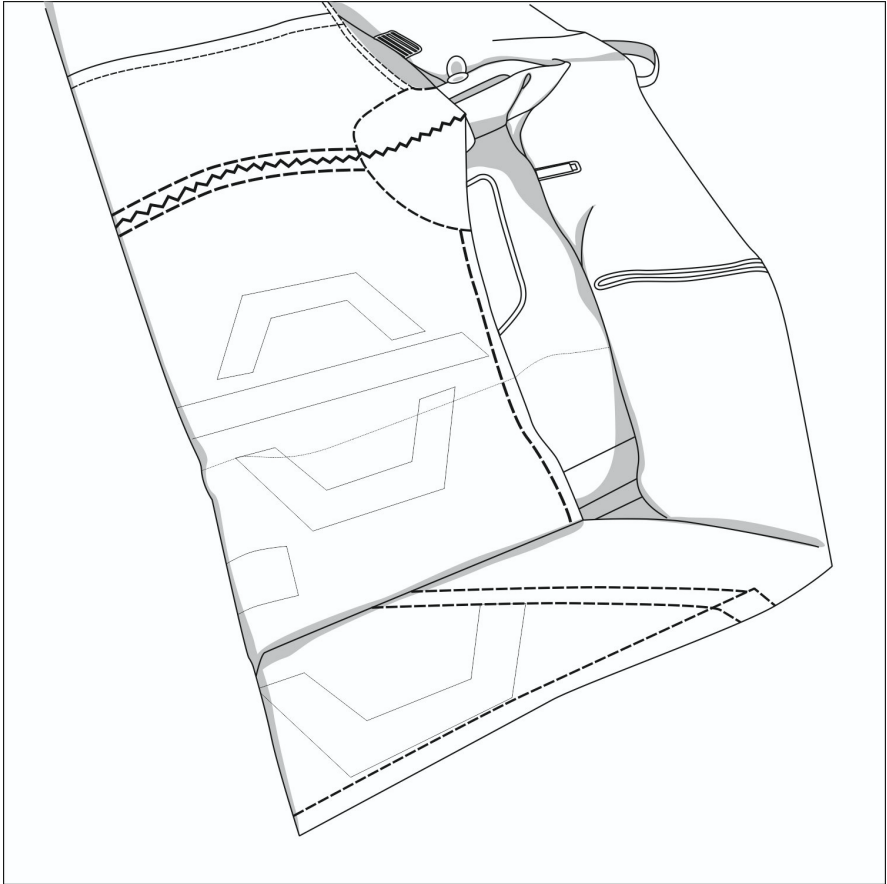
PACKING UP YOUR WING



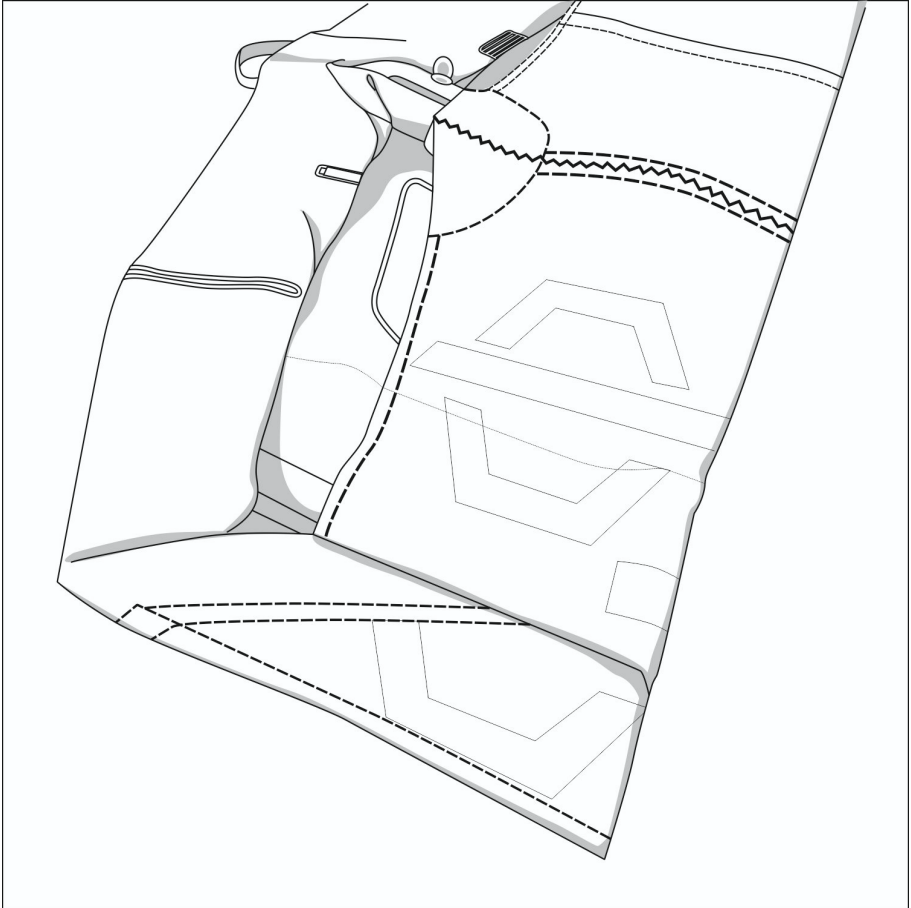
Lay the wing out on a flat piece of land ideally shielded from the wind. Avoid sharp/rough ground. Make sure the air valves are fully open.



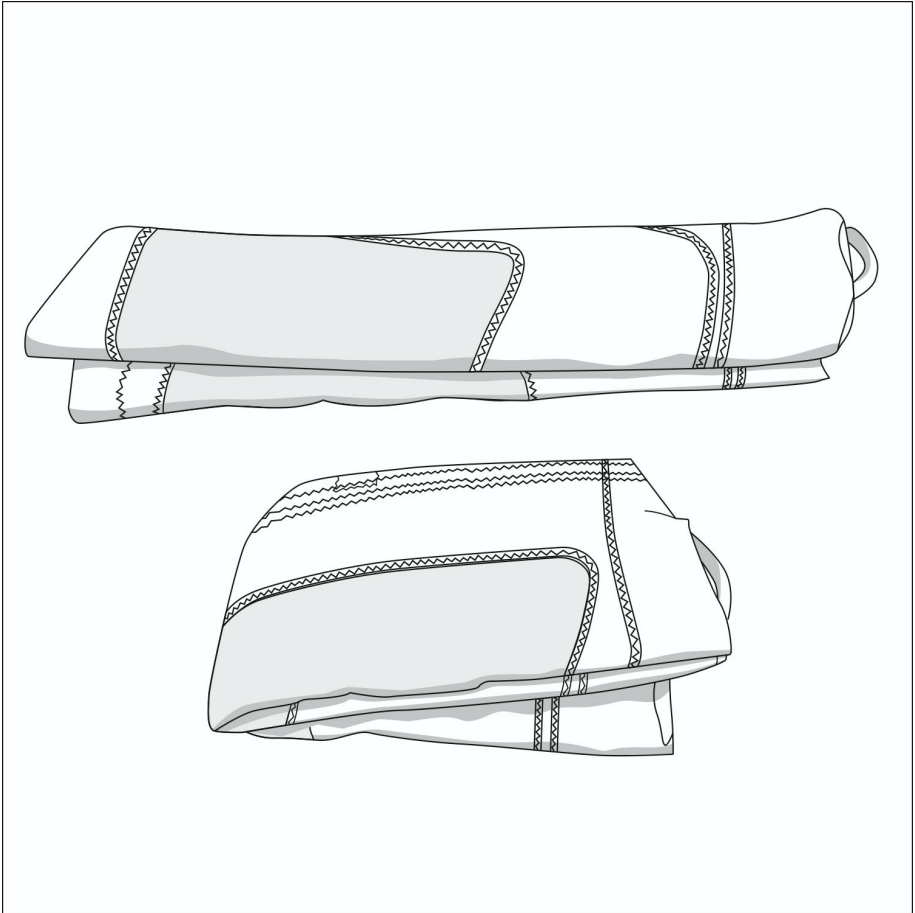
Fold up the first half of the wing, in between the bottom two handles.



Start rolling the wing from the outer edges towards the middle, stopping at the central strut.



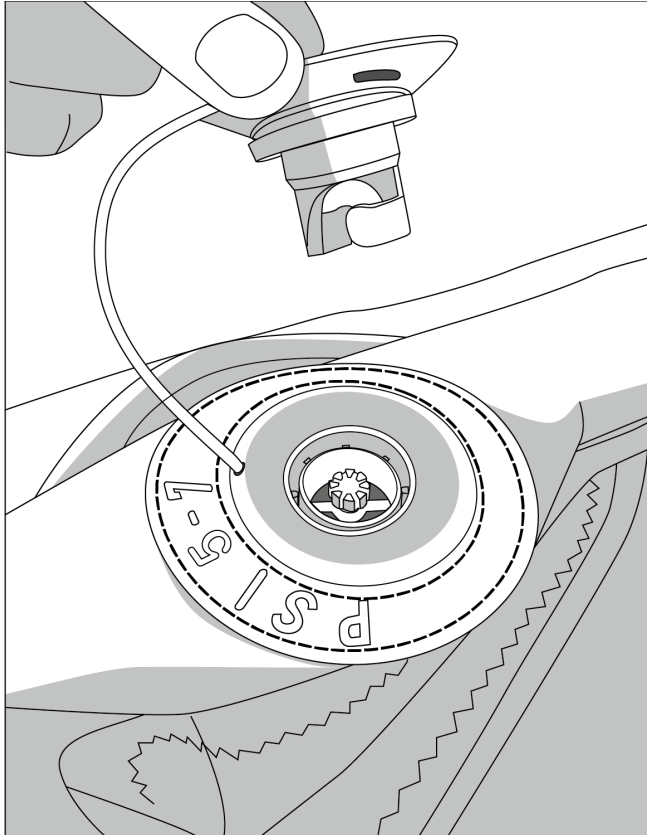
Repeat on the other side.



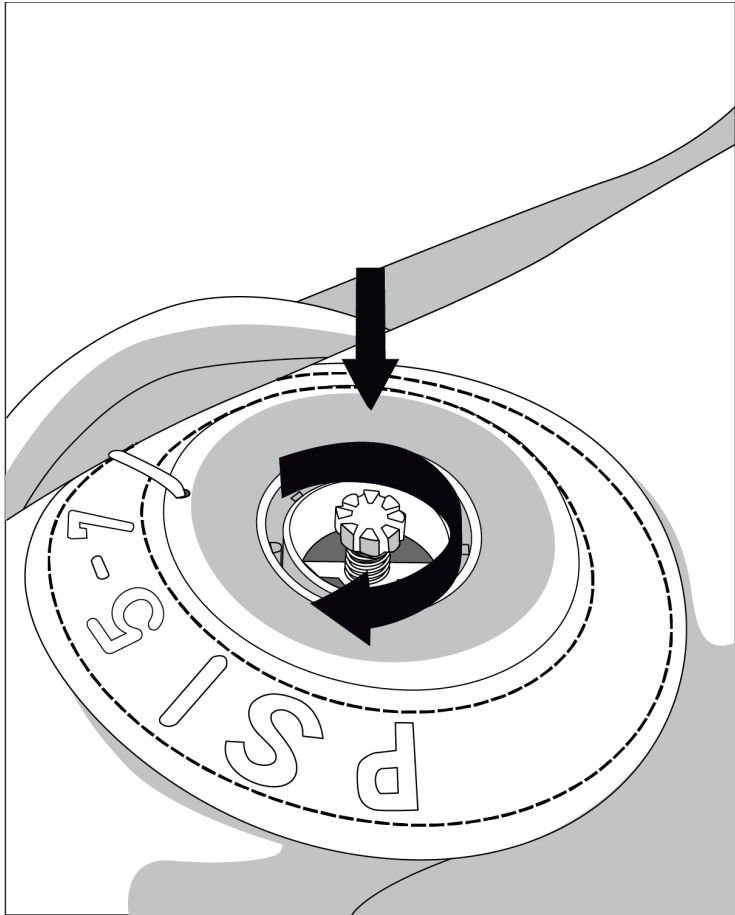
Once folded into the centre, carefully fold in half again whilst trying to avoid excessive creasing of the window.



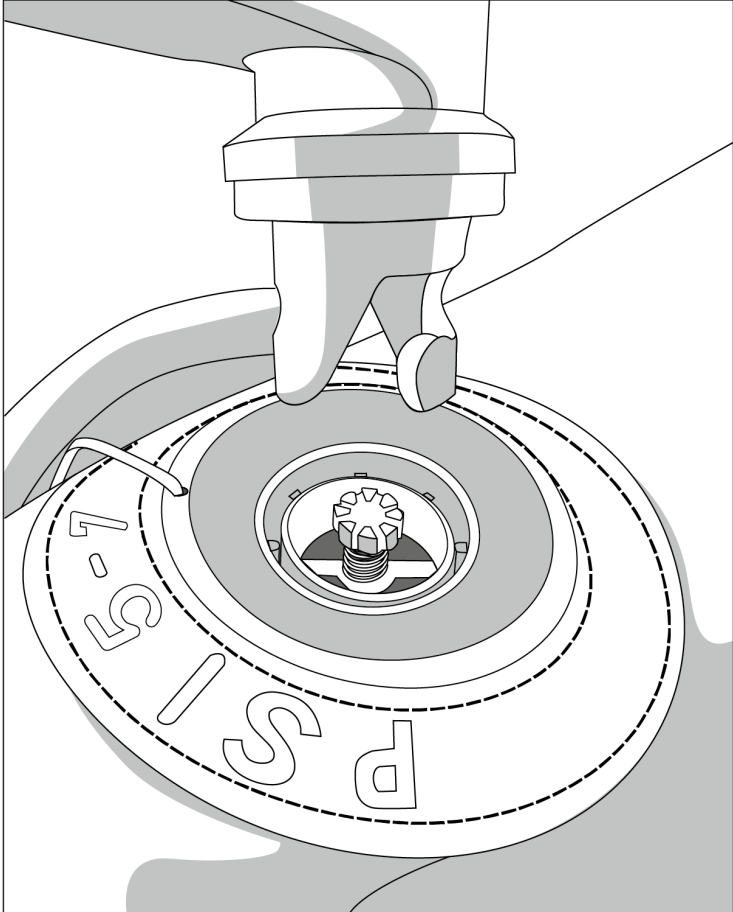
INFLATING / DEFLATING WING



Unscrew protective cap to reveal valve. When the yellow pin is in a depressed position, the valve is open. When it is in the outer position, the valve is closed.



To change the position of the yellow pin, press down and turn clockwise to lock it into the open position; and counterclockwise to release it into the closed position. To INFLATE, the pin must be in the CLOSED position. To DEFLATE, the pin must be in the OPEN position.



Insert the twist & lock nozzle of your pump securely into the valve and begin inflating.



CARING FOR YOUR WING

In using your wing, avoid bringing the foil wing into contact with sharp objects as this may lead to tears in the leading edge, canopy or bladder. Be careful not to hit the wing against the foil.

Do not leave the wing in excessive sun as this may damage the material over time or increase the internal pressure, leading to internal bladder stress fracture as well as external stitching stress fractures.

Before packing up make sure the wing is dry and clean from dirt/sand/etc. It is important to keep sand and water free from the air pump as well as the valves too as this may lead to internal damage of the wing.

Damage due to careless wing care, such as but not limited to the above, will also void the warranty.





WING SIZE RECOMMENDATION

Although the recommended wing size will ultimately depend on a multitude of factors such as skill level, rider weight/height and wind conditions, an estimate of wing size has been summarised in the below table with regards to the wind speeds that the rider will be using the wing in.

SIZE	WIND SPEED
3m²	20-30 knots (23-50 mph)
4m²	14-22 knots (16-34 mph)
5m²	10-17 knots (11-28 mph)
6m²	5-15 knots (6-17 mph)



WARRANTY POLICY

FTERO Warrants this product to be free of major defects in material or workmanship to the original purchaser for a period of six months from the original date of purchase. This warranty is subject to the following limitations: The warranty is valid only when the product is used for foil wing foiling on water and does not cover products used in rental or teaching operations.

FTERO will make the final warranty determination, which may require inspection and/or photos of the equipment, which clearly show the defect(s). If a product is deemed to be defective by FTERO, the warranty covers the repair or replacement of the defective product only.

FTERO will not be responsible for any costs, losses or damages incurred as a result of loss of use of this product. The warranty does not cover damage caused by misuse, abuse, neglect or normal wear and tear including but not limited to, rigging with other than FTERO components, damage due to excessive sun exposure, damage caused by improper handling or storage, damage caused by use in the waves or shore break and damage caused by anything other than defects in material and workmanship.

This warranty is voided if any unauthorized repair, change or modification has been made to any part of the equipment. The warranty for any repaired or replaced equipment is good from the date of the original purchase only. The original purchase receipt must accompany all warranty claims. There are no warranties that extend beyond the warranty specified herein.



WARRANTY CLAIMS

Warranty claims must be processed and be issued a return authorization prior to shipping to FTERO. Please contact team@fterosurf.com for more information.

