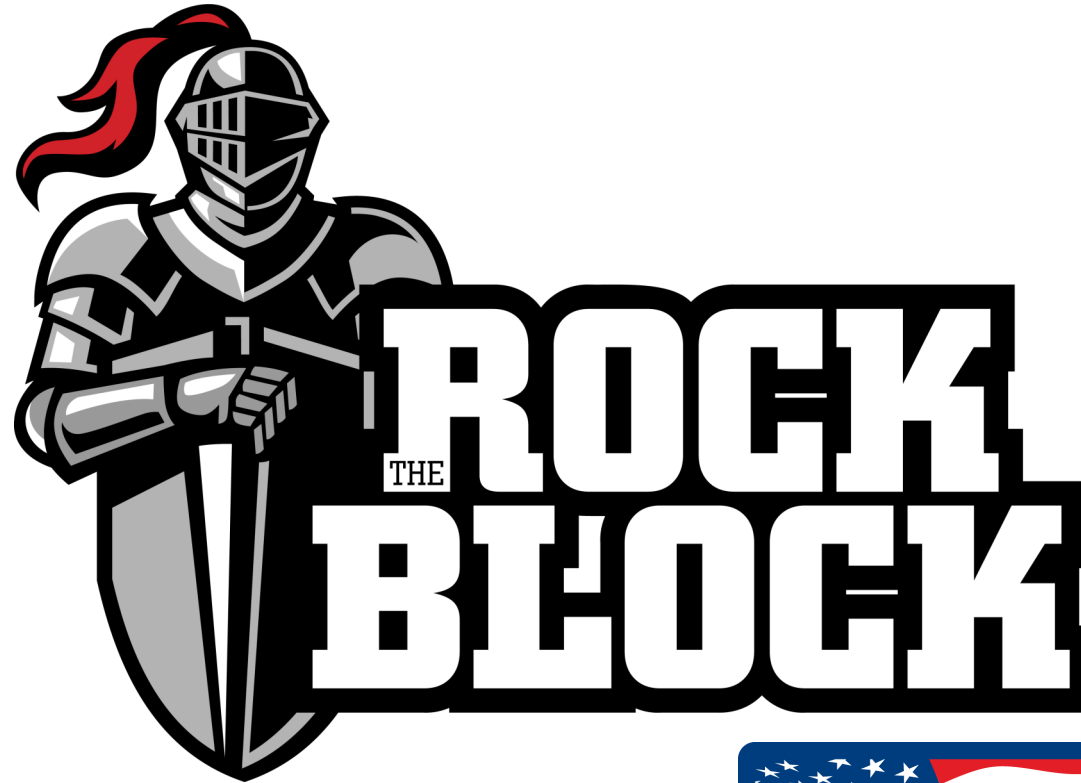


LANRK4MAK13

Installation Instructions

**Rock Block Kit for 13ft MacDon, Agco, Challenger, Krone, Massey-Ferguson and Krone
Center-Pull Disc-Mower Conditioners**

Includes MacDon R80, R113, Krone ECTC400 and Massey 1383



225 Main Street South
Bristol, SD 57219

Mobile: (605) 216-4852 Office: (605) 492-3641



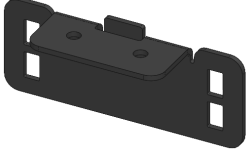

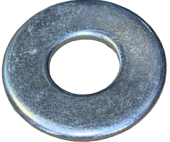


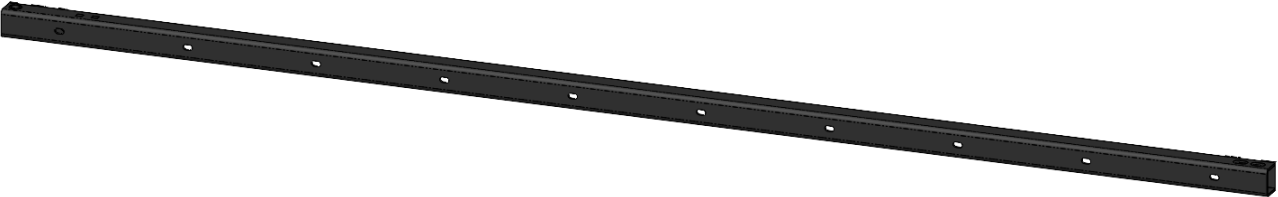



Email: horterfarm@nvc.net



Numerical Parts List

| Part Numbers | Description | Qty |
|----------------------|---|------------|
| LANRK433 | Center Mount—MacDon, Agco, Krone, etc. | 1 |
| LANRK434 | Side Mount—MacDon, Agco, Krone, etc. | 2 |
| LANRK444 | Hole Template—MacDon, Agco, Krone, etc. | 1 |
| LANRK441 | Center Support Flange—MacDon, Agco, Krone, etc. | 1 |
| LANRK4UNIBC13 | Universal 13ft Bar &Curtain Kit | 1 |
| LANRK432 | 13ft Universal Bar | 2 |
| LANRK4C163 | 163" Rubber Curtain | 1 |
| LANSS704 | Twist Lock 1/2" Bent Pin | 2 |
| REDB512 | 1/2" x 3" Hex Bolt | 2 |
| LANFWS55 | 1/2" SAE Washer | 4 |
| RED1F30 | 1/2" Top Lock Nut | 2 |
| LANFXG26 | 5/16" x 3/4" Carriage Bolt | 20 |
| LANNAS2 | 5/16" Serrated Flange Nut | 20 |
| LAN18A00 | 3/8" x 1" Hex Bolt | 8 |
| LAN18000 | 3/8" Flat Washer | 24 |
| REDODTT | 3/8" Top Lock Nut | 8 |
| REDB204 | 5/16" x 1" Hex Bolt | 3 |
| LAN1133 | 5/16" Flat Washer | 6 |
| LAN1616 | 5/16" Nyloc Nut | 3 |

Pictorial Parts List

| | | | | | |
|--|---|---|---|---|---|
|  |  |  |  |  |  |
| LANRK433 (1) | LANRK434 (2) | LANRK444 (1) | LANRK447 (1) | LAN1133 (6) | |
|  |  |  |  |  | |
| LAN18A00 (8) | LAN18000 (24) | RED0DTT (8) | REDB204 (3) | LAN1616 (3) | |
|  | | | |  | |
| LANRK432 (2) | | | | LANSS704 (2) | |
|  |  |  |  |  | |
| REDB512 (2) | LANFWS55 (4) | RED1F30 (2) | LANFXG26 (20) | LANNAS2 (20) | |

Kit Installation

Refer to Figures 1 & 2

1. Fold up the two panels/curtains of the moco.
2. Clamp the drill template (LANRK444) to side of the frame with the front edge flush with the frame.
3. Drill the 2 holes on each side with a 13/32" bit.
4. Mount the side mounts (LANRK434) with the 3/8" x 1" hex bolts, washers and top lock nuts and tighten.

Note: When installing the bars, it may be necessary to space the side mounts with 3/8" washers to align the holes.



Figure 1



Figure 2

Kit Installation

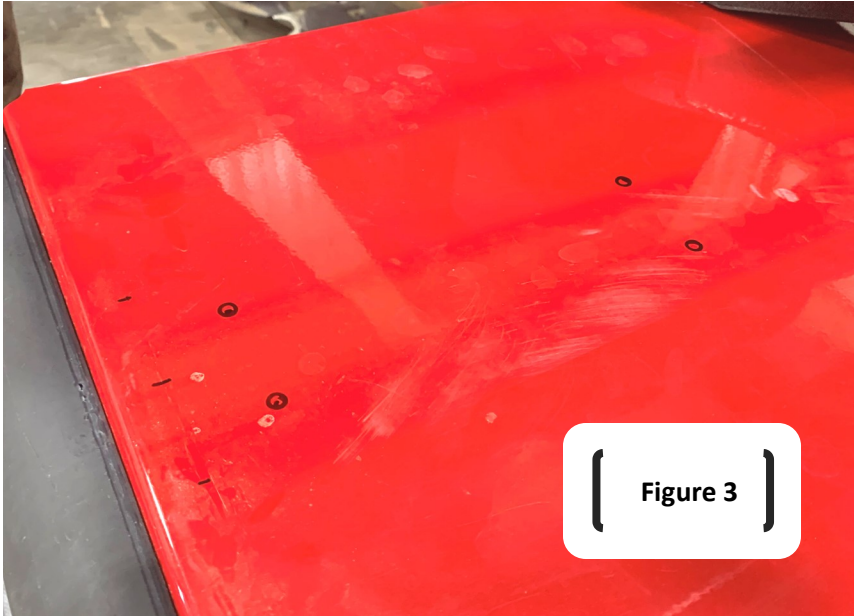


Figure 4



Refer to Figures 3—5

5. Measure and mark the center of the frame's middle section. Align the center of the center mount (LANRK433) with the mark and the front edge of the moco with the mount's slot. Mark the four 3/8" holes.
6. Center punch and drill them with a 13/32" bit.
7. Attach the center bracket with (4) 3/8" x 1" hex bolts, top lock nuts and (8) washers. Tighten.

Skip to Step 13

Figure 5



Kit Installation

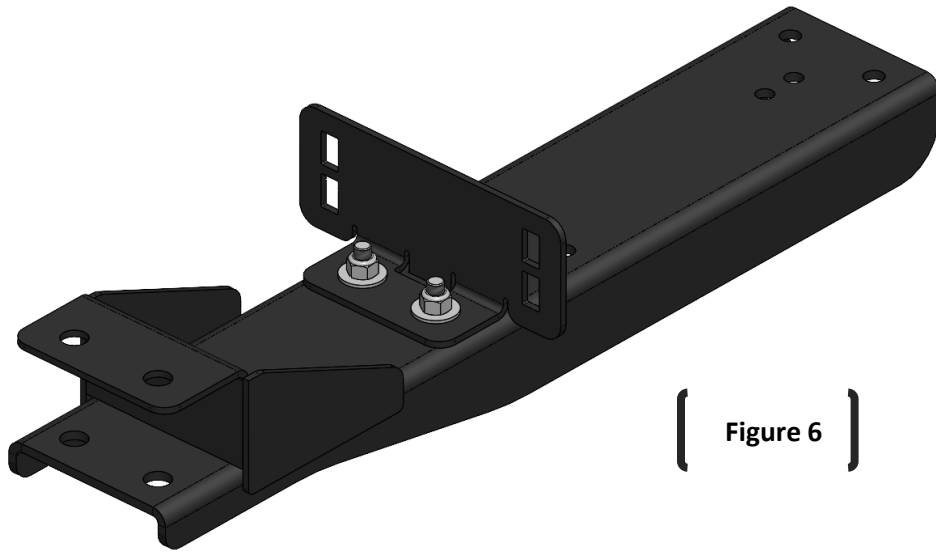


Figure 6



Figure 7

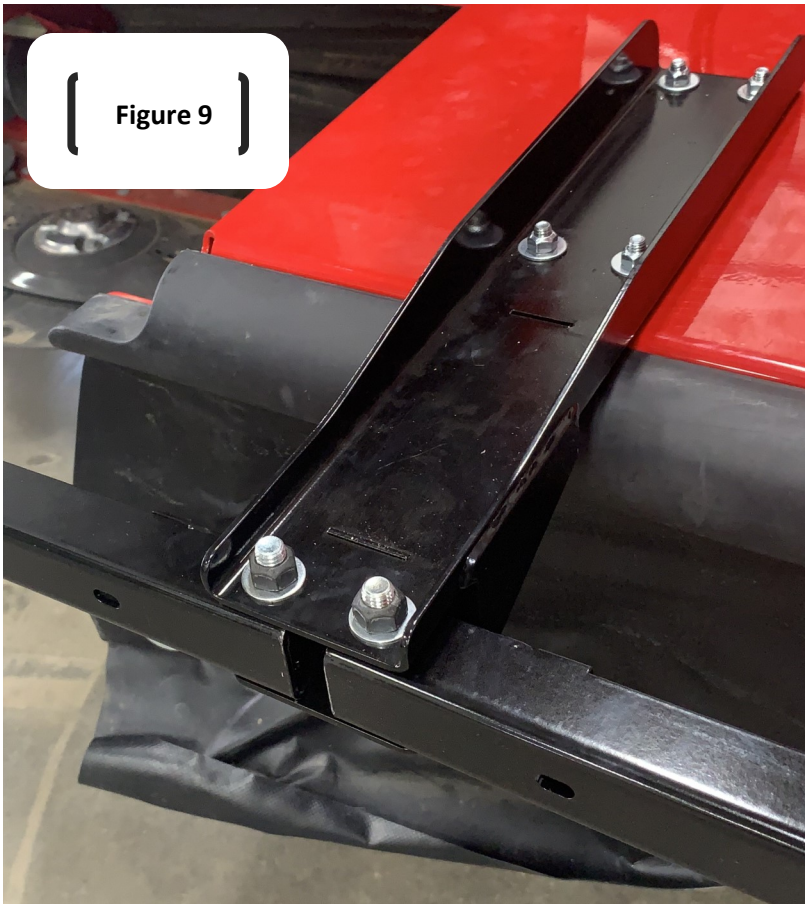
Refer to Figures 6 & 7

8. On a MacDon, attach the support flange (LANRK447) to the center mount (LANRK433). Set the tab into the slot and fasten with 5/16" hex bolts, washer and nyloc nuts.
9. Mount to the top of the frame through the factory hole (as shown) with a 5/16" hex bolt, washers and nyloc nut.
10. If there are usable bolts in center of the front edge of the frame, remove and reuse them to fasten the support to the frame.
11. Otherwise, use a 13/32" bit and drill two holes through the front edge using the support bracket as a guide.
12. Use the set of holes that keeps the mount at the same height as the side mounts and fasten with 3/8" hex bolts, washers and lock nuts.

Kit Installation

Refer to Figures 8—10

13. Set the bars (LANRK432) inside the center and side mounts. **The end with a pipe goes to the center mount.**
14. Fasten to the middle mount with the 1/2" hardware. Tighten until snug, but do not overtighten—bar needs to swivel.
15. Secure the outer bar end with a twist lock pin (LANSS704).
16. If the slots don't line up with the end mounts, unfasten the hex bolts and use 3/8" washers to shim it in or out until they align.



Kit Installation

Refer to Figures 11—13

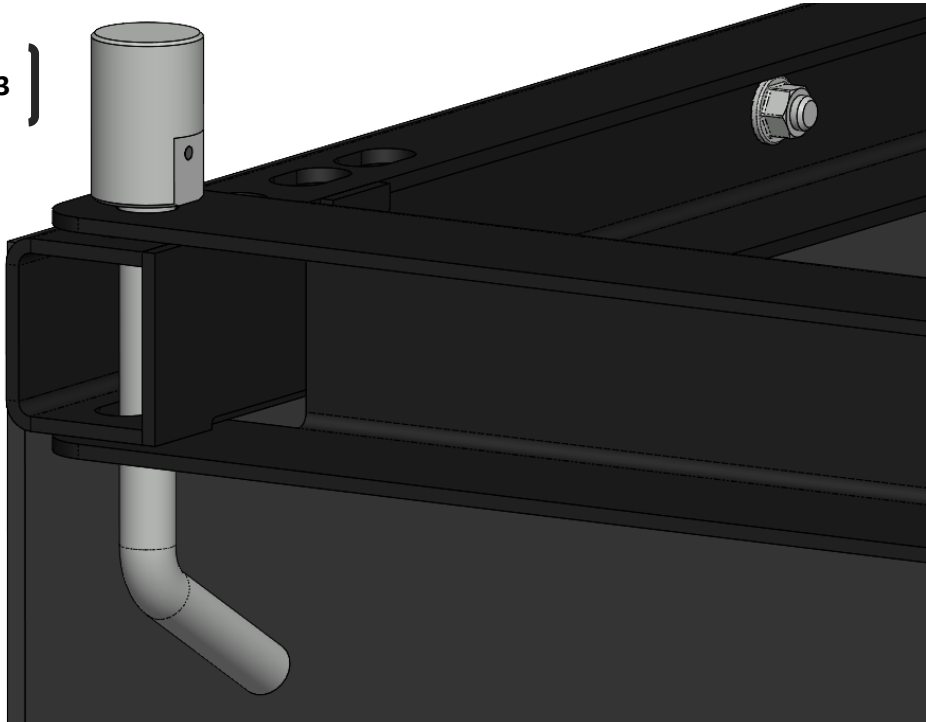
17. With the bars fastened on both ends, unroll the rubber curtain and hang it from the bars with the 5/16" carriage bolts and flange nuts (LANFXG26 & LANNAS2).
18. Press the bolt through the curtain, the bar and affix with the nuts on the inside.
19. Once all the hardware is started, begin tightening. When the carriage heads begin to indent the curtain, it is tight enough.
20. Lower moco to running height on a level surface. The curtain should be between just touching to 1" off the ground. If needed, remove some curtain material with a utility knife.



Figure 12



Figure 13



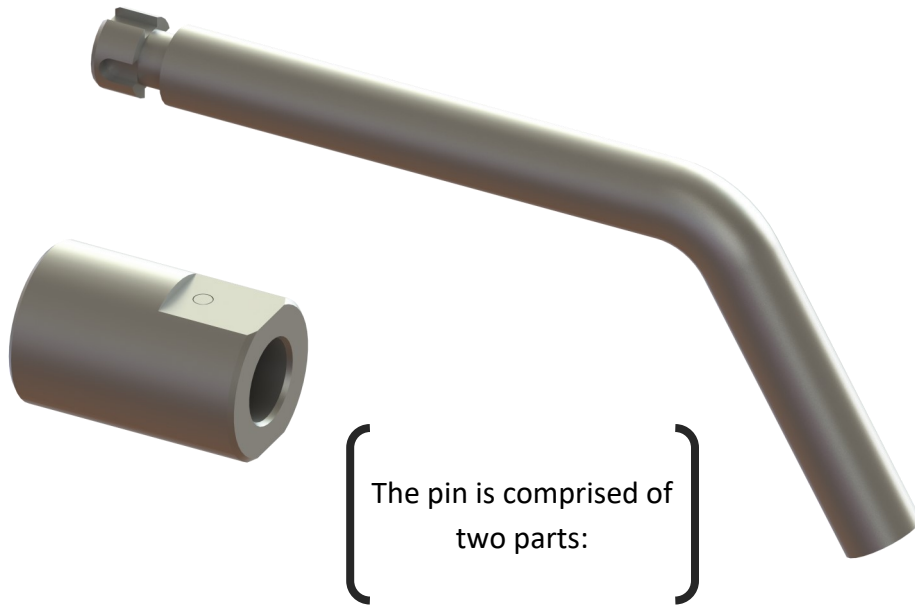
For further technical assistance,
Call Rock Block at:
(605) 216-4852



LANKOTA[®]

LANSS704 Instructions

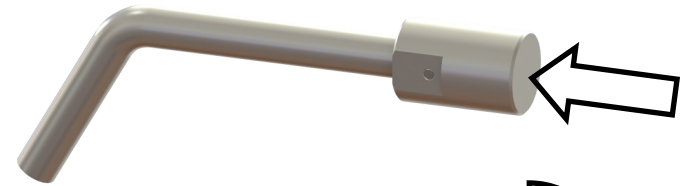
Lankota 1/2" Twist-Lock Pin



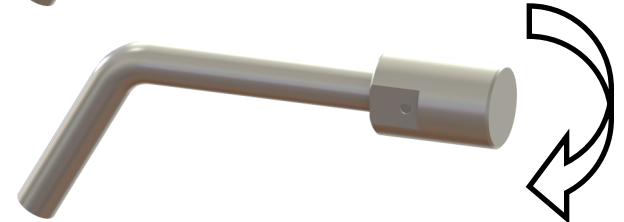
The LANSS704 is a patent pending pin designed by Lankota Inc. for the harsh environment of the field. The simple push, twist and release design ensures that the cap and pin cannot be separated by vibration or debris.

Removing LANSS704

Step 1: Push the cap in and hold.



Step 2: Twist cap 90° left or right.

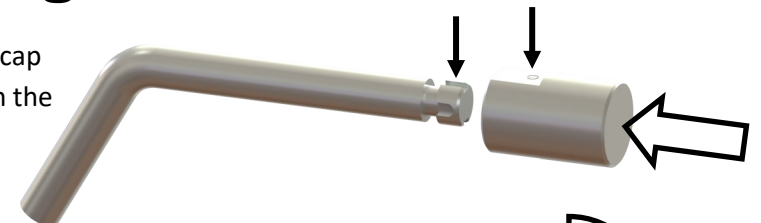


Step 3: Slide the cap off the pin.

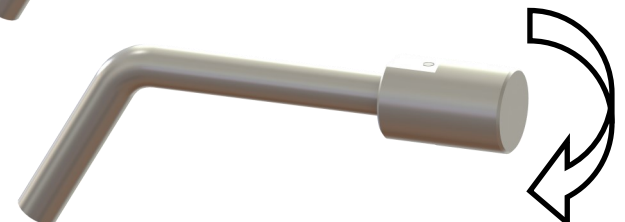


Installing LANSS704

Step 1: Align the cap retaining pin with the open groove and push on.



Step 2: Twist cap 90° left or right.



Step 3: Release the cap and ensure it is secure.

