



# PURE IONIC WATER™

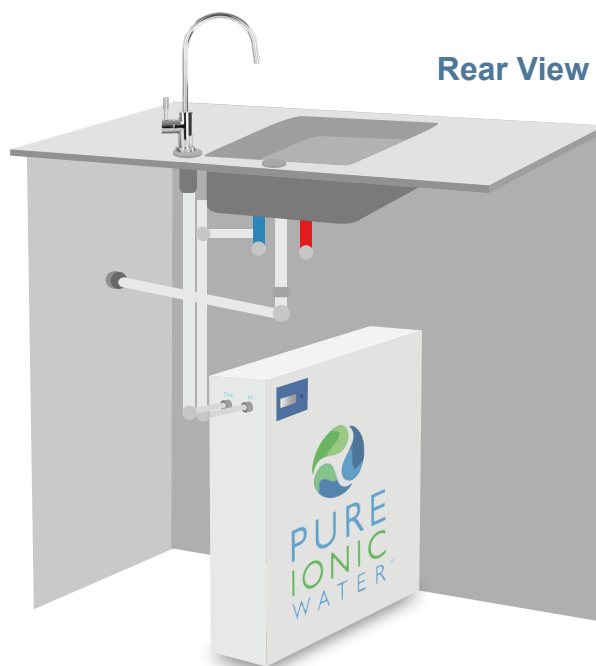
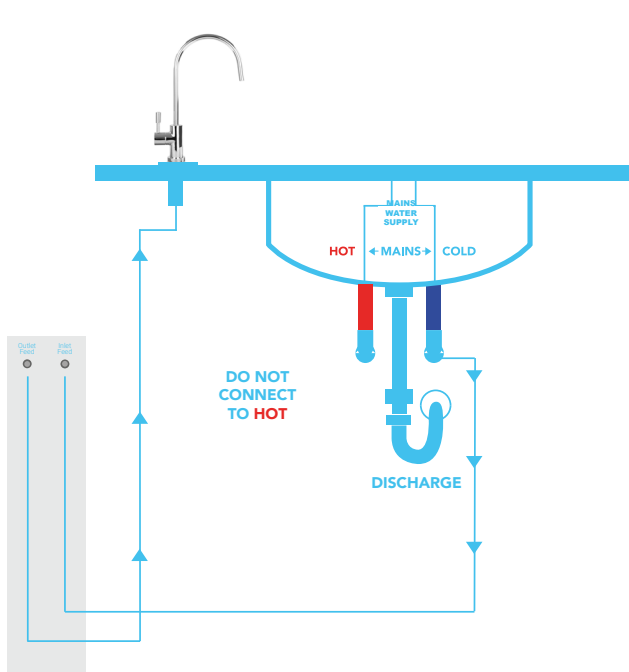
The Water of Champions

## **PURE IONIC WATER™ SYSTEMS**

Enhance Adsorption Ultrafiltration (E.A.U.) Technology

System Installation Manual

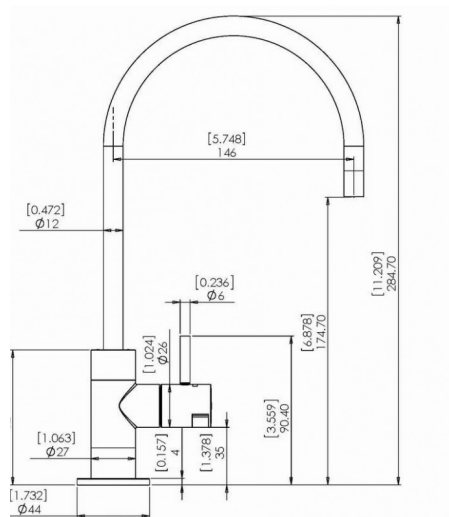
**E.A.U. Technology Schematic:**



**Rear View**

**40cm x 33cm x 10cm**

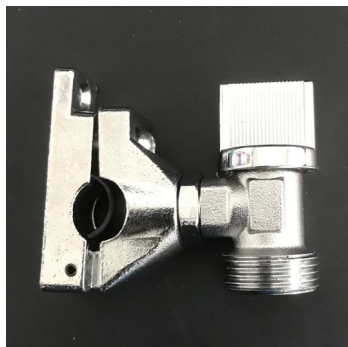
**Faucet Schematic:**



# ACCESSORIES



(a\*) tap connector



(b\*) piercing clamp



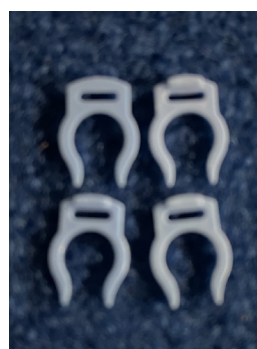
tap connector attached



(c\*) 1/4" isolator



(d\*) 1/4" pipe  
x3 lengths



(e\*) push fit grips  
x6



# INSTALLATION INSTRUCTIONS

## To conform with local bylaws

Your PIW system is made so it snugly fits under the sink and can easily be connected to the mains water supply that's already present.

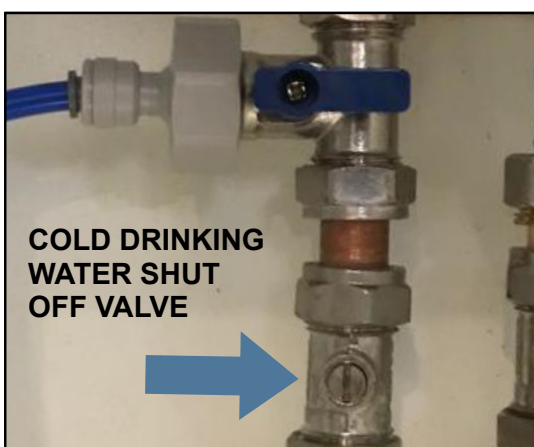


## Water Source

For ease of installation we recommend fitting the PIW system as close as you can to where the tap will be situated. Most customers fit the unit in the space directly under the kitchen sink.



If fitting a single filter tap, isolate the mains cold feed.



If fitting a triflow tap to replace your existing tap, isolate the hot and cold supplies.



Fit either the single or triflow taps. The installed tap must be left in the on position before running any water through the system. Only let water flow through the Pure Ionic Water™ system on install with the tap open and run for a minimum of 5 minutes.

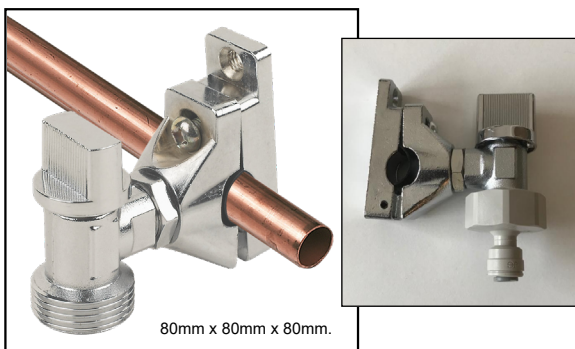


SEE VIDEO GUIDE

Look for a suitable 3/4" washing machine shut off valve, via a Tee piece to the cold drinking supply and screw on the provided tap connector (a\*). If not available use the supplied piercing valve (b\*).

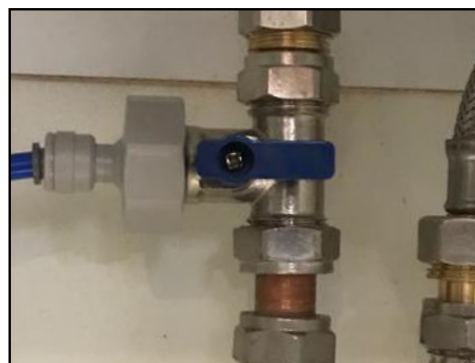


Alternately, you can use the piercing clamp supplied in the kit (a,b\*).



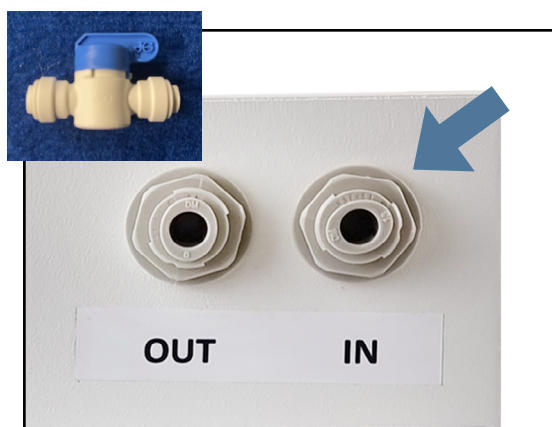
SEE VIDEO GUIDE

Using the 1/4" pipe provided (d\*), fit the 3/4 female fitting supplied, to the washing machine valve or into the piercing clamp.



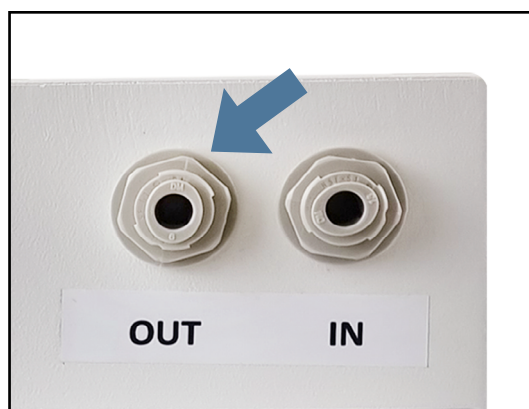
SEE VIDEO GUIDE

Use the 1/4" pipe (d\*) to length and connect to the white isolator valve (c\*), supplied, and then push fit the opposite end of the isolator valve in to the other pipe length which then pushes into the "IN" side of the filter box. See next page for ensuring pipe fitting is secure' to the end.



SEE VIDEO GUIDE

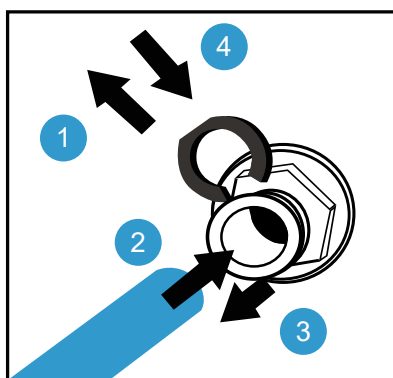
Insert 1/4" pipe (d\*) into the "out / faucet" side of the filter box, (this is the longer 1/4" pipe) and insert into either the single filter tap or the filtered side of the triflow tap if installed. (f\* fits on to the area pointed out by the arrow). See next page for ensuring pipe fitting is secure' to the end.



SEE VIDEO GUIDE



Make sure all pipes and fittings have been firmly pushed in and secure.

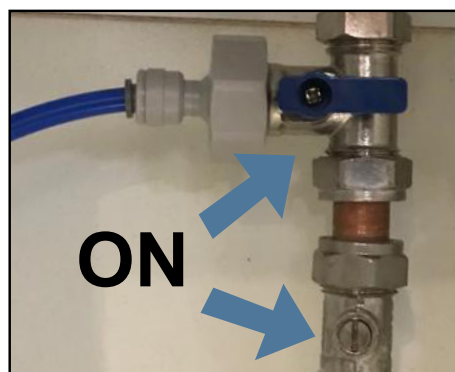


SEE VIDEO GUIDE

### To Connect the Pipe to a fitting:

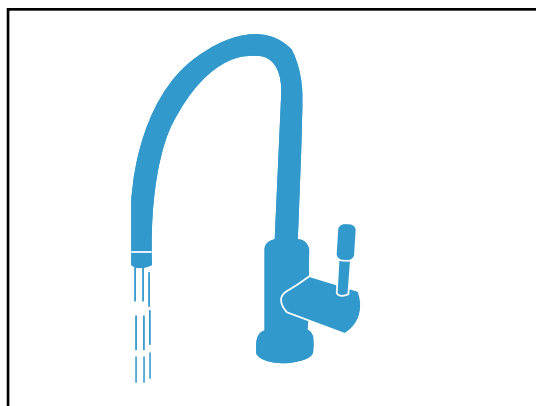
1. When pipe is inserted into each point a clip is required.
2. Remove the lock if present (not present in self-locking fittings).
3. Push to insert the pipe firmly until it stops.
4. Pull the collet back slightly.
5. Replace the lock (if present).

Turn on the water at the isolation valve, making sure the ¼" shut off valve is turned ON. **Check for any leaks.**

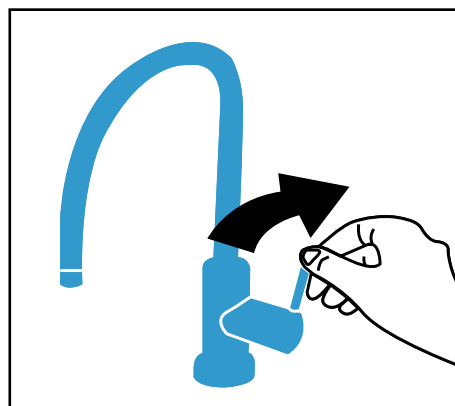


SEE VIDEO GUIDE

Open filtered tap and dispense filtered water, allowing it to run for approx. 5 minutes.



Turn the tap off and your PIW system is ready to dispense your quality drinking water.



### **Flushing the System Before Drinking**

Before turning on the water supply to flow through the Pure Ionic Water™ System for the first time, can you make sure the tap is in the open position. Once this is done please turn the blue isolator tap (that is connected to the pipes leading into the feed hole on the system) to the on position.

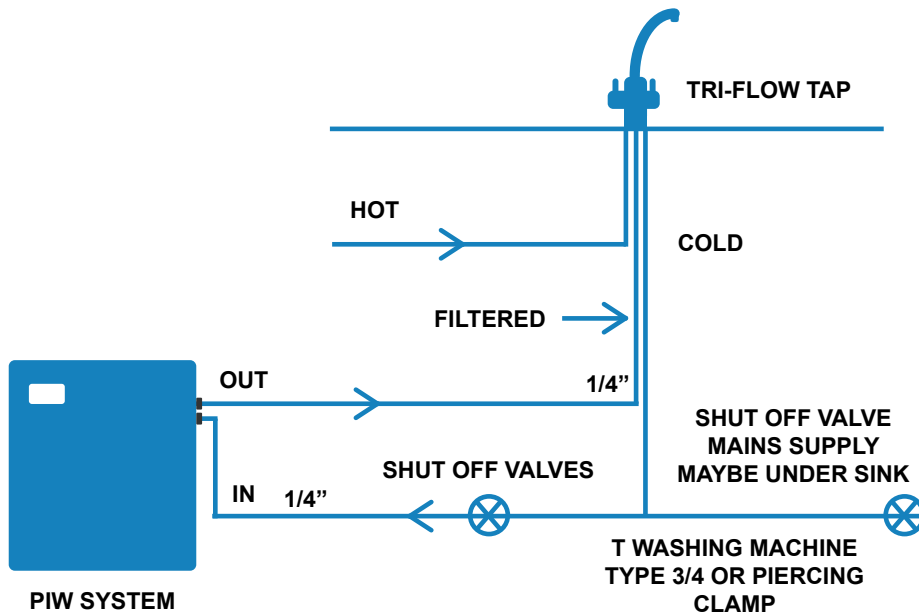
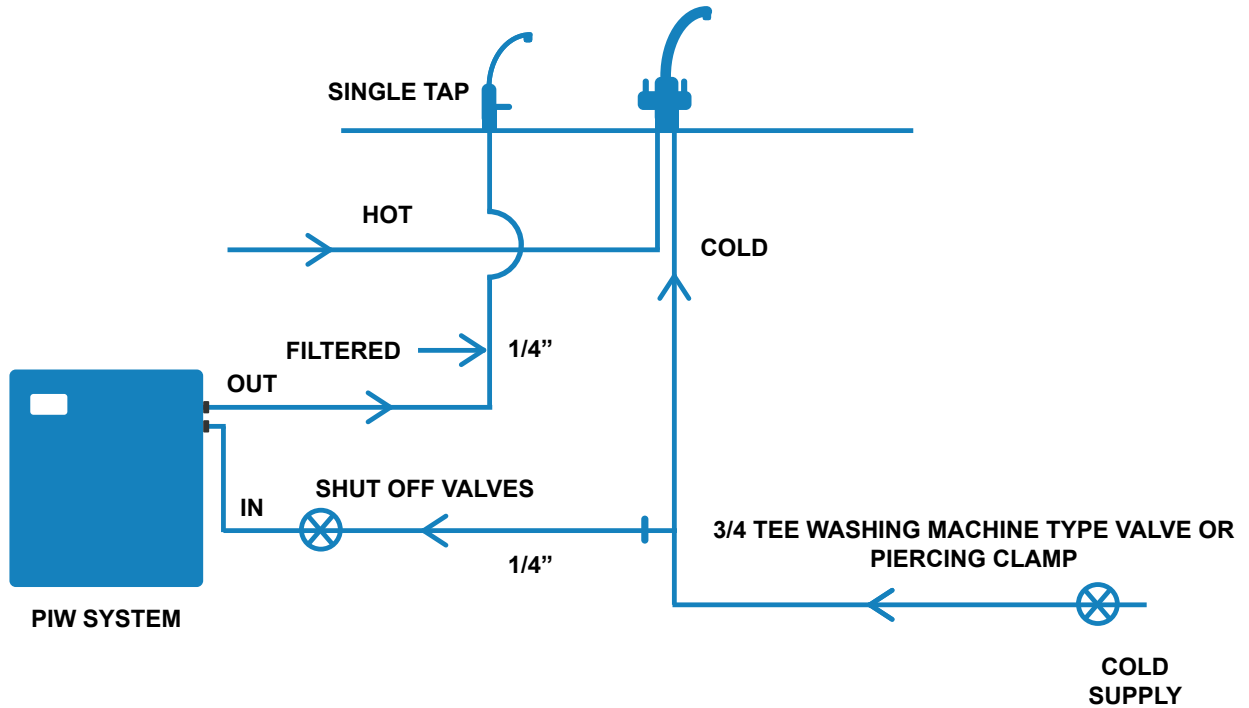
Let the water flow through the system and out of the tap in to your sink for a minimum of 2 minutes.

Enjoy your Pure Ionic Water™!



# INSTALLATION SCHEMATIC

## Undersink Installation:



# DISCLAIMER

---

All information provided to you by us is not and should not be considered as professional repair, maintenance, plumbing or installation advice. Any information or suggestions are provided purely for information purposes only and you should always seek professional clarification and advice. If in doubt, consult a professional plumber.

WET Environmental Ltd is not responsible nor liable for any actions, including but not limited to installation, repairs, plumbing work or other property alterations undertaken by you or performed on your behalf, nor for any omissions by you or omitted on your behalf. Nothing in this paragraph excludes liability for any liability that it would be unlawful for us to exclude.





PURE  
IONIC  
WATER™

The Water of Champions

## CONTACT US

W- [www.pureionicwater.com](http://www.pureionicwater.com)

E- [customer\\_service@pureionicwater.com](mailto:customer_service@pureionicwater.com)