

# WE'RE GOING ON A BUG HUNT!

Head outside to discover a whole new world and see how many you can tick off?



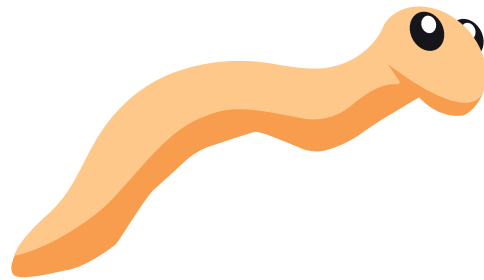
A SLOW  
SNAIL



A BUSY  
BEE



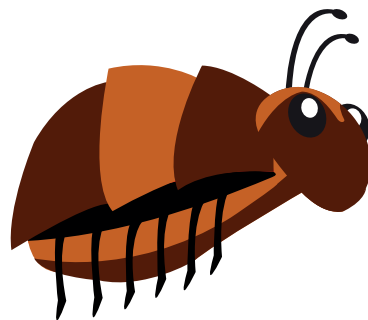
AN ACTIVE  
ANT



A WIGGLY  
WORM



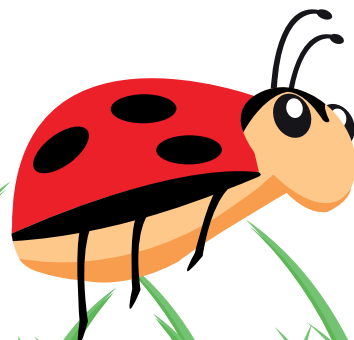
A BEAUTIFUL  
BUTTERFLY



A WICKED  
WOODLOUSE



A BIG  
BEETLE



A LOVELY  
LADYBIRD