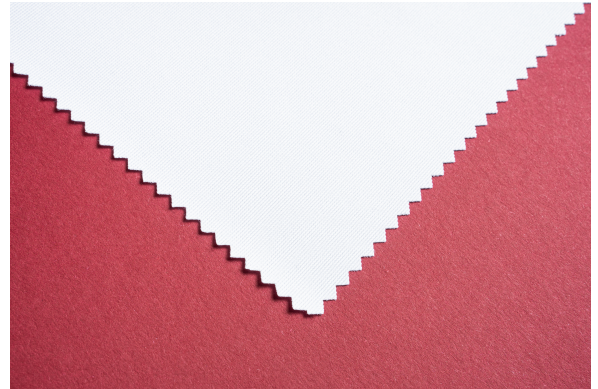


Textile Stretch 1100 - 270

2 bar warp-knitted textile made of 87% polyester and 13% spandex with exceptional elasticity feature. It is also very white, soft and wrinkle-free material offering brilliancy of colors can be achieved.

- End-use:** Furniture coverings, complex and asymmetrical structures, specialty draped decorations.
- Furnish:** 2 bar warp-knitted textile of 87% polyester and 13% spandex.
- Finish:** Matt.
- Ink compatibility:** DyeSub Direct, DyeSub Transfer.



Technical Target Values

Property	Units	Values	Test method
Coating method	N/A	Dip	N/A
Grammage	g/m ²	270	ISO 3801
Yarn dtex	dtex	165x77	ISO 2060
Shielding rate	%	64	ISO 5/2
Elasticity: warp / weft	%	50 / 20	ISO 13934-1
Shrinkage	%, 210°C, 30s	<=2	ISO 3759
Cutting method	N/A	Hot	N/A

Certifications

OEKO-TEX STANDARD 100. DIN 4102-1-B1.

Ink compatibility

Printing side	Compatible inks
Outside	Not printable.
Inside	DyeSub Direct, DyeSub Transfer.

Available sizes

Roll widths (mm)	Roll length (m)	Core (in)
Up to 3200	100	3"

Pallet packaging information

Packaging type	Roll length (m)	Number of rolls per pallet
Box	100	16
Pyramid	N/A	N/A
TIDY	100	16

Finishing and handling information

Textile Stretch 1100 - 270 is highly elastic textile. Therefore, good control of tension system is essential to achieved good printing results.

We recommend hot cutting only. The fabric may come with some odors and smoke when being cut. When sewing the Textile Stretch 1100 - 270, it's advisable to use polyester thread with a weight of 75-90 to have good combination of longevity and elasticity of the final product. The thicker thread might create bulky seams or visible stitching lines.

In general, washing the textile before application isn't necessary. However, if the textile becomes contaminated over time, it can be washed using the delicate cycle of a washing machine without any detergent. Ironing with low temperature.

Tips & Tricks

Textile Stretch 1100 - 270 is highly stretchable textile. Therefore, tension settings of the feed rollers and take-up rollers must be set accordingly. Please refer your printer manufacturer for guidelines.

It is essential to keep an eye when printing on stretchy textiles. The degree of stretchability of textile might change during the length of the roll. Therefore, it is recommended to not leave the printing unattended and adjust the tension system settings if necessary.

General storage information

Storage of the media is recommended in original packaging. In cool (10°C–25°C) and dry environment (30%–60% of relative humidity). Avoid storing media in areas that are subject to extreme temperature fluctuations, such as near windows or doors. High humidity (more than 60% of relative humidity) can cause the media to absorb moisture, which can affect its print quality.

If you plan to not print on the media for an extended period of time, it is always recommended to unload it from the printer. Storing unused media in the printer can cause it to absorb moisture, which can affect its print quality. By unloading the media and storing it in a proper environment, you can help to ensure that it maintains its quality and is ready for use when needed.

Important! Un-tubbed textile media must be kept in original "TIDY"/pyramid packaging or on flat and even surface to avoid media rolls from bending and forming wrinkles.

Printing information

It is important to maintain appropriate temperatures and humidity levels in your printing environment to ensure optimal print quality. Temperature range of 18–24°C and a humidity range of 40–60% are considered ideal for large format printing. Temperature range of 15–30°C and a humidity range of 30–70% are considered critical and may possibly impact the printing quality.

Always use the right settings for the media. The best printing results are achieved when a special profile is created for the specific media being used. If you require assistance or have any questions, please do not hesitate to contact us.

Verify that the media is compatible with the printer and ink type intended to be used. Select the appropriate media profile. Using the correct media profile is essential for achieving optimal print quality. Please contact GM Media representative to help you out if needed.

General handling information

Unpacking

Carefully remove the media from its original packaging, taking care not to damage the edges or corners. Hold the media by the edges or wear gloves to prevent skin oils from transferring to the surface.

Inspection

Inspect the media for any signs of damage or defects. This includes checking the edges, corners, and surface of the media for any cracks, tears, or scratches. If any damage or defects are found, do not load the media into the printer. Instead, set it aside and notify the appropriate personnel.

Transporting/carrying

When transporting the media to the printer, handle it with care to prevent any damage or deformations. This includes avoiding dropping or bumping the media against any surfaces.

Hold the media by the edges or corners to prevent any smudging or scratching of the surface.

If the media is too large to be carried by hand, use a trolley or other appropriate equipment to transport it safely. Keep the media in a protective sleeve or packaging during transportation to prevent any dust or dirt from settling on the surface.