

Classic Ready Room



5 Year
Limited
Warranty

CLINTON
Ready Room™

an all-inclusive Clinton exclusive

Set up an exam room quickly, easily and affordably with Clinton's Classic Ready Room. This package deal features our best casework, classic wood treatment table and the latest in accessories to make any exam room ready—all at one-stop-shop convenience and a package price.

(no model substitutions, your choice of Clinton Fashion Finishes, countertop colors and upholstery colors)

MODEL 1013-27-RR

PACKAGE INCLUDES:

- 1013-27 with Adjustable Backrest and Paper Dispenser in your choice upholstery colors
- 8348 Wall Cabinets in your choice of Fashion Finishes
- 8648-022 Base Cabinets in your choice of Fashion Finishes with stainless steel sink and chrome faucet set included (choose right or left location or no sink. If no location is selected, sink will be placed as shown.)
- 48P Postform Top in your choice of color
- 9810 Large, Tec-Cart, Mobile Work Station with Drawer
- GS-3020 Double, Stainless Steel,* Glove Box Holder
- C-40B Premium, Padded, Side Chair in your choice of upholstery colors


* Not MRI Compatible

1013-27 Classic Series Treatment Table with Drawers

- Features hardwood legs, laminate shelf, two easy clean, plastic drawers and adjustable backrest
- Scratch resistant topcoat finish
- Fast and easy assembly
- Seamless rounded corner top
- 2" firm foam padding (5 cm)
- Heavyweight, knit-backed upholstery
- 400 lbs. load capacity under normal use (181.43 kg)



Prop 65 Warning

 **WARNING:** This product can expose you to chemicals, including chromium, which is known to the State of California to cause cancer or reproductive toxicity. For more information go to www.P65Warnings.ca.gov.

1

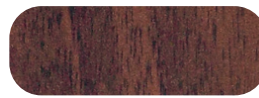
1013-27 SPECIFICATIONS

72" L x 27" W x 31" H

Finishes



Natural



Dark Cherry

Upholstery Colors



Slate Blue



Wedgewood



Royal Blue



Desert Tan



Burgundy



Country Mist



Warm Gray



Gunmetal



Black

8348 Wall Cabinet

- Wall cabinet with 3 doors and 1 adjustable shelf
- Durable, easy-clean, thermofoil surfaces
- No front facing seams
- Unit is pre-assembled to save installation time
- Cabinet easily mounts with hook and rail mounting system
- Fully adjustable, concealed, soft-close hinges
- Smart looking, easy-clean, satin chrome pulls
- Choose from 5 contemporary finishes

fashionfinish
CASEWORK BY CLINTON



8648-022 Base Cabinet

- Base cabinet with 3 doors, 2 drawers and 2 adjustable shelves
- Stainless steel sink and chrome faucet set (position left or right)
- Easy-clean, thermofoil surfaces
- No front facing seams
- Units are pre-assembled to save installation time
- Fully adjustable, soft-close hinges
- Smooth glide, drawers with one-piece metal sides hold up to 75 lbs.
- Smart looking, easy-clean, satin chrome pulls
- Choose from 5 contemporary finishes



8348 SPECIFICATIONS

48" W x 12" D x 24" H

8648 SPECIFICATIONS

48" W x 18" D x 35" H

Prop 65 Warning

! **WARNING:** This product can expose you to chemicals, including chromium, which is known to the State of California to cause cancer or reproductive toxicity. For more information go to www.P65Warnings.ca.gov.

1

Finishes



Chestnut Hill



Twilight



Arctic White



Metropolis Gray

48P Postform laminate countertop

Postform laminate countertops offer a distinctive one-piece countertop that eliminates the seam between countertop surface, backsplash and front edge.

A stainless steel sink and chrome, wing lever faucet is standard with all postform countertops. The faucet is 14.5" high with a 3" radius.

Sink may be positioned on the left or right, or center on a 72" cabinet. Please specify when ordering base cabinet and top.

Model includes sink and faucet. All models with postform countertops without sinks are special order.



SPECIFICATIONS

48P—48"L x 19"D X .75"H

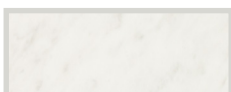
Backsplash —3"

Prop 65 Warning

! **WARNING:** This product can expose you to chemicals, including chromium, which is known to the State of California to cause cancer or reproductive toxicity. For more information go to www.P65Warnings.ca.gov.

1

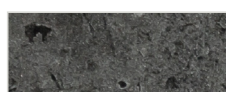
Postform Colors



White Carrera



Meteorite



Black Alicante

9810 Large, Tec-Cart™ Mobile Work Station with Drawer

- Smooth rolling, premium, 3" locking casters
- Vacuum-formed, gray, textured, ABS plastic, work surface rimmed on all sides
- 5-leg, 24" cast aluminum base with bumper guards
- Easy-clean surfaces
- Pneumatic height adjustment for sitting or standing
- Gray laminate cabinet
- Easy-clean, all plastic drawer with gray laminate front and wire pull
- Drawer 14.75" L x 10.5" W x 3" D (37 cm L x 27 cm W x 8 cm D)

(Laptop computer not included)



Prop 65 Warning

SPECIFICATIONS

| | |
|--------------|-----------------|
| Top | 26" W x 20.5" D |
| Height Range | 28.5" — 39" |

WARNING: This product can expose you to chemicals, including chromium, which is known to the State of California to cause cancer or reproductive toxicity. For more information go to www.P65Warnings.ca.gov.

1

GS-3020 Double, Stainless Steel,* Glove Box Holder

- Stainless steel construction
- Open design allows for easy glove identification
- All units mount horizontal or vertical
- Mounting hardware included
- Universal size fits most glove boxes

*Clinton stainless steel items are not M.R.I. compatible.



Shown in the horizontal position

Prop 65 Warning

SPECIFICATIONS/Horizontal

| |
|---------------------------|
| 10.5" L x 3.75" D x 10" H |
|---------------------------|

WARNING: This product can expose you to chemicals, including chromium, which is known to the State of California to cause cancer or reproductive toxicity. For more information go to www.P65Warnings.ca.gov.

1

C-40B Premium, Padded, Black Frame Side Chair Without Arms

- Black powder coated frame finish
- Heavy duty 1-1/2" diameter legs
- Solid plywood seat and back
- Wall saver guard
- 2" thick, firm foam padded seat and back
- Contoured seat and back
- Adjustable leg levers
- Premium, knit-backed upholstery
- 300 lbs. load capacity under normal use

SPECIFICATIONS

| | |
|-------------|---------------|
| Seat | 18" W x 18" D |
| Seat Height | 18" |



Prop 65 Warning

WARNING: This product can expose you to chemicals including 1, 3-Butadiene which is known to the State of California to cause cancer and reproductive harm. For more information go to: www.P65Warning.ca.gov.

7

Upholstery Colors



Slate Blue

Wedgewood

Royal Blue

Desert Tan

Burgundy

Country Mist

Warm Gray

Gunmetal

Black