

BURATO

Size guide: discover your size

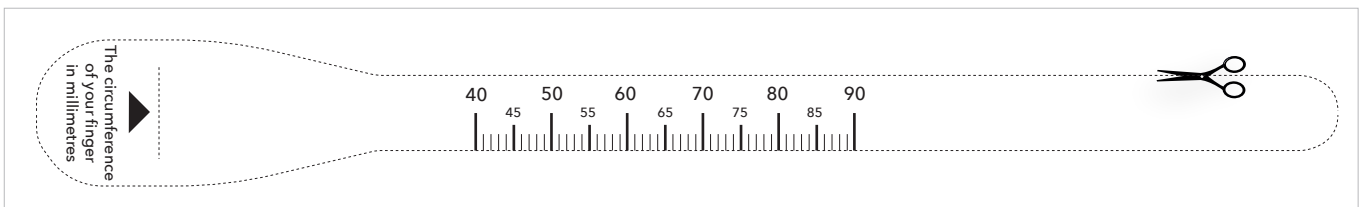
Print this page

- 1 Print this page on A4 paper at 100% scale.
"Fit to page" should not be checked.
- 2 To validate the page has been printed correctly, place a credit card in the black box. It should fit perfectly.

Place your credit card here.
It should fit perfectly.

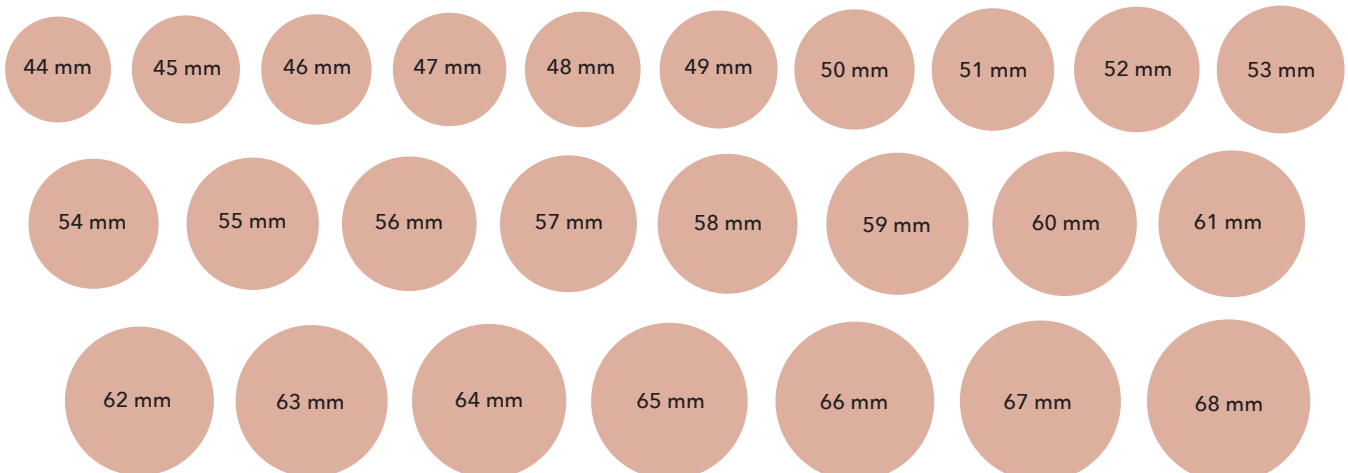
Find your circumference

- 1 Cut out the sizer below, adding a slit where indicated by the arrow.
- 2 Wrap the sizer around your finger, placing the thinner end into the slit.
- 3 To achieve an accurate result, the paper should feel snug around your finger, but comfortable enough to fit over your knuckle. The correct ring size is determined on the basis of a tight fit, but the ring will not be so tight.
- 4 The point indicated by the arrow will correspond to the circumference in millimetres of the finger.



Measure a ring that fits perfectly

Use a ring that fits perfectly. Place it on the circles below until you find one where the inside of the ring lines up with the outside of the circle. If you're in between two sizes, opt for the larger of the two.



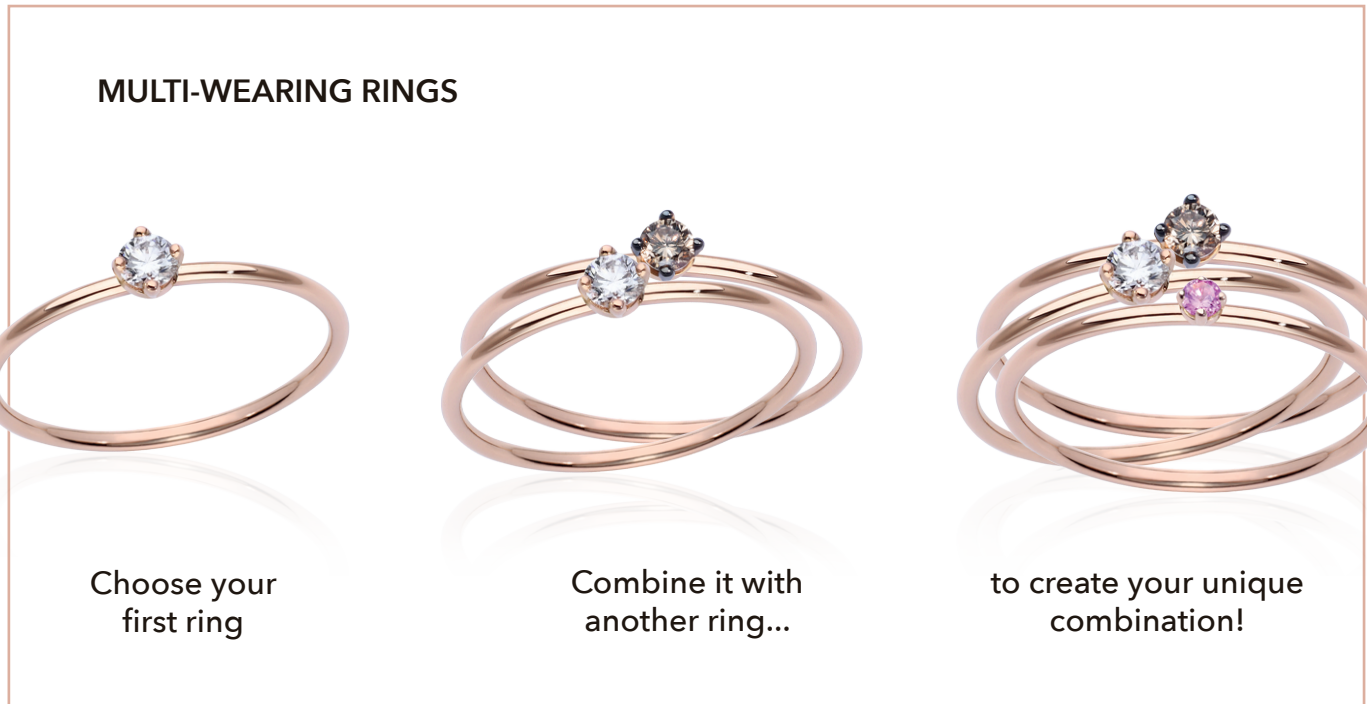
BURATO

International size guide: conversion table

INTERNATIONAL MEASURE	INTERNAL CIRCUMFERENCE (MM)	INTERNAL DIAMETER (MM)
44	44 mm	14,00 mm
45	45 mm	14,30 mm
46	46 mm	14,65 mm
47	47 mm	14,97 mm
48	48 mm	15,29 mm
49	49 mm	15,61 mm
50	50 mm	15,92 mm
51	51 mm	16,24 mm
52	52 mm	16,56 mm
53	53 mm	16,88 mm
54	54 mm	17,20 mm
55	55 mm	17,52 mm
56	56 mm	17,83 mm
57	57 mm	18,15 mm
58	58 mm	18,47 mm
59	59 mm	18,79 mm
60	60 mm	19,11 mm
61	61 mm	19,40 mm
62	62 mm	19,70 mm
63	63 mm	20,10 mm
64	64 mm	20,40 mm
65	65 mm	20,70 mm
66	66 mm	21,00 mm
67	67 mm	21,30 mm
68	68 mm	21,60 mm

BURATO

Size guide: multi-wearing and chain rings



Multi-wearing rings: how to choose your size

When buying several rings to wear on one finger, it is suggested to opt for a size larger than your usual size.

Chain-style rings

When placing chain rings (for example Arch model - BN972), the best way is to gently push the ring along the finger, taking care that it does not twist around to avoid reducing the diameter of the ring.

Considering the specific wearability of this type of ring, if you are choosing between two sizes, we recommend choosing the higher size.

Some suggestions...

Even though our fit recommendations come from experience, they should only be used as a starting point and the below factors should be considered in each specific case:

- your specific finger shape;
- your lifestyle habits;
- the possible changes in size that naturally occur during the day or with changing weather conditions.

Do not forget that our hands are not perfectly identical, and that a ring that is usually worn on a finger of the left hand may not fit on the same finger of the right hand.

Always make sure that the chosen size fits smoothly over the entire length of the finger.