



## ALEX

## AXEL

- Speech recognition with artificial intelligence (AI) voice responses
- Scenario-driven, instructor-controlled
- Model-driven physiology with pharmaceutical treatment simulations\*
- Virtual AED/Pacing and 12 lead ECG\*
- Digital patient and TeamSpace\*
- 5-year warranty\*

\*Based on service level.

- Scenario-driven, instructor-controlled
- Facilitate patient learner communication via internal microphone and speakers in real-time
- Model-driven physiology with pharmaceutical treatment simulations
- Virtual AED/Pacing and 12 lead ECG
- 5-year warranty

Both ALEX and AXEL are available in light and medium skin tones.



BOTH are ideal untethered/stand-alone simulators to **train nurses, medical students and patient care personnel** anywhere (no control center required) to:

- Build critical thinking, decision-making & priority-setting skills
- Perform patient physical assessment
- Evaluate vitals and waveforms with simulated patient monitor
- Create automated performance assessment of learning objectives
- Maintain treatment plan with customizable labs and medical orders
- Practice procedures such as I.V. administration, catheterization and airway management
- Assess advanced life support performance with CPR Metrics
- Live stream and/or record patient perspective during simulated events

*Nasco*  
HEALTHCARE

**AHS** AMERICAN  
HOSPITAL  
SUPPLY

Distributed by American Hospital Supply  
2219 Main St.  
#464  
Santa Monica, CA 90405  
info@american-hospital-supply.com  
888-621-5011



## ALEX – Responsive speech-enabled

The first Patient Communication Simulator that sees, listens, and responds using artificial intelligence (AI).

# Be READY

## And his twin, AXEL


Patient simulator with manual real-time speech and built-in audio-visual recording capabilities – for affordable, on-the-go simulation.

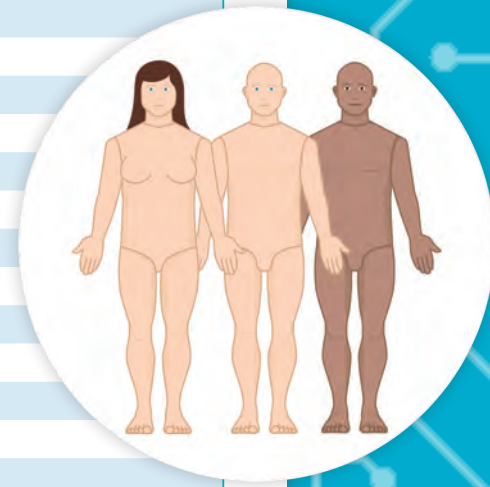
Both ALEX and AXEL are untethered, on-the-go patient simulators – simply unpack, and you're ready to train – anytime, anywhere!\*

\*8 hour battery life and requires Wi-Fi.

*Nasco*  
HEALTHCARE

# ALEX/AXEL Comparison Guide

|  | ALEX LITE                   | ALEX PLUS                     | ALEX PRO         | AXEL   |
|---|-----------------------------|-------------------------------|------------------|--|
| <b>Light Skin Tone</b>  | <b>101-7130</b>             | <b>101-7140</b>               | <b>101-7150</b>  | <b>101-7210</b>  |
| <b>Medium Skin Tone</b>   | <b>101-7130M</b>            | <b>101-7140M</b>              | <b>101-7150M</b> | <b>101-7210M</b>   |
| <b>Adult/Adolescent Full Body Patient Simulator</b>                               | <b>\$</b>                   | <b>\$\$</b>                   | <b>\$\$\$</b>    | <b>\$\$</b>  |
| Speech Recognition (NLP)  | Up to 250 questions per day | Up to 1,000 questions per day | Unlimited        | Manual microphone/speaker allows facilitator and student to speak to each other. |
| Intubation - Oral, Nasal and Digital  | Yes                         | Yes                           | Yes              | Yes  |
| Palpable Pulses - Bilateral   | Yes                         | Yes                           | Yes              | Yes  |
| Carotid   | Yes                         | Yes                           | Yes              | Yes  |
| Brachial  | Yes                         | Yes                           | Yes              | Yes  |
| Radial  | Yes                         | Yes                           | Yes              | Yes  |
| Dorsalis Pedis  | Yes                         | Yes                           | Yes              | Yes  |
| Bilateral Blood Pressure (Manual & 2-step BP) with Smartscope & Smartcuff         | Yes                         | Yes                           | Yes              | Yes  |
| Anterior Heart and Bowel Sounds with Smartscope                                   | Yes                         | Yes                           | Yes              | Yes  |
| Anterior/Posterior Lung Sounds with Smartscope                                    | Yes                         | Yes                           | Yes              | Yes  |
| Spontaneous Breathing - Synchronized with Respiratory Rate                        | Yes                         | Yes                           | Yes              | Yes  |
| BVM Ventilation   | Yes                         | Yes                           | Yes              | Yes  |
| Patient Monitor with Vitals And Waveforms   | Yes                         | Yes                           | Yes              | Yes  |
| HR, RR, ETCO2, SPO2, TEMP, BP, ECG & MAP  | Yes                         | Yes                           | Yes              | Yes  |
| Virtual AED/Pacing & 12 Lead ECG  | Not Available               | Yes                           | Yes              | Yes  |
| CPR with Metrics Charting Depth, Rate & Ventilations                              | LOG                         | LIVE                          | LIVE             | LIVE   |
| Real-Time Remote Simulation Control   | Yes                         | Yes                           | Yes              | Yes  |
| Scenarios Included with Customizable Patients                                     | Yes                         | Yes                           | Yes              | Yes  |
| Measurable Objectives with Automated Assessment                                   | Yes                         | Yes                           | Yes              | Yes  |
| Patient Orders  | Yes                         | Yes                           | Yes              | Yes  |
| Model-Driven Physiology   | Not Available               | Not Available                 | Yes              | Yes  |
| Drug Treatments   | Not Available               | Not Available                 | Yes              | Yes  |
| Built-In Microphone and Speakers  | Yes                         | Yes                           | Yes              | Yes  |
| Events, Objectives & Orders Log Entry Record                                      | Yes                         | Yes                           | Yes              | Yes  |
| Communication Transcription Log Entry Record                                      | Yes                         | Yes                           | Yes              | Not Available  |
| Iris Cam - Live Stream  | Yes                         | Yes                           | Yes              | Yes  |
| Iris Cam - Recording  | Not Available               | 1,000 hours                   | Unlimited        | 1,000 hours  |
| Simulation Log Archive  | 60 days                     | 1 year                        | 5 years          | 1 year   |
| Teamspace   | Not Available               | Not Available                 | Yes              | Not Available  |
| Cloud Connected Control   | Yes                         | Yes                           | Yes              | Yes  |
| Virtual Patient   | Not Available               | Not Available                 | Yes              | Not Available  |
| Warranty  | 1 year                      | 5 years                       | 5 years          | 5 years  |
| IV Arm - Optional   | Optional                    | Optional                      | Optional         | Optional   |
| Female Conversion Kit - Optional  | Optional                    | Optional                      | Optional         | Optional   |



**Weight:** 45 lbs. (20 kg)  
**Height:** 5 ft. 1 in. (1.55 m)  
**Shipping Weight:** 67 lbs. (30 kg)  
**Shipping Dimensions:**  
 41" H x 19.5" W x 15" D

| ACCESSORIES |   |           |   |                |   |
|-------------|---|-----------|---|----------------|---|
| 101-7160    | ALEX/AXEL Female Accessory Kit Light Skin Tone    | 101-8029M | ALEX/AXEL Optional IV Arm Medium Skin Tone - Right  | 101-8030UPPLUS | ALEX Service Upgrade Lite to Plus               |
| 101-7160M   | ALEX/AXEL Female Accessory Kit Medium Skin Tone   | 101-8899  | ALEX Lite to Plus & Plus Service Extension (1 Year) |                | Mandatory 1-time upgrade for Software Service   |
| 101-8029    | ALEX/AXEL Optional IV Arm Light Skin Tone - Right | 101-8999  | ALEX Plus to Pro Service Extension (1 Year)         |                | Extension for Lite customers to upgrade to Plus |