



BZB Industries 1.4 Roof Top Tent User Manual





Contents

Disclaimers.....	1
Installation.....	2
Waterproofing.....	5
Tent Setup.....	6
Tent Pack Up.....	8
Looking after your tent.....	10
Custom mounting options.....	11

Disclaimers

The manufacturer's warranty will be VOID if ANY holes are drilled into the tent.

Installation of the tent requires 2+ people without mechanical assistance

Improper installation of the product can result in damage to the vehicle, product or the occupants.

Installation

These steps are a generic instruction for installing your Roof Top Tent, suiting setups on standard roof racks, flat racks and tray bars. For other custom mounting options, see the custom mounting section on page 11 of this manual.

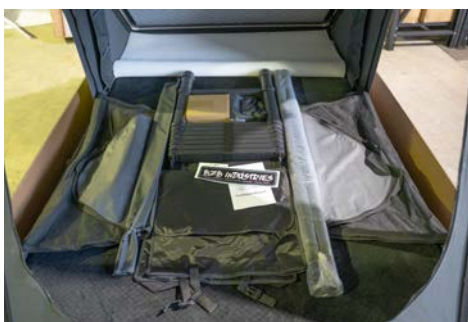


1. Open tent box and remove packaging



2. Open tent by undoing latches and lifting

Note: Throwing the tent awning over the back of the tent can provide better access

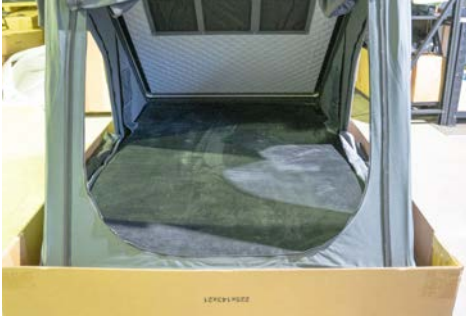


3. Remove the contents inside the tent including mattress



4. Lay down the white moisture mat

Note: Ensure the moisture mat cutout for the 12v panel is in the correct position, the mattress also has this cutout



5. Place the mattress back into the tent

Note: It is easiest to apply waterproofing at this stage. See waterproofing section of this manual



6. Locate the cardboard box with mounting hardware



7. Remove the 8x bolts, sandwich plates and nuts



8. Close and latch the tent

Note: Ensure all the tent canvas is tucked in under the rubber seal when shut



9. Lift the tent onto the car

Note: This is a 2 person lift minimum, also ensure to not scratch or damage the vehicle when lifting tent on top



10. Setup the sandwich plates by placing a bolt in each plate



11. Lift up one corner of the tent, with tent in position



12. Slide in the two sandwich plates with bolts into the channel, centre above crossbar of roof rack



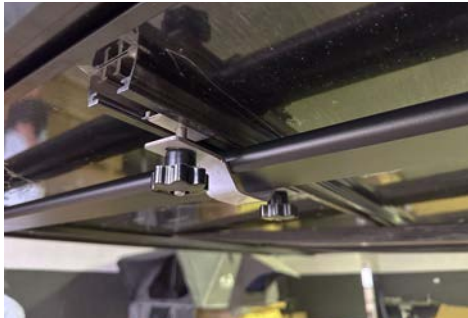
13. Repeat previous steps for each corner



14. Fit remaining 'U' plates and nuts to clamp the tent to the roof rack



15. Adjust the tent to its final position on the roof rack



16. Tighten the nuts evenly with provided spanner

Waterproofing

All of our 1.4 Roof Top Tents are made with high quality, pre-treated canvas that provide excellent waterproofing out of the box.

Extra waterproofing is not needed however can be applied at your own discretion. We recommend Oztrail's 'Aqua Proof' Spray Cans. This can be purchased from BCF, Anaconda etc.



Tent Setup

Follow this tent setup guide the first time you set up your tent, it includes any tips and tricks that we've found on our journeys.



1. Hook the ladder onto the tent at the rear

Note: For utes or tailgate wagons, standing on the tailgate is an easier option



2. Unclip the latches



3. Push the tent up



4. Pull down the bungee cord and hook along bottom track of the tent



5. Grab out the awning poles from the tent

Note: It's quickest to leave these poles loose inside the tent when you pack it up



6. Insert the awning pole into the tent hole

Note: There is a 2nd recessed hole inside the tent frame that this pole has to locate into



7. Hook the other end of the pole into the awning eyelet



8. Repeat the previous steps for the remaining awning poles

Tent Pack Up

Follow this tent pack up guide the first time you pack up your tent, it includes any tips and tricks that we've found on our journeys.



1. Zip up the two side flyscreens

Note: Leave the canvas unzipped. This is not absolutely necessary but allows air to escape as the tent is shutting



2. Roll up the front entrance canvas and flyscreen



3. Remove the awning poles and place inside the tent



4. Pull up the bungee cord to hold the awning canvas to the tent



5. Pull down on the black strap until tent is nearly shut



6. Tuck in all the canvas that is protruding from the sides of the tent

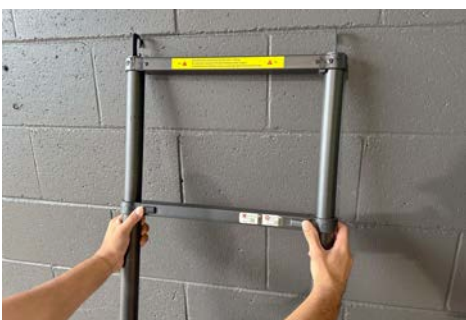


7. Clip the latch hooks onto their mounting point, Once ALL the canvas is tucked under the rubber seal



8. Press upwards on the latches to fully close the tent.

Note: The difficulty of this step depends on what's inside the tent. Blankets, pillows etc



9. Pack down the ladder by pushing in the tabs, start from the top and let gravity pull the ladder closed



Looking after your tent

Looking after your tent properly will ensure it lasts the test of time. There are multiple things you can do to prolong the life of the tent:

Air out the Tent

After a trip, OR after some rain, it's recommended to open the tent up on a nice clear day and air it out. Moisture can build up inside the tents whether it's been wet or not. The cold mildew of a morning and the hot sun in the middle of the day on the tents can cause this.

Ensure the mattress and moisture mat are aired out too. If this step is not done, the tent can seem dry, only to find mould building up on the moisture mat. This is not abnormal as the moisture mat's job is to absorb all the moisture inside of the tent.

Vacuum / Clean out the Tent

Although not necessary, it is a good idea to give the mattress a vacuum as well as the inside of the tent. This is to ensure any sand or dirt does not build up under the moisture mat and cause rust or scratching.

Clean the Tent Shell with Water

It is advised to only clean off the tents with water as different chemicals can affect the paint on the tents, potentially causing discolouration. So a simple hose off or scrub with a sponge if there is caked on mud is all that should be needed. Washing off the tent often will ensure no rust or corrosion can start to form.

This is especially important after driving on the beach.



Custom mounting options

If the universal channel mounting option is not going to suit your setup, or you wish to mount your tent as low as possible, there are ways to custom mount the tent.

Generally, these options will require holes to be drilled into the base of the tent, please note: **DRILLING ANY HOLES IN THE TENT WILL VOID THE MANUFACTURER'S WARRANTY.** With that being said, these custom options are typically the sleekest way to mount the tent.

Tips for custom mounting:

- Remove the universal mounting channel and be sure to plug the holes with the nuts and bolts that came out
- Trim any bolts inside the tent so you don't feel them under the mattress
- Measure multiple times before drilling into the tent base
- Use large mudflap washers inside the tent to spread the clamping force of the bolts / nuts
- The more mounting points the better
- Spread out the mounting points towards the edges as much as possible
- Use Lock Nuts and or loctite
- Ensure whatever you're mounting the tent to is secured to the car extremely well